

Statistical bulletin

Construction output in Great Britain: June 2024, new orders and Construction Output Price Indices, April to June 2024

Short-term measures of output by the construction industry in June 2024, contracts awarded for new construction work in Great Britain, and a summary of the Construction Output Price Indices (OPIs) in the UK for Quarter 2 (Apr to June) 2024.

Contact:
Construction statistics
construction.statistics@ons.gov.
uk
+44 1633 45644

Release date:
15 August 2024

Next release:
11 September 2024

Table of contents

1. [Main points](#)
2. [Construction output in June 2024](#)
3. [New orders in the construction industry in Quarter 2 2024](#)
4. [Construction Output Price Indices in June 2024](#)
5. [Data on construction in Great Britain](#)
6. [Glossary](#)
7. [Data sources and quality](#)
8. [Related links](#)
9. [Cite this statistical bulletin](#)

1 . Main points

- Construction output is estimated to have fallen by 0.1% in Quarter 2 (Apr to June) 2024, compared with Quarter 1 (Jan to Mar) 2024; this came solely from a decrease in new work (0.5% fall), as repair and maintenance grew by 0.4%.
- Monthly construction output is estimated to have grown by 0.5% in June 2024; this came from rises in both new work (0.9%), and repair and maintenance (0.1%).
- At the sector level, seven out of the nine sectors grew in June 2024, with the main contributors to the monthly increase from non-housing repair and maintenance, and private commercial new work, which grew by 3.2% and 2.1%, respectively.
- Total construction new orders grew by 16.5% (£1,771 million) in Quarter 2 2024, compared with Quarter 1 2024; this quarterly increase mainly came from private commercial new work, and infrastructure new work, which grew by 15.1% (£503 million) and 23.4% (£389 million), respectively.
- The annual rate of construction output price growth was 1.9% in the 12 months to June 2024.

2 . Construction output in June 2024

Monthly construction output is estimated to have grown by 0.5% in volume terms in June 2024. This follows growth of 1.7% (revised from 1.9%) in monthly construction output in May 2024. Monthly construction output for April was revised up by 0.1%, to negative 1.0%.

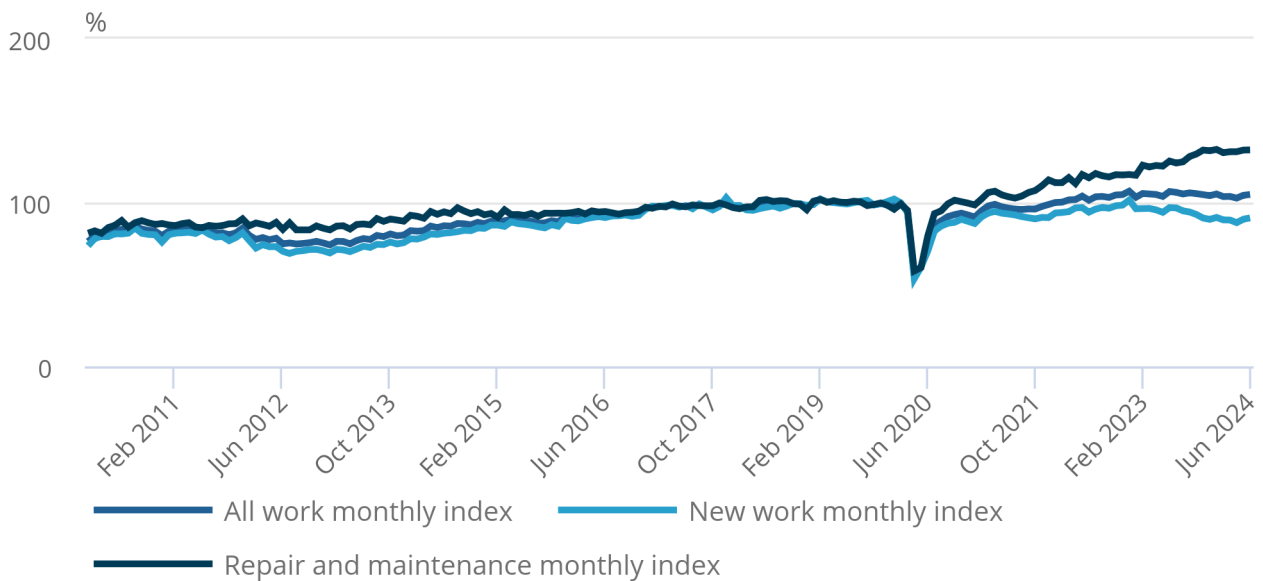
There were mixed effects from rain delaying work, but also warmer weather leading to an increase in output in some areas in June, according to anecdotal evidence from our [Monthly Business Survey for Construction and Allied Trades \(MBS\)](#). The Met Office confirmed in their [Monthly climate summary \(PDF, 4.6MB\)](#) that there were scattered showers throughout June; some areas of the country reached high temperatures, but mainly June was cooler than May on average. Additional comments from the MBS referenced an effect from customers holding off on spending during the general election period.

Figure 1: The monthly all work construction output index increased on the month in June 2024, from rises in new work (0.9%), and repair and maintenance (0.1%)

Monthly all work index, chained volume measure, seasonally adjusted, Great Britain, January 2010 to June 2024

Figure 1: The monthly all work construction output index increased on the month in June 2024, from rises in new work (0.9%), and repair and maintenance (0.1%)

Monthly all work index, chained volume measure, seasonally adjusted, Great Britain, January 2010 to June 2024



Source: Construction Output and Employment data from the Office for National Statistics

Detailed growth rates

Table 1: Construction output main figures, June 2024, Great Britain
Seasonally adjusted, chained volume measure, £ million and percentage change

Type of work	Value £ million	Most recent month on the previous month	Most recent month on year	Most recent three- months on three- months	Most recent three- months on year
Total all work	15,463	0.5	-1.7	-0.1	-1.0
Total all new work	8,725	0.9	-6.6	-0.5	-6.4
Total repair and maintenance	6,738	0.1	5.5	0.4	6.8
New housing					
Public	423	-2.1	-7.6	-8.2	-6.8
Private	2,787	0.1	-8.3	-0.8	-8.4
Other new work					
Infrastructure	2,224	0.2	-12.2	-0.6	-10.5
Public	835	3.5	-2.2	2.5	-3.1
Private industrial	539	1.5	-3.2	0.3	-7.2
Private commercial	1,916	2.1	1.0	0.3	1.1
Repair and maintenance					
Public housing	648	1.5	2.6	-0.7	2.1
Private housing	2,607	-4.1	3.0	-2.6	6.8
Non-housing	3,483	3.2	8.0	3.0	7.7

Source: Construction Output and Employment data from the Office for National Statistics

Quarter-on-quarter construction output growth in Quarter 2 2024

Construction output fell by 0.1% (£68 million) in Quarter 2 2024. The quarterly fall came solely from a decrease in new work (0.5% fall), as repair and maintenance increased by 0.4%.

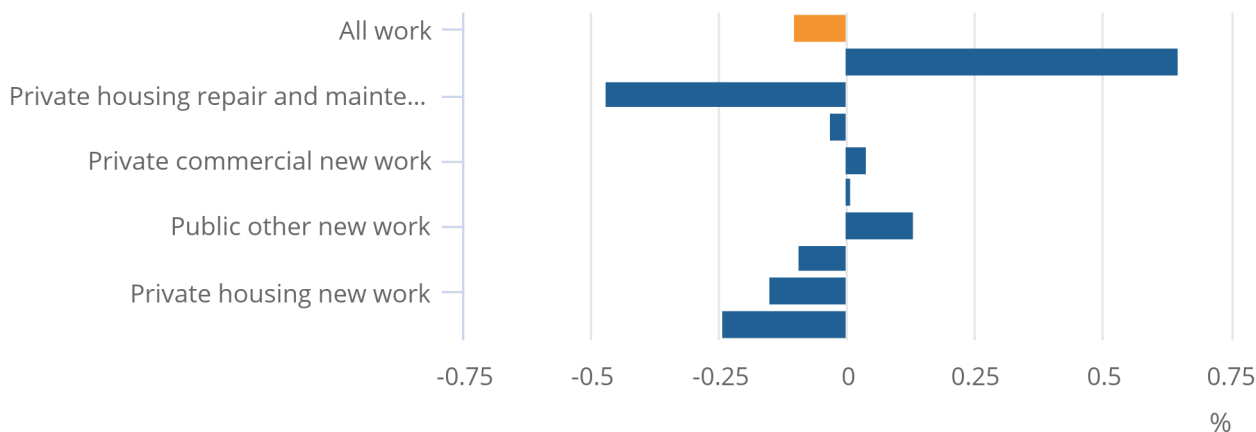
The fall in Quarter 2 2024 came solely from a 1.0% decrease in April 2024. Anecdotal evidence suggested heavy rainfall and strong winds affected output in April.

Figure 2: All work fell in April to June 2024 (0.1%), mainly from private housing repair and maintenance

Contributions to quarterly growth (Quarter 2 (Apr to June) 2024 compared with Quarter 1 (Jan to Mar) 2024) chained volume measure, seasonally adjusted, Great Britain, percentage points

Figure 2: All work fell in April to June 2024 (0.1%), mainly from private housing repair and maintenance

Contributions to quarterly growth (Quarter 2 (Apr to June) 2024 compared with Quarter 1 (Jan to Mar) 2024) chained volume measure, seasonally adjusted, Great Britain, percentage points



Source: Construction Output and Employment data from the Office for National Statistics

Notes:

1. Sector estimates may not sum because of rounding.

Of the nine sectors, five fell in Quarter 2 2024, with the largest contributors being private housing repair and maintenance, and public new housing. These sectors fell by 2.6% (£216 million) and 8.2% (£112 million), respectively.

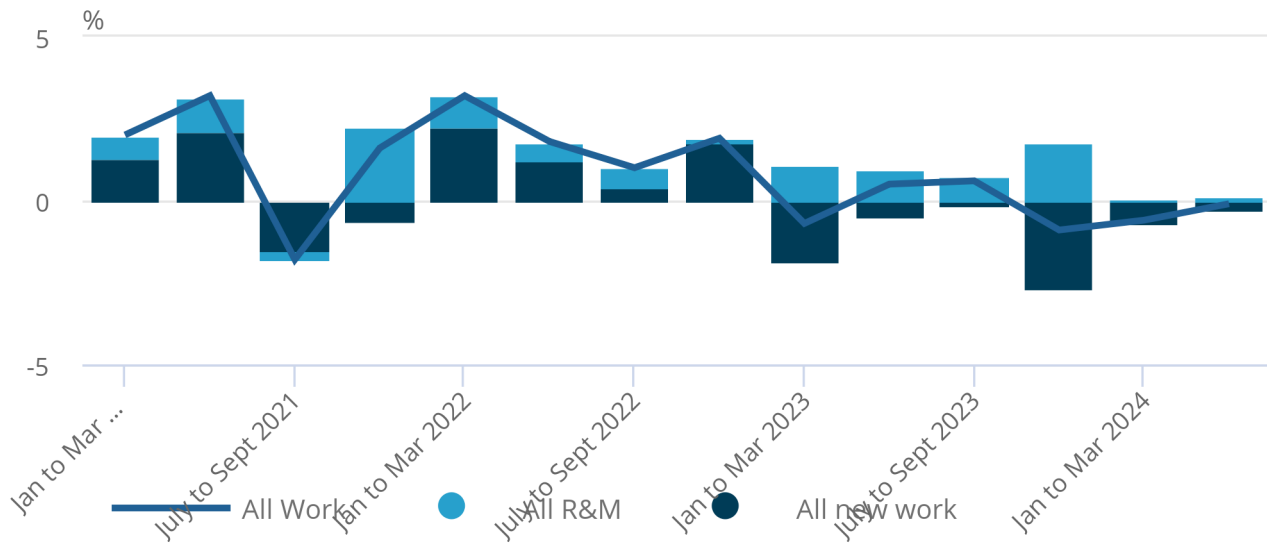
The largest positive contributor was non-housing repair and maintenance, which grew by 3.0% (£300 million).

Figure 3: The quarterly series saw three periods of consecutive decreases, with contributions from new work, and repair and maintenance

Quarter-on-quarter contributions to all work growth, chained volume measure, seasonally adjusted, Great Britain, Quarter 1 (Jan to Mar) 2021 to Quarter 2 (Apr to June) 2024

Figure 3: The quarterly series saw three periods of consecutive decreases, with contributions from new work, and repair and maintenance

Quarter-on-quarter contributions to all work growth, chained volume measure, seasonally adjusted, Great Britain, Quarter 1 (Jan to Mar) 2021 to Quarter 2 (Apr to June) 2024



Source: Construction Output and Employment data from the Office for National Statistics

Month-on-month construction output growth in June 2024

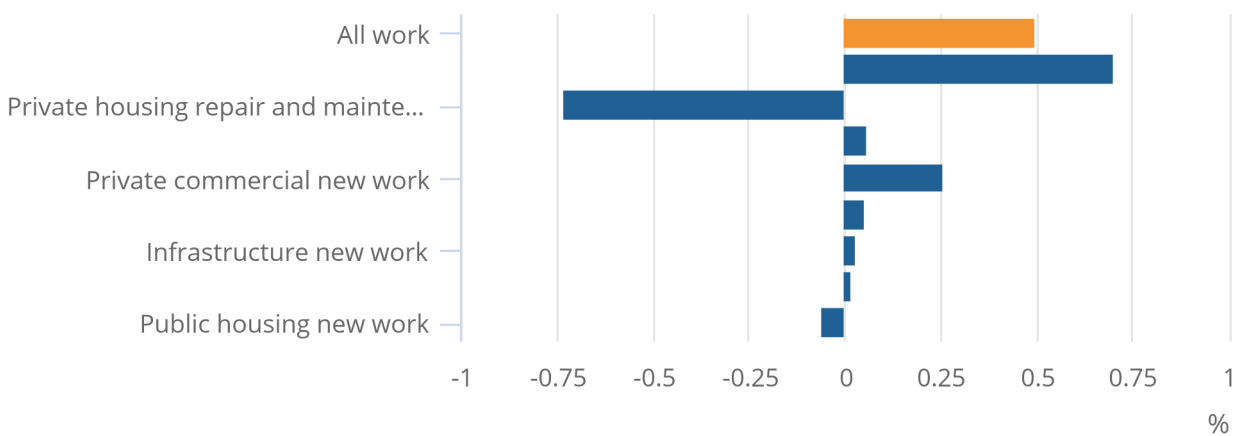
The 0.5% growth in construction output in June 2024 represents an increase of £79 million, compared with May 2024. Seven out of the nine sectors saw growth on the month. The volume in June 2024 was £15,463 million.

Figure 4: All work saw a rise on the month in June 2024 (0.5%), with seven out of the nine sectors showing increases

Contributions to monthly growth (June 2024 compared with May 2024), chained volume measure, seasonally adjusted, Great Britain, percentage points

Figure 4: All work saw a rise on the month in June 2024 (0.5%), with seven out of the nine sectors showing increases

Contributions to monthly growth (June 2024 compared with May 2024), chained volume measure, seasonally adjusted, Great Britain, percentage points



Source: Construction Output and Employment data from the Office for National Statistics

Notes:

1. Sector estimates may not sum because of rounding.

Non-housing repair and maintenance, and private commercial new work were the largest positive contributors to the monthly increase in June 2024. They increased by 3.2% (£107 million) and 2.1% (£40 million), respectively.

3 . New orders in the construction industry in Quarter 2 2024

In Quarter 2 (Apr to June) 2024, total construction new orders grew by 16.5% (£1,771 million), compared with Quarter 1 (Jan to Mar) 2024. This follows an increase of 17.7% in Quarter 1 2024, compared with Quarter 4 (Oct to Dec) 2023. Quarter 2 2024 had the highest level of total construction new orders (£12,514 million) since Quarter 4 2022 (£13,032 million). More information can be found in our [New orders in the construction industry dataset](#).

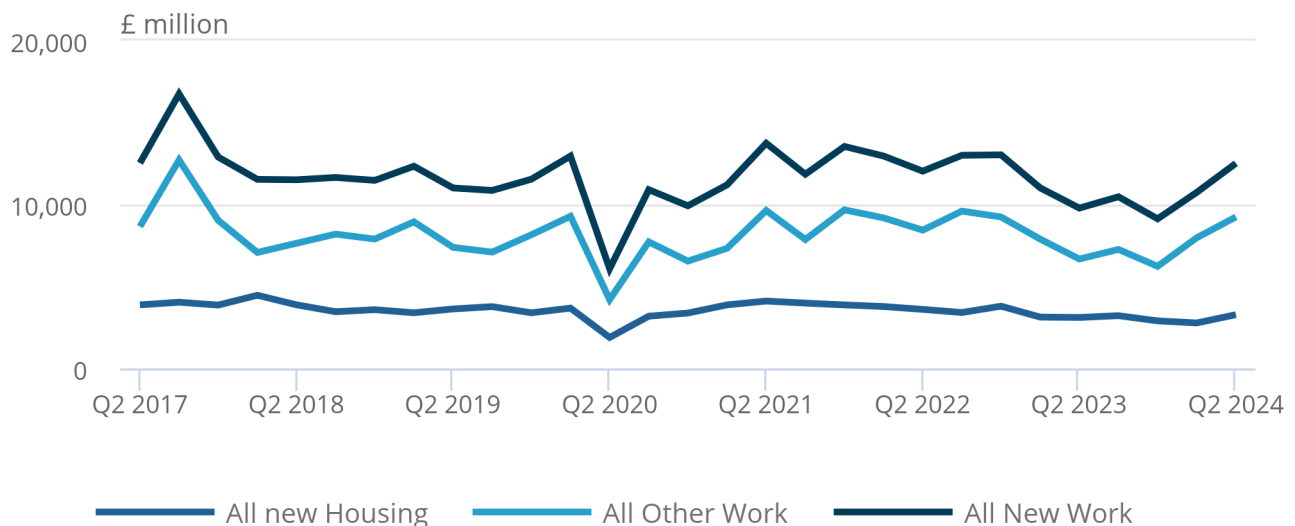
Other new work (non-housing) new orders was the largest contributor to the increase in Quarter 2 2024, growing by 15.9% (£1,269 million). This mainly came from private commercial new orders, which grew by 15.1% (£503 million) and was affected by rises in offices, garages and shops. The other main contributor to the growth in other new work was infrastructure new orders, which increased by 23.4% (£389 million).

Figure 5: Total new orders increased (16.5%) in April to June 2024, compared with January to March 2024

Components of work, new orders, constant prices, seasonally adjusted, Quarter 2 (Apr to June) 2017 to Quarter 2 2024, Great Britain

Figure 5: Total new orders increased (16.5%) in April to June 2024, compared with January to March 2024

Components of work, new orders, constant prices, seasonally adjusted, Quarter 2 (Apr to June) 2017 to Quarter 2 2024, Great Britain



Source: Construction new orders data from the Office for National Statistics, and Barbour ABI

Table 2: Construction new orders main figures, Quarter 2 (Apr to June) 2024
Seasonally adjusted volume, £ million and percentage change, Great Britain

Type of work	Value (£m)	Most recent quarter on previous quarter	Most recent quarter on a year earlier	Most recent year on year
All new work	12,514	16.5	28.0	-8.5
All new housing	3,275	18.2	5.4	-9.5
Public	434	94.2	13.9	7.2
Private	2,841	11.5	4.2	-11.6
All other work	9,240	15.9	38.5	-8.1
Infrastructure	2,045	23.4	50.0	-15.2
Public	1,938	6.9	73.8	7.8
Private industrial	1,435	21.3	16.2	-24.9
Private commercial	3,822	15.1	29.1	-2.9

Source: Construction output and employment data from the Office for National Statistics, and Barbour ABI

4 . Construction Output Price Indices in June 2024

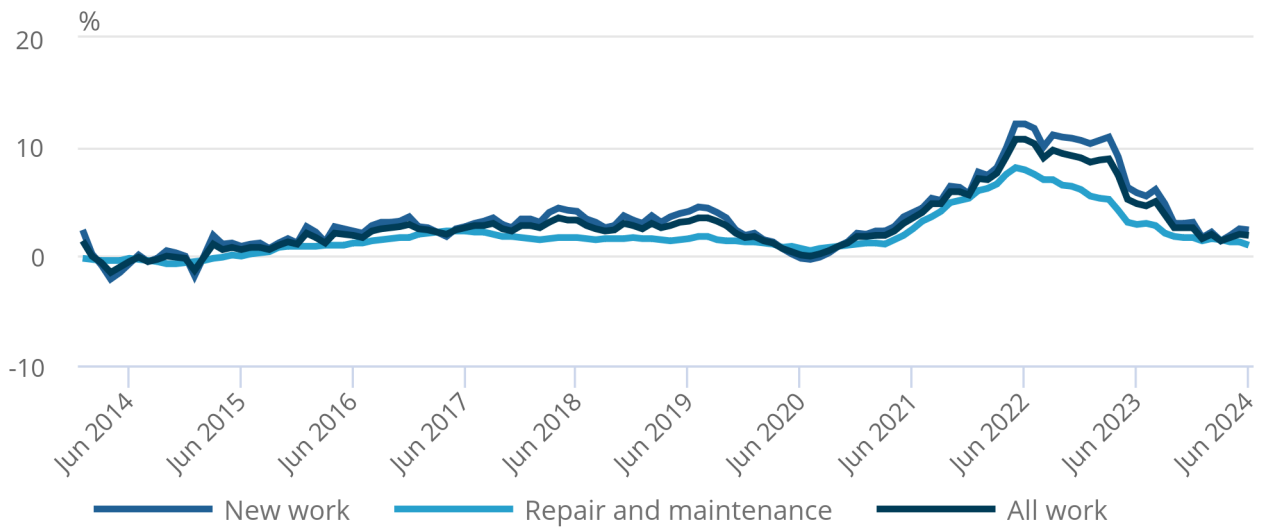
Prices in the construction industry increased to 1.9% in the 12-month period to June 2024, as estimated from our [Construction Output Price Indices dataset](#).

Figure 6: Annual construction output price growth slowed in June 2024 (1.9%)

Annual rate of construction output price growth, percentage change, January 2014 to June 2024

Figure 6: Annual construction output price growth slowed in June 2024 (1.9%)

Annual rate of construction output price growth, percentage change, January 2014 to June 2024



Source: Construction output price indices data from the Office for National Statistics

5 . Data on construction in Great Britain

[Output in the construction industry](#)

Dataset | Released 15 August 2024

Monthly construction output for Great Britain at current price and chained volume measures, seasonally adjusted by public and private sector. Quality measures, including response rates.

[Output in the construction industry: subnational and subsector](#)

Dataset | Released 15 August 2024

Quarterly non-seasonally adjusted type of work and regional data at current prices, Great Britain.

[Construction output price indices](#)

Dataset | Released 15 August 2024

A summary of the Construction Output Price Indices (OPIs) from January 2014 to June 2024, UK.

[New orders in the construction industry](#)

Dataset | Released 15 August 2024

Quarterly new orders at current price and chained volume measures, seasonally adjusted by public and private sector. Quarterly non-seasonally adjusted type of work and regional data.

[Construction statistics annual tables](#)

Dataset | Released 28 November 2023

The construction industry in Great Britain, including value of output and type of work, new orders by sector, number of firms and total employment.

[Output in the Construction Industry – Customise my data](#)

Dataset | Released 15 August 2024

Customise My Data (CMD) is our new way of providing filterable, explorable data suitable to individual user needs.

6 . Glossary

Construction output estimates

Construction output estimates are monthly estimates of the amount of output chargeable to customers for building and civil engineering work done in the relevant period, excluding Value Added Tax (VAT) and payments to subcontractors.

Seasonally adjusted estimates

Seasonally adjusted estimates are derived by estimating and removing calendar effects (for example, leap years such as 2020) and seasonal effects (for example, decreased activity at Christmas because of site shutdowns) from the non-seasonally adjusted estimates.

Value estimates

The value estimates reflect the total value of work that businesses have completed over a reference month.

Volume estimates

The volume estimates are calculated by taking the value estimates and adjusting to remove the impact of price changes.

7 . Data sources and quality

Quality and methodology

More quality and methodology information (QMI) is available in:

- our [Construction output QMI](#)
- our [Construction output price indices \(OPIs\) QMI](#)
- our [New orders in construction QMI](#)

Reasons for revisions to construction output in this release

This release contains revisions to construction output estimates from April 2024 onwards, and is consistent with the [National Accounts Revisions Policy](#). Revisions in this release are a result of:

- revisions in the nominal data; this includes revisions to the survey data
- revisions to seasonal adjustment factors, which are re-estimated every month and reviewed annually
- revisions to the input series for the Construction Output Price Indices (OPIs)

For further information on the revisions profile, see our [Output in the construction industry revisions triangle \(one-month growth\) dataset](#) and our [Output in the construction industry revisions triangle \(three-month growth\) dataset](#).

Subnational and subsector construction output

Data on new orders supplied by Barbour ABI are used to model the breakdown of the overall output figures for Great Britain into the lower level and regional data. This is shown in Tables 1 and 2 of our [Output in the construction industry: subnational and subsector dataset](#). More detail is available in our [Quality assurance of administrative data used in construction statistics methodology](#).

Bias adjustment

Typically, since the move to monthly gross domestic product (GDP) estimates, an adjustment to address any bias in survey responses for construction output is applied to the early construction output monthly estimates. We show this in our [Improvements to construction statistics: Addressing the bias in early estimates of construction output, June 2018 article](#).

Response rates for June 2024 showed improvement compared with levels in recent years since the coronavirus (COVID-19) pandemic. The survey turnover response rate for June 2024 was 74.4%. This follows a response rate of 77.0% in May and 75.7% in April. We have continued not to apply a bias adjustment since May 2020 while we review this approach. More information on our response rates is available in our [Output in the construction industry dataset](#).

Differences with Monthly GDP construction estimates

In Blue Book 2021, we introduced a new framework to improve how we produce volume estimates of GDP for balanced years as part of the supply use process. This was explained in our [Producing an alternative approach to GDP using experimental double deflation estimates article](#). This framework included the implementation of double-deflated industry-level gross value added (GVA) for the first time. This improvement was reflected in the [GDP quarterly national accounts, UK: April to June 2021 bulletin and dataset](#) and [GDP monthly estimate, UK: August 2021 bulletin](#) for the first time.

As a result, volume estimates in the monthly GDP and construction outputs releases will differ for the period 1997 to 2020. This is because the construction publication measures the volume of construction work (output), while the GDP series measures GVA (that is, output minus intermediate consumption). Construction estimates will align, but on a growth basis from January 2021 onwards.

Information and indicative effects of this change to industry-level GVA volume can be found in our [Impact of double deflation on industry chain volume measure annual estimates article](#) and our [Impact of Blue Book 2021 changes on quarterly volume estimates of gross domestic product by industry article](#).

Accredited official statistics

These accredited official statistics were independently reviewed by the Office for Statistics Regulation in March 2019. They comply with the standards of trustworthiness, quality and value in [the Code of Practice for Statistics](#) (opens in a new tab) and should be labelled “accredited official statistics”.

Bluebook 2024 publication update

The 2024 UK annual national accounts, also known as Blue Book 2024, will incorporate a number of methodological changes focused on data pertaining to recent years, along with the addition of more recent survey and administrative information.

On 7 August we published our [Blue Book 2024: advanced aggregate estimates article](#) to give users details of the impact of the 2024 UK national accounts update on current price and chained volumes measure estimates of GDP from 1997 to 2022.

This estimates 2022 for the first time using the supply and use tables (SUTs) framework, as well as improving the estimates of 2021 with more recent data. We have also implemented outstanding classification decisions affecting the public sector, as well as improvements to the UK trade gas exports deflator. Additionally, we have updated the base year to 2022 after holding this fixed since the start of the coronavirus (COVID-19) pandemic.

The next Quarterly National Accounts release on 30 September 2024 will incorporate these revisions in our official estimates in line with our [National Accounts Revision Policy](#). These will be incorporated into our monthly Construction estimates in our release on 11 October 2024.

Until the Blue Book 2024 data are incorporated into our monthly Construction estimates on 11 October 2024, our monthly GDP estimates will continue to have a reference and base year of 2019.

8 . Related links

[Construction statistics: sources and outputs](#)

Methodology | Released 18 November 2022

A list of the known sources of information available on the construction industry and their outputs.

[GDP monthly estimate, UK: June 2024](#)

Bulletin | Released 15 August 2024

Gross domestic product (GDP) measures the value of goods and services produced in the UK and estimates the size of and growth in the economy.

[Index of Services, UK: June 2024](#)

Bulletin | Released 15 August 2024

Monthly movements in output for the services industries.

[Index of Production, UK: June 2024](#)

Bulletin | Released 15 August 2024

Movements in the volume of production for the UK production industries: manufacturing, mining and quarrying, energy supply, and water and waste management.

[Construction statistics, Great Britain: 2022](#)

Bulletin | Released 28 November 2023

A wide range of statistics and analysis on the construction industry in Great Britain in 2021.

[Business insights and impact on the UK economy: 1 August 2024](#)

Bulletin | Released 1 August 2024

Experimental data from the voluntary fortnightly business survey (BICS) about financial performance, workforce, prices, trade, and business resilience.

9 . Cite this statistical bulletin

Office for National Statistics (ONS), published 15 August 2024, ONS website, statistical bulletin, [Construction output in Great Britain: June 2024, new orders and Construction Output Price Indices, April to June 2024](#)

1A.A CONSTRUCTION OUTPUT: VOLUME SEASONALLY ADJUSTED INDEX NUMBERS BY SECTOR

Index 2019 = 100

	New Housing			Other New Work				Repair and Maintenance					All Repair and Maintena- nce	All Work
	Public housing	Private housing	Total new housing	Infra- structure	Excluding Infrastructure			All new work	Housing			Non housing R&M		
					Public	Private industri- al	Private commerci- al		Public housing	Private housing	Total housing			
	MV36	MV37	MVL7	MV38	MV39	MV3A	MV3B	MV3C	MV3D	MV3E	MV3F	MV3G	MV3H	MV3I
1997	30.8	44.8	42.5	61.2	57.6	152.3	84.3	63.5	124.1	92.9	101.7	79.2	89.3	72.0
1998	24.9	45.2	42.0	59.5	60.7	155.2	91.3	65.2	115.9	94.8	100.2	80.0	89.1	73.1
1999	21.6	40.7	37.7	57.9	68.3	160.1	102.3	67.2	111.2	93.7	97.8	79.6	87.7	74.0
2000	27.1	45.5	42.6	54.3	64.7	142.9	103.0	67.3	107.6	94.1	96.9	83.8	89.5	74.6
2001	27.7	42.4	40.1	58.1	65.3	146.0	102.3	67.2	101.8	98.2	97.5	91.4	94.0	76.0
2002	31.4	46.3	43.9	65.7	82.6	115.8	105.7	71.3	96.6	106.4	100.8	97.5	98.7	80.3
2003	35.7	57.7	54.2	62.0	103.7	122.3	101.8	75.6	109.2	103.9	103.5	100.2	101.4	84.2
2004	42.9	70.2	65.8	54.1	116.4	125.9	112.3	82.8	119.8	100.9	105.0	95.8	99.7	88.7
2005	40.3	72.2	67.2	51.9	104.8	123.4	107.4	80.4	119.0	91.9	98.7	98.2	98.1	86.5
2006	47.6	72.4	68.5	47.8	96.2	133.8	116.6	82.5	113.9	86.2	93.2	98.4	95.7	87.2
2007	54.9	71.3	68.6	47.2	94.6	130.6	128.3	85.4	107.9	84.1	90.0	100.7	95.3	89.1
2008	49.6	55.3	54.3	52.4	105.3	101.1	129.9	80.9	111.1	85.0	91.6	104.1	97.7	86.7
2009	50.6	38.0	39.9	60.0	127.4	70.9	97.3	68.5	108.0	74.3	83.1	94.0	88.4	75.3
2010	79.2	46.1	51.1	76.5	168.0	78.7	95.2	79.6	117.3	81.4	90.8	80.3	85.7	81.7
2011	81.2	50.1	54.8	79.1	155.0	70.9	96.6	80.4	107.4	81.6	88.4	84.5	86.5	82.5
2012	67.8	48.1	51.1	70.2	122.1	75.5	86.8	71.9	110.6	76.9	85.8	85.0	85.4	76.5
2013	71.9	52.8	55.7	71.4	111.1	69.5	87.5	72.8	106.8	79.2	86.4	87.8	87.1	77.8
2014	95.3	67.3	71.6	70.8	112.1	81.8	93.3	81.3	110.6	86.0	92.5	94.3	93.4	85.5
2015	79.9	74.0	74.9	84.4	112.9	91.8	95.8	86.5	111.8	88.4	94.6	91.3	93.0	88.7
2016	75.9	83.6	82.4	83.4	117.4	85.9	103.2	91.4	106.4	93.4	96.8	91.6	94.3	92.4
2017	88.4	90.4	90.1	93.7	114.8	86.7	109.6	98.0	103.6	99.7	100.7	95.4	98.1	98.0
2018	86.1	95.4	94.0	97.0	101.9	95.5	101.9	97.5	99.5	99.4	99.4	98.5	98.9	98.0
2019	100.0	100.0	100.0	100.0	100.0	100.0	100.0	100.0	100.0	100.0	100.0	100.0	100.0	100.0
2020	67.5	81.4	79.3	95.2	92.2	82.1	78.3	83.5	83.1	88.9	87.3	92.3	89.8	85.7
2021	67.2	94.7	90.5	121.3	91.0	83.1	72.6	91.6	88.2	111.7	105.5	105.5	105.5	96.4
2022	73.9	105.0	100.3	121.2	82.3	119.1	72.3	96.4	86.4	125.8	115.4	115.2	115.3	103.0
2023	77.3	90.3	88.3	126.1	91.4	118.0	76.6	94.5	92.7	133.8	123.0	127.3	125.1	105.1

Users of these data should note that there may be instances where the period on period growths for the same component differ between tables. This is due to the growth rates being calculated at a higher precision than 1 dp within the production system. This accuracy is truncated when transferred into the published tables.

1A.Q CONSTRUCTION OUTPUT: VOLUME SEASONALLY ADJUSTED INDEX NUMBERS BY SECTOR

Index 2019 = 100

	New Housing				Other New Work				Repair and Maintenance				All Repair and Mainte- nance	All Work
	Public housing	Private housing	Total new housing	Infra- struc- ture	Excluding Infrastructure			All new work	Housing			Non housing R&M		
					Public	Private industri- al	Private commerci- al		Public housing	Private housing	Total housing			
	MV36	MV37	MVL7	MV38	MV39	MV3A	MV3B	MV3C	MV3D	MV3E	MV3F	MV3G	MV3H	MV3I
2009 Q3	52.9	36.2	38.7	60.4	133.5	68.1	92.2	67.1	114.1	78.4	87.7	99.0	93.2	75.9
Q4	61.6	38.0	41.5	71.4	146.5	72.8	84.3	69.7	109.3	69.2	79.8	90.5	85.1	75.0
2010 Q1	72.3	41.5	46.1	79.5	163.4	74.9	92.7	77.0	117.6	75.4	86.5	76.9	81.7	78.6
Q2	76.3	45.5	50.2	81.9	170.4	77.6	94.5	80.3	120.6	80.4	91.0	82.1	86.6	82.5
Q3	85.3	48.9	54.4	76.3	164.7	90.2	99.5	82.3	116.8	85.6	93.9	80.3	87.1	84.0
Q4	83.0	48.6	53.8	68.1	173.4	72.1	94.2	78.9	114.4	84.0	92.0	82.1	87.1	81.8
2011 Q1	87.4	49.9	55.5	77.0	173.6	71.7	92.8	81.0	109.2	81.8	89.0	83.8	86.4	82.9
Q2	83.6	50.3	55.4	82.8	160.1	73.4	96.9	82.0	108.8	81.5	88.7	82.7	85.8	83.3
Q3	77.8	50.9	54.9	77.9	147.2	68.4	97.5	79.6	105.3	79.6	86.4	85.2	85.8	81.8
Q4	76.0	49.3	53.4	78.6	139.2	70.0	99.1	78.9	106.3	83.6	89.5	86.5	88.0	82.1
2012 Q1	73.6	50.4	53.9	70.4	133.0	71.9	89.1	74.4	106.8	80.4	87.3	85.9	86.6	78.6
Q2	65.1	47.9	50.5	66.4	125.3	73.7	90.7	72.1	110.0	77.3	85.9	85.4	85.7	76.8
Q3	66.1	46.5	49.5	71.2	117.3	75.8	82.6	69.9	113.1	75.7	85.5	83.9	84.7	75.0
Q4	66.2	47.8	50.6	72.9	112.9	80.8	84.7	71.1	112.5	74.3	84.4	84.5	84.5	75.7
2013 Q1	67.1	48.5	51.4	70.4	109.5	76.3	85.5	70.6	108.2	76.1	84.6	85.3	84.9	75.5
Q2	69.2	51.8	54.4	70.6	113.2	66.9	85.3	71.6	106.0	78.8	86.0	85.6	85.8	76.5
Q3	71.1	53.9	56.5	70.4	113.1	66.7	90.6	73.8	105.0	80.9	87.2	89.5	88.4	78.8
Q4	80.2	57.1	60.6	74.4	108.6	67.8	88.6	75.4	107.9	80.8	88.0	90.7	89.3	80.2
2014 Q1	88.6	63.0	66.9	70.5	107.7	76.1	91.4	78.2	109.1	86.3	92.3	90.4	91.4	82.7
Q2	96.7	66.3	70.9	68.7	112.4	86.3	93.3	80.9	110.3	86.0	92.4	95.4	93.9	85.4
Q3	99.4	69.7	74.2	70.0	112.5	84.0	93.0	82.2	112.0	87.0	93.6	96.3	94.9	86.6
Q4	96.6	70.3	74.3	74.0	115.8	81.0	95.5	83.9	111.0	84.7	91.7	95.2	93.4	87.2
2015 Q1	92.4	72.3	75.3	83.3	110.6	89.6	95.0	85.9	112.6	85.4	92.6	93.9	93.3	88.5
Q2	85.7	75.2	76.8	85.3	113.2	90.4	95.6	87.4	111.9	88.7	94.8	90.0	92.5	89.1
Q3	71.4	72.3	72.2	84.4	112.9	95.7	94.4	85.3	112.9	89.4	95.6	89.8	92.8	87.9
Q4	69.9	76.0	75.1	84.8	114.8	91.4	98.1	87.4	110.0	90.1	95.4	91.5	93.4	89.5
2016 Q1	77.3	81.7	81.1	81.6	112.1	83.8	100.9	89.3	111.6	91.7	96.9	90.6	93.8	90.9
Q2	73.7	83.6	82.1	80.1	121.4	89.9	102.5	91.0	108.3	92.6	96.7	92.3	94.5	92.2
Q3	74.8	83.8	82.4	85.3	118.1	83.4	104.4	92.0	101.9	93.7	95.8	91.1	93.5	92.5
Q4	77.9	85.2	84.1	86.7	118.1	86.2	104.8	93.2	103.8	95.8	97.9	92.5	95.2	93.9
2017 Q1	87.6	88.4	88.3	92.6	119.7	81.5	111.8	97.8	103.2	98.1	99.5	94.8	97.2	97.6
Q2	88.6	88.4	88.4	93.5	117.5	84.0	111.4	97.8	104.7	99.4	100.8	95.3	98.1	97.9
Q3	88.3	89.3	89.1	94.4	109.6	91.8	109.6	97.5	103.7	99.9	100.9	95.4	98.2	97.8
Q4	89.2	95.4	94.5	94.3	112.3	89.5	105.5	98.7	102.8	101.2	101.6	95.8	98.8	98.7
2018 Q1	83.3	94.5	92.8	96.1	99.8	92.1	105.1	97.3	100.4	97.8	98.4	95.1	96.8	97.1
Q2	83.9	92.3	91.0	95.5	99.7	98.3	103.1	96.2	101.0	101.1	101.1	99.3	100.2	97.6
Q3	87.6	96.8	95.4	96.8	104.0	94.9	99.0	97.4	99.5	100.1	99.9	101.8	100.9	98.6
Q4	89.5	97.9	96.7	99.7	104.2	96.6	100.5	99.0	97.1	98.5	98.1	97.7	97.9	98.6
2019 Q1	97.1	100.9	100.3	101.8	102.5	100.1	98.8	100.4	97.9	101.2	100.3	101.5	100.9	100.6
Q2	103.6	98.2	99.0	101.0	98.8	98.2	99.7	99.5	98.3	99.7	99.4	101.5	100.4	99.8
Q3	96.5	101.9	101.1	99.5	100.0	100.9	101.0	100.7	101.6	99.7	100.2	99.3	99.7	100.3
Q4	102.8	99.0	99.6	97.7	98.6	100.9	100.5	99.4	102.1	99.4	100.1	97.7	98.9	99.3
2020 Q1	100.7	97.3	97.8	99.2	102.1	105.8	96.7	98.6	105.7	93.0	96.4	97.1	96.7	97.9
Q2	37.9	47.9	46.3	84.2	79.5	67.5	60.0	61.5	53.8	57.6	56.6	75.7	66.0	63.0
Q3	64.7	86.6	83.3	97.0	92.0	75.7	78.4	85.2	81.6	99.5	94.8	96.8	95.8	88.8
Q4	66.7	93.7	89.6	100.5	95.2	79.5	78.1	88.7	91.1	105.3	101.5	99.5	100.5	92.8
2021 Q1	74.3	94.9	91.8	108.1	95.5	76.1	76.6	90.6	89.3	105.5	101.2	103.3	102.2	94.6
Q2	70.7	95.6	91.8	125.9	92.9	76.5	75.9	93.7	88.3	107.4	102.4	107.7	105.0	97.6
Q3	69.7	92.8	89.3	129.4	88.5	84.2	68.5	91.5	86.9	111.9	105.3	103.2	104.3	95.9
Q4	54.0	95.4	89.1	121.9	86.9	95.7	69.4	90.6	88.2	121.9	113.1	107.8	110.5	97.4
2022 Q1	75.2	100.1	96.3	122.4	83.4	106.2	70.2	94.0	85.8	123.5	113.6	112.7	113.2	100.6
Q2	74.2	105.9	101.1	117.9	82.2	118.6	71.7	95.9	89.0	123.5	114.4	114.8	114.6	102.4
Q3	68.9	107.7	101.8	117.2	78.4	127.0	73.2	96.5	84.4	129.1	117.3	115.7	116.5	103.4
Q4	77.4	106.2	101.8	127.3	85.2	124.8	74.3	99.3	86.5	127.0	116.3	117.6	117.0	105.4
2023 Q1	75.8	97.0	93.8	124.2	86.9	125.5	76.7	96.3	91.4	130.7	120.4	120.4	120.4	104.6
Q2	76.9	92.3	90.0	129.2	95.4	119.8	73.7	95.5	92.7	132.1	121.7	125.0	123.3	105.1
Q3	77.9	89.2	87.5	130.1	91.3	113.3	78.7	95.3	90.8	132.6	121.6	129.8	125.6	105.8
Q4	78.7	82.6	82.0	120.9	91.9	113.3	77.4	90.9	96.0	139.7	128.2	134.0	131.1	104.8
2024 Q1	78.1	85.3	84.2	116.3	90.2	110.7	74.3	89.8	95.3	144.8	131.8	130.7	131.3	104.2
Q2	71.7	84.6	82.7	115.6	92.5	111.1	74.6	89.4	94.6	141.1	128.8	134.7	131.7	104.0

Users of these data should note that there may be instances where the period on period growths for the same component differ between tables. This is due to the growth rates being calculated at a higher precision than 1 dp within the production system. This accuracy is truncated when transferred into the published tables.

1B.A CONSTRUCTION OUTPUT: VOLUME NON-SEASONALLY ADJUSTED INDEX NUMBERS BY SECTOR

Index 2019 = 100

	New Housing			Other New Work				Repair and Maintenance					All Repair and Maintenance	All Work
	Public housing	Private housing	Total new housing	Infra-structure	Excluding Infrastructure			All new work	Housing			Non housing R&M		
					Public	Private industrial	Private commercial		Public housing	Private housing	Total housing			
	MV3J	MV3K	MVL8	MV3L	MV3M	MV3N	MV3O	MV3P	MV3Q	MV3R	MV3S	MV3T	MV3U	MV3V
1997	30.7	45.5	43.3	60.7	56.7	150.0	82.4	63.5	124.2	93.6	101.7	75.3	88.6	72.2
1998	24.8	45.9	42.7	59.0	59.7	152.7	89.3	65.1	115.9	95.5	100.9	76.1	88.6	73.3
1999	21.6	41.5	38.5	57.6	67.6	158.2	100.4	67.0	111.7	94.7	99.2	76.0	87.7	74.2
2000	27.1	46.3	43.4	53.9	63.8	140.9	100.9	67.2	107.8	94.9	98.3	79.7	89.2	74.8
2001	27.7	43.2	40.8	57.7	64.4	143.9	100.1	66.9	101.9	99.1	99.8	87.0	93.5	76.1
2002	31.4	47.0	44.6	65.2	81.4	114.0	103.4	70.9	96.7	107.2	104.5	92.7	98.7	80.5
2003	35.7	58.8	55.3	61.5	102.3	120.6	99.7	75.6	109.4	104.9	106.0	95.4	100.8	84.3
2004	43.1	71.7	67.3	53.9	115.3	124.6	110.4	83.1	120.4	102.2	107.0	91.5	99.4	88.7
2005	40.6	73.9	68.8	51.8	103.9	122.4	105.8	80.9	119.9	93.3	100.3	94.0	97.2	86.6
2006	48.0	74.4	70.4	47.9	95.9	133.3	115.3	83.1	115.2	87.9	95.1	94.7	94.9	87.2
2007	55.6	73.5	70.8	47.4	94.6	130.6	127.4	86.1	109.6	86.0	92.2	97.2	94.7	89.1
2008	50.3	57.1	56.1	52.8	105.4	101.2	129.1	81.2	112.9	87.1	93.9	100.6	97.2	86.8
2009	51.3	39.2	41.1	60.5	127.5	71.0	96.6	68.7	109.7	76.1	84.9	90.8	87.8	75.3
2010	79.2	46.1	51.1	76.5	168.0	78.7	95.2	79.6	117.3	81.4	90.8	80.3	85.7	81.7
2011	81.2	50.1	54.8	79.1	155.0	70.9	96.6	80.4	107.4	81.6	88.4	84.5	86.5	82.5
2012	67.8	48.1	51.1	70.2	122.1	75.5	86.8	71.9	110.6	76.9	85.8	85.0	85.4	76.5
2013	71.9	52.8	55.7	71.4	111.1	69.5	87.5	72.8	106.8	79.2	86.4	87.8	87.1	77.8
2014	95.3	67.3	71.6	70.8	112.1	81.8	93.3	81.3	110.6	86.0	92.5	94.3	93.4	85.5
2015	79.9	74.0	74.9	84.4	112.9	91.8	95.8	86.5	111.8	88.4	94.6	91.3	93.0	88.7
2016	75.9	83.6	82.4	83.4	117.4	85.9	103.2	91.4	106.4	93.4	96.8	91.6	94.3	92.4
2017	88.4	90.4	90.1	93.7	114.8	86.7	109.6	98.0	103.6	99.7	100.7	95.4	98.1	98.0
2018	86.1	95.4	94.0	97.0	101.9	95.5	101.9	97.5	99.5	99.4	99.4	98.5	98.9	98.0
2019	100.0	100.0	100.0	100.0	100.0	100.0	100.0	100.0	100.0	100.0	100.0	100.0	100.0	100.0
2020	67.5	81.4	79.3	95.2	92.2	82.1	78.3	83.5	83.1	88.9	87.3	92.3	89.8	85.7
2021	67.2	94.7	90.5	121.3	91.0	83.1	72.6	91.6	88.2	111.7	105.5	105.5	105.5	96.4
2022	73.9	105.0	100.3	121.2	82.3	119.1	72.3	96.4	86.4	125.8	115.4	115.2	115.3	103.0
2023	77.3	90.3	88.3	126.1	91.4	118.0	76.6	94.5	92.7	133.8	123.0	127.3	125.1	105.1

Users of these data should note that there may be instances where the period on period growths for the same component differ between tables. This is due to the growth rates being calculated at a higher precision than 1 dp within the production system. This accuracy is truncated when transferred into the published tables.

2A.A CONSTRUCTION OUTPUT: VOLUME SEASONALLY ADJUSTED BY SECTOR

£ million

	New Housing				Other New Work				Repair and Maintenance					All Repair and Maintena- nce	All Work
	Public housing	Private housing	Total new housing	Infrastr- ucture	Excluding Infrastructure			All new work	Housing			Non housing R&M			
					Public	Private industri- al	Private commerci- al		Public housing	Private housing	Total housing				
	MV3W	MV3X	MVL9	MV3Y	MV3Z	MV42	MV43	MV44	MV45	MV46	MV47	MV48	MV49	MV4A	
1997	2 158	17 588	19 690	14 015	6 010	8 721	25 517	73 450	10 133	21 199	31 518	23 909	54 633	127 322	
1998	1 748	17 764	19 448	13 627	6 334	8 885	27 655	75 383	9 466	21 643	31 050	24 173	54 497	129 213	
1999	1 515	15 980	17 436	13 247	7 129	9 167	30 963	77 640	9 079	21 374	30 317	24 039	53 685	130 838	
2000	1 901	17 853	19 693	12 430	6 753	8 182	31 200	77 782	8 787	21 471	30 023	25 301	54 790	131 986	
2001	1 946	16 665	18 556	13 311	6 816	8 359	30 975	77 710	8 310	22 415	30 224	27 618	57 493	134 331	
2002	2 202	18 161	20 306	15 051	8 626	6 632	31 998	82 489	7 884	24 272	31 241	29 442	60 396	142 034	
2003	2 506	22 672	25 101	14 188	10 823	7 002	30 835	87 452	8 914	23 714	32 085	30 263	62 061	148 865	
2004	3 010	27 547	30 464	12 382	12 153	7 212	34 006	95 734	9 780	23 037	32 549	28 927	61 015	156 774	
2005	2 831	28 353	31 082	11 876	10 936	7 069	32 530	92 967	9 719	20 983	30 585	29 667	60 035	152 957	
2006	3 337	28 439	31 683	10 948	10 045	7 664	35 307	95 385	9 300	19 679	28 891	29 737	58 537	154 140	
2007	3 854	27 976	31 750	10 797	9 876	7 481	38 860	98 744	8 812	19 187	27 891	30 432	58 299	157 468	
2008	3 483	21 709	25 139	12 001	10 986	5 790	39 319	93 480	9 070	19 402	28 375	31 443	59 805	153 350	
2009	3 553	14 918	18 456	13 747	13 295	4 063	29 455	79 160	8 821	16 961	25 741	28 387	54 119	133 114	
2010	5 559	18 109	23 668	17 506	17 531	4 505	28 837	92 049	9 582	18 567	28 149	24 267	52 416	144 464	
2011	5 696	19 671	25 367	18 101	16 183	4 060	29 247	92 958	8 771	18 626	27 397	25 539	52 936	145 894	
2012	4 754	18 898	23 652	16 079	12 744	4 326	26 285	83 087	9 030	17 553	26 583	25 663	52 247	135 334	
2013	5 044	20 748	25 792	16 359	11 594	3 977	26 496	84 218	8 718	18 063	26 782	26 510	53 292	137 510	
2014	6 688	26 441	33 129	16 215	11 699	4 686	28 240	93 970	9 030	19 627	28 656	28 491	57 147	151 117	
2015	5 605	29 037	34 642	19 332	11 780	5 256	28 995	100 005	9 133	20 182	29 315	27 585	56 900	156 905	
2016	5 326	32 814	38 140	19 101	12 256	4 916	31 237	105 650	8 690	21 317	30 007	27 677	57 684	163 335	
2017	6 205	35 476	41 681	21 454	11 978	4 965	33 180	113 258	8 458	22 743	31 201	28 807	60 008	173 266	
2018	6 041	37 448	43 489	22 219	10 635	5 467	30 864	112 674	8 124	22 676	30 800	29 745	60 545	173 219	
2019	7 017	39 263	46 280	22 898	10 437	5 726	30 279	115 621	8 166	22 821	30 987	30 208	61 195	176 815	
2020	4 737	31 945	36 682	21 806	9 622	4 703	23 711	96 524	6 782	20 277	27 059	27 867	54 926	151 450	
2021	4 713	37 176	41 889	27 777	9 493	4 761	21 986	105 905	7 200	25 488	32 688	31 869	64 557	170 462	
2022	5 188	41 221	46 409	27 752	8 590	6 823	21 898	111 472	7 056	28 706	35 762	34 804	70 567	182 039	
2023	5 425	35 457	40 883	28 876	9 535	6 754	23 205	109 254	7 574	30 530	38 104	38 453	76 557	185 811	

Users of these data should note that there may be instances where the period on period growths for the same component differ between tables. This is due to the growth rates being calculated at a higher precision than 1 dp within the production system. This accuracy is truncated when transferred into the published tables.

2B.A CONSTRUCTION OUTPUT: VOLUME NON-SEASONALLY ADJUSTED BY SECTOR

£ million

	New Housing			Other New Work					Repair and Maintenance					All Repair and Maintenance	All Work
	Public housing	Private housing	Total new housing	Infra-structure	Excluding Infrastructure			All new work	Housing			Non housing R&M			
					Public	Private industrial	Private commercial		Public housing	Private housing	Total housing				
	MV4B	MV4C	MVLR	MV4D	MV4E	MV4F	MV4G	MV4H	MV4I	MV4J	MV4K	MV4L	MV4M	MV4N	
1997	2 155	17 873	20 028	13 894	5 922	8 588	24 953	73 386	10 140	21 364	31 503	22 738	54 241	127 627	
1998	1 742	18 038	19 781	13 501	6 235	8 743	27 029	75 289	9 467	21 799	31 266	22 975	54 241	129 529	
1999	1 517	16 300	17 817	13 182	7 051	9 060	30 398	77 508	9 119	21 623	30 742	22 946	53 689	131 197	
2000	1 901	18 163	20 064	12 338	6 662	8 068	30 551	77 684	8 804	21 669	30 473	24 090	54 563	132 247	
2001	1 945	16 955	18 900	13 203	6 722	8 242	30 321	77 389	8 324	22 611	30 934	26 293	57 227	134 616	
2002	2 200	18 462	20 663	14 927	8 498	6 531	31 308	81 926	7 895	24 474	32 369	28 015	60 384	142 310	
2003	2 508	23 072	25 580	14 080	10 676	6 905	30 197	87 438	8 931	23 930	32 862	28 822	61 684	149 122	
2004	3 024	28 138	31 162	12 337	12 035	7 138	33 424	96 095	9 833	23 332	33 166	27 646	60 811	156 906	
2005	2 848	29 007	31 855	11 853	10 844	7 011	32 030	93 593	9 788	21 292	31 080	28 404	59 484	153 078	
2006	3 371	29 221	32 591	10 973	10 008	7 633	34 911	96 115	9 407	20 056	29 463	28 592	58 056	154 171	
2007	3 902	28 849	32 752	10 860	9 874	7 478	38 562	99 525	8 947	19 622	28 570	29 367	57 936	157 461	
2008	3 531	22 423	25 954	12 090	11 000	5 794	39 080	93 918	9 223	19 874	29 097	30 391	59 488	153 406	
2009	3 603	15 398	19 001	13 842	13 304	4 064	29 260	79 471	8 962	17 361	26 323	27 421	53 743	133 215	
2010	5 559	18 109	23 668	17 506	17 531	4 505	28 837	92 049	9 582	18 567	28 149	24 267	52 416	144 464	
2011	5 696	19 671	25 367	18 101	16 183	4 060	29 247	92 958	8 771	18 626	27 397	25 539	52 936	145 894	
2012	4 754	18 898	23 652	16 079	12 744	4 326	26 285	83 087	9 030	17 553	26 583	25 663	52 247	135 334	
2013	5 044	20 748	25 792	16 359	11 594	3 977	26 496	84 218	8 718	18 063	26 782	26 510	53 292	137 510	
2014	6 688	26 441	33 129	16 215	11 699	4 686	28 240	93 970	9 030	19 627	28 656	28 491	57 147	151 117	
2015	5 605	29 037	34 642	19 332	11 780	5 256	28 995	100 005	9 133	20 182	29 315	27 585	56 900	156 905	
2016	5 326	32 814	38 140	19 101	12 256	4 916	31 237	105 650	8 690	21 317	30 007	27 677	57 684	163 335	
2017	6 205	35 476	41 681	21 454	11 978	4 965	33 180	113 258	8 458	22 743	31 201	28 807	60 008	173 266	
2018	6 041	37 448	43 489	22 219	10 635	5 467	30 864	112 674	8 124	22 676	30 800	29 745	60 545	173 219	
2019	7 017	39 263	46 280	22 898	10 437	5 726	30 279	115 621	8 166	22 821	30 987	30 208	61 195	176 815	
2020	4 737	31 945	36 682	21 806	9 622	4 703	23 711	96 524	6 782	20 277	27 059	27 867	54 926	151 450	
2021	4 713	37 176	41 889	27 777	9 493	4 761	21 986	105 905	7 200	25 488	32 688	31 869	64 557	170 462	
2022	5 188	41 221	46 409	27 752	8 590	6 823	21 898	111 472	7 056	28 706	35 762	34 804	70 567	182 039	
2023	5 425	35 457	40 883	28 876	9 535	6 754	23 205	109 254	7 574	30 530	38 104	38 453	76 557	185 811	

Users of these data should note that there may be instances where the period on period growths for the same component differ between tables. This is due to the growth rates being calculated at a higher precision than 1 dp within the production system. This accuracy is truncated when transferred into the published tables.

3A.A CONSTRUCTION OUTPUT: VOLUME SEASONALLY ADJUSTED PERCENTAGE CHANGE ON SAME PERIOD A YEAR EARLIER

%

	New Housing			Other New Work				Repair and Maintenance					All Repair and Maintena- nce	All Work
	Public housing	Private housing	Total housing	Infra- struc- ture	Excluding Infrastructure			All new work	Housing			Non housing R&M		
					Public	Private industri- al	Private commerci- al		Public housing	Private housing	Total housing			
	MV5H	MV5I	MVM3	MV5J	MV5K	MV5L	MV5M	MV5N	MV5O	MV5P	MV5Q	MV5R	MV5S	MV5T
1998	-19.0	1.0	-1.2	-2.8	5.4	1.9	8.4	2.6	-6.6	2.1	-1.5	1.1	-0.2	1.5
1999	-13.3	-10.0	-10.3	-2.8	12.6	3.2	12.0	3.0	-4.1	-1.2	-2.4	-0.6	-1.5	1.3
2000	25.5	11.7	12.9	-6.2	-5.3	-10.7	0.8	0.2	-3.2	0.5	-1.0	5.3	2.1	0.9
2001	2.3	-6.7	-5.8	7.1	0.9	2.2	-0.7	-0.1	-5.4	4.4	0.7	9.2	4.9	1.8
2002	13.2	9.0	9.4	13.1	26.5	-20.7	3.3	6.1	-5.1	8.3	3.4	6.6	5.1	5.7
2003	13.8	24.8	23.6	-5.7	25.5	5.6	-3.6	6.0	13.1	-2.3	2.7	2.8	2.8	4.8
2004	20.1	21.5	21.4	-12.7	12.3	3.0	10.3	9.5	9.7	-2.9	1.4	-4.4	-1.7	5.3
2005	-5.9	2.9	2.0	-4.1	-10.0	-2.0	-4.3	-2.9	-0.6	-8.9	-6.0	2.6	-1.6	-2.4
2006	17.9	0.3	1.9	-7.8	-8.1	8.4	8.5	2.6	-4.3	-6.2	-5.5	0.2	-2.5	0.8
2007	15.5	-1.6	0.2	-1.4	-1.7	-2.4	10.1	3.5	-5.3	-2.5	-3.5	2.3	-0.4	2.2
2008	-9.6	-22.4	-20.8	11.2	11.2	-22.6	1.2	-5.3	2.9	1.1	1.7	3.3	2.6	-2.6
2009	2.0	-31.3	-26.6	14.5	21.0	-29.8	-25.1	-15.3	-2.7	-12.6	-9.3	-9.7	-9.5	-13.2
2010	56.5	21.4	28.2	27.3	31.9	10.9	-2.1	16.3	8.6	9.5	9.4	-14.5	-3.1	8.5
2011	2.5	8.6	7.2	3.4	-7.7	-9.9	1.4	1.0	-8.5	0.3	-2.7	5.2	1.0	1.0
2012	-16.5	-3.9	-6.8	-11.2	-21.2	6.6	-10.1	-10.6	3.0	-5.8	-3.0	0.5	-1.3	-7.2
2013	6.1	9.8	9.0	1.7	-9.0	-8.1	0.8	1.4	-3.5	2.9	0.7	3.3	2.0	1.6
2014	32.6	27.4	28.4	-0.9	0.9	17.8	6.6	11.6	3.6	8.7	7.0	7.5	7.2	9.9
2015	-16.2	9.8	4.6	19.2	0.7	12.2	2.7	6.4	1.1	2.8	2.3	-3.2	-0.4	3.8
2016	-5.0	13.0	10.1	-1.2	4.0	-6.5	7.7	5.6	-4.9	5.6	2.4	0.3	1.4	4.1
2017	16.5	8.1	9.3	12.3	-2.3	1.0	6.2	7.2	-2.7	6.7	4.0	4.1	4.0	6.1
2018	-2.6	5.6	4.3	3.6	-11.2	10.1	-7.0	-0.5	-4.0	-0.3	-1.3	3.3	0.9	-
2019	16.1	4.8	6.4	3.1	-1.9	4.8	-1.9	2.6	0.5	0.6	0.6	1.6	1.1	2.1
2020	-32.5	-18.6	-20.7	-4.8	-7.8	-17.9	-21.7	-16.5	-16.9	-11.1	-12.7	-7.7	-10.2	-14.3
2021	-0.5	16.4	14.2	27.4	-1.3	1.2	-7.3	9.7	6.2	25.7	20.8	14.4	17.5	12.6
2022	10.1	10.9	10.8	-0.1	-9.5	43.3	-0.4	5.3	-2.0	12.6	9.4	9.2	9.3	6.8
2023	4.6	-14.0	-11.9	4.1	11.0	-1.0	6.0	-2.0	7.3	6.4	6.5	10.5	8.5	2.1

Users of these data should note that there may be instances where the period on period growths for the same component differ between tables. This is due to the growth rates being calculated at a higher precision than 1 dp within the production system. This accuracy is truncated when transferred into the published tables.

3A.Q CONSTRUCTION OUTPUT: VOLUME SEASONALLY ADJUSTED PERCENTAGE CHANGE ON PREVIOUS QUARTER

%

	New Housing				Other New Work			Repair and Maintenance						
	Public housing	Private housing	Total new housing	Infra-structure	Excluding Infrastructure			All new work	Housing			Non housing R&M	All Repair and Maintenance	All Work
					Public	Private industrial	Private commercial		Public housing	Private housing	Total housing			
					MV54	MV55	MVM7		MV56	MV57	MV58			
2009 Q3	17.6	-5.1	-1.0	6.9	11.6	-1.4	-10.5	-1.5	7.2	6.8	6.9	7.6	7.3	1.8
Q4	16.4	4.8	7.3	18.2	9.8	6.9	-8.5	3.8	-4.2	-11.7	-9.0	-8.5	-8.7	-1.2
2010 Q1	17.3	9.2	11.0	11.4	11.5	2.9	10.0	10.4	7.6	8.9	8.4	-15.1	-4.0	4.8
Q2	5.6	9.8	8.8	3.0	4.3	3.7	1.9	4.3	2.6	6.6	5.2	6.8	5.9	4.9
Q3	11.7	7.5	8.5	-6.8	-3.3	16.1	5.3	2.5	-3.1	6.5	3.2	-2.2	0.6	1.8
Q4	-2.6	-0.7	-1.2	-10.9	5.2	-20.1	-5.4	-4.1	-2.1	-1.9	-2.0	2.3	-	-2.7
2011 Q1	5.3	2.6	3.2	13.1	0.1	-0.5	-1.4	2.7	-4.5	-2.7	-3.3	2.0	-0.8	1.4
Q2	-4.4	1.0	-0.3	7.6	-7.8	2.4	4.4	1.3	-0.4	-0.3	-0.3	-1.2	-0.8	0.5
Q3	-7.0	1.0	-0.8	-5.9	-8.0	-6.8	0.6	-2.9	-3.2	-2.3	-2.6	3.0	0.1	-1.9
Q4	-2.3	-3.0	-2.8	0.8	-5.4	2.4	1.7	-0.9	0.9	4.9	3.6	1.5	2.6	0.4
2012 Q1	-3.1	2.0	0.9	-10.4	-4.5	2.6	-10.1	-5.7	0.5	-3.8	-2.5	-0.6	-1.6	-4.2
Q2	-11.5	-4.9	-6.3	-5.7	-5.8	2.5	1.8	-3.1	2.9	-3.8	-1.6	-0.6	-1.1	-2.4
Q3	1.5	-2.9	-2.0	7.2	-6.4	2.9	-8.9	-3.1	2.8	-2.1	-0.4	-1.8	-1.1	-2.3
Q4	0.1	2.7	2.2	2.4	-3.8	6.5	2.6	1.7	-0.5	-1.8	-1.3	0.7	-0.3	0.9
2013 Q1	1.4	1.6	1.6	-3.4	-3.0	-5.5	0.9	-0.7	-3.9	2.4	0.2	0.9	0.5	-0.2
Q2	3.1	6.7	6.0	0.3	3.4	-12.4	-0.2	1.6	-2.0	3.5	1.6	0.4	1.0	1.3
Q3	2.7	4.1	3.9	-0.4	-0.1	-0.2	6.2	3.0	-0.9	2.6	1.5	4.6	3.0	3.0
Q4	12.8	5.9	7.2	5.8	-4.0	1.6	-2.2	2.1	2.7	-	0.8	1.3	1.0	1.7
2014 Q1	10.5	10.3	10.4	-5.2	-0.8	12.2	3.1	3.7	1.1	6.8	5.0	-0.3	2.3	3.2
Q2	9.0	5.3	6.0	-2.5	4.4	13.4	2.1	3.4	1.1	-0.4	0.1	5.5	2.7	3.2
Q3	2.9	5.1	4.6	1.8	0.1	-2.6	-0.3	1.7	1.5	1.2	1.3	1.0	1.1	1.5
Q4	-2.9	0.8	0.1	5.8	2.9	-3.7	2.7	2.0	-0.9	-2.6	-2.0	-1.2	-1.6	0.6
2015 Q1	-4.3	2.8	1.4	12.4	-4.5	10.7	-0.5	2.5	1.5	0.8	1.0	-1.3	-0.1	1.5
Q2	-7.2	4.1	2.0	2.5	2.3	0.9	0.6	1.7	-0.7	3.8	2.4	-4.1	-0.8	0.7
Q3	-16.7	-3.8	-6.0	-1.1	-0.2	5.8	-1.2	-2.4	0.9	0.8	0.8	-0.2	0.3	-1.4
Q4	-2.1	5.1	4.0	0.5	1.7	-4.4	3.9	2.5	-2.6	0.8	-0.3	1.8	0.7	1.9
2016 Q1	10.5	7.5	7.9	-3.8	-2.4	-8.3	2.9	2.1	1.5	1.7	1.6	-1.0	0.4	1.5
Q2	-4.7	2.3	1.3	-1.8	8.2	7.2	1.6	1.9	-3.0	1.0	-0.2	1.9	0.8	1.5
Q3	1.6	0.2	0.4	6.5	-2.6	-7.2	1.8	1.1	-5.9	1.2	-0.9	-1.3	-1.1	0.3
Q4	4.1	1.7	2.0	1.6	-0.1	3.4	0.3	1.3	1.8	2.2	2.1	1.6	1.9	1.5
2017 Q1	12.6	3.8	5.0	6.9	1.4	-5.5	6.7	5.0	-0.6	2.5	1.6	2.5	2.0	3.9
Q2	1.1	-	0.2	1.0	-1.9	3.1	-0.4	-	1.4	1.3	1.4	0.6	1.0	0.4
Q3	-0.4	1.0	0.8	0.9	-6.7	9.2	-1.5	-0.3	-0.9	0.4	0.1	0.1	0.1	-0.2
Q4	1.0	6.9	6.0	-0.1	2.4	-2.5	-3.8	1.2	-0.9	1.3	0.7	0.4	0.6	1.0
2018 Q1	-6.5	-1.0	-1.8	1.9	-11.1	2.9	-0.4	-1.4	-2.3	-3.4	-3.1	-0.8	-2.0	-1.6
Q2	0.7	-2.3	-1.9	-0.6	-0.1	6.7	-1.9	-1.1	0.6	3.4	2.7	4.4	3.5	0.5
Q3	4.3	4.9	4.8	1.4	4.3	-3.4	-4.0	1.2	-1.5	-1.0	-1.1	2.6	0.7	1.0
Q4	2.3	1.2	1.3	3.0	0.2	1.7	1.6	1.6	-2.3	-1.6	-1.8	-4.0	-2.9	-
2019 Q1	8.4	3.0	3.8	2.0	-1.6	3.6	-1.8	1.4	0.9	2.7	2.2	3.9	3.0	2.0
Q2	6.8	-2.7	-1.3	-0.8	-3.6	-1.9	0.9	-0.9	0.4	-1.4	-0.9	-	-0.5	-0.7
Q3	-6.8	3.8	2.1	-1.4	1.2	2.7	1.4	1.2	3.3	-	0.8	-2.2	-0.7	0.5
Q4	6.5	-2.9	-1.5	-1.8	-1.4	-	-0.5	-1.2	0.5	-0.3	-	-1.6	-0.8	-1.1
2020 Q1	-2.0	-1.7	-1.8	1.6	3.5	4.9	-3.9	-0.9	3.5	-6.4	-3.8	-0.6	-2.2	-1.3
Q2	-62.4	-50.8	-52.6	-15.2	-22.1	-36.2	-37.9	-37.6	-49.1	-38.1	-41.2	-22.1	-31.7	-35.6
Q3	70.8	81.1	79.8	15.2	15.7	12.2	30.6	38.5	51.5	72.6	67.3	27.9	45.0	40.9
Q4	3.1	8.1	7.5	3.5	3.5	4.9	-0.3	4.2	11.7	5.8	7.1	2.8	5.0	4.5
2021 Q1	11.3	1.3	2.5	7.6	0.4	-4.2	-1.9	2.1	-2.0	0.2	-0.3	3.8	1.7	2.0
Q2	-4.8	0.7	-	16.5	-2.8	0.5	-1.0	3.4	-1.1	1.8	1.1	4.3	2.7	3.2
Q3	-1.5	-2.8	-2.7	2.8	-4.7	10.1	-9.7	-2.4	-1.6	4.2	2.8	-4.2	-0.7	-1.8
Q4	-22.6	2.8	-0.2	-5.8	-1.9	13.6	1.2	-1.0	1.5	9.0	7.4	4.5	6.0	1.6
2022 Q1	39.3	4.9	8.1	0.4	-4.0	11.1	1.2	3.8	-2.8	1.3	0.4	4.6	2.4	3.2
Q2	-1.3	5.8	5.0	-3.6	-1.4	11.6	2.1	2.1	3.7	-	0.8	1.8	1.3	1.8
Q3	-7.1	1.7	0.7	-0.7	-4.7	7.1	2.1	0.6	-5.2	4.5	2.5	0.8	1.7	1.0
Q4	12.3	-1.4	-	8.7	8.7	-1.8	1.5	2.9	2.6	-1.6	-0.8	1.7	0.4	1.9
2023 Q1	-2.2	-8.6	-7.9	-2.4	1.9	0.5	3.3	-3.0	5.6	3.0	3.5	2.3	2.9	-0.7
Q2	1.6	-4.8	-4.0	4.0	9.9	-4.5	-3.9	-0.8	1.4	1.0	1.1	3.9	2.5	0.5
Q3	1.2	-3.4	-2.8	0.7	-4.3	-5.4	6.8	-0.2	-2.0	0.4	-0.1	3.8	1.9	0.6
Q4	1.0	-7.4	-6.3	-7.1	0.6	-	-1.7	-4.5	5.7	5.4	5.5	3.2	4.3	-0.9
2024 Q1	-0.7	3.3	2.7	-3.8	-1.8	-2.3	-4.0	-1.2	-0.8	3.7	2.8	-2.4	0.2	-0.6
Q2	-8.2	-0.8	-1.9	-0.6	2.5	0.3	0.3	-0.5	-0.7	-2.6	-2.2	3.0	0.4	-0.1

Users of these data should note that there may be instances where the period on period growths for the same component differ between tables. This is due to the growth rates being calculated at a higher precision than 1 dp within the production system. This accuracy is truncated when transferred into the published tables.

3B.A CONSTRUCTION OUTPUT: VOLUME SEASONALLY ADJUSTED PERCENTAGE CHANGE ON SAME PERIOD A YEAR EARLIER BY SECTOR

%

	New Housing				Other New Work			Repair and Maintenance						All Repair and Maintena- nce	All Work
	Public housing	Private housing	Total new housing	Infra- struc- ture	Excluding Infrastructure			All new work	Housing			Non housing R&M			
					Public	Private industri- al	Private commerci- al		Public housing	Private housing	Total housing				
	MV5H	MV5I	MVM3	MV5J	MV5K	MV5L	MV5M	MV5N	MV5O	MV5P	MV5Q	MV5R	MV5S	MV5T	
1998	-19.0	1.0	-1.2	-2.8	5.4	1.9	8.4	2.6	-6.6	2.1	-1.5	1.1	-0.2	1.5	
1999	-13.3	-10.0	-10.3	-2.8	12.6	3.2	12.0	3.0	-4.1	-1.2	-2.4	-0.6	-1.5	1.3	
2000	25.5	11.7	12.9	-6.2	-5.3	-10.7	0.8	0.2	-3.2	0.5	-1.0	5.3	2.1	0.9	
2001	2.3	-6.7	-5.8	7.1	0.9	2.2	-0.7	-0.1	-5.4	4.4	0.7	9.2	4.9	1.8	
2002	13.2	9.0	9.4	13.1	26.5	-20.7	3.3	6.1	-5.1	8.3	3.4	6.6	5.1	5.7	
2003	13.8	24.8	23.6	-5.7	25.5	5.6	-3.6	6.0	13.1	-2.3	2.7	2.8	2.8	4.8	
2004	20.1	21.5	21.4	-12.7	12.3	3.0	10.3	9.5	9.7	-2.9	1.4	-4.4	-1.7	5.3	
2005	-5.9	2.9	2.0	-4.1	-10.0	-2.0	-4.3	-2.9	-0.6	-8.9	-6.0	2.6	-1.6	-2.4	
2006	17.9	0.3	1.9	-7.8	-8.1	8.4	8.5	2.6	-4.3	-6.2	-5.5	0.2	-2.5	0.8	
2007	15.5	-1.6	0.2	-1.4	-1.7	-2.4	10.1	3.5	-5.3	-2.5	-3.5	2.3	-0.4	2.2	
2008	-9.6	-22.4	-20.8	11.2	11.2	-22.6	1.2	-5.3	2.9	1.1	1.7	3.3	2.6	-2.6	
2009	2.0	-31.3	-26.6	14.5	21.0	-29.8	-25.1	-15.3	-2.7	-12.6	-9.3	-9.7	-9.5	-13.2	
2010	56.5	21.4	28.2	27.3	31.9	10.9	-2.1	16.3	8.6	9.5	9.4	-14.5	-3.1	8.5	
2011	2.5	8.6	7.2	3.4	-7.7	-9.9	1.4	1.0	-8.5	0.3	-2.7	5.2	1.0	1.0	
2012	-16.5	-3.9	-6.8	-11.2	-21.2	6.6	-10.1	-10.6	3.0	-5.8	-3.0	0.5	-1.3	-7.2	
2013	6.1	9.8	9.0	1.7	-9.0	-8.1	0.8	1.4	-3.5	2.9	0.7	3.3	2.0	1.6	
2014	32.6	27.4	28.4	-0.9	0.9	17.8	6.6	11.6	3.6	8.7	7.0	7.5	7.2	9.9	
2015	-16.2	9.8	4.6	19.2	0.7	12.2	2.7	6.4	1.1	2.8	2.3	-3.2	-0.4	3.8	
2016	-5.0	13.0	10.1	-1.2	4.0	-6.5	7.7	5.6	-4.9	5.6	2.4	0.3	1.4	4.1	
2017	16.5	8.1	9.3	12.3	-2.3	1.0	6.2	7.2	-2.7	6.7	4.0	4.1	4.0	6.1	
2018	-2.6	5.6	4.3	3.6	-11.2	10.1	-7.0	-0.5	-4.0	-0.3	-1.3	3.3	0.9	-	
2019	16.1	4.8	6.4	3.1	-1.9	4.8	-1.9	2.6	0.5	0.6	0.6	1.6	1.1	2.1	
2020	-32.5	-18.6	-20.7	-4.8	-7.8	-17.9	-21.7	-16.5	-16.9	-11.1	-12.7	-7.7	-10.2	-14.3	
2021	-0.5	16.4	14.2	27.4	-1.3	1.2	-7.3	9.7	6.2	25.7	20.8	14.4	17.5	12.6	
2022	10.1	10.9	10.8	-0.1	-9.5	43.3	-0.4	5.3	-2.0	12.6	9.4	9.2	9.3	6.8	
2023	4.6	-14.0	-11.9	4.1	11.0	-1.0	6.0	-2.0	7.3	6.4	6.5	10.5	8.5	2.1	

Users of these data should note that there may be instances where the period on period growths for the same component differ between tables. This is due to the growth rates being calculated at a higher precision than 1 dp within the production system. This accuracy is truncated when transferred into the published tables.

3B.Q CONSTRUCTION OUTPUT: VOLUME SEASONALLY ADJUSTED PERCENTAGE CHANGE ON SAME PERIOD A YEAR EARLIER

%

	New Housing				Other New Work				Repair and Maintenance				All Repair and Maintenance	All Work
	Public housing	Private housing	Total new housing	Infra- structure	Excluding Infrastructure			All new work	Housing			Non housing R&M		
					Public	Private industri- al	Private commerci- al		Public housing	Private housing	Total housing			
	MV68	MV69	MVM8	MV6A	MV6B	MV6C	MV6D	MV6E	MV6F	MV6G	MV6H	MV6I	MV6J	MV6K
2009 Q3	6.4	-30.7	-25.2	10.8	23.5	-29.9	-29.8	-16.8	1.6	-4.9	-2.7	-5.5	-4.2	-12.2
Q4	34.0	-15.8	-7.9	40.7	34.9	-15.4	-30.3	-6.0	-0.2	-21.3	-14.4	-7.2	-10.7	-7.8
2010 Q1	68.1	4.5	15.0	53.4	48.6	1.2	-15.4	11.8	15.1	-1.2	4.4	-18.5	-7.6	4.0
Q2	69.6	19.4	28.3	44.9	42.5	12.5	-8.2	17.7	13.2	9.5	11.0	-10.8	-0.4	10.5
Q3	61.1	35.2	40.6	26.4	23.4	32.5	8.0	22.6	2.4	9.3	7.1	-18.9	-6.5	10.6
Q4	34.7	28.0	29.5	-4.7	18.3	-1.0	11.7	13.2	4.6	21.4	15.3	-9.3	2.4	9.0
2011 Q1	20.9	20.2	20.4	-3.2	6.3	-4.2	0.1	5.3	-7.1	8.5	2.9	9.0	5.7	5.4
Q2	9.5	10.6	10.4	1.1	-6.0	-5.4	2.5	2.2	-9.8	1.4	-2.5	0.8	-1.0	1.0
Q3	-8.8	3.9	0.9	2.1	-10.6	-24.1	-2.0	-3.3	-9.9	-7.0	-8.0	6.2	-1.5	-2.6
Q4	-8.5	1.6	-0.8	15.4	-19.7	-2.8	5.2	-	-7.1	-0.6	-2.7	5.3	1.0	0.4
2012 Q1	-15.8	1.0	-3.0	-8.5	-23.4	0.2	-4.0	-8.1	-2.2	-1.7	-1.9	2.6	0.3	-5.1
Q2	-22.1	-4.9	-8.8	-19.8	-21.7	0.4	-6.4	-12.1	1.1	-5.2	-3.2	3.2	-0.1	-7.8
Q3	-15.0	-8.5	-9.9	-8.6	-20.3	10.9	-15.2	-12.2	7.4	-5.0	-1.0	-1.5	-1.3	-8.2
Q4	-12.9	-3.2	-5.3	-7.2	-18.9	15.3	-14.5	-10.0	5.9	-11.1	-5.8	-2.2	-4.0	-7.8
2013 Q1	-8.8	-3.6	-4.7	-	-17.7	6.2	-4.1	-5.2	1.3	-5.3	-3.2	-0.8	-2.0	-4.0
Q2	6.2	8.1	7.8	6.3	-9.6	-9.2	-6.0	-0.6	-3.6	1.9	0.1	0.2	0.1	-0.3
Q3	7.5	15.9	14.2	-1.2	-3.6	-12.0	9.6	5.6	-7.1	6.8	2.0	6.7	4.3	5.1
Q4	21.2	19.6	19.9	2.1	-3.8	-16.0	4.6	6.1	-4.1	8.8	4.2	7.2	5.7	5.9
2014 Q1	32.1	29.8	30.3	0.2	-1.7	-0.3	6.9	10.8	0.8	13.4	9.2	6.1	7.6	9.6
Q2	39.7	28.1	30.4	-2.6	-0.7	28.9	9.3	12.9	4.1	9.1	7.5	11.4	9.4	11.5
Q3	39.9	29.3	31.3	-0.6	-0.5	25.9	2.6	11.4	6.6	7.6	7.3	7.6	7.4	9.9
Q4	20.4	23.0	22.5	-0.5	6.7	19.3	7.7	11.3	2.9	4.8	4.2	5.0	4.6	8.7
2015 Q1	4.3	14.7	12.6	18.1	2.7	17.8	3.9	9.9	3.3	-1.0	0.3	3.8	2.0	6.9
Q2	-11.3	13.3	8.3	24.1	0.7	4.9	2.5	8.0	1.5	3.2	2.7	-5.6	-1.5	4.4
Q3	-28.2	3.7	-2.7	20.6	0.4	13.8	1.6	3.7	0.8	2.8	2.2	-6.7	-2.3	1.4
Q4	-27.6	8.2	1.1	14.5	-0.8	12.9	2.8	4.3	-0.9	6.4	4.0	-3.9	0.1	2.7
2016 Q1	-16.3	13.1	7.6	-2.0	1.4	-6.4	6.3	3.9	-0.9	7.3	4.6	-3.6	0.6	2.7
Q2	-14.1	11.2	6.9	-6.1	7.2	-0.6	7.3	4.2	-3.2	4.3	2.0	2.5	2.2	3.5
Q3	4.7	15.8	14.2	1.1	4.7	-12.8	10.6	7.9	-9.7	4.7	0.2	1.4	0.8	5.3
Q4	11.3	12.0	11.9	2.2	2.8	-5.7	6.8	6.6	-5.6	6.2	2.6	1.1	1.9	4.9
2017 Q1	13.4	8.1	8.9	13.5	6.8	-2.8	10.8	9.5	-7.5	7.1	2.6	4.7	3.6	7.4
Q2	20.3	5.7	7.7	16.7	-3.2	-6.5	8.6	7.5	-3.4	7.4	4.2	3.3	3.8	6.2
Q3	18.0	6.6	8.1	10.6	-7.2	10.0	5.0	6.0	1.7	6.6	5.3	4.8	5.0	5.6
Q4	14.5	12.0	12.4	8.8	-4.9	3.8	0.7	5.9	-1.0	5.7	3.8	3.6	3.7	5.1
2018 Q1	-4.9	6.9	5.1	3.7	-16.7	13.0	-6.0	-0.5	-2.8	-0.4	-1.0	0.3	-0.4	-0.5
Q2	-5.3	4.4	2.9	2.1	-15.2	16.9	-7.4	-1.7	-3.5	1.7	0.3	4.1	2.1	-0.4
Q3	-0.8	8.4	7.0	2.6	-5.1	3.4	-9.7	-0.1	-4.1	0.2	-1.0	6.7	2.7	0.9
Q4	0.4	2.6	2.3	5.8	-7.2	7.9	-4.7	0.3	-5.5	-2.7	-3.4	2.0	-0.8	-0.1
2019 Q1	16.5	6.8	8.1	5.9	2.7	8.6	-6.0	3.2	-2.4	3.5	1.9	6.8	4.3	3.6
Q2	23.4	6.4	8.8	5.7	-0.8	-0.1	-3.3	3.4	-2.6	-1.4	-1.7	2.3	0.2	2.3
Q3	10.2	5.3	6.0	2.8	-3.8	6.2	2.1	3.4	2.1	-0.4	0.3	-2.5	-1.1	1.8
Q4	14.8	1.1	3.0	-2.0	-5.3	4.5	-	0.5	5.1	1.0	2.0	-0.1	1.0	0.7
2020 Q1	3.8	-3.6	-2.5	-2.5	-0.4	5.8	-2.1	-1.8	7.9	-8.0	-3.9	-4.4	-4.2	-2.6
Q2	-63.4	-51.3	-53.2	-16.6	-19.6	-31.2	-39.8	-38.2	-45.2	-42.2	-43.0	-25.5	-34.3	-36.9
Q3	-33.0	-15.0	-17.6	-2.5	-8.0	-24.9	-22.4	-15.4	-19.7	-0.2	-5.4	-2.5	-4.0	-11.5
Q4	-35.1	-5.4	-10.1	2.8	-3.5	-21.3	-22.3	-10.8	-10.8	5.9	1.4	1.9	1.6	-6.5
2021 Q1	-26.3	-2.4	-6.2	8.9	-6.5	-28.1	-20.7	-8.1	-15.6	13.4	5.0	6.4	5.7	-3.4
Q2	86.7	99.7	98.1	49.5	16.8	13.3	26.4	52.5	64.0	86.4	80.8	42.4	59.1	54.9
Q3	7.7	7.2	7.2	33.3	-3.8	11.2	-12.6	7.5	6.5	12.5	11.1	6.6	8.9	8.0
Q4	-19.1	1.9	-0.5	21.3	-8.7	20.4	-11.2	2.1	-3.2	15.9	11.4	8.4	9.9	5.0
2022 Q1	1.2	5.5	5.0	13.2	-12.7	39.6	-8.4	3.7	-3.9	17.1	12.2	9.2	10.7	6.3
Q2	4.9	10.8	10.2	-6.3	-11.5	54.9	-5.5	2.3	0.7	15.0	11.8	6.5	9.1	4.8
Q3	-1.1	16.0	14.0	-9.4	-11.5	50.8	6.7	5.5	-2.9	15.4	11.4	12.1	11.8	7.8
Q4	43.5	11.3	14.2	4.5	-1.9	30.4	7.0	9.6	-1.9	4.1	2.9	9.1	5.9	8.2
2023 Q1	0.8	-3.1	-2.6	1.5	4.2	18.1	9.3	2.5	6.6	5.9	6.0	6.8	6.4	4.0
Q2	3.7	-12.8	-11.0	9.6	16.0	1.0	2.9	-0.4	4.2	6.9	6.4	8.9	7.6	2.7
Q3	13.0	-17.2	-14.1	11.1	16.5	-10.8	7.6	-1.3	7.7	2.7	3.6	12.2	7.8	2.3
Q4	1.6	-22.2	-19.4	-5.1	7.8	-9.2	4.2	-8.4	10.9	10.0	10.2	13.9	12.0	-0.6
2024 Q1	3.1	-12.1	-10.2	-6.4	3.9	-11.7	-3.1	-6.7	4.2	10.8	9.5	8.6	9.0	-0.4
Q2	-6.8	-8.4	-8.2	-10.5	-3.1	-7.2	1.1	-6.4	2.1	6.8	5.9	7.7	6.8	-1.0

Users of these data should note that there may be instances where the period on period growths for the same component differ between tables. This is due to the growth rates being calculated at a higher precision than 1 dp within the production system. This accuracy is truncated when transferred into the published tables.

4A.A CONSTRUCTION OUTPUT: VALUE SEASONALLY ADJUSTED CURRENT PRICES BY SECTOR

£ million

	New Housing			Other New Work				Repair and Maintenance						All Repair and Mainten- ance	All Work	
	Public housing	Private housing	Total new housing	Excluding Infrastructure			All new work	Housing			Other Work					
				Infra- structure	Public	Private industr- ial		Private commerc- ial	Public housing	Private housing	Total housing	Infra- structure	Public			Private
	MVM9	MVN2	MVN3	MVN4	MVN5	MVN6	MVN7	MVN8	MVN9	MVNM	MVO2	N42T	N42U	N42V	MVO4	MVO5
1997	1 028	7 559	8 587	7 953	3 063	4 536	12 631	36 770	5 229	7 460	12 689	-	4 669	6 862	24 220	60 990
1998	881	8 146	9 027	7 703	3 343	4 893	14 747	39 713	5 110	7 890	13 000	-	4 778	7 334	25 112	64 825
1999	824	8 079	8 903	7 610	3 907	5 030	17 713	43 163	5 059	7 990	13 049	-	4 882	7 487	25 418	68 581
2000	1 075	9 475	10 550	7 941	3 863	4 717	18 608	45 679	5 104	8 358	13 462	-	5 158	8 412	27 032	72 711
2001	1 174	9 639	10 813	8 814	4 253	4 709	19 988	48 577	5 164	8 870	14 034	-	5 541	9 808	29 383	77 960
2002	1 411	11 453	12 864	10 033	5 517	4 323	22 220	54 957	4 974	10 255	15 229	-	6 065	10 969	32 263	87 220
2003	1 706	15 017	16 723	9 333	7 280	4 765	22 893	60 994	5 781	11 146	16 927	-	7 168	12 169	36 264	97 258
2004	2 210	18 977	21 187	8 243	8 638	5 210	25 509	68 787	6 414	11 951	18 365	-	7 215	12 291	37 871	106 658
2005	2 251	20 715	22 966	8 241	8 362	5 610	26 325	71 504	6 642	12 276	18 918	-	8 044	13 027	39 989	111 493
2006	2 853	21 765	24 618	8 178	8 047	6 308	30 121	77 272	6 819	12 568	19 387	-	7 868	13 794	41 049	118 321
2007	3 480	22 146	25 626	8 642	8 347	6 438	34 404	83 457	6 885	13 476	20 361	-	7 439	15 807	43 607	127 064
2008	3 299	18 138	21 437	9 715	9 988	5 339	35 190	81 669	7 467	14 708	22 175	-	8 635	16 165	46 975	128 644
2009	3 327	12 592	15 919	10 738	11 857	3 515	25 558	67 587	7 417	13 283	20 700	-	8 631	14 165	43 496	111 083
2010	4 893	14 839	19 732	13 540	14 372	3 551	23 710	74 905	7 871	14 405	22 276	6 841	5 074	8 290	42 480	117 385
2011	4 938	16 334	21 271	14 618	13 291	3 349	24 031	76 560	7 195	15 086	22 281	7 508	5 004	8 897	43 691	120 251
2012	4 049	16 066	20 116	13 675	10 826	3 688	22 332	70 637	7 675	14 921	22 596	7 607	4 951	9 173	44 327	114 964
2013	4 323	18 088	22 410	14 463	10 265	3 489	23 502	74 129	7 625	16 046	23 671	7 817	5 352	9 673	46 513	120 642
2014	5 809	23 717	29 525	14 792	10 564	4 186	25 868	84 935	7 925	17 661	25 585	8 511	5 539	10 632	50 267	135 202
2015	4 908	26 261	31 169	17 771	10 755	4 728	26 846	91 269	8 014	18 162	26 176	8 140	4 875	10 985	50 176	141 446
2016	4 806	30 573	35 379	17 765	11 508	4 588	29 751	98 991	7 712	19 408	27 120	7 871	4 909	11 659	51 559	150 550
2017	5 826	34 406	40 233	20 107	11 521	4 826	32 370	109 056	7 649	21 095	28 744	8 475	5 028	12 508	54 754	163 810
2018	5 886	37 669	43 555	21 524	10 572	5 521	31 114	112 287	7 462	21 364	28 826	8 971	4 882	13 437	56 116	168 402
2019	7 038	40 668	47 706	23 262	10 728	5 962	31 572	119 230	7 597	21 774	29 371	9 299	5 263	13 652	57 585	176 815
2020	4 781	33 319	38 101	22 504	9 952	4 901	24 871	100 328	6 363	19 515	25 878	9 524	4 902	11 799	52 103	152 431
2021	5 027	41 031	46 057	29 709	10 111	5 201	23 750	114 828	6 943	25 239	32 182	11 178	5 611	14 165	63 136	177 964
2022	6 148	50 479	56 627	33 047	9 911	8 170	25 646	133 400	7 148	29 844	36 992	12 056	6 401	17 758	73 207	206 608
2023	6 880	46 420	53 300	36 624	11 664	8 481	28 789	138 858	7 898	32 655	40 553	13 632	7 401	20 437	82 022	220 880

Users of these data should note that there may be instances where the period on period growths for the same component differ between tables. This is due to the growth rates being calculated at a higher precision than 1 dp within the production system. This accuracy is truncated when transferred into the published tables.

4A.Q CONSTRUCTION OUTPUT: VALUE SEASONALLY ADJUSTED CURRENT PRICES BY SECTOR

£ million

	New Housing				Other New Work				Repair and Maintenance								All Repair and Maintenance	All Work
				Infra- structure	Excluding Infrastructure			All new work	Housing				Other Work					
	Public housing	Private housing	Total new housing		Public	Private industrial	Private commercial		Public housing	Private housing	Total housing	Infra- structure	Public	Private				
	MVM9	MVN2	MVN3	MVN4	MVN5	MVN6	MVN7	MVN8	MVN9	MVNM	MVO2	N42T	N42U	N42V	MVO4	MVO5		
2009 Q3	866	2 986	3 852	2 697	3 094	826	6 013	16 482	1 928	3 509	5 437	–	2 378	3 611	11 425	27 907		
Q4	992	3 140	4 132	3 158	3 300	847	5 448	16 884	1 890	3 098	4 988	–	2 136	3 400	10 524	27 408		
2010 Q1	1 141	3 442	4 583	3 473	3 535	848	5 806	18 245	1 954	3 286	5 240	1 604	1 283	2 004	10 131	28 376		
Q2	1 183	3 584	4 767	3 606	3 662	866	5 882	18 782	2 020	3 571	5 591	1 801	1 305	2 023	10 719	29 501		
Q3	1 304	3 921	5 225	3 402	3 526	1 012	6 177	19 341	1 969	3 797	5 766	1 713	1 238	2 080	10 797	30 138		
Q4	1 265	3 892	5 157	3 059	3 650	824	5 846	18 536	1 928	3 750	5 679	1 723	1 249	2 183	10 834	29 370		
2011 Q1	1 338	4 067	5 405	3 559	3 690	827	5 744	19 226	1 829	3 736	5 565	1 861	1 252	2 233	10 910	30 136		
Q2	1 270	4 072	5 342	3 818	3 405	863	6 024	19 452	1 810	3 751	5 561	1 821	1 231	2 190	10 802	30 255		
Q3	1 180	4 144	5 324	3 584	3 168	809	6 060	18 944	1 755	3 682	5 437	1 924	1 258	2 226	10 844	29 788		
Q4	1 150	4 051	5 200	3 657	3 027	850	6 203	18 937	1 801	3 918	5 719	1 902	1 264	2 249	11 134	30 072		
2012 Q1	1 109	4 252	5 361	3 410	2 906	875	5 639	18 190	1 832	3 844	5 676	1 892	1 283	2 321	11 173	29 363		
Q2	981	3 956	4 937	3 236	2 763	911	5 818	17 666	1 906	3 717	5 622	1 988	1 210	2 292	11 112	28 777		
Q3	983	3 893	4 876	3 459	2 617	919	5 362	17 234	1 965	3 694	5 659	1 853	1 222	2 308	11 042	28 275		
Q4	976	3 965	4 941	3 570	2 541	982	5 512	17 547	1 973	3 666	5 639	1 874	1 236	2 252	11 001	28 548		
2013 Q1	1 003	4 163	5 166	3 550	2 483	938	5 612	17 748	1 906	3 806	5 712	1 890	1 302	2 266	11 170	28 918		
Q2	1 040	4 356	5 396	3 564	2 602	848	5 690	18 099	1 902	3 967	5 869	1 838	1 347	2 453	11 508	29 607		
Q3	1 070	4 628	5 698	3 548	2 629	847	6 102	18 823	1 880	4 110	5 990	2 034	1 361	2 486	11 871	30 694		
Q4	1 210	4 941	6 151	3 802	2 552	856	6 099	19 459	1 937	4 163	6 100	2 054	1 341	2 468	11 964	31 423		
2014 Q1	1 365	5 525	6 890	3 721	2 542	982	6 347	20 481	1 961	4 434	6 395	2 082	1 348	2 531	12 357	32 839		
Q2	1 471	5 851	7 322	3 592	2 639	1 099	6 440	21 092	1 974	4 419	6 393	2 087	1 444	2 721	12 646	33 738		
Q3	1 512	6 176	7 688	3 637	2 651	1 083	6 448	21 507	2 007	4 466	6 473	2 167	1 438	2 720	12 798	34 304		
Q4	1 461	6 165	7 626	3 842	2 732	1 022	6 633	21 855	1 983	4 342	6 324	2 174	1 309	2 659	12 466	34 321		
2015 Q1	1 423	6 324	7 747	4 393	2 615	1 159	6 603	22 517	2 022	4 373	6 395	2 261	1 240	2 676	12 572	35 089		
Q2	1 326	6 747	8 073	4 487	2 691	1 156	6 676	23 084	1 997	4 549	6 546	2 004	1 156	2 706	12 411	35 495		
Q3	1 094	6 472	7 566	4 436	2 696	1 248	6 639	22 585	2 023	4 594	6 617	1 984	1 197	2 754	12 552	35 137		
Q4	1 065	6 718	7 783	4 455	2 754	1 165	6 928	23 084	1 972	4 644	6 617	1 892	1 283	2 849	12 641	35 725		
2016 Q1	1 218	7 314	8 532	4 373	2 718	1 096	7 198	23 917	2 019	4 732	6 751	1 826	1 238	2 865	12 679	36 597		
Q2	1 164	7 676	8 840	4 299	2 964	1 189	7 354	24 646	1 952	4 791	6 743	2 047	1 248	2 870	12 908	37 555		
Q3	1 183	7 730	8 913	4 493	2 901	1 131	7 551	24 988	1 849	4 874	6 723	1 982	1 222	2 924	12 851	37 839		
Q4	1 241	7 853	9 093	4 600	2 925	1 173	7 648	25 439	1 891	5 012	6 903	2 015	1 201	3 000	13 120	38 559		
2017 Q1	1 437	8 133	9 569	4 926	2 969	1 114	8 160	26 738	1 900	5 163	7 063	2 074	1 256	3 106	13 500	40 238		
Q2	1 450	8 460	9 911	4 994	2 931	1 161	8 162	27 158	1 928	5 253	7 181	2 085	1 280	3 076	13 622	40 780		
Q3	1 457	8 632	10 088	5 093	2 767	1 289	8 151	27 389	1 917	5 298	7 214	2 150	1 298	3 117	13 780	41 168		
Q4	1 483	9 182	10 665	5 094	2 854	1 261	7 897	27 772	1 904	5 381	7 284	2 166	1 193	3 209	13 852	41 624		
2018 Q1	1 414	8 997	10 411	5 248	2 559	1 299	7 941	27 458	1 851	5 221	7 072	2 141	1 099	3 247	13 559	41 018		
Q2	1 443	9 320	10 763	5 262	2 584	1 420	7 858	27 887	1 905	5 426	7 331	2 302	1 163	3 360	14 156	42 043		
Q3	1 486	9 633	11 120	5 399	2 697	1 382	7 557	28 155	1 876	5 396	7 272	2 296	1 363	3 472	14 403	42 558		
Q4	1 543	9 719	11 261	5 616	2 732	1 420	7 757	28 786	1 830	5 320	7 150	2 232	1 257	3 358	13 997	42 783		
2019 Q1	1 677	9 824	11 501	5 746	2 711	1 485	7 690	29 132	1 854	5 468	7 323	2 399	1 270	3 372	14 364	43 496		
Q2	1 841	10 171	12 013	5 903	2 653	1 465	7 878	29 912	1 872	5 428	7 300	2 312	1 314	3 436	14 361	44 273		
Q3	1 692	10 649	12 341	5 948	2 704	1 517	8 036	30 547	1 936	5 456	7 391	2 313	1 345	3 477	14 527	45 073		
Q4	1 828	10 023	11 852	5 665	2 660	1 496	7 967	29 640	1 936	5 421	7 357	2 275	1 334	3 368	14 334	43 973		
2020 Q1	1 750	9 738	11 488	5 746	2 739	1 579	7 643	29 196	2 018	5 085	7 103	2 257	1 334	3 176	13 871	43 067		
Q2	690	4 959	5 649	4 980	2 136	1 001	4 751	18 517	1 050	3 161	4 211	2 013	1 012	2 294	9 529	28 047		
Q3	1 135	9 063	10 198	5 789	2 491	1 131	6 241	25 850	1 556	5 487	7 044	2 633	1 208	3 135	14 020	39 870		
Q4	1 207	9 559	10 766	5 988	2 585	1 190	6 236	26 766	1 738	5 782	7 520	2 620	1 348	3 194	14 683	41 448		
2021 Q1	1 303	9 662	10 966	6 464	2 596	1 154	6 140	27 320	1 721	5 814	7 536	2 636	1 407	3 350	14 928	42 248		
Q2	1 328	10 358	11 686	7 620	2 561	1 177	6 165	29 210	1 724	6 002	7 726	2 767	1 390	3 500	15 383	44 593		
Q3	1 324	10 390	11 714	8 049	2 487	1 339	5 655	29 244	1 727	6 396	8 123	2 845	1 387	3 511	15 867	45 111		
Q4	1 072	10 620	11 692	7 576	2 466	1 530	5 790	29 054	1 771	7 026	8 797	2 930	1 428	3 803	16 958	46 012		
2022 Q1	1 503	11 291	12 794	7 608	2 438	1 747	5 997	30 584	1 741	7 155	8 896	2 844	1 545	4 181	17 466	48 050		
Q2	1 563	12 851	14 414	8 053	2 458	2 034	6 330	32 289	1 839	7 319	9 158	2 987	1 604	4 297	18 047	51 336		
Q3	1 412	13 223	14 635	8 319	2 381	2 205	6 553	34 093	1 757	7 729	9 486	3 112	1 556	4 580	18 734	52 828		
Q4	1 670	13 113	14 783	9 067	2 634	2 184	6 766	35 433	1 812	7 641	9 452	3 113	1 696	4 700	18 960	54 394		
2023 Q1	1 667	12 058	13 725	8 884	2 763	2 249	7 138	34 758	1 937	7 908	9 845	3 055	1 818	4 928	19 646	54 404		
Q2	1 751	12 120	13 871	9 445	3 039	2 149	6 931	35 434	1 973	8 052	10 025	3 244	1 774	5 046	20 089	55 523		
Q3	1 725	11 639	13 364	9 564	2 928	2 043	7 431	35 330	1 942	8 124	10 066	3 478	1 865	5 296	20 704	56 034		
Q4	1 738	10 603	12 341	8 731	2 935	2 041	7 289	33 336	2 047	8 570	10 617	3 855	1 944	5 167	21 583	54 919		
2024 Q1	1 749	10 743	12 492	8 079	2 914	2 026	7 006	32 517	2 036	8 915	10 950	3 804	1 590	4 905	21 249	53 766		
Q2	1 663	10 931	12 594	8 118	3 031	2 055	7 095	32 895	2 004	8 681	10 684	3 988	1 694	5 136	21 503	54 398		

Users of these data should note that there may be instances where the period on period growths for the same component differ between tables. This is due to the growth rates being calculated at a higher precision than 1 dp within the production system. This accuracy is truncated when transferred into the published tables.

4A.M CONSTRUCTION OUTPUT: VALUE SEASONALLY ADJUSTED

CURRENT PRICES BY SECTOR

£ million

	New Housing				Other New Work			Repair and Maintenance								
	Public housing	Private housing	Total new housing	Infra-structure	Excluding Infrastructure			Housing				Other Work		All Maintenance	All Work	
					Public	Private industrial	Private commercial	All new work	Public housing	Private housing	Total housing	Infra-structure	Public			Private
	MVM9	MVN2	MVN3	MVN4	MVN5	MVN6	MVN7	MVN8	MVN9	MVNM	MVO2	N42T	N42U	N42V	MVO4	MVO5
2018 Jun	498	3 163	3 661	1 801	873	493	2 588	9 416	656	1 815	2 471	755	419	1 135	4 781	14 196
Jul	495	3 219	3 714	1 773	900	489	2 539	9 415	624	1 827	2 451	758	424	1 138	4 770	14 185
Aug	482	3 190	3 673	1 776	899	449	2 516	9 312	631	1 799	2 430	767	451	1 167	4 815	14 127
Sep	509	3 223	3 732	1 849	899	445	2 503	9 428	620	1 771	2 392	771	488	1 167	4 818	14 246
Oct	482	3 303	3 784	1 912	964	466	2 548	9 675	616	1 767	2 383	769	449	1 140	4 741	14 416
Nov	491	3 326	3 817	1 894	883	455	2 630	9 678	605	1 811	2 416	739	425	1 138	4 718	14 396
Dec	570	3 090	3 660	1 811	885	499	2 579	9 434	609	1 742	2 351	724	383	1 079	4 538	13 971
2019 Jan	553	3 148	3 701	1 830	879	518	2 488	9 416	603	1 816	2 419	789	425	1 138	4 770	14 186
Feb	556	3 336	3 893	1 934	914	485	2 565	9 790	641	1 832	2 473	806	421	1 121	4 821	14 611
Mar	568	3 339	3 907	1 981	918	482	2 637	9 926	610	1 821	2 431	804	424	1 113	4 773	14 698
Apr	582	3 349	3 931	1 925	884	482	2 657	9 878	613	1 794	2 406	791	450	1 136	4 783	14 661
May	595	3 397	3 993	2 025	877	498	2 598	9 991	629	1 811	2 440	791	420	1 142	4 792	14 783
Jun	664	3 426	4 089	1 953	892	485	2 624	10 043	630	1 823	2 453	731	444	1 158	4 786	14 829
Jul	549	3 629	4 179	1 956	893	484	2 653	10 165	650	1 813	2 464	766	446	1 192	4 867	15 032
Aug	558	3 537	4 095	1 925	907	519	2 717	10 164	639	1 826	2 466	792	434	1 187	4 878	15 042
Sep	585	3 482	4 067	2 067	904	514	2 666	10 218	646	1 816	2 462	756	466	1 098	4 781	14 999
Oct	594	3 391	3 985	1 946	870	494	2 655	9 951	640	1 806	2 446	762	445	1 133	4 786	14 737
Nov	612	3 382	3 993	1 821	898	504	2 629	9 844	648	1 826	2 475	770	448	1 108	4 800	14 644
Dec	622	3 251	3 874	1 898	892	498	2 683	9 845	647	1 789	2 436	743	442	1 127	4 747	14 592
2020 Jan	606	3 313	3 920	1 944	918	522	2 632	9 936	655	1 717	2 372	751	411	1 063	4 597	14 532
Feb	600	3 261	3 861	1 908	941	525	2 618	9 852	668	1 705	2 373	757	453	1 068	4 652	14 504
Mar	544	3 164	3 707	1 894	881	532	2 393	9 408	696	1 662	2 358	749	470	1 045	4 623	14 031
Apr	209	1 317	1 526	1 436	669	299	1 422	5 351	343	867	1 210	612	302	644	2 768	8 119
May	219	1 574	1 793	1 808	698	323	1 487	6 109	323	892	1 215	642	331	730	2 918	9 027
Jun	261	2 068	2 330	1 736	770	379	1 843	7 057	385	1 401	1 786	759	379	919	3 843	10 900
Jul	384	2 824	3 209	1 931	810	369	2 054	8 372	465	1 729	2 194	870	403	1 038	4 504	12 876
Aug	380	3 040	3 421	1 942	866	378	2 022	8 629	523	1 836	2 359	848	397	1 039	4 643	13 272
Sep	370	3 199	3 568	1 916	815	384	2 165	8 849	569	1 922	2 491	915	408	1 058	4 873	13 721
Oct	401	3 217	3 619	1 906	883	403	2 122	8 932	573	1 978	2 552	886	448	1 061	4 947	13 879
Nov	421	3 185	3 606	2 009	851	404	2 125	8 996	589	1 887	2 476	892	450	1 057	4 874	13 870
Dec	385	3 157	3 542	2 073	850	383	1 989	8 838	577	1 916	2 493	842	450	1 077	4 862	13 699
2021 Jan	410	2 979	3 389	2 071	856	363	1 981	8 660	585	1 829	2 415	839	442	1 076	4 772	13 432
Feb	457	3 161	3 618	2 115	868	383	2 090	9 075	571	1 923	2 494	867	458	1 122	4 942	14 016
Mar	436	3 522	3 958	2 278	872	408	2 069	9 585	565	2 062	2 627	931	506	1 151	5 215	14 800
Apr	472	3 398	3 870	2 434	880	399	2 121	9 704	576	1 992	2 568	954	445	1 160	5 126	14 830
May	432	3 466	3 898	2 574	816	373	2 019	9 680	582	1 991	2 573	895	506	1 169	5 144	14 825
Jun	424	3 495	3 919	2 612	865	405	2 025	9 826	566	2 019	2 585	918	438	1 171	5 112	14 938
Jul	435	3 425	3 859	2 721	845	432	1 945	9 801	578	2 010	2 588	969	451	1 132	5 140	14 942
Aug	460	3 443	3 903	2 695	821	446	1 861	9 727	572	2 141	2 713	943	441	1 188	5 284	15 011
Sep	429	3 523	3 951	2 634	821	461	1 849	9 716	577	2 245	2 822	934	495	1 191	5 442	15 158
Oct	439	3 420	3 859	2 610	854	488	1 940	9 750	590	2 279	2 869	950	455	1 229	5 504	15 254
Nov	323	3 584	3 907	2 576	818	504	1 947	9 752	600	2 333	2 933	927	493	1 284	5 637	15 389
Dec	310	3 616	3 926	2 390	795	538	1 904	9 552	581	2 414	2 995	1 052	480	1 290	5 817	15 369
2022 Jan	467	3 651	4 118	2 484	793	573	1 991	9 958	558	2 383	2 941	963	486	1 341	5 730	15 688
Feb	501	3 746	4 247	2 481	825	552	1 982	10 086	583	2 350	2 933	952	492	1 370	5 747	15 833
Mar	536	3 894	4 430	2 643	820	622	2 025	10 540	600	2 422	3 022	929	567	1 471	5 988	16 529
Apr	535	4 103	4 638	2 757	820	650	2 030	10 894	601	2 334	2 936	935	494	1 421	5 786	16 681
May	493	4 400	4 894	2 652	842	679	2 191	11 258	615	2 492	3 107	1 040	560	1 470	6 178	17 436
Jun	534	4 348	4 882	2 644	796	705	2 109	11 137	623	2 493	3 116	1 012	550	1 406	6 083	17 219
Jul	491	4 417	4 908	2 688	781	742	2 185	11 305	598	2 606	3 205	1 042	520	1 488	6 254	17 559
Aug	481	4 423	4 904	2 778	794	744	2 170	11 390	553	2 586	3 139	1 034	534	1 529	6 237	17 627
Sep	441	4 383	4 824	2 852	806	719	2 198	11 398	605	2 537	3 142	1 037	502	1 562	6 243	17 642
Oct	517	4 607	5 124	2 892	831	695	2 225	11 766	616	2 548	3 164	1 039	569	1 550	6 322	18 088
Nov	557	4 324	4 881	3 098	888	750	2 190	11 807	578	2 589	3 168	1 019	553	1 584	6 323	18 130
Dec	596	4 182	4 778	3 077	915	740	2 351	11 860	618	2 503	3 121	1 055	574	1 566	6 315	18 176
2023 Jan	543	3 932	4 475	2 894	870	740	2 363	11 341	634	2 466	3 101	1 019	590	1 584	6 294	17 635
Feb	545	3 980	4 525	2 892	911	763	2 392	11 483	662	2 697	3 358	1 035	593	1 653	6 640	18 123
Mar	579	4 145	4 724	3 098	983	746	2 383	11 934	641	2 745	3 386	1 001	635	1 691	6 712	18 646
Apr	576	3 972	4 548	3 108	992	732	2 325	11 705	655	2 654	3 309	1 016	616	1 660	6 601	18 306
May	564	4 002	4 566	3 105	1 005	719	2 248	11 643	657	2 684	3 341	1 083	584	1 645	6 653	18 296
Jun	611	4 146	4 756	3 233	1 041	698	2 358	12 086	661	2 714	3 375	1 144	574	1 740	6 834	18 920
Jul	562	3 949	4 511	3 238	1 002	704	2 509	11 965	640	2 678	3 319	1 125	610	1 762	6 816	18 781
Aug	594	3 886	4 480	3 191	998	665	2 436	11 770	666	2 691	3 357	1 106	613	1 784	6 860	18 630
Sep	569	3 804	4 373	3 134	928	674	2 486	11 596	635	2 755	3 390	1 246	643	1 749	7 028	18 624
Oct	555	3 652	4 207	3 065	1 009	660	2 455	11 397	660	2 820	3 480	1 242	668	1 751	7 140	18 537
Nov	572	3 502	4 074	2 973	960	671	2 403	11 082	690	2 879	3 569	1 30				

4A CONSTRUCTION OUTPUT: VALUE NON-SEASONALLY ADJUSTED CURRENT PRICES BY SECTOR

£ million

	New Housing			Other New Work				Repair and Maintenance				Other Work		All Repair and Maintenance	All Work	
	Public housing	Private housing	Total new housing	Infra-structure	Excluding Infrastructure			All new work	Housing			Public	Private			
					Public	Private industrial	Private commercial		Public housing	Private housing	Total housing					Infra-structure
	MV6L	MV6M	MV6N	MV6O	MV6P	MV6Q	MV6R	MV6S	MV6T	MV6V	MV6W	MV6X	MV6Y	MV6Z	MV72	
1997	1 028	7 559	8 587	7 953	3 063	4 536	12 631	36 770	5 229	7 460	12 689	-	4 669	6 862	24 220	60 990
1998	881	8 146	9 027	7 703	3 343	4 893	14 747	39 713	5 110	7 890	13 000	-	4 778	7 334	25 112	64 825
1999	824	8 079	8 903	7 610	3 907	5 030	17 713	43 163	5 059	7 990	13 049	-	4 882	7 487	25 418	68 581
2000	1 075	9 475	10 550	7 941	3 863	4 717	18 608	45 679	5 104	8 358	13 462	-	5 158	8 412	27 032	72 711
2001	1 174	9 639	10 813	8 814	4 253	4 709	19 988	48 577	5 164	8 870	14 034	-	5 541	9 808	29 383	77 960
2002	1 411	11 453	12 864	10 033	5 517	4 323	22 220	54 957	4 974	10 255	15 229	-	6 065	10 969	32 263	87 220
2003	1 706	15 017	16 723	9 333	7 280	4 765	22 893	60 994	5 781	11 146	16 927	-	7 168	12 169	36 264	97 258
2004	2 210	18 977	21 187	8 243	8 638	5 210	25 509	68 787	6 414	11 951	18 365	-	7 215	12 291	37 871	106 658
2005	2 251	20 715	22 966	8 241	8 362	5 610	26 325	71 504	6 642	12 276	18 918	-	8 044	13 027	39 989	111 493
2006	2 853	21 765	24 618	8 178	8 047	6 308	30 121	77 272	6 819	12 568	19 387	-	7 868	13 794	41 049	118 321
2007	3 480	22 146	25 626	8 642	8 347	6 438	34 404	83 457	6 885	13 476	20 361	-	7 439	15 807	43 607	127 064
2008	3 299	18 138	21 437	9 715	9 988	5 339	35 190	81 669	7 467	14 708	22 175	-	8 635	16 165	46 975	128 644
2009	3 327	12 592	15 919	10 738	11 857	3 515	25 558	67 587	7 417	13 283	20 700	-	8 631	14 165	43 496	111 083
2010	4 893	14 839	19 732	13 540	14 372	3 551	23 710	74 905	7 871	14 405	22 276	6 841	5 074	8 290	42 480	117 385
2011	4 938	16 334	21 271	14 618	13 291	3 349	24 031	76 560	7 195	15 086	22 281	7 508	5 004	8 897	43 691	120 251
2012	4 049	16 066	20 116	13 675	10 826	3 688	22 332	70 637	7 675	14 921	22 596	7 607	4 951	9 173	44 327	114 964
2013	4 323	18 088	22 410	14 463	10 265	3 489	23 502	74 129	7 625	16 046	23 671	7 817	5 352	9 673	46 513	120 642
2014	5 809	23 717	29 525	14 792	10 564	4 186	25 868	84 935	7 925	17 661	25 585	8 511	5 539	10 632	50 267	135 202
2015	4 908	26 261	31 169	17 771	10 755	4 728	26 846	91 269	8 014	18 162	26 176	8 140	4 875	10 985	50 176	141 446
2016	4 806	30 573	35 379	17 765	11 508	4 588	29 751	98 991	7 712	19 408	27 120	7 871	4 909	11 659	51 559	150 550
2017	5 826	34 406	40 233	20 107	11 521	4 826	32 370	109 056	7 649	21 095	28 744	8 475	5 028	12 508	54 754	163 810
2018	5 886	37 669	43 555	21 524	10 572	5 521	31 114	112 287	7 462	21 364	28 826	8 971	4 882	13 437	56 116	168 402
2019	7 038	40 668	47 706	23 262	10 728	5 962	31 572	119 230	7 597	21 774	29 371	9 299	5 263	13 652	57 585	176 815
2020	4 781	33 319	38 101	22 504	9 952	4 901	24 871	100 328	6 363	19 515	25 878	9 524	4 902	11 799	52 103	152 431
2021	5 027	41 031	46 057	29 709	10 111	5 201	23 750	114 828	6 943	25 239	32 182	11 178	5 611	14 165	63 136	177 964
2022	6 148	50 479	56 627	33 047	9 911	8 170	25 646	133 400	7 148	29 844	36 992	12 056	6 401	17 758	73 207	206 608
2023	6 880	46 420	53 300	36 624	11 664	8 481	28 789	138 858	7 898	32 655	40 553	13 632	7 401	20 437	82 022	220 880

Users of these data should note that there may be instances where the period on period growths for the same component differ between tables. This is due to the growth rates being calculated at a higher precision than 1 dp within the production system. This accuracy is truncated when transferred into the published tables.

4Q CONSTRUCTION OUTPUT: VALUE NON-SEASONALLY ADJUSTED

CURRENT PRICES BY SECTOR

£ million

	New Housing			Other New Work				Repair and Maintenance				Other Work		All Repair and Maintenance	All Work	
	Public housing	Private housing	Total new housing	Infra-structure	Excluding Infrastructure			All new work	Housing				Public			Private
					Public	Private industrial	Private commercial		Public housing	Private housing	Total housing	Infra-structure				
					MV6L	MV6M	MV6N		MV6O	MV6P	MV6Q	MV6R				
2009 Q2	763	3 175	3 938	2 590	2 802	848	6 742	16 920	1 802	3 282	5 084	-	1 938	3 450	10 472	27 392
Q3	874	3 031	3 905	2 741	3 087	818	6 229	16 780	1 983	3 501	5 484	-	2 497	3 694	11 675	28 455
Q4	956	3 098	4 054	3 084	3 347	878	5 392	16 755	1 819	3 205	5 024	-	2 143	3 467	10 634	27 389
2010 Q1	1 072	3 029	4 101	3 315	3 303	823	5 443	16 985	2 038	3 011	5 049	1 607	1 238	1 943	9 837	26 822
Q2	1 230	3 815	5 045	3 647	3 600	882	5 817	18 991	1 941	3 524	5 464	1 791	1 200	1 992	10 448	29 439
Q3	1 311	3 996	5 307	3 448	3 786	1 025	6 453	20 019	1 963	3 887	5 850	1 764	1 409	2 174	11 197	31 216
Q4	1 279	3 999	5 279	3 130	3 683	821	5 997	18 910	1 930	3 983	5 912	1 679	1 227	2 180	10 999	29 908
2011 Q1	1 252	3 672	4 924	3 365	3 407	794	5 429	17 919	1 922	3 446	5 368	1 831	1 208	2 184	10 591	28 510
Q2	1 301	4 242	5 543	3 840	3 336	868	5 922	19 509	1 727	3 679	5 405	1 814	1 131	2 143	10 494	30 002
Q3	1 212	4 250	5 461	3 691	3 462	828	6 373	19 816	1 755	3 829	5 584	1 984	1 438	2 307	11 313	31 129
Q4	1 173	4 170	5 343	3 722	3 086	859	6 306	19 316	1 792	4 132	5 924	1 879	1 228	2 262	11 293	30 609
2012 Q1	1 021	3 870	4 891	3 231	2 720	855	5 412	17 108	1 949	3 615	5 564	1 909	1 258	2 298	11 029	28 137
Q2	1 013	4 131	5 145	3 247	2 689	911	5 710	17 702	1 817	3 634	5 451	1 980	1 108	2 237	10 776	28 478
Q3	1 013	3 937	4 951	3 545	2 828	934	5 580	17 838	1 948	3 786	5 734	1 868	1 385	2 359	11 346	29 183
Q4	1 002	4 127	5 129	3 652	2 590	988	5 629	17 989	1 961	3 886	5 847	1 850	1 201	2 279	11 177	29 165
2013 Q1	898	3 683	4 581	3 368	2 288	886	5 272	16 395	1 997	3 450	5 447	1 864	1 246	2 175	10 731	27 126
Q2	1 083	4 577	5 661	3 562	2 531	867	5 616	18 237	1 825	3 961	5 786	1 842	1 246	2 423	11 297	29 534
Q3	1 101	4 706	5 808	3 655	2 859	874	6 371	19 567	1 881	4 249	6 130	2 061	1 541	2 565	12 298	31 865
Q4	1 240	5 121	6 361	3 878	2 587	862	6 242	19 930	1 922	4 387	6 308	2 050	1 318	2 510	12 187	32 117
2014 Q1	1 270	5 096	6 366	3 546	2 342	945	6 026	19 225	2 055	4 144	6 200	2 078	1 287	2 455	12 019	31 244
Q2	1 500	6 000	7 501	3 583	2 569	1 098	6 329	21 080	1 906	4 363	6 269	2 070	1 321	2 669	12 329	33 409
Q3	1 543	6 253	7 796	3 746	2 895	1 119	6 738	22 294	2 007	4 603	6 609	2 181	1 646	2 801	13 236	35 530
Q4	1 495	6 368	7 863	3 916	2 759	1 023	6 775	22 337	1 957	4 551	6 507	2 182	1 286	2 707	12 683	35 019
2015 Q1	1 314	5 844	7 159	4 228	2 420	1 106	6 273	21 186	2 118	4 050	6 168	2 257	1 184	2 584	12 192	33 379
Q2	1 364	6 921	8 285	4 468	2 625	1 156	6 584	23 119	1 938	4 543	6 481	2 001	1 061	2 662	12 206	35 324
Q3	1 125	6 548	7 673	4 548	2 952	1 298	6 921	23 392	2 021	4 734	6 755	1 989	1 384	2 842	12 970	36 362
Q4	1 105	6 948	8 053	4 527	2 758	1 167	7 068	23 573	1 937	4 834	6 771	1 894	1 246	2 898	12 800	36 382
2016 Q1	1 095	6 799	7 893	4 229	2 548	1 032	6 858	22 560	2 137	4 437	6 574	1 831	1 180	2 791	12 377	34 937
Q2	1 210	7 883	9 094	4 277	2 880	1 212	7 298	24 761	1 895	4 810	6 705	2 043	1 154	2 822	12 723	37 483
Q3	1 213	7 816	9 029	4 611	3 182	1 177	7 851	25 850	1 839	5 002	6 842	1 984	1 416	3 013	13 254	39 105
Q4	1 287	8 075	9 362	4 648	2 899	1 167	7 744	25 820	1 840	5 159	6 999	2 013	1 160	3 033	13 205	39 025
2017 Q1	1 322	7 699	9 021	4 812	2 791	1 054	7 779	25 456	2 005	4 894	6 899	2 090	1 208	3 035	13 232	38 688
Q2	1 483	8 601	10 084	4 970	2 863	1 169	8 106	27 192	1 883	5 243	7 126	2 072	1 176	3 013	13 387	40 579
Q3	1 487	8 680	10 167	5 190	3 052	1 340	8 452	28 202	1 902	5 426	7 328	2 147	1 490	3 211	14 176	42 377
Q4	1 535	9 426	10 961	5 136	2 815	1 263	8 033	28 207	1 859	5 532	7 390	2 166	1 154	3 250	13 959	42 166
2018 Q1	1 284	8 490	9 774	5 104	2 410	1 216	7 512	26 017	1 954	4 882	6 836	2 139	1 037	3 171	13 183	39 199
Q2	1 490	9 499	10 989	5 247	2 520	1 462	7 876	28 094	1 845	5 486	7 332	2 298	1 068	3 302	13 999	42 093
Q3	1 515	9 641	11 156	5 505	2 954	1 436	7 823	28 874	1 867	5 516	7 383	2 289	1 565	3 548	14 785	43 659
Q4	1 598	10 039	11 636	5 669	2 687	1 407	7 902	29 302	1 796	5 480	7 276	2 246	1 212	3 416	14 150	43 452
2019 Q1	1 556	9 352	10 909	5 615	2 565	1 386	7 252	27 727	1 908	5 198	7 106	2 410	1 217	3 324	14 056	41 783
Q2	1 864	10 314	12 178	5 813	2 586	1 470	7 878	29 924	1 820	5 438	7 258	2 275	1 198	3 367	14 097	44 021
Q3	1 751	10 665	12 416	6 036	2 938	1 598	8 310	31 297	1 947	5 600	7 547	2 330	1 543	3 557	14 977	46 274
Q4	1 867	10 336	12 204	5 798	2 640	1 509	8 132	30 282	1 923	5 538	7 460	2 285	1 306	3 404	14 455	44 737
2020 Q1	1 613	9 241	10 855	5 628	2 634	1 494	7 272	27 883	2 091	4 880	6 971	2 290	1 300	3 166	13 728	41 611
Q2	1 711	5 097	5 808	4 878	2 080	1 006	4 770	18 543	989	3 149	4 138	1 969	912	2 208	9 228	27 771
Q3	1 204	9 087	10 292	5 867	2 668	1 198	6 445	26 469	1 557	5 608	7 165	2 642	1 378	3 198	14 383	40 853
Q4	1 252	9 894	11 146	6 131	2 570	1 203	6 384	27 433	1 726	5 878	7 604	2 622	1 311	3 227	14 764	42 197
2021 Q1	1 152	9 125	10 276	6 340	2 476	1 075	5 795	25 961	1 755	5 516	7 271	2 647	1 366	3 302	14 585	40 547
Q2	1 361	10 524	11 885	7 511	2 508	1 172	6 187	29 263	1 673	6 048	7 721	2 721	1 260	3 436	15 138	44 402
Q3	1 397	10 418	11 815	8 122	2 649	1 416	5 837	29 838	1 738	6 536	8 275	2 872	1 577	3 582	16 306	46 144
Q4	1 116	10 965	12 081	7 736	2 477	1 539	5 932	29 765	1 776	7 138	8 915	2 938	1 409	3 845	17 107	46 872
2022 Q1	1 416	10 687	12 103	7 447	2 351	1 657	5 744	29 302	1 798	6 920	8 718	2 804	1 519	4 195	17 237	46 539
Q2	1 638	13 037	14 674	8 042	2 437	2 038	6 346	33 537	1 812	7 281	9 093	2 911	1 460	4 209	17 674	51 211
Q3	1 414	13 391	14 805	8 462	2 517	2 306	6 706	34 796	1 742	7 791	9 534	3 186	1 768	4 656	19 144	53 940
Q4	1 680	13 365	15 045	9 095	2 606	2 170	6 849	35 765	1 796	7 851	9 647	3 154	1 652	4 699	19 153	54 918
2023 Q1	1 559	11 501	13 060	8 656	2 726	2 143	6 863	33 448	2 009	7 760	9 769	3 026	1 775	4 937	19 507	52 956
Q2	1 834	12 315	14 149	9 434	3 037	2 169	6 920	35 709	1 960	8 001	9 961	3 170	1 595	4 952	19 678	55 387
Q3	1 737	11 783	13 520	9 761	3 022	2 156	7 601	36 061	1 905	8 136	10 041	3 536	2 109	5 389	21 074	57 134
Q4	1 750	10 821	12 571	8 773	2 879	2 013	7 405	33 640	2 023	8 758	10 782	3 900	1 922	5 160	21 763	55 403
2024 Q1	1 550	10 234	11 785	7 917	2 756	1 926	6 705	31 089	2 104	8 731	10 835	3 725	1 578	4 994	21 132	52 221
Q2	1 669	11 477	13 146	8 222	2 999	2 104	7 010	33 481	1 991	8 906	10 897	3 905	1 553	5 179	21 534	55 015

Users of these data should note that there may be instances where the period on period growths for the same component differ between tables. This is due to the growth rates being calculated at a higher precision than 1 dp within the production system. This accuracy is truncated when transferred into the published tables.

4M CONSTRUCTION OUTPUT: VALUE NON-SEASONALLY ADJUSTED CURRENT PRICES BY SECTOR

£ million

	New Housing				Other New Work				Repair and Maintenance				Other Work		All Repair and Maintenance	All Work
	Public housing	Private housing	Total new housing	Infra-structure	Excluding Infrastructure			All new work	Housing			Public	Private			
					Public	Private industrial	Private commercial		Public housing	Private housing	Total housing			Infra-structure		
	MV6L	MV6M	MVM5	MV6N	MV6O	MV6P	MV6Q	MV6R	MV6S	MV6T	MV6V	MV6W	MV6X	MV6Y	MV6Z	MV72
2018 Jun	560	3 356	3 916	1 795	851	507	2 602	9 671	649	1 878	2 527	763	393	1 110	4 794	14 465
Jul	498	3 304	3 802	1 825	990	507	2 616	9 740	633	1 934	2 567	762	447	1 149	4 925	14 666
Aug	477	3 167	3 644	1 833	1 030	465	2 666	9 638	624	1 812	2 436	770	578	1 193	4 977	14 616
Sep	540	3 170	3 710	1 847	934	464	2 541	9 496	609	1 770	2 379	756	541	1 206	4 882	14 378
Oct	507	3 534	4 041	2 032	999	494	2 767	10 334	638	1 932	2 570	821	470	1 230	5 090	15 424
Nov	523	3 534	4 057	1 956	897	472	2 778	10 160	622	1 956	2 579	775	421	1 192	4 967	15 127
Dec	568	2 971	3 539	1 680	791	440	2 358	8 808	535	1 591	2 127	651	321	994	4 093	12 901
2019 Jan	458	2 875	3 334	1 716	787	462	2 236	8 535	571	1 644	2 215	728	364	1 077	4 384	12 919
Feb	493	3 127	3 620	1 860	833	447	2 368	9 128	634	1 724	2 358	786	386	1 082	4 611	13 740
Mar	605	3 350	3 955	2 039	945	477	2 648	10 064	703	1 830	2 533	896	467	1 165	5 061	15 125
Apr	541	3 330	3 871	1 909	861	469	2 627	9 737	591	1 722	2 314	770	408	1 116	4 609	14 346
May	598	3 423	4 021	2 034	866	512	2 650	10 084	616	1 872	2 488	784	381	1 146	4 799	14 883
Jun	725	3 561	4 285	1 869	858	489	2 601	10 103	613	1 843	2 456	720	408	1 105	4 689	14 792
Jul	563	3 696	4 259	2 014	982	515	2 767	10 537	675	1 948	2 623	784	488	1 218	5 112	15 649
Aug	566	3 481	4 047	1 941	998	538	2 799	10 323	627	1 815	2 442	789	534	1 195	4 959	15 283
Sep	623	3 488	4 111	2 081	957	544	2 744	10 437	645	1 838	2 483	757	521	1 144	4 905	15 342
Oct	625	3 647	4 273	2 065	912	534	2 875	10 659	668	1 976	2 644	810	473	1 219	5 147	15 806
Nov	633	3 546	4 180	1 934	911	530	2 757	10 312	664	1 933	2 597	792	449	1 139	4 977	15 289
Dec	609	3 143	3 752	1 799	817	445	2 499	9 311	591	1 628	2 219	683	384	1 046	4 331	13 642
2020 Jan	505	3 019	3 524	1 837	827	471	2 361	9 019	629	1 516	2 145	695	358	1 000	4 197	13 217
Feb	529	3 005	3 534	1 817	882	493	2 463	9 189	678	1 661	2 339	757	428	1 051	4 575	13 764
Mar	579	3 218	3 798	1 974	924	531	2 449	9 674	785	1 703	2 488	839	514	1 115	4 956	14 630
Apr	166	1 290	1 456	1 419	653	290	1 407	5 225	318	782	1 100	595	280	619	2 594	7 819
May	223	1 505	1 729	1 756	662	324	1 465	5 937	292	903	1 195	613	286	701	2 796	8 733
Jun	322	2 302	2 624	1 702	765	392	1 898	7 380	379	1 465	1 844	761	346	888	3 839	11 219
Jul	401	2 890	3 291	1 983	877	395	2 141	8 687	488	1 854	2 342	888	441	1 057	4 728	13 415
Aug	392	2 939	3 331	1 927	917	392	2 041	8 607	497	1 788	2 285	830	468	1 025	4 609	13 216
Sep	411	3 258	3 670	1 956	874	411	2 264	9 175	572	1 966	2 538	924	469	1 115	5 047	14 222
Oct	437	3 435	3 872	1 996	911	428	2 258	9 466	592	2 123	2 715	922	462	1 126	5 225	14 691
Nov	444	3 365	3 808	2 133	867	428	2 240	9 476	604	1 986	2 589	913	442	1 089	5 033	14 509
Dec	371	3 094	3 465	2 001	792	347	1 886	8 491	530	1 769	2 299	788	407	1 012	4 506	12 997
2021 Jan	309	2 589	2 898	1 912	750	319	1 717	7 596	546	1 559	2 105	755	370	984	4 213	11 809
Feb	384	2 939	3 323	2 049	795	347	1 921	8 435	553	1 832	2 385	846	419	1 083	4 733	13 168
Mar	458	3 597	4 055	2 379	931	409	2 157	9 931	657	2 125	2 782	1 046	576	1 236	5 639	15 570
Apr	441	3 394	3 836	2 416	866	384	2 098	9 600	552	1 938	2 490	942	406	1 149	4 988	14 587
May	436	3 400	3 836	2 520	776	373	1 996	9 500	557	2 024	2 581	859	438	1 149	5 027	14 527
Jun	484	3 730	4 214	2 576	866	415	2 093	10 164	564	2 086	2 650	920	416	1 137	5 123	15 287
Jul	452	3 440	3 892	2 741	895	456	1 996	9 980	596	2 113	2 709	984	480	1 135	5 308	15 288
Aug	473	3 390	3 863	2 707	872	469	1 906	9 817	558	2 126	2 684	939	524	1 198	5 345	15 163
Sep	472	3 587	4 059	2 673	883	491	1 935	10 041	584	2 298	2 882	949	573	1 250	5 653	15 693
Oct	477	3 594	4 071	2 675	874	510	2 032	10 162	607	2 412	3 018	982	471	1 278	5 748	15 911
Nov	344	3 822	4 166	2 742	856	542	2 096	10 402	629	2 465	3 094	963	494	1 341	5 892	16 294
Dec	296	3 549	3 844	2 319	747	487	1 804	9 201	541	2 262	2 803	993	444	1 227	5 467	14 667
2022 Jan	367	3 182	3 549	2 279	674	505	1 748	8 755	515	2 110	2 625	849	402	1 234	5 110	13 865
Feb	449	3 476	3 926	2 388	770	510	1 847	9 442	576	2 241	2 817	921	459	1 357	5 554	14 996
Mar	600	4 028	4 628	2 780	907	641	2 149	11 105	707	2 569	3 276	1 034	658	1 605	6 573	17 678
Apr	539	3 990	4 529	2 728	813	627	1 970	10 666	575	2 187	2 762	883	456	1 372	5 474	16 140
May	488	4 411	4 899	2 652	812	694	2 197	11 254	610	2 540	3 150	1 021	483	1 457	6 111	17 365
Jun	610	4 636	5 246	2 662	812	717	2 180	11 618	627	2 554	3 181	1 007	521	1 380	6 089	17 706
Jul	485	4 435	4 920	2 718	815	786	2 224	11 463	597	2 619	3 216	1 053	547	1 464	6 281	17 744
Aug	479	4 463	4 942	2 842	866	779	2 202	11 632	548	2 567	3 115	1 051	648	1 577	6 391	18 023
Sep	449	4 493	4 942	2 902	836	740	2 280	11 701	597	2 605	3 202	1 082	573	1 614	6 472	18 173
Oct	537	4 750	5 286	2 956	850	721	2 323	12 136	633	2 718	3 352	1 106	570	1 592	6 620	18 756
Nov	575	4 570	5 145	3 183	922	794	2 350	12 394	605	2 776	3 381	1 060	574	1 641	6 656	19 050
Dec	568	4 045	4 613	2 956	833	655	2 177	11 235	558	2 357	2 915	988	508	1 466	5 877	17 112
2023 Jan	433	3 507	3 940	2 666	760	659	2 104	10 129	607	2 257	2 865	925	488	1 467	5 745	15 874
Feb	488	3 705	4 192	2 767	860	707	2 233	10 759	653	2 607	3 259	1 003	550	1 637	6 450	17 209
Mar	638	4 289	4 928	3 223	1 106	777	2 527	12 560	749	2 896	3 645	1 098	736	1 833	7 312	19 873
Apr	585	3 800	4 385	3 042	979	703	2 195	11 304	624	2 468	3 091	950	554	1 584	6 178	17 482
May	561	4 072	4 634	3 127	983	747	2 290	11 780	666	2 764	3 430	1 083	517	1 648	6 678	18 458
Jun	688	4 442	5 130	3 265	1 076	719	2 435	12 625	670	2 770	3 440	1 137	524	1 720	6 822	19 447
Jul	558	3 974	4 532	3 291	1 028	762	2 566	12 180	632	2 687	3 319	1 137	620	1 748	6 825	19 004
Aug	596	3 932	4 528	3 283	1 066	702	2 491	12 070	662	2 659	3 321	1 121	737	1 851	7 030	19 101
Sep	583	3 878	4 461	3 187	928	692	2 543	11 811	611	2 789	3 400	1 278	752	1 789	7 219	19 030
Oct	567	3 870	4 437	3 177	1 060	672	2 622	11 968	675	3 014	3 689	1 327	701	1 811	7 527	19 495
Nov	587	3 726	4 312	3 094	974	709	2 564	11 654	721	3 089	3 810	1 355	611	1 862	7 638	19 292
Dec	597	3 224	3 821	2 503	844	631	2 219	10 018	628	2 655	3 283	1 218	610	1 487	6 598	16 617
2024 Jan	472	3 150	3 622	2 547	833	618	2 109	9 729	682	2 689	3 370	1 238	496	1 527	6 632	16 361
Feb	499	3 305	3 804	2 620	933	653	2 240	10 251	674	2 922	3 596	1 228	546	1 678	7 047	17 298
Mar	580	3 779	4 359	2 749	990	655	2 356	11 110	748	3 121	3 869	1 259	535	1 789	7 452	18 562
Apr	503	3 616	4 119	2 710	954	680	2 236	10 700	653	2 974	3 627	1 259	531	1 743	7 160	17 859
May	534	3 866	4 399	2 769	998	716	2 388	11 271	668	3 110	3 778	1 258	510	1 775	7 322	18 593
Jun	632	3 996	4 628	2 743	1 047	707	2 385	11 510	670	2 822	3 492	1 388	512	1 660	7 053	18 563

3MOMSA CONSTRUCTION OUTPUT: VOLUME SEASONALLY ADJUSTED PERCENTAGE CHANGE 3 MONTHS ON PREVIOUS 3 MONTHS

%

	New Housing				Other New Work				Repair and Maintenance					
	Public housing	Private housing	Total new housing	Infra-structure	Excluding Infrastructure			All new work	Housing			Non housing R&M	All Repair and Maintenance	All Work
					Public	Private industrial	Private commercial		Public housing	Private housing	Total housing			
	MVO6	MVO7	MVO8	MVO9	MVP2	MVP3	MVP4	MV6U	N3OZ	N3P2	N3P3	N3P4	N3P5	N3P6
2018 Jun	0.7	-2.3	-1.9	-0.6	-0.1	6.7	-1.9	-1.1	0.6	3.4	2.7	4.4	3.5	0.5
Jul	2.8	0.2	0.6	2.6	4.0	4.8	-1.8	0.8	1.0	4.0	3.2	5.7	4.4	2.1
Aug	4.4	3.6	3.7	3.5	3.9	-0.4	-3.1	1.6	1.7	1.2	1.3	3.7	2.5	1.9
Sep	4.3	4.9	4.8	1.4	4.3	-3.4	-4.0	1.2	-1.5	-1.0	-1.1	2.6	0.7	1.0
Oct	2.1	2.5	2.5	3.2	4.0	-6.4	-3.0	0.8	-1.9	-3.3	-2.9	1.4	-0.8	0.2
Nov	1.2	2.6	2.4	4.1	2.2	-4.0	-0.1	1.7	-3.4	-2.2	-2.5	-0.3	-1.4	0.6
Dec	2.3	1.2	1.3	3.0	0.2	1.7	1.6	1.6	-2.3	-1.6	-1.8	-4.0	-2.9	-
2019 Jan	7.0	2.0	2.7	-0.1	-5.7	6.5	0.3	0.9	-2.7	0.6	-0.3	-3.7	-2.0	-0.1
Feb	10.5	2.7	3.7	-0.7	-3.9	7.4	-1.8	0.8	0.2	1.0	0.8	-1.4	-0.3	0.4
Mar	8.4	3.0	3.8	2.0	-1.6	3.6	-1.8	1.4	0.9	2.7	2.2	3.9	3.0	2.0
Apr	5.3	2.0	2.5	3.3	2.0	-0.6	1.2	2.1	2.2	1.2	1.4	3.9	2.6	2.3
May	3.5	-2.4	-1.5	2.6	-0.7	-1.7	2.2	0.3	-0.4	-0.1	-0.2	2.3	1.1	0.6
Jun	6.8	-2.7	-1.3	-0.8	-3.6	-1.9	0.9	-0.9	0.4	-1.4	-0.9	-	-0.5	-0.7
Jul	3.0	-1.2	-0.6	-1.9	-3.4	-0.7	-1.2	-1.3	1.8	-0.7	-0.1	-1.4	-0.7	-1.1
Aug	-0.5	2.9	2.4	-4.6	-0.8	-0.1	0.1	-	3.1	0.3	1.0	-1.2	-0.1	-0.1
Sep	-6.8	3.8	2.1	-1.4	1.2	2.7	1.4	1.2	3.3	-	0.8	-2.2	-0.7	0.5
Oct	-2.2	0.8	0.3	-0.4	0.2	3.5	1.8	0.7	0.9	-0.3	-	-2.6	-1.3	-
Nov	2.2	-1.9	-1.3	2.0	-1.0	2.6	-0.6	-0.2	0.9	-0.4	-0.1	-3.0	-1.5	-0.7
Dec	6.5	-2.9	-1.5	-1.8	-1.4	-	-0.5	-1.2	0.5	-0.3	-	-1.6	-0.8	-1.1
2020 Jan	4.9	0.7	1.3	-1.1	2.0	1.4	-0.6	0.4	2.0	-1.8	-0.8	-1.4	-1.1	-0.1
Feb	1.8	1.1	1.2	0.2	3.8	2.1	0.5	1.1	2.7	-4.1	-2.3	0.1	-1.1	0.3
Mar	-2.0	-1.7	-1.8	1.6	3.5	4.9	-3.9	-0.9	3.5	-6.4	-3.8	-0.6	-2.2	-1.3
Apr	-25.2	-25.0	-25.0	-9.0	-8.1	-10.8	-19.1	-18.1	-13.9	-20.8	-18.9	-9.0	-14.1	-16.7
May	-45.9	-42.2	-42.7	-12.7	-18.2	-24.9	-33.3	-31.2	-33.3	-34.7	-34.3	-19.6	-27.1	-29.8
Jun	-62.4	-50.8	-52.6	-15.2	-22.1	-36.2	-37.9	-37.6	-49.1	-38.1	-41.2	-22.1	-31.7	-35.6
Jul	-38.4	-18.2	-21.3	2.6	-8.8	-21.1	-16.5	-13.6	-31.2	-5.5	-13.0	-2.8	-7.7	-11.5
Aug	1.8	31.8	27.4	8.1	8.1	-2.8	11.1	14.7	3.4	44.7	32.9	18.6	25.2	18.4
Sep	70.8	81.1	79.8	15.2	15.7	12.2	30.6	38.5	51.5	72.6	67.3	27.9	45.0	40.9
Oct	36.2	46.6	45.3	4.7	11.3	7.3	16.4	22.1	42.4	42.1	42.2	13.9	26.8	23.8
Nov	18.0	21.1	20.7	3.8	3.5	5.2	7.9	11.1	26.1	16.3	18.5	7.0	12.6	11.6
Dec	3.1	8.1	7.5	3.5	3.5	4.9	-0.3	4.2	11.7	5.8	7.1	2.8	5.0	4.5
2021 Jan	4.0	2.2	2.4	7.3	0.6	-1.1	-3.3	1.8	5.2	-1.5	0.1	2.1	1.1	1.5
Feb	3.7	1.1	1.4	7.6	1.1	-6.1	-5.6	0.7	-0.7	-1.8	-1.5	0.9	-0.3	0.3
Mar	11.3	1.3	2.5	7.6	0.4	-4.2	-1.9	2.1	-2.0	0.2	-0.3	3.8	1.7	2.0
Apr	13.3	4.4	5.4	9.9	1.4	2.3	2.2	5.2	-3.1	5.4	3.4	7.7	5.5	5.3
May	6.9	3.9	4.3	14.8	-1.1	3.3	1.4	5.5	-1.2	5.3	3.8	8.0	5.9	5.7
Jun	-4.8	0.7	-	16.5	-2.8	0.5	-1.0	3.4	-1.1	1.8	1.1	4.3	2.7	3.2
Jul	-12.0	-2.8	-3.9	13.6	-5.2	-0.6	-6.2	-0.1	-0.8	-0.9	-0.9	-1.8	-1.3	-0.6
Aug	-8.8	-4.5	-5.0	7.9	-3.4	5.8	-7.7	-1.7	-2.4	0.2	-0.3	-4.4	-2.4	-2.0
Sep	-1.5	-2.8	-2.7	2.8	-4.7	10.1	-9.7	-2.4	-1.6	4.2	2.8	-4.2	-0.7	-1.8
Oct	1.9	-1.7	-1.3	-2.2	-3.6	11.4	-7.4	-2.5	-1.1	8.4	6.2	-2.0	2.1	-0.8
Nov	-9.3	0.6	-0.6	-4.3	-3.3	11.1	-3.2	-1.9	1.5	9.2	7.5	1.2	4.4	0.5
Dec	-22.6	2.8	-0.2	-5.8	-1.9	13.6	1.2	-1.0	1.5	9.0	7.4	4.5	6.0	1.6
2022 Jan	-19.3	6.3	3.3	-3.9	-3.9	15.9	2.8	1.2	-0.9	6.5	5.0	7.0	5.9	3.0
Feb	3.4	7.7	7.3	-3.5	-4.5	13.5	1.4	2.5	-3.6	3.9	2.4	6.7	4.4	3.2
Mar	39.3	4.9	8.1	0.4	-4.0	11.1	1.2	3.8	-2.8	1.3	0.4	4.6	2.4	3.2
Apr	39.3	2.9	6.3	1.9	-0.3	8.8	0.1	3.5	1.6	-1.4	-0.8	2.5	0.8	2.4
May	18.9	3.5	5.0	1.1	0.1	11.8	2.6	3.5	4.4	-0.1	0.8	2.8	1.7	2.8
Jun	-1.3	5.8	5.0	-3.6	-1.4	11.6	2.1	2.1	3.7	-	0.8	1.8	1.3	1.8
Jul	-7.5	5.8	4.2	-8.4	-4.6	12.0	4.3	0.7	1.1	4.7	4.0	2.5	3.3	1.7
Aug	-6.7	2.8	1.7	-5.5	-6.2	9.6	1.5	-0.3	-3.7	4.3	2.7	0.3	1.5	0.4
Sep	-7.1	1.7	0.7	-0.7	-4.7	7.1	2.1	0.6	-5.2	4.5	2.5	0.8	1.7	1.0
Oct	-2.7	0.9	0.6	5.3	-0.9	1.5	0.3	1.6	-4.0	0.2	-0.7	0.1	-0.3	0.8
Nov	3.0	-0.2	0.1	6.7	4.4	-1.3	0.4	2.0	0.8	-1.0	-0.7	0.8	0.1	1.2
Dec	12.3	-1.4	-	8.7	8.7	-1.8	1.5	2.9	2.6	-1.6	-0.8	1.7	0.4	1.9
2023 Jan	12.5	-5.3	-3.5	7.6	7.1	1.4	3.1	1.6	2.6	-1.8	-0.9	1.9	0.5	1.2
Feb	5.9	-6.1	-4.8	3.4	4.3	1.4	5.9	0.4	5.6	-0.2	0.9	3.2	2.0	1.0
Mar	-2.2	-8.6	-7.9	-2.4	1.9	0.5	3.3	-3.0	5.6	3.0	3.5	2.3	2.9	-0.7
Apr	-3.2	-7.2	-6.7	-2.5	7.1	-1.2	0.8	-2.7	5.8	6.4	6.3	3.2	4.8	0.2
May	-1.1	-7.2	-6.5	0.1	9.6	-3.1	-3.9	-2.8	1.2	4.5	3.8	1.8	2.8	-0.6
Jun	1.6	-4.8	-4.0	4.0	9.9	-4.5	-3.9	-0.8	1.4	1.0	1.1	3.9	2.5	0.5
Jul	1.6	-3.7	-3.0	4.0	4.7	-5.5	-0.4	-0.2	-0.6	-1.2	-1.1	3.5	1.2	0.4
Aug	2.4	-2.3	-1.7	3.5	1.5	-6.1	4.6	0.9	0.1	-0.7	-0.6	4.8	2.1	1.4
Sep	1.2	-3.4	-2.8	0.7	-4.3	-5.4	6.8	-0.2	-2.0	0.4	-0.1	3.8	1.9	0.6
Oct	0.9	-5.1	-4.3	-1.7	-4.0	-5.4	3.4	-2.0	0.2	2.2	1.8	4.1	2.9	-
Nov	-1.4	-6.9	-6.2	-4.3	-4.8	-2.5	0.6	-3.9	0.9	4.5	3.8	4.5	4.2	-0.6
Dec	1.0	-7.4	-6.3	-7.1	0.6	-	-1.7	-4.5	5.7	5.4	5.5	3.2	4.3	-0.9
2024 Jan	4.4	-4.6	-3.4	-7.6	-1.2	2.0	-2.6	-3.8	6.7	5.2	5.5	1.7	3.6	-0.7
Feb	5.0	-1.2	-0.4	-7.1	0.8	1.0	-3.5	-2.7	4.5	3.4	3.6	-1.1	1.2	-1.0
Mar	-0.7	3.3	2.7	-3.8	-1.8	-2.3	-4.0	-1.2	-0.8	3.7	2.8	-2.4	0.2	-0.6
Apr	-9.8	2.2	0.4	-3.1	-1.8	-3.4	-3.1	-1.7	-3.9	1.7	0.6	-2.4	-0.9	-1.4
May	-11.1	1.9	-	-1.9	-1.9	-2.5	-1.5	-1.1	-2.8	1.3	0.5	-0.6	-0.1	-0.7
Jun	-8.2	-0.8	-1.9	-0.6	2.5	0.3	0.3	-0.5	-0.7	-2.6	-2.2	3.0	0.4	-0.1

Users of these data should note that there may be instances where the period on period growths for the same component differ between tables. This is due to the growth rates being calculated at a higher precision than 1 dp within the production system. This accuracy is truncated when transferred into the published tables.

3MOYSA CONSTRUCTION OUTPUT: VOLUME SEASONALLY ADJUSTED PERCENTAGE CHANGE 3 MONTHS ON SAME PERIOD A YEAR EARLIER

%

	New Housing				Other New Work				Repair and Maintenance					All Repair and Maintenan- ce	All Work
	Public housing		Total new housing	Infrastru- cture	Excluding Infrastructure			All new work	Housing			Non housing R&M			
	N3P7	N3P8			Public	Private industrial	Private commercial		Public housing	Private housing	Total housing				
2018 Jun	-5.3	4.4	2.9	2.1	-15.2	16.9	-7.4	-1.7	-3.5	1.7	0.3	4.1	2.1	-0.4	
Jul	-4.2	7.0	5.3	2.6	-8.8	15.3	-7.5	-0.1	-3.3	3.1	1.4	5.6	3.4	1.1	
Aug	-0.7	6.6	5.5	2.2	-7.0	7.8	-9.2	-0.6	-3.3	1.6	0.3	6.4	3.2	0.7	
Sep	-0.8	8.4	7.0	2.6	-5.1	3.4	-9.7	-0.1	-4.1	0.2	-1.0	6.7	2.7	0.9	
Oct	1.0	7.1	6.2	6.6	-4.7	-0.2	-8.5	0.6	-4.0	-1.6	-2.2	7.5	2.4	1.2	
Nov	0.4	7.4	6.4	8.8	-4.2	2.0	-5.8	2.1	-4.6	-2.0	-2.7	5.4	1.1	1.7	
Dec	0.4	2.6	2.3	5.8	-7.2	7.9	-4.7	0.3	-5.5	-2.7	-3.4	2.0	-0.8	-0.1	
2019 Jan	4.4	2.9	3.1	0.4	-8.1	13.1	-6.6	-0.8	-5.7	-0.6	-2.0	2.2	0.1	-0.5	
Feb	10.6	3.2	4.2	1.0	-4.4	14.5	-7.6	-0.1	-3.9	1.7	0.2	4.6	2.3	0.7	
Mar	16.5	6.8	8.1	5.9	2.7	8.6	-6.0	3.2	-2.4	3.5	1.9	6.8	4.3	3.6	
Apr	18.3	6.9	8.5	9.2	4.1	3.9	-3.3	4.7	-1.5	2.4	1.4	7.2	4.2	4.5	
May	20.8	6.6	8.5	9.7	1.3	1.0	-2.8	4.5	-1.8	-0.1	-0.6	4.3	1.8	3.5	
Jun	23.4	6.4	8.8	5.7	-0.8	-0.1	-3.3	3.4	-2.6	-1.4	-1.7	2.3	0.2	2.3	
Jul	18.6	5.4	7.2	4.4	-3.4	-1.6	-2.7	2.5	-0.8	-2.2	-1.8	0.1	-0.9	1.3	
Aug	15.2	5.8	7.1	1.2	-3.3	1.2	0.4	2.8	-0.5	-1.0	-0.9	-0.7	-0.8	1.6	
Sep	10.2	5.3	6.0	2.8	-3.8	6.2	2.1	3.4	2.1	-0.4	0.3	-2.5	-1.1	1.8	
Oct	13.6	3.6	5.0	0.8	-7.0	8.8	2.1	2.4	2.0	0.8	1.1	-3.8	-1.4	1.1	
Nov	16.3	1.2	3.3	-0.8	-6.2	8.2	-0.1	0.9	3.9	0.7	1.6	-3.3	-0.9	0.3	
Dec	14.8	1.1	3.0	-2.0	-5.3	4.5	-	0.5	5.1	1.0	2.0	-0.1	1.0	0.7	
2020 Jan	11.4	2.2	3.5	-0.2	0.6	3.6	1.2	1.9	7.0	-1.6	0.6	-1.6	-0.5	1.1	
Feb	7.2	-0.4	0.7	0.1	1.3	3.0	2.3	1.2	6.4	-4.4	-1.6	-1.9	-1.7	0.2	
Mar	3.8	-3.6	-2.5	-2.5	-0.4	5.8	-2.1	-1.8	7.9	-8.0	-3.9	-4.4	-4.2	-2.6	
Apr	-20.9	-24.8	-24.3	-12.1	-9.3	-7.1	-19.1	-18.3	-9.8	-23.0	-19.6	-13.8	-16.7	-17.7	
May	-44.0	-41.0	-41.4	-14.8	-16.6	-21.4	-33.2	-30.6	-28.8	-37.5	-35.2	-22.9	-29.1	-30.1	
Jun	-63.4	-51.3	-53.2	-16.6	-19.6	-31.2	-39.8	-38.2	-45.2	-42.2	-43.0	-25.5	-34.3	-36.9	
Jul	-52.7	-37.7	-40.0	-8.0	-14.4	-26.2	-31.6	-28.5	-39.1	-26.7	-30.0	-15.0	-22.6	-26.4	
Aug	-42.7	-24.4	-27.1	-3.5	-9.1	-23.5	-25.9	-20.4	-28.5	-9.7	-14.7	-7.5	-11.1	-17.2	
Sep	-33.0	-15.0	-17.6	-2.5	-8.0	-24.9	-22.4	-15.4	-19.7	-0.2	-5.4	-2.5	-4.0	-11.5	
Oct	-34.2	-9.4	-13.1	-3.4	-4.9	-23.5	-21.8	-13.3	-14.0	4.4	-0.5	-0.7	-0.6	-8.9	
Nov	-33.8	-6.7	-10.9	-1.9	-5.0	-21.5	-19.6	-11.4	-10.8	5.4	1.1	2.1	1.6	-6.9	
Dec	-35.1	-5.4	-10.1	2.8	-3.5	-21.3	-22.3	-10.8	-10.8	5.9	1.4	1.9	1.6	-6.5	
2021 Jan	-34.8	-8.0	-12.2	4.9	-6.2	-25.3	-23.9	-12.1	-11.3	4.8	0.4	2.9	1.6	-7.4	
Feb	-32.6	-6.6	-10.7	5.3	-7.5	-27.9	-24.5	-11.8	-13.7	7.9	1.9	2.9	2.4	-7.0	
Mar	-26.3	-2.4	-6.2	8.9	-6.5	-28.1	-20.7	-8.1	-15.6	13.4	5.0	6.4	5.7	-3.4	
Apr	-1.2	28.0	23.5	26.7	3.5	-14.4	-3.9	13.0	-0.1	39.5	28.0	21.8	24.8	17.1	
May	33.2	67.8	62.7	38.4	12.0	-0.8	14.7	35.4	27.9	74.1	60.9	38.3	48.6	40.1	
Jun	86.7	99.7	98.1	49.5	16.8	13.3	26.4	52.5	64.0	86.4	80.8	42.4	59.1	54.9	
Jul	41.2	52.2	50.8	40.3	7.6	8.0	7.9	30.6	44.2	46.2	45.8	23.1	33.4	31.6	
Aug	19.3	21.5	21.3	38.3	-	7.9	-4.8	16.1	20.8	20.6	20.6	11.4	15.9	16.0	
Sep	7.7	7.2	7.2	33.3	-3.8	11.2	-12.6	7.5	6.5	12.5	11.1	6.6	8.9	8.0	
Oct	5.7	2.1	2.5	31.1	-6.8	12.1	-14.1	4.3	-	11.5	8.9	5.8	7.4	5.5	
Nov	-8.3	0.9	-0.1	27.5	-6.5	13.9	-14.5	2.5	-2.8	13.2	9.4	5.4	7.5	4.4	
Dec	-19.1	1.9	-0.5	21.3	-8.7	20.4	-11.2	2.1	-3.2	15.9	11.4	8.4	9.9	5.0	
2022 Jan	-18.0	6.1	3.3	17.5	-10.9	31.3	-8.7	3.7	-5.7	20.6	14.2	10.9	12.6	7.0	
Feb	-8.6	7.5	5.6	14.4	-11.8	37.7	-8.1	4.3	-5.6	19.8	13.7	11.5	12.6	7.4	
Mar	1.2	5.5	5.0	13.2	-12.7	39.6	-8.4	3.7	-3.9	17.1	12.2	9.2	10.7	6.3	
Apr	0.8	4.6	4.2	8.9	-12.4	39.7	-10.5	2.0	-1.2	12.8	9.6	5.5	7.6	4.1	
May	1.7	7.0	6.4	0.8	-10.8	49.0	-7.1	2.3	-0.4	13.6	10.4	6.1	8.2	4.5	
Jun	4.9	10.8	10.2	-6.3	-11.5	54.9	-5.5	2.3	0.7	15.0	11.8	6.5	9.1	4.8	
Jul	5.9	13.8	12.9	-12.2	-11.8	57.4	-0.5	2.9	0.7	19.2	15.0	10.1	12.6	6.5	
Aug	4.1	15.2	13.9	-11.8	-13.4	54.4	2.2	3.7	-1.7	18.2	13.8	11.3	12.6	7.0	
Sep	-1.1	16.0	14.0	-9.4	-11.5	50.8	6.7	5.5	-2.9	15.4	11.4	12.1	11.8	7.8	
Oct	1.2	16.9	15.0	-5.6	-9.3	43.5	7.7	7.1	-2.3	10.2	7.5	12.5	9.9	8.2	
Nov	18.2	14.4	14.8	-1.6	-6.5	37.2	6.0	7.8	-2.4	7.2	5.2	10.9	7.9	7.9	
Dec	43.5	11.3	14.2	4.5	-1.9	30.4	7.0	9.6	-1.9	4.1	2.9	9.1	5.9	8.2	
2023 Jan	41.1	4.1	7.5	5.8	1.0	25.5	8.0	7.6	1.2	1.6	1.5	7.2	4.3	6.3	
Feb	21.0	-0.3	1.8	5.4	2.2	22.6	10.6	5.7	6.9	2.9	3.7	7.3	5.5	5.6	
Mar	0.8	-3.1	-2.6	1.5	4.2	18.1	9.3	2.5	6.6	5.9	6.0	6.8	6.4	4.0	
Apr	-2.0	-6.1	-5.7	1.2	8.5	13.9	8.7	1.1	5.3	9.6	8.7	7.9	8.3	3.9	
May	0.7	-10.6	-9.3	4.4	11.9	6.2	3.7	-0.7	3.7	7.7	6.9	6.3	6.6	2.1	
Jun	3.7	-12.8	-11.0	9.6	16.0	1.0	2.9	-0.4	4.2	6.9	6.4	8.9	7.6	2.7	
Jul	7.5	-14.5	-12.2	14.9	19.0	-4.0	3.7	0.2	3.5	3.4	3.4	9.0	6.2	2.6	
Aug	10.5	-15.0	-12.3	14.3	21.2	-9.0	6.9	0.5	7.7	2.4	3.5	11.0	7.2	3.1	
Sep	13.0	-17.2	-14.1	11.1	16.5	-10.8	7.6	-1.3	7.7	2.7	3.6	12.2	7.8	2.3	
Oct	11.5	-19.6	-16.4	7.3	15.3	-10.6	7.0	-3.3	8.0	5.6	6.0	13.3	9.6	1.7	
Nov	5.8	-20.7	-17.9	2.4	10.5	-10.1	7.1	-5.3	7.8	8.1	8.1	15.1	11.5	1.2	
Dec	1.6	-22.2	-19.4	-5.1	7.8	-9.2	4.2	-8.4	10.9	10.0	10.2	13.9	12.0	-0.6	
2024 Jan	3.5	-19.0	-16.3	-7.9	6.5	-10.0	1.1	-8.5	12.3	13.1	12.9	13.1	13.0	-0.2	
Feb	4.8	-16.6	-14.0	-7.9	6.8	-10.4	-2.4	-8.2	6.8	12.1	11.0	10.2	10.6	-0.8	
Mar	3.1	-12.1	-10.2	-6.4	3.9	-11.7	-3.1	-6.7	4.2	10.8	9.5	8.6	9.0	-0.4	
Apr	-3.5	-10.8	-9.9	-8.5	-2.4	-12.0	-2.8	-7.5	2.0	8.1	6.9	6.9	6.9	-1.7	
May	-5.8	-8.4	-8.1	-9.8	-4.5	-9.9	-	-6.7	2.5	8.7	7.4	7.6	7.5	-0.9	
Jun	-6.8	-8.4	-8.2	-10.5	-3.1	-7.2	1.1	-6.4	2.1	6.8	5.9	7.7	6.8	-1.0	

Users of these data should note that there may be instances where the period on period growths for the same component differ between tables. This is due to the growth rates being calculated at a higher precision than 1 dp within the production system. This accuracy is truncated when transferred into the published tables.

6A.A CONSTRUCTION OUTPUT: IMPLIED PRICE DEFLATOR NON-SEASONALLY ADJUSTED INDEX NUMBER BY SECTOR

Index 2019 = 100

	New Housing			Other New Work				Repair and Maintenance					All Repair and Maintena- nce	All Work
	Public housing	Private housing	Total new housing	Infra- struc- ture	Excluding Infrastructure			All new work	Housing			Non housing R&M		
					Public	Private industri- al	Private commerci- al		Public housing	Private housing	Total housing			
	MVK3	MVK4	MVM6	MVK5	MVK6	MVK7	MVK8	MVK9	MVKB	MVL2	MVL3	MVL4	MVL5	MVL6
1997	47.6	40.8	41.6	56.3	50.3	50.7	48.5	48.6	55.4	36.6	42.5	54.3	47.5	47.8
1998	50.4	43.6	44.3	56.2	52.2	53.8	52.3	51.2	58.0	37.9	43.9	56.4	49.2	50.0
1999	54.1	47.9	48.5	56.8	53.9	53.3	55.9	54.0	59.6	38.7	44.8	57.7	50.3	52.3
2000	56.4	50.4	51.0	63.4	56.4	56.2	58.4	57.0	62.3	40.4	46.6	60.3	52.6	55.0
2001	60.2	54.9	55.5	65.7	61.6	54.9	63.2	60.9	66.7	41.1	47.9	62.5	54.6	57.9
2002	63.9	59.9	60.4	66.2	63.2	63.6	68.1	65.1	67.7	43.9	49.6	65.1	56.8	61.3
2003	67.8	62.8	63.4	65.2	66.3	66.3	72.7	67.6	69.6	48.8	54.3	71.8	62.5	65.2
2004	72.9	65.1	66.0	65.8	69.8	70.1	73.2	69.4	70.1	53.7	58.4	75.5	66.2	68.0
2005	78.8	68.9	69.9	68.4	75.0	76.9	78.8	74.1	72.9	60.4	64.2	79.4	71.4	72.8
2006	84.4	71.9	73.3	73.4	78.2	79.4	82.7	78.0	77.9	65.7	69.4	81.1	75.1	76.7
2007	88.9	74.1	75.9	78.3	82.2	82.7	85.6	81.3	82.7	72.0	75.2	84.8	80.0	80.7
2008	93.1	78.1	80.1	79.1	88.3	88.5	86.4	84.3	87.0	77.6	80.4	87.4	83.9	83.9
2009	92.1	79.0	81.3	76.4	86.7	83.1	83.8	82.5	89.0	80.2	83.0	89.0	86.0	83.4
2010	87.7	79.1	80.9	76.1	79.8	75.7	78.9	78.9	88.3	81.3	83.5	89.1	86.1	81.3
2011	86.4	80.2	81.3	79.5	79.9	79.2	78.8	79.9	88.2	84.9	85.8	89.8	87.7	82.4
2012	84.9	82.1	82.5	83.7	82.6	81.9	81.5	82.4	91.4	89.1	89.7	90.7	90.2	84.9
2013	85.4	84.2	84.3	87.0	86.1	84.3	85.1	85.4	94.0	93.1	93.2	92.3	92.8	87.7
2014	86.6	86.6	86.5	89.8	87.8	85.8	87.8	87.6	94.3	94.3	94.2	92.8	93.5	89.5
2015	87.3	87.3	87.3	90.5	88.8	86.4	88.8	88.5	94.3	94.3	94.2	93.2	93.7	90.1
2016	89.9	90.0	90.0	91.6	91.4	89.6	91.3	90.9	95.4	95.4	95.3	94.5	95.0	92.2
2017	93.6	93.6	93.6	92.3	93.6	93.3	93.6	93.4	97.2	97.2	97.2	96.7	97.0	94.5
2018	97.1	97.1	97.2	95.4	96.7	97.0	96.7	96.6	98.7	98.7	98.7	98.2	98.5	97.2
2019	100.0	100.0	100.0	100.0	100.0	100.0	100.0	100.0	100.0	100.0	100.0	100.0	100.0	100.0
2020	100.6	100.7	100.8	101.6	100.6	100.1	100.6	100.8	100.8	100.9	100.9	100.8	100.8	100.6
2021	106.3	106.6	106.7	105.3	103.6	104.9	103.6	105.1	103.6	103.8	103.9	104.0	103.9	104.4
2022	118.1	118.2	118.4	117.2	112.2	115.0	112.3	116.0	108.9	109.0	109.1	111.4	110.2	113.5
2023	126.4	126.4	126.5	124.8	119.0	120.6	119.0	123.2	112.1	112.1	112.3	115.5	113.9	118.9

Users of these data should note that there may be instances where the period on period growths for the same component differ between tables. This is due to the growth rates being calculated at a higher precision than 1 dp within the production system. This accuracy is truncated when transferred into the published tables.

6A.Q CONSTRUCTION OUTPUT: IMPLIED PRICE DEFLATOR NON-SEASONALLY ADJUSTED INDEX NUMBERS BY SECTOR

Index 2019 = 100

	New Housing				Other New Work				Repair and Maintenance				All Repair and Maintenance	
	Public housing	Private housing	Total new housing	Infra-structure	Excluding Infrastructure			All new work	Housing					
					Public	Private industrial	Private commercial		Public housing	Private housing	Total housing	Non housing R&M		
	MVK3	MVK4	MVM6	MVK5	MVK6	MVK7	MVK8	MVK9	MVKB	MVL2	MVL3	MVL4	MVL5	MVL6
2009 Q3	91.9	78.7	81.2	76.1	86.3	81.5	83.9	82.3	87.8	80.2	82.6	90.0	86.3	83.3
Q4	90.5	78.6	81.0	75.7	84.1	78.0	81.9	80.7	88.8	79.9	82.7	90.0	86.4	82.5
2010 Q1	89.2	78.9	81.1	75.6	81.6	75.9	80.2	79.6	88.5	81.0	83.6	89.8	86.5	81.8
Q2	88.1	79.3	81.1	75.8	80.0	75.1	79.0	78.9	88.1	81.3	83.4	88.6	85.9	81.2
Q3	87.3	79.1	80.8	76.3	79.0	75.6	78.3	78.6	88.2	81.3	83.3	88.9	85.9	81.0
Q4	86.8	79.1	80.7	77.0	78.7	76.4	78.2	78.7	88.4	81.7	83.7	89.3	86.2	81.2
2011 Q1	86.7	79.4	80.9	78.0	79.0	76.9	78.4	79.0	87.4	83.4	84.6	89.4	86.9	81.6
Q2	86.6	79.8	81.1	78.9	79.5	78.2	78.8	79.6	87.7	84.4	85.3	89.4	87.3	82.1
Q3	86.4	80.4	81.5	79.9	80.3	80.2	78.8	80.1	88.1	85.4	86.1	90.0	88.0	82.7
Q4	86.1	81.2	82.0	81.2	81.0	81.7	79.2	80.8	89.6	86.2	87.1	90.2	88.6	83.3
2012 Q1	85.7	81.8	82.4	82.5	81.7	82.3	80.4	81.7	90.6	88.1	88.8	91.1	89.9	84.4
Q2	85.1	81.9	82.4	83.4	82.3	81.9	81.3	82.2	91.3	88.2	89.1	90.8	89.9	84.7
Q3	84.6	82.2	82.6	84.1	83.0	81.6	82.1	82.8	91.4	89.7	90.1	90.4	90.2	85.2
Q4	84.3	82.5	82.7	84.8	83.7	81.8	82.2	83.1	92.0	90.4	90.7	90.5	90.6	85.5
2013 Q1	84.5	82.8	83.0	85.6	84.7	82.8	83.3	83.9	92.8	92.0	92.0	90.7	91.4	86.3
Q2	85.1	83.4	83.6	86.5	85.7	84.0	84.5	84.8	94.7	92.5	93.1	92.6	92.8	87.4
Q3	85.7	84.3	84.5	87.4	86.6	84.8	85.3	85.7	94.2	93.3	93.5	92.8	93.1	88.1
Q4	86.3	85.8	85.8	88.5	87.5	85.6	87.0	86.9	94.4	94.3	94.3	92.8	93.5	89.0
2014 Q1	87.2	87.3	87.1	89.9	88.2	86.1	88.2	88.1	94.7	94.7	94.5	92.9	93.7	89.8
Q2	86.3	86.3	86.1	89.4	87.5	85.2	87.5	87.3	94.4	94.4	94.3	92.9	93.6	89.3
Q3	86.5	86.5	86.4	90.1	87.9	85.8	87.9	87.7	94.3	94.3	94.1	92.9	93.5	89.5
Q4	86.5	86.5	86.4	89.9	87.9	86.2	87.9	87.7	94.0	94.0	93.9	92.4	93.1	89.4
2015 Q1	87.3	87.3	87.2	90.2	88.4	86.5	88.4	88.2	94.1	94.1	93.9	92.6	93.3	89.8
Q2	87.4	87.4	87.3	90.2	88.4	85.9	88.4	88.3	94.2	94.2	94.1	93.0	93.6	90.0
Q3	87.2	87.2	87.2	90.7	89.1	86.6	89.1	88.7	94.3	94.3	94.2	93.3	93.8	90.3
Q4	87.5	87.5	87.5	90.9	89.4	86.7	89.4	88.9	94.6	94.6	94.5	93.6	94.1	90.6
2016 Q1	88.8	88.8	88.9	91.7	90.5	87.9	90.5	90.1	94.9	94.9	94.7	94.0	94.4	91.4
Q2	89.4	89.4	89.5	92.1	90.8	88.7	90.8	90.5	95.1	95.1	95.1	94.1	94.7	91.8
Q3	90.2	90.2	90.2	91.0	91.6	90.3	91.7	91.0	95.5	95.5	95.5	94.8	95.2	92.4
Q4	91.3	91.3	91.3	91.6	92.4	91.6	92.4	91.9	96.1	96.1	96.1	95.2	95.7	93.1
2017 Q1	92.4	92.4	92.4	91.4	92.5	92.2	92.5	92.3	96.7	96.7	96.6	96.0	96.4	93.6
Q2	92.8	92.8	92.8	91.7	92.8	92.6	92.8	92.7	97.1	97.1	97.1	96.6	96.9	94.1
Q3	94.2	94.2	94.2	92.8	94.2	93.8	94.2	94.0	97.4	97.4	97.4	97.0	97.2	95.0
Q4	95.0	95.0	95.0	93.1	94.8	94.8	94.8	94.6	97.6	97.6	97.6	97.1	97.4	95.5
2018 Q1	96.2	96.2	96.3	94.0	95.6	95.6	95.6	95.5	98.1	98.1	98.0	97.6	97.8	96.3
Q2	97.2	97.2	97.2	95.3	96.6	96.8	96.6	96.6	98.7	98.7	98.8	98.1	98.5	97.2
Q3	97.2	97.2	97.2	95.7	96.9	97.3	96.9	96.8	98.9	98.9	99.0	98.5	98.7	97.4
Q4	97.9	97.9	97.9	96.4	97.8	98.3	97.8	97.6	99.2	99.2	99.2	98.7	98.9	98.1
2019 Q1	98.9	98.9	98.9	97.9	98.7	98.8	98.7	98.6	99.5	99.5	99.5	99.2	99.3	98.8
Q2	100.3	100.3	100.3	100.2	100.3	100.4	100.3	100.3	100.3	100.0	100.0	99.9	100.0	100.2
Q3	100.7	100.7	100.8	101.7	100.7	100.8	100.7	100.9	100.3	100.3	100.3	100.6	100.4	100.8
Q4	100.0	100.0	100.0	100.2	100.3	100.0	100.3	100.2	100.3	100.3	100.3	100.3	100.3	100.2
2020 Q1	100.2	100.2	100.2	100.6	100.2	99.6	100.2	100.2	100.6	100.6	100.5	100.6	100.5	100.3
Q2	100.3	100.3	100.4	100.9	100.4	100.1	100.5	100.4	100.7	100.7	100.8	100.5	100.5	100.4
Q3	100.9	100.9	101.0	101.4	100.8	100.2	100.8	100.9	101.0	101.0	101.1	100.8	100.9	100.7
Q4	101.3	101.3	101.5	103.3	101.0	100.6	101.0	101.6	101.1	101.1	101.2	101.1	101.2	101.2
2021 Q1	102.5	102.5	102.7	104.1	101.6	101.6	101.6	102.5	101.6	101.6	101.7	101.8	101.7	101.9
Q2	104.7	104.7	104.8	104.3	103.1	103.8	103.1	104.0	102.5	102.5	102.6	102.7	102.7	103.3
Q3	108.0	108.0	108.1	105.5	104.3	105.8	104.3	106.0	104.4	104.5	104.6	104.8	104.7	105.2
Q4	110.6	110.7	110.9	107.1	105.7	107.6	105.7	108.0	106.0	106.1	106.2	106.5	106.4	107.0
2022 Q1	113.7	113.7	113.8	108.6	108.3	109.8	108.3	110.5	106.5	106.5	106.6	108.0	107.3	108.8
Q2	117.6	117.6	117.7	117.6	112.0	115.6	112.1	115.9	108.5	108.6	108.7	111.2	109.9	113.4
Q3	119.2	119.3	119.5	120.5	113.3	116.3	113.3	117.7	109.8	109.8	110.1	112.6	111.3	114.9
Q4	121.8	121.8	122.0	121.8	115.3	117.5	115.3	119.6	110.8	110.8	111.0	113.6	112.3	116.6
2023 Q1	125.2	125.1	125.3	124.2	117.7	119.1	117.7	122.2	111.3	111.3	111.5	115.0	113.2	118.0
Q2	126.8	126.8	126.9	126.1	119.5	121.0	119.5	124.0	111.9	111.9	112.1	115.4	113.7	119.6
Q3	127.3	127.3	127.4	125.2	119.7	121.4	119.7	123.9	112.5	112.5	112.7	116.0	114.4	119.5
Q4	126.4	126.5	126.5	123.8	119.1	121.1	119.1	123.0	112.7	112.7	112.9	115.4	114.1	118.4
2024 Q1	127.9	127.9	127.9	124.7	120.0	122.1	120.0	124.1	112.9	112.9	113.1	116.2	114.6	119.0
Q2	130.6	130.6	130.7	127.0	122.1	124.7	122.1	126.6	113.2	113.2	113.4	116.7	115.0	120.8

Users of these data should note that there may be instances where the period on period growths for the same component differ between tables. This is due to the growth rates being calculated at a higher precision than 1 dp within the production system. This accuracy is truncated when transferred into the published tables.

