

Statistical bulletin

# Producer price inflation, UK: September 2021 including services, July to September 2021

Changes in the prices of goods bought and sold by UK manufacturers, including price indices of materials and fuels purchased (input prices) and factory gate prices (output prices). Also including quarterly estimates monitoring the changes in prices charged for services provided to UK-based customers for a range of industries.



Contact:  
Emelia D'Silva-Parker  
[business.prices@ons.gov.uk](mailto:business.prices@ons.gov.uk)  
+44 1633 456907

Release date:  
20 October 2021

Next release:  
17 November 2021

## Table of contents

1. [Main points](#)
2. [Analysis](#)
3. [Producer price inflation data](#)
4. [Glossary](#)
5. [Measuring the data](#)
6. [Strengths and limitations](#)
7. [Related links](#)

# 1 . Main points

- The headline rate of output prices showed positive growth of 6.7% on the year to September 2021, up from 6.0% in August 2021.
- The headline rate of input prices showed positive growth of 11.4% on the year to September 2021, up from 11.2% in August 2021.
- Petroleum products and crude oil provided the largest upward contributions to the change in the annual rates of output and input inflation respectively.
- The annual rate for the Services Producer Price Index (SPPI) showed positive growth of 3.6% in Quarter 3 (Jul to Sep) 2021, up from 2.0% in Quarter 2 (Apr to Jun) 2021.
- Professional, scientific and technical services provided the largest upward contribution to the annual rate.

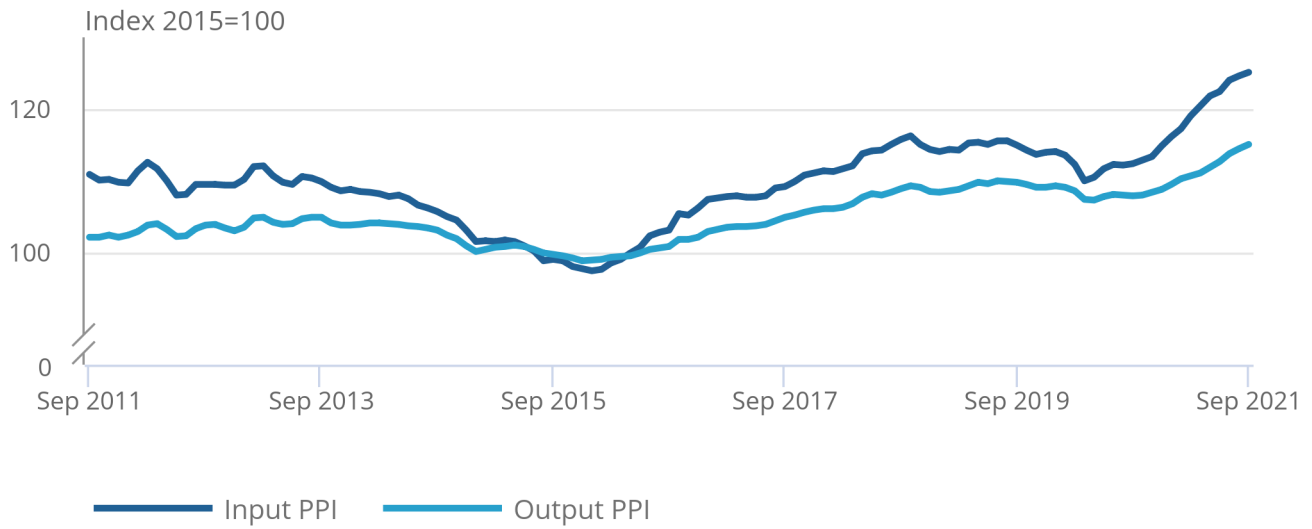
## 2 . Analysis

**Figure 1: Input PPI is more volatile over time than output inflation**

Input and output PPI, UK, September 2011 to September 2021

### Figure 1: Input PPI is more volatile over time than output inflation

Input and output PPI, UK, September 2011 to September 2021



Source: Office for National Statistics – Producer Price Index

On the month, the rate of output inflation was 0.5% in September 2021, down from 0.7% in August 2021 (Table 1).

Table 1: Output prices, index values, growth rates and percentage point change to the 12-month rate UK, September 2020 to September 2021

**All manufactured products (GB7S)**

	<b>PPI Index (2015=100)</b>	<b>1-month rate</b>	<b>12-month rate</b>	<b>Change in the 12-month rate (percentage points)</b>
<b>2020 Sept</b>	107.8	-0.1	-1.7	0.0
<b>Oct</b>	107.9	0.1	-1.4	0.3
<b>Nov</b>	108.3	0.4	-0.6	0.8
<b>Dec</b>	108.7	0.4	-0.3	0.3
<b>2021 Jan</b>	109.4	0.6	0.2	0.5
<b>Feb</b>	110.2	0.7	1.0	0.8
<b>Mar</b>	110.6	0.4	1.9	0.9
<b>Apr</b>	111.0	0.4	3.5	1.6
<b>May</b>	111.8	0.7	4.3	0.8
<b>June</b>	112.6	0.7	4.5	0.2
<b>July</b>	113.7	0.9	5.2	0.7
<b>Aug</b>	114.4	0.7	6.0	0.8
<b>Sept</b>	115.0	0.5	6.7	0.7

Source: Office for National Statistics – Producer price index

Notes

1. Rates may not correspond to index value changes because of rounding.

Transport equipment provided the largest upward contribution of 2.23 percentage points to the annual rate (Figure 2) but had negative annual price growth of 0.8% in September 2021 (Table 2).

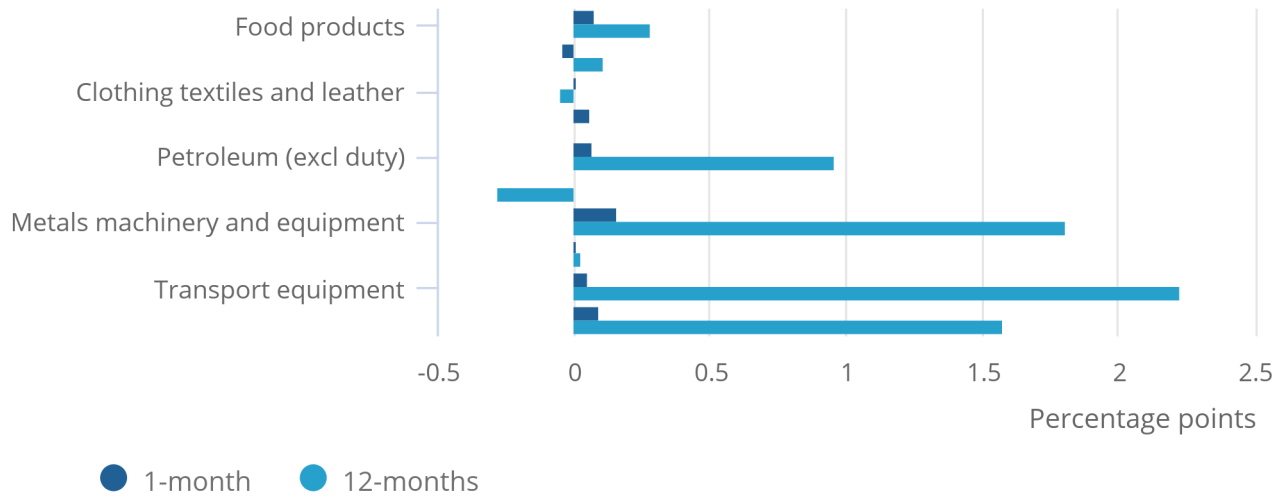
Despite showing negative annual growth, transport equipment provided an upward contribution to the annual rate because of the weight changes implemented as part of the move to annual chain-linking. More information is available in our [Chain-linking in business prices article](#). You can find out more about how these rates are calculated within the [contributions section of this bulletin](#).

## Figure 2: Transport equipment provided the largest upward contribution to the annual rate

Output prices contribution to 1-month and 12-month growth rate, UK, September 2021

### Figure 2: Transport equipment provided the largest upward contribution to the annual rate

Output prices contribution to 1-month and 12-month growth rate, UK, September 2021



Source: Office for National Statistics – Producer Price Index

Notes:

1. Contributions to the rate may not add up to the rate exactly because of rounding.

Table 2: Output prices, growth rates  
UK, September 2021

Product group	Percentage Change	
	1-month rate	12-month rate
Food products	0.3	2.6
Tobacco and alcohol (excl. duty)	-1.4	2.0
Clothing, textile and leather	0.5	1.8
Paper and printing	0.9	5.6
Petroleum products (excl. duty)	1.5	61.7
Chemical and pharmaceutical	0.1	9.3
Metal, machinery and equipment	1.0	10.9
Computer, electrical and optical	0.3	2.6
Transport equipment	0.4	-0.8
Other manufactured products	0.4	6.2
All manufacturing	0.5	6.7

Source: Office for National Statistics – Producer price index

The annual rate of output inflation increased by 0.7 percentage points from 6.0% in August 2021 to 6.7% in September 2021; this is the highest the annual rate of output inflation has been since November 2011.

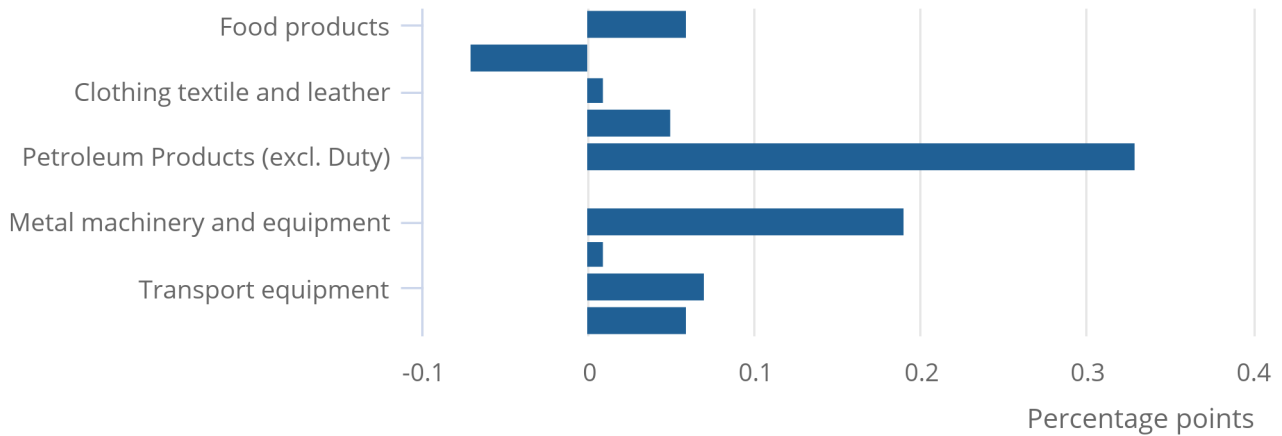
Of the 10 product groups, eight displayed upward contributions to the change in the rate, with petroleum products providing the largest, at 0.33 percentage points (Figure 3). The annual rate for petroleum products increased by 11.2 percentage points from 50.5% in August 2021 to 61.7% in September 2021. Annual growth rates for this product group were being driven by coke and refined petroleum products for domestic market.

**Figure 3: Petroleum made the largest upward contribution to the change in the annual rate**

Output PPI, contribution to change in the annual rate, UK, September 2021

Figure 3: Petroleum made the largest upward contribution to the change in the annual rate

Output PPI, contribution to change in the annual rate, UK, September 2021



Source: Office for National Statistics – Producer Price Index

Notes:

1. Contributions to the rate may not add up to the rate exactly because of rounding.

On the month, the rate of input inflation was 0.4% in September 2021, down from 0.5% in August 2021 (Table 3).

Table 3: Input prices, index values, growth rates and percentage point change to the 12-month rate  
UK, September 2020 to September 2021

**All materials and fuels purchased (GHIP)**

	<b>PPI Index (2015=100)</b>	<b>1-month rate</b>	<b>12-month rate</b>	<b>Change in the 12-month rate (percentage points)</b>
<b>2020 Sept</b>	112.3	0.2	-2.2	0.8
<b>Oct</b>	112.8	0.5	-1.1	1.1
<b>Nov</b>	113.3	0.4	-0.3	0.8
<b>Dec</b>	114.8	1.3	0.8	1.1
<b>2021 Jan</b>	116.1	1.1	1.9	1.1
<b>Feb</b>	117.2	0.9	3.2	1.3
<b>Mar</b>	119.0	1.6	6.1	2.9
<b>Apr</b>	120.4	1.1	9.6	3.5
<b>May</b>	121.8	1.1	10.3	0.7
<b>June</b>	122.4	0.5	9.6	-0.7
<b>July</b>	124.0	1.3	10.4	0.8
<b>Aug</b>	124.6	0.5	11.2	0.8
<b>Sept</b>	125.1	0.4	11.4	0.2

Source: Office for National Statistics – Producer price index

Notes

1. Rates may not correspond to index value changes because of rounding.

The annual rate of imported inputs was 4.2% in September 2021 (Table 4), down from 4.4% in August 2021.



Table 4: Imported materials and fuels purchased and sterling effective exchange rate, index values, growth rates and percentage point change to the 12-month rate  
UK, September 2020 to September 2021

	Imported materials and fuels purchased (GD74)			Change in the 12-month rate (percentage points)	Sterling effective exchange rate - month average (BK67)		
	PPI Index (2015=100)	1-month rate	12-month rate		Sterling Index (Jan 2005=100)	1-month rate	12-month rate
<b>2020 Sept</b>	115.1	0.8	-2.5	1.9	77.2	-1.2	0.8
<b>Oct</b>	115.1	0.0	-1.1	1.4	77.4	0.3	-1.0
<b>Nov</b>	114.6	-0.4	-0.7	0.4	78.2	1.0	-1.8
<b>Dec</b>	115.8	1.0	0.9	1.6	78.0	-0.3	-3.2
<b>2021 Jan</b>	116.2	0.4	0.9	0.0	79.0	1.3	-1.6
<b>Feb</b>	115.6	-0.5	0.1	-0.8	80.6	2.0	-0.1
<b>Mar</b>	117.0	1.2	0.7	0.6	81.7	1.4	6.4
<b>Apr</b>	118.4	1.2	5.4	4.7	81.3	-0.5	4.1
<b>May</b>	118.3	0.0	4.6	-0.8	82.0	0.9	6.4
<b>June</b>	118.7	0.3	4.4	-0.2	82.0	0.0	6.6
<b>July</b>	119.8	1.0	4.5	0.1	81.9	-0.1	6.5
<b>Aug</b>	119.3	-0.5	4.4	-0.1	82.0	0.1	5.0
<b>Sept</b>	119.9	0.5	4.2	-0.2	81.6	-0.5	5.7

Source: Office for National Statistics - Producer Price Index; Bank of England - Sterling Exchange Rate

Notes:

1. Rates may not correspond to index value changes because of rounding.
2. Total imports (GD74) represents roughly a fifth of overall materials and fuels (input prices) in terms of index weight.

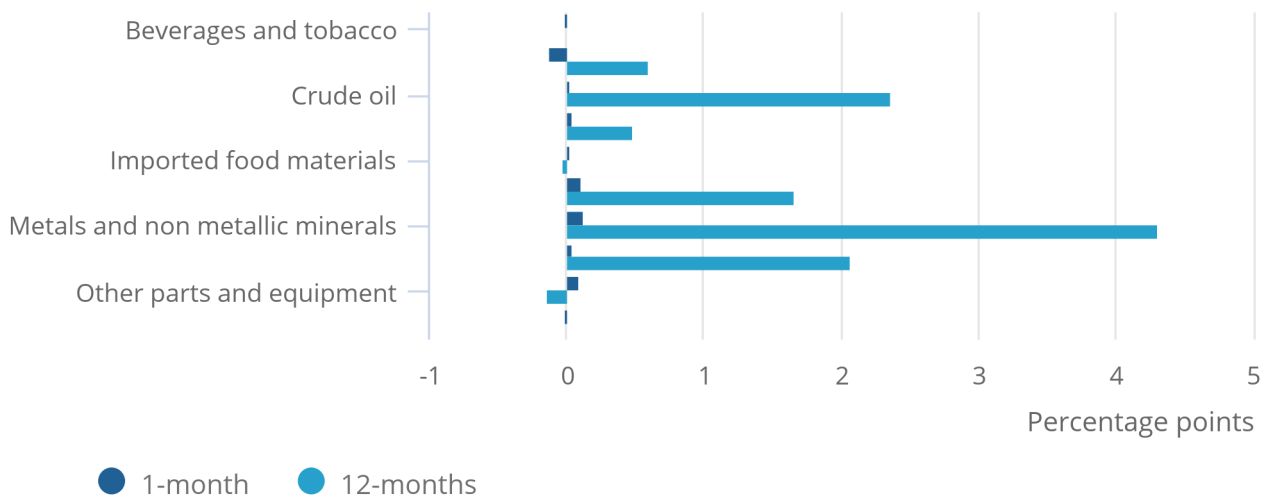
The largest upward contribution to the annual input inflation rate came from metals and non-metallic minerals, which contributed 4.32 percentage points (Figure 4) and had positive annual price growth of 19.8% in September 2021 (Table 5). This was mainly driven by basic iron and steel, and of ferro-alloys for domestic market.

**Figure 4: Metals and non-metallic minerals provided the largest upward contribution to the annual rate**

Input PPI, contribution to 1-month and 12-month growth rate, UK, September 2021

Figure 4: Metals and non-metallic minerals provided the largest upward contribution to the annual rate

Input PPI, contribution to 1-month and 12-month growth rate, UK, September 2021



Source: Office for National Statistics – Producer Price Index

Notes:

1. Contributions to the rate may not add up to the rate exactly because of rounding.

Table 5: Input prices, growth rates  
UK, September 2021

Product group	Percentage change	
	1-month rate	12-month rate
<b>Beverages and tobacco</b>	-0.7	1.2
<b>Fuel excluding Climate Change Levy</b>	-3.7	21.0
<b>Crude oil</b>	0.5	60.4
<b>Home food materials</b>	0.4	3.9
<b>Imported food materials</b>	1.5	2.1
<b>Other produced materials</b>	1.0	16.4
<b>Metals &amp; non-metallic minerals</b>	0.5	19.8
<b>Chemicals</b>	0.3	12.0
<b>Other parts and equipment</b>	0.4	-0.8
<b>Other inputs</b>	0.0	-0.9
<b>All manufacturing</b>	0.4	11.4

Source: Office for National Statistics – Producer price index

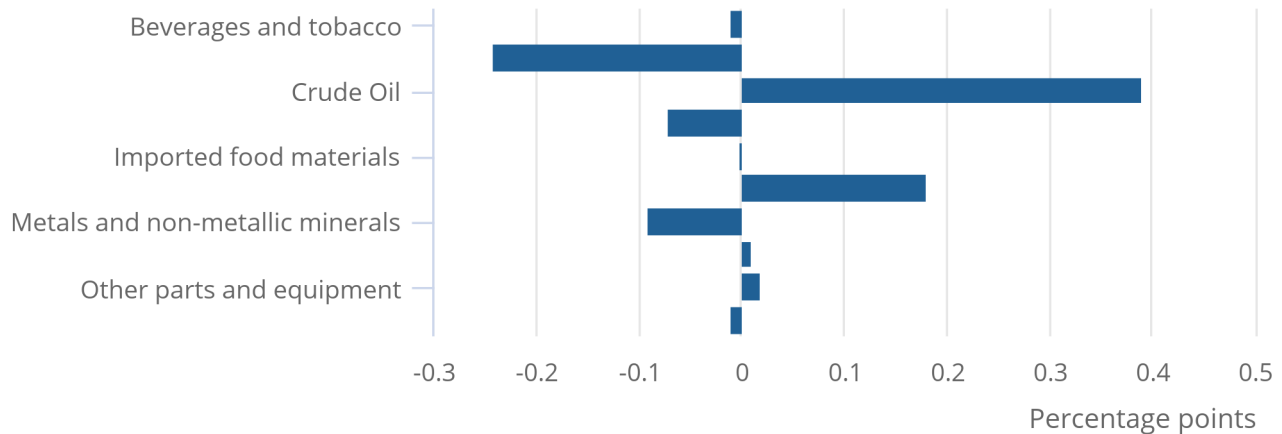
The annual input inflation rate increased by 0.2 percentage points from 11.2% in August 2021 to 11.4% in September 2021. Crude oil displayed the largest upward contribution to the change in the rate, at 0.39 percentage points (Figure 5), with annual price growth of 60.4% (Table 5). The annual rate for crude oil increased by 10.8 percentage points from 49.6% in August 2021; this is the first time the annual rate has picked up for this product group since April 2021.

## Figure 5: Crude oil provided the largest upward contribution to the change in the annual rate

Input PPI, contribution to change in the annual rate, UK, September 2021

### Figure 5: Crude oil provided the largest upward contribution to the change in the annual rate

Input PPI, contribution to change in the annual rate, UK, September 2021



Source: Office for National Statistics – Producer Price Index

#### Notes:

1. Contributions to the rate may not add up to the rate exactly because of rounding.

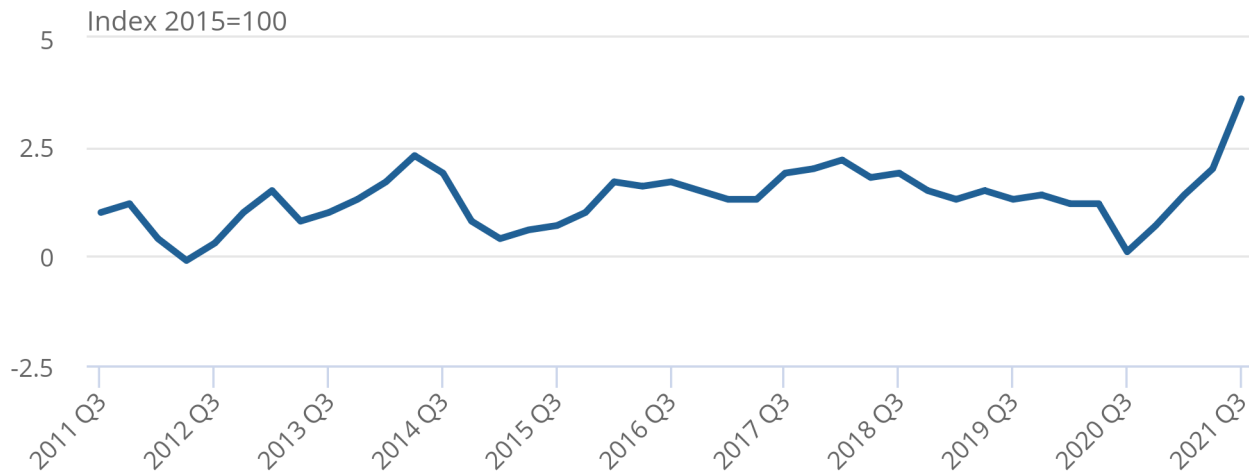
The annual rate of inflation for the Services Producer Price Index (SPPI) was 3.6% in Quarter 3 (Jul to Sept) 2021, up from 2.0% in Quarter 2 (Apr to Jun) 2021 (Figure 6). This is the highest the rate has been since September 2008, but is partly driven by a base effect as prices fell by 0.5% in quarter 3 2020.

**Figure 6: The annual rate of inflation for the SPPI rose in Quarter 3 (Jul to Sept) 2021**

SPPI, UK, Quarter 3 (Jul to Sept) 2011 to Quarter 3 (Jul to Sept) 2021

Figure 6: The annual rate of inflation for the SPPI rose in Quarter 3 (Jul to Sept) 2021

SPPI, UK, Quarter 3 (Jul to Sept) 2011 to Quarter 3 (Jul to Sept) 2021



Source: Office for National Statistics – Services Producer Price Index

The quarter-on-quarter growth of services sold by UK companies was 1.1% in Quarter 3 2021, up from 0.9% in Quarter 2 2021 (Table 6).

Table 6: Services Producer Prices  
UK, Quarter 3 (Jul to Sept) 2021

**UK**

**Percentage change**

	SPPI Index (2015=100)	1-Quarter 12-months		Change in the 12-month rate (percentage points)
<b>2020 Q3</b>	107.1	-0.5	0.1	-1.1
<b>Q4</b>	107.9	0.7	0.7	0.6
<b>2021 Q1</b>	108.9	0.9	1.4	0.7
<b>Q2</b>	109.9	0.9	2.0	0.6
<b>Q3</b>	111.0	1.1	3.6	1.6

Source: Office for National Statistics – Services Producer Price Index

Notes:



1. Q1 refers to Quarter 1 (Jan to Mar), Q2 refers to Quarter 2 (Apr to Jun), Q3 refers to Quarter 3 (Jul to Sep) and Q4 refers to Quarter 4 (Oct to Dec).

The largest upward contribution to the annual rate came from professional, scientific and technical services, at 5.00 percentage points (Figure 7), with an annual price increase of 5.1% (Table 7).

Transportation and storage services had the highest annual growth rate of any component of SPPI in Quarter 3 2021, of 5.8%, but provided a downward contribution of 2.08 percentage points to the annual rate. This was because of weight changes implemented as part of [Services Producer Price Inflation adjustments for coronavirus \(COVID-19\)](#).

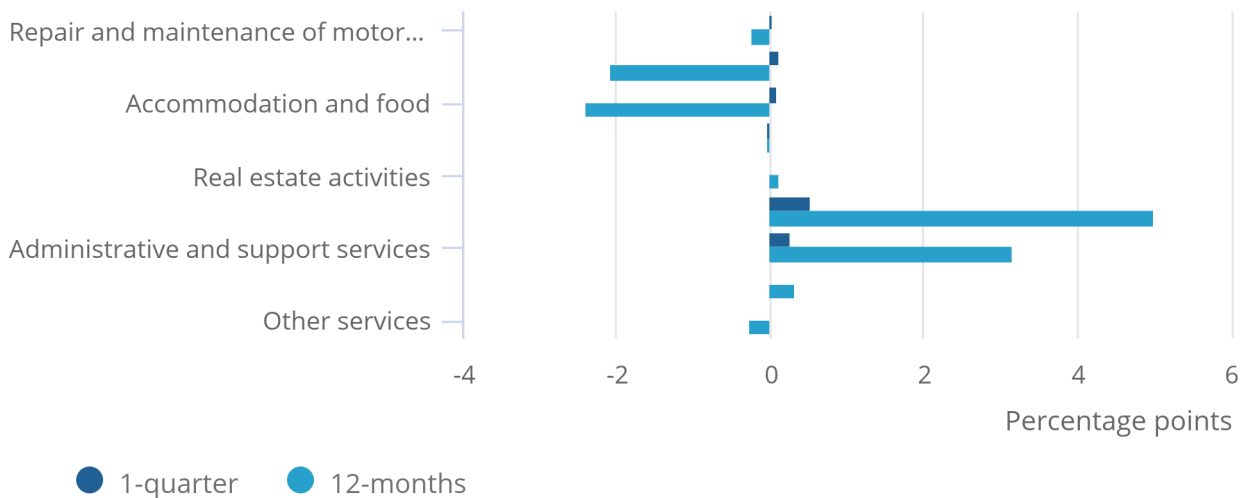
Professional, scientific and technical services also provided the largest upward contribution to the monthly rate, at 0.54 percentage points. Smaller upward contributions on the month were seen in administrative and support services (0.26pp), and transportation and storage services (0.11pp), with the latter driven by freight transport services by road.

**Figure 7: Professional, scientific and technical activities made the largest upward contribution to the SPPI annual rate**

SPPI, contribution to 1-quarter and 12-month growth rate, UK, Quarter 3 (Jul to Sept) 2021

Figure 7: Professional, scientific and technical activities made the largest upward contribution to the SPPI annual rate

SPPI, contribution to 1-quarter and 12-month growth rate, UK, Quarter 3 (Jul to Sept) 2021



Source: Office for National Statistics – Services Producer Price Index

Notes:

1. Contributions to the rate may not add up to the rate exactly because of rounding.

Table 7: SPPI, 1-quarter and 12-month percentage change  
Quarter 3 (Jul to Sept) 2021

Service group	Percentage change	
	1-quarter	12-months
Repair and maintenance of motor vehicles	1.7	3.3
Transportation and storage	0.6	5.8
Accommodation and food	1.2	5.1
Information and communication	-0.1	-0.4
Real estate activities	0.4	-0.3
Professional, scientific and technical activities	1.7	5.1
Administrative and support services	1.4	2.0
Education	0.0	0.0
Other services	0.0	3.8
<b>SPPI</b>	<b>1.1</b>	<b>3.6</b>

Source: Office for National Statistics – Services Producer Price Index

**Notes:**

1. The section level SPPIs are an aggregate of individual industry level SPPIs (excluding industries in Waste Supply, Sewerage and Management) published in the SPPI Statistical Bulletin. They do not provide full coverage of the service sector.

### 3 . Producer price inflation data

[Producer price inflation time series](#)

Dataset | Released 20 October 2021

A comprehensive selection of data on input and output indices. Contains producer price indices of materials and fuels purchased and output of manufacturing industry by broad sector.

[Output and input producer price inflation: contributions to the 12-month rates](#)

Dataset | Released 20 October 2021

Contributions to the 12-month rates of input and output producer price inflation by component and overall rates.

[Producer price inflation](#)

Dataset MM22 | Released 20 October 2021

UK price movement data at all manufacturing, aggregated industry and product group level. Data supplied from individual manufacturers, importers and exporters. Monthly, quarterly and annual data.

### 4 . Glossary



## Weight

This is the importance of the price of interest relative to other prices collected. With annual chain linking this is updated every year using business turnover data.

## Index value

Price level in a specific basket of goods.

## Annual growth rate

The annual inflation rate.

## Link factor

A smoothing factor applied to create a continuous series following a weights change.

## Contribution

A measure of influence the index has on the overall growth rate. This depends on both the magnitude of the weight and the inflation rate. A positive contribution is an index that is driving a change in the annual growth rate value. Where the contribution is positive but the growth is negative, this indicates that the index is reducing the annual growth rate (for example the growth rate would be higher if this index had a lower weight).

## Producer price inflation

Changes in the prices of goods bought and sold by UK manufacturers, including price indices of materials and fuels purchased (input prices) and factory gate prices (output prices).

## Output prices

The factory gate price (output price) is the amount received by UK producers for the goods that they sell to the domestic market. It includes the margin that businesses make on goods, in addition to costs such as labour, raw materials and energy, as well as interest on loans, site or building maintenance, or rent.

## Input prices

The input price measures the price of materials and fuels bought by UK manufacturers for processing. It includes materials and fuels that are both imported or sourced within the domestic market. It is not limited to materials used in the final product but includes what is required by businesses in their normal day-to-day running, such as fuels.

## Services producer price inflation

Quarterly estimates monitoring the changes in prices charged for services provided to UK-based customers for a range of industries.

# 5 . Measuring the data

Producer Price Inflation (PPI) uses contributions to identify how indices influence the overall inflation rate. This section gives additional information on the calculation and how to interpret it.

## Example scenarios

The following gives examples of how weight and inflation rate changes most commonly affect the contribution. In PPI, the weights usually have greater influence on the contribution as these tend to show greater change than the annual inflation rate.

- Decrease in weight and in inflation rate - contribution is negative
- Decrease in weight, increase in inflation rate - contribution is usually negative
- No change in weight or inflation rate - no change
- No change in weight, increase in inflation rate - no change
- Increase in weight, decrease in inflation rate - contribution is usually positive
- Increase in weight, no change in inflation rate - contribution is positive
- Increase in weight, increase in inflation rate - contribution is positive

Contributions are calculated using the following formula:

$$\frac{(weight \times index\ value \times link\ factor)\ for\ current\ year - (weight \times index\ value \times link\ factor)\ for\ previous\ year}{chain\ linked\ value\ for\ the\ overall\ index}$$

Quality and methodology information on strengths, limitations, appropriate uses, and how the data were created is available in the [Producer Price Index \(PPI\) Quality and Methodology Information report](#) and the [Services Producer Price Indices \(SPPI\) Quality and Methodology information report](#).

Other useful documentation for the Producer Price Index (PPI) and the Services Producer Price Index (SPPI) are:

1. [Producer price indices methods changes](#)
2. [Chain-linking in business prices](#)
3. [Producer price weight changes](#)
4. [Services producer price weight changes](#)
5. [Guidance on using indices in indexation clauses \(PDF, 197KB\)](#)
6. [PPI methods and guidance \(PDF, 1.14MB\)](#)
7. [SPPI user guidance and methodology article](#)
8. [PPI standard errors article](#)
9. [SPPI standard errors article](#)

## **Sterling effective exchange rate**

The sterling effective exchange rate measures changes in the strength of sterling relative to basket of other currencies. The sterling effective exchange rate is only indicative of the rates applied to producer prices. This is because the sterling effective exchange rate is a trade weighted index that represents all UK trade, whereas producer prices reflect transaction in the manufacture sector.

## **6 . Strengths and limitations**

### **Strengths**

- These data provide users with valuable insight into the changes in the process of goods and services bought and sold by UK manufacturers.
- Our data is very comprehensive, covering many products at a much greater level of detail than other surveys.

## **Limitations**

- Some products are produced by only a small number of manufacturers, meaning that there may not be enough manufacturers for a detailed and robust analysis and the sector may be volatile, requiring some estimation.
- The data can be revised for 12 months.
- The data for the latest two months of the Producer Price Index (PPI) and two quarters of the Services Producer Price Index (SPPI) are provisional.

## Coronavirus in September 2021

Response rates for the domestic PPI and Export Price Index (EPI) show an increase between August 2021 and September 2021, whereas the response rates for the Import Price Index (IPI) show a decrease between August 2021 and September 2021 (Table 8). The response rate for SPPI shows an increase between Quarter 2 (Apr to June) 2021 and Quarter 3 (July to Sept) 2021 (Table 9).

Table 8: Overall effective response rates at time of first publishing percentage  
September 2020 to September 2021

	<b>Weighted response</b>		
	<b>PPI (domestic)</b>	<b>IPI</b>	<b>EPI</b>
<b>September 2020</b>	77.6	74.0	68.7
<b>October 2020</b>	77.2	72.4	65.1
<b>November 2020</b>	77.5	74.7	68.4
<b>December 2020</b>	73.5	71.9	76.6
<b>January 2021</b>	74.8	70.7	58.7
<b>February 2021</b>	75.3	74.2	62.3
<b>March 2021</b>	73.9	75.5	65.4
<b>April 2021</b>	79.0	72.6	60.3
<b>May 2021</b>	75.5	77.1	62.7
<b>June 2021</b>	77.1	75.3	64.8
<b>July 2021</b>	71.1	68.2	70.7
<b>August 2021</b>	73.0	67.9	72.8
<b>September 2021</b>	73.3	67.1	73.8

Source: Office for National Statistics – Producer price index

### Notes

1. Effective response rates exclude items permanently not available for collection.

Table 9: Overall effective response rates at time of first publishing  
Quarter 3 (Jul to Sept) 2020 to Quarter 3 (Jul to Sept) 2021

### Weighted Response SPPI

**2020 Q3** 75.3

**Q4** 74.9

**2021 Q1** 73.2

**Q2** 71.0

**Q3** 74.2

Source: Office for National Statistics – Services Producer Price Index

#### Notes

1. Effective response rates exclude items permanently not available for collection.

## 7 . Related links

### [Consumer prices inflation, UK](#)

Bulletin | Released monthly

Price indices, percentage changes and weights for the different measures of consumer price inflation.

### [UK House Price Index](#)

Bulletin | Released monthly

Monthly house price inflation in the UK, calculated using data from HM Land Registry, Registers of Scotland, and Land and Property Services Northern Ireland.

### [Construction output in Great Britain: new orders and Construction Output Price Indices, April to June 2021](#)

Bulletin | Released 12 August

Short-term measures of output by the construction industry, contracts awarded for new construction work in Great Britain and a summary of the Construction Output Price Indices (OPIs) in the UK for Quarter 2 (Apr to June) 2021.

### [GDP monthly estimate, UK](#)

Bulletin | Released monthly

Gross domestic product (GDP) measures the value of goods and services produced in the UK.

## Links to additional ONS sources of coronavirus information

Various articles have been published that help describe the Office for National Statistics (ONS) response to how the coronavirus (COVID-19) might be seen in our estimates:

- [Coronavirus and the effects on UK prices](#) (published 6 May 2020)
- [Coronavirus and the impact on output in the UK economy, UK: August 2021](#) (published 13 October 2021)
- [Meeting the challenge of measuring the economy through the COVID-19 pandemic](#) (published 6 May 2020)
- [Coronavirus and the effects on UK GDP](#) (published 6 May 2020)
- [Real-time turning point indicators: a UK focus](#) (published 27 April 2020)
- [Communicating gross domestic product](#) (published 27 April 2020)

Our latest data and analysis on [the impact of coronavirus on the UK economy and population](#) are also available.

The ONS has released a [public statement on coronavirus](#) and the production of statistics. If you have any specific queries on this, you can email the [Media Relations Office](#).

## **Consultation on the Code of Practice for Statistics - proposed change to 9.30 am release practice**

On behalf of the UK Statistics Authority, the Office for Statistics Regulation (OSR) is conducting a consultation on the Code of Practise for Statistics, proposing changes to the 9:30am release practise. Please send comments by 21 December 2021 to: [regulation@statistics.gov.uk](mailto:regulation@statistics.gov.uk).

**Table 1: Output prices: summary (not seasonally adjusted) - CPA 2.1**

2015=100, CPA 2.1

	Manufactured Products for Domestic Market, excluding duty			Manufactured products excluding food beverages, tobacco, & petroleum products for domestic market			Coke and refined petroleum products, excluding duty			Food products, beverages and tobacco, excluding duty		
	Index (2015=100)	percentage change over		Index (2015=100)	percentage change over		Index (2015=100)	percentage change over		Index (2015=100)	percentage change over	
		1 mth	12 mths		1 mth	12 mths		1 mth	12 mths		1 mth	12 mths
	6150333333			6150333390			6140190000			6150888897		
	GB7S			GBBV			G6ST			GBA6		
2021 Mar	110.6	0.4	1.9	111.5	0.1	1.4	124.5	6.4	14.9	108.8	0.4	1.8
Apr	111.0r	0.4	3.5	112.1	0.5	1.9	125.9	1.1	51.9	108.8r	0.1	2.0
May	111.8r	0.7	4.3	112.8	0.7	2.3	131.1	4.1	68.4	109.2r	0.4	2.5
Jun	112.6	0.7	4.5	113.6	0.6	3.1	137.6	4.9	54.3	109.4	0.2	2.5
Jul	113.7	0.9	5.2	114.9	1.2	4.4	142.0	3.2	46.1	109.5	-	2.6
Aug	114.4p	0.7	6.0	116.0p	0.9	5.4	144.3p	1.6	50.5	109.5p	-	2.5
Sep	115.0p	0.5	6.7	116.6p	0.5	5.9	146.4p	1.5	61.7	109.6p	0.2	2.5

Source: Office for National Statistics

p = provisional  
r = revised

	Manufactured Products for Domestic Market, including duty			Food products, beverages and tobacco, including duty			Coke and refined petroleum products, including duty		
	Index (2015=100)	percentage change over		Index (2015=100)	percentage change over		Index (2015=100)	percentage change over	
		1 mth	12 mths		1 mth	12 mths		1 mth	12 mths
	6158333333			6158888897			6148190000		
	GD73			GBA7			G6SU		
2021 Mar	110.4	0.4	1.9	108.8r	0.3	1.7	110.1	2.9	6.0
Apr	110.9	0.4	3.3	109.0	0.2	2.0	110.7	0.6	18.9
May	111.7	0.7	4.1	109.4r	0.4	2.4	112.8	1.9	24.2
Jun	112.4	0.7	4.4	109.6	0.1	2.4	115.5	2.4	21.1
Jul	113.4	0.9	5.0	109.6	-	2.4	117.3	1.6	18.8
Aug	114.1p	0.6	5.8	109.6p	-	2.4	118.1p	0.7	20.2
Sep	114.7p	0.5	6.4	109.7p	0.2	2.4	119.4p	1.1	24.3

Source: Office for National Statistics

p = provisional  
r = revised

**Table 2: Gross sector input prices, including Climate Change Levy<sup>1</sup>: summary (not seasonally adjusted) - CPA 2.1**

2015=100, CPA 2.1

	All manufacturing (materials and fuel purchased)			All Manufacturing (materials and fuel purchased) excluding food, beverages, tobacco & petroleum			Materials purchased by manufacturing industry			Fuels purchased by manufacturing industry		
	Index (2015=100)	percentage change over		Index (2015=100)	percentage change over		Index (2015=100)	percentage change over		Index (2015=100)	percentage change over	
		1 mth	12 mths		1 mth	12 mths		1 mth	12 mths		1 mth	12 mths
	7390333333			7390333392			7390333397			7390333394		
	GHIP			GHIO			GHIK			GHIM		
2021 Mar	119.0	1.6	6.1	118.9	1.5	4.8	118.8r	1.6	6.0	125.2	0.8	9.2
Apr	120.4	1.1	9.6	120.4	1.2	6.8	120.3	1.2	9.5	123.1	-1.7	10.6
May	121.8	1.1	10.3	121.2r	0.7	7.3	121.7	1.2	10.1	124.2	0.9	17.5
Jun	122.4	0.5	9.6	121.9	0.6	7.8	122.4	0.6	9.5	121.0	-2.6	12.9
Jul	124.0	1.3	10.4	123.8	1.5	9.3	123.9	1.2	10.3	127.5	5.4	16.9
Aug	124.6p	0.5	11.2	125.0p	1.0	10.4	124.3p	0.4	10.8	135.0p	5.8	25.7
Sep	125.1p	0.4	11.4	125.5p	0.3	10.3	124.9p	0.5	11.1	130.0p	-3.7	19.3

Source: Office for National Statistics

<sup>1</sup> The Climate Change Levy was introduced in April 2001.

p = provisional  
r = revised



**Table 3: Output prices: Detailed by product (not seasonally adjusted) - CPA 2.1**

		2015=100, CPA 2.1									
							Percentage change 1 month		Percentage change 12 months		
		2021 May	2021 Jun	2021 Jul	2021 Aug	2021 Sep	2021 Aug	2021 Sep	2021 Aug	2021 Sep	
<b>Gross Sector</b>											
Output of manufactured products	GB7S 6158333333	111.8r	112.6	113.7	114.4p	115.0p	0.7	0.5	6.0	6.7	
All manufacturing, excluding food, beverages, tobacco and petroleum	GBBV 6150333390	112.8	113.6	114.9	116.0p	116.6p	0.9	0.5	5.4	5.9	
<hr/>											
Food products, beverages and tobacco, excluding duty	GBA6 6150888897	109.2r	109.4	109.5	109.5p	109.6p	-	0.2	2.5	2.5	
Food products	G6SI 6140100000	109.1r	109.2	109.2	109.1p	109.4p	-0.1	0.3	2.4	2.6	
Alcoholic beverages, excluding duty	G6SJ 6140110000	107.1	108.1	108.1	108.8p	108.1p	0.6	-0.7	3.0	1.8	
Soft drinks, mineral waters and other bottled waters	EVPU 6120110700	104.6	105.6	106.4	105.6p	106.2p	-0.7	0.5	1.2	1.6	
Textiles	G6SN 6140130000	107.1	107.5	108.1	108.2p	108.6p	0.1	0.4	1.7	2.0	
Wearing apparel	G6SO 6140140000	106.7	106.7	106.7	106.9p	108.4p	0.2	1.4	0.4	1.6	
Leather and related products	G6SP 6140150000	104.0	104.0	104.2	103.5p	103.5p	-0.6	-	0.2	0.5	
Wood and products of wood and cork, except furniture	G6SQ 6140160000	124.8	129.8r	136.5	144.8p	146.0p	6.1	0.8	27.4	28.1	
Paper and paper products	G6SR 6140170000	109.1r	111.7	113.0	114.0p	116.1p	0.9	1.8	7.6	9.1	
Printing and recording services	G6SS 6140180000	103.5	103.7	103.8	104.0p	103.9p	0.2	-	1.9	1.8	
Coke and refined petroleum products, excluding duty	G6ST 6140190000	131.1	137.6	142.0	144.3p	146.4p	1.6	1.5	50.5	61.7	
Chemicals and chemical products	G6SV 6140200000	118.6	119.9	121.7	123.6p	123.8p	1.6	0.1	12.2	12.2	
Basic pharmaceutical products and pharmaceutical preparations	G6SW 6140210000	105.7r	104.1r	104.5	104.9p	104.9p	0.4	-	-0.5	-0.5	
Rubber and plastic products	G6SX 6140220000	114.8r	115.7r	117.4	119.7p	120.1p	1.9	0.4	10.1	10.5	
Other non-metallic mineral products	G6SY 6140230000	113.8	114.1r	115.1	115.8p	116.5p	0.6	0.5	4.8	5.0	
Basic metals	G6SZ 6140240000	151.2	155.0r	161.7	165.4p	166.6p	2.3	0.7	32.0	33.2	
Fabricated metal products, except machinery and equipment	G6T3 6140250000	115.6	117.6	119.1	119.7p	121.0p	0.6	1.0	6.6	7.8	
Computer, electronic and optical products	G6T5 6140260000	105.5r	105.6r	105.7	105.9p	106.0p	0.2	-	-	0.1	
Electrical equipment	G6VF 6140270000	112.4r	113.7	114.1	114.3p	115.1p	0.2	0.7	5.1	5.5	
Machinery and equipment n.e.c.	G6VG 6140280000	108.6	109.3r	109.2	110.0p	111.4p	0.7	1.3	2.4	3.6	
Motor vehicles, trailers and semi-trailers	G6WH 6140290000	109.5	109.8	110.0	110.1p	110.9p	0.1	0.7	1.6	2.5	
Other transport equipment	G72N 6140300000	105.4	105.7	107.5	107.5p	107.5p	-	-	-5.2	-5.4	
Furniture	G75I 6140310000	109.3	109.7r	110.1	111.5p	111.6p	1.3	0.1	3.6	3.7	
Other manufactured goods	G776 6140320000	102.0	102.1	103.1	103.1p	103.1p	-	-	-1.5	-1.7	
Repair and installation services of machinery and equipment	G777 6140330000	112.1	109.5	109.6	109.5p	109.6p	-	-	-2.4	-2.6	

Source: Office for National Statistics

 p = provisional  
 r = revised

**Table 4: Input prices, excl Climate Change Levy<sup>1</sup>: materials and fuels purchased by selected industries (not seasonally adjusted) - CPA 2.1**

		2015=100, CPA 2.1									
		2021	2021	2021	2021	2021	Percentage change 1 month		Percentage change 12 months		
		May	Jun	Jul	Aug	Sep	2021 Aug	2021 Sep	2021 Aug	2021 Sep	
<b>Gross sector</b>											
Other mining & quarrying products	GHEA 7390080000	115.3	116.2	117.8	118.9p	118.8p	0.9	-0.1	8.4	8.5	
Manufacture of food products, beverages, tobacco	GHHV 7390888897	119.7	117.5r	116.7	116.6p	117.0p	-0.1	0.4	5.2	4.8	
Preserved meat & meat products	GHEF 7390101000	121.5	119.1	117.4	116.9p	117.8p	-0.4	0.8	4.5	4.5	
Fish, crustaceans, molluscs, fruit & vegetables	GHEH 7390333387	132.6	120.9r	117.9	117.0p	117.4p	-0.8	0.3	6.0	4.2	
Vegetable & animal oils & fats	GHEJ 7390104000	127.4r	129.8r	131.0	133.5p	133.6p	1.9	0.1	15.2	12.6	
Dairy products	GHEL 7390105000	127.4	124.3	122.3	122.0p	122.9p	-0.3	0.7	6.1	5.9	
Grain mill products, starches & starch products	GHEN 7390106000	119.7r	118.9r	118.2	118.2p	118.5p	-	0.2	5.7	5.2	
Bakery & farinaceous products	GHEP 7390107000	112.8	113.2	114.0	114.6p	114.5p	0.5	-	5.7	5.3	
Other food products	GHER 7390108000	110.6	110.7	111.3	111.5p	111.7p	0.2	0.2	3.3	3.2	
Animal feeds	GHET 7390109000	120.5r	119.5r	118.9	118.9p	119.3p	-	0.4	5.6	5.5	
Alcoholic Beverages	GHEV 7390333384	113.3	113.4	114.0	114.9p	114.6p	0.8	-0.3	5.8	5.1	
Soft drinks; mineral waters & other bottled waters	GHEX 7390110700	110.4	110.8	111.8	112.4p	112.7p	0.6	0.2	4.4	4.6	
Tobacco products	GHEZ 7390120000	123.9	122.4	121.2	121.3p	122.6p	-	1.1	7.9	7.6	
Manufacture of textiles & textile products; clothing	GHHW 7390888895	111.1	111.4r	112.5	113.1p	113.4p	0.5	0.3	3.4	3.4	
Textiles	GHFB 7390130000	112.2	112.5	113.7	114.4p	114.7p	0.6	0.2	4.7	4.6	
Wearing apparel	GHFD 7390140000	109.2	109.3	110.3	110.6p	111.0p	0.3	0.3	1.0	1.1	
Manufacture of leather & related products	GHFF 7390150000	110.6	110.8	111.7	111.8p	112.1p	0.1	0.2	3.2	3.3	
Manufacture of wood & wood products	GHFH 7390160000	128.4	132.0	138.2	143.7p	145.0p	4.0	0.9	23.2	23.9	
Manufacture of pulp, paper & paper products, recording media & printing services	GHHZ 7390888892	112.5r	114.1	115.9	117.6p	118.5p	1.5	0.7	8.8	9.3	
Pulp, paper & paper products	GHFJ 7390170000	114.7r	116.4	118.8	120.9p	121.8p	1.8	0.7	10.5	10.9	
Printing & recording services	GHFL 7390180000	109.6	111.0	112.1	113.3p	114.2p	1.1	0.8	6.6	7.2	
Manufacture of coke & refined petroleum products	GHFN 7390190000	137.5	147.3	153.4	148.7p	149.4p	-3.1	0.5	46.4	55.7	
Manufacture of chemicals, chemical products & man-made fibres	GHIB 7390888890	120.9	122.5	125.3	127.0p	127.1p	1.4	0.1	16.2	15.9	
Paints, varnishes & similar coatings, printing ink & mastics	GHFP 7390203000	122.0	123.2	125.3	126.6p	126.9p	1.1	0.2	13.1	12.9	
Soaps, detergents, cleaning & polishing preparations, perfumes & toilet preparations	GHFR 7390204000	113.6r	114.5	116.0	117.2p	117.6p	1.0	0.4	6.6	6.8	
Other chemical products	GHFT 7390205000	114.0r	114.9r	116.9	117.8p	118.1p	0.8	0.2	8.7	8.8	
Industrial gases; other basic inorganic chemicals; fertilisers & nitrogen compounds	GHFV 7390333378	119.6	120.5	123.1	127.0p	126.5p	3.2	-0.4	17.0	15.9	
Petrochemicals & man made fibres	GHFX 7390333377	125.3	127.9	131.4	132.8p	132.9p	1.1	0.1	22.0	21.8	
Dyes & pigments: pesticides & other agrochemical products	GHFZ 7390333376	120.9	121.9	123.8	125.3p	125.7p	1.2	0.3	11.6	11.7	
Manufacture of basic pharmaceutical products & pharmaceutical preparations	GHGB 7390210000	110.3r	110.0r	110.8	111.5p	111.7p	0.7	0.2	3.3	3.2	
Manufacture of rubber & plastic products	GHGD 7390220000	119.9	121.1r	123.5	125.0p	125.1p	1.2	0.1	13.6	13.3	
Manufacture of cement, lime & plaster	GHGF 7390333375	117.7	118.5	120.4	122.2p	122.5p	1.5	0.2	10.9	11.1	
Manufacture of glass, refractory, clay, other porcelain, ceramic stone products	GHGH 7390333374	114.8	115.8	117.4	118.6p	118.7p	1.0	0.1	8.2	8.2	
Manufacture of basic metals & fabricated products	GHIF 7390888884	140.0r	140.6	143.4	144.9p	145.3p	1.1	0.3	21.1	20.7	
Basic iron, steel & alloys: tubes, pipes, hollow profiles	GHGJ 7390333369	147.3	149.3	154.0	156.4p	157.0p	1.6	0.4	27.9	28.3	
Other basic metals & casting	GHGL 7390333368	160.4	157.3	157.6	157.3p	156.9p	-0.2	-0.3	26.3	23.1	
Weapons & ammunition	GHGN 7390254000	118.7	119.4	120.5	121.9p	122.5p	1.1	0.5	7.1	7.4	
Fabricated metal products, excluding machinery & equipment & weapons & ammunition	GHGP 7390333365	131.6r	133.1r	136.3	138.3p	138.9p	1.4	0.4	17.9	18.1	
Manufacture of computer, electronic & optical products, electrical equipment	GHIG 7390888883	117.7	118.0r	119.0	119.7p	120.0p	0.5	0.3	6.3	6.0	
Computer, electronic & optical products	GHGR 7390260000	115.4	115.4r	116.3	116.7p	116.9p	0.4	0.2	4.7	4.3	
Electrical equipment	GHGT 7390270000	120.3	121.0	122.2	123.0p	123.5p	0.7	0.4	8.0	8.0	
Manufacture of machinery & equipment n.e.c	GHGV 7390280000	122.6r	123.5	125.1	126.2p	126.8p	0.8	0.5	9.9	10.0	
Manufacturing of motor vehicles & other transport equipment	GHII 7390888881	118.9	119.2	120.5	121.1p	121.6p	0.6	0.4	6.5	6.3	
Motor vehicles, trailers & semi trailers	GHGX 7390290000	117.7	118.0	119.1	119.8p	120.3p	0.6	0.4	6.6	6.5	
Ships & boats	GHGZ 7390301000	119.6	121.0	124.5	125.9p	126.6p	1.1	0.5	10.8	11.1	
Aircraft & spacecraft & related machinery	GHHB 7390303000	122.1	122.1	123.5	124.0p	124.3p	0.4	0.3	5.7	5.2	
Other transport equipment	GHHD 7390333358	110.6r	111.2r	112.1	112.9p	113.8p	0.7	0.8	3.4	4.0	
Manufacture of other manufactured goods n.e.c	GHIJ 7390888880	124.8	126.2	129.5	132.1p	132.5p	2.0	0.4	16.0	15.7	
Furniture	GHHF 7390310000	124.1r	127.1	132.4	137.1p	137.9p	3.5	0.6	20.5	20.8	
Other manufacturing	GHHH 7390320000	125.3	125.5	127.1	128.0p	128.3p	0.7	0.2	12.4	11.7	
Repair of maintenance of ships & boats	GHHJ 7390331500	122.3	124.0r	127.2	129.3p	129.8p	1.6	0.5	14.3	15.0	
Repair & maintenance services of aircraft & spacecraft	GHHL 7390331600	107.4	106.2	106.6	106.7p	106.8p	0.1	-	-9.2	-9.4	
Other repair; installation	GHHN 7390333355	114.4r	115.4	116.7	118.0p	118.3p	1.1	0.3	8.6	9.1	

Source: Office for National Statistics

<sup>1</sup> Climate Change Levy is excluded from the detailed industry input index, (see background notes of the Statistical Bulletin for more detail).

p = provisional  
r = revised

**Table 5: Input prices: detailed by commodity (not seasonally adjusted) - CPA 2.1**

		2015=100, CPA 2.1									
							Percentage change 1 month		Percentage change 12 months		
		2021 May	2021 Jun	2021 Jul	2021 Aug	2021 Sep	2021 Aug	2021 Sep	2021 Aug	2021 Sep	
<b>Fuel excl. CCL</b>	FSQ3 7490222295	125.1	122.2	129.1	136.7p	131.6p	5.9	-3.7	27.3	21.0	
Mining of coal & lignite exc CCL	GHDW 7390050000	116.9	122.9	125.7	125.9p	126.1p	0.2	0.2	16.8	20.4	
Electricity excl. CCL	GHPH 7390351000	127.0	124.4	130.5	136.9p	131.9p	4.9	-3.6	24.8	19.2	
Gas excl. CCL	GHRH 7390444499	117.7	117.7	126.2	134.0p	132.2p	6.2	-1.3	42.9	38.9	
<b>Crude Oil</b>	FSQ4 7490444498	140.2	150.7	157.2	151.4p	152.2p	-3.7	0.5	49.6	60.4	
Domestic crude oil & metal ores	GGT3 7190222295	141.8	154.1	159.2	153.2p	153.9p	-3.8	0.5	51.8	64.1	
Imported crude oil & metal ores	GHBV 7290222295	137.4	144.9	153.8	148.2p	149.2p	-3.6	0.6	45.7	54.0	
<b>Home produced food:</b>	FSP7 7190351000	121.5	118.2r	116.3	115.7p	116.1p	-0.5	0.4	4.3	3.9	
Products of agriculture, hunting and related services	GGO7 7190010000	138.1	132.2	127.7	126.4p	127.4p	-1.0	0.8	5.6	5.3	
Fish & other fish products	GG88 7190030000	178.8r	133.7r	120.8	116.1p	115.0p	-3.9	-0.9	12.3	3.4	
Preserved meat and meat products	GH2M 7190101000	105.6r	105.9	105.3	105.0p	105.8p	-0.3	0.8	1.8	2.5	
Processed fish & fish products; fruit & vegetables	GH7R 7190333387	109.2	107.4	107.5	107.5p	107.5p	-	-	-	0.1	
Vegetable & animal oils and fats	GH7S 7190104000	121.3r	124.9r	125.3	127.7p	127.0p	1.9	-0.6	11.0	8.9	
Dairy products	GH8A 7190105000	118.5r	118.9r	119.0	119.1p	119.5p	0.1	0.4	5.0	4.4	
Grain mill products, starches and starch products	GH8B 7190106000	114.7	115.1	114.7	114.1p	113.8p	-0.5	-0.3	5.0	4.5	
Bakery and Farinaceous products	GH8C 7190107000	107.7	107.4	107.5	107.0p	107.2p	-0.5	0.2	0.5	0.6	
Other Food products	GH8L 7190108000	101.9	102.1	102.5	102.3p	102.4p	-0.2	0.1	0.6	1.0	
Prepared animal feeds	GH98 7190109000	120.1	120.9	122.1	122.5p	123.0p	0.3	0.4	7.1	7.4	
<b>Imported food materials</b>	FSP9 7490333354	118.3	117.8	118.9	118.2p	120.0p	-0.6	1.5	2.0	2.1	
Agricultural crop products	GHBQ 7290010000	112.4	109.5	109.3	109.4p	113.3p	0.1	3.5	4.5	5.6	
Fish & fish products	GHBS 7290030000	125.3	126.4	131.1	131.2p	138.2p	0.1	5.3	2.1	6.1	
Meat & meat products	GHBX 7290101000	116.5	117.8	119.3	118.0p	117.4p	-1.1	-0.5	0.6	-0.8	
Processed fish & fish products, fruit & vegetables	GHBY 7290333387	111.8r	112.4r	112.8	112.2p	112.7p	-0.5	0.4	-2.8	-2.6	
Vegetable & animal oils & fats	GHBZ 7290104000	157.3	157.5	159.1	161.5p	164.5p	1.5	1.8	24.1	19.0	
Dairy products	GHCA 7290105000	96.9	100.1	101.0	99.1p	97.5p	-1.9	-1.6	7.3	7.2	
Grain mill products & starches	GHCB 7290106000	125.6	125.8r	129.8	129.9p	130.7p	0.1	0.6	0.9	1.3	
Bakery & farinaceous products	GHCC 7290107000	120.2	119.6	119.4	119.6p	120.1p	0.2	0.4	-4.4	-4.8	
Other food products	GHCD 7290108000	126.7	126.9r	128.6	124.6p	125.0p	-3.1	0.3	-5.5	-6.1	
Prepared animal feeds	GHCE 7290109000	121.5	121.3	119.6	119.5p	119.9p	-0.2	0.4	-6.0	-6.1	
<b>Other home produced materials</b>	FSQ2 7490333353	116.6	120.0	123.1	125.4p	126.7p	1.8	1.0	15.0	16.4	
Forestry products	GGP2 7190020000	173.0	173.0	173.0	173.0p	173.0p	-	-	15.9	15.9	
Other mining & quarrying products exc agg	GH2L 7190080000	112.6	112.8	113.6	114.1p	114.3p	0.5	0.2	3.7	4.0	
Textiles	GHAH 7190130000	107.1	107.5	108.1	108.2p	108.6p	0.1	0.4	1.7	2.0	
Wearing Apparel	GHAJ 7190140000	106.7	106.7	106.7	106.9p	108.4p	0.2	1.4	0.4	1.6	

Leather and related products	GHAG	7190150000	104.0	104.0	104.2	103.5p	103.5p	-0.6	-	0.2	0.5
Wood and products of wood and cork, exc furniture	GHAH	7190160000	124.8	129.8r	136.5	144.8p	146.0p	6.1	0.8	27.4	28.1
Paper and paper products	GHAI	7190170000	109.1r	111.7	113.0	114.0p	116.1p	0.9	1.8	7.6	9.1
Coke & refined petroleum products	GHAK	7190190000	131.1	137.6	142.0	144.3p	146.4p	1.6	1.5	50.5	61.7
Water collection, treatment & supply	GHBP	7190360000	107.0	107.0	107.0	107.0p	107.0p	-	-	2.4	2.4

Source: Office for National Statistics

1 The Climate Change Levy was introduced in April 2001.

p = provisional

r = revised

**Table 5: Input prices: detailed by commodity (not seasonally adjusted) - CPA 2.1**

		2015=100, CPA 2.1									
							Percentage change 1 month		Percentage change 12 months		
		2021 May	2021 Jun	2021 Jul	2021 Aug	2021 Sep	2021 Aug	2021 Sep	2021 Aug	2021 Sep	
<b>Inputs of Metals and Non-Metallic Mineral products</b>	FSQ8 7390333351	142.3	142.9	145.7	146.9p	147.7p	0.8	0.5	20.3	19.8	
Cement, lime, plaster and articles of concrete, cement & plaster	GHGF 7390333375	117.7	118.5	120.4	122.2p	122.5p	1.5	0.2	10.9	11.1	
Glass, refractory clay, porcelain, ceramic and stone products	GHGH 7390333374	114.8	115.8	117.4	118.6p	118.7p	1.0	0.1	8.2	8.2	
Basic iron, steel & alloys, tubes, pipes, hollow profiles and fittings	GHGJ 7390333369	147.3	149.3	154.0	156.4p	157.0p	1.6	0.4	27.9	28.3	
Other basic metals & casting	GHGL 7390333368	160.4	157.3	157.6	157.3p	156.9p	-0.2	-0.3	26.3	23.1	
Weapons & ammunition	GHGN 7390254000	118.7	119.4	120.5	121.9p	122.5p	1.1	0.5	7.1	7.4	
Fabricated metal products excluding weapons & ammunition	GHGP 7390333365	131.6r	133.1r	136.3	138.3p	138.9p	1.4	0.4	17.9	18.1	
<b>Inputs of Chemicals</b>	FSQ7 7490333352	118.2	119.3r	121.3	122.7p	123.0p	1.1	0.3	12.0	12.0	
Paints, varnishes & coatings, printing inks & other mastics	GHFP 7390203000	122.0	123.2	125.3	126.6p	126.9p	1.1	0.2	13.1	12.9	
Soap, detergents, cleaning & polishing preparations, perfumes & toilet preparations	GHFR 7390204000	113.6r	114.5	116.0	117.2p	117.6p	1.0	0.4	6.6	6.8	
Other chemical products	GHFT 7390205000	114.0r	114.9r	116.9	117.8p	118.1p	0.8	0.2	8.7	8.8	
Industrial gases, inorganic chemicals, fertilisers & nitrogen compounds	GHFV 7390333378	119.6	120.5	123.1	127.0p	126.5p	3.2	-0.4	17.0	15.9	
Petrochemicals	GHFX 7390333377	125.3	127.9	131.4	132.8p	132.9p	1.1	0.1	22.0	21.8	
Dyes & pigments; pesticides & other agro-chemical products	GHFZ 7390333376	120.9	121.9	123.8	125.3p	125.7p	1.2	0.3	11.6	11.7	
Basic pharmaceutical products & pharmaceutical preparations	GHGB 7390210000	110.3r	110.0r	110.8	111.5p	111.7p	0.7	0.2	3.3	3.2	
Rubber & plastic products	GHGD 7390220000	119.9	121.1r	123.5	125.0p	125.1p	1.2	0.1	13.6	13.3	
<b>Other parts &amp; equipment</b>	FSQ9 7490333349	108.5	108.8	109.0	109.4p	109.9p	0.4	0.4	-0.9	-0.8	
Computer, electronic & optical products	GHGR 7390260000	115.4	115.4r	116.3	116.7p	116.9p	0.4	0.2	4.7	4.3	
Electrical equipment	GHGT 7390270000	120.3	121.0	122.2	123.0p	123.5p	0.7	0.4	8.0	8.0	
Machinery & equipment n.e.c	GHGV 7390280000	122.6r	123.5	125.1	126.2p	126.8p	0.8	0.5	9.9	10.0	
Motor vehicles, trailers & semi-trailers	GHGX 7390290000	117.7	118.0	119.1	119.8p	120.3p	0.6	0.4	6.6	6.5	
Ships & boats	GHGZ 7390301000	119.6	121.0	124.5	125.9p	126.6p	1.1	0.5	10.8	11.1	
Aircraft, spacecraft & related machinery	GHHB 7390303000	122.1	122.1	123.5	124.0p	124.3p	0.4	0.3	5.7	5.2	
Other transport equipment	GHHD 7390333358	110.6r	111.2r	112.1	112.9p	113.8p	0.7	0.8	3.4	4.0	
<b>Other Inputs</b>	FSQ6 7490111196	108.9	108.0	108.2	108.2p	108.2p	-	-	-0.7	-0.9	
Printing & recording services	GHFL 7390180000	109.6	111.0	112.1	113.3p	114.2p	1.1	0.8	6.6	7.2	
Furniture	GHHF 7390310000	124.1r	127.1	132.4	137.1p	137.9p	3.5	0.6	20.5	20.8	
Other manufactured goods n.e.c	GHHH 7390320000	125.3	125.5	127.1	128.0p	128.3p	0.7	0.2	12.4	11.7	
Repair & maintenance of ships and boats	GHHJ 7390331500	122.3	124.0r	127.2	129.3p	129.8p	1.6	0.5	14.3	15.0	
Repair & maintenance of aircraft and spaceships	GHHL 7390331600	107.4	106.2	106.6	106.7p	106.8p	0.1	-	-9.2	-9.4	
Rest of repair and installation	GHHN 7390333355	114.4r	115.4	116.7	118.0p	118.3p	1.1	0.3	8.6	9.1	
<b>Imported materials:</b>											
Total Imports	GD74 8170111199	118.3r	118.7	119.8	119.3p	119.9p	-0.5	0.5	4.4	4.2	

Source: Office for National Statistics

1 The Climate Change Levy was introduced in April 2001.

 p = provisional  
 r = revised

**Table 6R: Output prices: revisions (not seasonally adjusted) - CPA 2.1**

2015=100, CPA 2.1

	Output of manufactured products			All manufacturing excluding food, beverages, tobacco and petroleum		
	Index (2015=100)	percentage change over		Index (2015=100)	percentage change over	
		1 mth	12 mths		1 mth	12 mths
	6150333333			6150333390		
	GB7S			GBBV		
2020 Sep	-	-	-	-	-	-
Oct	-	-	-	-	-	-
Nov	-	-	-	-	-	-
Dec	-	-	-	-	-	-
2021 Jan	-	-	-	-	-	-
Feb	-	-	-	-	-	-
Mar	-	-	-	-	-	-
Apr	-0.1	-	-	-	-	-
May	-0.1	-	-	-	-	-
Jun	-	-	-	-	-0.1	-
Jul	0.1	0.1	0.1	0.2	0.2	0.2
Aug	-	-	0.1	0.1	-0.1	0.1

Source: Office for National Statistics

Please see Statistical Bulletin section entitled "Revisions" for further information