

Statistical bulletin

Employment in the UK: January 2020

Estimates of employment, unemployment and economic inactivity for the UK.



Contact:
Bob Watson
labour.supply@ons.gov.uk
+44 (0)1633 455070

Release date:
21 January 2020

Next release:
18 February 2020

Table of contents

1. [Other pages in this release](#)
2. [Main points for September to November 2019](#)
3. [Employment](#)
4. [Unemployment](#)
5. [Economic inactivity](#)
6. [Employment data](#)
7. [Glossary](#)
8. [Measuring the data](#)
9. [Strengths and limitations](#)
10. [Related links](#)

1 . Other pages in this release

Other commentary from the latest labour market data can be found on the following pages:

- [Labour market overview](#)
- [Average weekly earnings in Great Britain](#)
- [Vacancies and jobs](#)

2 . Main points for September to November 2019

- The UK employment rate was estimated at a record high of 76.3%, 0.6 percentage points higher than a year earlier and 0.5 percentage points up on the previous quarter.
- The UK unemployment rate was estimated at 3.8%, 0.2 percentage points lower than a year earlier but largely unchanged on the previous quarter.
- The UK economic inactivity rate was estimated at a record low of 20.6%, 0.4 percentage points lower than the previous year and the previous quarter.

The data in this bulletin come from the Labour Force Survey, a survey of households. It is not practical to survey every household each quarter, so these statistics are estimates based on a large sample.

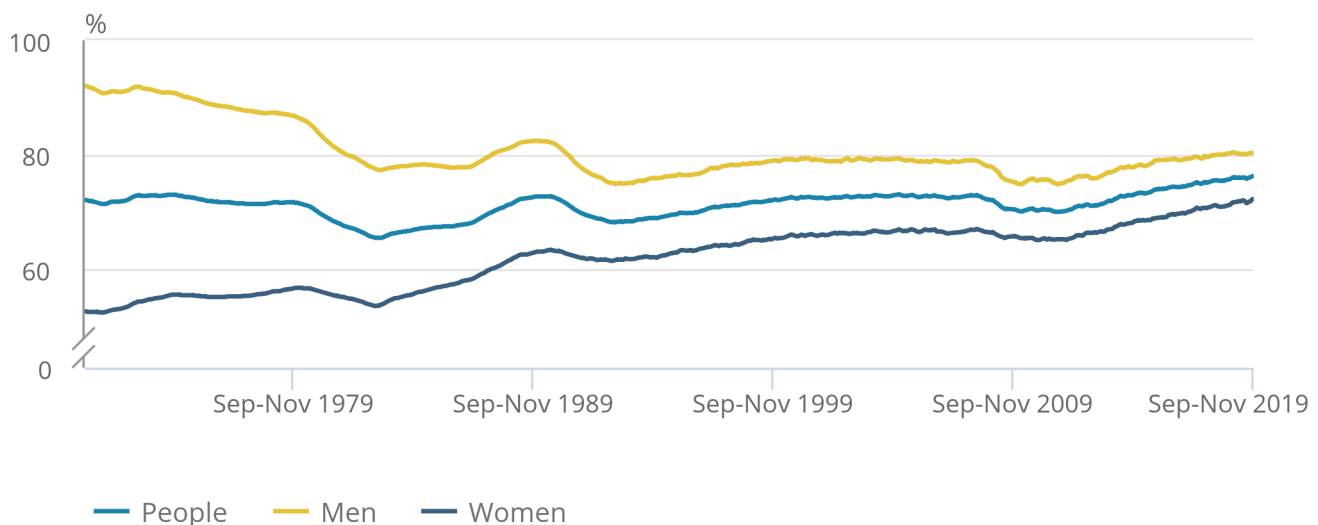
3 . Employment

Figure 1: The employment rate for all people increased 0.6 percentage points on the year to a record high of 76.3%

UK employment rates (aged 16 to 64 years), seasonally adjusted, January to March 1971 to September to November 2019

Figure 1: The employment rate for all people increased 0.6 percentage points on the year to a record high of 76.3%

UK employment rates (aged 16 to 64 years), seasonally adjusted, January to March 1971 to September to November 2019



Source: Office for National Statistics – Labour Force Survey

[Employment](#) measures the number of people aged 16 years and over in paid work. The employment rate is the proportion of people aged between 16 and 64 years who are in paid work.

Estimated employment rates for people aged between 16 and 64 years have generally been increasing since early 2012 but this increase has slowed in recent periods (as seen in Figure 1). While the employment rate estimates for men have levelled off, the estimates for the women's employment rate have continued to rise. For September to November 2019:

- the estimated employment rate for all people was a record high of 76.3%; this is 0.6 percentage points up on the year and 0.5 percentage points up on the quarter
- the estimated employment rate for men was 80.4%; this is 0.1 percentage points up on the year and 0.2 percentage points up on the quarter
- the estimated employment rate for women was a record high of 72.3%; this is 1.1 percentage points up on the year and a joint record high of 0.7 percentage points up on the quarter

The increase in the employment rate for women in recent years is partly a result of changes to the State Pension age for women, resulting in fewer women retiring between the ages of 60 and 65 years.

Estimates for September to November 2019 show a record 32.90 million people aged 16 years and over in employment, 359,000 more than a year earlier. This annual increase was mainly driven by full-time workers (up 349,000 on the year to a record high of 24.36 million) and women (up 317,000 on the year to a record high of 15.58 million). The annual increase in women working full-time (up 245,000 to a record high of 9.26 million) was the largest since February to April 2017.

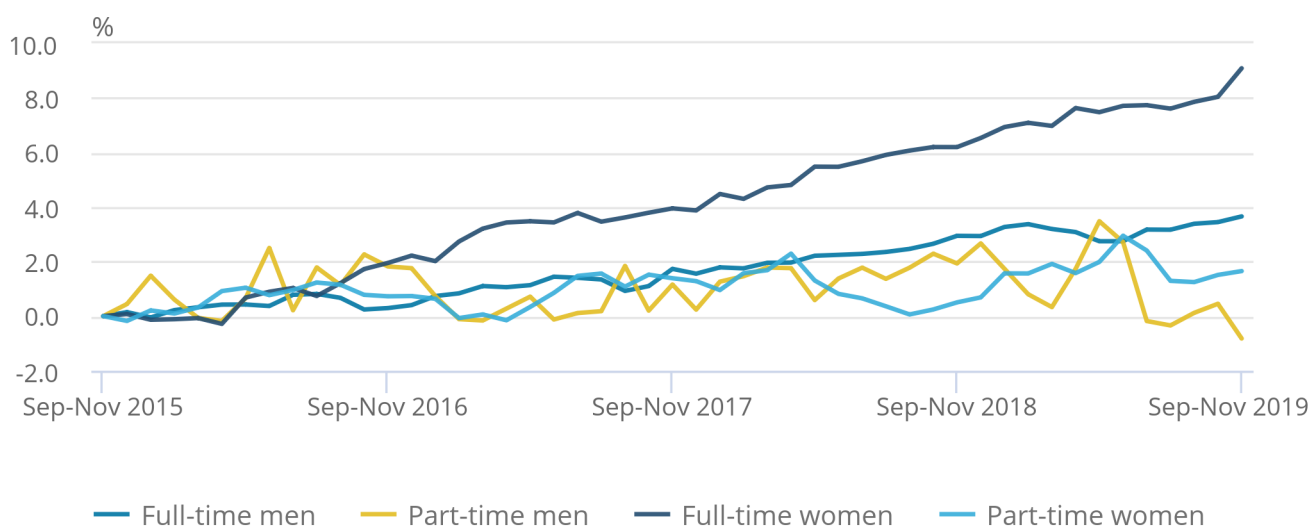
There was a 208,000 increase in employment on the quarter. This was, again, mainly driven by quarterly increases for full-time workers (up 197,000; the largest increase since September to November 2015) and for women (up 148,000; the largest increase since February to April 2014). The quarterly increase in women working full-time (up 126,000) was the largest since November 2012 to January 2013.

Figure 2: The number of women working full-time has increased by 9.1% since September to November 2015; more than double the percentage increase for men

UK employment percentage growth for full-time and part-time men and women (aged 16 years and over), seasonally adjusted, September to November 2015 to September to November 2019

Figure 2: The number of women working full-time has increased by 9.1% since September to November 2015; more than double the percentage increase for men

UK employment percentage growth for full-time and part-time men and women (aged 16 years and over), seasonally adjusted, September to November 2015 to September to November 2019



Source: Office for National Statistics – Labour Force Survey

Increases in the number of full-time workers have been the main driver of increases in employment in recent years, while the number of part-time workers has been relatively flat in comparison (as seen in Figure 2).

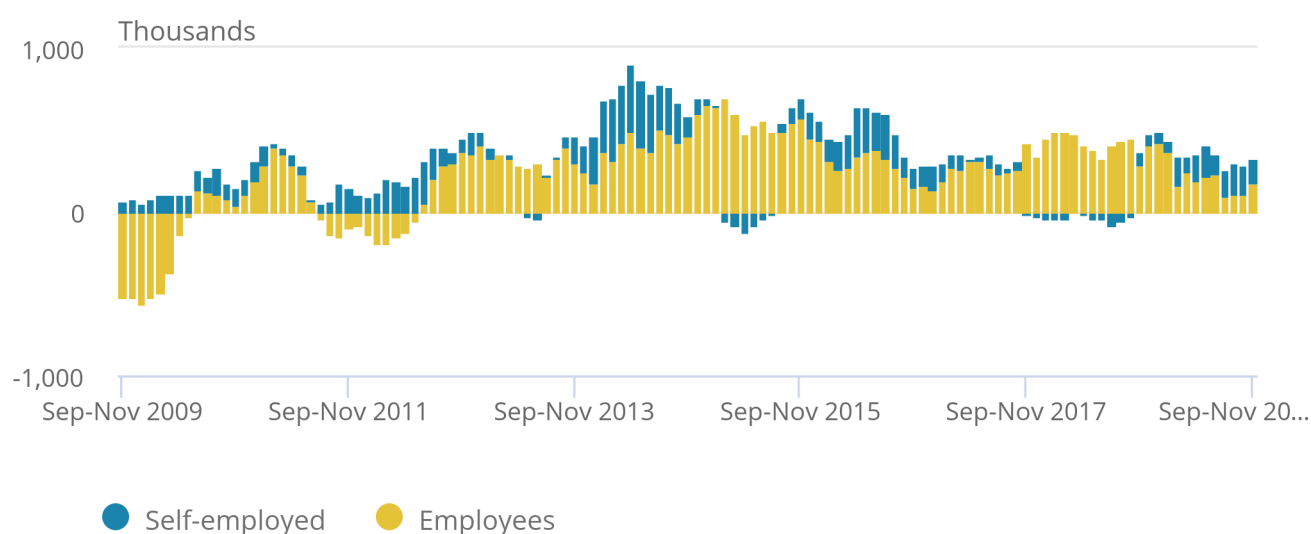
The rate of growth for women working full-time has been consistently higher than for men over the last few years, with women being the main drivers of the strong increase in full-time employment. For September to November 2019, the number of women working full-time increased by 9.1% compared with the same three months in 2015, while the number of men increased by 3.7% over the same period. In comparison, the number of women working part-time increased by 1.7% and the number of men working part-time decreased by 0.8%.

Figure 3: Over the last year the number of employees increased by 179,000 and the number of self-employed people increased by 145,000

UK employees and self-employed people annual changes (aged 16 years and over), seasonally adjusted, September to November 2009 to September to November 2019

Figure 3: Over the last year the number of employees increased by 179,000 and the number of self-employed people increased by 145,000

UK employees and self-employed people annual changes (aged 16 years and over), seasonally adjusted, September to November 2009 to September to November 2019



Source: Office for National Statistics – Labour Force Survey

Looking at the estimates for September to November 2019 by type of employment:

- there were a joint record 27.71 million paid employees (84.2% of all people in employment), 179,000 more than a year earlier
- there were a record 5.00 million self-employed people (15.2% of all people in employment), 145,000 more than a year earlier

Since the latter half of 2012, the annual increases for employees have generally been greater than for the self-employed (Figure 3). In recent periods this had reversed, but in September to November 2019 the increase for employees went back to being greater than the increase for the self-employed.

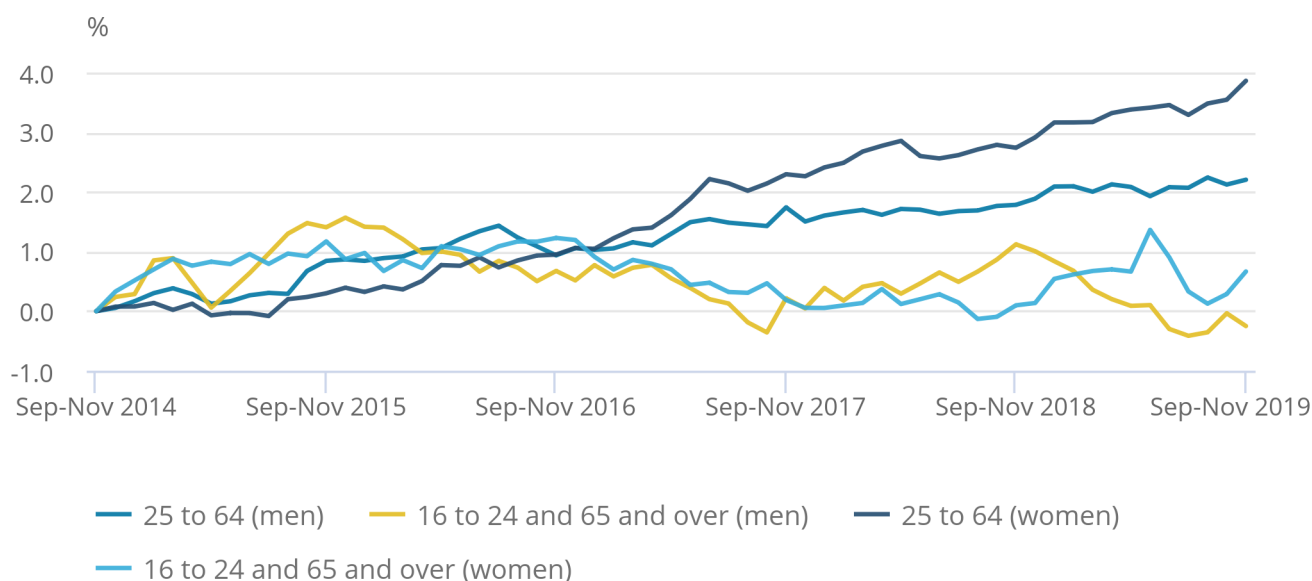
These estimates for paid employees and self-employed people make up over 99% of all people in employment in the UK. The total employment figure also includes two other minor categories as explained in the [Guide to labour market statistics](#).

Figure 4: Women aged 25 to 64 years have been the main drivers of the increase in the employment rate over the last five years

UK employment rates change by age and sex, seasonally adjusted, September to November 2014 to September to November 2019

Figure 4: Women aged 25 to 64 years have been the main drivers of the increase in the employment rate over the last five years

UK employment rates change by age and sex, seasonally adjusted, September to November 2014 to September to November 2019



Source: Office for National Statistics – Labour Force Survey

Figure 4 shows employment rate changes between September to November 2014 and September to November 2019 for younger and older people combined (those aged 16 to 24 years and those aged 65 years and over) compared with those aged 25 to 64 years, broken down by sex. It can be seen that those aged 25 to 64 years have been driving increases in employment rates in recent years, with the largest increase seen for women. In comparison, employment rates have been relatively flat for younger and older people over the last five years. This is partly because of the different way in which full-time students interact with the labour market.

Those aged 25 to 64 years have been driving increases in employment rates in recent years, with the largest increase seen for women. In comparison, employment rates have been relatively flat for younger and older people over the last five years. This is partly because of the different way in which full-time students interact with the labour market and because of changes to the State Pension age for women, resulting in fewer women retiring between the ages of 60 and 65 years.

Hours worked

Since estimates began in 1971, [total hours worked](#) by women have generally increased, reflecting increases in both the employment rate for women and the UK population. In contrast, total hours worked by men have been relatively stable, with the level in September to November 2019 being close to the level in January to March 1971 (626 and 628 million hours, respectively). This is because falls in the employment rate for men, and increases in the share of part-time working, have been roughly offset by population increases.

Between September to November 2018 and September to November 2019, total actual weekly hours worked in the UK increased by 1.4% (to 1.05 billion hours), while average actual weekly hours increased by 0.2% (to 32.0 hours). Therefore, the annual increase in total hours was mainly driven by the 1.1% increase in employment over the last year.

In September to November 2019, men worked an average of 36.2 hours per week, a decrease of 0.1 hours compared with a year earlier. In contrast, the average actual weekly hours for women increased by 0.4 hours over the year, to 27.4 hours. This increase in average hours for women, combined with the increase in employment, has resulted in the largest annual increase in total actual weekly hours worked by women since April to June 2014, to reach a record high of 427.69 million hours.

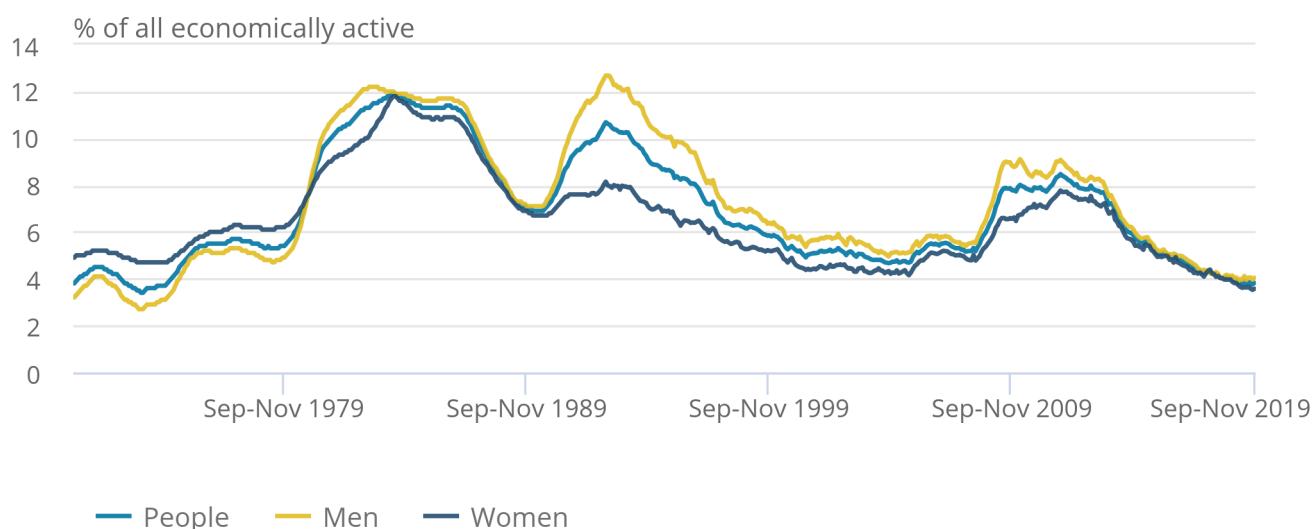
4 . Unemployment

Figure 5: Unemployment rates have generally been falling for the last six years

UK unemployment rates (aged 16 years and over), seasonally adjusted, January to March 1971 to September to November 2019

Figure 5: Unemployment rates have generally been falling for the last six years

UK unemployment rates (aged 16 years and over), seasonally adjusted, January to March 1971 to September to November 2019



Source: Office for National Statistics – Labour Force Survey

[Unemployment](#) measures people without a job who have been actively seeking work within the last four weeks and are available to start work within the next two weeks. The unemployment rate is not the proportion of the total population who are unemployed. It is the proportion of the economically active population (those in work plus those seeking and available to work) who are unemployed.

Estimated unemployment rates for both men and women aged 16 years and over have generally been falling since late 2013 but have levelled off in recent periods (as seen in Figure 5).

For September to November 2019:

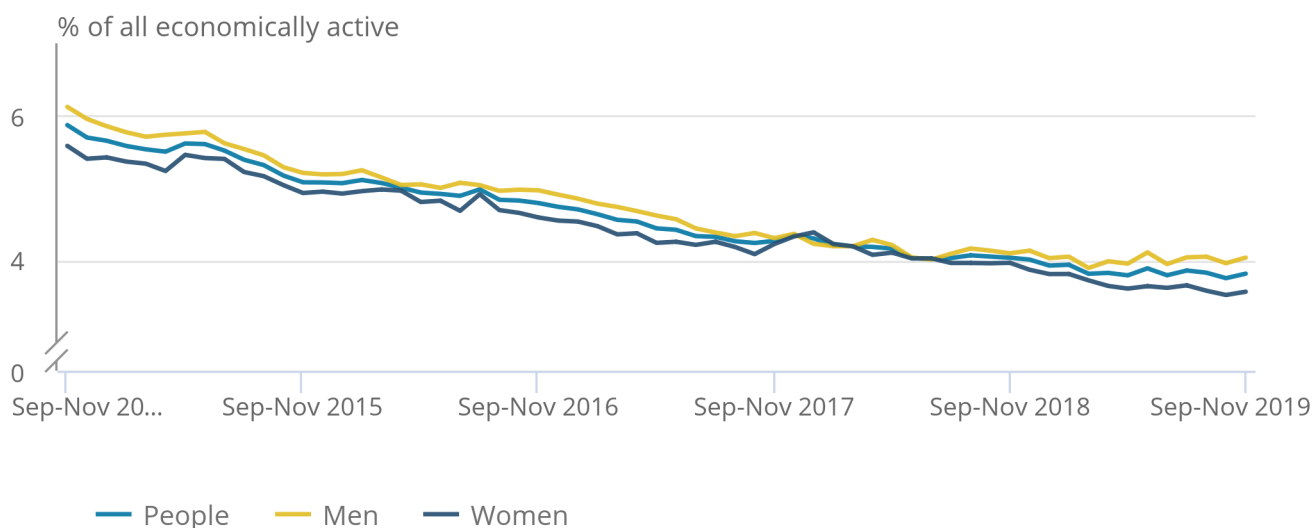
- the estimated UK unemployment rate for all people was 3.8%, 0.2 percentage points lower than a year earlier but largely unchanged on the previous quarter
- the estimated UK unemployment rate for men was 4.0%, 0.1 percentage points lower than a year earlier but largely unchanged on the previous quarter
- the estimated UK unemployment rate for women was 3.6%, down 0.4 percentage points on the year and down 0.1 percentage points on the quarter

Figure 6: The steady fall in unemployment rates for men and women over the last few years has slowed in recent periods

UK unemployment rates (aged 16 years and over), seasonally adjusted, September to November 2014 to September to November 2019

Figure 6: The steady fall in unemployment rates for men and women over the last few years has slowed in recent periods

UK unemployment rates (aged 16 years and over), seasonally adjusted, September to November 2014 to September to November 2019



Source: Office for National Statistics – Labour Force Survey

Between September to November 2014 and September to November 2019 (Figure 6):

- the estimated unemployment rate for all people fell from 5.9% to 3.8%
- the estimated unemployment rate for men fell from 6.1% to 4.0%
- the estimated unemployment rate for women fell from 5.6% to 3.6%

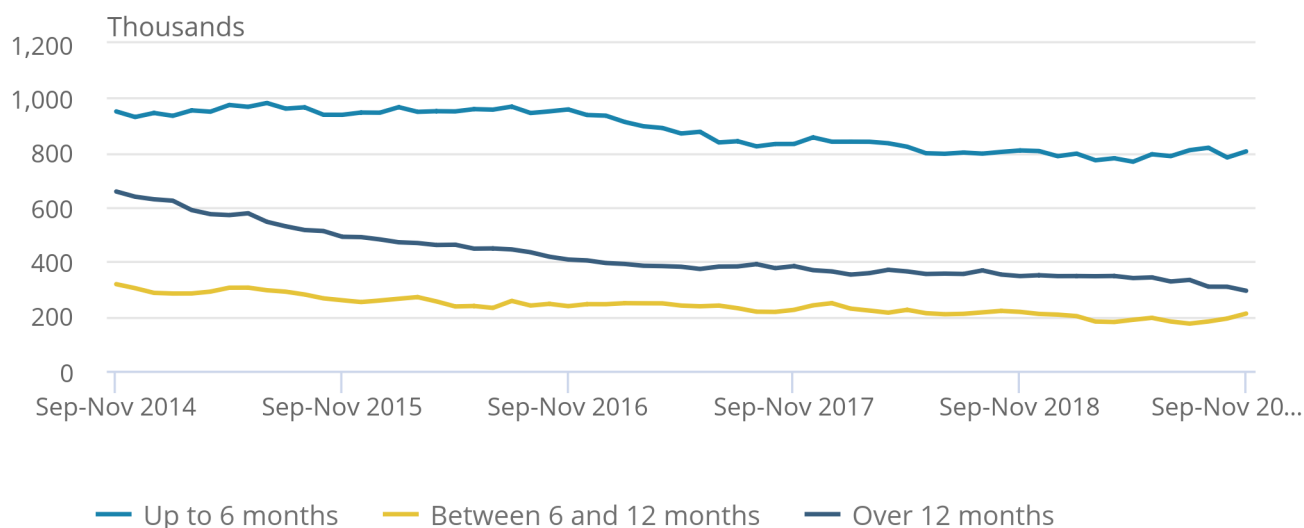
For September to November 2019, an estimated 1.31 million people were unemployed. This is 64,000 fewer than a year earlier and 618,000 fewer than five years earlier.

Figure 7: Long-term unemployment continues to fall

Unemployment in the UK by duration (aged 16 years and over), seasonally adjusted, September to November 2014 to September to November 2019

Figure 7: Long-term unemployment continues to fall

Unemployment in the UK by duration (aged 16 years and over), seasonally adjusted, September to November 2014 to September to November 2019



Source: Office for National Statistics – Labour Force Survey

Looking in more detail at this fall of 618,000 over the last five years (Figure 7):

- the estimated number of people unemployed for up to six months fell by 146,000 to 804,000, but has been relatively stable for the last two years
- for those unemployed for over six and up to 12 months, the number fell by 108,000 to 209,000, but has been broadly flat for the last three years
- the largest fall was for long-term unemployment (those unemployed for over one year), which was down 364,000 to 293,000, with the level for men reaching a record low of 177,000

5 . Economic inactivity

[Economic inactivity](#) measures people without a job but who are not classed as unemployed because they have not been actively seeking work within the last four weeks and/or they are unable to start work within the next two weeks. Our headline measure of economic inactivity is for those aged between 16 and 64 years.

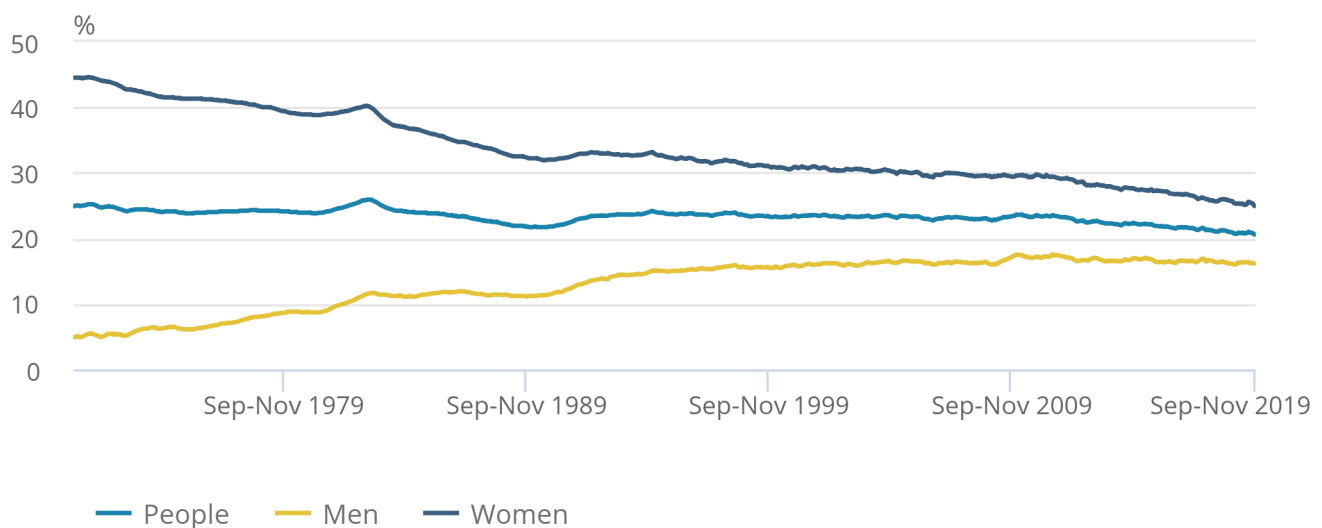
Since comparable records began in 1971, the economic inactivity rate for all people aged between 16 and 64 years has been generally falling (although it increased during recessions). This is because of a gradual fall in the economic inactivity rate for women (as seen in Figure 8).

Figure 8: Overall inactivity rate for people aged between 16 and 64 years was a record low of 20.6%, down 0.4 percentage points on the year

UK economic inactivity rate (all people aged 16 to 64 years), seasonally adjusted, January to March 1971 to September to November 2019

Figure 8: Overall inactivity rate for people aged between 16 and 64 years was a record low of 20.6%, down 0.4 percentage points on the year

UK economic inactivity rate (all people aged 16 to 64 years), seasonally adjusted, January to March 1971 to September to November 2019



Source: Office for National Statistics – Labour Force Survey

For people aged between 16 and 64 years, for September to November 2019:

- the estimated economic inactivity rate for all people was a record low of 20.6%, down 0.4 percentage points both on the year and on the quarter
- the estimated economic inactivity rate for men was 16.2%, largely unchanged on the year but down 0.2 percentage points on the quarter
- the estimated economic inactivity rate for women was a record low of 24.9%, down 0.8 percentage points on the year and down 0.6 percentage points on the quarter

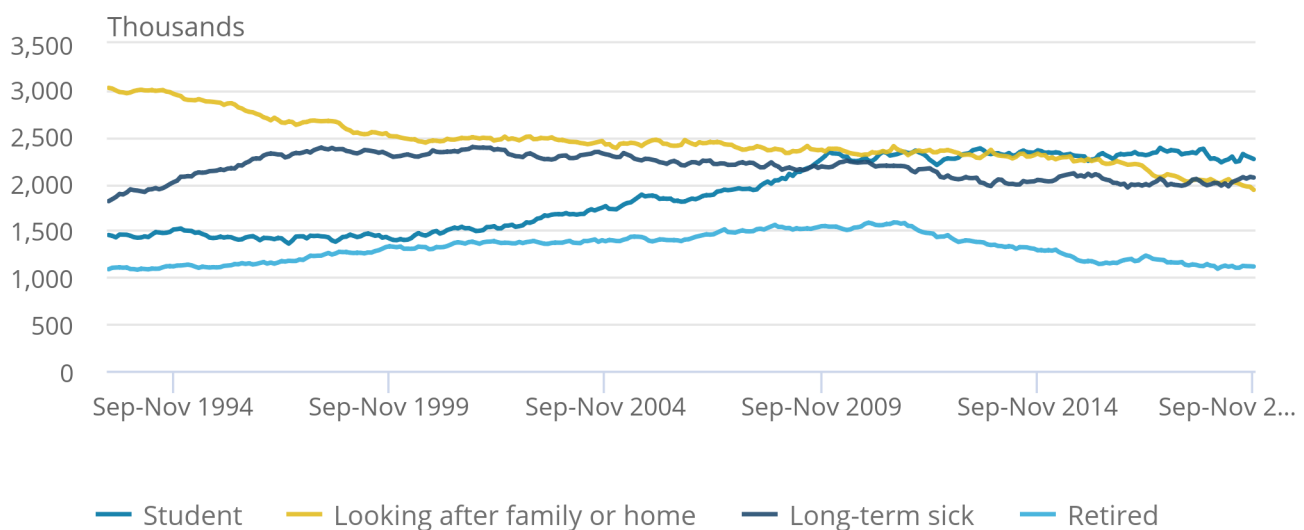
Estimates for September to November 2019 show 8.51 million people aged between 16 and 64 years not in the labour force (economically inactive). This was 145,000 fewer than a year earlier and 587,000 fewer than five years earlier. The annual decrease was driven by women, with the level down 157,000 to reach a record low of 5.18 million.

Figure 9: The number of people who are inactive because they are looking after family or home is at a record low

Inactive people (aged 16 to 64 years) by reason in the UK, seasonally adjusted, March to May 1993 to September to November 2019

Figure 9: The number of people who are inactive because they are looking after family or home is at a record low

Inactive people (aged 16 to 64 years) by reason in the UK, seasonally adjusted, March to May 1993 to September to November 2019



Source: Office for National Statistics – Labour Force Survey

Looking in more detail at the estimated fall of 587,000 in economic inactivity over the last five years, the categories showing the largest decreases were people looking after the family or home (down 387,000 to a record low of 1.93 million) and those (under 65 years) retiring from the labour force (down 173,000).

The fall was almost entirely driven by women, with a decrease of 490,000. This reflects changes to the State Pension age, resulting in fewer women retiring between the ages of 60 and 65 years, as well as more women in younger age groups participating in the labour market.

When the series began in March to May 1993, looking after family and home was the most common reason for inactivity, comprising 35.3% of the total number of economically inactive people. By September to November 2019, the share had decreased to 22.7% and it was now the third most common reason, behind students (26.6%) and the long-term sick (24.3%).

6 . Employment data

[Employment, unemployment and economic inactivity](#)

Dataset A05 SA | Updated on 21 January 2020

Estimates of UK employment, unemployment and economic inactivity broken down into age bands.

[Full-time, part-time and temporary workers](#)

Dataset EMP01 SA | Updated on 21 January 2020

Estimates of UK employment including a breakdown by sex, type of employment, and full-time and part-time working.

[Actual weekly hours worked](#)

Dataset HOUR01 SA | Updated on 21 January 2020

Estimates for the hours that people in employment work in the UK.

[Unemployment by age and duration](#)

Dataset UNEM01 SA | Updated on 21 January 2020

Estimates of unemployment in the UK including a breakdown by sex, age group and the length of time people are unemployed.

[Economic inactivity by reason](#)

Dataset INAC01 SA | Updated on 21 January 2020

Estimates of those not in the UK labour force measured by the reasons given for inactivity.

[Labour Force Survey sampling variability](#)

Dataset A11 | Updated on 21 January 2020

Labour Force Survey sampling variability (95% confidence intervals).

7 . Glossary

Actual and usual hours worked

Statistics for [usual hours worked](#) measure how many hours people usually work per week. Compared with [actual hours worked](#) they are not affected by absences and so can provide a better measure of normal working patterns. For example, a person who usually works 37 hours a week but who was on holiday for a week would be recorded as working zero actual hours for that week, while usual hours would be recorded as 37 hours.

Economic inactivity

People not in the labour force (also known as [economically inactive](#)) are not in employment but do not meet the internationally accepted definition of unemployment because they have not been seeking work within the last four weeks and/or they are unable to start work in the next two weeks. The economic inactivity rate is the proportion of people aged between 16 and 64 years who are not in the labour force.

Employment

[Employment](#) measures the number of people in paid work, or who had a job that they were temporarily away from (for example, because they were on holiday or off sick). This differs from the number of jobs because some people have more than one job. The employment rate is the proportion of people aged between 16 and 64 years who are in employment. A more detailed explanation is available in our [Guide to labour market statistics](#).

Unemployment

[Unemployment](#) measures people without a job who have been actively seeking work within the last four weeks and are available to start work within the next two weeks. The unemployment rate is not the proportion of the total population who are unemployed. It is the proportion of the economically active population (those in work plus those seeking and available to work) who are unemployed.

A [more detailed glossary](#) is available.

8 . Measuring the data

This bulletin relies on data collected from the [Labour Force Survey \(LFS\)](#), the largest household survey in the UK.

More quality and methodology information on strengths, limitations, appropriate uses, and how the data were created is available in the [Labour Force Survey \(LFS\) QMI](#).

The [LFS performance and quality monitoring reports](#) provide data on response rates and other quality-related issues for the LFS.

9 . Strengths and limitations

The figures in this bulletin come from the Labour Force Survey (LFS), which gathers information from a sample of households across the UK rather than from the whole population. The sample is designed to be as accurate as possible given practical limitations such as time and cost constraints. Results from sample surveys are always estimates, not precise figures. This can have an impact on how changes in the estimates should be interpreted, especially for short-term comparisons.

As the number of people available in the sample gets smaller, the variability of the estimates that we can make from that sample size gets larger. Estimates for small groups (for example, unemployed people aged between 16 and 17 years), which are based on small subsets of the LFS sample, are less reliable and tend to be more volatile than for larger aggregated groups (for example, the total number of unemployed people).

In general, changes in the numbers (and especially the rates) reported in this bulletin between three-month periods are small and are not usually greater than the level that can be explained by sampling variability. Short-term movements in reported rates should be considered alongside longer-term patterns in the series and corresponding movements in other sources to give a fuller picture.

Comparability

The data in this bulletin follow internationally accepted definitions specified by the [International Labour Organization](#). This ensures that the estimates for the UK are comparable with those for other countries.

Further information is available in [A guide to labour market statistics](#).

Table 1: Labour Force Survey Sampling Variability (95% Confidence Intervals)
Sampling variability (95% Confidence Intervals) of UK Labour Force Survey estimates: September to November 2019

	Level	Sampling variability of level (*)	Change on quarter	Sampling variability of change on quarter (*)	Change on year	Sampling variability of change on year (*)
Employment (000s, aged 16 and over)	32,901	± 176	208	± 151	359	± 237
Employment rate (aged 16 to 64)	76.3%	± 0.4	0.5	± 0.3	0.6	± 0.5
Average weekly hours	32.0	± 0.2	-0.1	± 0.2	0.1	± 0.2
Unemployment (000s, aged 16 and over)	1,306	± 70	-7	± 76	-64	± 98
Unemployment rate (aged 16 and over)	3.8%	± 0.2	0.0	± 0.2	-0.2	± 0.3
Economically active (000s, aged 16 and over)	34,207	± 168	201	± 147	295	± 228
Economic activity rate (aged 16 to 64)	79.4%	± 0.4	0.4	± 0.3	0.4	± 0.5
Economically inactive (000s, aged 16 to 64)	8,506	± 152	-171	± 133	-145	± 207
Economic inactivity rate (aged 16 to 64)	20.6%	± 0.4	-0.4	± 0.3	-0.4	± 0.5
Redundancies (000s, aged 16 and over)	115	± 20	0	± 28	24	± 26

Notes

1. The sampling variability estimates are for 95% confidence intervals and are calculated on data that are not seasonally adjusted. [Back to table](#)
2. This data is part of data table A11: Labour Force Survey sampling variability, which is part of the Labour market overview, UK release. [Back to table](#)

10 . Related links

[Labour market economic commentary](#)

Article | Updated on 21 January 2020

Additional economic analysis of the latest UK labour market headline statistics and long-term trends.

[Regional labour market statistics in the UK](#)

Bulletin | Updated on 21 January 2020

Regional, local authority and Parliamentary constituency breakdowns of changes in UK employment, unemployment, economic inactivity and other employment-related statistics.

[Public sector employment](#)

Bulletin | Last updated on 17 December 2019

Quarterly estimates of the number of people employed in the public and private sectors in the UK. The public sector comprises central government, local government and public corporations.

[Young people not in education, employment or training](#)

Bulletin | Last updated on 21 November 2019

Quarterly bulletin examining estimates of men and women aged between 16 and 24 years in the UK who are not studying or in employment.

[Working and workless households in the UK](#)

Bulletin | Last updated on 27 November 2019

Commentary on quarterly estimates of the economic status of UK households and the people living in them.

[Improvements to the weighting methodology used in the Labour Force Survey longitudinal datasets](#)

Methodology article | Updated on 21 January 2020

Information about the change that is being made and the impact this will have on LFS flows estimates in the next release of dataset X02, which is being published on 18 February 2020.

Index of Tables

The table below provides an index of the tables appearing in this Statistical Bulletin and it shows how these table numbers match up with the Excel spreadsheet datasets which are available on the website at:
<https://www.ons.gov.uk/employmentandlabourmarket/peopleinwork/employmentandemployeetypes/bulletins/uklabourmarket/january2020/relateddata>

The complete set of labour market tables is available from the Labour Market Overview bulletin.

Statistical Bulletin table number	Table description	Dataset
SUMMARY		
1	Labour Force Survey Summary	Dataset A02 SA
2 (*)	Labour market status by age group	Dataset A05 SA
EMPLOYMENT AND JOBS		
3	Full-time, part-time & temporary workers	Dataset EMP01 SA
4	Public and private sector employment	Dataset EMP02
4(1)	Public sector employment by industry	Dataset EMP03
5	Workforce jobs summary	Dataset JOBS01
6 (**)	Workforce jobs by industry	Dataset JOBS02
7	Actual weekly hours worked	Dataset HOUR01 SA
7(1)	Usual weekly hours worked	Dataset HOUR02 SA
NON-UK WORKERS		
8	Employment by country of birth and nationality	Dataset EMP06
8(1)	Unemployment and economic inactivity by country of birth and nationality	Dataset A12
UNEMPLOYMENT		
9	Unemployment by age and duration	Dataset UNEM01 SA
ECONOMIC ACTIVITY AND INACTIVITY		
10(*)	Economic activity by age	Dataset A05 SA
11	Economic inactivity by reason	Dataset INAC01 SA
12	Labour market and educational status of young people	Dataset A06 SA
EARNINGS		
13	Average Weekly Earnings (nominal) - Total pay	Dataset EARN01
14	Average Weekly Earnings (nominal) - Bonus pay	Dataset EARN01
15	Average Weekly Earnings (nominal) - Regular pay	Dataset EARN01
16	Average Weekly Earnings real and nominal (summary table)	Dataset EARN01
INTERNATIONAL SUMMARY		
17	International comparisons of employment and unemployment	Dataset A10
LABOUR DISPUTES		
18	Labour disputes	Dataset LABD01
VACANCIES		
19	Vacancies by size of business	Dataset VACS03
20	Vacancies and unemployment	Dataset VACS01
21	Vacancies by industry	Dataset VACS02
REDUNDANCIES		
22	Redundancies levels and rates	Dataset RED01 SA
REGIONAL SUMMARY		
23	Regional labour market summary	Dataset A07

(*) Tables 2 and 10 in the Statistical Bulletin pdf file have been amalgamated into one spreadsheet (Dataset A05 SA).

(**) Table JOBS02 provides more detail than Table 6 in the Statistical Bulletin pdf file.

The following symbols are used in the tables: p provisional, r revised, .. Not available, * suppressed due to small sample size.
The four-character identification codes appearing in the tables are the ONS references for the data series appearing in the Labour Market Statistics dataset which is available on the website at:
<https://www.ons.gov.uk/employmentandlabourmarket/peopleinwork/employmentandemployeetypes/datasets/labourmarketstatistics>

SUMMARY

1 Summary of headline LFS¹ indicators

United Kingdom (thousands)
seasonally adjusted

		LFS household population ¹		Headline indicators					
		Employment				Unemployment		Inactivity	
		Level		Rate ²		Level		Rate ³	
		All aged 16 & over	All aged 16 to 64	All aged 16 & over	All aged 16 to 64	All aged 16 & over	All aged 16 & over	All aged 16 to 64	All aged 16 to 64
		MGSL	LF2O	MGRZ	LF24	MGSC	MG SX	LF2M	LF2S
People	Sep-Nov 2017	52,834	41,189	32,213	75.3	1,437	4.3	8,743	21.2
	Sep-Nov 2018	53,116	41,277	32,542	75.8	1,370	4.0	8,650	21.0
	Dec-Feb 2019	53,184	41,297	32,721	76.1	1,343	3.9	8,536	20.7
	Mar-May 2019	53,252	41,317	32,749	76.0	1,292	3.8	8,619	20.9
	Jun-Aug 2019	53,321	41,339	32,693	75.9	1,314	3.9	8,676	21.0
	Sep-Nov 2019	53,391	41,363	32,901	76.3	1,306	3.8	8,506	20.6
	Change on quarter	70	24	208	0.5	-7	0.0	-171	-0.4
	Change %	0.1	0.1	0.6		-0.6		-2.0	
	Change on year	276	85	359	0.6	-64	-0.2	-145	-0.4
	Change %	0.5	0.2	1.1		-4.6		-1.7	
Men		MGSM	YBTG	MGSA	MGSV	MGSD	MG SY	YBSO	YBTM
	Sep-Nov 2017	25,833	20,471	17,081	79.9	769	4.3	3,363	16.4
	Sep-Nov 2018	25,994	20,530	17,274	80.3	739	4.1	3,314	16.1
	Dec-Feb 2019	26,031	20,542	17,311	80.5	731	4.1	3,290	16.0
	Mar-May 2019	26,068	20,554	17,280	80.2	712	4.0	3,368	16.4
	Jun-Aug 2019	26,107	20,567	17,256	80.2	727	4.0	3,366	16.4
	Sep-Nov 2019	26,145	20,581	17,317	80.4	729	4.0	3,326	16.2
	Change on quarter	38	14	60	0.2	2	0.0	-40	-0.2
	Change %	0.1	0.1	0.3		0.2		-1.2	
	Change on year	151	51	42	0.1	-10	-0.1	12	0.0
	Change %	0.6	0.3	0.2		-1.3		0.4	
Women		MGSN	LF2P	MG SB	LF25	MG SE	MG SZ	LF2N	LF2T
	Sep-Nov 2017	27,002	20,717	15,132	70.8	668	4.2	5,380	26.0
	Sep-Nov 2018	27,122	20,748	15,268	71.3	631	4.0	5,336	25.7
	Dec-Feb 2019	27,153	20,756	15,409	71.8	611	3.8	5,246	25.3
	Mar-May 2019	27,184	20,763	15,469	72.0	580	3.6	5,251	25.3
	Jun-Aug 2019	27,215	20,772	15,437	71.6	586	3.7	5,310	25.6
	Sep-Nov 2019	27,247	20,782	15,584	72.3	577	3.6	5,180	24.9
	Change on quarter	32	10	148	0.7	-9	-0.1	-131	-0.6
	Change %	0.1	0.0	1.0		-1.6		-2.5	
	Change on year	125	34	317	1.1	-54	-0.4	-157	-0.8
	Change %	0.5	0.2	2.1		-8.5		-2.9	

Source: Labour Force Survey

Labour market statistics enquiries: labour.market@ons.gov.uk

1. The Labour Force Survey (LFS) is a survey of households in the UK.

2. The headline employment rate is the number of people aged 16 to 64 in employment divided by the population aged 16 to 64.

3. The headline unemployment rate is the number of unemployed people (aged 16+) divided by the economically active population (aged 16+). The economically active population is defined as those in employment plus those who are unemployed.

4. The headline inactivity rate is the number of people aged 16 to 64 divided by the population aged 16-64.

Note on headline employment, unemployment and inactivity rates

The headline employment and inactivity rates are based on the population aged 16 to 64 but the headline unemployment rate is based on the economically active population aged 16 and over. The employment and inactivity rates for those aged 16 and over are affected by the inclusion of the retired population in the denominators and are therefore less meaningful than the rates for those aged from 16 to 64. However, for the unemployment rate for those aged 16 and over, no such effect occurs as the denominator for the unemployment rate is the economically active population which only includes people in work or actively seeking and able to work.

Note on headline employment, unemployment and inactivity levels

The headline employment and unemployment levels are for those aged 16 and over; they measure all people in work or actively seeking and able to work. However, the headline inactivity level is for those aged 16 to 64. The inactivity rate for those aged 16 and over is less meaningful as it includes elderly people who have retired from the labour force.

SUMMARY

2(1) Labour market status by age group

United Kingdom (thousands) seasonally adjusted

		Aged 16 and over						Aged 16-64					
		Employment		Unemployment		Inactivity		Employment		Unemployment		Inactivity	
		Level	Rate	Level	Rate	Level	Rate	Level	Rate	Level	Rate	Level	Rate
		MGRZ	MGSR	MGSC	MG SX	MGSI	YBTC	LF2G	LF24	LF2I	LF2Q	LF2M	LF2S
People	Sep-Nov 2017	32,213	61.0	1,437	4.3	19,184	36.3	31,031	75.3	1,415	4.4	8,743	21.2
	Sep-Nov 2018	32,542	61.3	1,370	4.0	19,203	36.2	31,272	75.8	1,355	4.2	8,650	21.0
	Dec-Feb 2019	32,721	61.5	1,343	3.9	19,120	36.0	31,438	76.1	1,323	4.0	8,536	20.7
	Mar-May 2019	32,749	61.5	1,292	3.8	19,211	36.1	31,421	76.0	1,276	3.9	8,619	20.9
	Jun-Aug 2019	32,693	61.3	1,314	3.9	19,315	36.2	31,365	75.9	1,297	4.0	8,676	21.0
	Sep-Nov 2019	32,901	61.6	1,306	3.8	19,184	35.9	31,577	76.3	1,280	3.9	8,506	20.6
	Change on quarter	208	0.3	-7	0.0	-131	-0.3	212	0.5	-17	-0.1	-171	-0.4
	Change %	0.6		-0.6		-0.7		0.7		-1.3		-2.0	
	Change on year	359	0.4	-64	-0.2	-19	-0.2	305	0.6	-75	-0.3	-145	-0.4
	Change %	1.1		-4.6		-0.1		1.0		-5.5		-1.7	
Men		MGSA	MGSS	MGSD	MG SY	MG SJ	YBTD	YBSF	MG SV	YBSI	YBTJ	YBSO	YBTM
	Sep-Nov 2017	17,081	66.1	769	4.3	7,983	30.9	16,354	79.9	755	4.4	3,363	16.4
	Sep-Nov 2018	17,274	66.5	739	4.1	7,980	30.7	16,486	80.3	730	4.2	3,314	16.1
	Dec-Feb 2019	17,311	66.5	731	4.1	7,988	30.7	16,532	80.5	719	4.2	3,290	16.0
	Mar-May 2019	17,280	66.3	712	4.0	8,076	31.0	16,482	80.2	704	4.1	3,368	16.4
	Jun-Aug 2019	17,256	66.1	727	4.0	8,123	31.1	16,485	80.2	716	4.2	3,366	16.4
	Sep-Nov 2019	17,317	66.2	729	4.0	8,099	31.0	16,543	80.4	713	4.1	3,326	16.2
	Change on quarter	60	0.1	2	0.0	-24	-0.1	58	0.2	-4	0.0	-40	-0.2
	Change %	0.3		0.2		-0.3		0.4		-0.5		-1.2	
	Change on year	42	-0.2	-10	-0.1	119	0.3	56	0.1	-17	-0.1	12	0.0
	Change %	0.2		-1.3		1.5		0.3		-2.3		0.4	
Women		MGSB	MGST	MGSE	MG SZ	MG SK	YBTE	LF2H	LF25	LF2J	LF2R	LF2N	LF2T
	Sep-Nov 2017	15,132	56.0	668	4.2	11,201	41.5	14,677	70.8	660	4.3	5,380	26.0
	Sep-Nov 2018	15,268	56.3	631	4.0	11,223	41.4	14,786	71.3	626	4.1	5,336	25.7
	Dec-Feb 2019	15,409	56.8	611	3.8	11,132	41.0	14,906	71.8	603	3.9	5,246	25.3
	Mar-May 2019	15,469	56.9	580	3.6	11,135	41.0	14,940	72.0	573	3.7	5,251	25.3
	Jun-Aug 2019	15,437	56.7	586	3.7	11,192	41.1	14,881	71.6	581	3.8	5,310	25.6
	Sep-Nov 2019	15,584	57.2	577	3.6	11,085	40.7	15,034	72.3	567	3.6	5,180	24.9
	Change on quarter	148	0.5	-9	-0.1	-107	-0.4	154	0.7	-13	-0.1	-131	-0.6
	Change %	1.0		-1.6		-1.0		1.0		-2.3		-2.5	
	Change on year	317	0.9	-54	-0.4	-138	-0.7	249	1.1	-58	-0.4	-157	-0.8
	Change %	2.1		-8.5		-1.2		1.7		-9.3		-2.9	
		Aged 16-17						Aged 18-24					
		Employment		Unemployment		Inactivity		Employment		Unemployment		Inactivity	
		Level	Rate	Level	Rate	Level	Rate	Level	Rate	Level	Rate	Level	Rate
		YBTO	YBUA	YBVH	YBVK	YCAS	LWEX	YBTR	YBUD	YBVN	YBVQ	YCAV	LWFA
People	Sep-Nov 2017	340	24.0	118	25.7	957	67.6	3,501	62.1	417	10.6	1,721	30.5
	Sep-Nov 2018	313	22.5	103	24.8	977	70.1	3,541	63.6	408	10.3	1,622	29.1
	Dec-Feb 2019	332	23.8	88	21.0	972	69.8	3,528	63.6	404	10.3	1,618	29.1
	Mar-May 2019	341	24.5	83	19.6	967	69.5	3,432	62.1	410	10.7	1,687	30.5
	Jun-Aug 2019	338	24.2	86	20.3	971	69.7	3,366	61.1	408	10.8	1,734	31.5
	Sep-Nov 2019	344	24.5	94	21.4	966	68.8	3,420	62.3	388	10.2	1,680	30.6
	Change on quarter	7	0.3	8	1.1	-5	-0.8	54	1.2	-20	-0.6	-54	-0.9
	Change %	2.0		9.2		-0.6		1.6		-5.0		-3.1	
	Change on year	31	2.1	-10	-3.4	-11	-1.3	-121	-1.2	-20	-0.1	58	1.5
	Change %	10.0		-9.4		-1.1		-3.4		-4.9		3.6	
Men		YBTP	YBUB	YBVI	YBVL	YCAT	LWEY	YBTS	YBUE	YBVO	YBVR	YCAW	LWFB
	Sep-Nov 2017	162	22.3	58	26.5	505	69.7	1,801	62.6	242	11.8	835	29.0
	Sep-Nov 2018	148	20.8	53	26.4	512	71.8	1,853	65.1	236	11.3	756	26.6
	Dec-Feb 2019	161	22.6	50	23.8	502	70.3	1,813	64.0	248	12.0	773	27.3
	Mar-May 2019	156	21.8	47	23.0	511	71.6	1,750	62.0	249	12.5	824	29.2
	Jun-Aug 2019	156	21.9	50	24.2	508	71.1	1,736	61.7	246	12.4	831	29.5
	Sep-Nov 2019	153	21.2	53	25.7	514	71.4	1,758	62.7	240	12.0	805	28.7
	Change on quarter	-4	-0.7	3	1.4	6	0.3	22	1.0	-6	-0.4	-26	-0.8
	Change %	-2.3		5.5		1.1		1.3		-2.5		-3.1	
	Change on year	5	0.5	0	-0.7	2	-0.4	-96	-2.4	3	0.7	49	2.2
	Change %	3.2		-0.4		0.3		-5.2		1.4		6.5	
Women		YBTQ	YBUC	YBVJ	YBVM	YCAU	LWEZ	YBTT	YBUF	YBVP	YBVS	YCA X	LWFC
	Sep-Nov 2017	178	25.8	60	25.1	452	65.5	1,700	61.6	175	9.3	887	32.1
	Sep-Nov 2018	165	24.3	50	23.4	465	68.3	1,688	61.9	172	9.2	866	31.8
	Dec-Feb 2019	171	25.1	38	18.1	471	69.3	1,715	63.2	156	8.3	844	31.1
	Mar-May 2019	186	27.4	36	16.4	457	67.3	1,682	62.2	160	8.7	863	31.9
	Jun-Aug 2019	181	26.6	36	16.5	463	68.1	1,630	60.5	162	9.1	903	33.5
	Sep-Nov 2019	192	28.0	41	17.6	452	66.1	1,663	61.9	148	8.2	875	32.6
	Change on quarter	10	1.3	5	1.1	-11	-2.1	33	1.4	-14	-0.9	-28	-0.9
	Change %	5.7		14.5		-2.4		2.0		-8.6		-3.1	
	Change on year	27	3.7	-10	-5.8	-12	-2.3	-25	0.0	-23	-1.0	8	0.8
	Change %	16.1		-18.9		-2.6		-1.5		-13.5		1.0	

SUMMARY

2(2) Labour market status by age group

United Kingdom (thousands) seasonally adjusted

		Aged 25-34						Aged 35-49					
		Employment		Unemployment		Inactivity		Employment		Unemployment		Inactivity	
		Level	Rate	Level	Rate	Level	Rate	Level	Rate	Level	Rate	Level	Rate
		YBTU	YBUG	YCGM	YCGP	YCAV	LWFD	YBTX	YBUJ	YCGS	YCGV	YCBB	LWFG
People	Sep-Nov 2017	7,421	83.4	300	3.9	1,172	13.2	10,873	84.9	305	2.7	1,633	12.7
	Sep-Nov 2018	7,478	83.7	269	3.5	1,192	13.3	10,871	85.2	306	2.7	1,583	12.4
	Dec-Feb 2019	7,543	84.3	269	3.4	1,136	12.7	10,876	85.3	292	2.6	1,579	12.4
	Mar-May 2019	7,570	84.5	248	3.2	1,139	12.7	10,882	85.5	276	2.5	1,577	12.4
	Jun-Aug 2019	7,550	84.2	272	3.5	1,140	12.7	10,866	85.4	276	2.5	1,584	12.4
	Sep-Nov 2019	7,611	85.0	267	3.4	1,080	12.1	10,906	85.7	274	2.5	1,543	12.1
	Change on quarter	62	0.7	-5	-0.1	-60	-0.7	40	0.3	-2	0.0	-40	-0.3
	Change %	0.8		-1.8		-5.3		0.4		-0.6		-2.5	
	Change on year	133	1.3	-1	-0.1	-112	-1.3	36	0.5	-32	-0.3	-40	-0.3
	Change %	1.8		-0.5		-9.4		0.3		-10.4		-2.5	
Men		YBTV	YBUH	YCGN	YCGQ	YCAZ	LWFE	YBTY	YBUK	YCGT	YCGW	YCBC	LWFH
	Sep-Nov 2017	4,002	90.1	143	3.5	298	6.7	5,743	90.8	151	2.6	428	6.8
	Sep-Nov 2018	4,028	89.9	148	3.5	307	6.8	5,727	90.9	146	2.5	426	6.8
	Dec-Feb 2019	4,050	90.2	141	3.4	299	6.7	5,738	91.2	131	2.2	425	6.7
	Mar-May 2019	4,061	90.3	139	3.3	298	6.6	5,743	91.3	127	2.2	417	6.6
	Jun-Aug 2019	4,050	90.0	144	3.4	308	6.8	5,750	91.5	128	2.2	407	6.5
	Sep-Nov 2019	4,075	90.5	141	3.3	288	6.4	5,734	91.3	135	2.3	415	6.6
	Change on quarter	25	0.5	-3	-0.1	-20	-0.5	-16	-0.2	7	0.1	8	0.1
	Change %	0.6		-2.3		-6.6		-0.3		5.9		2.0	
	Change on year	47	0.6	-7	-0.2	-19	-0.5	7	0.3	-11	-0.2	-11	-0.2
	Change %	1.2		-4.6		-6.3		0.1		-7.6		-2.6	
Women		YBTW	YBUI	YCGO	YCGR	YCBA	LWFF	YBTZ	YBUL	YCGU	YCGX	YCBD	LWFI
	Sep-Nov 2017	3,419	76.8	157	4.4	874	19.6	5,130	79.1	154	2.9	1,205	18.6
	Sep-Nov 2018	3,451	77.4	121	3.4	885	19.9	5,144	79.6	160	3.0	1,158	17.9
	Dec-Feb 2019	3,493	78.3	128	3.5	837	18.8	5,138	79.6	161	3.0	1,155	17.9
	Mar-May 2019	3,510	78.7	109	3.0	841	18.9	5,139	79.7	149	2.8	1,160	18.0
	Jun-Aug 2019	3,499	78.5	128	3.5	832	18.7	5,116	79.4	148	2.8	1,177	18.3
	Sep-Nov 2019	3,536	79.4	126	3.4	793	17.8	5,172	80.3	139	2.6	1,129	17.5
	Change on quarter	37	0.9	-2	-0.1	-40	-0.9	56	0.9	-9	-0.2	-48	-0.7
	Change %	1.1		-1.3		-4.8		1.1		-6.2		-4.1	
	Change on year	86	1.9	6	0.1	-93	-2.1	28	0.7	-21	-0.4	-29	-0.4
	Change %	2.5		4.6		-10.5		0.5		-13.0		-2.5	
		Aged 50-64						Age 65+					
		Employment		Unemployment		Inactivity		Employment		Unemployment		Inactivity	
		Level	Rate	Level	Rate	Level	Rate	Level	Rate	Level	Rate	Level	Rate
		LF26	LF2U	LF28	LF2E	LF2A	LF2W	LFK4	LFK6	K5HU	K5HW	LFL4	LFL6
People	Sep-Nov 2017	8,895	71.6	275	3.0	3,259	26.2	1,182	10.1	22	1.9	10,441	89.7
	Sep-Nov 2018	9,069	71.9	269	2.9	3,276	26.0	1,270	10.7	15	1.1	10,553	89.1
	Dec-Feb 2019	9,159	72.4	269	2.9	3,231	25.5	1,282	10.8	20	1.5	10,584	89.0
	Mar-May 2019	9,196	72.4	260	2.7	3,249	25.6	1,328	11.1	16	1.2	10,592	88.7
	Jun-Aug 2019	9,246	72.5	255	2.7	3,247	25.5	1,327	11.1	16	1.2	10,639	88.8
	Sep-Nov 2019	9,295	72.7	256	2.7	3,236	25.3	1,324	11.0	26	2.0	10,679	88.8
	Change on quarter	49	0.2	2	0.0	-11	-0.2	-4	-0.1	10	0.7	40	0.0
	Change %	0.5		0.6		-0.3		-0.3		60.5		0.4	
	Change on year	226	0.8	-12	-0.2	-40	-0.7	53	0.3	12	0.8	126	-0.4
	Change %	2.5		-4.6		-1.2		4.2		79.4		1.2	
Men		MGUX	YBUN	MGVM	MGXF	MGWB	LWFK	MGVA	YBUQ	MGVP	MGXI	MGWE	LWFN
	Sep-Nov 2017	4,646	76.1	161	3.3	1,296	21.2	727	13.6	15	2.0	4,620	86.2
	Sep-Nov 2018	4,731	76.4	146	3.0	1,313	21.2	788	14.4	9	1.2	4,666	85.4
	Dec-Feb 2019	4,770	76.8	149	3.0	1,292	20.8	779	14.2	12	1.5	4,698	85.6
	Mar-May 2019	4,772	76.6	142	2.9	1,319	21.2	799	14.5	9	1.1	4,707	85.4
	Jun-Aug 2019	4,792	76.6	148	3.0	1,312	21.0	771	13.9	11	1.4	4,757	85.9
	Sep-Nov 2019	4,823	76.9	144	2.9	1,304	20.8	774	13.9	17	2.1	4,773	85.8
	Change on quarter	31	0.3	-5	-0.1	-8	-0.2	2	0.0	6	0.7	16	-0.1
	Change %	0.6		-3.0		-0.6		0.3		50.7		0.3	
	Change on year	93	0.5	-2	-0.1	-8	-0.4	-14	-0.5	7	0.9	107	0.4
	Change %	2.0		-1.5		-0.6		-1.8		79.6		2.3	
Women		LF27	LF2V	LF29	LF2F	LF2B	LF2X	LFK5	LFK7	K5HV	K5HX	LFL5	LFL7
	Sep-Nov 2017	4,250	67.2	115	2.6	1,963	31.0	455	7.2	8	1.7	5,821	92.6
	Sep-Nov 2018	4,339	67.5	123	2.8	1,963	30.6	482	7.6	5	1.1	5,887	92.3
	Dec-Feb 2019	4,390	68.1	120	2.7	1,939	30.1	503	7.9	8	1.6	5,886	92.0
	Mar-May 2019	4,424	68.4	118	2.6	1,930	29.8	529	8.2	7	1.4	5,884	91.6
	Jun-Aug 2019	4,454	68.6	106	2.3	1,935	29.8	556	8.6	5	1.0	5,882	91.3
	Sep-Nov 2019	4,472	68.6	113	2.5	1,932	29.6	550	8.5	10	1.7	5,905	91.3
	Change on quarter	18	0.1	6	0.1	-3	-0.1	-6	-0.1	4	0.8	24	0.1
	Change %	0.4		5.8		-0.2		-1.1		80.8		0.4	
	Change on year	134	1.1	-10	-0.3	-31	-0.9	68	0.9	4	0.6	19	-1.0
	Change %	3.1		-8.3		-1.6		14.0		79.1		0.3	

Source: Labour Force Survey

Labour market statistics enquiries: labour.market@ons.gov.uk

EMPLOYMENT AND JOBS

3 Full-time, part-time and temporary workers

United Kingdom (thousands of people aged 16 and over) seasonally adjusted

		All in employment					Full-time and part-time workers ¹							Total Workers with second jobs
		Total	Employees	Self employed	Unpaid family workers	Government supported training & employment programmes ²	Total people working full- time	total people working part-time	Employees working full- time	Employees working part time	Self- employed people working full- time	Self- employed people working part- time		
People		1	2	3	4	5	6	7	8	9	10	11	12	
		MGRZ	MGRN	MGRQ	MGRT	MGRW	YCBE	YCBH	YCBK	YCBN	YCBQ	YCBT	YCBW	
	Sep-Nov 2017	32,213	27,242	4,770	123	77	23,641	8,572	20,243	7,000	3,322	1,448	1,136	
	Sep-Nov 2018	32,542	27,532	4,856	106	49	24,008	8,534	20,579	6,953	3,390	1,465	1,117	
	Dec-Feb 2019	32,721	27,711	4,833	134	43	24,146	8,575	20,684	7,027	3,414	1,418	1,129	
	Mar-May 2019	32,749	27,626	4,955	127	40	24,088	8,661	20,606	7,020	3,433	1,522	1,153	
	Jun-Aug 2019	32,693	27,577	4,930	129	57	24,160	8,533	20,611	6,965	3,497	1,433	1,147	
	Sep-Nov 2019	32,901	27,711	5,001	134	54	24,357	8,544	20,761	6,951	3,545	1,456	1,130	
	Change on quarter	208	135	71	6	-3	197	12	149	-15	48	23	-17	
	Change %	0.6	0.5	1.4	4.4	-5.1	0.8	0.1	0.7	-0.2	1.4	1.6	-1.5	
	Change on year	359	179	145	28	6	349	10	181	-2	155	-9	13	
	Change %	1.1	0.7	3.0	26.7	11.9	1.5	0.1	0.9	0.0	4.6	-0.6	1.2	
Men		MGSA	MGRO	MGRR	MGRU	MGRX	YCBF	YCBI	YCBL	YCBO	YCBR	YCBU	YCBX	
	Sep-Nov 2017	17,081	13,803	3,180	60	37	14,814	2,267	12,172	1,632	2,605	575	497	
	Sep-Nov 2018	17,274	13,963	3,230	49	32	14,990	2,284	12,327	1,636	2,641	590	475	
	Dec-Feb 2019	17,311	13,969	3,258	61	24	15,052	2,259	12,353	1,616	2,673	584	472	
	Mar-May 2019	17,280	13,897	3,294	66	23	14,961	2,319	12,279	1,618	2,656	638	482	
	Jun-Aug 2019	17,256	13,867	3,297	58	34	15,023	2,233	12,281	1,585	2,711	585	485	
	Sep-Nov 2019	17,317	13,916	3,308	64	29	15,094	2,223	12,331	1,585	2,729	579	462	
	Change on quarter	60	49	11	6	-6	71	-11	49	0	18	-7	-23	
	Change %	0.3	0.4	0.3	9.4	-16.8	0.5	-0.5	0.4	0.0	0.7	-1.1	-4.8	
	Change on year	42	-47	78	15	-4	104	-62	4	-50	89	-11	-14	
	Change %	0.2	-0.3	2.4	29.6	-11.4	0.7	-2.7	0.0	-3.1	3.4	-1.8	-2.9	
Women		MGSB	MGRP	MGRS	MGRV	MGRY	YCBG	YCBJ	YCBM	YCBP	YCBS	YCBV	YCBY	
	Sep-Nov 2017	15,132	13,439	1,590	63	40	8,827	6,305	8,071	5,368	718	873	639	
	Sep-Nov 2018	15,268	13,569	1,625	57	16	9,018	6,250	8,252	5,317	750	876	641	
	Dec-Feb 2019	15,409	13,742	1,575	73	20	9,093	6,316	8,331	5,411	741	834	657	
	Mar-May 2019	15,469	13,729	1,661	61	17	9,126	6,342	8,328	5,402	777	884	671	
	Jun-Aug 2019	15,437	13,710	1,633	70	23	9,138	6,299	8,330	5,380	786	848	662	
	Sep-Nov 2019	15,584	13,795	1,693	70	26	9,263	6,321	8,430	5,365	816	877	668	
	Change on quarter	148	85	60	0	3	126	22	100	-15	30	30	6	
	Change %	1.0	0.6	3.6	0.1	12.6	1.4	0.4	1.2	-0.3	3.8	3.5	0.9	
	Change on year	317	226	68	14	9	245	71	178	48	66	2	27	
	Change %	2.1	1.7	4.2	24.1	58.2	2.7	1.1	2.2	0.9	8.8	0.2	4.2	
Temporary employees (reasons for temporary working)														
Part-time workers (reasons for working part-time) ³														
		Total	Total as % of all employees	Could not find permanent job	% that could not find permanent job	Did not want permanent job	Had a contract with period of training	Some other reason	Total ⁴	Could not find full- time job	% that could not find full- time job	Did not want full-time job	Ill or disabled	Student or at school
People		13	14	15	16	17	18	19	20	21	22	23	24	25
		YCBZ	YCCC	YCCF	YCCI	YCCL	YCCO	YCCR	YCCU	YCCX	YCDA	YCDD	YCDG	YCDJ
	Sep-Nov 2017	1,568	5.8	442	28.2	434	144	547	8,447	1,017	12.0	5,989	262	1,106
	Sep-Nov 2018	1,532	5.6	408	26.7	448	119	557	8,418	883	10.5	6,090	270	1,109
	Dec-Feb 2019	1,545	5.6	408	26.4	453	136	548	8,446	950	11.2	6,094	262	1,069
	Mar-May 2019	1,467	5.3	366	24.9	462	130	510	8,542	931	10.9	6,188	280	1,077
	Jun-Aug 2019	1,398	5.1	335	24.0	366	135	562	8,399	869	10.3	6,108	276	1,085
	Sep-Nov 2019	1,459	5.3	373	25.5	393	120	574	8,407	907	10.8	6,078	283	1,086
	Change on quarter	61	0.2	38	1.6	27	-15	11	8	38	0.4	-30	7	1
	Change %	4.3		11.2		7.3	-11.3	2.0	0.1	4.4		-0.5	2.5	0.0
	Change on year	-74	-0.3	-36	-1.1	-55	1	17	-12	24	0.3	-12	14	-23
	Change %	-4.8		-8.8		-12.4	0.5	3.1	-0.1	2.8		-0.2	5.1	-2.1
Men		YCCA	YCCD	YCCG	YCCJ	YCCM	YCCP	YCCS	YCCV	YCCY	YCDB	YCDE	YCDH	YCDK
	Sep-Nov 2017	743	5.4	228	30.7	190	76	249	2,207	454	20.5	1,168	92	464
	Sep-Nov 2018	732	5.2	213	29.1	202	61	256	2,225	397	17.8	1,229	93	485
	Dec-Feb 2019	707	5.1	216	30.5	181	71	239	2,200	414	18.8	1,229	95	433
	Mar-May 2019	664	4.8	187	28.2	193	60	224	2,256	404	17.9	1,296	94	436
	Jun-Aug 2019	638	4.6	167	26.2	149	64	258	2,171	375	17.3	1,262	91	423
	Sep-Nov 2019	699	5.0	197	28.2	172	69	262	2,164	374	17.3	1,245	97	428
	Change on quarter	61	0.4	30	2.0	22	5	4	-7	-1	0.0	-17	6	6
	Change %	9.6		17.8		14.9	7.2	1.7	-0.3	-0.2		-1.4	6.4	1.3
	Change on year	-33	-0.2	-16	-0.9	-30	7	6	-61	-23	-0.5	16	3	-56
	Change %	-4.5		-7.4		-15.0	12.2	2.3	-2.8	-5.7		1.3	3.3	-11.6
Women		YCCB	YCCE	YCCH	YCCK	YCCN	YCCQ	YCCT	YCCW	YCCZ	YCDC	YCDF	YCDI	YCDL
	Sep-Nov 2017	824	6.1	214	25.9	244	69	298	6,240	564	9.0	4,820	170	642
	Sep-Nov 2018	800	5.9	196	24.4	246	58	301	6,193	486	7.8	4,861	176	624
	Dec-Feb 2019	839	6.1	193	23.0	272	65	309	6,246	536	8.6	4,866	168	637
	Mar-May 2019	802	5.8	178	22.2	269	70	285	6,286	526	8.4	4,893	186	641
	Jun-Aug 2019	760	5.5	168	22.1	217	71	304	6,228	494	7.9	4,846	186	663
	Sep-Nov 2019	759	5.5	176	23.1	221	51	312	6,243	533	8.5	4,833	187	657
	Change on quarter	-1	0.0	8	1.0	4	-20	7	15	39	0.6	-13	1	-5
	Change %	-0.1		4.7		2.0	-27.9	2.4	0.2	7.9		-0.3	0.6	-0.8
	Change on year	-41	-0.4	-20	-1.3	-25	-7	11	50	47	0.7	-28	11	33
	Change %	-5.1		-10.3		-10.2	-11.8	3.7	0.8	9.7		-0.6	6.0	5.3

Relationship between columns: 1= 2+3+4+5; 1=6+7; 2=8+9; 3=10+11; 13=15+17+18+19; 20=9+11 ;14=13/2; 16=15/13; 22=21/20

Source: Labour Force Survey

1. The split between full-time and part-time employment is based on respondents' self-classification.

Labour market statistics enquiries: labour.market@ons.gov.uk

2. This series does not include all people on these programmes; it only includes those engaging in any form of work, work experience or work-related training.

3. These series cover Employees and Self-employed only. These series include some temporary employees recorded in columns 13 to 19.

4. The total includes those who did not give a reason for working part-time and it therefore does not equal the sum of columns 21, 23, 24 and 25.

EMPLOYMENT AND JOBS

7 Actual weekly hours worked

United Kingdom (hours worked by people aged 16 and over), seasonally adjusted

	Total weekly hours (millions) ¹²	Average (mean) actual weekly hours worked			
		All workers ¹	Full-time workers ³	Part-time workers ³	Second Jobs
People	YBUS	YBUV	YBUY	YBVB	YBVE
Sep-Nov 2017	1,028.5	31.9	37.2	16.2	10.0
Sep-Nov 2018	1,040.1	32.0	37.1	16.3	9.7
Dec-Feb 2019	1,052.9	32.2	37.4	16.3	9.7
Mar-May 2019	1,052.4	32.1	37.4	16.3	9.6
Jun-Aug 2019	1,049.2	32.1	37.3	16.3	10.1
Sep-Nov 2019	1,054.1	32.0	37.1	16.3	9.5
Change on quarter	4.9	-0.1	-0.1	0.1	-0.6
Change %	0.5	-0.2	-0.4	0.4	-6.0
Change on year	14.0	0.1	0.0	0.1	-0.3
Change %	1.4	0.2	0.0	0.5	-2.8
Men	YBUT	YBUW	YBUZ	YBVC	YBVF
Sep-Nov 2017	619.9	36.3	39.0	15.9	11.0
Sep-Nov 2018	626.7	36.3	39.0	16.3	10.6
Dec-Feb 2019	632.3	36.5	39.2	16.4	10.5
Mar-May 2019	626.3	36.2	39.0	16.2	10.7
Jun-Aug 2019	626.5	36.3	39.0	16.3	10.7
Sep-Nov 2019	626.4	36.2	38.8	16.2	10.3
Change on quarter	0.0	-0.1	-0.2	0.0	-0.4
Change %	0.0	-0.4	-0.4	-0.1	-3.9
Change on year	-0.2	-0.1	-0.2	-0.1	-0.2
Change %	0.0	-0.3	-0.4	-0.7	-2.3
Women	YBUU	YBUX	YBVA	YBVD	YBVG
Sep-Nov 2017	408.6	27.0	34.1	16.3	9.1
Sep-Nov 2018	413.4	27.1	34.0	16.2	9.1
Dec-Feb 2019	420.6	27.3	34.3	16.3	9.1
Mar-May 2019	426.1	27.5	34.7	16.4	8.8
Jun-Aug 2019	422.7	27.4	34.5	16.3	9.6
Sep-Nov 2019	427.7	27.4	34.4	16.4	8.8
Change on quarter	5.0	0.1	-0.1	0.1	-0.7
Change %	1.2	0.2	-0.3	0.6	-7.4
Change on year	14.3	0.4	0.4	0.1	-0.2
Change %	3.4	1.3	1.0	0.9	-2.7

Source: Labour Force Survey

Labour market statistics enquiries: labour.market@ons.gsi.gov.uk

1 Main and second job

2 Total actual weekly hours worked including paid and unpaid overtime.

3 Main job only. The split between full-time and part-time employment is based on respondents' self-classification.

7 (1) Usual weekly hours of work¹

United Kingdom, seasonally adjusted

	All in Employment (%)			Employees (%)			Self-Employed (%)		
	People	Men	Women	People	Men	Women	People	Men	Women
Sep-Nov 2018									
Less than 6 Hours	1.4	0.9	2.0	0.9	0.5	1.3	3.6	2.1	6.4
6 up to 15 hours	6.4	3.5	9.6	5.7	3.0	8.5	9.4	5.0	18.3
16 up to 30 hours	19.8	10.2	30.6	19.4	8.9	30.2	22.7	16.1	35.9
31 up to 45 hours	54.3	60.0	47.8	57.0	63.3	50.5	39.2	46.3	25.2
Over 45 hours	18.1	25.4	10.0	17.0	24.3	9.5	25.1	30.5	14.3
Total (thousands)	32,542	17,274	15,268	27,532	13,963	13,569	4,856	3,230	1,625
Jun-Aug 2019									
Less than 6 Hours	1.5	0.9	2.1	1.0	0.7	1.3	3.6	1.8	7.3
6 up to 15 hours	6.4	3.5	9.6	5.8	3.0	8.7	8.7	4.8	16.5
16 up to 30 hours	19.6	10.1	30.2	19.1	8.8	29.6	22.1	15.5	35.4
31 up to 45 hours	54.0	59.8	47.5	56.8	63.4	50.2	38.7	45.2	25.5
Over 45 hours	18.6	25.7	10.6	17.2	24.2	10.1	26.9	32.6	15.3
Total (thousands)	32,693	17,256	15,437	27,577	13,867	13,710	4,930	3,297	1,633
Sep-Nov 2019									
Less than 6 Hours	1.5	0.9	2.0	1.0	0.7	1.4	3.1	1.7	5.7
6 up to 15 hours	6.3	3.5	9.5	5.7	3.1	8.4	9.1	4.7	17.5
16 up to 30 hours	19.3	9.8	29.9	18.8	8.4	29.3	22.5	15.6	35.9
31 up to 45 hours	54.6	60.4	48.1	57.3	63.7	50.9	39.9	46.7	26.6
Over 45 hours	18.3	25.4	10.4	17.1	24.1	10.0	25.5	31.2	14.4
Total (thousands)	32,901	17,317	15,584	27,711	13,916	13,795	5,001	3,308	1,693

1 Total usual weekly hours worked by people aged 16 and over in main job including paid and unpaid overtime.

Source: Labour Force Survey

Labour market statistics enquiries: labour.market@ons.gov.uk

NON-UK WORKERS

8(1) Employment levels and rates by country of birth and nationality

(first published on 12 November 2019)

United Kingdom (thousands of people aged 16 and over) not seasonally adjusted																				
Country of birth	Europe										Africa		Asia			America and Oceania				
	European Union (EU)										Other Europe (not in EU)	Total Africa	Of which: South Africa	Total Asia	Of which: India	Of which: Pakistan and Bangladesh	Total America and Oceania	Of which: USA	Of which: Australia and New Zealand	Total Non-EU ⁷
	Total ¹	UK	Non UK	Total Europe	Total EU (EU27) ²	EU14 ³	EU8 ⁴	EU2 ⁵	Other EU ⁶											
Levels (aged 16 and over)																				
Country of birth	MGTM	JF6F	JF6G	FSC2	EQ4Q	JJR3	JJR5	EQ4R	FSC3	FSC4	FSC5	JJS3	FSC6	JJS7	JJS9	FSC7	JJR7	JJS5	EQ4S	
Jul - Sep 2017	32,138	26,463	5,673	2,625	2,394	969	1,041	357	28	231	919	186	1,561	477	374	568	88	150	3,279	
Jul - Sep 2018	32,503	26,963	5,532	2,517	2,288	978	901	370	39	229	878	159	1,479	473	337	658	96	152	3,244	
Oct - Dec 2018	32,671	27,011	5,651	2,550	2,303	989	886	384	43	248	893	174	1,568	476	344	640	107	130	3,349	
Jan - Mar 2019	32,641	26,838	5,796	2,666	2,420	994	947	438	41	246	933	200	1,536	452	366	662	108	139	3,376	
Apr - Jun 2019	32,752	26,967	5,777	2,692	2,438	1,019	971	407	41	254	923	198	1,504	475	387	658	105	167	3,339	
Jul - Sep 2019	32,802	27,028	5,770	2,630	2,368	1,020	953	356	40	261	962	176	1,532	483	373	646	93	166	3,401	
Change on year	300	65	238	113	81	42	52	-15	1	32	85	17	52	10	35	-11	-3	13	157	
Change %	0.9	0.2	4.3	4.5	3.5	4.3	5.8	-3.9	3.3	13.9	9.6	10.8	3.5	2.1	10.5	-1.7	-2.6	8.8	4.8	
Nationality	MGTM	JF6H	JF6I	FSC8	EQ4U	JJR4	JJR6	EQ4V	FSC9	FSCE	FSD2	JJS4	FSD3	JJS8	JJT2	FSD4	JJR8	JJS6	EQ4W	
Jul - Sep 2017	32,138	28,569	3,564	2,459	2,363	979	1,032	344	8	96	285	63	544	178	102	276	70	87	1,201	
Jul - Sep 2018	32,503	29,028	3,467	2,341	2,231	980	880	360	11	109	249	50	545	187	91	332	100	86	1,236	
Oct - Dec 2018	32,671	29,098	3,569	2,400	2,274	1,011	869	370	24	126	277	64	593	194	107	299	96	71	1,295	
Jan - Mar 2019	32,641	28,943	3,698	2,513	2,381	1,018	925	423	16	132	273	71	597	182	115	315	101	75	1,317	
Apr - Jun 2019	32,752	29,084	3,661	2,490	2,368	1,019	952	375	22	122	289	63	567	187	121	314	78	95	1,292	
Jul - Sep 2019	32,802	29,209	3,589	2,367	2,238	981	903	333	21	129	297	56	599	210	126	326	68	107	1,351	
Change on year	300	182	122	26	6	1	23	-27	10	20	48	6	54	24	35	-6	-32	21	116	
Change %	0.9	0.6	3.5	1.1	0.3	0.1	2.6	-7.6	88.9	18.1	19.1	12.0	9.9	12.6	38.5	-1.8	-32.1	24.9	9.3	
Rates (aged 16 to 64)																				
Country of birth	LF9D	LFM6	LFM7	FSD5	EQ4Y	LFM8	LFM9	EQ4Z	FSD6	FSD7	FSD8	LFN4	FSD9	LFN6	LFN7	FSE2	LFN2	LFN5	EQ52	
Jul - Sep 2017	75.2	75.5	73.8	80.8	81.8	78.2	84.0	86.1	74.9	71.5	71.5	83.0	64.8	73.9	55.5	76.9	75.1	85.1	68.9	
Jul - Sep 2018	75.7	76.1	74.2	81.5	82.3	79.7	85.6	82.4	72.2	74.6	72.9	83.5	64.4	77.0	55.5	75.7	74.2	81.5	69.3	
Oct - Dec 2018	76.0	76.3	74.7	81.6	82.6	79.8	86.1	83.5	71.8	73.0	73.3	84.7	65.5	75.5	55.9	77.6	79.1	85.7	70.1	
Jan - Mar 2019	75.9	76.3	74.6	81.8	82.8	80.1	85.1	84.6	79.1	72.7	73.1	88.2	64.6	75.3	57.6	77.8	78.4	84.7	69.7	
Apr - Jun 2019	76.0	76.3	74.6	82.2	83.1	80.2	85.2	86.2	78.3	74.4	73.2	87.4	63.4	75.5	59.0	78.6	73.9	87.7	69.3	
Jul - Sep 2019	76.2	76.3	75.6	82.5	83.3	80.6	86.1	84.6	76.0	76.1	74.9	84.9	65.4	77.0	57.9	79.2	78.2	88.8	71.0	
Change on year	0.4	0.2	1.5	1.0	1.0	0.8	0.6	2.2	3.7	1.5	1.9	1.4	0.9	0.0	2.4	3.6	3.9	7.3	1.7	
Nationality	LF9D	LFN8	LFN9	FSE3	EQ54	LFO2	LFO3	EQ55	FSE4	FSE5	FSE6	LFO6	FSE7	LFO8	LFO9	FSE8	LFO4	LFO7	EQ56	
Jul - Sep 2017	75.2	75.3	74.4	80.6	81.5	78.1	84.2	85.8	35.7	62.8	65.8	80.8	58.5	67.5	53.7	74.2	71.0	86.6	63.5	
Jul - Sep 2018	75.7	75.8	75.0	82.1	82.8	80.6	86.5	82.6	39.6	69.8	68.4	87.1	56.0	72.2	46.7	77.1	76.9	80.5	64.1	
Oct - Dec 2018	76.0	76.0	75.8	82.6	83.3	81.0	86.0	84.5	68.9	72.3	70.5	86.6	58.3	69.7	48.4	77.0	73.7	86.1	65.6	
Jan - Mar 2019	75.9	76.1	75.3	82.1	82.7	79.9	85.0	84.9	75.0	72.9	68.8	91.4	57.2	70.6	50.9	76.9	78.3	82.7	64.8	
Apr - Jun 2019	76.0	76.1	75.0	82.5	83.3	80.8	85.0	85.9	83.7	69.5	70.7	90.2	54.3	69.3	53.8	76.8	73.1	86.3	63.4	
Jul - Sep 2019	76.2	76.2	76.2	82.5	82.8	80.3	85.5	83.5	83.7	76.3	71.8	87.1	59.4	73.1	55.4	78.1	74.2	92.0	67.2	
Change on year	0.4	0.4	1.2	0.4	0.1	-0.4	-1.0	0.8	44.2	6.6	3.3	0.0	3.4	0.9	8.7	1.1	-2.7	11.4	3.1	
Source: Labour Force Survey																				
Labour market statistics enquiries: labour.market@ons.gov.uk																				

Source: Labour Force Survey

Labour market statistics enquiries: labour.market@ons.gov.uk

1. The total series includes people who do not state their country of birth or nationality. The total levels series MGTM does not therefore equal the sum of the "UK" and "Non-UK" series.

2. This series consists of all 27 EU member states excluding the UK. This series equals the sum of EU14, EU8, EU2 and Other EU.

3. Austria, Belgium, Denmark, Finland, France, Germany, Greece, Ireland, Italy, Luxembourg, Netherlands, Portugal, Spain and Sweden.

4. Czech Republic, Estonia, Hungary, Latvia, Lithuania, Poland, Slovak Republic and Slovenia.

5. Romania and Bulgaria.

6. Cyprus, Malta and Croatia

7. Total Non-EU equals the sum of Other Europe, Total Africa, Total Asia and Total America and Oceania

The estimates shown in this table relate to the number of people in employment and should not be used as a proxy for flows of foreign migrants into the UK.

NON-UK WORKERS

8(2) Unemployment and economic inactivity levels and rates by country of birth and nationality

United Kingdom (thousands of people) not seasonally adjusted

(first published on 12 November 2019)

		Unemployment (all aged 16 and over)					Economically inactive (all aged from 16 to 64)									
		Total ¹	UK	Non-UK	EU27 ²	Non-EU	Total ¹		UK		Non-UK		EU27 ²		Non-EU	
							All econom- ically inactive	Of which: Students ³	All econom- ically inactive	Of which: Students ³	All econom- ically inactive	Of which: Students ³	All econom- ically inactive	Of which: Students ³	All econom- ically inactive	Of which: Students ³
Levels (thousands of people)																
By country of birth	MGTP	DSWD	DT35	DT3F	DTKB	LF9L	LF9W	DTLK	DYUP	DYUR	DYVR	DYVZ	DYWL	DYWR	DZ37	
Jul - Sep 2017	1,500	1,221	279	72	207	8,742	2,151	7,038	1,688	1,687	463	454	152	1,233	311	
Jul - Sep 2018	1,446	1,156	291	85	206	8,589	2,145	6,973	1,711	1,600	431	400	136	1,200	296	
Oct - Dec 2018	1,328	1,068	260	78	182	8,598	2,228	6,957	1,757	1,623	470	399	161	1,224	309	
Jan - Mar 2019	1,292	1,013	279	84	195	8,663	2,373	6,992	1,851	1,654	521	409	159	1,245	362	
Apr - Jun 2019	1,296	1,015	280	74	206	8,659	2,350	7,006	1,864	1,640	485	414	159	1,226	327	
Jul - Sep 2019	1,374	1,115	259	72	187	8,503	2,089	6,933	1,687	1,556	401	395	125	1,161	276	
Change on year	-73	-41	-32	-12	-19	-85	-56	-40	-24	-44	-30	-5	-10	-39	-19	
Change %	-5.0	-3.5	-10.9	-14.7	-9.4	-1.0	-2.6	-0.6	-1.4	-2.7	-6.9	-1.2	-7.7	-3.2	-6.5	
By nationality	MGTP	DSWE	DT39	DTG9	DTKC	LF9L	LF9W	DYTC	DYUQ	DYUS	DYVU	DYWA	DYWM	DYWS	DZGD	
Jul - Sep 2017	1,500	1,325	174	79	94	8,742	2,151	7,688	1,815	1,037	335	451	155	586	180	
Jul - Sep 2018	1,446	1,276	170	80	90	8,589	2,145	7,602	1,846	973	297	378	132	596	165	
Oct - Dec 2018	1,328	1,154	173	76	97	8,598	2,228	7,630	1,892	954	335	377	165	577	170	
Jan - Mar 2019	1,292	1,107	185	86	99	8,663	2,373	7,631	1,982	1,018	390	409	166	609	223	
Apr - Jun 2019	1,296	1,110	186	71	114	8,659	2,350	7,621	1,981	1,023	366	399	162	624	204	
Jul - Sep 2019	1,374	1,206	168	76	92	8,503	2,089	7,546	1,801	940	287	382	125	558	162	
Change on year	-73	-70	-2	-5	3	-85	-56	-56	-45	-34	-10	4	-7	-38	-3	
Change %	-5.0	-5.5	-1.2	-6.0	3.1	-1.0	-2.6	-0.7	-2.5	-3.5	-3.3	1.2	-5.4	-6.4	-1.6	
Rates (%)																
By country of birth	MGUK	DT2W	DT3B	DTJG	DTKD	CRZK		DYTD		DYUT		DYWD		DYWT		
Jul - Sep 2017	4.5	4.4	4.7	2.9	5.9	21.2		20.9		22.5		15.7		26.7		
Jul - Sep 2018	4.3	4.1	5.0	3.6	6.0	20.8		20.6		21.9		14.6		26.2		
Oct - Dec 2018	3.9	3.8	4.4	3.3	5.1	20.8		20.6		21.9		14.6		26.1		
Jan - Mar 2019	3.8	3.6	4.6	3.4	5.5	21.0		20.8		21.8		14.3		26.3		
Apr - Jun 2019	3.8	3.6	4.6	2.9	5.8	21.0		20.8		21.7		14.4		26.3		
Jul - Sep 2019	4.0	4.0	4.3	3.0	5.2	20.6		20.5		20.9		14.1		25.0		
Change on year	-0.2	-0.1	-0.7	-0.6	-0.8	-0.2		-0.1		-1.0		-0.5		-1.2		
By nationality	MGUK	DT2Z	DT3D	DTKA	DTLH	CRZK		DYUO		DYUU		DYWE		DZ36		
Jul - Sep 2017	4.5	4.4	4.6	3.2	7.3	21.2		21.1		21.9		15.7		31.5		
Jul - Sep 2018	4.3	4.2	4.7	3.5	6.8	20.8		20.7		21.3		14.2		31.3		
Oct - Dec 2018	3.9	3.8	4.6	3.2	7.0	20.8		20.8		20.5		14.0		29.5		
Jan - Mar 2019	3.8	3.7	4.8	3.5	7.0	21.0		20.9		21.0		14.4		30.3		
Apr - Jun 2019	3.8	3.7	4.8	2.9	8.1	21.0		20.9		21.2		14.2		31.0		
Jul - Sep 2019	4.0	4.0	4.5	3.3	6.4	20.6		20.6		20.2		14.4		28.1		
Change on year	-0.2	-0.2	-0.2	-0.2	-0.4	-0.2		-0.2		-1.1		0.2		-3.2		

Source: Labour Force Survey
Labour market statistics enquiries: labour.market@ons.gov.uk

1. The total series includes people who do not state their country of birth or nationality. The total levels series therefore do not equal the sum of the "UK" and "Non-UK" series.
2. This series consists of all 27 EU member states excluding the UK.
3. This series consists of those people whose main reason for being economically inactive was because they were students. It does not include all students as some students will be included in the employment and unemployment estimates.

UNEMPLOYMENT

9(1) Unemployment by age and duration

United Kingdom (thousands) seasonally adjusted

All aged 16 & over								All aged 16 - 64							
People		All	Rate (%) ¹	Up to 6 months	Over 6 and up to 12 months	All over 12 months	% over 12 months	All over 24 months	All	Rate (%) ¹	Up to 6 months	Over 6 and up to 12 months	All over 12 months	% over 12 months	All over 24 months
		1	2	3	4	5	6	7	8	9	10	11	12	13	14
		MGSC	MGSX	YBWF	YBWG	YBWH	YBWI	YBWL	LF2I	LF2Q	LF2Y	LF32	LF34	LF36	LF38
	Sep-Nov 2017	1,437	4.3	831	223	383	26.7	202	1,415	4.4	817	216	382	27.0	198
	Sep-Nov 2018	1,370	4.0	807	216	347	25.3	172	1,355	4.2	795	212	348	25.7	170
	Dec-Feb 2019	1,343	3.9	796	200	347	25.8	173	1,323	4.0	786	196	340	25.7	169
	Mar-May 2019	1,292	3.8	766	187	340	26.3	173	1,276	3.9	760	184	332	26.0	168
	Jun-Aug 2019	1,314	3.9	808	173	333	25.3	159	1,297	4.0	804	170	323	24.9	154
	Sep-Nov 2019	1,306	3.8	804	209	293	22.4	160	1,280	3.9	788	205	287	22.4	152
	Change on quarter	-7	0.0	-4	37	-40	-2.9	1	-17	-0.1	-15	34	-37	-2.5	-1
	Change %	-0.6		-0.5	21.3	-11.9		0.6	-1.3		-1.9	20.2	-11.3		-0.8
	Change on year	-64	-0.2	-3	-6	-54	-2.9	-12	-75	-0.3	-6	-7	-61	-3.3	-18
	Change %	-4.6		-0.4	-2.9	-15.5		-6.9	-5.5		-0.8	-3.5	-17.6		-10.5
Men		MGSD	MGSY	MGYK	MGYM	MGYO	YBWJ	YBWM	YBSI	YBTJ	YBWP	YBWS	YBWV	YBWW	YBXB
	Sep-Nov 2017	769	4.3	413	127	229	29.8	127	755	4.4	402	121	231	30.7	125
	Sep-Nov 2018	739	4.1	403	124	212	28.6	113	730	4.2	395	121	214	29.3	112
	Dec-Feb 2019	731	4.1	399	118	215	29.4	114	719	4.2	396	116	208	28.9	111
	Mar-May 2019	712	4.0	395	107	211	29.6	109	704	4.1	391	105	208	29.5	109
	Jun-Aug 2019	727	4.0	419	96	213	29.2	106	716	4.2	418	93	205	28.7	101
	Sep-Nov 2019	729	4.0	434	118	177	24.3	98	713	4.1	423	114	176	24.7	95
	Change on quarter	2	0.0	15	23	-36	-4.9	-8	-4	0.0	5	20	-30	-4.0	-6
	Change %	0.2		3.5	23.5	-16.7		-7.2	-0.5		1.3	22.0	-14.4		-6.1
	Change on year	-10	-0.1	31	-6	-35	-4.4	-15	-17	-0.1	28	-7	-38	-4.6	-17
	Change %	-1.3		7.6	-4.6	-16.4		-13.5	-2.3		7.1	-6.0	-17.7		-15.2
Women		MGSE	MGSZ	MGYL	MGYN	MGYP	YBWK	YBWN	LF2J	LF2R	LF2Z	LF33	LF35	LF37	LF39
	Sep-Nov 2017	668	4.2	418	96	154	23.1	76	660	4.3	415	95	150	22.8	73
	Sep-Nov 2018	631	4.0	404	92	135	21.4	58	626	4.1	400	91	135	21.5	58
	Dec-Feb 2019	611	3.8	397	82	132	21.6	59	603	3.9	390	80	132	22.0	58
	Mar-May 2019	580	3.6	371	80	129	22.2	63	573	3.7	368	80	125	21.7	60
	Jun-Aug 2019	586	3.7	389	77	120	20.5	53	581	3.8	386	77	118	20.3	53
	Sep-Nov 2019	577	3.6	370	91	116	20.1	62	567	3.6	365	91	111	19.6	57
	Change on quarter	-9	-0.1	-19	14	-4	-0.4	8	-13	-0.1	-20	14	-7	-0.7	5
	Change %	-1.6		-4.9	18.5	-3.5		16.0	-2.3		-5.3	18.0	-5.9		9.3
	Change on year	-54	-0.4	-34	-1	-19	-1.3	3	-58	-0.4	-34	0	-24	-1.9	-1
	Change %	-8.5		-8.5	-0.7	-14.1		5.8	-9.3		-8.6	-0.2	-17.5		-1.3
16-17								18-24							
People		All	Rate (%) ¹	Up to 6 months	Over 6 and up to 12 months	All over 12 months	% over 12 months	All over 24 months	All	Rate (%) ¹	Up to 6 months	Over 6 and up to 12 months	All over 12 months	% over 12 months	All over 24 months
		15	16	17	18	19	20	21	22	23	24	25	26	27	28
		YBVH	YBVK	YBXD	YBXG	YBXJ	YBXM	YBXP	YBVN	YBVQ	YBXS	YBXV	YBXY	YBYB	YBYE
	Sep-Nov 2017	118	25.7	92	19	7	5.6	*	417	10.6	274	64	79	18.9	27
	Sep-Nov 2018	103	24.8	83	17	*	*	*	408	10.3	271	64	73	17.8	25
	Dec-Feb 2019	88	21.0	69	12	7	8.1	*	404	10.3	276	66	63	15.6	16
	Mar-May 2019	83	19.6	66	11	7	8.1	*	410	10.7	273	67	70	17.0	17
	Jun-Aug 2019	86	20.3	66	14	6	6.5	*	408	10.8	284	47	78	19.1	18
	Sep-Nov 2019	94	21.4	78	13	*	*	*	388	10.2	262	71	55	14.1	17
	Change on quarter	8	1.1	11	-1	*	*	*	-20	-0.6	-22	25	-23	-5.0	-2
	Change %	9.2		17.4	-7.2	*	*	*	-5.0		-7.7	53.3	-29.9		-9.2
	Change on year	-10	-3.4	-5	-4	*	*	*	-20	-0.1	-9	7	-18	-3.7	-9
	Change %	-9.4		-6.0	-22.4	*	*	*	-4.9		-3.3	11.0	-24.8		-34.5
Men		YBVI	YBVL	YBXE	YBXH	YBKK	YBXN	YBXQ	YBVO	YBVR	YBXT	YBXW	YBXZ	YBYC	YBYF
	Sep-Nov 2017	58	26.5	47	8	*	*	*	242	11.8	143	42	57	23.7	20
	Sep-Nov 2018	53	26.4	40	10	*	*	*	236	11.3	145	38	54	22.8	22
	Dec-Feb 2019	50	23.8	38	7	6	11.4	*	248	12.0	162	43	43	17.3	13
	Mar-May 2019	47	23.0	38	*	*	*	*	249	12.5	156	43	50	20.1	13
	Jun-Aug 2019	50	24.2	38	8	*	*	*	246	12.4	161	30	56	22.7	14
	Sep-Nov 2019	53	25.7	44	7	*	*	*	240	12.0	153	49	38	15.9	9
	Change on quarter	3	1.4	6	-1	*	*	*	-6	-0.4	-8	20	-18	-6.8	-4
	Change %	5.5		15.9	-13.8	*	*	*	-2.5		-5.0	66.1	-31.8		-33.0
	Change on year	0	-0.7	4	-3	*	*	*	3	0.7	8	11	-16	-6.9	-12
	Change %	-0.4		9.8	-31.2	*	*	*	1.4		5.5	29.1	-29.2		-57.7
Women		YBVJ	YBVM	YBXF	YBXI	YBXL	YBXO	YBXR	YBVP	YBVS	YBXU	YBXX	YBYA	YBYD	YBYG
	Sep-Nov 2017	60	25.1	45	11	*	*	*	175	9.3	131	22	21	12.3	7
	Sep-Nov 2018	50	23.4	42	7	*	*	*	172	9.2	126	26	19	11.0	*
	Dec-Feb 2019	38	18.1	32	5	*	*	*	156	8.3	113	22	20	13.0	*
	Mar-May 2019	36	16.4	28	6	*	*	*	160	8.7	117	24	20	12.3	*
	Jun-Aug 2019	36	16.5	28	6	*	*	*	162	9.1	123	17	22	13.6	5
	Sep-Nov 2019	41	17.6	34	6	*	*	*	148	8.2	109	22	17	11.2	8
	Change on quarter	5	1.1	5	0	*	*	*	-14	-0.9	-14	5	-6	-2.5	3
	Change %	14.5		19.4	1.3	*	*	*	-8.6		-11.2	31.1	-25.1		59.7
	Change on year	-10	-5.8	-9	-1	*	*	*	-23	-1.0	-17	-4	-2	0.1	*
	Change %	-18.9		-20.9	-9.6	*	*	*	-13.5		-13.4	-15.0	-12.4		*

Relationship between columns: 1=3+4+5; 8=10+11+12; 15=17+18+19; 22=24+25+26.

¹ Denominator = economically active for that age group.

Source: Labour Force Survey

Labour market statistics enquiries: labour.market@ons.gov.uk

UNEMPLOYMENT

9(2) Unemployment by age and duration

United Kingdom (thousands) seasonally adjusted

		25-49							50 and over						
People		All	Rate(%) ¹	Up to 6 months	Over 6 and up to 12 months	All over 12 months	% over 12 months	All over 24 months	All	Rate (%) ¹	Up to 6 months	Over 6 and up to 12 months	All over 12 months	% over 12 months	All over 24 months
		1	2	3	4	5	6	7	8	9	10	11	12	13	14
		MGVI	MGXB	YBYH	YBYK	YBYN	YBYQ	YBYT	YBVT	YBVW	YBYW	YBYZ	YBZC	YBZF	YBZI
	Sep-Nov 2017	605	3.2	336	93	176	29.1	98	298	2.9	129	47	122	41.0	77
	Sep-Nov 2018	575	3.0	326	91	158	27.4	77	284	2.7	128	44	112	39.6	68
	Dec-Feb 2019	561	3.0	322	83	156	27.8	85	289	2.7	128	40	121	41.8	71
	Mar-May 2019	524	2.8	299	68	156	29.8	93	275	2.6	128	41	107	38.7	63
	Jun-Aug 2019	548	2.9	324	69	155	28.2	79	271	2.5	134	43	94	34.8	59
	Sep-Nov 2019	542	2.8	317	86	138	25.6	78	283	2.6	147	39	97	34.3	66
	Change on quarter	-7	0.0	-7	17	-16	-2.7	-2	12	0.1	13	-4	3	-0.5	6
	Change %	-1.2		-2.2	24.5	-10.6		-2.2	4.3		9.7	-9.2	2.7		10.8
	Change on year	-33	-0.2	-9	-5	-19	-1.9	0	-1	-0.1	19	-5	-15	-5.3	-3
	Change %	-5.8		-2.8	-5.2	-12.2		0.1	-0.3		15.3	-11.3	-13.7		-4.2
Men		MGVJ	MGXC	YBYI	YBYL	YBYO	YBYR	YBYU	YBVU	YBVX	YBYX	YBZA	YBZD	YBZG	YBZJ
	Sep-Nov 2017	294	2.9	151	47	96	32.7	60	175	3.2	72	30	74	41.9	46
	Sep-Nov 2018	294	2.9	154	52	87	29.7	51	155	2.7	64	24	67	43.4	40
	Dec-Feb 2019	272	2.7	138	44	89	32.9	58	161	2.8	60	24	77	47.7	42
	Mar-May 2019	266	2.6	140	36	90	33.7	59	150	2.6	61	23	66	44.2	38
	Jun-Aug 2019	272	2.7	147	32	93	34.2	50	159	2.8	73	26	60	37.4	42
	Sep-Nov 2019	276	2.7	157	40	78	28.4	48	160	2.8	80	22	59	36.5	41
	Change on quarter	4	0.0	10	9	-15	-5.8	-2	1	0.0	7	-5	-1	-0.8	-1
	Change %	1.6		6.9	27.6	-15.7		-3.1	0.7		9.1	-17.6	-1.6		-2.5
	Change on year	-18	-0.2	3	-12	-9	-1.4	-3	5	0.0	16	-2	-9	-6.9	1
	Change %	-6.1		1.9	-22.5	-10.4		-5.7	3.3		24.6	-7.9	-13.0		2.1
Women		MGVK	MGXD	YBYJ	YBYM	YBYP	YBYS	YBYV	YBVV	YBVY	YBYV	YBZB	YBZE	YBZH	YBZK
	Sep-Nov 2017	311	3.5	184	47	80	25.7	38	122	2.5	57	17	49	39.7	31
	Sep-Nov 2018	281	3.2	172	38	70	25.0	26	128	2.6	63	20	45	35.0	29
	Dec-Feb 2019	289	3.2	184	39	66	22.9	27	128	2.5	68	16	44	34.4	29
	Mar-May 2019	258	2.9	159	32	67	25.8	35	125	2.5	67	18	40	32.2	25
	Jun-Aug 2019	276	3.1	177	37	62	22.4	29	112	2.2	61	16	35	31.1	18
	Sep-Nov 2019	266	3.0	160	46	60	22.6	29	122	2.4	67	17	38	31.3	25
	Change on quarter	-11	-0.1	-17	8	-2	0.2	0	10	0.2	6	1	4	0.2	7
	Change %	-3.9		-9.7	21.8	-2.9		-0.7	9.4		10.3	4.4	10.1		42.2
	Change on year	-15	-0.2	-12	7	-10	-2.4	3	-6	-0.2	4	-3	-7	-3.7	-4
	Change %	-5.4		-7.0	18.4	-14.5		11.5	-4.7		5.8	-15.4	-14.7		-13.0

Relationship between columns: 1=3+4+5; 8=10+11+12.

¹Denominator = economically active for that age group.

Source: Labour Force Survey

Labour market statistics enquiries: labour.market@ons.gov.uk

ECONOMIC ACTIVITY AND INACTIVITY

10 Economic activity by age

United Kingdom (thousands) seasonally adjusted

	All aged 16 & over	16 - 64	16 - 17	18 - 24	25 - 34	35 - 49	50 - 64	65+
	1	2	3	4	5	6	7	8

Economically active

People	MGSF	LF2K	YBZL	YBZO	YBZR	YBZU	LF3A	LFK8
Sep-Nov 2017	33,650	32,446	458	3,918	7,721	11,178	9,171	1,204
Sep-Nov 2018	33,912	32,627	416	3,949	7,747	11,177	9,338	1,285
Dec-Feb 2019	34,063	32,761	420	3,933	7,812	11,168	9,428	1,302
Mar-May 2019	34,041	32,698	425	3,842	7,818	11,157	9,455	1,343
Jun-Aug 2019	34,006	32,663	423	3,774	7,822	11,142	9,501	1,344
Sep-Nov 2019	34,207	32,857	438	3,809	7,879	11,180	9,552	1,350
Change on quarter	201	195	15	34	57	38	51	6
Change %	0.6	0.6	3.5	0.9	0.7	0.3	0.5	0.5
Change on year	295	230	22	-141	132	4	214	65
Change %	0.9	0.7	5.2	-3.6	1.7	0.0	2.3	5.1
Men	MGSG	YBSL	YBZM	YBZP	YBZS	YBZV	YBZY	YCAE
Sep-Nov 2017	17,850	17,108	220	2,043	4,145	5,895	4,806	742
Sep-Nov 2018	18,013	17,216	201	2,090	4,176	5,873	4,877	797
Dec-Feb 2019	18,043	17,252	211	2,061	4,191	5,869	4,919	791
Mar-May 2019	17,993	17,185	202	2,000	4,200	5,870	4,914	807
Jun-Aug 2019	17,984	17,201	206	1,982	4,195	5,877	4,940	782
Sep-Nov 2019	18,046	17,255	205	1,997	4,216	5,869	4,967	790
Change on quarter	62	54	-1	15	21	-8	26	8
Change %	0.3	0.3	-0.5	0.8	0.5	-0.1	0.5	1.0
Change on year	32	39	4	-92	41	-4	90	-7
Change %	0.2	0.2	2.2	-4.4	1.0	-0.1	1.9	-0.9
Women	MGSH	LF2L	YBZN	YBZQ	YBZT	YBZW	LF3B	LFK9
Sep-Nov 2017	15,800	15,337	238	1,875	3,576	5,284	4,365	463
Sep-Nov 2018	15,899	15,411	215	1,860	3,571	5,303	4,461	488
Dec-Feb 2019	16,021	15,509	209	1,871	3,621	5,299	4,509	511
Mar-May 2019	16,048	15,512	222	1,842	3,619	5,287	4,542	536
Jun-Aug 2019	16,023	15,462	217	1,793	3,627	5,265	4,560	561
Sep-Nov 2019	16,161	15,602	232	1,811	3,663	5,311	4,585	560
Change on quarter	139	140	16	19	35	46	24	-2
Change %	0.9	0.9	7.2	1.0	1.0	0.9	0.5	-0.3
Change on year	263	191	17	-48	91	8	123	72
Change %	1.7	1.2	7.9	-2.6	2.6	0.1	2.8	14.8

Economic activity rates (%)¹

People	MGWG	LF22	YCAG	YCAJ	YCAM	YCAP	LF2C	LFL2
Sep-Nov 2017	63.7	78.8	32.4	69.5	86.8	87.3	73.8	10.3
Sep-Nov 2018	63.8	79.0	29.9	70.9	86.7	87.6	74.0	10.9
Dec-Feb 2019	64.0	79.3	30.2	70.9	87.3	87.6	74.5	11.0
Mar-May 2019	63.9	79.1	30.5	69.5	87.3	87.6	74.4	11.3
Jun-Aug 2019	63.8	79.0	30.3	68.5	87.3	87.6	74.5	11.2
Sep-Nov 2019	64.1	79.4	31.2	69.4	87.9	87.9	74.7	11.2
Change on quarter	0.3	0.4	0.8	0.9	0.7	0.3	0.2	0.0
Change on year	0.2	0.4	1.3	-1.5	1.3	0.3	0.7	0.4
Men	MGWH	MGSP	YCAH	YCAK	YCAN	YCAQ	MGWQ	MGWT
Sep-Nov 2017	69.1	83.6	30.3	71.0	93.3	93.2	78.8	13.8
Sep-Nov 2018	69.3	83.9	28.2	73.4	93.2	93.2	78.8	14.6
Dec-Feb 2019	69.3	84.0	29.7	72.7	93.3	93.3	79.2	14.4
Mar-May 2019	69.0	83.6	28.4	70.8	93.4	93.4	78.8	14.6
Jun-Aug 2019	68.9	83.6	28.9	70.5	93.2	93.5	79.0	14.1
Sep-Nov 2019	69.0	83.8	28.6	71.3	93.6	93.4	79.2	14.2
Change on quarter	0.1	0.2	-0.3	0.8	0.5	-0.1	0.2	0.1
Change on year	-0.3	0.0	0.4	-2.2	0.5	0.2	0.4	-0.4
Women	MGWI	LF23	YCAI	YCAL	YCAO	YCAR	LF2D	LFL3
Sep-Nov 2017	58.5	74.0	34.5	67.9	80.4	81.4	69.0	7.4
Sep-Nov 2018	58.6	74.3	31.7	68.2	80.1	82.1	69.4	7.7
Dec-Feb 2019	59.0	74.7	30.7	68.9	81.2	82.1	69.9	8.0
Mar-May 2019	59.0	74.7	32.7	68.1	81.1	82.0	70.2	8.4
Jun-Aug 2019	58.9	74.4	31.9	66.5	81.3	81.7	70.2	8.7
Sep-Nov 2019	59.3	75.1	33.9	67.4	82.2	82.5	70.4	8.7
Change on quarter	0.4	0.6	2.1	0.9	0.9	0.7	0.1	-0.1
Change on year	0.7	0.8	2.3	-0.8	2.1	0.4	0.9	1.0

Relationship between columns: 1= 2+8; 2=3+4+5+6+7.

¹Denominator = all persons in the relevant age group.

Data source: Labour Force Survey

Labour market statistics enquiries: labour.market@ons.gov.uk

ECONOMIC ACTIVITY AND INACTIVITY

11 Economic inactivity: reasons

United Kingdom (thousands) seasonally adjusted

	Economic inactivity by reason (aged 16 to 64)								Wanting/not wanting a job (aged 16 to 64)	
	Total aged 16-64								Does not want job	Wants a job ¹
		Student	Looking after family / home	Temp sick	Long-term sick	Discouraged workers	Retired	Other		
	1	2	3	4	5	6	7	8	9	10
	LF2M	LF63	LF65	LF67	LF69	LFL8	LF6B	LF6D	LFL9	LFM2
People										
Sep-Nov 2017	8,743	2,343	2,100	191	1,982	37	1,158	931	6,772	1,970
Sep-Nov 2018	8,650	2,265	2,048	179	1,992	35	1,123	1,008	6,799	1,851
Dec-Feb 2019	8,536	2,227	2,008	189	1,979	33	1,111	990	6,707	1,830
Mar-May 2019	8,619	2,289	2,014	165	2,016	31	1,120	984	6,776	1,844
Jun-Aug 2019	8,676	2,316	1,980	169	2,069	39	1,120	982	6,792	1,884
Sep-Nov 2019	8,506	2,263	1,934	161	2,065	30	1,114	939	6,646	1,859
Change on quarter	-171	-53	-46	-8	-4	-9	-6	-44	-146	-25
Change %	-2.0	-2.3	-2.3	-4.6	-0.2	-23.1	-0.6	-4.4	-2.1	-1.3
Change on year	-145	-2	-115	-18	73	-5	-9	-69	-152	8
Change %	-1.7	-0.1	-5.6	-9.9	3.7	-14.0	-0.8	-6.9	-2.2	0.4
Men	YBSO	BEEEX	BEAQ	BEDI	BEDL	YCFP	BEDR	BEDU	YBWA	YBWD
Sep-Nov 2017	3,363	1,179	238	91	962	21	469	403	2,536	827
Sep-Nov 2018	3,314	1,133	228	84	948	24	475	423	2,566	747
Dec-Feb 2019	3,290	1,122	212	94	939	22	491	409	2,557	733
Mar-May 2019	3,368	1,168	224	86	948	20	500	422	2,618	751
Jun-Aug 2019	3,366	1,160	227	73	962	24	508	411	2,598	768
Sep-Nov 2019	3,326	1,147	232	66	961	17	504	399	2,558	767
Change on quarter	-40	-13	5	-7	-1	-7	-5	-12	-39	-1
Change %	-1.2	-1.1	2.1	-9.9	-0.1	-27.6	-0.9	-2.8	-1.5	-0.1
Change on year	12	14	4	-18	12	-6	29	-23	-8	20
Change %	0.4	1.2	1.7	-21.1	1.3	-26.5	6.0	-5.5	-0.3	2.7
Women	LF2N	LF64	LF66	LF68	LF6A	LFM3	LF6C	LF6E	LFM4	LFM5
Sep-Nov 2017	5,380	1,164	1,862	101	1,020	16	689	528	4,237	1,143
Sep-Nov 2018	5,336	1,133	1,820	95	1,043	11	648	585	4,232	1,104
Dec-Feb 2019	5,246	1,105	1,796	95	1,039	10	620	580	4,150	1,096
Mar-May 2019	5,251	1,122	1,790	78	1,069	11	619	562	4,158	1,093
Jun-Aug 2019	5,310	1,156	1,753	95	1,107	15	612	571	4,194	1,116
Sep-Nov 2019	5,180	1,116	1,702	95	1,104	13	610	539	4,088	1,092
Change on quarter	-131	-40	-51	-1	-3	-2	-2	-32	-106	-24
Change %	-2.5	-3.5	-2.9	-0.6	-0.2	-16.0	-0.3	-5.6	-2.5	-2.2
Change on year	-157	-16	-119	0	61	1	-37	-46	-144	-12
Change %	-2.9	-1.4	-6.5	-0.2	5.8	11.9	-5.8	-7.9	-3.4	-1.1
Percentage of economically inactive aged from 16 to 64 (%)										
People	LF6V	LF6X	LF6Z	LF73	LF75	LF77	LF79	LF7B	LF7D	LF7F
Sep-Nov 2017	100	26.8	24.0	2.2	22.7	0.4	13.2	10.7	77.5	22.5
Sep-Nov 2018	100	26.2	23.7	2.1	23.0	0.4	13.0	11.7	78.6	21.4
Dec-Feb 2019	100	26.1	23.5	2.2	23.2	0.4	13.0	11.6	78.6	21.4
Mar-May 2019	100	26.6	23.4	1.9	23.4	0.4	13.0	11.4	78.6	21.4
Jun-Aug 2019	100	26.7	22.8	1.9	23.8	0.5	12.9	11.3	78.3	21.7
Sep-Nov 2019	100	26.6	22.7	1.9	24.3	0.4	13.1	11.0	78.1	21.9
Men	BEBP	BEEH	BEEK	BEEN	BEEQ	BEET	BEEW	BEEZ	BEAS	BEGT
Sep-Nov 2017	100	35.1	7.1	2.7	28.6	0.6	13.9	12.0	75.4	24.6
Sep-Nov 2018	100	34.2	6.9	2.5	28.6	0.7	14.3	12.8	77.4	22.6
Dec-Feb 2019	100	34.1	6.4	2.9	28.5	0.7	14.9	12.4	77.7	22.3
Mar-May 2019	100	34.7	6.6	2.6	28.1	0.6	14.9	12.5	77.7	22.3
Jun-Aug 2019	100	34.5	6.7	2.2	28.6	0.7	15.1	12.2	77.2	22.8
Sep-Nov 2019	100	34.5	7.0	2.0	28.9	0.5	15.1	12.0	76.9	23.1
Women	LF6W	LF6Y	LF72	LF74	LF76	LF78	LF7A	LF7C	LF7E	LF7G
Sep-Nov 2017	100	21.6	34.6	1.9	19.0	0.3	12.8	9.8	78.7	21.3
Sep-Nov 2018	100	21.2	34.1	1.8	19.5	0.2	12.1	11.0	79.3	20.7
Dec-Feb 2019	100	21.1	34.2	1.8	19.8	0.2	11.8	11.1	79.1	20.9
Mar-May 2019	100	21.4	34.1	1.5	20.4	0.2	11.8	10.7	79.2	20.8
Jun-Aug 2019	100	21.8	33.0	1.8	20.8	0.3	11.5	10.8	79.0	21.0
Sep-Nov 2019	100	21.6	32.9	1.8	21.3	0.2	11.8	10.4	78.9	21.1

Relationship between columns : 1=2+3+4+5+6+7+8; 1=9+10.

Data Source: Labour Force Survey.
Labour market statistics enquiries: labour.market@ons.gov.uk

1. This series comprises those who say they would like a regular paid job, but who do not meet the internationally agreed definition of unemployment because they have not been looking for work in the last four weeks and/or they were unable to start working within two weeks.

ECONOMIC ACTIVITY AND INACTIVITY

12 Educational status, economic activity and inactivity of people aged from 16 to 24

September - November 2019

United Kingdom (thousands) seasonally adjusted

All aged 16 to 24					In full-time education (FTE)				Not in full-time education (FTE) ¹			
Total	Employed	Unemployed	Economically inactive		Total	Employed ²	Unemployed ²	Economically inactive	Total	Employed	Unemployed	Economically inactive
1	2	3	4		5	6	7	8	9	10	11	12
Levels												
People												
16-17	1,404	344	94	966	1,197	254	61	882	207	90	33	84
18-24	5,489	3,420	388	1,680	1,819	614	72	1,133	3,669	2,806	316	547
16-24	6,892	3,765	482	2,646	3,016	869	132	2,015	3,877	2,896	349	631
Men												
16-17	719	153	53	514	599	103	28	468	120	50	24	46
18-24	2,803	1,758	240	805	871	262	35	575	1,932	1,496	205	231
16-24	3,522	1,910	293	1,319	1,470	364	63	1,042	2,052	1,546	229	277
Women												
16-17	685	192	41	452	598	152	32	414	87	40	9	38
18-24	2,686	1,663	148	875	948	352	37	559	1,738	1,310	111	316
16-24	3,371	1,854	189	1,327	1,546	504	69	973	1,825	1,350	120	354
Changes on quarter												
People												
16-17	9	7	8	-5	1	2	2	-3	8	5	6	-2
18-24	-20	54	-20	-54	-39	5	-7	-37	19	50	-13	-17
16-24	-11	61	-12	-60	-38	7	-5	-40	28	54	-7	-19
Men												
16-17	5	-4	3	6	0	-2	-1	3	5	-2	4	3
18-24	-10	22	-6	-26	-19	6	2	-26	8	15	-8	1
16-24	-6	18	-4	-20	-19	4	0	-23	13	14	-4	3
Women												
16-17	5	10	5	-11	1	4	3	-6	4	6	2	-5
18-24	-10	33	-14	-28	-21	-2	-9	-11	11	34	-5	-18
16-24	-5	43	-9	-39	-20	2	-5	-17	15	41	-3	-22
Rates(%)³												
People												
16-17		24.5	21.4	68.8		21.3	19.2	73.7		43.4	26.9	40.6
18-24		62.3	10.2	30.6		33.8	10.5	62.3		76.5	10.1	14.9
16-24		54.6	11.3	38.4		28.8	13.2	66.8		74.7	10.8	16.3
Men												
16-17		21.2	25.7	71.4		17.1	21.7	78.1		41.6	32.7	38.1
18-24		62.7	12.0	28.7		30.0	11.8	65.9		77.4	12.0	12.0
16-24		54.2	13.3	37.5		24.8	14.8	70.9		75.3	12.9	13.5
Women												
16-17		28.0	17.6	66.1		25.4	17.4	69.3		45.8	18.1	44.1
18-24		61.9	8.2	32.6		37.2	9.5	58.9		75.4	7.8	18.2
16-24		55.0	9.3	39.4		32.6	12.0	62.9		74.0	8.2	19.4
Changes on quarter												
People												
16-17		0.3	1.1	-0.8		0.2	0.4	-0.3		0.5	2.7	-2.7
18-24		1.2	-0.6	-0.9		1.0	-1.0	-0.7		1.0	-0.5	-0.5
16-24		1.0	-0.4	-0.8		0.6	-0.5	-0.5		0.9	-0.4	-0.6
Men												
16-17		-0.7	1.4	0.3		-0.3	-0.4	0.5		-3.2	4.5	0.7
18-24		1.0	-0.4	-0.8		1.3	0.2	-1.6		0.5	-0.5	0.0
16-24		0.6	-0.2	-0.5		0.6	-0.1	-0.7		0.2	-0.3	0.1
Women												
16-17		1.3	1.1	-2.1		0.6	1.1	-1.2		5.6	1.1	-7.4
18-24		1.4	-0.9	-0.9		0.6	-1.9	0.2		1.5	-0.6	-1.1
16-24		1.4	-0.6	-1.1		0.6	-0.9	-0.3		1.6	-0.5	-1.4

Relationship between columns: 1=5+9; 2=6+10; 3=7+11.

Source: Labour Force Survey
Labour market statistics enquiries: labour.market@ons.gov.uk

1. Not in full-time education includes people in part-time education and/or some form of training. Estimates of the number of young people who were not in employment, education or training ("NEET") cannot therefore be derived from this table. Estimates of young people who were NEET are published separately at:

<https://www.ons.gov.uk/employmentandlabourmarket/peopleinwork/unemployment/bulletins/youngpeoplenotineducationemploymentortrainingneet/latest>

2. People in full-time education are employed if they have a part-time job or unemployed if they are looking for part-time employment.

3. Denominator = all persons in the relevant age group for economically active, total in employment and economically inactive; economically active for unemployment.

17 International comparisons of employment and unemployment

Employment rates as published by EUROSTAT: (not seasonally adjusted)					Unemployment rates as published by EUROSTAT on 09 January 2020 (seasonally adjusted)					
		Latest period	Employment rate (%) ^{1,2}	Change on year %			Latest Period	Unemployment rate (%) ³	Change on month %	Change on year %
European Union (EU)					European Union (EU)					
Austria	YXSN	Jul-Sep 19	74.2	0.4	Austria	ZXDS	Nov 19	4.2	-0.2	-0.5
Belgium	YXSO	Jul-Sep 19	65.8	0.8	Belgium	ZXDI	Nov 19	5.2	0.1	-0.6
Bulgaria	A495	Jul-Sep 19	71.4	2.6	Bulgaria	A492	Nov 19	3.7	-0.1	-1.1
Croatia	GUMI	Jul-Sep 19	63.0	1.1	Croatia	GUMJ	Nov 19	6.5	0.0	-1.0
Cyprus	A4AC	Jul-Sep 19	70.8	1.3	Cyprus	A4AN	Nov 19	7.7	0.4	0.2
Czech Republic	A4AD	Jul-Sep 19	75.2	0.2	Czech Republic	A4AO	Nov 19	2.2	0.0	0.2
Denmark	YXSP	Jul-Sep 19	75.5	0.8	Denmark	ZXDJ	Nov 19	5.2	0.0	-0.1
Estonia	A4AE	Jul-Sep 19	76.2	1.3	Estonia	A4AP	Oct 19	4.2	-0.1	-1.1
Finland	YXSQ	Jul-Sep 19	74.0	0.9	Finland	ZXDU	Nov 19	6.7	0.0	-0.1
France	YXSR	Jul-Sep 19	65.5	-0.2	France	ZXDN	Nov 19	8.4	-0.1	-0.5
Germany	YXSS	Jul-Sep 19	77.0	0.7	Germany	ZXDK	Nov 19	3.1	0.0	-0.2
Greece	YXST	Jul-Sep 19	57.4	1.5	Greece	ZXDL	Oct 19	16.6	-0.2	-1.9
Hungary	A4AF	Jul-Sep 19	70.3	0.8	Hungary	A4AQ	Oct 19	3.5	0.0	-0.2
Ireland	YXSU	Jul-Sep 19	69.6	0.5	Ireland	ZXDO	Dec 19	4.8	0.0	-0.7
Italy	YXSV	Jul-Sep 19	59.4	0.5	Italy	ZXDP	Nov 19	9.7	0.0	-0.8
Latvia	A4AG	Jul-Sep 19	73.1	0.3	Latvia	A4AR	Nov 19	6.3	0.2	-0.6
Lithuania	A4AH	Jul-Sep 19	73.2	-0.8	Lithuania	A4AS	Nov 19	6.4	0.0	0.6
Luxembourg	YXSW	Jul-Sep 19	67.9	1.0	Luxembourg	ZXDQ	Nov 19	5.5	0.0	0.1
Malta	A4AI	Jul-Sep 19	73.7	0.4	Malta	A4AT	Nov 19	3.5	0.1	-0.1
Netherlands	YXSX	Jul-Sep 19	78.4	0.7	Netherlands	ZXDR	Nov 19	3.5	0.0	0.0
Poland	A4AJ	Jul-Sep 19	68.9	0.9	Poland	A4AU	Nov 19	3.2	0.0	-0.6
Portugal	YXSX	Jul-Sep 19	71.0	0.8	Portugal	ZXDT	Nov 19	6.7	0.2	0.0
Romania	A494	Jul-Sep 19	66.7	0.5	Romania	A48Z	Nov 19	4.0	0.0	-0.1
Slovak Republic	A4AK	Jul-Sep 19	68.5	0.6	Slovak Republic	A4AV	Nov 19	5.7	0.0	-0.4
Slovenia	A4AL	Jul-Sep 19	72.1	0.2	Slovenia	A4AW	Nov 19	4.6	-0.1	0.2
Spain	YXSZ	Jul-Sep 19	63.5	0.5	Spain	ZXDM	Nov 19	14.1	-0.1	-0.4
Sweden	YXTA	Jul-Sep 19	78.1	-0.4	Sweden ⁵	ZXDV	Nov 19	7.3	0.7	1.0
United Kingdom (*)	ANZ6	Jul-Sep 19	75.1	0.4	United Kingdom (*)	ZXDW	Sep 19	3.7	-0.1	-0.3
Total EU⁴	A496	Jul-Sep 19	69.6	0.6	Total EU⁴	A493	Nov 19	6.3	0.0	-0.3
Eurozone ⁴	YXTC	Jul-Sep 19	68.2	0.4	Eurozone ⁴	ZXDH	Nov 19	7.5	0.0	-0.4
Employment rates published by the OECD (seasonally adjusted)					Unemployment rates as published by national statistical offices (seasonally adjusted)					
Canada	A48O	Oct-Dec 19	74.4	0.3	Canada	ZXDZ	Nov 19	5.9	0.4	0.3
Japan	A48P	Jul-Sep 19	77.9	0.9	Japan	ZXDY	Dec 19	2.2	-0.2	-0.3
United States	A48Q	Oct-Dec 19	71.7	0.7	United States	ZXDX	Dec 19	3.5	0.0	-0.4

Sources: EUROSTAT, OECD, national statistical offices.
Labour market statistics enquiries: labour.market@ons.gov.uk

(*) Note: The UK rates shown in this table are as published by EUROSTAT (the EUs statistical office). See Table 1 for the latest rates for the UK as published by ONS.

- All employment rates shown in this table are for those aged from 15 to 64 except for the rate for the United States published by OECD which are for those aged from 16 to 64.
- The employment rates for the EU are published by EUROSTAT and are not seasonally adjusted. EUROSTAT do not publish seasonally adjusted (SA) employment rates but SA rates for some EU countries are published by OECD. These OECD employment rates are available on our website at [dataset A10](#).
- Unemployment rates published by EUROSTAT for most EU countries (but not for the UK), are calculated by extrapolating from the most recent LFS data using monthly registered unemployment data. A standard population basis (15-74) is used by EUROSTAT except for Spain, Italy and the UK (16-74). The unemployment rate for the US is based on those aged 16 and over, but the rates for Canada and Japan are for those aged 15 and over. All unemployment rates shown in this table are seasonally adjusted.
- The "Total EU" series consist of all 28 EU countries. The Eurozone figures consist of the following EU countries: Austria, Belgium, Cyprus, Estonia, Finland, France, Germany, Greece, Ireland, Italy, Latvia, Lithuania, Luxembourg, Malta, Netherlands, Portugal, Slovak Republic, Slovenia and Spain.
- The EU unemployment rates are as published on the EUROSTAT database. For Sweden the rates on the database differ from those shown in the EUROSTAT News Release published on 29 November 2019. This is because the figures for Sweden on the database are seasonally adjusted estimates but the figures for Sweden shown in the News Release are the trend component.

18 Labour disputes

United Kingdom, not seasonally adjusted

	Working days lost (thousands)	Working days lost in the Public Sector (thousands) ^{1,2}	Working days lost in the Private Sector (thousands) ^{1,2}	Number of stoppages ³	Number of stoppages in the Public Sector	Number of stoppages in the Private Sector	Workers involved (thousands) ^{1,3}
	1	2	3	4	5	6	7
	BBFW	F8XZ	F8Y2	BLUU	F8Y3	F8Y4	BLUT
2017 November	8	0	8	11	1	10	3
2018 November	11	0	11	8	1	7	3
December	5	1	5	7	2	5	1
2019 January	11	1	11	10	2	8	6
February	7	2	5	11	5	6	6
March	9	1	8	14	6	8	5
April	2	1	2	8	1	7	1
May	10	1	10	14	2	12	5
June	12	1	12	24	5	19	3
July	11	4	7	24	9	15	7
August	7	1	6	10	2	8	2
September	9	1	8	14	3	11	3
October	8	1	7	10	4	6	2
November (p)	83	14	68	12	4	8	19
Cumulative totals 12 months to:							
Nov 18	277	30	248	85	26	59	42
Nov 19 (p)	175	27	147	98	28	70	40

Relationship between columns 1=2+3; 4=5+6

Data source: ONS Labour Disputes Survey
Labour disputes enquiries 01633 455400

- Estimates of working days lost and workers involved are shown to the nearest thousand. Unrounded estimates of less than 500 therefore round to zero.
- Due to rounding the working days lost for the public and private sectors may not add up to the total working days lost.
- The latest 12 month cumulative totals for the figures in these columns will not necessarily equal the sum of the 12 months as some disputes continue for over one month. These disputes appear in each month's data, but only once in the total.

REDUNDANCIES

22 Redundancies: level and rates ¹

United Kingdom (seasonally adjusted)

	People (aged 16 and over)		Men (aged 16 and over)		Women (aged 16 and over)	
	Level (000s)	Rate ¹	Level (000s)	Rate ¹	Level (000s)	Rate ¹
	BEAO	BEIR	BEIU	BEIX	BEJA	BEJD
Sep-Nov 2017	109	4.0	60	4.4	50	3.7
Sep-Nov 2018	91	3.3	46	3.3	45	3.4
Dec-Feb 2019	88	3.2	56	4.0	32	2.4
Mar-May 2019	101	3.6	55	4.0	45	3.3
Jun-Aug 2019	115	4.1	58	4.2	56	4.1
Sep-Nov 2019	115	4.2	63	4.6	52	3.8
change on quarter	0	0.0	5	0.4	-5	-0.3
change %	0.2		8.7		-8.6	
change on year	24	0.9	18	1.3	6	0.4
change %	26.2		38.9		13.4	

Data source: Labour Force Survey

Labour market statistics enquiries: labour.market@ons.gov.uk

1. The redundancy rate is the ratio of the redundancy level for the given quarter to the seasonally adjusted number of employees in the previous quarter, multiplied by 1,000.