

Statistical bulletin

Employment in the UK: October 2019

Estimates of employment, unemployment and economic inactivity for the UK.



Contact:
Bob Watson
labour.market@ons.gov.uk
+44 (0)1633 455070

Release date:
15 October 2019

Next release:
12 November 2019

Table of contents

1. [Other pages in this release](#)
2. [Main points for June to August 2019](#)
3. [Analysis of employment in the UK](#)
4. [Employment data](#)
5. [Glossary](#)
6. [Measuring the data](#)
7. [Strengths and limitations](#)
8. [You might also be interested in](#)

1 . Other pages in this release

Other commentary from the latest labour market data can be found on the following pages:

- [Labour market overview](#)
- [Average weekly earnings in Great Britain](#)
- [Vacancies and jobs](#)

2 . Main points for June to August 2019

- The UK employment rate was estimated at 75.9%; higher than a year earlier (75.6%) but 0.2 percentage points lower than last quarter.
- The UK unemployment rate was estimated at 3.9%; this is lower than a year earlier (4.0%) but 0.1 percentage points higher than last quarter.
- The UK economic inactivity rate was estimated at 21.0%; this is lower than a year earlier (21.2%) but 0.1 percentage points higher on the quarter.

The data in this bulletin come from the Labour Force Survey, a survey of households. It is not practical to survey every household each quarter, so these statistics are estimates based on a large sample.

3 . Analysis of employment in the UK

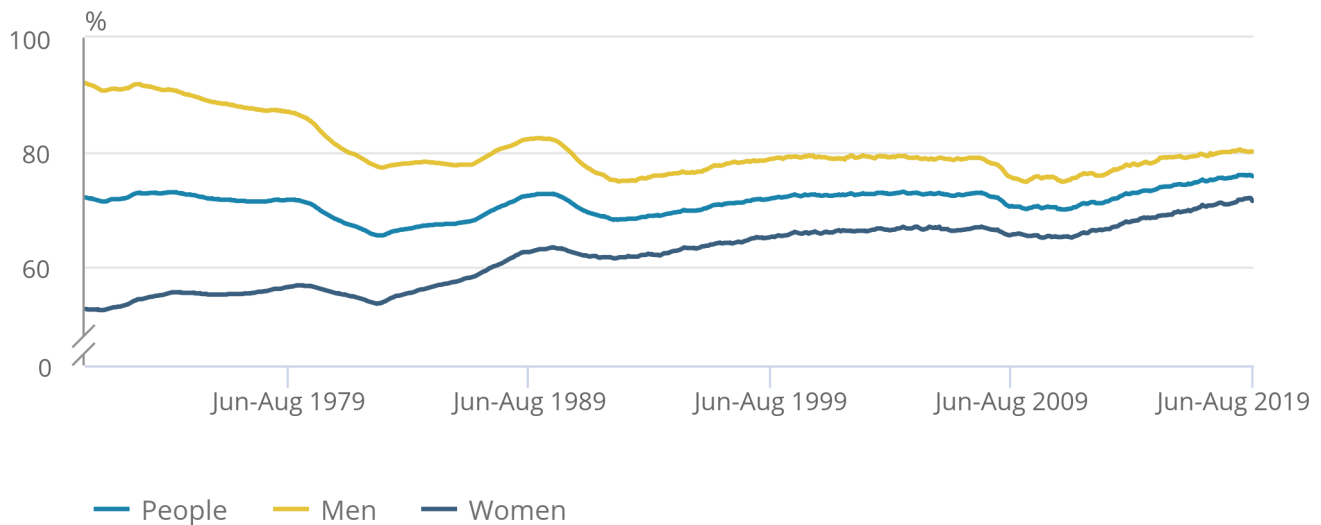
Employment

Figure 1: Employment rate for all people increased 0.3 percentage points on the year, to just below the record high employment rate

UK employment rates (aged 16 to 64 years), seasonally adjusted, January to March 1971 to June to August 2019

Figure 1: Employment rate for all people increased 0.3 percentage points on the year, to just below the record high employment rate

UK employment rates (aged 16 to 64 years), seasonally adjusted, January to March 1971 to June to August 2019



Source: Office for National Statistics – Labour Force Survey

[Employment](#) measures the number of people aged 16 years and over in paid work. The employment rate is the proportion of people aged between 16 and 64 years who are in paid work.

Estimated employment rates for men and women aged between 16 and 64 years have generally been increasing since early 2012 (as seen in Figure 1). For June to August 2019:

- the estimated employment rate for people was 75.9%; this is 0.3 percentage points up on the year, but 0.2 percentage points lower on the quarter
- the estimated employment rate for men was 80.2%; this is largely unchanged on the year and on the quarter
- the estimated employment rate for women was 71.6%; this is 0.6 percentage points up on the year, but 0.3 percentage points down on the quarter

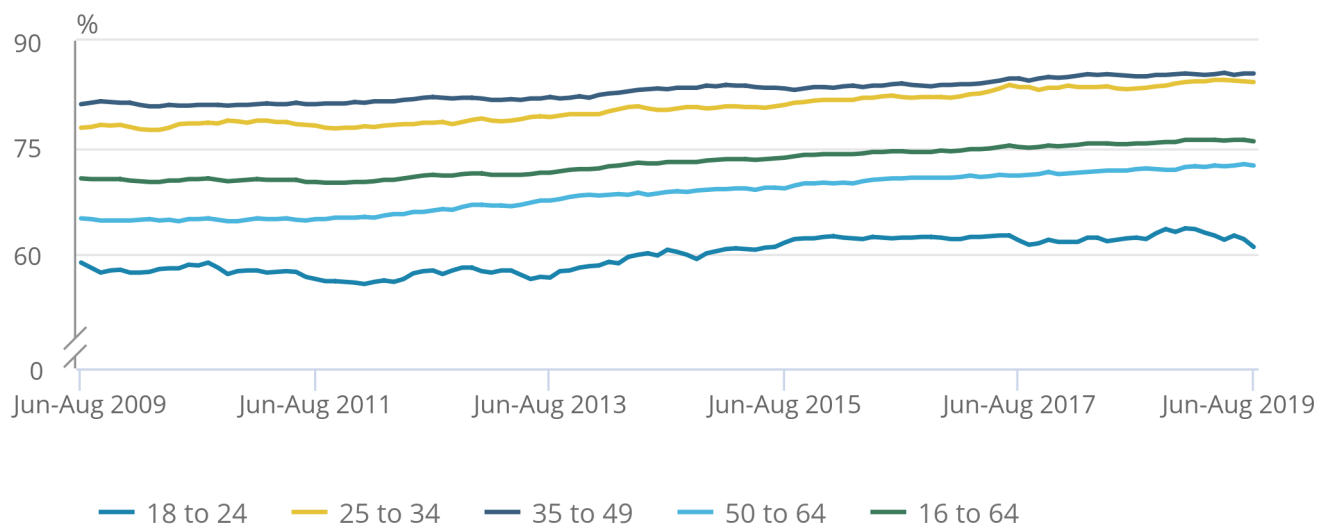
The increase in the employment rate for women in recent years is partly a result of changes to the State Pension age for women, resulting in fewer women retiring between the ages of 60 and 65 years.

Figure 2: Employment rates increased on the year for all age groups except the younger age groups (those aged below 25 years)

UK Employment rates by age, seasonally adjusted, June to August 2009 to June to August 2019

Figure 2: Employment rates increased on the year for all age groups except the younger age groups (those aged below 25 years)

UK Employment rates by age, seasonally adjusted, June to August 2009 to June to August 2019



Source: Office for National Statistics - Labour Force Survey

Looking at the estimates for employment rates by age group for June to August 2019 and comparing them with the estimates for June to August 2018, the only decrease was for those aged between 18 and 24 years (down 1.3 percentage points to 61.1%). Employment rates increased on the year for all other age groups shown in Figure 2 (the 16 to 17 years age group is excluded). However, the employment rate decreased on the quarter for almost all of them; the only exception being the 50 to 64 years age group, which increased 0.1 percentage points on the quarter.

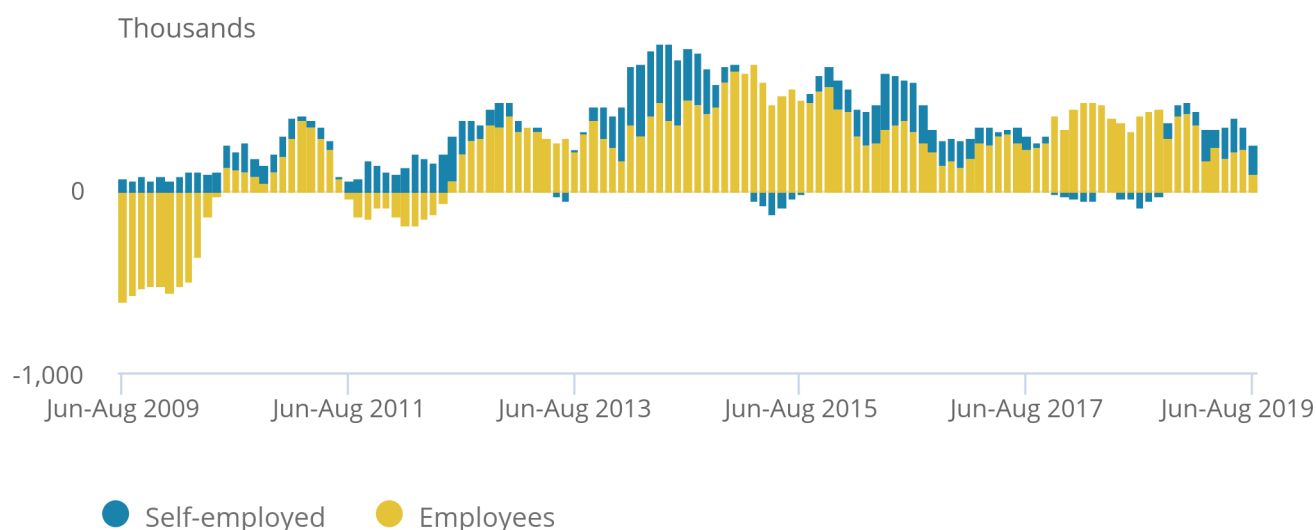
Estimates for June to August 2019 show 32.69 million people aged 16 years and over in employment, 282,000 more than a year earlier. This annual increase was mainly driven by women (up 202,000 on the year), those aged 50 years and over (up 287,000 on the year) and full-time workers (up 263,000 on the year). There was, however, a 56,000 decrease in employment on the quarter, which was the first quarterly decrease since August to October 2017.

Figure 3: Smallest annual increase in employees (up 97,000) since May to July 2012

Employees and self-employed people annual changes (aged 16 and over), UK, seasonally adjusted, June to August 2009 to June to August 2019

Figure 3: Smallest annual increase in employees (up 97,000) since May to July 2012

Employees and self-employed people annual changes (aged 16 and over), UK, seasonally adjusted, June to August 2009 to June to August 2019



Source: Office for National Statistics - Labour Force Survey

Looking at the estimates for June to August 2019 by type of employment:

- there were 27.58 million paid employees (84.4% of all people in employment), 97,000 more than a year earlier
- there were 4.93 million self-employed people (15.1% of all people in employment), 162,000 more than a year earlier

Since the latter half of 2012, the annual increases for employees have generally been greater than for the self-employed. However, the latest estimate shows the weakest annual increase for employees since May to July 2012 (see Figure 3), making it smaller than the annual increase for the self-employed.

These estimates for paid employees and self-employed people make up over 99% of all people in employment in the UK. The total employment figure also includes two other minor categories as explained in the [Guide to labour market statistics](#).

Since estimates began in 1971, [total hours worked](#) by women have generally increased, reflecting increases in both the employment rate for women and the UK population. In contrast, total hours worked by men have been relatively stable. This is because falls in the employment rate for men have been roughly offset by population increases.

Between June to August 2018 and June to August 2019 total actual weekly hours worked in the UK increased by 0.8% (to reach 1.05 billion hours), whereas average actual weekly hours worked decreased by 0.1% (to 32.1 hours). Therefore, the annual increase in total hours is driven by the 0.9% increase in employment over the last year.

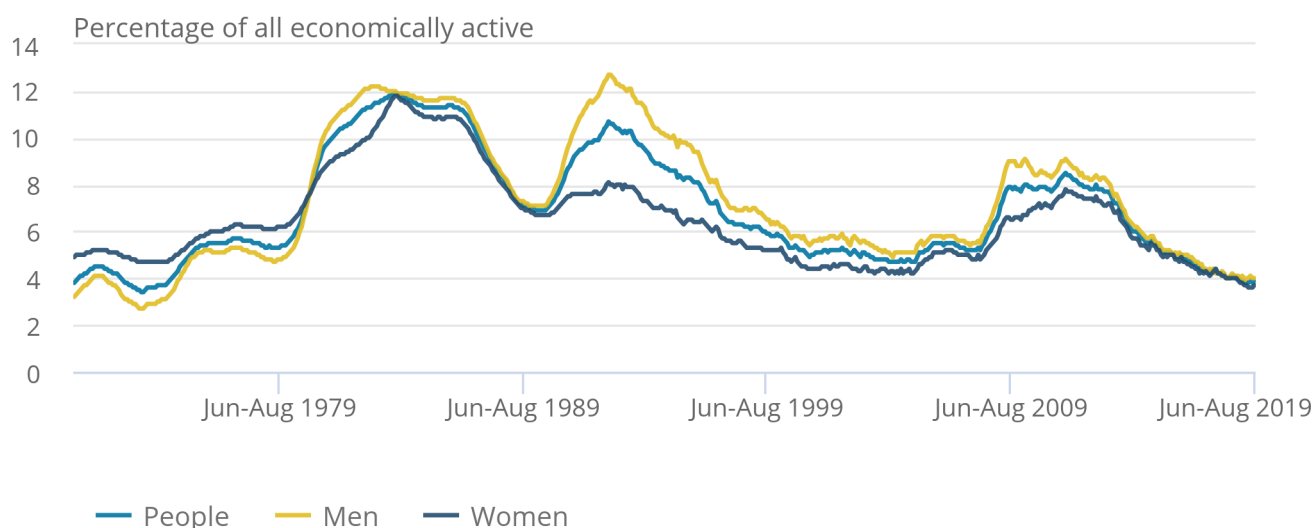
Unemployment

Figure 4: Unemployment rates have generally been falling for the last six years

UK unemployment rates (aged 16 years and over), seasonally adjusted, January to March 1971 to June to August 2019

Figure 4: Unemployment rates have generally been falling for the last six years

UK unemployment rates (aged 16 years and over), seasonally adjusted, January to March 1971 to June to August 2019



Source: Office for National Statistics - Labour Force Survey

[Unemployment](#) measures people without a job who have been actively seeking work within the last four weeks, and are available to start work within the next two weeks. The unemployment rate is not the proportion of the total population who are unemployed. It is the proportion of the economically active population (those in work plus those seeking and available to work) who are unemployed.

Estimated unemployment rates for both men and women aged 16 years and over have generally been falling since late 2013 but have levelled off in recent periods (as seen in Figure 4).

For June to August 2019:

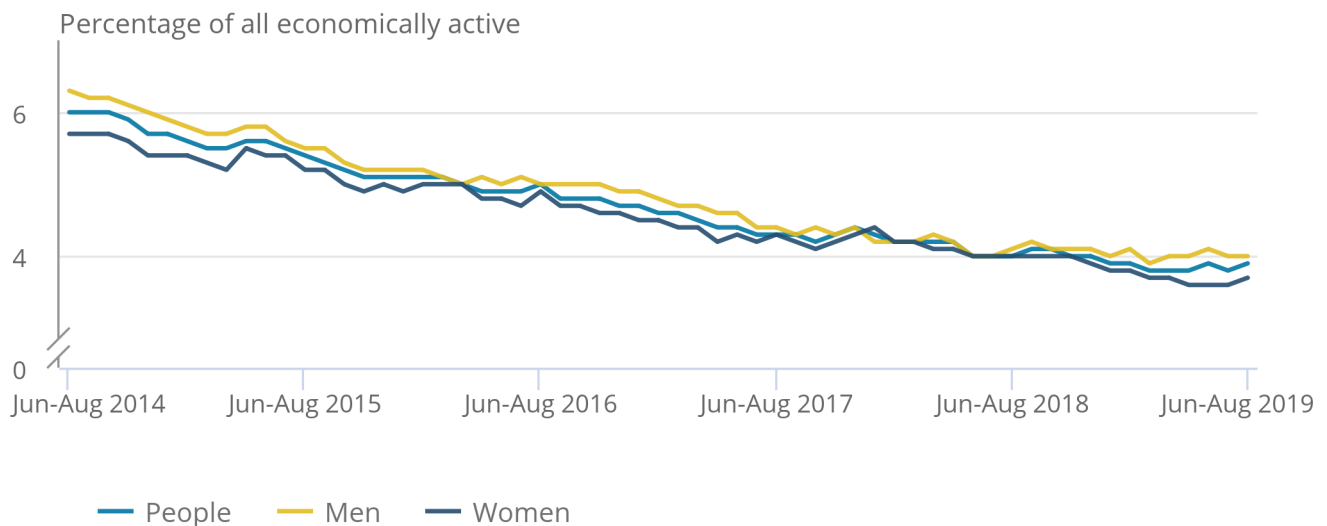
- the estimated UK unemployment rate for all people was 3.9%, lower than a year earlier (4.0%) but 0.1 percentage points higher than the previous quarter
- the estimated UK unemployment rate for men was 4.0%, 0.1 percentage points lower than last year but 0.1 percentage points higher than the previous quarter
- the estimated UK unemployment rate for women was 3.7%, down 0.3 percentage points on a year earlier but largely unchanged on the quarter

Figure 5: The steady fall in unemployment rates for men and women over the last few years has slowed in recent periods

UK unemployment rates (aged 16 years and over), seasonally adjusted, June to August 2014 to June to August 2019

Figure 5: The steady fall in unemployment rates for men and women over the last few years has slowed in recent periods

UK unemployment rates (aged 16 years and over), seasonally adjusted, June to August 2014 to June to August 2019



Source: Office for National Statistics - Labour Force Survey

Between June to August 2014 and June to August 2019:

- the estimated unemployment rate for all people fell from 6.0% to 3.9%
- the estimated unemployment rate for men fell from 6.3% to 4.0%
- the estimated unemployment rate for women fell from 5.7% to 3.7%

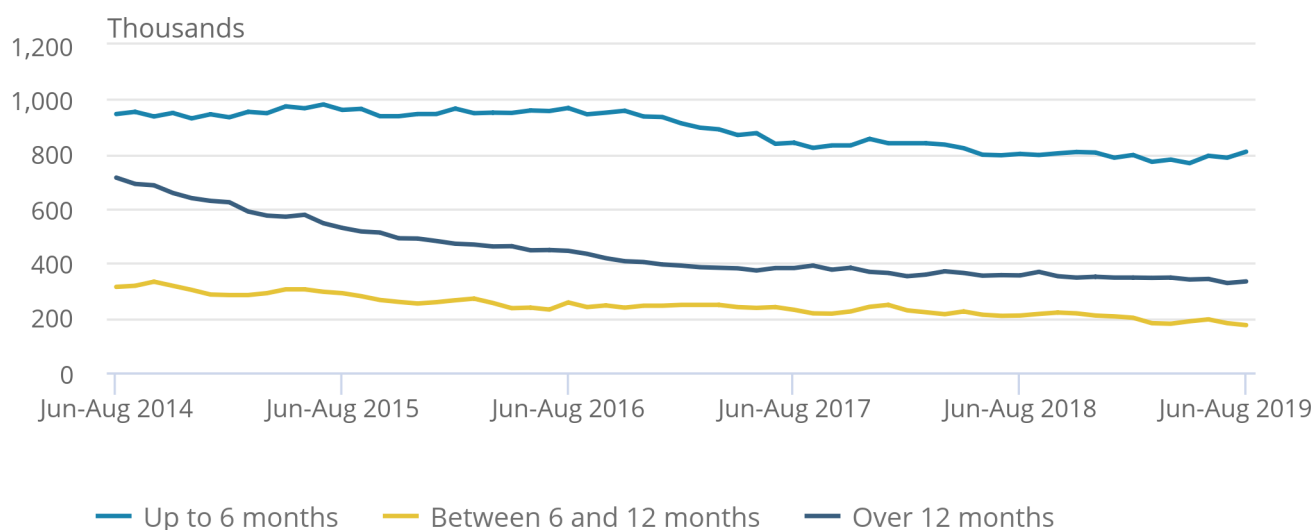
For June to August 2019, an estimated 1.31 million people were unemployed, 49,000 fewer than a year earlier and 658,000 fewer than five years earlier.

Figure 6: Long-term unemployment has more than halved over the last five years

Unemployment in the UK by duration (aged 16 years and over), seasonally adjusted, June to August 2014 to June to August 2019

Figure 6: Long-term unemployment has more than halved over the last five years

Unemployment in the UK by duration (aged 16 years and over), seasonally adjusted, June to August 2014 to June to August 2019



Source: Office for National Statistics - Labour Force Survey

Looking in more detail at this fall of 658,000 over the last five years:

- the largest fall was for long-term unemployment (those unemployed for over one year), which was down 380,000 to 333,000
- for those unemployed for over 6 and up to 12 months the number fell by 141,000 to a record low of 173,000
- the estimated number of people unemployed for up to six months fell by 137,000 to 808,000 over the last five years, although the number has increased slightly over the last year

Economic inactivity

[Economic inactivity](#) measures people without a job but who are not classed as unemployed because they have not been actively seeking work within the last four weeks and/or they are unable to start work within the next two weeks. Our headline measure of economic inactivity is for those aged between 16 and 64 years.

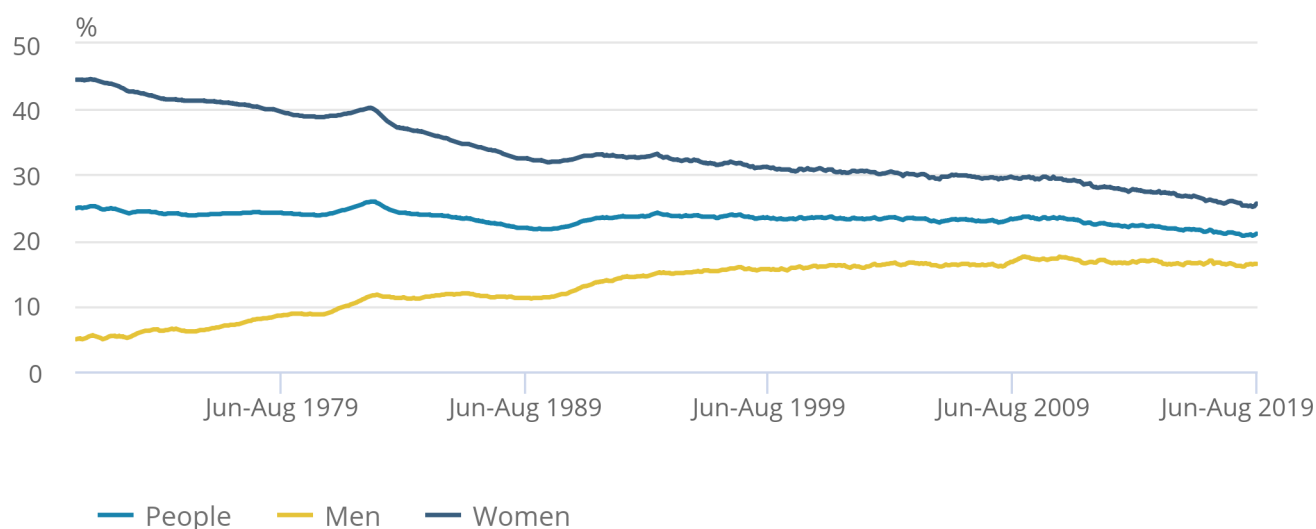
Since comparable records began in 1971, the economic inactivity rate for all people aged between 16 and 64 years has been generally falling (although it increased during recessions). This is because of a gradual fall in the economic inactivity rate for women.

Figure 7: Overall inactivity rate for people aged between 16 and 64 years was 21.0%, down 0.2 percentage points on the year

UK economic inactivity rate (all people aged 16 to 64 years), seasonally adjusted, January to March 1971 to June to August 2019

Figure 7: Overall inactivity rate for people aged between 16 and 64 years was 21.0%, down 0.2 percentage points on the year

UK economic inactivity rate (all people aged 16 to 64 years), seasonally adjusted, January to March 1971 to June to August 2019



Source: Office for National Statistics – Labour Force Survey

For people aged between 16 and 64 years, for June to August 2019:

- the estimated economic inactivity rate for all people was 21.0%, down 0.2 percentage points on the year but up 0.1 percentage points on the quarter
- the estimated economic inactivity rate for men was 16.4%; largely unchanged on the previous year and on the previous quarter
- the estimated economic inactivity rate for women was 25.6%, down 0.4 percentage points on the year but up 0.3 percentage points on the quarter

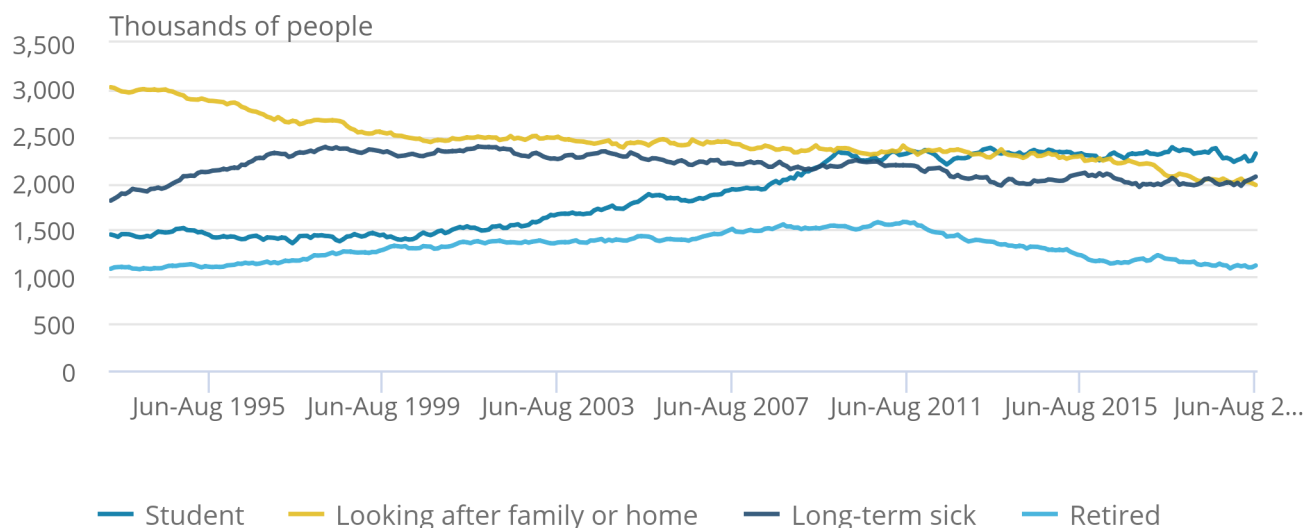
Estimates for June to August 2019 showed 8.68 million people aged between 16 and 64 years not in the labour force (economically inactive). This was 63,000 fewer than a year earlier and 362,000 fewer than five years earlier.

Figure 8: The number of people who are inactive mainly because they are looking after family or home is at a record low

Inactive people (aged 16 to 64 years) by main reason in the UK, seasonally adjusted, March to May 1993 to June to August 2019

Figure 8: The number of people who are inactive mainly because they are looking after family or home is at a record low

Inactive people (aged 16 to 64 years) by main reason in the UK, seasonally adjusted, March to May 1993 to June to August 2019



Source: Office for National Statistics - Labour Force Survey

Looking in more detail at the estimated fall of 362,000 in economic inactivity over the last five years, the categories showing the largest decreases were people looking after the family or home (down 309,000 to a record low) and those retiring from the labour force (down 198,000).

The fall was driven by women, with a decrease of 366,000. This reflects changes to the State Pension age, resulting in fewer women retiring between the ages of 60 and 65 years, as well as more women in younger age groups participating in the labour market.

4 . Employment data

The data in this bulletin follow internationally accepted definitions specified by the [International Labour Organization](#). This ensures that the estimates for the UK are comparable with those for other countries.

[Employment, unemployment and economic inactivity](#)

Dataset A05 SA | Released 15 October 2019

Estimates of UK employment, unemployment and economic inactivity broken down into age bands.

[Full-time, part-time and temporary workers](#)

Dataset EMP01 SA | Released 15 October 2019

Estimates of UK employment including a breakdown by sex, type of employment, and full-time and part-time working.

[Actual weekly hours worked](#)

Dataset HOUR01 SA | Released 15 October 2019

Estimates for the hours that people in employment work in the UK.

[Unemployment by age and duration](#)

Dataset UNEM01 SA | Released 15 October 2019

Estimates of unemployment in the UK including a breakdown by sex, age group and the length of time people are unemployed.

[Economic inactivity by reason](#)

Dataset INAC01 SA | Released 15 October 2019

Estimates of those not in the UK labour force measured by the reasons given for inactivity.

5 . Glossary

Actual and usual hours worked

Statistics for [usual hours worked](#) measure how many hours people usually work per week. Compared with [actual hours worked](#) they are not affected by absences and so can provide a better measure of normal working patterns. For example, a person who usually works 37 hours a week but who was on holiday for a week would be recorded as working zero actual hours for that week, while usual hours would be recorded as 37 hours.

Economic inactivity

People not in the labour force (also known as [economically inactive](#)) are not in employment but do not meet the internationally accepted definition of unemployment because they have not been seeking work within the last four weeks and/or they are unable to start work in the next two weeks. The economic inactivity rate is the proportion of people aged between 16 and 64 years who are not in the labour force.

Employment

[Employment](#) measures the number of people in paid work and differs from the number of jobs because some people have more than one job. The employment rate is the proportion of people aged between 16 and 64 years who are in paid work. A more detailed explanation is available in our [Guide to labour market statistics](#).

Unemployment

[Unemployment](#) measures people without a job who have been actively seeking work within the last four weeks and are available to start work within the next two weeks. The unemployment rate is not the proportion of the total population who are unemployed. It is the proportion of the economically active population (those in work plus those seeking and available to work) who are unemployed.

A [more detailed glossary](#) is available.

6 . Measuring the data

This bulletin relies on data collected from the [Labour Force Survey \(LFS\)](#), the largest household survey in the UK.

The [Quality and Methodology Information \(QMI\)](#) report pulls together important qualitative information on the various dimensions of data quality and provides a summary of the methods used to compile the output.

The [LFS performance and quality monitoring reports](#) provide data on response rates and other quality-related issues for the LFS.

7 . Strengths and limitations

The figures in this bulletin come from the Labour Force Survey (LFS), which gathers information from a sample of households across the UK rather than from the whole population. The sample is designed to be as accurate as possible given practical limitations such as time and cost constraints. Results from sample surveys are always estimates, not precise figures. This can have an impact on how changes in the estimates should be interpreted, especially for short-term comparisons.

As the number of people available in the sample gets smaller, the variability of the estimates that we can make from that sample size gets larger. Estimates for small groups (for example, unemployed people aged between 16 and 17 years), which are based on small subsets of the LFS sample, are less reliable and tend to be more volatile than for larger aggregated groups (for example, the total number of unemployed people).

In general, changes in the numbers (and especially the rates) reported in this bulletin between three-month periods are small and are not usually greater than the level that can be explained by sampling variability. Short-term movements in reported rates should be considered alongside longer-term patterns in the series and corresponding movements in other sources to give a fuller picture.

Further information is available in [A guide to labour market statistics](#).

Table 1: Summary of UK employment estimates for June to August 2019, seasonally adjusted

	Estimate (seasonally adjusted)	Sampling variability of estimate (1)	Change on quarter	Sampling variability of change on quarter (1)	Change on year	Sampling variability of change on year (1)
Employment (thousands of people aged 16 years and over)	32,693	± 179	-56	± 151	282	± 238
Employment rate (%, aged 16 to 64 years)	75.9%	± 0.4	-0.2	± 0.3	0.3	± 0.5
Unemployment (thousands of people aged 16 years and over)	1,314	± 71	22	± 74	-49	± 99
Unemployment rate (%, aged 16 years and over)	3.9%	± 0.2	0.1	± 0.2	-0.2	± 0.3
Economically inactive (thousands of people aged 16 to 64 years)	8,676	± 156	57	± 134	-63	± 208
Economic inactivity rate (%, aged 16 to 64 years)	21.0%	± 0.4	0.1	± 0.3	-0.2	± 0.5

Source: Office for National Statistics - Labour Force Survey

Notes

1. The sampling variability estimates are for 95% confidence intervals and are calculated on data that are not seasonally adjusted. [Back to table](#)

8 . You might also be interested in

The Office for Statistics Regulation (OSR) has a planned reassessment of labour market employment estimates, which aims to publish a set of recommendations in early 2020. As part of this assessment, the OSR may contact you to:

- gather feedback on your use of labour market estimates
- listen to your suggestions on ways we can build on our current engagement opportunities
- capture examples of where we have worked (or are working) together to improve communication and use of our statistics

The three sections of the recommendations report will cover trustworthiness, quality and value. The OSR will coordinate engagement with you but please feel free to contact David Freeman (david.freeman@ons.gov.uk) or Matt Hughes (matthew.hughes@ons.gov.uk) if you wish to discuss further.

[Labour market economic commentary](#)

Article | Released 15 October 2019

Additional economic analysis of the latest UK labour market headline statistics and long-term trends.

[Regional labour market statistics in the UK](#)

Bulletin | Released 15 October 2019

Regional, local authority and Parliamentary constituency breakdowns of changes in UK employment, unemployment, economic inactivity and other employment-related statistics.

[UK and non-UK people in the labour market](#)

Article | Released 13 August 2019

Estimates of labour market activity by nationality and country of birth.

[Public sector employment](#)

Bulletin | Released 10 September 2019

Quarterly estimates of the number of people employed in the public and private sectors in the UK. The public sector comprises central government, local government and public corporations.

[Young people not in education, employment or training](#)

Bulletin | Released 22 August 2019

Quarterly bulletin examining estimates of men and women aged between 16 and 24 years in the UK who are not studying or in employment.

[Working and workless households in the UK](#)

Bulletin | Released 28 August 2019

Commentary on quarterly estimates of the economic status of UK households and the people living in them.

[Employees in the UK](#)

Bulletin | Released 26 September 2019

The Business Register and Employment Survey (BRES) is the official source of employee and employment estimates by detailed geography and industry.

Index of Tables

The table below provides an index of the tables appearing in this Statistical Bulletin and it shows how these table numbers match up with the Excel spreadsheet datasets which are available on the website at:

<https://www.ons.gov.uk/employmentandlabourmarket/peopleinwork/employmentandemployeetypes/bulletins/uklabourmarket/october2019/relateddata>

The complete set of labour market tables is available from the Labour Market Overview bulletin.

Statistical Bulletin table number	Table description	Dataset
SUMMARY		
1	Labour Force Survey Summary	Dataset A02 SA
2 (*)	Labour market status by age group	Dataset A05 SA
EMPLOYMENT AND JOBS		
3	Full-time, part-time & temporary workers	Dataset EMP01 SA
4	Public and private sector employment	Dataset EMP02
4(1)	Public sector employment by industry	Dataset EMP03
5	Workforce jobs summary	Dataset JOBS01
6 (**)	Workforce jobs by industry	Dataset JOBS02
7	Actual weekly hours worked	Dataset HOUR01 SA
7(1)	Usual weekly hours worked	Dataset HOUR02 SA
NON-UK WORKERS		
8	Employment by country of birth and nationality	Dataset EMP06
8(1)	Unemployment and economic inactivity by country of birth and nationality	Dataset A12
UNEMPLOYMENT		
9	Unemployment by age and duration	Dataset UNEM01 SA
ECONOMIC ACTIVITY AND INACTIVITY		
10(*)	Economic activity by age	Dataset A05 SA
11	Economic inactivity by reason	Dataset INAC01 SA
12	Labour market and educational status of young people	Dataset A06 SA
EARNINGS		
13	Average Weekly Earnings (nominal) - Total pay	Dataset EARN01
14	Average Weekly Earnings (nominal) - Bonus pay	Dataset EARN01
15	Average Weekly Earnings (nominal) - Regular pay	Dataset EARN01
16	Average Weekly Earnings real and nominal (summary table)	Dataset EARN01
INTERNATIONAL SUMMARY		
17	International comparisons of employment and unemployment	Dataset A10
LABOUR DISPUTES		
18	Labour disputes	Dataset LABD01
VACANCIES		
19	Vacancies by size of business	Dataset VACS03
20	Vacancies and unemployment	Dataset VACS01
21	Vacancies by industry	Dataset VACS02
REDUNDANCIES		
22	Redundancies levels and rates	Dataset RED01 SA
REGIONAL SUMMARY		
23	Regional labour market summary	Dataset A07

(*) Tables 2 and 10 in the Statistical Bulletin pdf file have been amalgamated into one spreadsheet (Dataset A05 SA).

(**) Table JOBS02 provides more detail than Table 6 in the Statistical Bulletin pdf file.

The following symbols are used in the tables: p provisional, r revised, .. Not available, * suppressed due to small sample size.

The four-character identification codes appearing in the tables are the ONS references for the data series appearing in the Labour Market Statistics dataset which is available on the website at:

<https://www.ons.gov.uk/employmentandlabourmarket/peopleinwork/employmentandemployeetypes/datasets/labourmarketstatistics>

SUMMARY

1 Summary of headline LFS¹ indicators

United Kingdom (thousands) seasonally adjusted

		LFS household population ¹		Headline indicators					
		Employment				Unemployment		Inactivity	
		Level	Rate ²	Level	Rate ³	Level	Rate ⁴	Level	Rate ⁴
		All aged 16 & over	All aged 16 to 64	All aged 16 & over	All aged 16 to 64	All aged 16 & over	All aged 16 to 64	All aged 16 to 64	All aged 16 to 64
		MGSL	LF2O	MGRZ	LF24	MGSC	MG SX	LF2M	LF2S
People									
	Jun-Aug 2017	52,763	41,165	32,104	75.1	1,452	4.3	8,806	21.4
	Jun-Aug 2018	53,047	41,258	32,410	75.6	1,363	4.0	8,740	21.2
	Sep-Nov 2018	53,116	41,277	32,542	75.8	1,370	4.0	8,650	21.0
	Dec-Feb 2019	53,184	41,297	32,721	76.1	1,343	3.9	8,536	20.7
	Mar-May 2019	53,252	41,317	32,749	76.0	1,292	3.8	8,619	20.9
	Jun-Aug 2019	53,321	41,339	32,693	75.9	1,314	3.9	8,676	21.0
	Change on quarter	69	22	-56	-0.2	22	0.1	57	0.1
	Change %	0.1	0.1	-0.2		1.7		0.7	
	Change on year	274	81	282	0.3	-49	-0.2	-63	-0.2
	Change %	0.5	0.2	0.9		-3.6		-0.7	
Men		MGSM	YBTG	MGSA	MG SV	MGSD	MG SY	YBSO	YBTM
	Jun-Aug 2017	25,791	20,455	17,002	79.6	780	4.4	3,404	16.6
	Jun-Aug 2018	25,956	20,517	17,176	80.1	733	4.1	3,356	16.4
	Sep-Nov 2018	25,994	20,530	17,274	80.3	739	4.1	3,314	16.1
	Dec-Feb 2019	26,031	20,542	17,311	80.5	731	4.1	3,290	16.0
	Mar-May 2019	26,068	20,554	17,280	80.2	712	4.0	3,368	16.4
	Jun-Aug 2019	26,107	20,567	17,256	80.2	727	4.0	3,366	16.4
	Change on quarter	38	13	-24	0.0	15	0.1	-3	0.0
	Change %	0.1	0.1	-0.1		2.1		-0.1	
	Change on year	151	49	80	0.0	-6	-0.1	10	0.0
	Change %	0.6	0.2	0.5		-0.8		0.3	
Women		MG SN	LF2P	MG SB	LF25	MG SE	MG SZ	LF2N	LF2T
	Jun-Aug 2017	26,971	20,710	15,102	70.7	672	4.3	5,402	26.1
	Jun-Aug 2018	27,091	20,740	15,235	71.0	629	4.0	5,384	26.0
	Sep-Nov 2018	27,122	20,748	15,268	71.3	631	4.0	5,336	25.7
	Dec-Feb 2019	27,153	20,756	15,409	71.8	611	3.8	5,246	25.3
	Mar-May 2019	27,184	20,763	15,469	72.0	580	3.6	5,251	25.3
	Jun-Aug 2019	27,215	20,772	15,437	71.6	586	3.7	5,310	25.6
	Change on quarter	31	9	-32	-0.3	6	0.0	59	0.3
	Change %	0.1	0.0	-0.2		1.1		1.1	
	Change on year	123	32	202	0.6	-43	-0.3	-74	-0.4
	Change %	0.5	0.2	1.3		-6.8		-1.4	

Source: Labour Force Survey

Labour market statistics enquiries: labour.market@ons.gov.uk

1. The Labour Force Survey (LFS) is a survey of households in the UK.

2. The headline employment rate is the number of people aged 16 to 64 in employment divided by the population aged 16 to 64.

3. The headline unemployment rate is the number of unemployed people (aged 16+) divided by the economically active population (aged 16+). The economically active population is defined as those in employment plus those who are unemployed.

4. The headline inactivity rate is the number of people aged 16 to 64 divided by the population aged 16-64.

Note on headline employment, unemployment and inactivity rates

The headline employment and inactivity rates are based on the population aged 16 to 64 but the headline unemployment rate is based on the economically active population aged 16 and over. The employment and inactivity rates for those aged 16 and over are affected by the inclusion of the retired population in the denominators and are therefore less meaningful than the rates for those aged from 16 to 64. However, for the unemployment rate for those aged 16 and over, no such effect occurs as the denominator for the unemployment rate is the economically active population which only includes people in work or actively seeking and able to work.

Note on headline employment, unemployment and inactivity levels

The headline employment and unemployment levels are for those aged 16 and over; they measure all people in work or actively seeking and able to work. However, the headline inactivity level is for those aged 16 to 64. The inactivity rate for those aged 16 and over is less meaningful as it includes elderly people who have retired from the labour force.

SUMMARY

2(1) Labour market status by age group

United Kingdom (thousands) seasonally adjusted

		Aged 16 and over						Aged 16-64					
		Employment		Unemployment		Inactivity		Employment		Unemployment		Inactivity	
		Level	Rate	Level	Rate	Level	Rate	Level	Rate	Level	Rate	Level	Rate
		MGRZ	MGSR	MGSC	MGSX	MGSI	YBTC	LF2G	LF24	LF2I	LF2Q	LF2M	LF2S
People	Jun-Aug 2017	32,104	60.8	1,452	4.3	19,206	36.4	30,931	75.1	1,428	4.4	8,806	21.4
	Jun-Aug 2018	32,410	61.1	1,363	4.0	19,274	36.3	31,173	75.6	1,345	4.1	8,740	21.2
	Sep-Nov 2018	32,542	61.3	1,370	4.0	19,203	36.2	31,272	75.8	1,355	4.2	8,650	21.0
	Dec-Feb 2019	32,721	61.5	1,343	3.9	19,120	36.0	31,438	76.1	1,323	4.0	8,536	20.7
	Mar-May 2019	32,749	61.5	1,292	3.8	19,211	36.1	31,421	76.0	1,276	3.9	8,619	20.9
	Jun-Aug 2019	32,693	61.3	1,314	3.9	19,315	36.2	31,365	75.9	1,297	4.0	8,676	21.0
	Change on quarter	-56	-0.2	22	0.1	104	0.1	-56	-0.2	21	0.1	57	0.1
	Change %	-0.2		1.7		0.5		-0.2		1.6		0.7	
	Change on year	282	0.2	-49	-0.2	41	-0.1	192	0.3	-48	-0.2	-63	-0.2
	Change %	0.9		-3.6		0.2		0.6		-3.6		-0.7	
Men		MGSA	MGSS	MGSD	MGSY	MGSJ	YBTD	YBSF	MGSV	YBSI	YBTJ	YBSO	YBTM
	Jun-Aug 2017	17,002	65.9	780	4.4	8,009	31.1	16,287	79.6	764	4.5	3,404	16.6
	Jun-Aug 2018	17,176	66.2	733	4.1	8,047	31.0	16,441	80.1	721	4.2	3,356	16.4
	Sep-Nov 2018	17,274	66.5	739	4.1	7,980	30.7	16,486	80.3	730	4.2	3,314	16.1
	Dec-Feb 2019	17,311	66.5	731	4.1	7,988	30.7	16,532	80.5	719	4.2	3,290	16.0
	Mar-May 2019	17,280	66.3	712	4.0	8,076	31.0	16,482	80.2	704	4.1	3,368	16.4
	Jun-Aug 2019	17,256	66.1	727	4.0	8,123	31.1	16,485	80.2	716	4.2	3,366	16.4
	Change on quarter	-24	-0.2	15	0.1	47	0.1	3	0.0	13	0.1	-3	0.0
	Change %	-0.1		2.1		0.6		0.0		1.8		-0.1	
	Change on year	80	-0.1	-6	-0.1	76	0.1	44	0.0	-5	0.0	10	0.0
	Change %	0.5		-0.8		0.9		0.3		-0.7		0.3	
Women		MGST	MGST	MGSE	MGSZ	MGSK	YBTE	LF2H	LF25	LF2J	LF2R	LF2N	LF2T
	Jun-Aug 2017	15,102	56.0	672	4.3	11,198	41.5	14,644	70.7	664	4.3	5,402	26.1
	Jun-Aug 2018	15,235	56.2	629	4.0	11,228	41.4	14,732	71.0	624	4.1	5,384	26.0
	Sep-Nov 2018	15,268	56.3	631	4.0	11,223	41.4	14,786	71.3	626	4.1	5,336	25.7
	Dec-Feb 2019	15,409	56.8	611	3.8	11,132	41.0	14,906	71.8	603	3.9	5,246	25.3
	Mar-May 2019	15,469	56.9	580	3.6	11,135	41.0	14,940	72.0	573	3.7	5,251	25.3
	Jun-Aug 2019	15,437	56.7	586	3.7	11,192	41.1	14,881	71.6	581	3.8	5,310	25.6
	Change on quarter	-32	-0.2	6	0.0	57	0.2	-59	-0.3	8	0.1	59	0.3
	Change %	-0.2		1.1		0.5		-0.4		1.5		1.1	
	Change on year	202	0.5	-43	-0.3	-35	-0.3	148	0.6	-43	-0.3	-74	-0.4
	Change %	1.3		-6.8		-0.3		1.0		-6.9		-1.4	
		Aged 16-17						Aged 18-24					
		Employment		Unemployment		Inactivity		Employment		Unemployment		Inactivity	
		Level	Rate	Level	Rate	Level	Rate	Level	Rate	Level	Rate	Level	Rate
		YBTO	YBUA	YBVH	YBVK	YCAS	LWEX	YBTR	YBUD	YBVN	YBVQ	YCAV	LWFA
People	Jun-Aug 2017	344	24.2	106	23.5	974	68.4	3,504	62.0	427	10.9	1,723	30.5
	Jun-Aug 2018	337	24.2	94	21.9	961	69.0	3,490	62.4	373	9.6	1,730	30.9
	Sep-Nov 2018	313	22.5	103	24.8	977	70.1	3,541	63.6	408	10.3	1,622	29.1
	Dec-Feb 2019	332	23.8	88	21.0	972	69.8	3,528	63.6	404	10.3	1,618	29.1
	Mar-May 2019	341	24.5	83	19.6	967	69.5	3,432	62.1	410	10.7	1,687	30.5
	Jun-Aug 2019	338	24.2	86	20.3	971	69.7	3,366	61.1	408	10.8	1,734	31.5
	Change on quarter	-4	-0.3	3	0.7	4	0.2	-66	-1.0	-1	0.2	47	1.0
	Change %	-1.2		3.2		0.4		-1.9		-0.4		2.8	
	Change on year	0	0.0	-9	-1.6	10	0.7	-124	-1.3	36	1.2	4	0.5
	Change %	0.0		-9.3		1.0		-3.5		9.6		0.2	
Men		YBTP	YBUB	YBVI	YBVL	YCAT	LWEY	YBTS	YBUE	YBVO	YBVR	YCAW	LWFB
	Jun-Aug 2017	164	22.6	57	25.8	508	69.6	1,798	62.3	247	12.1	839	29.1
	Jun-Aug 2018	168	23.6	49	22.4	496	69.6	1,825	63.9	211	10.4	821	28.7
	Sep-Nov 2018	148	20.8	53	26.4	512	71.8	1,853	65.1	236	11.3	756	26.6
	Dec-Feb 2019	161	22.6	50	23.8	502	70.3	1,813	64.0	248	12.0	773	27.3
	Mar-May 2019	156	21.8	47	23.0	511	71.6	1,750	62.0	249	12.5	824	29.2
	Jun-Aug 2019	156	21.9	50	24.2	508	71.1	1,736	61.7	246	12.4	831	29.5
	Change on quarter	1	0.0	3	1.2	-3	-0.5	-14	-0.3	-3	-0.1	7	0.4
	Change %	0.4		7.4		-0.5		-0.8		-1.4		0.9	
	Change on year	-12	-1.7	2	1.9	12	1.5	-89	-2.2	35	2.1	10	0.8
	Change %	-7.1		3.1		2.4		-4.9		16.7		1.2	
Women		YBTQ	YBUC	YBVJ	YBVM	YCAU	LWEZ	YBTT	YBUF	YBVP	YBVS	YCAX	LWFC
	Jun-Aug 2017	180	25.9	49	21.3	466	67.1	1,706	61.6	181	9.6	883	31.9
	Jun-Aug 2018	169	24.9	46	21.4	465	68.4	1,665	60.9	162	8.8	909	33.2
	Sep-Nov 2018	165	24.3	50	23.4	465	68.3	1,688	61.9	172	9.2	866	31.8
	Dec-Feb 2019	171	25.1	38	18.1	471	69.3	1,715	63.2	156	8.3	844	31.1
	Mar-May 2019	186	27.4	36	16.4	457	67.3	1,682	62.2	160	8.7	863	31.9
	Jun-Aug 2019	181	26.6	36	16.5	463	68.1	1,630	60.5	162	9.1	903	33.5
	Change on quarter	-5	-0.7	-1	0.1	7	0.9	-52	-1.7	2	0.3	40	1.6
	Change %	-2.5		-2.1		1.5		-3.1		1.2		4.6	
	Change on year	12	1.8	-10	-4.9	-2	-0.3	-35	-0.4	1	0.2	-6	0.3
	Change %	7.1		-22.4		-0.4		-2.1		0.4		-0.7	

SUMMARY

2(2) Labour market status by age group

United Kingdom (thousands) seasonally adjusted

People	Aged 25-34						Aged 35-49					
	Employment		Unemployment		Inactivity		Employment		Unemployment		Inactivity	
	Level	Rate	Level	Rate	Level	Rate	Level	Rate	Level	Rate	Level	Rate
	YBTU	YBUG	YCGM	YCGP	YCAI	LWFD	YBTX	YBUJ	YCGS	YCGV	YCBG	LWFG
Jun-Aug 2017	7,416	83.5	296	3.8	1,168	13.2	10,859	84.7	320	2.9	1,645	12.8
Jun-Aug 2018	7,435	83.3	296	3.8	1,198	13.4	10,861	85.0	298	2.7	1,613	12.6
Sep-Nov 2018	7,478	83.7	269	3.5	1,192	13.3	10,871	85.2	306	2.7	1,583	12.4
Dec-Feb 2019	7,543	84.3	269	3.4	1,136	12.7	10,876	85.3	292	2.6	1,579	12.4
Mar-May 2019	7,570	84.5	248	3.2	1,139	12.7	10,882	85.5	276	2.5	1,577	12.4
Jun-Aug 2019	7,550	84.2	272	3.5	1,140	12.7	10,866	85.4	276	2.5	1,584	12.4
Change on quarter	-21	-0.3	24	0.3	1	0.0	-16	-0.1	0	0.0	6	0.1
Change %	-0.3		9.8		0.1		-0.1		0.1		0.4	
Change on year	114	1.0	-24	-0.3	-58	-0.7	5	0.4	-22	-0.2	-30	-0.2
Change %	1.5		-8.0		-4.9		0.0		-7.5		-1.8	
Men	YBTV	YBUH	YCGN	YCGQ	YCAZ	LWFE	YBTY	YBUK	YCGT	YCGW	YCBG	LWFH
Jun-Aug 2017	3,983	89.9	152	3.7	298	6.7	5,742	90.7	144	2.4	443	7.0
Jun-Aug 2018	3,996	89.3	155	3.7	324	7.2	5,721	90.7	157	2.7	426	6.8
Sep-Nov 2018	4,028	89.9	148	3.5	307	6.8	5,727	90.9	146	2.5	426	6.8
Dec-Feb 2019	4,050	90.2	141	3.4	299	6.7	5,738	91.2	131	2.2	425	6.7
Mar-May 2019	4,061	90.3	139	3.3	298	6.6	5,743	91.3	127	2.2	417	6.6
Jun-Aug 2019	4,050	90.0	144	3.4	308	6.8	5,750	91.5	128	2.2	407	6.5
Change on quarter	-10	-0.3	6	0.1	10	0.2	7	0.2	1	0.0	-11	-0.2
Change %	-0.3		4.0		3.4		0.1		0.4		-2.6	
Change on year	54	0.7	-11	-0.3	-16	-0.4	29	0.8	-30	-0.5	-20	-0.3
Change %	1.4		-6.9		-4.9		0.5		-18.9		-4.7	
Women	YBTW	YBUI	YCGO	YCGR	YCBA	LWFF	YBTZ	YBUL	YCGU	YCGX	YCBD	LWFI
Jun-Aug 2017	3,433	77.2	144	4.0	871	19.6	5,117	78.8	176	3.3	1,202	18.5
Jun-Aug 2018	3,439	77.2	141	3.9	875	19.6	5,140	79.5	141	2.7	1,187	18.3
Sep-Nov 2018	3,451	77.4	121	3.4	885	19.9	5,144	79.6	160	3.0	1,158	17.9
Dec-Feb 2019	3,493	78.3	128	3.5	837	18.8	5,138	79.6	161	3.0	1,155	17.9
Mar-May 2019	3,510	78.7	109	3.0	841	18.9	5,139	79.7	149	2.8	1,160	18.0
Jun-Aug 2019	3,499	78.5	128	3.5	832	18.7	5,116	79.4	148	2.8	1,177	18.3
Change on quarter	-10	-0.2	19	0.5	-9	-0.2	-22	-0.3	0	0.0	17	0.3
Change %	-0.3		17.2		-1.0		-0.4		-0.1		1.5	
Change on year	60	1.3	-13	-0.4	-42	-1.0	-24	0.0	7	0.1	-10	-0.1
Change %	1.7		-9.3		-4.9		-0.5		5.1		-0.8	
People	Age 50-64						Age 65+					
	Employment		Unemployment		Inactivity		Employment		Unemployment		Inactivity	
	Level	Rate	Level	Rate	Level	Rate	Level	Rate	Level	Rate	Level	Rate
	LF26	LF2U	LF28	LF2E	LF2A	LF2W	LFK4	LFK6	K5HU	K5HW	LFL4	LFL6
Jun-Aug 2017	8,807	71.1	279	3.1	3,297	26.6	1,173	10.1	24	2.0	10,400	89.7
Jun-Aug 2018	9,049	72.0	283	3.0	3,236	25.7	1,237	10.5	18	1.4	10,535	89.4
Sep-Nov 2018	9,069	71.9	269	2.9	3,276	26.0	1,270	10.7	15	1.1	10,553	89.1
Dec-Feb 2019	9,159	72.4	269	2.9	3,231	25.5	1,282	10.8	20	1.5	10,584	89.0
Mar-May 2019	9,196	72.4	260	2.7	3,249	25.6	1,328	11.1	16	1.2	10,592	88.7
Jun-Aug 2019	9,246	72.5	255	2.7	3,247	25.5	1,327	11.1	16	1.2	10,639	88.8
Change on quarter	50	0.1	-5	-0.1	-2	-0.1	0	0.0	1	0.0	47	0.0
Change %	0.5		-1.9		-0.1		0.0		3.8		0.4	
Change on year	197	0.5	-29	-0.4	10	-0.3	90	0.6	-1	-0.2	104	-0.6
Change %	2.2		-10.1		0.3		7.3		-6.6		1.0	
Men	MGUX	YBUN	MGVM	MGXF	MGWB	LWFK	MGVA	YBUQ	MGVP	MGXI	MGWE	LWFN
Jun-Aug 2017	4,600	75.7	164	3.4	1,317	21.7	715	13.4	16	2.3	4,604	86.3
Jun-Aug 2018	4,731	76.7	149	3.1	1,288	20.9	735	13.5	12	1.6	4,691	86.3
Sep-Nov 2018	4,731	76.4	146	3.0	1,313	21.2	788	14.4	9	1.2	4,666	85.4
Dec-Feb 2019	4,770	76.8	149	3.0	1,292	20.8	779	14.2	12	1.5	4,698	85.6
Mar-May 2019	4,772	76.6	142	2.9	1,319	21.2	799	14.5	9	1.1	4,707	85.4
Jun-Aug 2019	4,792	76.6	148	3.0	1,312	21.0	771	13.9	11	1.4	4,757	85.9
Change on quarter	20	0.1	7	0.1	-6	-0.2	-27	-0.6	3	0.4	50	0.5
Change %	0.4		4.6		-0.5		-3.4		30.1		1.1	
Change on year	61	-0.1	-1	-0.1	24	0.1	36	0.4	-1	-0.2	66	-0.4
Change %	1.3		-0.7		1.9		4.9		-10.3		1.4	
Women	LF27	LF2V	LF29	LF2F	LF2B	LF2X	LFK5	LFK7	K5HV	K5HX	LFL5	LFL7
Jun-Aug 2017	4,207	66.7	115	2.7	1,981	31.4	458	7.3	8	1.7	5,796	92.6
Jun-Aug 2018	4,319	67.5	134	3.0	1,948	30.4	502	7.9	5	1.0	5,844	92.0
Sep-Nov 2018	4,339	67.5	123	2.8	1,963	30.6	482	7.6	5	1.1	5,887	92.3
Dec-Feb 2019	4,390	68.1	120	2.7	1,939	30.1	503	7.9	8	1.6	5,886	92.0
Mar-May 2019	4,424	68.4	118	2.6	1,930	29.8	529	8.2	7	1.4	5,884	91.6
Jun-Aug 2019	4,454	68.6	106	2.3	1,935	29.8	556	8.6	5	1.0	5,882	91.3
Change on quarter	30	0.2	-11	-0.3	4	0.0	27	0.4	-2	-0.4	-3	-0.4
Change %	0.7		-9.7		0.2		5.1		-26.7		0.0	
Change on year	135	1.1	-27	-0.7	-14	-0.7	54	0.7	0	-0.1	38	-0.7
Change %	3.1		-20.5		-0.7		10.7		1.9		0.7	

Source: Labour Force Survey

Labour market statistics enquiries: labour.market@ons.gov.uk

EMPLOYMENT AND JOBS

3 Full-time, part-time and temporary workers

United Kingdom (thousands of people aged 16 and over) seasonally adjusted

		All in employment					Full-time and part-time workers ¹							Total Workers with second jobs
		Total	Employees	Self employed	Unpaid family workers	Government supported training & employment programmes ²	Total people working full-time	total people working part-time	Employees working full time	Employees working part time	Self- employed people working full-time	Self- employed people working part-time		
1	2	3	4	5	6	7	8	9	10	11	12			
People	MGRZ	MGRN	MGRQ	MGRT	MGRW	YCBE	YCBH	YCBK	YCBN	YCBQ	YCBT	YCBW		
	Jun-Aug 2017	32,104	27,066	4,853	109	75	23,543	8,561	20,064	7,002	3,405	1,448	1,110	
	Jun-Aug 2018	32,410	27,479	4,768	118	45	23,898	8,513	20,531	6,949	3,326	1,442	1,123	
	Sep-Nov 2018	32,542	27,532	4,856	106	49	24,008	8,534	20,579	6,953	3,390	1,465	1,117	
	Dec-Feb 2019	32,721	27,711	4,833	134	43	24,146	8,575	20,684	7,027	3,414	1,418	1,129	
	Mar-May 2019	32,749	27,626	4,955	127	40	24,088	8,661	20,606	7,020	3,433	1,522	1,153	
	Jun-Aug 2019	32,693	27,577	4,930	129	57	24,160	8,533	20,611	6,965	3,497	1,433	1,147	
	Change on quarter	-56	-49	-25	2	17	73	-129	5	-54	64	-89	-6	
	Change %	-0.2	-0.2	-0.5	1.2	41.4	0.3	-1.5	0.0	-0.8	1.9	-5.9	-0.5	
	Change on year	282	97	162	10	12	263	20	81	17	171	-9	24	
	Change %	0.9	0.4	3.4	8.8	27.4	1.1	0.2	0.4	0.2	5.1	-0.6	2.1	
Men	MGSA	MGRO	MGRR	MGRU	MGRX	YCBF	YCBI	YCBL	YCBO	YCBR	YCBU	YCBX		
	Jun-Aug 2017	17,002	13,681	3,236	48	37	14,757	2,245	12,073	1,608	2,645	591	478	
	Jun-Aug 2018	17,176	13,916	3,176	57	27	14,904	2,272	12,286	1,629	2,596	580	468	
	Sep-Nov 2018	17,274	13,963	3,230	49	32	14,990	2,284	12,327	1,636	2,641	590	475	
	Dec-Feb 2019	17,311	13,969	3,258	61	24	15,052	2,259	12,353	1,616	2,673	584	472	
	Mar-May 2019	17,280	13,897	3,294	66	23	14,961	2,319	12,279	1,618	2,656	638	482	
	Jun-Aug 2019	17,256	13,867	3,297	58	34	15,023	2,233	12,281	1,585	2,711	585	485	
	Change on quarter	-24	-30	3	-8	11	61	-86	3	-33	55	-53	3	
	Change %	-0.1	-0.2	0.1	-12.2	48.1	0.4	-3.7	0.0	-2.0	2.1	-8.3	0.6	
	Change on year	80	-49	121	1	8	119	-38	-5	-44	115	6	16	
	Change %	0.5	-0.4	3.8	2.0	28.6	0.8	-1.7	0.0	-2.7	4.4	1.0	3.5	
Women	MGSB	MGRP	MGRS	MGRV	MGRY	YCBG	YCBJ	YCBM	YCBP	YCBS	YCBV	YCBY		
	Jun-Aug 2017	15,102	13,385	1,617	61	38	8,786	6,316	7,992	5,393	760	857	632	
	Jun-Aug 2018	15,235	13,564	1,592	61	18	8,993	6,241	8,244	5,319	730	862	655	
	Sep-Nov 2018	15,268	13,569	1,625	57	16	9,018	6,250	8,252	5,317	750	876	641	
	Dec-Feb 2019	15,409	13,742	1,575	73	20	9,093	6,316	8,331	5,411	741	834	657	
	Mar-May 2019	15,469	13,729	1,661	61	17	9,126	6,342	8,328	5,402	777	884	671	
	Jun-Aug 2019	15,437	13,710	1,633	70	23	9,138	6,299	8,330	5,380	786	848	662	
	Change on quarter	-32	-20	-28	10	6	11	-43	2	-22	9	-36	-9	
	Change %	-0.2	-0.1	-1.7	15.8	32.4	0.1	-0.7	0.0	-0.4	1.1	-4.1	-1.3	
	Change on year	202	146	42	9	5	144	58	86	61	56	-14	8	
	Change %	1.3	1.1	2.6	15.2	25.5	1.6	0.9	1.0	1.1	7.7	-1.7	1.2	
Temporary employees (reasons for temporary working)														
Part-time workers (reasons for working part-time) ³														
People	Total	Total as % of all employees	Could not find permanent job	% that could not find permanent job	Did not want permanent job	Had a contract with period of training	Some other reason	Total ⁴	Could not find full- time job	% that could not find full- time job	Did not want full- time job	Ill or disabled	Student or at school	
	13	14	15	16	17	18	19	20	21	22	23	24	25	
	YCBZ	YCCC	YCCF	YCCI	YCCL	YCCO	YCCR	YCCU	YCCX	YCDA	YCDD	YCDG	YCDJ	YCDJ
	Jun-Aug 2017	1,594	5.9	443	27.8	431	127	594	8,450	1,037	12.3	5,968	272	1,096
	Jun-Aug 2018	1,522	5.5	407	26.7	443	124	548	8,390	937	11.2	6,004	272	1,113
	Sep-Nov 2018	1,532	5.6	408	26.7	448	119	557	8,418	883	10.5	6,090	270	1,109
	Dec-Feb 2019	1,545	5.6	408	26.4	453	136	548	8,446	950	11.2	6,094	262	1,069
	Mar-May 2019	1,467	5.3	366	24.9	462	130	510	8,542	931	10.9	6,188	280	1,077
	Jun-Aug 2019	1,398	5.1	335	24.0	366	135	562	8,399	869	10.3	6,108	276	1,085
	Change on quarter	-69	-0.2	-31	-1.0	-96	5	53	-143	-62	-0.5	-81	-4	8
	Change %	-4.7		-8.4		-20.7	3.9	10.3	-1.7	-6.6		-1.3	-1.3	0.8
	Change on year	-124	-0.5	-72	-2.8	-77	11	14	8	-68	-0.8	103	5	-27
	Change %	-8.2		-17.7		-17.4	8.7	2.6	0.1	-7.3		1.7	1.8	-2.5
Men	YCCA	YCCD	YCCG	YCCJ	YCCM	YCCP	YCCS	YCCV	YCCY	YCDB	YCDE	YCDH	YCDK	
	Jun-Aug 2017	747	5.5	223	29.8	203	59	263	2,200	446	20.3	1,151	104	472
	Jun-Aug 2018	733	5.3	217	29.6	205	59	252	2,209	427	19.3	1,180	92	484
	Sep-Nov 2018	732	5.2	213	29.1	202	61	256	2,225	397	17.8	1,229	93	485
	Dec-Feb 2019	707	5.1	216	30.5	181	71	239	2,200	414	18.8	1,229	95	433
	Mar-May 2019	664	4.8	187	28.2	193	60	224	2,256	404	17.9	1,296	94	436
	Jun-Aug 2019	638	4.6	167	26.2	149	64	258	2,171	375	17.3	1,262	91	423
	Change on quarter	-26	-0.2	-20	-2.0	-44	4	34	-85	-30	-0.7	-34	-3	-14
	Change %	-3.9		-10.7		-22.6	6.9	14.9	-3.8	-7.3		-2.6	-3.6	-3.1
	Change on year	-95	-0.7	-50	-3.4	-56	5	6	-38	-52	-2.1	81	-1	-61
	Change %	-12.9		-23.0		-27.2	8.4	2.4	-1.7	-12.2		6.9	-1.4	-12.6
Women	YCCB	YCEE	YCHH	YCKK	YCCN	YCCQ	YCCT	YCCW	YCCZ	YCDC	YCDE	YCDI	YCDL	
	Jun-Aug 2017	848	6.3	220	25.9	228	69	331	6,250	591	9.5	4,817	168	624
	Jun-Aug 2018	789	5.8	190	24.0	238	65	296	6,181	510	8.3	4,824	180	629
	Sep-Nov 2018	800	5.9	196	24.4	246	58	301	6,193	486	7.8	4,861	176	624
	Dec-Feb 2019	839	6.1	193	23.0	272	65	309	6,246	536	8.6	4,866	168	637
	Mar-May 2019	802	5.8	178	22.2	269	70	285	6,286	526	8.4	4,893	186	641
	Jun-Aug 2019	760	5.5	168	22.1	217	71	304	6,228	494	7.9	4,846	186	663
	Change on quarter	-43	-0.3	-10	-0.1	-52	1	19	-58	-32	-0.4	-47	0	22
	Change %	-5.3		-5.9		-19.4	1.4	6.7	-0.9	-6.1		-1.0	-0.1	3.4
	Change on year	-30	-0.3	-22	-2.0	-21	6	8	47	-16	-0.3	22	6	34
	Change %	-3.7		-11.6		-9.0	9.0	2.7	0.8	-3.2		0.5	3.4	5.3

Relationship between columns: 1= 2+3+4+5; 1+6+7; 2=8+9; 3=10+11; 13=15+17+18+19; 20=9+11; 14=13/2; 16=15/13; 22=21/20

Source: Labour Force Survey

1. The split between full-time and part-time employment is based on respondents' self-classification.

Labour market statistics enquiries: labour.market@ons.gov.uk

2. This series does not include all people on these programmes; it only includes those engaging in any form of work, work experience or work-related training.

3. These series cover Employees and Self-employed only. These series include some temporary employees recorded in columns 13 to 19.

4. The total includes those who did not give a reason for working part-time and it therefore does not equal the sum of columns 21, 23, 24 and 25.

EMPLOYMENT AND JOBS

7 Actual weekly hours worked

United Kingdom (hours worked by people aged 16 and over), seasonally adjusted

	Total weekly hours (millions) ¹²	Average (mean) actual weekly hours worked			
		All workers ¹	Full-time workers ³	Part-time workers ³	Second Jobs
		YBUS	YBUY	YBVB	YBVE
People					
Jun-Aug 2017	1,030.6	32.1	37.4	16.3	9.5
Jun-Aug 2018	1,041.1	32.1	37.3	16.3	9.8
Sep-Nov 2018	1,040.1	32.0	37.1	16.3	9.7
Dec-Feb 2019	1,052.9	32.2	37.4	16.3	9.7
Mar-May 2019	1,052.4	32.1	37.4	16.3	9.6
Jun-Aug 2019	1,049.2	32.1	37.3	16.3	10.1
Change on quarter	-3.2	0.0	-0.1	-0.1	0.5
Change %	-0.3	-0.1	-0.3	-0.4	4.8
Change on year	8.1	0.0	-0.1	0.0	0.3
Change %	0.8	-0.1	-0.2	-0.2	2.6
Men					
Jun-Aug 2017	621.4	36.5	39.3	16.1	10.2
Jun-Aug 2018	624.8	36.4	39.1	16.2	10.7
Sep-Nov 2018	626.7	36.3	39.0	16.3	10.6
Dec-Feb 2019	632.3	36.5	39.2	16.4	10.5
Mar-May 2019	626.3	36.2	39.0	16.2	10.7
Jun-Aug 2019	626.5	36.3	39.0	16.3	10.7
Change on quarter	0.2	0.1	0.0	0.0	0.1
Change %	0.0	0.2	-0.1	0.2	0.9
Change on year	1.7	-0.1	-0.1	0.1	0.0
Change %	0.3	-0.2	-0.4	0.6	0.3
Women					
Jun-Aug 2017	409.2	27.1	34.2	16.4	8.9
Jun-Aug 2018	416.4	27.3	34.4	16.4	9.2
Sep-Nov 2018	413.4	27.1	34.0	16.2	9.1
Dec-Feb 2019	420.6	27.3	34.3	16.3	9.1
Mar-May 2019	426.1	27.5	34.7	16.4	8.8
Jun-Aug 2019	422.7	27.4	34.5	16.3	9.6
Change on quarter	-3.4	-0.2	-0.2	-0.1	0.7
Change %	-0.8	-0.6	-0.7	-0.5	8.1
Change on year	6.3	0.1	0.1	-0.1	0.4
Change %	1.5	0.2	0.3	-0.5	4.4

Source: Labour Force Survey

Labour market statistics enquiries: labour.market@ons.gsi.gov.uk

1 Main and second job

2 Total actual weekly hours worked including paid and unpaid overtime.

3 Main job only. The split between full-time and part-time employment is based on respondents' self-classification.

7 (1) Usual weekly hours of work¹

United Kingdom, seasonally adjusted

	All in Employment (%)			Employees (%)			Self-Employed (%)		
	People	Men	Women	People	Men	Women	People	Men	Women
Jun-Aug 2018									
Less than 6 Hours	1.4	0.9	1.9	0.9	0.6	1.2	3.4	1.9	6.3
6 up to 15 hours	6.3	3.4	9.6	5.7	2.9	8.6	9.4	5.0	18.2
16 up to 30 hours	19.9	10.2	30.8	19.4	8.9	30.2	22.7	16.0	36.0
31 up to 45 hours	54.1	59.7	47.7	56.9	63.1	50.4	38.8	45.5	25.4
Over 45 hours	18.3	25.7	10.1	17.1	24.4	9.6	25.7	31.6	14.0
Total (thousands)	32,410	17,176	15,235	27,479	13,916	13,564	4,768	3,176	1,592
Mar-May 2019									
Less than 6 Hours	1.4	0.9	2.1	1.0	0.6	1.4	3.3	1.7	6.6
6 up to 15 hours	6.3	3.6	9.2	5.6	3.0	8.2	9.5	5.6	17.2
16 up to 30 hours	20.1	10.4	30.9	19.6	8.8	30.4	23.2	16.8	35.7
31 up to 45 hours	53.9	59.7	47.4	56.8	63.5	50.0	38.2	44.3	26.1
Over 45 hours	18.3	25.5	10.4	17.1	24.1	9.9	25.9	31.7	14.4
Total (thousands)	32,749	17,280	15,469	27,626	13,897	13,729	4,955	3,294	1,661
Jun-Aug 2019									
Less than 6 Hours	1.5	0.9	2.1	1.0	0.7	1.3	3.6	1.8	7.3
6 up to 15 hours	6.4	3.5	9.6	5.8	3.0	8.7	8.7	4.8	16.5
16 up to 30 hours	19.6	10.1	30.2	19.1	8.8	29.6	22.1	15.5	35.4
31 up to 45 hours	54.0	59.8	47.5	56.8	63.4	50.2	38.7	45.2	25.5
Over 45 hours	18.6	25.7	10.6	17.2	24.2	10.1	26.9	32.6	15.3
Total (thousands)	32,693	17,256	15,437	27,577	13,867	13,710	4,930	3,297	1,633

1 Total usual weekly hours worked by people aged 16 and over in main job including paid and unpaid overtime.

Source: Labour Force Survey

Labour market statistics enquiries: labour.market@ons.gov.uk

NON-UK WORKERS

8(1) Employment levels and rates by country of birth and nationality

(first published on 13 August 2019)

United Kingdom (thousands of people aged 16 and over) not seasonally adjusted																				
	Europe										Africa		Asia			America and Oceania				
	European Union (EU)										Other Europe (not in EU)	Total Africa	Of which: South Africa	Total Asia	Of which: India	Of which: Pakistan and Bangladesh	Total America and Oceania	Of which: USA	Of which: Australia and New Zealand	Total Non-EU ⁷
	Total ¹	UK	Non UK	Total Europe	Total EU (EU27) ²	EU14 ³	EU8 ⁴	EU2 ⁵	Other EU ⁶											
Levels (aged 16 and over)																				
Country of birth	MGTM	JF6F	JF6G	FSC2	EQ4Q	JJR3	JJR5	EQ4R	FSC3	FSC4	FSC5	JJS3	FSC6	JJS7	JJS9	FSC7	JJR7	JJS5	EQ4S	
Apr - Jun 2017	31,996	26,345	5,648	2,595	2,366	972	1,004	358	31	230	981	212	1,527	438	380	546	82	137	3,283	
Apr - Jun 2018	32,321	26,720	5,597	2,575	2,350	1,014	906	391	38	225	877	168	1,508	503	341	638	100	156	3,248	
Jul - Sep 2018	32,503	26,963	5,532	2,517	2,288	978	901	370	39	229	878	159	1,479	473	337	658	96	152	3,244	
Oct - Dec 2018	32,671	27,011	5,651	2,550	2,303	989	886	384	43	248	893	174	1,568	476	344	640	107	130	3,349	
Jan - Mar 2019	32,641	26,838	5,796	2,666	2,420	994	947	438	41	246	933	200	1,536	452	366	662	108	139	3,376	
Apr - Jun 2019	32,752	26,967	5,777	2,692	2,438	1,019	971	407	41	254	923	198	1,504	475	387	658	105	167	3,339	
Change on year	430	246	180	118	88	5	64	15	3	29	46	31	-4	-28	46	20	5	11	91	
Change %	1.3	0.9	3.2	4.6	3.8	0.5	7.1	3.9	8.4	13.1	5.3	18.4	-0.3	-5.6	13.3	3.1	4.6	7.2	2.8	
Nationality	MGTM	JF6H	JF6I	FSC8	EQ4U	JJR4	JJR6	EQ4V	FSC9	FSCE	FSD2	JJS4	FSD3	JJS8	JJT2	FSD4	JJR8	JJS6	EQ4W	
Apr - Jun 2017	31,996	28,454	3,537	2,444	2,349	1,010	995	332	11	96	314	76	508	161	95	271	74	81	1,189	
Apr - Jun 2018	32,321	28,787	3,527	2,373	2,269	990	881	387	11	103	262	55	569	211	101	324	92	103	1,258	
Jul - Sep 2018	32,503	29,028	3,467	2,341	2,231	980	880	360	11	109	249	50	545	187	91	332	100	86	1,236	
Oct - Dec 2018	32,671	29,098	3,569	2,400	2,274	1,011	869	370	24	126	277	64	593	194	107	299	96	71	1,295	
Jan - Mar 2019	32,641	28,943	3,698	2,513	2,381	1,018	925	423	16	132	273	71	597	182	115	315	101	75	1,317	
Apr - Jun 2019	32,752	29,084	3,661	2,490	2,368	1,019	952	375	22	122	289	63	567	187	121	314	78	95	1,292	
Change on year	430	298	133	118	99	29	71	-12	11	18	28	8	-2	-23	20	-10	-14	-9	34	
Change %	1.3	1.0	3.8	5.0	4.4	3.0	8.1	-3.1	95.5	17.8	10.6	13.7	-0.4	-11.1	20.0	-3.1	-14.9	-8.4	2.7	
Rates (aged 16 to 64)																				
Country of birth	LF9D	LFM6	LFM7	FSD5	EQ4Y	LFM8	LFM9	EQ4Z	FSD6	FSD7	FSD8	LFN4	FSD9	LFN6	LFN7	FSE2	LFN2	LFN5	EQ52	
Apr - Jun 2017	74.9	75.5	72.5	79.2	80.6	77.6	82.6	84.7	68.1	67.3	72.4	85.9	62.5	72.7	54.1	76.2	73.1	84.7	67.6	
Apr - Jun 2018	75.4	75.7	74.0	81.2	82.8	79.5	86.8	83.3	72.5	68.3	72.1	83.0	64.2	80.3	54.4	76.6	73.4	85.4	68.7	
Jul - Sep 2018	75.7	76.1	74.2	81.5	82.3	79.7	85.6	82.4	72.2	74.6	72.9	83.5	64.4	77.0	55.5	75.7	74.2	81.5	69.3	
Oct - Dec 2018	76.0	76.3	74.7	81.6	82.6	79.8	86.1	83.5	71.8	73.0	73.3	84.7	65.5	75.5	55.9	77.6	79.1	85.7	70.1	
Jan - Mar 2019	75.9	76.3	74.6	81.8	82.8	80.1	85.1	84.6	79.1	72.7	73.1	88.2	64.6	75.3	57.6	77.8	78.4	84.7	69.7	
Apr - Jun 2019	76.0	76.3	74.6	82.2	83.1	80.2	85.2	86.2	78.3	74.4	73.2	87.4	63.4	75.5	59.0	78.6	73.9	87.7	69.3	
Change on year	0.6	0.5	0.6	1.0	0.4	0.7	-1.6	2.9	5.8	6.1	1.1	4.4	-0.8	-4.8	4.7	2.1	0.5	2.3	0.7	
Nationality	LF9D	LFN8	LFN9	FSE3	EQ54	LFO2	LFO3	EQ55	FSE4	FSE5	FSE6	LFO6	FSE7	LFO8	LFO9	FSE8	LFO4	LFO7	EQ56	
Apr - Jun 2017	74.9	75.2	72.8	79.8	80.8	77.9	83.1	84.3	53.1	60.9	66.8	86.3	53.2	65.2	48.7	73.5	70.7	86.9	60.9	
Apr - Jun 2018	75.4	75.5	74.5	81.5	83.0	80.3	87.0	83.1	46.7	58.3	67.6	89.5	56.4	79.3	49.0	75.5	72.2	86.0	62.8	
Jul - Sep 2018	75.7	75.8	75.0	82.1	82.8	80.6	86.5	82.6	39.6	69.8	68.4	87.1	56.0	72.2	46.7	77.1	76.9	80.5	64.1	
Oct - Dec 2018	76.0	76.0	75.8	82.6	83.3	81.0	86.0	84.5	68.9	72.3	70.5	86.6	58.3	69.7	48.4	77.0	73.7	86.1	65.6	
Jan - Mar 2019	75.9	76.1	75.3	82.1	82.7	79.9	85.0	84.9	75.0	72.9	68.8	91.4	57.2	70.6	50.9	76.9	78.3	82.7	64.8	
Apr - Jun 2019	76.0	76.1	75.0	82.5	83.3	80.8	85.0	85.9	83.7	69.5	70.7	90.2	54.3	69.3	53.8	76.8	73.1	86.3	63.4	
Change on year	0.6	0.6	0.5	1.0	0.3	0.5	-2.0	2.8	36.9	11.2	3.0	0.7	-2.1	-10.0	4.9	1.3	0.9	0.3	0.6	
Source: Labour Force Survey																				

Source: Labour Force Survey

Labour market statistics enquiries: labour.market@ons.gov.uk

1. The total series includes people who do not state their country of birth or nationality. The total levels series MGTM does not therefore equal the sum of the "UK" and "Non-UK" series.

2. This series consists of all 27 EU member states excluding the UK. This series equals the sum of EU14, EU8, EU2 and Other EU.

3. Austria, Belgium, Denmark, Finland, France, Germany, Greece, Ireland, Italy, Luxembourg, Netherlands, Portugal, Spain and Sweden.

4. Czech Republic, Estonia, Hungary, Latvia, Lithuania, Poland, Slovak Republic and Slovenia.

5. Romania and Bulgaria.

6. Cyprus, Malta and Croatia

7. Total Non-EU equals the sum of Other Europe, Total Africa, Total Asia and Total America and Oceania

The estimates shown in this table relate to the number of people in employment and should not be used as a proxy for flows of foreign migrants into the UK.

NON-UK WORKERS

8(2) Unemployment and economic inactivity levels and rates by country of birth and nationality (first published on 13 August 2019)

United Kingdom (thousands of people) not seasonally adjusted

	Unemployment (all aged 16 and over)					Economically inactive (all aged from 16 to 64)									
	Total ¹	UK	Non-UK	EU27 ²	Non-EU	Total ¹		UK		Non-UK		EU27 ²		Non-EU	
						All economically inactive	Of which: Students ³	All economically inactive	Of which: Students ³	All economically inactive	Of which: Students ³	All economically inactive	Of which: Students ³	All economically inactive	Of which: Students ³
Levels (thousands of people)															
By country of birth	MGTP	DSWD	DT35	DT3F	DTKB	LF9L	LF9W	DTLK	DYUP	DYUR	DYVR	DYVZ	DYWL	DYWR	DZ37
Apr - Jun 2017	1,456	1,142	314	97	217	8,875	2,431	7,080	1,882	1,783	548	467	166	1,315	382
Apr - Jun 2018	1,332	1,068	264	79	186	8,834	2,454	7,150	1,926	1,666	525	403	147	1,263	378
Jul - Sep 2018	1,446	1,156	291	85	206	8,589	2,145	6,973	1,711	1,600	431	400	136	1,200	296
Oct - Dec 2018	1,328	1,068	260	78	182	8,598	2,228	6,957	1,757	1,623	470	399	161	1,224	309
Jan - Mar 2019	1,292	1,013	279	84	195	8,663	2,373	6,992	1,851	1,654	521	409	159	1,245	362
Apr - Jun 2019	1,296	1,015	280	74	206	8,659	2,350	7,006	1,864	1,640	485	414	159	1,226	327
Change on year	-36	-53	16	-5	21	-175	-104	-144	-62	-26	-40	11	12	-38	-51
Change %	-2.7	-5.0	6.0	-6.0	11.1	-2.0	-4.2	-2.0	-3.2	-1.6	-7.6	2.8	8.0	-3.0	-13.6
By nationality	MGTP	DSWE	DT39	DTG9	DTKC	LF9L	LF9W	DYTC	DYUQ	DYUS	DYVU	DYWA	DYWM	DYWS	DZGD
Apr - Jun 2017	1,456	1,258	198	99	99	8,875	2,431	7,753	2,029	1,113	401	455	168	658	233
Apr - Jun 2018	1,332	1,172	160	72	89	8,834	2,454	7,782	2,080	1,036	372	387	143	649	229
Jul - Sep 2018	1,446	1,276	170	80	90	8,589	2,145	7,602	1,846	973	297	378	132	596	165
Oct - Dec 2018	1,328	1,154	173	76	97	8,598	2,228	7,630	1,892	954	335	377	165	577	170
Jan - Mar 2019	1,292	1,107	185	86	99	8,663	2,373	7,631	1,982	1,018	390	409	166	609	223
Apr - Jun 2019	1,296	1,110	186	71	114	8,659	2,350	7,621	1,981	1,023	366	399	162	624	204
Change on year	-36	-62	25	0	25	-175	-104	-161	-98	-13	-6	13	19	-26	-25
Change %	-2.7	-5.3	15.9	-0.1	28.8	-2.0	-4.2	-2.1	-4.7	-1.2	-1.7	3.3	13.3	-3.9	-11.1
Rates (%)															
By country of birth	MGUK	DT2W	DT3B	DTJG	DTKD	CRZK		DYTD		DYUT		DYWD		DYWT	
Apr - Jun 2017	4.4	4.2	5.3	4.0	6.2	21.6		21.1		23.4		16.1		27.9	
Apr - Jun 2018	4.0	3.8	4.5	3.2	5.4	21.4		21.1		22.5		14.4		27.4	
Jul - Sep 2018	4.3	4.1	5.0	3.6	6.0	20.8		20.6		21.9		14.6		26.2	
Oct - Dec 2018	3.9	3.8	4.4	3.3	5.1	20.8		20.6		21.9		14.6		26.1	
Jan - Mar 2019	3.8	3.6	4.6	3.4	5.5	21.0		20.8		21.8		14.3		26.3	
Apr - Jun 2019	3.8	3.6	4.6	2.9	5.8	21.0		20.8		21.7		14.4		26.3	
Change on year	-0.2	-0.2	0.1	-0.3	0.4	-0.5		-0.4		-0.8		-0.1		-1.1	
By nationality	MGUK	DT2Z	DT3D	DTKA	DTLH	CRZK		DYUO		DYUU		DYWE		DZ36	
Apr - Jun 2017	4.4	4.2	5.3	4.0	7.7	21.6		21.3		23.1		15.8		34.1	
Apr - Jun 2018	4.0	3.9	4.3	3.1	6.6	21.4		21.3		22.1		14.3		32.8	
Jul - Sep 2018	4.3	4.2	4.7	3.5	6.8	20.8		20.7		21.3		14.2		31.3	
Oct - Dec 2018	3.9	3.8	4.6	3.2	7.0	20.8		20.8		20.5		14.0		29.5	
Jan - Mar 2019	3.8	3.7	4.8	3.5	7.0	21.0		20.9		21.0		14.4		30.3	
Apr - Jun 2019	3.8	3.7	4.8	2.9	8.1	21.0		20.9		21.2		14.2		31.0	
Change on year	-0.2	-0.2	0.5	-0.1	1.5	-0.5		-0.4		-1.0		-0.1		-1.8	

Source: Labour Force Survey
Labour market statistics enquiries: labour.market@ons.gov.uk

1. The total series includes people who do not state their country of birth or nationality. The total levels series therefore do not equal the sum of the "UK" and "Non-UK" series.
2. This series consists of all 27 EU member states excluding the UK.
3. This series consists of those people whose main reason for being economically inactive was because they were students. It does not include all students as some students will be included in the employment and unemployment estimates.

UNEMPLOYMENT

9(1) Unemployment by age and duration

United Kingdom (thousands) seasonally adjusted

		All aged 16 & over							All aged 16 - 64							
		All	Rate (%) ¹	Up to 6 months	Over 6 and up to 12 months	All over 12 months	% over 12 months	All over 24 months	All	Rate (%) ¹	Up to 6 months	Over 6 and up to 12 months	All over 12 months	% over 12 months	All over 24 months	
		1	2	3	4	5	6	7	8	9	10	11	12	13	14	
People		MGSC	MG SX	YBWF	YBWG	YBWH	YBWI	YBWL	LF2I	LF2Q	LF2Y	LF32	LF34	LF36	LF38	
	Jun-Aug 2017	1,452	4.3	841	229	382	26.3	211	1,428	4.4	834	223	370	25.9	208	
	Jun-Aug 2018	1,363	4.0	800	208	355	26.0	196	1,345	4.1	792	205	348	25.9	195	
	Sep-Nov 2018	1,370	4.0	807	216	347	25.3	172	1,355	4.2	795	212	348	25.7	170	
	Dec-Feb 2019	1,343	3.9	796	200	347	25.8	173	1,323	4.0	786	196	340	25.7	169	
	Mar-May 2019	1,292	3.8	766	187	340	26.3	173	1,276	3.9	760	184	332	26.0	168	
	Jun-Aug 2019	1,314	3.9	808	173	333	25.3	159	1,297	4.0	804	170	323	24.9	154	
	Change on quarter	22	0.1	42	-14	-7	-0.9	-14	21	0.1	44	-14	-9	-1.1	-14	
	Change %	1.7		5.5	-7.5	-2.0		-7.9	1.6		5.8	-7.7	-2.6		-8.5	
	Change on year	-49	-0.2	9	-36	-22	-0.7	-37	-48	-0.2	11	-35	-24	-0.9	-41	
Change %	-3.6		1.1	-17.2	-6.2		-19.0	-3.6		1.4	-16.9	-7.0		-21.1		
Men		MGSD	MG SY	MG YK	MG YM	MG YO	YBWJ	YBWM	YBSI	YBTJ	YBWP	YBWS	YBWV	YBWW	YBXY	YBXB
	Jun-Aug 2017	780	4.4	417	140	223	28.6	127	764	4.5	412	136	217	28.3	126	
	Jun-Aug 2018	733	4.1	407	110	217	29.6	117	721	4.2	401	108	212	29.4	116	
	Sep-Nov 2018	739	4.1	403	124	212	28.6	113	730	4.2	395	121	214	29.3	112	
	Dec-Feb 2019	731	4.1	399	118	215	29.4	114	719	4.2	396	116	208	28.9	111	
	Mar-May 2019	712	4.0	395	107	211	29.6	109	704	4.1	391	105	208	29.5	109	
	Jun-Aug 2019	727	4.0	419	96	213	29.2	106	716	4.2	418	93	205	28.7	101	
	Change on quarter	15	0.1	24	-11	2	-0.3	-4	13	0.1	26	-12	-2	-0.8	-7	
	Change %	2.1		6.2	-10.6	0.9		-3.4	1.8		6.8	-11.0	-1.1		-6.8	
	Change on year	-6	-0.1	12	-14	-5	-0.4	-12	-5	0.0	17	-15	-7	-0.8	-15	
Change %	-0.8		3.0	-12.6	-2.1		-10.0	-0.7		4.2	-13.5	-3.3		-12.8		
Women		MGSE	MG SZ	MG YL	MG YN	MG YP	YBWK	YBWN	LF2J	LF2R	LF2Z	LF33	LF35	LF37	LF39	
	Jun-Aug 2017	672	4.3	424	89	159	23.6	84	664	4.3	423	88	154	23.2	82	
	Jun-Aug 2018	629	4.0	393	99	138	21.9	79	624	4.1	391	97	136	21.7	79	
	Sep-Nov 2018	631	4.0	404	92	135	21.4	58	626	4.1	400	91	135	21.5	58	
	Dec-Feb 2019	611	3.8	397	82	132	21.6	59	603	3.9	390	80	132	22.0	58	
	Mar-May 2019	580	3.6	371	80	129	22.2	63	573	3.7	368	80	125	21.7	60	
	Jun-Aug 2019	586	3.7	389	77	120	20.5	53	581	3.8	386	77	118	20.3	53	
	Change on quarter	6	0.0	18	-3	-9	-1.7	-10	8	0.1	17	-3	-6	-1.4	-7	
	Change %	1.1		4.8	-3.4	-6.7		-15.8	1.5		4.7	-3.3	-5.1		-11.7	
	Change on year	-43	-0.3	-4	-22	-17	-1.3	-26	-43	-0.3	-6	-20	-17	-1.4	-26	
Change %	-6.8		-1.0	-22.2	-12.5		-32.6	-6.9		-1.4	-20.7	-12.9		-33.3		
		16-17							18-24							
		All	Rate (%) ¹	Up to 6 months	Over 6 and up to 12 months	All over 12 months	% over 12 months	All over 24 months	All	Rate (%) ¹	Up to 6 months	Over 6 and up to 12 months	All over 12 months	% over 12 months	All over 24 months	
		15	16	17	18	19	20	21	22	23	24	25	26	27	28	
People		YBVH	YBVK	YBXD	YBXG	YBXJ	YBXM	YBXP	YBVN	YBVQ	YBXS	YBXV	YBXY	YBYB	YBYE	
	Jun-Aug 2017	106	23.5	83	18	*	*	*	427	10.9	271	76	80	18.6	29	
	Jun-Aug 2018	94	21.9	73	16	6	6.5	*	373	9.6	247	61	65	17.6	21	
	Sep-Nov 2018	103	24.8	83	17	*	*	*	408	10.3	271	64	73	17.8	25	
	Dec-Feb 2019	88	21.0	69	12	7	8.1	*	404	10.3	276	66	63	15.6	16	
	Mar-May 2019	83	19.6	66	11	7	8.1	*	410	10.7	273	67	70	17.0	17	
	Jun-Aug 2019	86	20.3	66	14	6	6.5	*	408	10.8	284	47	78	19.1	18	
	Change on quarter	3	0.7	0	3	-1	-1.7	*	-1	0.2	11	-20	8	2.1	1	
	Change %	3.2		0.8	31.8	-17.9		*	-0.4		3.9	-30.4	11.7		8.7	
	Change on year	-9	-1.6	-7	-2	-1	0.0	*	36	1.2	37	-14	13	1.5	-2	
Change %	-9.3		-9.2	-9.8	-9.7		*	9.6		15.1	-23.2	19.2		-10.9		
Men		YBVI	YBVL	YBXE	YBXH	YBXK	YBXN	YBXQ	YBVO	YBVR	YBXT	YBXW	YBXZ	YBYC	YBYF	
	Jun-Aug 2017	57	25.8	46	9	*	*	*	247	12.1	138	54	55	22.1	20	
	Jun-Aug 2018	49	22.4	35	8	5	9.6	*	211	10.4	133	35	43	20.2	13	
	Sep-Nov 2018	53	26.4	40	10	*	*	*	236	11.3	145	38	54	22.8	22	
	Dec-Feb 2019	50	23.8	38	7	6	11.4	*	248	12.0	162	43	43	17.3	13	
	Mar-May 2019	47	23.0	38	*	*	*	*	249	12.5	156	43	50	20.1	13	
	Jun-Aug 2019	50	24.2	38	8	*	*	*	246	12.4	161	30	56	22.7	14	
	Change on quarter	3	1.2	0	*	*	*	*	-3	-0.1	5	-14	6	2.7	0	
	Change %	7.4		0.2	*	*	*	*	-1.4		3.0	-32.0	11.7		3.6	
	Change on year	2	1.9	3	0	*	*	*	35	2.1	27	-6	13	2.5	0	
Change %	3.1		7.0	-4.9	*	*	*	16.7		20.5	-15.7	31.3		1.5		
Women		YBVJ	YBVM	YBXF	YBXI	YBXL	YBXO	YBXR	YBVP	YBVS	YBXU	YBXX	YBYA	YBYD	YBYG	
	Jun-Aug 2017	49	21.3	36	9	*	*	*	181	9.6	133	22	25	13.9	9	
	Jun-Aug 2018	46	21.4	37	7	*	*	*	162	8.8	113	26	23	14.2	7	
	Sep-Nov 2018	50	23.4	42	7	*	*	*	172	9.2	126	26	19	11.0	*	
	Dec-Feb 2019	38	18.1	32	5	*	*	*	156	8.3	113	22	20	13.0	*	
	Mar-May 2019	36	16.4	28	6	*	*	*	160	8.7	117	24	20	12.3	*	
	Jun-Aug 2019	36	16.5	28	6	*	*	*	162	9.1	123	17	22	13.6	5	
	Change on quarter	-1	0.1	0	0	*	*	*	2	0.3	6	-6	2	1.3	*	
	Change %	-2.1		1.5	-4.6	*	*	*	1.2		5.2	-27.6	12.0		*	
	Change on year	-10	-4.9	-9	-1	*	*	*	1	0.2	10	-9	-1	-0.5	-2	
Change %	-22.4		-24.6	-15.3	*	*	*	0.4		8.7	-33.4	-3.3		-34.3		

Relationship between columns: 1=3+4+5; 8=10+11+12; 15=17+18+19; 22=24+25+26.

¹Denominator = economically active for that age group.

Source: Labour Force Survey

Labour market statistics enquiries: labour.market@ons.gov.uk

UNEMPLOYMENT

9(2) Unemployment by age and duration

United Kingdom (thousands) seasonally adjusted

		25-49							50 and over						
		All	Rate (%) ¹	Up to 6 months	Over 6 and up to 12 months	All over 12 months	% over 12 months	All over 24 months	All	Rate (%) ¹	Up to 6 months	Over 6 and up to 12 months	All over 12 months	% over 12 months	All over 24 months
		1	2	3	4	5	6	7	8	9	10	11	12	13	14
		MGVI	MGXB	YBYH	YBYK	YBYN	YBYQ	YBYT	YBVT	YBVW	YBYW	YBYZ	YBZC	YBZF	YBZI
People	Jun-Aug 2017	616	3.3	352	82	181	29.5	105	303	3.0	135	52	117	38.4	74
	Jun-Aug 2018	595	3.1	331	86	178	30.0	108	301	2.8	149	47	105	34.8	66
	Sep-Nov 2018	575	3.0	326	91	158	27.4	77	284	2.7	128	44	112	39.6	68
	Dec-Feb 2019	561	3.0	322	83	156	27.8	85	289	2.7	128	40	121	41.8	71
	Mar-May 2019	524	2.8	299	68	156	29.8	93	275	2.6	128	41	107	38.7	63
	Jun-Aug 2019	548	2.9	324	69	155	28.2	79	271	2.5	134	43	94	34.8	59
	Change on quarter	25	0.1	25	1	-1	-1.6	-14	-4	-0.1	6	2	-12	-3.9	-3
	Change %	4.7		8.4	1.2	-0.9		-14.9	-1.6		4.6	5.2	-11.6		-5.4
	Change on year	-46	-0.3	-7	-16	-23	-1.7	-29	-30	-0.3	-15	-4	-10	0.0	-7
	Change %	-7.8		-2.0	-19.2	-13.1		-26.9	-9.9		-10.3	-8.2	-10.0		-10.3
Men		MGVJ	MGXC	YBYI	YBYL	YBYO	YBYR	YBYU	YBVU	YBVX	YBYX	YBZA	YBZD	YBZG	YBZJ
	Jun-Aug 2017	296	3.0	157	43	96	32.4	62	180	3.3	76	33	71	39.5	44
	Jun-Aug 2018	312	3.1	164	41	108	34.5	70	162	2.9	74	25	62	38.5	34
	Sep-Nov 2018	294	2.9	154	52	87	29.7	51	155	2.7	64	24	67	43.4	40
	Dec-Feb 2019	272	2.7	138	44	89	32.9	58	161	2.8	60	24	77	47.7	42
	Mar-May 2019	266	2.6	140	36	90	33.7	59	150	2.6	61	23	66	44.2	38
	Jun-Aug 2019	272	2.7	147	32	93	34.2	50	159	2.8	73	26	60	37.4	42
	Change on quarter	6	0.1	7	-5	3	0.5	-9	9	0.2	12	4	-7	-6.8	4
	Change %	2.3		5.3	-12.7	3.7		-14.7	6.1		20.3	15.4	-10.3		10.2
	Change on year	-40	-0.4	-17	-9	-15	-0.3	-20	-2	-0.1	-1	1	-3	-1.1	7
	Change %	-12.9		-10.2	-21.8	-13.7		-28.4	-1.5		-0.9	3.7	-4.2		21.6
Women		MGVK	MGXD	YBYJ	YBYM	YBYP	YBYS	YBYV	YBVV	YBVY	YBYV	YBZB	YBZE	YBZH	YBZK
	Jun-Aug 2017	320	3.6	195	39	85	26.7	43	123	2.6	59	19	45	36.9	30
	Jun-Aug 2018	282	3.2	167	45	70	25.0	39	139	2.8	75	21	43	30.6	32
	Sep-Nov 2018	281	3.2	172	38	70	25.0	26	128	2.6	63	20	45	35.0	29
	Dec-Feb 2019	289	3.2	184	39	66	22.9	27	128	2.5	68	16	44	34.4	29
	Mar-May 2019	258	2.9	159	32	67	25.8	35	125	2.5	67	18	40	32.2	25
	Jun-Aug 2019	276	3.1	177	37	62	22.4	29	112	2.2	61	16	35	31.1	18
	Change on quarter	19	0.2	18	5	-5	-3.4	-5	-13	-0.3	-7	-1	-6	-1.1	-7
	Change %	7.2		11.2	17.1	-7.0		-15.3	-10.7		-9.7	-7.9	-13.7		-29.2
	Change on year	-6	-0.1	10	-8	-9	-2.6	-9	-27	-0.6	-15	-5	-8	0.5	-14
	Change %	-2.1		6.1	-16.8	-12.2		-24.0	-19.7		-19.5	-22.6	-18.5		-44.8

Relationship between columns: 1=3+4+5; 8=10+11+12.

¹Denominator = economically active for that age group.

Source: Labour Force Survey

Labour market statistics enquiries: labour.market@ons.gov.uk

ECONOMIC ACTIVITY AND INACTIVITY

10 Economic activity by age

United Kingdom (thousands) seasonally adjusted

All aged 16 & over	16 - 64	16 - 17	18 - 24	25 - 34	35 - 49	50 - 64	65+
1	2	3	4	5	6	7	8

Economically active

People	MGSF	LF2K	YBZL	YBZO	YBZR	YBZU	LF3A	LFK8
Jun-Aug 2017	33,556	32,358	450	3,932	7,712	11,179	9,086	1,198
Jun-Aug 2018	33,773	32,518	432	3,863	7,731	11,160	9,333	1,255
Sep-Nov 2018	33,912	32,627	416	3,949	7,747	11,177	9,338	1,285
Dec-Feb 2019	34,063	32,761	420	3,933	7,812	11,168	9,428	1,302
Mar-May 2019	34,041	32,698	425	3,842	7,818	11,157	9,455	1,343
Jun-Aug 2019	34,006	32,663	423	3,774	7,822	11,142	9,501	1,344
Change on quarter	-35	-35	-1	-68	4	-15	46	0
Change %	-0.1	-0.1	-0.3	-1.8	0.0	-0.1	0.5	0.0
Change on year	233	145	-9	-88	91	-17	168	89
Change %	0.7	0.4	-2.0	-2.3	1.2	-0.2	1.8	7.1
Men	MGSG	YBSL	YBZM	YBZP	YBZS	YBZV	YBZY	YCAE
Jun-Aug 2017	17,783	17,051	222	2,045	4,135	5,886	4,764	732
Jun-Aug 2018	17,909	17,162	217	2,035	4,151	5,878	4,880	747
Sep-Nov 2018	18,013	17,216	201	2,090	4,176	5,873	4,877	797
Dec-Feb 2019	18,043	17,252	211	2,061	4,191	5,869	4,919	791
Mar-May 2019	17,993	17,185	202	2,000	4,200	5,870	4,914	807
Jun-Aug 2019	17,984	17,201	206	1,982	4,195	5,877	4,940	782
Change on quarter	-9	16	4	-18	-5	7	27	-25
Change %	0.0	0.1	2.0	-0.9	-0.1	0.1	0.5	-3.1
Change on year	74	39	-10	-54	44	-1	60	35
Change %	0.4	0.2	-4.8	-2.6	1.1	0.0	1.2	4.7
Women	MGSF	LF2L	YBZN	YBZQ	YBZT	YBZW	LF3B	LFK9
Jun-Aug 2017	15,774	15,308	228	1,887	3,577	5,293	4,322	466
Jun-Aug 2018	15,864	15,356	215	1,827	3,580	5,281	4,453	508
Sep-Nov 2018	15,899	15,411	215	1,860	3,571	5,303	4,461	488
Dec-Feb 2019	16,021	15,509	209	1,871	3,621	5,299	4,509	511
Mar-May 2019	16,048	15,512	222	1,842	3,619	5,287	4,542	536
Jun-Aug 2019	16,023	15,462	217	1,793	3,627	5,265	4,560	561
Change on quarter	-26	-51	-5	-50	8	-22	19	25
Change %	-0.2	-0.3	-2.4	-2.7	0.2	-0.4	0.4	4.7
Change on year	159	105	2	-35	47	-17	108	54
Change %	1.0	0.7	0.8	-1.9	1.3	-0.3	2.4	10.6

Economic activity rates (%)¹

People	MGWG	LF22	YCAC	YCAJ	YCAM	YCAP	LF2C	LFL2
Jun-Aug 2017	63.6	78.6	31.6	69.5	86.8	87.2	73.4	10.3
Jun-Aug 2018	63.7	78.8	31.0	69.1	86.6	87.4	74.3	10.6
Sep-Nov 2018	63.8	79.0	29.9	70.9	86.7	87.6	74.0	10.9
Dec-Feb 2019	64.0	79.3	30.2	70.9	87.3	87.6	74.5	11.0
Mar-May 2019	63.9	79.1	30.5	69.5	87.3	87.6	74.4	11.3
Jun-Aug 2019	63.8	79.0	30.3	68.5	87.3	87.6	74.5	11.2
Change on quarter	-0.1	-0.1	-0.2	-1.0	0.0	-0.1	0.1	0.0
Change on year	0.1	0.2	-0.7	-0.5	0.7	0.2	0.3	0.6
Men	MGWH	MGSP	YCAH	YCAK	YCAN	YCAQ	MGWQ	MGWT
Jun-Aug 2017	68.9	83.4	30.4	70.9	93.3	93.0	78.3	13.7
Jun-Aug 2018	69.0	83.6	30.4	71.3	92.8	93.2	79.1	13.7
Sep-Nov 2018	69.3	83.9	28.2	73.4	93.2	93.2	78.8	14.6
Dec-Feb 2019	69.3	84.0	29.7	72.7	93.3	93.3	79.2	14.4
Mar-May 2019	69.0	83.6	28.4	70.8	93.4	93.4	78.8	14.6
Jun-Aug 2019	68.9	83.6	28.9	70.5	93.2	93.5	79.0	14.1
Change on quarter	-0.1	0.0	0.5	-0.4	-0.2	0.2	0.2	-0.5
Change on year	-0.1	0.0	-1.5	-0.8	0.4	0.3	-0.1	0.4
Women	MGWI	LF23	YCAI	YCAL	YCAO	YCAR	LF2D	LFL3
Jun-Aug 2017	58.5	73.9	32.9	68.1	80.4	81.5	68.6	7.4
Jun-Aug 2018	58.6	74.0	31.6	66.8	80.4	81.7	69.6	8.0
Sep-Nov 2018	58.6	74.3	31.7	68.2	80.1	82.1	69.4	7.7
Dec-Feb 2019	59.0	74.7	30.7	68.9	81.2	82.1	69.9	8.0
Mar-May 2019	59.0	74.7	32.7	68.1	81.1	82.0	70.2	8.4
Jun-Aug 2019	58.9	74.4	31.9	66.5	81.3	81.7	70.2	8.7
Change on quarter	-0.2	-0.3	-0.9	-1.6	0.2	-0.3	0.0	0.4
Change on year	0.3	0.4	0.3	-0.3	1.0	0.1	0.7	0.7

Relationship between columns: 1= 2+8; 2=3+4+5+6+7.

¹Denominator = all persons in the relevant age group.

Data source: Labour Force Survey

Labour market statistics enquiries: labour.market@ons.gov.uk

ECONOMIC ACTIVITY AND INACTIVITY

11 Economic inactivity: reasons

United Kingdom (thousands) seasonally adjusted

		Total aged 16-64	Economic inactivity by reason (aged 16 to 64)						Wanting/not wanting a job (aged 16 to 64)		
			Student	Looking after family / home	Temp sick	Long-term sick	Discouraged workers	Retired	Other	Does not want job	Wants a job ¹
		1	2	3	4	5	6	7	8	9	10
		LF2M	LF63	LF65	LF67	LF69	LFL8	LF6B	LF6D	LFL9	LFM2
People											
	Jun-Aug 2017	8,806	2,333	2,073	183	2,023	33	1,190	971	6,791	2,016
	Jun-Aug 2018	8,740	2,364	2,041	168	2,032	31	1,120	983	6,832	1,907
	Sep-Nov 2018	8,650	2,265	2,048	179	1,992	35	1,123	1,008	6,799	1,851
	Dec-Feb 2019	8,536	2,227	2,008	189	1,979	33	1,111	990	6,707	1,830
	Mar-May 2019	8,619	2,289	2,014	165	2,016	31	1,120	984	6,776	1,844
	Jun-Aug 2019	8,676	2,316	1,980	169	2,069	39	1,120	982	6,792	1,884
	Change on quarter	57	27	-34	4	53	8	1	-2	16	40
	Change %	0.7	1.2	-1.7	2.5	2.6	27.1	0.1	-0.2	0.2	2.2
	Change on year	-63	-48	-61	1	37	8	0	-1	-40	-23
Change %	-0.7	-2.0	-3.0	0.3	1.8	26.4	0.0	-0.1	-0.6	-1.2	
Men		YBSO	BEEX	BEAQ	BEDI	BEDL	YCFP	BEDR	BEDU	YBWA	YBWD
	Jun-Aug 2017	3,404	1,174	229	91	997	19	476	418	2,583	821
	Jun-Aug 2018	3,356	1,179	221	76	995	17	455	412	2,576	780
	Sep-Nov 2018	3,314	1,133	228	84	948	24	475	423	2,566	747
	Dec-Feb 2019	3,290	1,122	212	94	939	22	491	409	2,557	733
	Mar-May 2019	3,368	1,168	224	86	948	20	500	422	2,618	751
	Jun-Aug 2019	3,366	1,160	227	73	962	24	508	411	2,598	768
	Change on quarter	-3	-8	3	-13	14	4	8	-11	-20	17
	Change %	-0.1	-0.7	1.4	-15.0	1.5	19.2	1.5	-2.5	-0.8	2.3
	Change on year	10	-19	6	-3	-33	7	53	-1	22	-12
Change %	0.3	-1.6	2.7	-3.9	-3.3	41.0	11.6	-0.3	0.8	-1.5	
Women		LF2N	LF64	LF66	LF68	LF6A	LFM3	LF6C	LF6E	LFM4	LFM5
	Jun-Aug 2017	5,402	1,159	1,844	92	1,026	14	714	553	4,208	1,194
	Jun-Aug 2018	5,384	1,186	1,820	92	1,037	14	665	571	4,256	1,128
	Sep-Nov 2018	5,336	1,133	1,820	95	1,043	11	648	585	4,232	1,104
	Dec-Feb 2019	5,246	1,105	1,796	95	1,039	10	620	580	4,150	1,096
	Mar-May 2019	5,251	1,122	1,790	78	1,069	11	619	562	4,158	1,093
	Jun-Aug 2019	5,310	1,156	1,753	95	1,107	15	612	571	4,194	1,116
	Change on quarter	59	35	-37	17	38	5	-7	9	36	23
	Change %	1.1	3.1	-2.1	21.8	3.6	42.0	-1.1	1.6	0.9	2.1
	Change on year	-74	-29	-67	4	70	1	-53	0	-62	-12
Change %	-1.4	-2.5	-3.7	3.8	6.8	8.8	-7.9	0.0	-1.5	-1.0	
Percentage of economically inactive aged from 16 to 64 (%)											
People		LF6V	LF6X	LF6Z	LF73	LF75	LF77	LF79	LF7B	LF7D	LF7F
	Jun-Aug 2017	100	26.5	23.5	2.1	23.0	0.4	13.5	11.0	77.1	22.9
	Jun-Aug 2018	100	27.1	23.3	1.9	23.2	0.4	12.8	11.3	78.2	21.8
	Sep-Nov 2018	100	26.2	23.7	2.1	23.0	0.4	13.0	11.7	78.6	21.4
	Dec-Feb 2019	100	26.1	23.5	2.2	23.2	0.4	13.0	11.6	78.6	21.4
	Mar-May 2019	100	26.6	23.4	1.9	23.4	0.4	13.0	11.4	78.6	21.4
	Jun-Aug 2019	100	26.7	22.8	1.9	23.8	0.5	12.9	11.3	78.3	21.7
Men		BEBP	BEEH	BEEK	BEEN	BEEQ	BEET	BEEW	BEEZ	BEAS	BEGT
	Jun-Aug 2017	100	34.5	6.7	2.7	29.3	0.6	14.0	12.3	75.9	24.1
	Jun-Aug 2018	100	35.1	6.6	2.3	29.7	0.5	13.6	12.3	76.8	23.2
	Sep-Nov 2018	100	34.2	6.9	2.5	28.6	0.7	14.3	12.8	77.4	22.6
	Dec-Feb 2019	100	34.1	6.4	2.9	28.5	0.7	14.9	12.4	77.7	22.3
	Mar-May 2019	100	34.7	6.6	2.6	28.1	0.6	14.9	12.5	77.7	22.3
	Jun-Aug 2019	100	34.5	6.7	2.2	28.6	0.7	15.1	12.2	77.2	22.8
Women		LF6W	LF6Y	LF72	LF74	LF76	LF78	LF7A	LF7C	LF7E	LF7G
	Jun-Aug 2017	100	21.5	34.1	1.7	19.0	0.3	13.2	10.2	77.9	22.1
	Jun-Aug 2018	100	22.0	33.8	1.7	19.3	0.3	12.3	10.6	79.1	20.9
	Sep-Nov 2018	100	21.2	34.1	1.8	19.5	0.2	12.1	11.0	79.3	20.7
	Dec-Feb 2019	100	21.1	34.2	1.8	19.8	0.2	11.8	11.1	79.1	20.9
	Mar-May 2019	100	21.4	34.1	1.5	20.4	0.2	11.8	10.7	79.2	20.8
	Jun-Aug 2019	100	21.8	33.0	1.8	20.8	0.3	11.5	10.8	79.0	21.0

Relationship between columns : 1=2+3+4+5+6+7+8; 1=9+10.

Data Source: Labour Force Survey.

Labour market statistics enquiries: labour.market@ons.gov.uk

1. This series comprises those who say they would like a regular paid job, but who do not meet the internationally agreed definition of unemployment because they have not been looking for work in the last four weeks and/or they were unable to start working within two weeks.

ECONOMIC ACTIVITY AND INACTIVITY

12 Educational status, economic activity and inactivity of people aged from 16 to 24

June - August 2019

United Kingdom (thousands) seasonally adjusted

All aged 16 to 24					In full-time education (FTE)				Not in full-time education (FTE) ¹			
Total	Employed	Unemployed	Economically inactive		Total	Employed ²	Unemployed ²	Economically inactive	Total	Employed	Unemployed	Economically inactive
1	2	3	4		5	6	7	8	9	10	11	12

Levels

People

16-17	1,395	338	86	971	1,196	252	58	885	199	85	27	86
18-24	5,509	3,366	408	1,734	1,859	609	79	1,170	3,650	2,757	330	564
16-24	6,903	3,704	494	2,706	3,054	862	137	2,055	3,849	2,842	357	650

Men

16-17	714	156	50	508	599	104	30	465	116	52	20	43
18-24	2,813	1,736	246	831	890	255	33	601	1,923	1,480	213	230
16-24	3,528	1,892	296	1,339	1,489	360	63	1,066	2,039	1,532	233	273

Women

16-17	680	181	36	463	597	148	29	420	83	34	7	43
18-24	2,695	1,630	162	903	969	354	45	569	1,727	1,276	117	334
16-24	3,376	1,811	198	1,366	1,566	502	74	990	1,810	1,310	124	377

Changes on quarter

People

16-17	3	-4	3	4	-22	-4	-3	-15	25	0	6	19
18-24	-21	-66	-1	47	7	-5	-3	15	-28	-61	2	32
16-24	-18	-70	1	51	-15	-9	-6	1	-3	-61	8	50

Men

16-17	2	1	3	-3	-8	0	-4	-4	9	1	7	1
18-24	-11	-14	-3	7	-19	-16	-13	9	8	1	9	-2
16-24	-9	-14	0	4	-27	-16	-16	5	18	2	16	-1

Women

16-17	1	-5	-1	7	-14	-4	0	-11	15	-1	-1	17
18-24	-10	-52	2	40	26	10	10	6	-36	-62	-8	34
16-24	-9	-56	1	46	12	6	10	-4	-21	-63	-9	51

Rates(%)³

People

16-17	24.2	20.3	69.7	21.1	18.8	74.0	42.9	24.2	43.4
18-24	61.1	10.8	31.5	32.8	11.5	63.0	75.5	10.7	15.4
16-24	53.7	11.8	39.2	28.2	13.7	67.3	73.8	11.2	16.9

Men

16-17	21.9	24.2	71.1	17.4	22.1	77.6	44.9	28.2	37.5
18-24	61.7	12.4	29.5	28.7	11.6	67.5	77.0	12.6	12.0
16-24	53.6	13.5	38.0	24.2	14.9	71.6	75.2	13.2	13.4

Women

16-17	26.6	16.5	68.1	24.7	16.3	70.4	40.2	17.1	51.5
18-24	60.5	9.1	33.5	36.6	11.4	58.8	73.9	8.4	19.3
16-24	53.7	9.9	40.5	32.0	12.9	63.2	72.4	8.6	20.8

Changes on quarter

People

16-17	-0.3	0.7	0.2	0.1	-0.6	0.1	-6.1	4.4	4.6
18-24	-1.0	0.2	1.0	-0.4	-0.3	0.6	-1.1	0.2	1.0
16-24	-0.9	0.2	0.8	-0.2	-0.4	0.4	-1.5	0.4	1.3

Men

16-17	0.0	1.2	-0.5	0.2	-2.2	0.3	-3.4	7.9	-2.0
18-24	-0.3	-0.1	0.4	-1.1	-2.9	2.4	-0.3	0.5	-0.2
16-24	-0.2	0.1	0.2	-0.6	-2.6	1.6	-0.6	0.8	-0.2

Women

16-17	-0.7	0.1	0.9	-0.1	0.6	-0.1	-10.1	-2.0	13.7
18-24	-1.7	0.3	1.6	0.1	1.9	-1.0	-2.0	-0.1	2.3
16-24	-1.5	0.3	1.5	0.2	1.4	-0.8	-2.6	-0.2	3.0

Relationship between columns: 1=5+9; 2=6+10; 3=7+11.

Source: Labour Force Survey

Labour market statistics enquiries: labour.market@ons.gov.uk

1. Not in full-time education includes people in part-time education and/or some form of training. Estimates of the number of young people who were not in employment, education or training ("NEET") cannot therefore be derived from this table. Estimates of young people who were NEET are published separately at:

<https://www.ons.gov.uk/employmentandlabourmarket/peopleinwork/unemployment/bulletins/youngpeoplenotinfulltimeeducationemploymentortrainingneet/latest>

2. People in full-time education are employed if they have a part-time job or unemployed if they are looking for part-time employment.

3. Denominator = all persons in the relevant age group for economically active, total in employment and economically inactive; economically active for unemployment.

REDUNDANCIES

22 Redundancies: level and rates ¹

United Kingdom (seasonally adjusted)

	People (aged 16 and over)		Men (aged 16 and over)		Women (aged 16 and over)	
	Level (000s)	Rate ¹	Level (000s)	Rate ¹	Level (000s)	Rate ¹
	BEAO	BEIR	BEIU	BEIX	BEJA	BEJD
Jun-Aug 2017	107	4.0	62	4.5	45	3.4
Jun-Aug 2018	90	3.3	49	3.5	40	3.0
Sep-Nov 2018	91	3.3	46	3.3	45	3.4
Dec-Feb 2019	88	3.2	56	4.0	32	2.4
Mar-May 2019	101	3.6	55	4.0	45	3.3
Jun-Aug 2019	115	4.1	58	4.2	56	4.1
change on quarter	14	0.5	3	0.2	11	0.8
change %	13.9		5.3		24.3	
change on year	25	0.9	9	0.6	16	1.1
change %	27.9		18.2		39.7	

Data source: Labour Force Survey

Labour market statistics enquiries: labour.market@ons.gov.uk

1. The redundancy rate is the ratio of the redundancy level for the given quarter to the seasonally adjusted number of employees in the previous quarter, multiplied by 1,000.