

Services Producer Price Index, Quarter 4 (Oct to Dec) 2015



Coverage: UK

Date: **24 February 2016**

Geographical Area: UK

Theme: **Economy**

Main points

- The price of services sold by UK companies, as estimated by the aggregate Services Producer Price Index (SPPI), increased 0.6% in the year to quarter 4 of 2015, compared with an increase of 0.2% in the year to quarter 3 of 2015.
- Between quarters 3 and 4 of 2015, the aggregate SPPI rose by 0.4%, compared with no movement between quarters 2 and 3 of 2015.
- Real estate activities continued to show the largest rise in prices, with prices increasing by 3.7% in the year to quarter 4 of 2015.
- Water supply, sewerage and waste management services showed the largest fall in prices, decreasing by 9.4% in the year to quarter 4 of 2015.

What is Services Producer Price Inflation?

The [Services Producer Price Index \(SPPI\)](#) provides a measure of inflation for the UK service sector. It is constructed from a statutory quarterly survey which measures changes in the price received for selected services provided by UK businesses to other UK businesses and government. Individual SPPIs are available which provide information on price change for a selection of service industries. These individual price indices are also aggregated together to create a service industry SPPI with limited coverage (it does not provide full coverage of the “service sector”).

The primary use of the SPPI is as a deflator in the UK National Accounts. However, it is also important as an inflationary measure to inform monetary policy and to account for inflation in long-term service procurement contracts. For more information on the use made of SPPI please see the separate document [Users of Services Producer Price Indices data \(67.2 Kb Pdf\)](#).

The figures presented in this statistical bulletin are considered provisional for the latest 2 quarters (quarters 3 and 4 of 2015) and may be revised as late data is received.

None of the indices presented in this bulletin are seasonally adjusted.

Coverage of SPPI

The service sector currently accounts for around 78% of the UK economy based on its weight in Gross Domestic Product (GDP). We do not currently produce an SPPI for every industry in the service sector and so the aggregate SPPI is a partial, best estimate, of the overall inflation to UK businesses in the service sector. Currently, we estimate that the SPPIs presented in this statistical bulletin represent 59% of the total service sector at industry level. The SPPI's coverage of the service sector at Standard Industrial Classification (SIC) class, division and section level is available in the [SPPI coverage document](#). As resources allow, we will continue to review the existing SPPIs and expand coverage through developing SPPIs for new industries. As such, the aggregate SPPI will change composition from time to time but will always remain our best estimate of inflation in the UK service sector. The fact that coverage may change over time should be considered by users when deciding which indices best meet their needs.

Newly developed SPPIs

A development project to increase the industrial coverage of the SPPI took place between 2009 and 2012, which resulted in the development of 8 new SPPIs. These are:

- accountancy services
- legal services
- architectural services
- engineering services
- cargo handling services
- advertising services
- business management consultancy
- storage and warehousing

Since their development, [these indices have been published as experimental series](#). Since the quarter 4 2013 release, these indices are no longer published separately but are instead included in this release and make up part of the aggregate SPPI. The inclusion of these new indices has changed the composition of the aggregate SPPI, increasing the coverage of the service industry and improving the measure. Further information about the impact of adding these new indices to the aggregate can be found in the [quarter 4 2013 statistical bulletin](#).

All of the statistics contained in this release are official statistics. However, since these newly developed series have not yet undergone a full assessment against the [Code of Practice for Official Statistics by the UK Statistics Authority](#) they cannot currently be labelled as National Statistics.

Summary

Between mid-2005 and mid-2008, the annual rate of inflation in the service sector, as estimated by the aggregate Services Producer Price Index (SPPI), rose steadily from an annual rate of 1.3% in quarter 2 of 2005 to a peak of 3.7% during quarters 1 and 2 of 2008. At the end of 2008, the rate of inflation fell rapidly, from annual inflation of 3.6% in quarter 3 of 2008 to deflation (prices lower than they were in the same quarter of the previous year) of 1.6% in quarter 3 of 2009.

The annual rate of inflation began to increase at the end of 2009, reaching its post-economic downturn high of 1.8% in quarter 2 of 2010. Since mid-2010, inflation has tended to remain relatively steady at around 1%. In quarter 4 of 2015, prices increased by 0.6%.

Looking at the latest estimates (Table A) of the aggregate SPPI for quarter 4 of 2015, the main movements were:

- prices received by UK service providers increased 0.6% in the year to quarter 4 of 2015, up from an increase of 0.2% in quarter 3 of 2015
- the main upward contributions to the annual rate came from increases in the prices charged for professional, scientific and technical activities, real estate activities, and transport and storage services, however, these were partially offset by falls in the price of information and communication services, and water supply, sewerage and waste management services
- service prices rose 0.4% between quarter 3 and 4 of 2015, compared with no movement between quarters 2 and 3 of 2015
- the main upward contribution to the quarterly rate of inflation came from professional, scientific and technical activities, and administrative and support services
- water supply, sewerage and waste management services showed the greatest decrease in the quarterly rate of inflation

Table A: Output prices (gross sector) - aggregate Services Producer Price Index

Quarter 4 (Oct to Dec) 2015, United Kingdom

		Percentage change	
		Year	Quarter
2011	Q2	1.1	1.0
	Q3	1.1	-0.5
	Q4	1.2	0.4
2012	Q1	1.3	0.4
	Q2	0.8	0.5
	Q3	1.5	0.2
	Q4	1.5	0.4
2013	Q1	1.5	0.4
	Q2	0.8	-0.2
	Q3	0.8	0.2
	Q4	1.3	0.9
2014	Q1	0.9	0.0
	Q2	1.5	0.4
	Q3	1.5	0.2
	Q4	0.6	0.0
2015	Q1	0.5	-0.1
	Q2	0.4	0.3
	Q3	0.2	0.0
	Q4	0.6	0.4

Table source: Office for National Statistics**Table notes:**

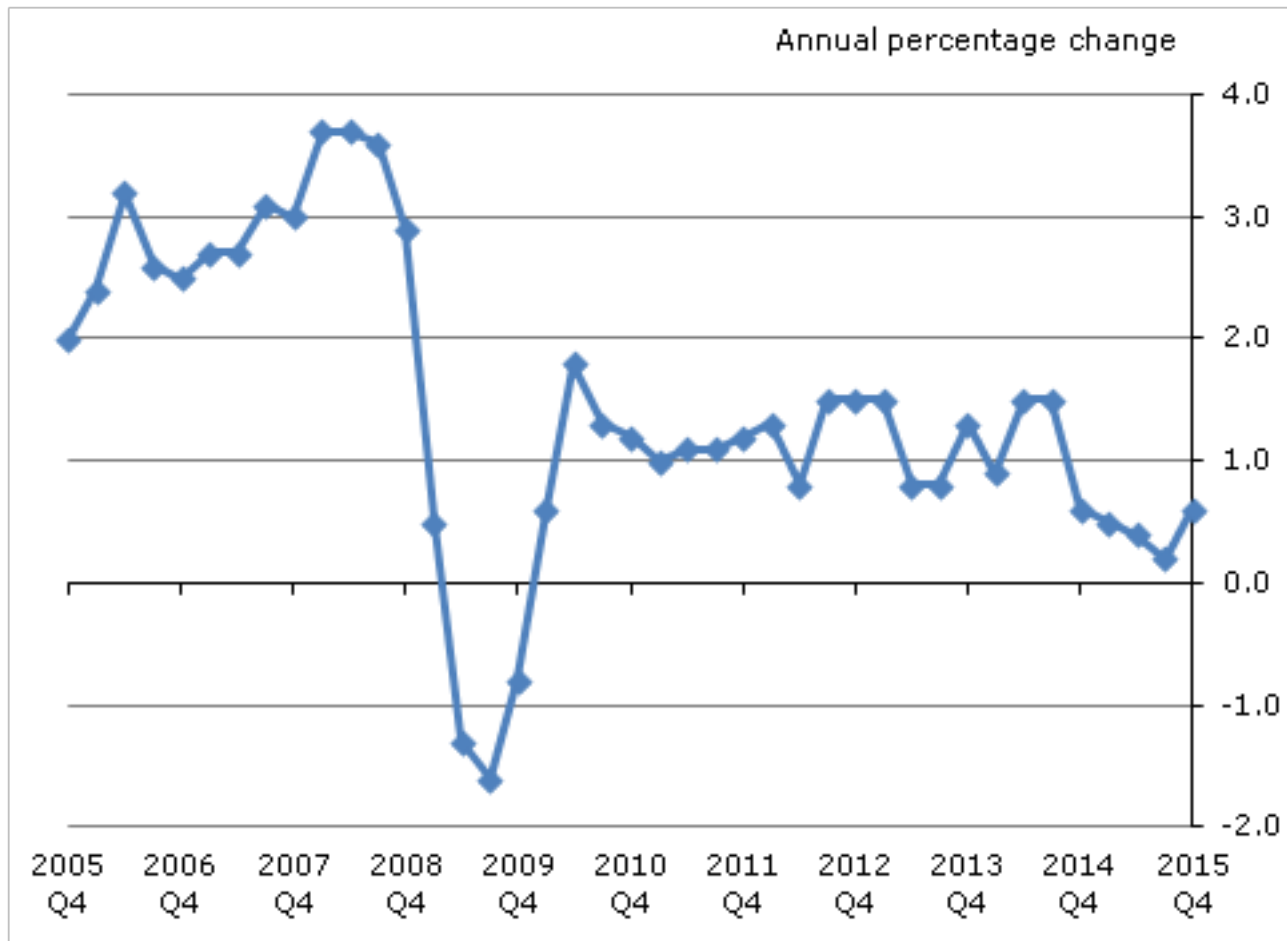
1. The aggregate SPPI is calculated on a gross sector basis.
2. The aggregate SPPI is an aggregate of the individual industry level SPPIs (excluding financial intermediation) published in the SPPI Statistical Bulletin. It does not provide full coverage of the service sector.
3. Not all of the industry level SPPIs used to construct the aggregate SPPI are National Statistics.
4. Q1 refers to Quarter 1 (January to March), Q2 refers to Quarter 2 (April to June), Q3 refers to Quarter 3 (July to September) and Q4 refers to Quarter 4 (October to December).

Download table

[XLS](#) [XLS format](#)
(27 Kb)

Figure A: Aggregate Services Producer Price Index

Quarter 4 (Oct to Dec) 2005 to Quarter 4 (Oct to Dec) 2015, United Kingdom



Source: Services Producer Price Index (SPPI) - Office for National Statistics

Notes:

1. The aggregate SPPI is calculated on a gross sector basis.
2. The aggregate SPPI is an aggregate of the individual industry level SPPIs (excluding financial intermediation) published in the SPPI Statistical Bulletin. It does not provide full coverage of the service sector.
3. Not all of the industry level SPPIs used to construct the aggregate SPPI are National Statistics.
4. Q1 refers to Quarter 1 (January to March), Q2 refers to Quarter 2 (April to June), Q3 refers to Quarter 3 (July to September) and Q4 refers to Quarter 4 (October to December).

Download chart

[XLS](#) [XLS format](#)
(28.5 Kb)

Annual inflation

The aggregate Services Producer Price Index (SPPI) rose by 0.6% in the year to quarter 4 of 2015, up from an increase of 0.2% in the year to quarter 3 of 2015. Of the 10 sections (as defined by the 2007 Standard Industrial Classification) that are combined to form the aggregate SPPI, 8 showed price increases.

The main upward contributions to the annual rate of the aggregate SPPI came from professional, scientific and technical activities, which increased 1.2% in the year to quarter 4 of 2015 (up from an increase of 0.6% in the year to quarter 3 of 2015). Real estate activities, and transportation and storage also had notable contributions to the increase of the aggregate in the year to quarter 4 of 2015, increasing by 3.7% and 0.9%, respectively. These increases were partially offset by falls in the price of information and communication services, and water supply, sewerage and waste management services where prices fell by 0.8% and 9.4%, respectively in the year to quarter 4 of 2015 (Table B and Figure B).

Table B: Annual growth in SPPI (percentage change, latest quarter on corresponding quarter of previous year)

Quarter 4 (Oct to Dec) 2015, United Kingdom

Section	Annual percentage change
Water Supply, Sewerage & Waste Management	-9.4
Repair & Maintenance of Motor Vehicles	1.8
Transportation & Storage	0.9
Accommodation & Food	0.5
Information & Communication	-0.8
Real Estate Activities	3.7
Professional, Scientific & Technical Activities	1.2
Administrative & Support Services	0.4
Education	1.7
Other Services	2.2
Aggregate SPPI	0.6

Table source: Office for National Statistics

Table notes:

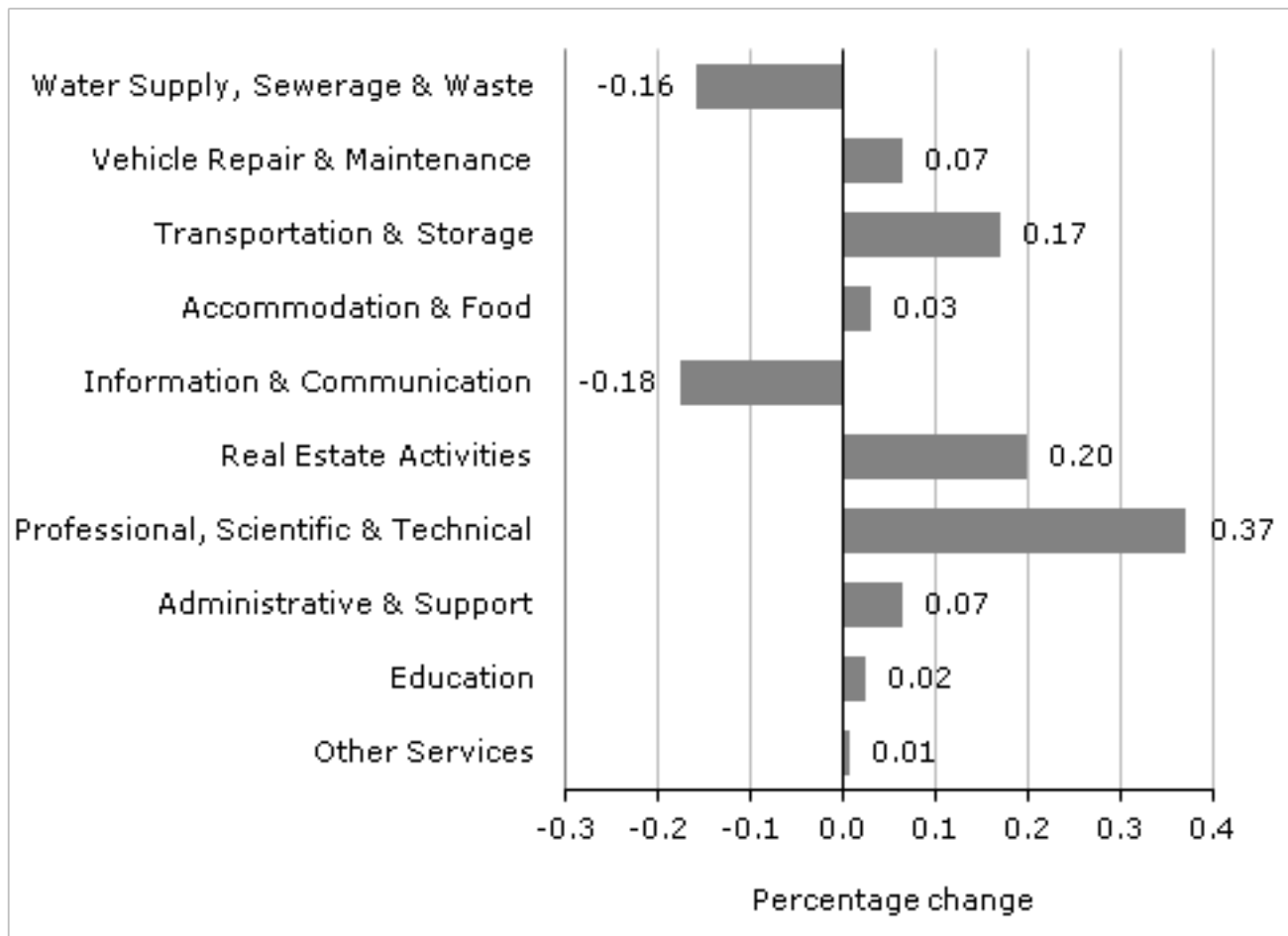
1. The section level SPPIs are an aggregate of individual industry level SPPIs (excluding financial intermediation) published in the SPPI Statistical Bulletin. They do not provide full coverage of the service sector.
2. Not all of the industry level SPPIs used to construct the section level SPPIs are National Statistics.

Download table

[XLS](#) [XLS format](#)
(25.5 Kb)

Figure B: Contribution to annual growth rate (0.6%)

Quarter 4 (Oct to Dec) 2015, United Kingdom



Source: Services Producer Price Index (SPPI) - Office for National Statistics

Notes:

1. The section level SPPIs are an aggregate of the individual industry level SPPIs (excluding Financial Intermediation) published in the SPPI Statistical Bulletin. They do not provide full coverage of the section listed.
2. Not all of the industry level SPPIs used to construct the section-level SPPIs are National Statistics.

Download chart

[XLS](#) [XLS format](#)
(25 Kb)

Price increases for professional, scientific and technical activities, real estate, and transport and storage activities, provided the main contributions to the rise in the aggregate SPPI in the year to quarter 4 of 2015.

Professional, scientific and technical activities prices increased by 1.2% in the year to quarter 4 of 2015. Prices rose in all indices within this section, but the largest contribution to the rise was seen in accountancy. Accountancy prices increased by 2.1% in the year to quarter 4 of 2015, compared with an increase of 2.5% in the year to quarter 3 of 2015. This rise is mainly a result of an increase in the prices of tax consultancy.

Real estate activities prices increased 3.7% in the year to quarter 4 of 2015. This increase was mainly due to real estate agency prices which increased by 7.3% in the year to quarter 4 of 2015, from an increase of 7.6% in the year to quarter 3 of 2015. This increase was due to a rise in the prices for office lettings, rest of UK (excluding London).

Transport and storage activities increased 0.9% in the year to quarter 4 of 2015. Increases in sea and coastal water freight and business airfares have been the main contributions to the increase. Sea and coastal water freight prices increased by 8.2% in the year to quarter 4 of 2015, compared to an increase of 10.1% in the year to quarter 3 of 2015, as a result of increases in coastal, European and global freight prices. Business airfare prices increased by 2.9%, from an increase of 4.7% in the year to quarter 3 of 2015. There has been an increase in prices for all fare types.

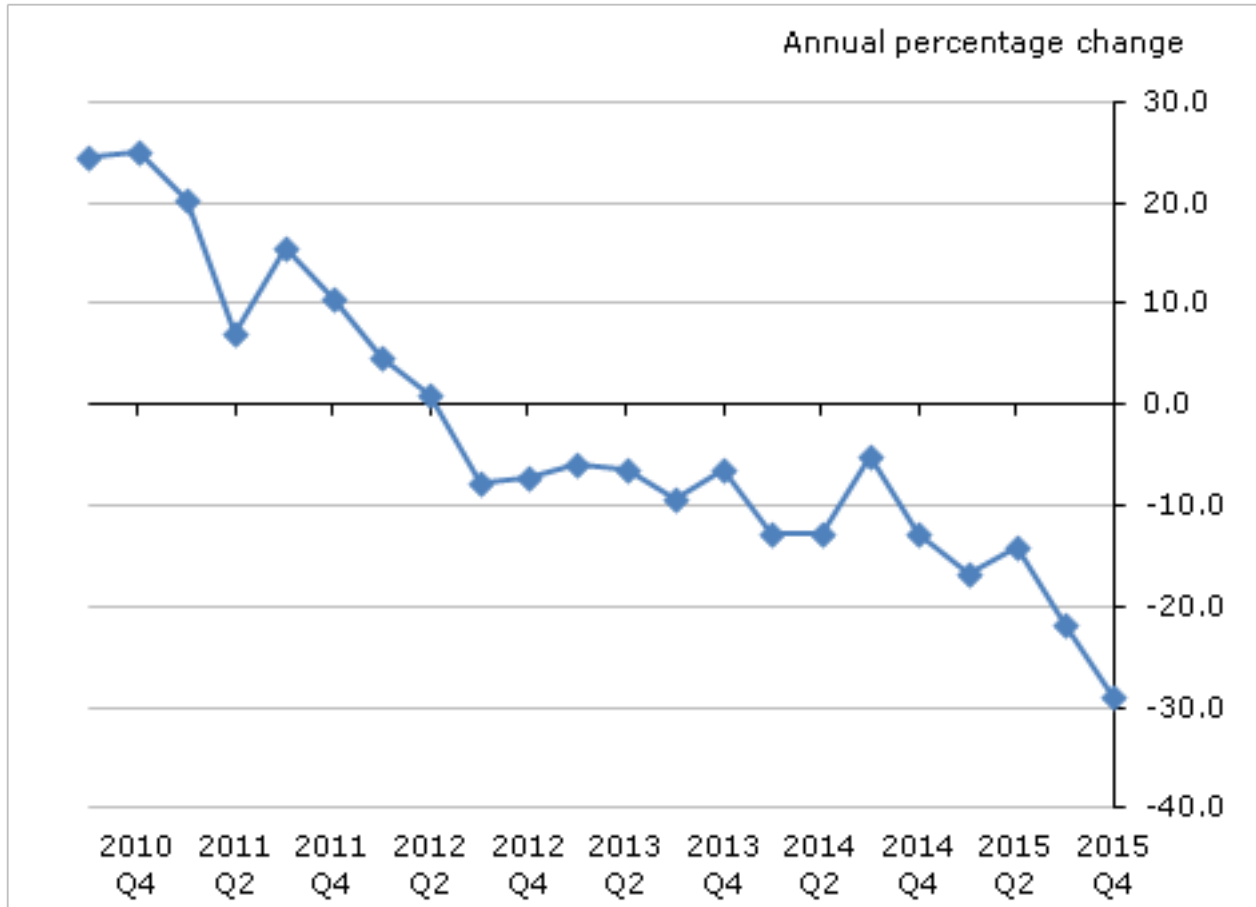
The increases seen in professional, scientific and technical activities, transportation and storage, and real estate activities were partially offset by falls in the prices charged for information and communication services, and water supply, sewerage and waste management services. Prices fell 0.8% and 9.4%, respectively in the year to quarter 4 of 2015, compared with decreases of 0.6% and 7.8% in the year to quarter 3 of 2015.

The fall seen in the prices for information and communication services was as a result of the decrease in prices for telecommunications, where prices fell 6.4% in the year to quarter 4 of 2015.

The decrease in the prices for water supply, sewerage and waste management services was a result of the fall in prices for sorted recovered materials services, where prices fell 28.9% in the year to quarter 4 of 2015. Metal prices have shown a downward trend since 2011, which may be linked to a reduction in demand from China. This reduced demand may have contributed to the fall in the price of metals, including the scrap metals that are processed by contributors to SPPI (Figure C).

Figure C: Service Producer Price Index for sorted recovered materials services

Quarter 4 (Oct to Dec) 2005 to Quarter 4 (Oct to Dec) 2015, United Kingdom



Source: Services Producer Price Index (SPPI) - Office for National Statistics

Notes:

1. Q1 refers to Quarter 1 (January to March), Q2 refers to Quarter 2 (April to June), Q3 refers to Quarter 3 (July to September) and Q4 refers to Quarter 4 (October to December).

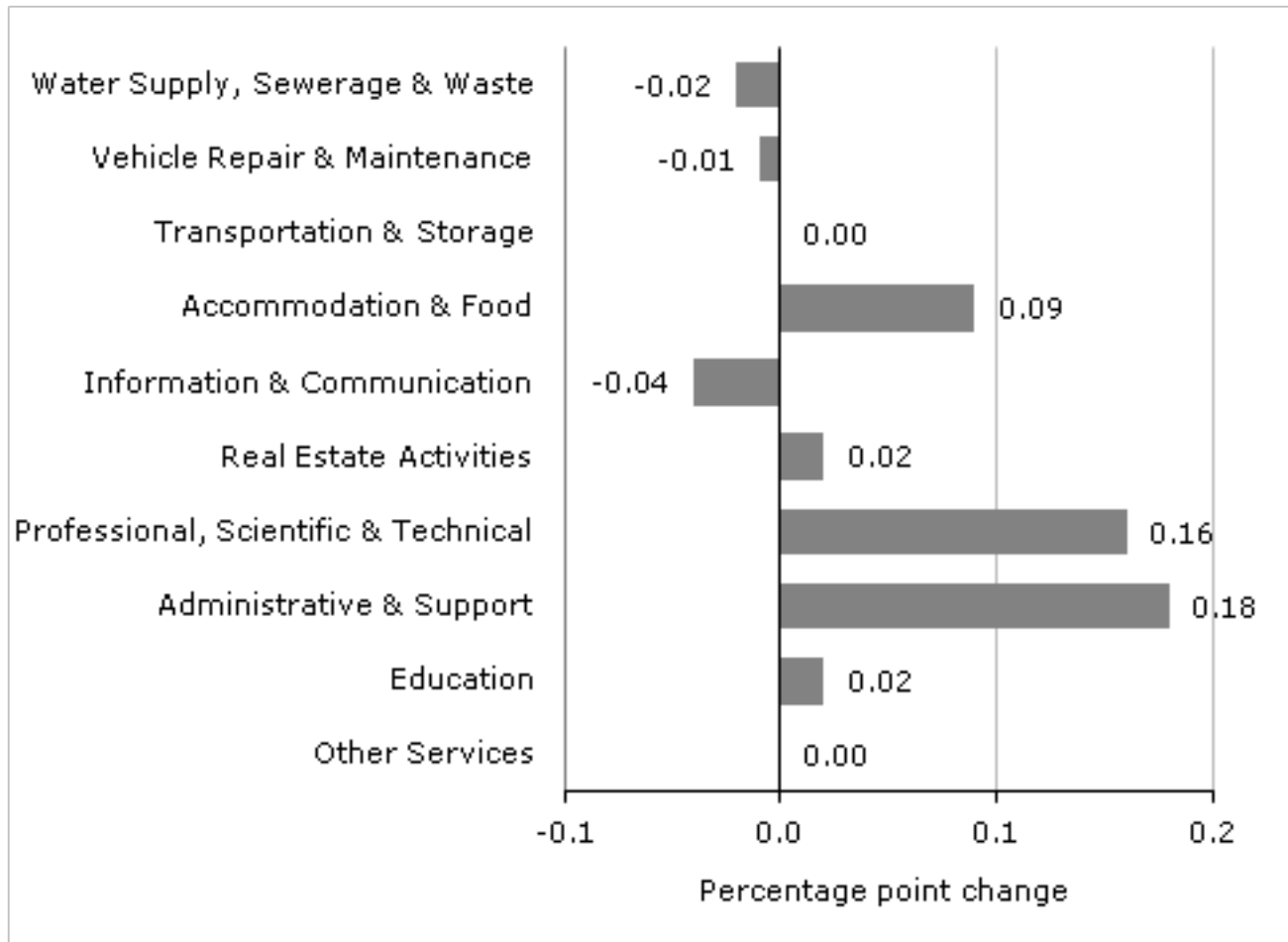
Download chart

[XLS](#) [XLS format](#)
(25.5 Kb)

The aggregate SPPI increased 0.6% in the year to quarter 4 of 2015, compared with an increase of 0.2% in the year to quarter 3 of 2015. Figure D shows how the SPPI sections have contributed towards this 0.4 percentage point change. The main contribution to the change came from increasing prices for professional, scientific and technical, and administrative and support services.

Figure D: Contribution to the change in the 12 month growth rate between quarters 3 (July to Sept) and quarter 4 (Oct to Dec) 2015 (0.4 percentage points)

United Kingdom



Source: Services Producer Price Index (SPPI) - Office for National Statistics

Notes:

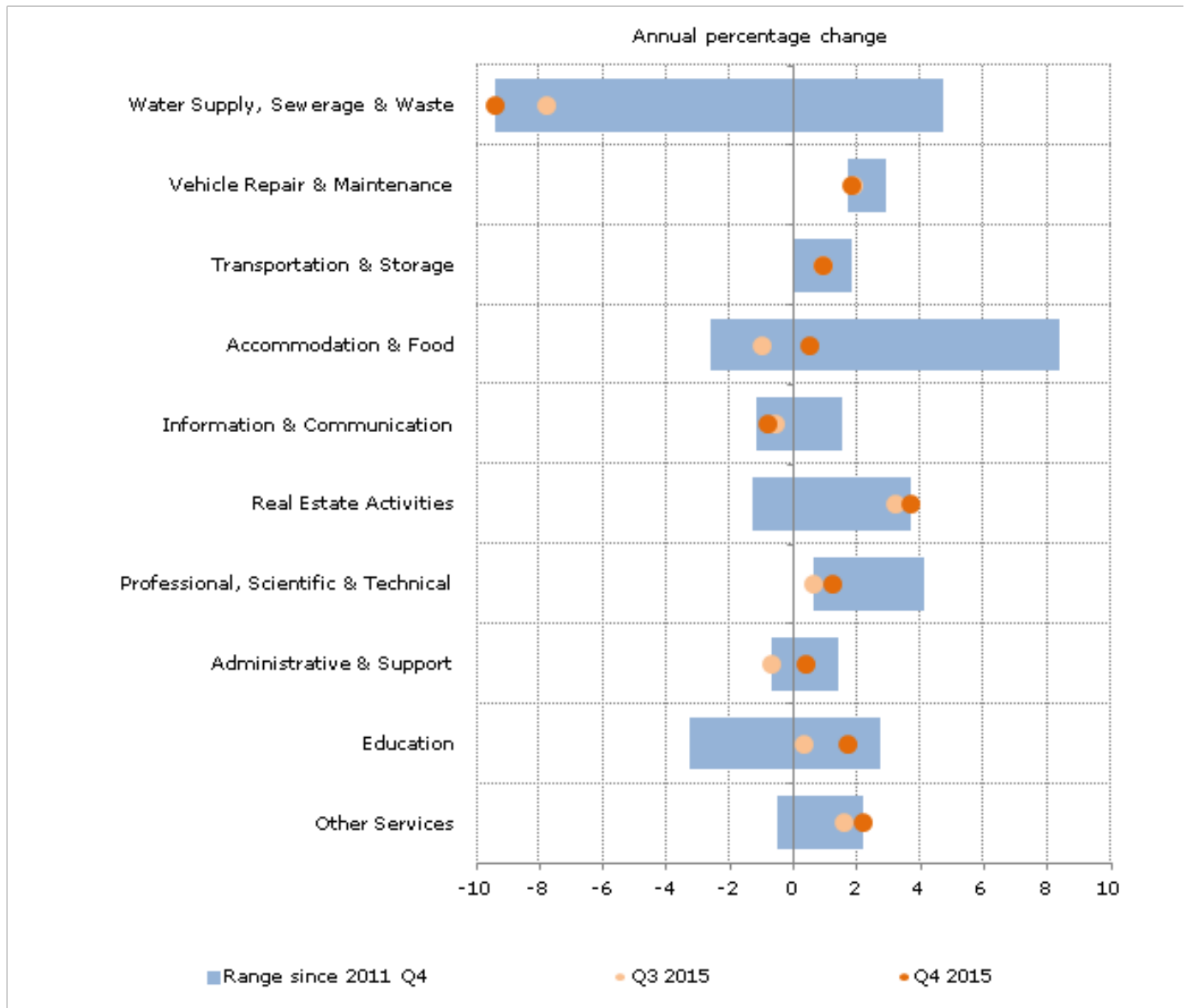
1. The section level SPPIs are an aggregate of the individual industry level SPPIs (excluding Financial Intermediation) published in the SPPI Statistical Bulletin. They do not provide full coverage of the section listed.
2. Not all of the industry level SPPIs used to construct the section-level SPPIs are National Statistics.
3. Q1 refers to Quarter 1 (January to March), Q2 refers to Quarter 2 (April to June), Q3 refers to Quarter 3 (July to September) and Q4 refers to Quarter 4 (October to December).

Download chart

[XLS](#) [XLS format](#)
(25.5 Kb)

Figure E : Services Producer Price Index by section

UK, Quarter 4 (Oct to Dec) 2011, Quarter 3 (July to Sept) 2015 and Quarter 4 (Oct to Dec) 2015



Source: Services Producer Price Index (SPPI) - Office for National Statistics

Notes:

1. Q1 refers to Quarter 1 (January to March), Q2 refers to Quarter 2 (April to June), Q3 refers to Quarter 3 (July to September) and Q4 refers to Quarter 4 (October to December).

Download chart

[XLS](#) [XLS format](#)
(22 Kb)

Examining inflation for each of the sections that contribute to the aggregate SPPI reveals a diverse set of trends. Figure E shows both the range of annual inflation rates experienced by each of the sections since quarter 4 of 2011 and the annual rates of inflation for the 2 most recent quarters. The

10 sections were split evenly between those which saw an increase in inflation relative to the last quarter and those which experienced a fall. There was a rise in the aggregate inflation rate over this period.

SPPI prices for water supply, sewerage and waste management currently stands at a 5-year low, this is the continuation of a downward trend; the inflation rate has fallen from 4.7% in quarter 4 of 2011 to -9.4% in the most recent quarter.

One notable difference between each section is the range of inflation rates that have been experienced since 2010. Education, accommodation and food, and water supply, sewerage, and waste management have experienced a relatively wide range of inflation rates over this period. Although all sections have experienced some variance in inflation, certain industries have experienced inflation consistently higher than others. Vehicle repair and maintenance has not experienced inflation lower than 1.7% at any point in the past 5 years, while administrative and support services, and information and communication have not experienced inflation higher than 1.4%.

Quarterly inflation

Prices received for the services included in the aggregate Services Producer Price Index (SPPI) rose 0.4% between quarters 3 and 4 of 2015, compared with no movement between quarters 2 and 3 of 2015. Of the 10 sections that make up the aggregate SPPI, 8 sections showed increases in prices between quarters 3 and 4 of 2015.

The largest increases in the quarterly rate came from real estate activities, and administrative and support services, which increased by 1.3% and 1.1%, respectively between quarters 3 and 4 of 2015. The remaining increases were small, ranging from 0.1% to 0.7% (Table C and Figure F).

Table C: Quarterly growth in SPPI (percentage change, latest quarter on previous quarter)

Quarter 4 (Oct to Dec) 2015, United Kingdom

Section	Quarterly percentage change
Water Supply, Sewerage & Waste Management	-3.3
Repair & Maintenance of Motor Vehicles	0.3
Transportation & Storage	0.2
Accommodation & Food	-0.5
Information & Communication	0.1
Real Estate Activities	1.3
Professional, Scientific & Technical Activities	0.5
Administrative & Support Services	1.1
Education	0.0
Other Services	0.7
Aggregate SPPI	0.4

Table source: Office for National Statistics**Table notes:**

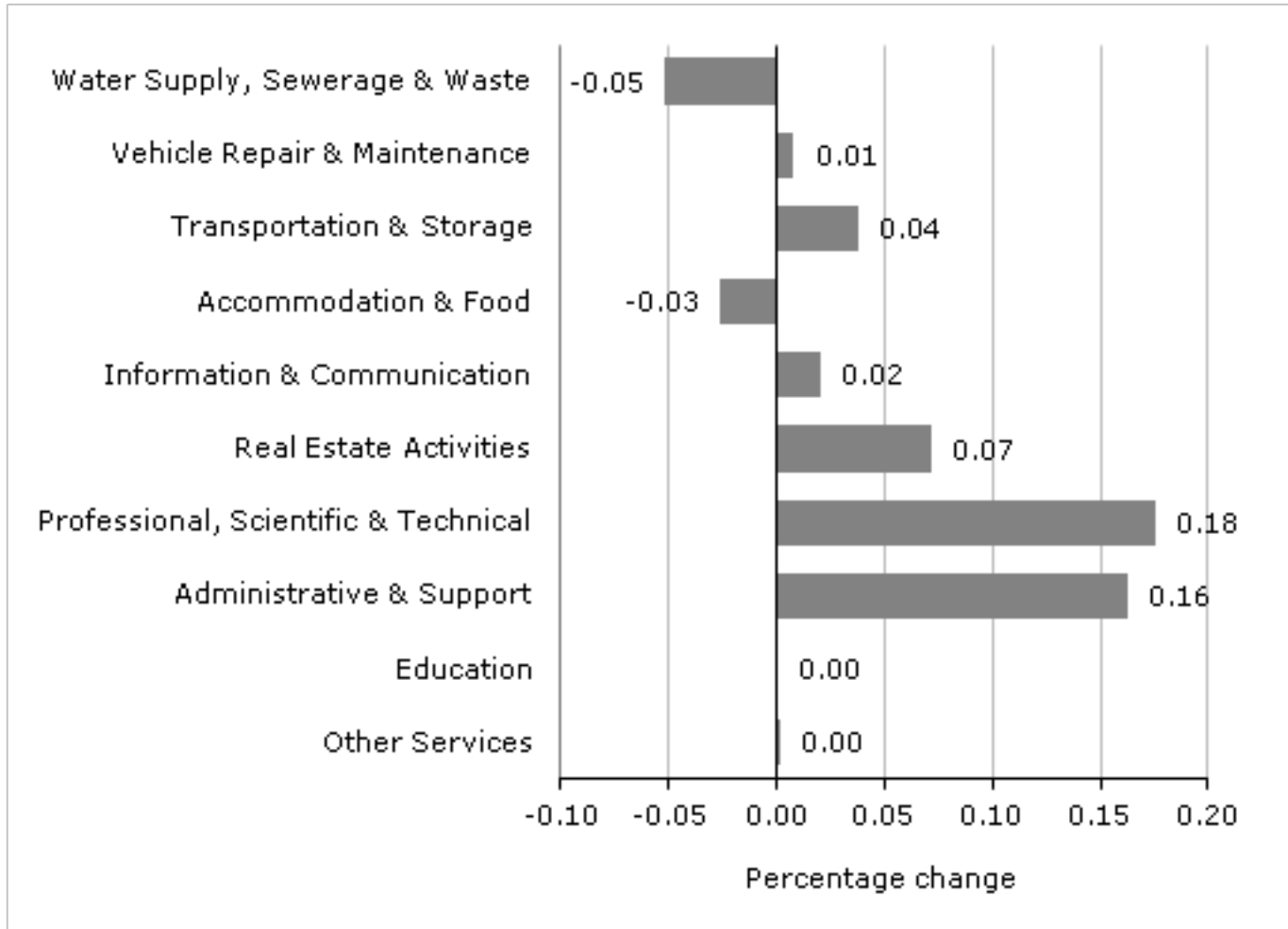
1. The section level SPPIs are an aggregate of individual industry level SPPIs (excluding financial intermediation) published in the SPPI Statistical Bulletin. They do not provide full coverage of the service sector.
2. Not all of the industry level SPPIs used to construct the section level SPPIs are National Statistics.

Download table

XLS [XLS format](#)
(25.5 Kb)

Figure F: Contribution to quarterly growth rate (0.4%)

Quarter 4 (Oct to Dec) 2011 to Quarter 4 (Oct to Dec) 2015, United Kingdom



Source: Services Producer Price Index (SPPI) - Office for National Statistics

Notes:

1. The section-level SPPIs are an aggregate of the individual industry-level SPPIs (excluding financial intermediation) published in the SPPI Statistical Bulletin. They do not provide full coverage of the section listed.

Download chart

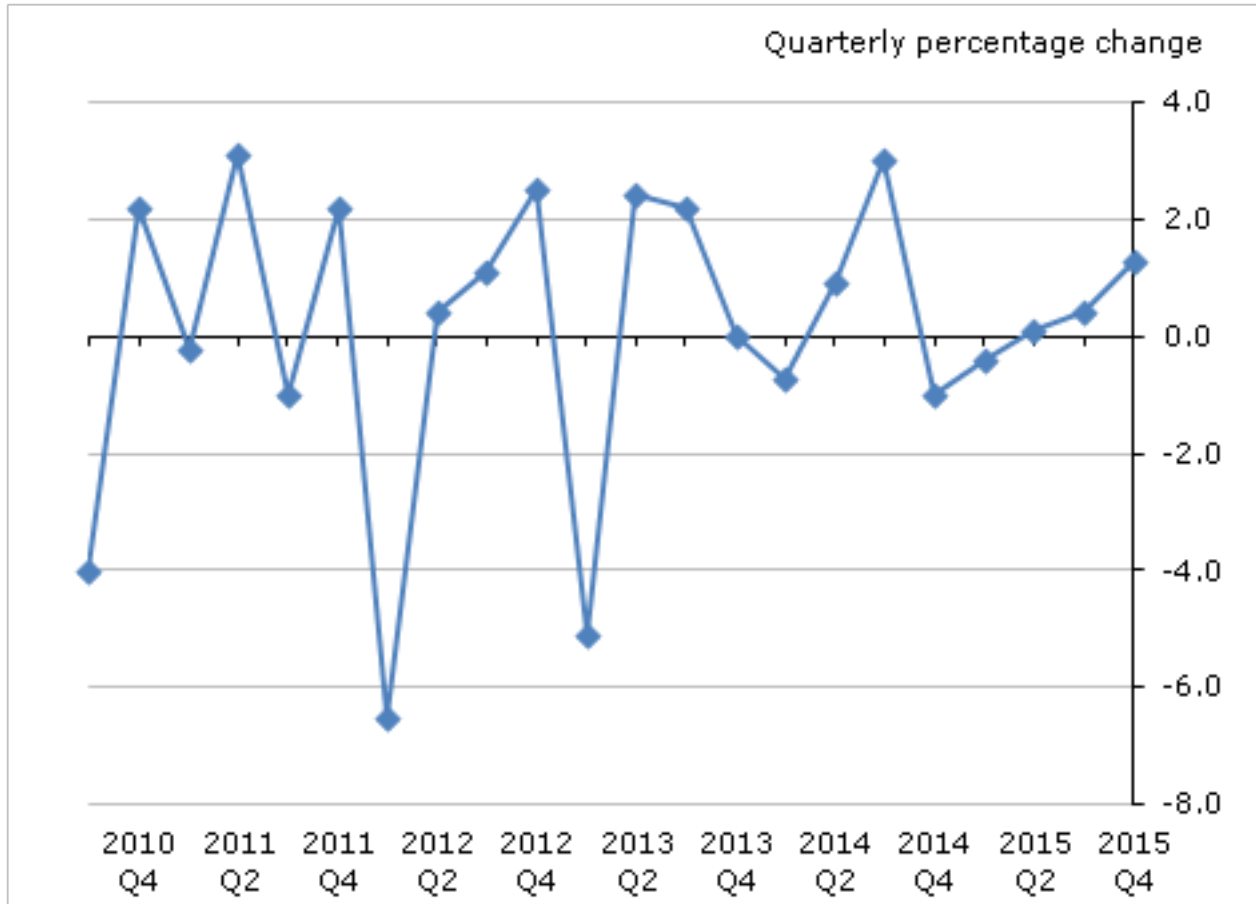
[XLS](#) [XLS format](#)

(19 Kb)

Professional, scientific and technical activities showed the largest contribution to the SPPI aggregate rate between quarters 3 and 4 of 2015 with prices rising by 0.5%, compared with a decrease of 0.2% between quarters 2 and 3 of 2015. The main contributions to this increase were from advertising services, accountancy, and business and management consultancy prices, which increased by 1.3%, 1.0% and 0.7%, respectively, between quarters 3 and 4 of 2015. The movement in advertising services is driven by media planning and buying services. Figure G shows quarterly index movements in advertising services between quarter 3 2010 and quarter 4 2015.

Figure G: Service Producer Price Index for advertising services

UK, Quarter 4 (Oct to Dec) 2010 to Quarter 4 (Oct to Dec) 2015



Source: Services Producer Price Index (SPPI) - Office for National Statistics

Notes:

1. Q1 refers to Quarter 1 (January to March), Q2 refers to Quarter 2 (April to June), Q3 refers to Quarter 3 (July to September) and Q4 refers to Quarter 4 (October to December).

Download chart

[XLS](#) [XLS format](#)
(26.5 Kb)

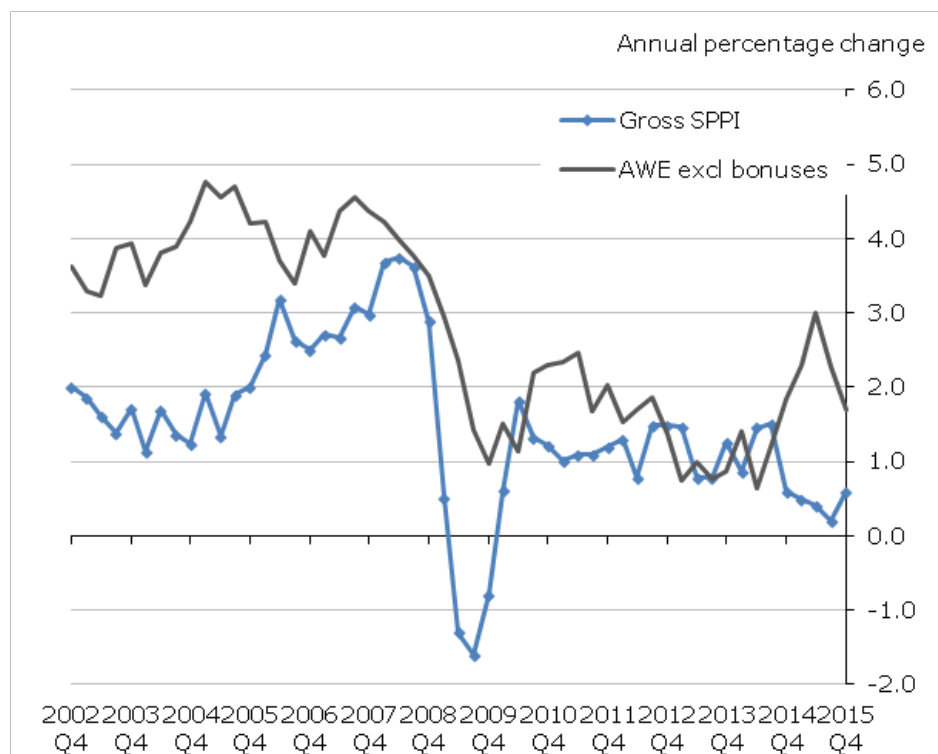
Economic context

Comparison with Average Weekly Earnings

The aggregate Services Producer Price Index (SPPI) captures changes in the prices received by UK business for the provision of a selection of services to other UK businesses and the public sector. For many services, the cost of manpower is the largest component of the price charged by businesses for providing the service, rather than the cost of goods or fuels. As a result, it is expected that the price charged for services should move in a similar way to the wages received by the UK workforce. Figure H shows a comparison of the annual percentage change of the fees received by

UK businesses for the provision of services, as estimated by the aggregate SPPI, with an indicator of salaries received by the UK workforce who are employed in the service sector, as estimated by the [Average Weekly Earnings \(AWE\)](#) "Services" pay index excluding bonuses.

Figure H: Services Producer Price Index and 'services' Average Weekly Earnings Index
 Quarter 4 (Oct to Dec) 2001 to Quarter 4 (Oct to Dec) 2015, United Kingdom



Source: Services Producer Price Index (SPPI) - Office for National Statistics

Notes:

1. The aggregate SPPI includes the water supply; sewerage and waste management sector not included in the AWE.
2. The AWE index includes financial and insurance activities, public administration and defence: compulsory social security, human health and social work activities and arts, entertainment & recreation sectors not included in the SPPI.
3. Q1 refers to Quarter 1 (January to March), Q2 refers to Quarter 2 (April to June), Q3 refers to Quarter 3 (July to September) and Q4 refers to Quarter 4 (October to December).

Download chart

[XLS](#) [XLS format](#)
 (29.5 Kb)

As would be expected, the annual percentage change for AWE services follows a similar pattern to the SPPI. From 2001 to late 2008, both the AWE for services and the aggregate SPPI show similar trends, although AWE growth was significantly stronger. During the economic downturn in 2008 to 2009, the rate of growth in both wages and service prices slowed dramatically. However, while prices received for services started to fall in 2009, wages continued to grow compared with a year earlier, albeit at a much lower rate. Since quarter 4 of 2010, both AWE and the aggregate SPPI

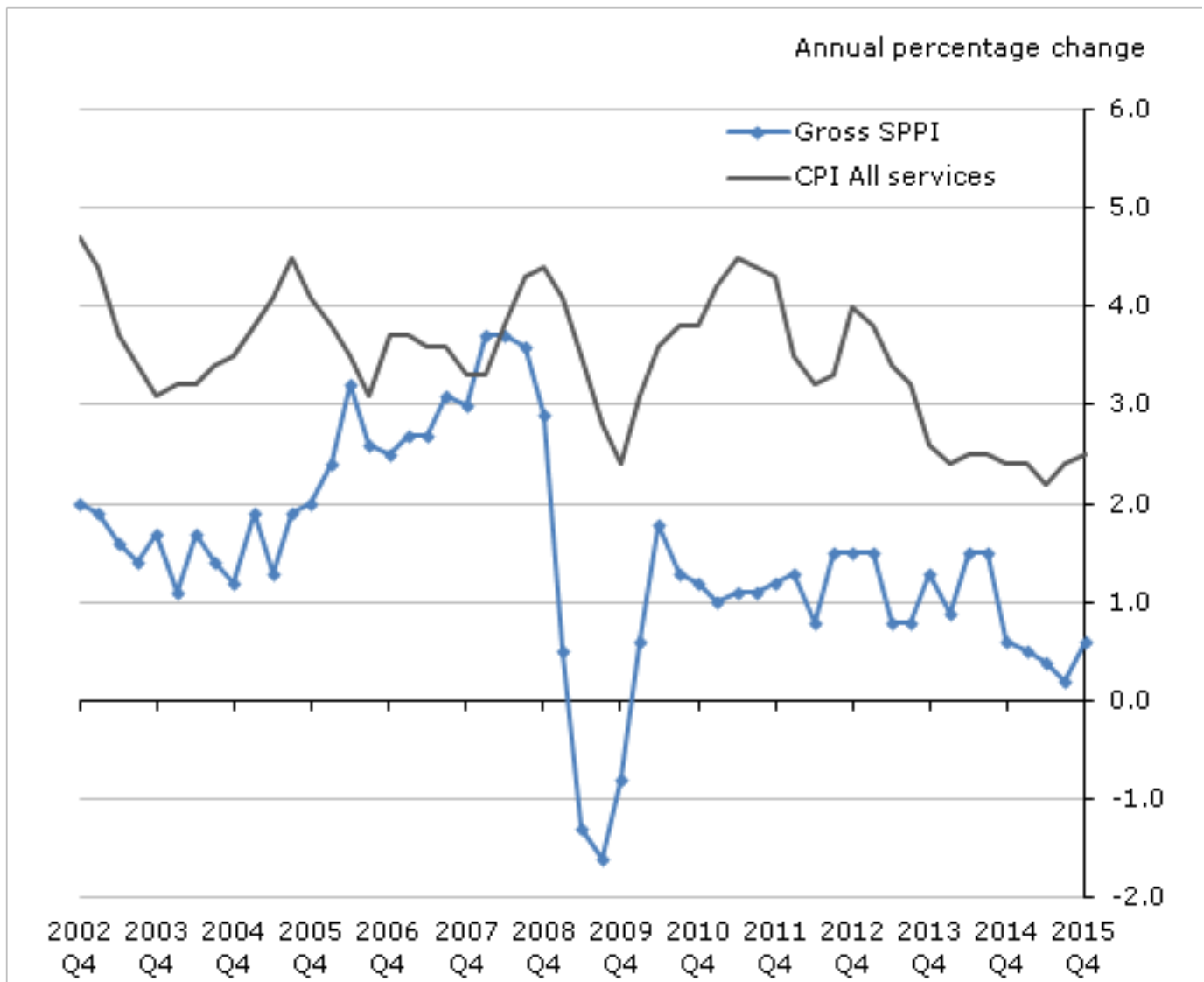
have shown lower growth than before the economic downturn. In the last 2 years the AWE services and SPPI indices have both shown growth of around 1%. However, in the last 4 quarters the AWE services index has shown stronger growth than SPPI. The rises in the AWE services index have been driven by a large increase in the retail and repair sector, which is not measured in the SPPI.

Comparison with Consumer Price Index

While the SPPI measures the amount received by a company for services they've provided to other businesses, the prices paid by households is estimated by the Consumer Price Index (CPI). While the costs associated with providing services to both businesses and households will be broadly similar, there may be different costs associated with providing services to different customers. Figure I shows a comparison with the "all services" sector of the [Consumer Price Index \(CPI\)](#) which measures the prices paid for services by households.

Figure I: Comparison of Services Producer Price Index and 'all services' Consumer Price Indices aggregate

Quarter 4 (Oct to Dec) 2002 to Quarter 4 (Oct to Dec) 2015, United Kingdom



Source: Services Producer Price Index (SPPI) - Office for National Statistics

Notes:

1. SPPI measures changes in the price received by a company, CPI measures changes in the price paid by a consumer. Therefore CPI figures may include taxes and fees that are not retained by the service provider.
2. SPPI measures the price received for services provided by UK based suppliers only, excluding imports from non-UK suppliers. CPI aims to measure the price paid by consumers in the UK, who may use non-UK based suppliers.
3. SPPI uses Standard Industrial Classification 2007 (SIC 07) to produce its aggregate, CPI uses Classification of Individual Consumption according to Purpose (COICOP), This means that the structure of each index may not always correlate at more detailed levels.
4. Q1 refers to Quarter 1 (January to March), Q2 refers to Quarter 2 (April to June), Q3 refers to Quarter 3 (July to September) and Q4 refers to Quarter 4 (October to December).

Download chart

[XLS](#) [XLS format](#)
(29.5 Kb)

Generally inflation in the CPI “all services” index runs at a higher rate than the SPPI. Between late 2005 and 2008 the gap between the SPPI and CPI annual rate of inflation narrowed before widening again from 2009 to present. During the economic downturn in 2008 to 2009, the annual rate of inflation for both indices decreased, with prices falling by as much as 1.6% for services sold by UK businesses, while the prices paid by households continued to grow, although at a much lower rate, reaching a low of 2.8% in quarter 1 of 2010. Since quarter 4 of 2010 both indices have shown growth however the SPPI has shown significantly lower growth than CPI.

Other measures of service sector inflation

There are other measures of service sector inflation available such as the Chartered Institute of Procurement and Supply (CIPS) purchasing managers’ index and the Confederation of British Industry (CBI) service sector survey. There are significant methodological differences between these surveys and SPPI; therefore direct comparisons cannot be made.

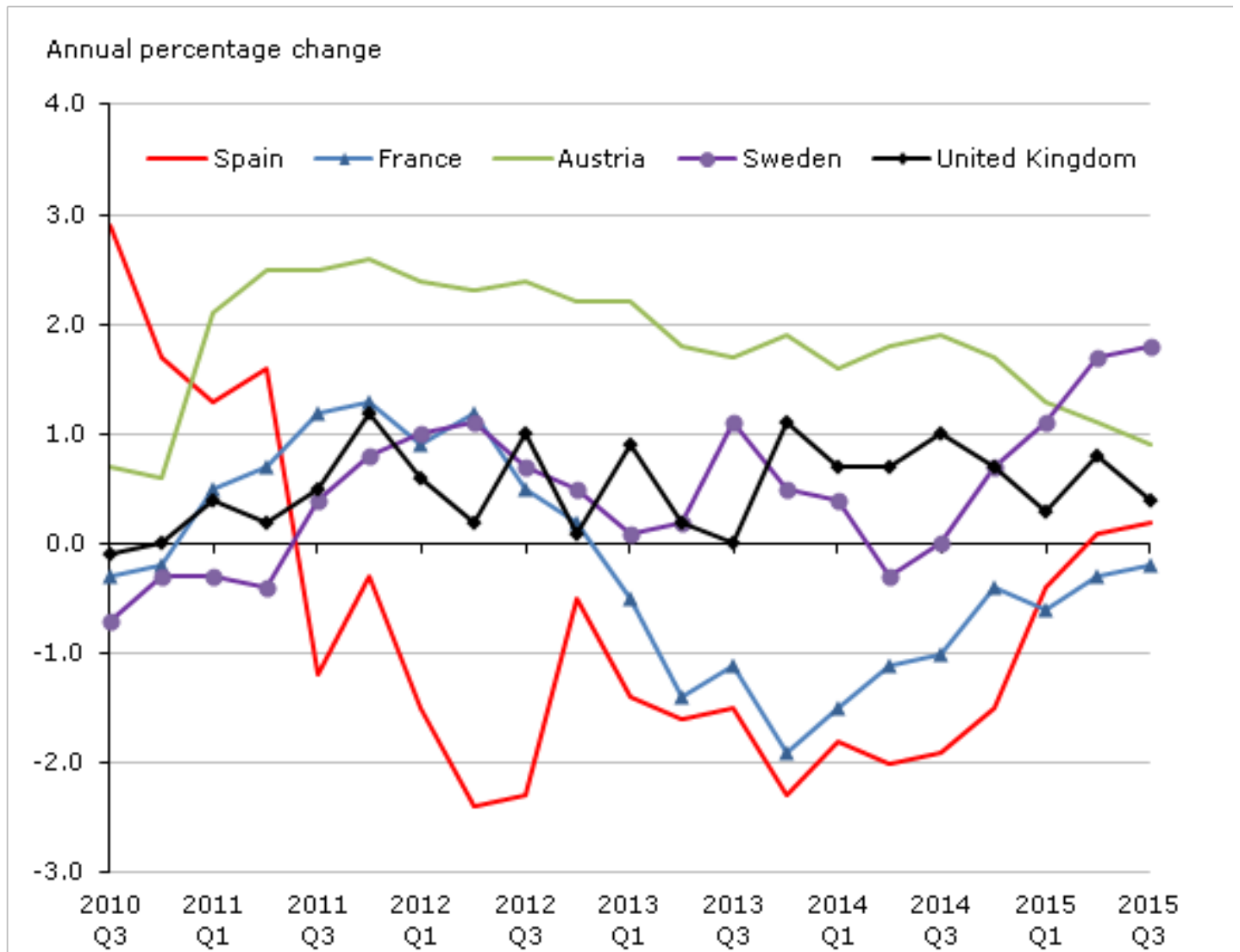
International comparison

All countries within the European Union are required to produce a measure of producer price inflation for the services sector under the Short Term Statistics Regulation. Figure J shows the growth rates of service producer prices for a selection of EU countries since quarter 3 of 2010.

The United Kingdom and Sweden recorded largely stable service producer price indices, growing by 0.5% and 2.5% respectively over the total period, whereas Austrian prices increased more rapidly. These experiences contrast with France, where SPPI inflation has been negative since quarter 1 of 2013.

Figure J: Services Producer Price Indices international comparison

Quarter 3 (Jul to Sep) 2010 to Quarter 3 (Jul to Sep) 2015, United Kingdom



Source: Office for National Statistics, Eurostat

Notes:

1. The UK growth in this chart does not match that published as the Aggregate Gross Sector SPPI. This is because the indices shown in this comparison only include sections G to N, as per the Standard Industrial Classification 2007 (SIC 07). The aggregate Gross Sector SPPI also includes industries classified to Sections E and G of SIC 07. A full list of all SIC codes included can be found in the SPPI Coverage document.
2. Q1 refers to Quarter 1 (January to March), Q2 refers to Quarter 2 (April to June), Q3 refers to Quarter 3 (July to September) and Q4 refers to Quarter 4 (October to December).

Download chart

[XLS](#) [XLS format](#)
(27.5 Kb)

However, in recent quarters the range of inflation rates experienced by these countries has narrowed, as the countries with the lowest inflation rates (France and Spain) saw an increase, and the country with the highest rate (Austria) saw a decrease in inflation, Austria's inflation rate was the lowest since 2010. Spain saw negative SPPI inflation from quarter 3 of 2011 and quarter 1 of 2015, however the last 2 quarters have seen positive SPPI inflation, with the Spanish inflation rate at the highest since 2011.

Net sector aggregate

At the aggregate level, both a net and gross sector Services Producer Price Index (SPPI) is produced. The prices used to construct both of these indices are the same, but different weights are used to construct the net sector index compared with the gross sector.

Summary of net sector movements

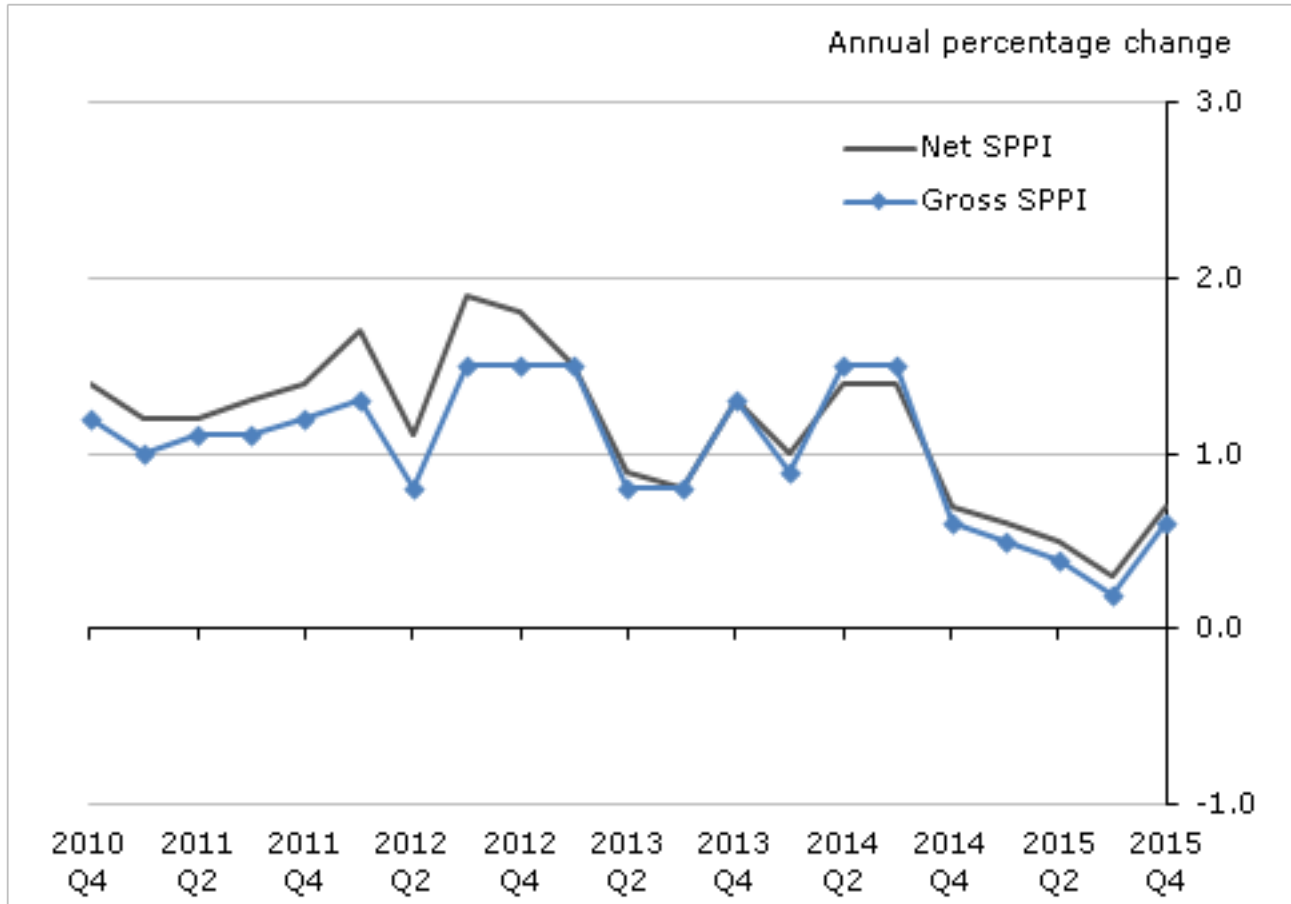
In quarter 4 of 2015, movements in the net sector aggregate SPPI were:

- annual inflation rose 0.7%, up from 0.3% in quarter 3 of 2015
- between quarters 3 and 4 of 2015, quarterly inflation stood at 0.4%, compared with no change between quarters 2 and 3 of 2015

Generally, the movements of the net sector aggregate SPPI are similar to those of the gross sector indices (Figure K).

Figure K: Aggregate Services Producer Price Index (net and gross sectors)

Quarter 4 (Oct to Dec) 2010 to Quarter 4 (Oct to Dec) 2015, United Kingdom



Source: Services Producer Price Index (SPPI) - Office for National Statistics

Notes:

1. The aggregate SPPIs is an aggregate of the individual industry-level SPPIs (excluding financial intermediation) published in the SPPI Statistical Bulletin. It does not provide full coverage of the service sector.
2. Not all of the industry level SPPIs used to construct the aggregate SPPI are National Statistics.
3. Q1 refers to Quarter 1 (January to March), Q2 refers to Quarter 2 (April to June), Q3 refers to Quarter 3 (July to September) and Q4 refers to Quarter 4 (October to December).

Download chart

[XLS](#) [XLS format](#)
(26.5 Kb)

Background notes

1. How are we doing?

We are constantly seeking to improve this release and welcome feedback from our users to help us achieve this. If you have any comments on the format, layout or content of this release

please let us know. We would also be interested in knowing how you use these data to inform your work. Please email us: sppi@ons.gsi.gov.uk.

2. Analysis of Service Producer Price Indices using standard errors

To help users quantify the uncertainty around the estimates of service sector inflation, we plan to calculate standard errors for SPPI. We will present the results of our analysis in an article published as soon as possible.

3. Coverage of SPPI

The SPPI is a measure of inflation for the UK service sector; however prices are not collected from Northern Ireland for any of the service industries which are collected as part of the quarterly survey. This is because the Statistics of Trade Act which makes the SPPI survey mandatory does not extend to Northern Ireland. The omission of prices from Northern Ireland means that the SPPI makes the assumption that prices received by companies in Northern Ireland change at the same rate as prices in the rest of the UK.

4. Re-assessment by the UK Statistics Authority

SPPI has recently undergone a routine re-assessment by the [UK Statistics Authority](#) against the [Code of Practice for Official Statistics](#). The final [SPPI assessment report](#) is now available.

5. Finding SPPI data

All of the data included in this statistical bulletin, alongside data for the full range of SPPIs, is available in the associated [Reference Table \(445.5 Kb Excel sheet\)](#) or can be downloaded from the [Time Series Dataset](#) for SPPI. Each SPPI has 2 unique identifiers: a 10-digit index number which relates to the [Standard Industrial Classification](#) code appropriate to the index, and a 4-character alpha-numeric code which can be used to find series when using the Time Series Dataset for SPPI. [SPPI records \(88.5 Kb Excel sheet\)](#) which show higher, lower or equal to movements, are also available to view or download.

6. Article about rebasing the PPI and SPPI onto 2010=100

As previously announced, we have been taking forward the rebasing of PPI and SPPI onto a 2010=100 basis. SPPI has been published on a 2010=100 basis, which was first released on 26 February 2014. A parallel run has been conducted to compare 2010=100 index values with 2005=100, analysing trends in the process. This parallel run will form an assessment of the impact of rebasing. An article [Services Producer Price Index Rebasing \(2010=100\)](#) describing the results of this assessment is published alongside this release. If you have any questions or queries regarding the impact of rebasing on SPPI data, please [contact SPPI](#).

7. Quality and methods

A [Quality and Methodology Information \(QMI\)](#) report is available for the SPPI which describes how the statistics presented in this statistical bulletin are produced and provides information on

the quality of the statistics. Detailed information on the methods used to compile the SPPI is available in the [SPPI Manual \(456.4 Kb Pdf\)](#).

8. Guidance for users

The SPPI is calculated on a “business to business” basis. This means that only transactions between UK businesses and other UK businesses or government are included. Sales made to customers outside of the UK or to members of the public are excluded.

Index numbers shown in this statistical bulletin are on a gross sector basis unless otherwise stated. This means that they include transactions between UK service sector businesses and all other UK businesses and government.

Indices relate to average prices per quarter. The full effect of a price change occurring within a quarter will only be reflected in the index for the following quarter. All index numbers exclude VAT and are not seasonally adjusted. Since SPPIs exclude VAT, they are not affected by the increase in the standard rate of VAT to 20% from 4 January 2011.

9. Definitions

Gross and net sector series

All figures presented in this statistical bulletin are calculated on a gross sector basis unless otherwise stated.

Gross sector output (GSO) series - calculated using weights based on sales to UK businesses and government from all transactions within the UK. This index reflects the “service sector” inflation experienced by all UK businesses.

Net sector output (NSO) series - calculated using weights based on sales to UK businesses and government outside of the service sector. For example, sales of legal services to a UK manufacturing company would be included, but sales to an accountancy company (another service provider) would be excluded. This index gives a measure of inflation that is specific to non-service sector businesses.

GSO weights - for most industries, sales from the Services Turnover Survey (STS) are used to determine their weight into the aggregate SPPI. Where STS data is unavailable, data from the Annual Business Survey is used as a proxy. In order to make the ABS data more comparable to the STS data, an adjustment factor is applied to remove sales attributed to non-service provision. These sales values are then used to calculate the industry weights.

NSO weights - net sector weights are calculated by taking the gross sector sales data and adjusting them to represent only sales to businesses outside the service sector. This adjustment is made using data from the National Accounts Supply and Use Tables. These tables allow for the calculation of a ratio for each industry that approximates the proportion of sales to non-service sector businesses. This ratio is applied to the gross sector sales to give an approximation of the net sector sales. The resulting calculated sales are then used to weight the industries into the net sector aggregate SPPI.

Reporting periods - Throughout this release quarter 1 refers to January to March, quarter 2 refers to April to June, quarter 3 refers to July to September and quarter 4 refers to October to December.

10. Data sources

The SPPI is compiled using the results of a mandatory survey carried out under the Statistics of Trade Act (1947). To keep the burden on respondents to a minimum, alternative data sources are used to compile the indices wherever possible. Currently 6 SPPIs are compiled using external data sources, these data sources are:

- property rental payments - Investment Property Databank (IPD)
- financial Intermediation (Banks) - Bank of England (BoE)

11. SPPI Coverage

We do not produce an SPPI for every industry in the service sector and so the aggregate SPPI is a partial, best estimate, of the overall inflation to UK businesses from the service sector. Similarly, the indices published at section level do not provide full coverage and are the best estimate that can be made of those particular service activities using the data available. As resources allow, we will continue to review the existing SPPIs and expand coverage through developing SPPIs for new industries. As such, the aggregate SPPI will change composition from time to time, but will always remain our best estimate of overall inflation to UK businesses from the service sector. The fact that coverage may change over time should be considered by users when deciding which indices best meet their needs.

12. Revisions

SPPI follows our policy for revisions and corrections and will show significant revisions, but suppress minor changes to avoid unnecessary inconvenience to users. Indices for the most recent 2 quarters are regarded as provisional and may be revised as later data become available.

For this statistical bulletin, [Reference Table 1R \(445.5 Kb Excel sheet\)](#) highlights revisions to movements in price indices previously published in last quarter's statistical bulletin.

13. European comparability

The UK is required to produce a number of the SPPIs included in this statistical bulletin under the [Short-Term Statistics Regulation](#). As a result, all EU countries must publish equivalent series on a comparable basis. Further information about SPPI at an EU level, and access to data for all EU countries is available on the [Eurostat website](#).

14. Publication policy

The complete run of data in the tables of this bulletin are also available to view and download in other electronic formats free of charge using our National Statistics [Datasets and Reference](#)

[Table service](#) (the data associated with this bulletin is available via the Download data link in this release). Users can download the complete release in a choice of zipped formats or view and download their own selections of individual series.

15. Following ONS

Follow us on [Twitter](#) and [Facebook](#).

National Statistics are produced to high professional standards set out in the Code of Practice for Official Statistics. They undergo regular quality assurance reviews to ensure that they meet customer needs. They are produced free from any political interference.

© Crown copyright 2015.

Next publication:

24 February 2016

Media contact:

Tel: Luke Croydon +44 (0)845 6041858

Emergency on-call +44 (0)7867 906553

Email: media.relations@ons.gsi.gov.uk

Statistical contact:

Tel: John Jeremy on +44 (0) 1633 455158

Email: sppi@ons.gsi.gov.uk

Business Prices Enquiries:

Tel +44 (0) 1633 455723 or +44 (0) 1633 456705

16. Details of the policy governing the release of new data are available by visiting www.statisticsauthority.gov.uk/assessment/code-of-practice/index.html or from the Media Relations Office email: media.relations@ons.gsi.gov.uk

These National Statistics are produced to high professional standards and released according to the arrangements approved by the UK Statistics Authority.

Copyright

© Crown copyright 2016

You may use or re-use this information (not including logos) free of charge in any format or medium, under the terms of the Open Government Licence. To view this licence, visit www.nationalarchives.gov.uk/doc/open-government-licence/ or write to the Information Policy Team, The National Archives, Kew, London TW9 4DU, or email: psi@nationalarchives.gsi.gov.uk.

This document is also available on our website at www.ons.gov.uk.

Statistical contacts

Name	Phone	Department	Email
John Jeremy	+44 (0)1633 455158	Business Prices	sppi@ons.gsi.gov.uk

Next Publication Date:

25 May 2016

Issuing Body:

Office for National Statistics

Media Contact Details:

Telephone: 0845 604 1858
(8.30am-5.30pm Weekdays)

Emergency out of hours (limited service): 07867 906553

Email:

media.relations@ons.gsi.gov.uk

1 Services Producer Price Indices - Aggregate

2010=100 (SIC2007)

	Gross Sector ^{1,2,4}			Net Sector ^{1,3,4}		
	SPPI - All services			SPPI - All services		
	Index (2010=100)	percentage change over		Index (2010=100)	percentage change over	
		Quarter	Year		Quarter	Year
	9907010000			9907020000		
	K8ZU			K8ZW		
2012 Q1	101.8	0.4	1.3	102.3	0.7	1.7
Q2	102.3	0.5	0.8	102.8	0.5	1.1
Q3	102.5	0.2	1.5	103.1	0.3	1.9
Q4	102.9	0.4	1.5	103.4	0.3	1.8
2013 Q1	103.3	0.4	1.5	103.8	0.4	1.5
Q2	103.1	-0.2	0.8	103.7	-0.1	0.9
Q3	103.3	0.2	0.8	103.9	0.2	0.8
Q4	104.2	0.9	1.3	104.7	0.8	1.3
2014 Q1	104.2	-	0.9	104.8	0.1	1.0
Q2	104.6	0.4	1.5	105.2	0.4	1.4
Q3	104.8	0.2	1.5	105.4	0.2	1.4
Q4	104.8r	-	0.6	105.4r	-	0.7
2015 Q1	104.7r	-0.1	0.5	105.4r	-	0.6
Q2	105.0	0.3	0.4	105.7	0.3	0.5
Q3	105.0p	-	0.2	105.7p	-	0.3
Q4	105.4p	0.4	0.6	106.1p	0.4	0.7

p = provisional. r = revised

Source: Office for National Statistics

1 The aggregate SPPI is an aggregate of the individual industry level SPPIs (excluding Financial Intermediation). It does not provide full coverage of the service sector.

2 The Gross Sector series is calculated using weights based on sales from all transactions in the UK to UK businesses and government.

3 The Net Sector series is calculated using weights based on sales to UK businesses and government who are not part of the service sector.

4 Not all of the industry-level SPPIs used to construct the aggregate SPPI are National Statistics.

2 Services Producer Price Indices - Section 1,2

2010=100 (SIC2007)

	Water Supply, Sewerage and Waste Management			Wholesale, Retail Trade; Repair of Motor Vehicles and Motorcycles		
	Index (2010=100)	percentage change over		Index (2010=100)	percentage change over	
		Quarter	Year		Quarter	Year
	9907101000			9907103000		
	MF8N			MF2J		
2012 Q1	107.0	0.9	3.6	105.9	0.3	1.8
Q2	108.2	1.1	2.1	106.8	0.8	2.1
Q3	106.2	-1.8	-0.7	107.3	0.5	1.7
Q4	105.6	-0.6	-0.4	107.5	0.2	1.8
2013 Q1	107.2	1.5	0.2	108.5	0.9	2.5
Q2	108.6	1.3	0.4	109.3	0.7	2.3
Q3	105.5	-2.9	-0.7	109.6	0.3	2.1
Q4	105.7	0.2	0.1	110.5	0.8	2.8
2014 Q1	105.3	-0.4	-1.8	111.9	1.3	3.1
Q2	106.4	1.0	-2.0	112.1	0.2	2.6
Q3	105.3	-1.0	-0.2	112.6	0.4	2.7
Q4	103.6	-1.6	-2.0	113.0	0.4	2.3
2015 Q1	98.8	-4.6	-6.2	113.8	0.7	1.7
Q2	99.3	0.5	-6.7	114.4	0.5	2.1
Q3	97.1p	-2.2	-7.8	114.7p	0.3	1.9
Q4	93.9p	-3.3	-9.4	115.0p	0.3	1.8

	Transportation and Storage			Accommodation and Food		
	Index (2010=100)	percentage change over		Index (2010=100)	percentage change over	
		Quarter	Year		Quarter	Year
	9907104000			9907105000		
	MF2K			MF2L		
2012 Q1	102.4	0.1	0.6	99.9	-1.9	0.8
Q2	102.9	0.5	-	101.7	1.8	0.2
Q3	102.7	-0.2	0.8	100.4	-1.3	-1.4
Q4	103.0	0.3	0.7	108.6	8.2	6.7
2013 Q1	104.0	1.0	1.6	105.9	-2.5	6.0
Q2	103.6	-0.4	0.7	102.4	-3.3	0.7
Q3	104.1	0.5	1.4	105.1	2.6	4.7
Q4	103.8	-0.3	0.8	111.5	6.1	2.7
2014 Q1	104.8	1.0	0.8	103.7	-7.0	-2.1
Q2	105.4	0.6	1.7	111.0	7.0	8.4
Q3	105.5	0.1	1.3	110.7	-0.3	5.3
Q4	105.7	0.2	1.8	108.6	-1.9	-2.6
2015 Q1	106.2	0.5	1.3	107.3r	-1.2	3.5
Q2	106.3	0.1	0.9	109.7	2.2	-1.2
Q3	106.4p	0.1	0.9	109.6p	-0.1	-1.0
Q4	106.6p	0.2	0.9	109.1p	-0.5	0.5

p = provisional. r = revised

Source: Office for National Statistics

1 The section-level SPPIs are an aggregate of individual industry-level SPPIs (excluding Financial Intermediation). They do not provide full coverage of the section listed.

2 Not all of the industry-level SPPIs used to construct the section-level SPPIs are National Statistics.

2 Services Producer Price Indices - Section 1,2

continued

2010=100 (SIC2007)

	Information and Communication			Real Estate Activities		
	Index (2010=100)	percentage change over		Index (2010=100)	percentage change over	
		Quarter	Year		Quarter	Year
	9907106000			9907108000		
	MF2M			MF8P		
2012 Q1	98.2	-0.8	-1.2	100.5	-0.1	-0.2
Q2	98.3	0.1	-0.9	100.4	-0.1	-0.2
Q3	98.7	0.4	0.2	100.7	0.3	-
Q4	98.3	-0.4	-0.7	100.4	-0.3	-0.2
2013 Q1	99.0	0.7	0.8	99.8	-0.6	-0.7
Q2	98.5	-0.5	0.2	100.2	0.4	-0.2
Q3	98.3	-0.2	-0.4	99.4	-0.8	-1.3
Q4	99.8	1.5	1.5	99.9	0.5	-0.5
2014 Q1	98.7	-1.1	-0.3	100.6	0.7	0.8
Q2	97.9	-0.8	-0.6	101.4	0.8	1.2
Q3	99.0	1.1	0.7	102.5	1.1	3.1
Q4	99.3r	0.3	-0.5	103.4	0.9	3.5
2015 Q1	97.7r	-1.6	-1.0	104.0r	0.6	3.4
Q2	97.9	0.2	-	104.8	0.8	3.4
Q3	98.4p	0.5	-0.6	105.8p	1.0	3.2
Q4	98.5p	0.1	-0.8	107.2p	1.3	3.7

	Professional, Scientific and Technical Activities			Administrative and Support Services		
	Index (2010=100)	percentage change over		Index (2010=100)	percentage change over	
		Quarter	Year		Quarter	Year
	9907109000			9907110000		
	MF8Q			MF8R		
2012 Q1	104.9	2.2	4.7	100.4	0.1	0.4
Q2	105.4	0.5	3.0	100.7	0.3	0.5
Q3	106.0	0.6	4.5	101.6	0.9	0.9
Q4	106.0	-	3.3	101.7	0.1	1.4
2013 Q1	106.4	0.4	1.4	101.8	0.1	1.4
Q2	106.9	0.5	1.4	101.3	-0.5	0.6
Q3	107.2	0.3	1.1	101.3	-	-0.3
Q4	107.5	0.3	1.4	102.5	1.2	0.8
2014 Q1	108.5	0.9	2.0	102.6	0.1	0.8
Q2	108.6	0.1	1.6	102.7	0.1	1.4
Q3	108.8	0.2	1.5	102.0	-0.7	0.7
Q4	108.8	-	1.2	102.0	-	-0.5
2015 Q1	109.4r	0.6	0.8	102.0	-	-0.6
Q2	109.7	0.3	1.0	102.2	0.2	-0.5
Q3	109.5p	-0.2	0.6	101.3p	-0.9	-0.7
Q4	110.1p	0.5	1.2	102.4p	1.1	0.4

p = provisional. r = revised

Source: Office for National Statistics

1 The section-level SPPIs are an aggregate of individual industry-level SPPIs (excluding Financial Intermediation). They do not provide full coverage of the section listed.

2 Not all of the industry-level SPPIs used to construct the section-level SPPIs are National Statistics.

2 Services Producer Price Indices - Section 1,2

continued

2010=100 (SIC2007)

	Education			Other Services		
	Index (2010=100)	percentage change over		Index (2010=100)	percentage change over	
		Quarter	Year		Quarter	Year
	9907113000			9907116000		
	MF8S			MF8T		
2012 Q1	100.2	1.1	-2.0	101.5	0.4	0.8
Q2	100.4	0.2	-3.3	101.7	0.2	0.7
Q3	100.0	-0.4	1.2	100.6	-1.1	-0.5
Q4	100.0	-	0.9	100.6	-	-0.5
2013 Q1	101.9	1.9	1.7	101.5	0.9	-
Q2	101.9	-	1.5	101.7	0.2	-
Q3	102.7	0.8	2.7	102.1	0.4	1.5
Q4	102.7	-	2.7	102.1	-	1.5
2014 Q1	104.1	1.4	2.2	102.1	-	0.6
Q2	104.2	0.1	2.3	102.8	0.7	1.1
Q3	104.2	-	1.5	102.8	-	0.7
Q4	102.8	-1.3	0.1	102.8	-	0.7
2015 Q1	103.2	0.4	-0.9	104.0	1.2	1.9
Q2	103.4	0.2	-0.8	104.3	0.3	1.5
Q3	104.5p	1.1	0.3	104.4p	0.1	1.6
Q4	104.5p	-	1.7	105.1p	0.7	2.2

p = provisional. r = revised

Source: Office for National Statistics

1 The section-level SPPIs are an aggregate of individual industry-level SPPIs (excluding Financial intermediation). They do not provide full coverage of the section listed.

2 Not all of the industry-level SPPIs used to construct the section-level SPPIs are National Statistics.

3 Services Producer Price Indices - Industry

2010 = 100 (SIC2007)

	Water Supply, Sewerage and Waste Management			Wholesale, Retail Trade; Repair of Motor Vehicles and Motorcycles
	Sewerage Services ¹ 37.00	Waste Disposal 38.11	Sorted Recovered Materials Services 38.32	Motor Vehicles 45.20
Annual				
	K8PX	K8Q3	K8QL	K8QW
2012	116.7	103.9	110.5	106.9
2013	121.0	106.8	102.7	109.5
2014	124.8	108.6	91.4	112.4
2015	123.6	104.5	73.0	114.5
Percentage change, latest year on previous year				
2012	8.2	2.0	-2.3	1.9
2013	3.7	2.8	-7.1	2.4
2014	3.1	1.7	-11.0	2.6
2015	-1.0	-3.8	-20.1	1.9
Quarterly results (not seasonally adjusted)				
2012 Q1	110.8	102.8	115.8B	105.9
Q2	118.7	104.0	114.6B	106.8
Q3	118.7	104.3	107.0B	107.3
Q4	118.7	104.4	104.6B	107.5
2013 Q1	118.7	105.1	108.8B	108.5
Q2	121.7	107.6	107.2B	109.3
Q3	121.7	107.2	96.9B	109.6
Q4	121.7	107.1	97.8B	110.5
2014 Q1	121.7	107.9	94.8B	111.9
Q2	125.9	109.5	93.5B	112.1
Q3	125.9	108.5	92.1B	112.6
Q4	125.9	108.6	85.4B	113.0
2015 Q1	125.9	104.0	79.0B	113.8
Q2	122.8	104.6	80.2B	114.4
Q3	122.8p	104.8p	72.0pB	114.7p
Q4	122.8p	104.6p	60.7pB	115.0p
Percentage change, latest quarter on previous quarter				
2012 Q1	-	0.4	2.8	0.3
Q2	7.1	1.2	-1.0	0.8
Q3	-	0.3	-6.6	0.5
Q4	-	0.1	-2.2	0.2
2013 Q1	-	0.7	4.0	0.9
Q2	2.5	2.4	-1.5	0.7
Q3	-	-0.4	-9.6	0.3
Q4	-	-0.1	0.9	0.8
2014 Q1	-	0.7	-3.1	1.3
Q2	3.5	1.5	-1.4	0.2
Q3	-	-0.9	-1.5	0.4
Q4	-	0.1	-7.3	0.4
2015 Q1	-	-4.2	-7.5	0.7
Q2	-2.5	0.6	1.5	0.5
Q3	-	0.2	-10.2	0.3
Q4	-	-0.2	-15.7	0.3
Percentage change, latest quarter on corresponding quarter of previous year				
2012 Q1	11.7	2.2	4.7	1.8
Q2	7.1	1.9	1.1	2.1
Q3	7.1	1.8	-7.7	1.7
Q4	7.1	2.0	-7.2	1.8
2013 Q1	7.1	2.2	-6.0	2.5
Q2	2.5	3.5	-6.5	2.3
Q3	2.5	2.8	-9.4	2.1
Q4	2.5	2.6	-6.5	2.8
2014 Q1	2.5	2.7	-12.9	3.1
Q2	3.5	1.8	-12.8	2.6
Q3	3.5	1.2	-5.0	2.7
Q4	3.5	1.4	-12.7	2.3
2015 Q1	3.5	-3.6	-16.7	1.7
Q2	-2.5	-4.5	-14.2	2.1
Q3	-2.5	-3.4	-21.8	1.9
Q4	-2.5	-3.7	-28.9	1.8

p = provisional. r = revised

B = values are considered less reliable due to lack of market coverage

Source: Office for National Statistics

1 Please see Background Note 10 for external sources.

3 Services Producer Price Indices - Industry

continued

2010 = 100 (SIC2007)

	Transportation and Storage					
	Business Rail Fares ¹ 49.11	Rail Freight 49.21	Bus & Coach Hire 49.39	Freight Transport by Road 49.41	Commercial Vehicle Ferries 50.11	Sea & Coastal Water Freight 50.20
Annual						
	K8QY	K8R2	K8RE	K8RO	K8RW	K8S5
2012	110.1	103.6	103.5	104.4	102.2	104.0
2013	114.9	105.4	104.6	104.5	102.8	100.1
2014	118.0	106.0	106.8	104.8	116.8	103.6
2015	120.6	105.1	109.4	104.8	116.8	110.2
Percentage change, latest year on previous year						
2012	3.9	1.2	2.0	1.2	–	–4.2
2013	4.4	1.7	1.1	0.1	0.6	–3.8
2014	2.7	0.6	2.1	0.3	13.6	3.5
2015	2.2	–0.8	2.4	–	–	6.4
Quarterly results (not seasonally adjusted)						
2012 Q1	110.1	104.1	102.9	104.4	102.6	106.5
Q2	110.1	103.5	103.6	104.3	102.7	105.8
Q3	110.1	102.8	103.7	104.5	101.5	103.6
Q4	110.1	104.0	104.0	104.6	101.8	100.3
2013 Q1	114.9	105.3F	103.7	104.8	102.9	98.2
Q2	114.9	105.6F	104.2	104.9	103.0	99.2
Q3	114.9	104.9F	104.3	104.3	102.9	101.7
Q4	114.9	106.0F	106.3	104.2	102.5	101.4
2014 Q1	118.0	105.1F	106.5	104.5	118.0	101.4
Q2	118.0	106.6F	106.7	104.8	117.6	103.9
Q3	118.0	106.5F	106.6	104.9	116.4	103.6
Q4	118.0	105.9F	107.5	104.8	115.3	105.5
2015 Q1	120.6	104.8F	109.2	104.8	116.6	102.9
Q2	120.6	105.5F	109.4	104.7	116.4	109.9
Q3	120.6p	105.4pF	109.5p	104.7p	116.6p	114.1p
Q4	120.6p	104.8pF	109.6p	104.9p	117.7p	114.1p
Percentage change, latest quarter on previous quarter						
2012 Q1	3.9	0.5	0.9	0.6	0.9	–3.6
Q2	–	–0.6	0.7	–0.1	0.1	–0.7
Q3	–	–0.7	0.1	0.2	–1.2	–2.1
Q4	–	1.2	0.3	0.1	0.3	–3.2
2013 Q1	4.4	1.3	–0.3	0.2	1.1	–2.1
Q2	–	0.3	0.5	0.1	0.1	1.0
Q3	–	–0.7	0.1	–0.6	–0.1	2.5
Q4	–	1.0	1.9	–0.1	–0.4	–0.3
2014 Q1	2.7	–0.8	0.2	0.3	15.1	–
Q2	–	1.4	0.2	0.3	–0.3	2.5
Q3	–	–0.1	–0.1	0.1	–1.0	–0.3
Q4	–	–0.6	0.8	–0.1	–0.9	1.8
2015 Q1	2.2	–1.0	1.6	–	1.1	–2.5
Q2	–	0.7	0.2	–0.1	–0.2	6.8
Q3	–	–0.1	0.1	–	0.2	3.8
Q4	–	–0.6	0.1	0.2	0.9	–
Percentage change, latest quarter on corresponding quarter of previous year						
2012 Q1	3.9	4.2	2.5	2.3	1.0	–0.4
Q2	3.9	0.4	2.0	1.1	–0.1	–2.6
Q3	3.9	–0.4	1.9	0.9	–1.3	–4.4
Q4	3.9	0.4	2.0	0.8	0.1	–9.2
2013 Q1	4.4	1.2	0.8	0.4	0.3	–7.8
Q2	4.4	2.0	0.6	0.6	0.3	–6.2
Q3	4.4	2.0	0.6	–0.2	1.4	–1.8
Q4	4.4	1.9	2.2	–0.4	0.7	1.1
2014 Q1	2.7	–0.2	2.7	–0.3	14.7	3.3
Q2	2.7	0.9	2.4	–0.1	14.2	4.7
Q3	2.7	1.5	2.2	0.6	13.1	1.9
Q4	2.7	–0.1	1.1	0.6	12.5	4.0
2015 Q1	2.2	–0.3	2.5	0.3	–1.2	1.5
Q2	2.2	–1.0	2.5	–0.1	–1.0	5.8
Q3	2.2	–1.0	2.7	–0.2	0.2	10.1
Q4	2.2	–1.0	2.0	0.1	2.1	8.2

p = provisional. r = revised

F = values are calculated using price quotes from 5 or fewer respondents

Source: Office for National Statistics

1 Please see Background Note 10 for external sources

3 Services Producer Price Indices - Industry

continued

2010 = 100 (SIC2007)

	Transportation and Storage					
	Business Air Fares 51.11	Storage & Warehousing ² 52.10	Cargo Handling ² 52.24	Freight Forwarding 52.29	National Post Parcels ¹ 53.10	Courier Services 53.20
Annual						
	K8S9	KS7Z	KHU3	K8SD	K8SW	K8SY
2012	110.2	108.7	105.9	97.9	98.3	100.0
2013	116.2	108.7	110.9	98.8	101.0	98.6
2014	121.2	107.4	112.5	97.1	105.2	99.6
2015	126.6	107.3	111.5	94.3	105.4	101.6
Percentage change, latest year on previous year						
2012	4.7	0.1	4.2	-0.9	0.8	-3.2
2013	5.4	-	4.7	0.9	2.7	-1.4
2014	4.3	-1.2	1.4	-1.7	4.2	1.0
2015	4.5	-0.1	-0.9	-2.9	0.2	2.0
Quarterly results (not seasonally adjusted)						
2012 Q1	108.0F	108.0	105.6	97.1	96.6	100.9
Q2	109.3F	108.5	105.9	98.1	98.9	100.9
Q3	110.3F	108.7	105.9	98.0	98.9	98.9
Q4	113.0F	109.7	106.1	98.3	98.9	99.1
2013 Q1	114.9F	108.9	110.9	100.1	98.9	98.5
Q2	115.6F	109.7	110.8	97.0	101.7	98.8
Q3	116.6F	110.9	111.0	99.1	101.7	98.3
Q4	117.6F	105.3	111.0	99.1	101.7	98.8
2014 Q1	119.6F	108.1	112.7	97.4	101.7	99.3
Q2	120.8F	107.7	112.7	96.7	106.4	99.3
Q3	121.0F	107.2	112.6	97.3	106.4	100.0
Q4	123.6F	106.5	112.2	97.1	106.4	99.7
2015 Q1	126.1F	107.7r	111.4	95.8	106.4	100.7
Q2	126.4F	107.7	111.8	94.4	105.1	101.3
Q3	126.7pF	106.9p	111.6p	93.9p	105.1p	101.3p
Q4	127.2pF	107.1p	111.4p	93.1p	105.1p	103.0p
Percentage change, latest quarter on previous quarter						
2012 Q1	0.2	-2.6	2.8	-	-	-2.8
Q2	1.2	0.5	0.3	1.0	2.4	-
Q3	0.9	0.2	-	-0.1	-	-2.0
Q4	2.4	0.9	0.2	0.3	-	0.2
2013 Q1	1.7	-0.7	4.5	1.8	-	-0.6
Q2	0.6	0.7	-0.1	-3.1	2.8	0.3
Q3	0.9	1.1	0.2	2.2	-	-0.5
Q4	0.9	-5.0	-	-	-	0.5
2014 Q1	1.7	2.7	1.5	-1.7	-	0.5
Q2	1.0	-0.4	-	-0.7	4.6	-
Q3	0.2	-0.5	-0.1	0.6	-	0.7
Q4	2.1	-0.7	-0.4	-0.2	-	-0.3
2015 Q1	2.0	1.1	-0.7	-1.3	-	1.0
Q2	0.2	-	0.4	-1.5	-1.2	0.6
Q3	0.2	-0.7	-0.2	-0.5	-	-
Q4	0.4	0.2	-0.2	-0.9	-	1.7
Percentage change, latest quarter on corresponding quarter of previous year						
2012 Q1	6.0	5.5	4.5	-2.5	-3.5	-2.0
Q2	4.3	-1.9	4.4	-3.6	2.4	-2.1
Q3	3.4	-1.5	4.6	1.2	2.4	-4.4
Q4	4.8	-1.1	3.3	1.2	2.4	-4.5
2013 Q1	6.4	0.8	5.0	3.1	2.4	-2.4
Q2	5.8	1.1	4.6	-1.1	2.8	-2.1
Q3	5.7	2.0	4.8	1.1	2.8	-0.6
Q4	4.1	-4.0	4.6	0.8	2.8	-0.3
2014 Q1	4.1	-0.7	1.6	-2.7	2.8	0.8
Q2	4.5	-1.8	1.7	-0.3	4.6	0.5
Q3	3.8	-3.3	1.4	-1.8	4.6	1.7
Q4	5.1	1.1	1.1	-2.0	4.6	0.9
2015 Q1	5.4	-0.4	-1.2	-1.6	4.6	1.4
Q2	4.6	-	-0.8	-2.4	-1.2	2.0
Q3	4.7	-0.3	-0.9	-3.5	-1.2	1.3
Q4	2.9	0.6	-0.7	-4.1	-1.2	3.3

p = provisional. r = revised

F = values are calculated using price quotes from 5 or fewer respondents

Source: Office for National Statistics

1 Please see Background Note 10 for external sources

2 Not currently a National Statistic

3 Services Producer Price Indices - Industry

continued

2010 = 100 (SIC2007)

	Accommodation & Food		Information & Communication				Banking
	Hotels	Canteens & Catering	Publishing Services	Sound Recording & Music Publishing	Business Telecommunications ¹	Computer Services	Financial Intermediation (Banks) ¹
	55.10	56.20	58.10	59.20	61.10	62.00	64.19/1
Annual							
	K8TE	K8TP	K8TV	K8UF	K8UI	K8UK	KB2S
2012	102.3	103.1	108.7	97.7	87.2	100.9	100.2
2013	106.0	106.5	113.1	97.7	84.8	101.8	94.4
2014	108.2	108.9	119.3	93.2	83.0	100.5	90.1
2015	107.6	110.6	122.2	92.5	79.0	100.5	87.5
Percentage change, latest year on previous year							
2012	1.3	2.0	4.6	-1.1	-6.7	0.6	-1.0
2013	3.6	3.3	4.0	-	-2.8	0.9	-5.8
2014	2.1	2.3	5.5	-4.6	-2.1	-1.3	-4.6
2015	-0.6	1.6	2.4	-0.8	-4.8	-	-2.9
Quarterly results (not seasonally adjusted)							
2012 Q1	98.1	102.2	107.6B	98.1B	87.5	100.8	101.2
Q2	100.9	102.7	108.6B	97.7B	87.1	100.9	102.8
Q3	98.5	102.9	109.1B	97.4B	88.0	100.9	104.0
Q4	111.8	104.5	109.7B	97.7B	86.3	100.8	92.8
2013 Q1	106.0	105.9	110.8B	98.1B	86.7	101.7	99.0
Q2	99.5	106.0	112.2B	98.3B	83.7	101.8	96.1
Q3	104.3	106.1	114.0B	98.1B	81.8	101.9	93.8
Q4	114.3	107.9	115.3B	96.1B	87.0	101.7	88.8
2014 Q1	100.0	108.4	117.8B	93.9B	83.6	100.6	90.9
Q2	112.6	109.0	118.7B	93.0B	80.1	100.6	90.5
Q3	112.2	108.7	120.2B	93.0B	83.2	100.7	91.8
Q4	107.9	109.4	120.4B	93.0B	85.0r	100.2	87.3
2015 Q1	104.5r	110.8	121.3B	93.0B	78.8r	100.2	88.0
Q2	108.6	111.1	122.0B	93.0B	78.2	100.5	89.3
Q3	109.2p	110.1p	122.3pB	92.1pB	79.6p	100.7p	88.2p
Q4	108.0p	110.5p	123.1pB	92.0pB	79.6p	100.6p	84.7p
Percentage change, latest quarter on previous quarter							
2012 Q1	-3.9	0.9	2.3	0.1	-4.9	0.2	4.5
Q2	2.9	0.5	0.9	-0.4	-0.5	0.1	1.6
Q3	-2.4	0.2	0.5	-0.3	1.0	-	1.2
Q4	13.5	1.6	0.5	0.3	-1.9	-0.1	-10.8
2013 Q1	-5.2	1.3	1.0	0.4	0.5	0.9	6.7
Q2	-6.1	0.1	1.3	0.2	-3.5	0.1	-2.9
Q3	4.8	0.1	1.6	-0.2	-2.3	0.1	-2.4
Q4	9.6	1.7	1.1	-2.0	6.4	-0.2	-5.3
2014 Q1	-12.5	0.5	2.2	-2.3	-3.9	-1.1	2.4
Q2	12.6	0.6	0.8	-1.0	-4.2	-	-0.4
Q3	-0.4	-0.3	1.3	-	3.9	0.1	1.4
Q4	-3.8	0.6	0.2	-	2.2	-0.5	-4.9
2015 Q1	-3.2	1.3	0.7	-	-7.3	-	0.8
Q2	3.9	0.3	0.6	-	-0.8	0.3	1.5
Q3	0.6	-0.9	0.2	-1.0	1.8	0.2	-1.2
Q4	-1.1	0.4	0.7	-0.1	-	-0.1	-4.0
Percentage change, latest quarter on corresponding quarter of previous year							
2012 Q1	0.6	1.2	4.8	-2.9	-8.7	0.5	0.1
Q2	-0.9	1.6	4.9	2.4	-7.9	0.7	-1.7
Q3	-3.8	1.8	4.6	-3.3	-3.8	0.7	1.8
Q4	9.5	3.2	4.3	-0.3	-6.2	0.2	-4.1
2013 Q1	8.1	3.6	3.0	-	-0.9	0.9	-2.2
Q2	-1.4	3.2	3.3	0.6	-3.9	0.9	-6.5
Q3	5.9	3.1	4.5	0.7	-7.0	1.0	-9.8
Q4	2.2	3.3	5.1	-1.6	0.8	0.9	-4.3
2014 Q1	-5.7	2.4	6.3	-4.3	-3.6	-1.1	-8.2
Q2	13.2	2.8	5.8	-5.4	-4.3	-1.2	-5.8
Q3	7.6	2.5	5.4	-5.2	1.7	-1.2	-2.1
Q4	-5.6	1.4	4.4	-3.2	-2.3	-1.5	-1.7
2015 Q1	4.5	2.2	3.0	-1.0	-5.7	-0.4	-3.2
Q2	-3.6	1.9	2.8	-	-2.4	-0.1	-1.3
Q3	-2.7	1.3	1.7	-1.0	-4.3	-	-3.9
Q4	0.1	1.0	2.2	-1.1	-6.4	0.4	-3.0

p = provisional. r = revised

B = values are considered less reliable due to lack of market coverage

Source: Office for National Statistics

1 Please see Background Note 10 for external sources

3 Services Producer Price Indices - Industry

continued

2010 = 100 (SIC2007)

	Real Estate Activities		Professional Scientific & Technical Activities				
	Property Rentals ¹ 68.20	Real Estate Agencies 68.30	Legal Services ² 69.10	Accountancy ² 69.20	Business Management Consultancy ² 70.22	Architectural Services ² 71.11	Engineering & Related Services ² 71.12
Annual							
	K8VA	K8VC	KHW5	KHX6	KOP4	KHY2	KHY7
2012	100.3	100.9	104.0	103.7	106.5	101.1	103.0
2013	98.9	101.8	106.3	106.2	106.2	103.2	104.9
2014	98.9	108.9	110.3	109.5	104.4	104.4	107.6
2015	100.0	117.5	112.7	112.7	103.1	106.3	108.3
Percentage change, latest year on previous year							
2012	-0.1	-0.3	2.1	1.5	2.5	0.7	2.2
2013	-1.4	0.9	2.2	2.4	-0.3	2.1	1.8
2014	-	7.0	3.8	3.1	-1.7	1.2	2.6
2015	1.1	7.9	2.2	2.9	-1.2	1.8	0.7
Quarterly results (not seasonally adjusted)							
2012 Q1	100.1	101.3	103.2	104.0	106.7	102.0	102.6
Q2	100.2	101.0	103.2	102.6	106.7	100.2	103.6
Q3	100.7	100.7	104.7	103.7	106.4	100.0	102.8
Q4	100.4	100.6	104.9	104.4	106.0	102.3	103.0
2013 Q1	99.4	100.8	105.2	106.5	106.4	102.5	103.7
Q2	99.7	101.2	106.0	106.0	106.2	103.4	105.0
Q3	98.2	101.9	106.5	105.6	106.0	103.7	105.2
Q4	98.3	103.4	107.4	106.6	106.0	103.3	105.6
2014 Q1	98.4	105.5	109.4	108.9	106.4	103.9	107.0
Q2	98.7	107.4	110.2	108.7	105.0	104.8	107.7
Q3	99.1	110.1	110.1	109.4	103.6	104.4	107.8
Q4	99.2	112.7	111.5	110.9	102.6	104.5	107.9
2015 Q1	99.4	114.3r	111.6	113.3	103.0	105.8	108.0
Q2	99.5	116.3	112.6	112.4	103.1	106.1	108.7
Q3	100.0p	118.5p	113.0p	112.1p	102.8p	106.5p	108.3p
Q4	101.0p	120.9p	113.5p	113.2p	103.5p	106.9p	108.4p
Percentage change, latest quarter on previous quarter							
2012 Q1	-0.1	-0.1	0.4	1.0	-	0.4	1.9
Q2	0.1	-0.3	-	-1.3	-	-1.8	1.0
Q3	0.5	-0.3	1.5	1.1	-0.3	-0.2	-0.8
Q4	-0.3	-0.1	0.2	0.7	-0.4	2.3	0.2
2013 Q1	-1.0	0.2	0.3	2.0	0.4	0.2	0.7
Q2	0.3	0.4	0.8	-0.5	-0.2	0.9	1.3
Q3	-1.5	0.7	0.5	-0.4	-0.2	0.3	0.2
Q4	0.1	1.5	0.8	0.9	-	-0.4	0.4
2014 Q1	0.1	2.0	1.9	2.2	0.4	0.6	1.3
Q2	0.3	1.8	0.7	-0.2	-1.3	0.9	0.7
Q3	0.4	2.5	-0.1	0.6	-1.3	-0.4	0.1
Q4	0.1	2.4	1.3	1.4	-1.0	0.1	0.1
2015 Q1	0.2	1.4	0.1	2.2	0.4	1.2	0.1
Q2	0.1	1.7	0.9	-0.8	0.1	0.3	0.6
Q3	0.5	1.9	0.4	-0.3	-0.3	0.4	-0.4
Q4	1.0	2.0	0.4	1.0	0.7	0.4	0.1
Percentage change, latest quarter on corresponding quarter of previous year							
2012 Q1	-0.4	0.3	2.4	1.2	4.6	1.7	1.4
Q2	-0.3	0.2	1.9	1.4	3.6	0.1	2.8
Q3	0.3	-0.7	1.9	1.7	2.3	0.2	2.3
Q4	0.2	-0.8	2.0	1.4	-0.7	0.7	2.3
2013 Q1	-0.7	-0.5	1.9	2.4	-0.3	0.5	1.1
Q2	-0.5	0.2	2.7	3.3	-0.5	3.2	1.4
Q3	-2.5	1.2	1.7	1.8	-0.4	3.7	2.3
Q4	-2.1	2.8	2.4	2.1	-	1.0	2.5
2014 Q1	-1.0	4.7	4.0	2.3	-	1.4	3.2
Q2	-1.0	6.1	4.0	2.5	-1.1	1.4	2.6
Q3	0.9	8.0	3.4	3.6	-2.3	0.7	2.5
Q4	0.9	9.0	3.8	4.0	-3.2	1.2	2.2
2015 Q1	1.0	8.3	2.0	4.0	-3.2	1.8	0.9
Q2	0.8	8.3	2.2	3.4	-1.8	1.2	0.9
Q3	0.9	7.6	2.6	2.5	-0.8	2.0	0.5
Q4	1.8	7.3	1.8	2.1	0.9	2.3	0.5

p = provisional. r = revised

Source: Office for National Statistics

1 Please see Background Note 10 for external sources

2 Not currently a National Statistic

3 Services Producer Price Indices - Industry

continued

2010 = 100 (SIC2007)

Professional Scientific & Technical Activities

	Technical Testing & Analysis 71.20	Advertising Services ¹ 73.12	Market Research 73.20	Commercial Film Processing 74.20	Translation & Interpretation Services 74.30
Annual					
	K8WD	KOQ5	K8X7	K8XC	K8XI
2012	104.0	99.7	101.1	103.0	99.9
2013	105.6	99.8	101.9	108.2	100.6
2014	107.1	102.8	103.3	110.1	100.6
2015	108.1	104.0	105.8	115.8	101.3
Percentage change, latest year on previous year					
2012	3.4	-3.2	0.2	0.4	-
2013	1.5	0.1	0.8	5.0	0.7
2014	1.4	3.0	1.4	1.8	-
2015	0.9	1.2	2.4	5.2	0.7
Quarterly results (not seasonally adjusted)					
2012 Q1	102.9	98.2	101.1	103.0F	99.9
Q2	103.7	98.6	101.1	103.0F	99.9
Q3	104.6	99.7	101.2	103.0F	99.9
Q4	104.6	102.2	101.1	103.0F	99.9
2013 Q1	104.9	97.0	101.9	103.0F	100.2
Q2	105.5	99.3	101.9	110.0F	101.0
Q3	106.0	101.5	101.9	110.0F	100.7
Q4	105.9	101.5	101.9	110.0F	100.7
2014 Q1	106.8	100.8	102.8	110.0F	100.6
Q2	107.0	101.7	102.8	110.1F	100.6
Q3	107.3	104.8	103.6	110.1F	100.6
Q4	107.4	103.8	104.2	110.1F	100.6
2015 Q1	107.9	103.4r	105.5	110.1F	100.6
Q2	108.7	103.5	105.8	117.7F	101.6
Q3	107.9p	103.9p	105.8p	117.7pF	101.6p
Q4	107.9p	105.3p	105.9p	117.7pF	101.6p
Percentage change, latest quarter on previous quarter					
2012 Q1	2.5	-6.5	0.2	-	-
Q2	0.8	0.4	-	-	-
Q3	0.9	1.1	0.1	-	-
Q4	-	2.5	-0.1	-	-
2013 Q1	0.3	-5.1	0.8	-	0.3
Q2	0.6	2.4	-	6.8	0.8
Q3	0.5	2.2	-	-	-0.3
Q4	-0.1	-	-	-	-
2014 Q1	0.8	-0.7	0.9	-	-0.1
Q2	0.2	0.9	-	0.1	-
Q3	0.3	3.0	0.8	-	-
Q4	0.1	-1.0	0.6	-	-
2015 Q1	0.5	-0.4	1.2	-	-
Q2	0.7	0.1	0.3	6.9	1.0
Q3	-0.7	0.4	-	-	-
Q4	-	1.3	0.1	-	-
Percentage change, latest quarter on corresponding quarter of previous year					
2012 Q1	2.3	-2.4	0.2	1.4	-0.1
Q2	3.0	-4.9	0.2	0.1	-0.1
Q3	4.0	-2.9	0.3	-	-
Q4	4.2	-2.7	0.2	-	-
2013 Q1	1.9	-1.2	0.8	-	0.3
Q2	1.7	0.7	0.8	6.8	1.1
Q3	1.3	1.8	0.7	6.8	0.8
Q4	1.2	-0.7	0.8	6.8	0.8
2014 Q1	1.8	3.9	0.9	6.8	0.4
Q2	1.4	2.4	0.9	0.1	-0.4
Q3	1.2	3.3	1.7	0.1	-0.1
Q4	1.4	2.3	2.3	0.1	-0.1
2015 Q1	1.0	2.6	2.6	0.1	-
Q2	1.6	1.8	2.9	6.9	1.0
Q3	0.6	-0.9	2.1	6.9	1.0
Q4	0.5	1.4	1.6	6.9	1.0

p = provisional. r = revised

F = values are calculated using price quotes from 5 of fewer respondents

Source: Office for National Statistics

1 Not currently a National Statistic

3 Services Producer Price Indices - Industry

continued

2010 = 100 (SIC2007)

Administrative & Support Services

	Construction Plant Hire 77.32	Employment Agencies 78.00	Security Services 80.11	Industrial Cleaning 81.22	Secretarial Services 82.10	Contract Packing 82.92
Annual						
	K8XQ	K8XZ	K8YH	K8YQ	K8Z2	K8Z9
2012	102.9	101.3	99.4	101.0	101.7	98.9
2013	105.0	102.1	97.6	101.9	103.0	100.8
2014	107.1	102.6	97.4	103.2	104.0	101.0
2015	107.2	102.2	96.7	103.4	103.5	100.1
Percentage change, latest year on previous year						
2012	-0.7	1.1	0.3	0.4	0.9	0.8
2013	2.0	0.8	-1.8	0.9	1.3	1.9
2014	2.0	0.5	-0.2	1.3	1.0	0.2
2015	0.1	-0.4	-0.7	0.2	-0.5	-0.9
Quarterly results (not seasonally adjusted)						
2012 Q1	102.1	100.4	99.4	100.7	101.5	98.6
Q2	102.4	100.9	99.5	100.7	101.3	98.6
Q3	103.7	102.0	99.2	101.1	102.1	99.2
Q4	103.4	102.0	99.4	101.3	102.0	99.3
2013 Q1	104.7	101.9	99.4	101.3	102.2	100.5
Q2	104.6	101.7	96.9	101.0	102.9	100.9
Q3	105.2	101.6	96.9	102.0	103.2	100.9
Q4	105.7	103.0	97.2	103.2	103.6	101.0
2014 Q1	106.4	103.1	97.2	103.4	104.1	101.1
Q2	107.4	103.0	97.5	103.9	103.9	101.0
Q3	107.3	102.0	97.4	103.6	104.0	101.1
Q4	107.3	102.2	97.4	102.1	104.0	101.0
2015 Q1	107.5r	102.4	96.4	102.6	103.4	100.0
Q2	107.1	102.7	96.3	103.0	103.2	99.9
Q3	107.2p	101.2p	96.7p	103.5p	103.9p	100.3p
Q4	107.1p	102.6p	97.3p	104.6p	103.6p	100.2p
Percentage change, latest quarter on previous quarter						
2012 Q1	-1.7	0.2	-	0.3	1.0	0.6
Q2	0.3	0.5	0.1	-	-0.2	-
Q3	1.3	1.1	-0.3	0.4	0.8	0.6
Q4	-0.3	-	0.2	0.2	-0.1	0.1
2013 Q1	1.3	-0.1	-	-	0.2	1.2
Q2	-0.1	-0.2	-2.5	-0.3	0.7	0.4
Q3	0.6	-0.1	-	1.0	0.3	-
Q4	0.5	1.4	0.3	1.2	0.4	0.1
2014 Q1	0.7	0.1	-	0.2	0.5	0.1
Q2	0.9	-0.1	0.3	0.5	-0.2	-0.1
Q3	-0.1	-1.0	-0.1	-0.3	0.1	0.1
Q4	-	0.2	-	-1.4	-	-0.1
2015 Q1	0.2	0.2	-1.0	0.5	-0.6	-1.0
Q2	-0.4	0.3	-0.1	0.4	-0.2	-0.1
Q3	0.1	-1.5	0.4	0.5	0.7	0.4
Q4	-0.1	1.4	0.6	1.1	-0.3	-0.1
Percentage change, latest quarter on corresponding quarter of previous year						
2012 Q1	2.3	0.2	0.8	-	1.6	0.2
Q2	0.3	0.6	0.3	-0.1	-0.1	0.7
Q3	-4.4	1.7	-	0.8	0.6	1.2
Q4	-0.5	1.8	-	0.9	1.5	1.3
2013 Q1	2.5	1.5	-	0.6	0.7	1.9
Q2	2.1	0.8	-2.6	0.3	1.6	2.3
Q3	1.4	-0.4	-2.3	0.9	1.1	1.7
Q4	2.2	1.0	-2.2	1.9	1.6	1.7
2014 Q1	1.6	1.2	-2.2	2.1	1.9	0.6
Q2	2.7	1.3	0.6	2.9	1.0	0.1
Q3	2.0	0.4	0.5	1.6	0.8	0.2
Q4	1.5	-0.8	0.2	-1.1	0.4	-
2015 Q1	1.0	-0.7	-0.8	-0.8	-0.7	-1.1
Q2	-0.3	-0.3	-1.2	-0.9	-0.7	-1.1
Q3	-0.1	-0.8	-0.7	-0.1	-0.1	-0.8
Q4	-0.2	0.4	-0.1	2.4	-0.4	-0.8

p = provisional. r = revised

Source: Office for National Statistics

3 Services Producer Price Indices - Industry

continued

2010 = 100 (SIC2007)

	Education	Other Services
	Adult Education 85.59	Commercial Washing & Dry Cleaning 96.01
Annual		
	K8ZG	K8ZM
2012	100.2	101.1
2013	102.3	101.8
2014	103.8	102.6
2015	103.9	104.5
Percentage change, latest year on previous year		
2012	-0.8	0.1
2013	2.1	0.7
2014	1.5	0.8
2015	0.1	1.9
Quarterly results (not seasonally adjusted)		
2012 Q1	100.2	101.5
Q2	100.4	101.7
Q3	100.0	100.6
Q4	100.0	100.6
2013 Q1	101.9	101.5
Q2	101.9	101.7
Q3	102.7	102.1
Q4	102.7	102.1
2014 Q1	104.1	102.1
Q2	104.2	102.8
Q3	104.2	102.8
Q4	102.8	102.8
2015 Q1	103.2	104.0
Q2	103.4	104.3
Q3	104.5p	104.4p
Q4	104.5p	105.1p
Percentage change, latest quarter on previous quarter		
2012 Q1	1.1	0.4
Q2	0.2	0.2
Q3	-0.4	-1.1
Q4	-	-
2013 Q1	1.9	0.9
Q2	-	0.2
Q3	0.8	0.4
Q4	-	-
2014 Q1	1.4	-
Q2	0.1	0.7
Q3	-	-
Q4	-1.3	-
2015 Q1	0.4	1.2
Q2	0.2	0.3
Q3	1.1	0.1
Q4	-	0.7
Percentage change, latest quarter on corresponding quarter of previous year		
2012 Q1	-2.0	0.8
Q2	-3.3	0.7
Q3	1.2	-0.5
Q4	0.9	-0.5
2013 Q1	1.7	-
Q2	1.5	-
Q3	2.7	1.5
Q4	2.7	1.5
2014 Q1	2.2	0.6
Q2	2.3	1.1
Q3	1.5	0.7
Q4	0.1	0.7
2015 Q1	-0.9	1.9
Q2	-0.8	1.5
Q3	0.3	1.6
Q4	1.7	2.2

p = provisional. r = revised

Source: Office for National Statistics

1R Services Producer Price Indices - Aggregate Revisions

2010=100 (SIC2007)

	Gross Sector			Net Sector		
	SPPI - All services			SPPI - All services		
	Index (2010=100)	percentage change over		Index (2010=100)	percentage change over	
Quarter		Year	Quarter		Year	
	9907010000			9907020000		
	K8ZU			K8ZW		
2012 Q1	-	-	-	-	-	-
Q2	-	-	-	-	-	-
Q3	-	-	-	-	-	-
Q4	-	-	-	-	-	-
2013 Q1	-	-	-	-	-	-
Q2	-	-	-	-	-	-
Q3	-	-	-	-	-	-
Q4	-	-	-	-	-	-
2014 Q1	-	-	-	-	-	-
Q2	-	-	-	-	-	-
Q3	-	-	-	-	-	-
Q4	-0.1	-0.1	-0.1	-0.1	-0.1	-0.1
2015 Q1	-0.2	-0.1	-0.2	-0.1	-	-0.1
Q2	-0.2	-	-0.2	-0.2	-0.1	-0.2
Q3	-0.3	-0.1	-0.3	-0.2	-	-0.2
Q4

Source: Office for National Statistics

2R Services Producer Price Indices - Section Revisions

2010=100 (SIC2007)

	Water Supply, Sewerage and Waste Management			Wholesale, Retail Trade of Motor Vehicles and Motorcycles		
	Index 2010=100	percentage change over		Index 2010=100	percentage change over	
		Quarter	Year		Quarter	Year
	9907101000			9907103000		
	MF8N			MF2J		
2012 Q1	-	-	-	-	-	-
Q2	-	-	-	-	-	-
Q3	-	-	-	-	-	-
Q4	-	-	-	-	-	-
2013 Q1	-	-	-	-	-	-
Q2	-	-	-	-	-	-
Q3	-	-	-	-	-	-
Q4	-	-	-	-	-	-
2014 Q1	-	-	-	-	-	-
Q2	-	-	-	-	-	-
Q3	-	-	-	-	-	-
Q4	-	-	-	-	-	-
2015 Q1	-	-	-	-	-	-
Q2	-	-	-	-	-	-
Q3	-0.1	-0.1	-0.1	-	-	-
Q4

	Transportation and Storage			Accommodation and Food		
	Index 2010=100	percentage change over		Index 2010=100	percentage change over	
		Quarter	Year		Quarter	Year
	9907104000			9907105000		
	MF2K			MF2L		
2012 Q1	-	-	-	-	-	-
Q2	-	-	-	-	-	-
Q3	-	-	-	-	-	-
Q4	-	-	-	-	-	-
2013 Q1	-	-	-	-	-	-
Q2	-	-	-	-	-	-
Q3	-	-	-	-	-	-
Q4	-	-	-	-	-	-
2014 Q1	-	-	-	-	-	-
Q2	-	-	-	-	-	-
Q3	-	-	-	-	-	-
Q4	-	-	-	-	-	-
2015 Q1	-	-	-	-0.9	-0.8	-0.8
Q2	-	-	-	-0.1	0.7	-0.1
Q3	-0.1	-0.1	-	-0.4	-0.3	-0.4
Q4

Source: Office for National Statistics

2R Services Producer Price Indices - Section Revisions

continued

2010=100 (SIC2007)

	Information and Communication			Real Estate Activities		
	Index 2010=100	percentage change over		Index 2010=100	percentage change over	
		Quarter	Year		Quarter	Year
	9907106000			9907108000		
	MF2M			MF8P		
2012 Q1	-	-	-	-	-	-
Q2	-	-	-	-	-	-
Q3	-	-	-	-	-	-
Q4	-	-	-	-	-	-
2013 Q1	-	-	-	-	-	-
Q2	-	-	-	-	-	-
Q3	-	-	-	-	-	-
Q4	-	-	-	-	-	-
2014 Q1	-	-	-	-	-	-
Q2	-	-	-	-	-	-
Q3	-	-	-	-	-	-
Q4	-0.5	-0.5	-0.5	-	-	-
2015 Q1	-0.8	-0.3	-0.8	-0.1	-0.1	-0.1
Q2	-0.9	-0.1	-0.9	-	0.1	-
Q3	-0.5	0.4	-0.5	-0.1	-	-0.1
Q4

	Professional, Scientific and Technical Activities			Administrative and Support Services		
	Index 2010=100	percentage change over		Index 2010=100	percentage change over	
		Quarter	Year		Quarter	Year
	9907109000			9907110000		
	MF8Q			MF8R		
2012 Q1	-	-	-	-	-	-
Q2	-	-	-	-	-	-
Q3	-	-	-	-	-	-
Q4	-	-	-	-	-	-
2013 Q1	-	-	-	-	-	-
Q2	-	-	-	-	-	-
Q3	-	-	-	-	-	-
Q4	-	-	-	-	-	-
2014 Q1	-	-	-	-	-	-
Q2	-	-	-	-	-	-
Q3	-	-	-	-	-	-
Q4	-	-	-	-	-	-
2015 Q1	0.1	0.1	0.1	-	-	-
Q2	0.1	-	0.1	-	-	-
Q3	-	-0.1	-	-0.8	-0.8	-0.8
Q4

Source: Office for National Statistics

2R Services Producer Price Indices - Section Revisions

continued

2010=100 (SIC2007)

	Education			Other Services		
	Index 2010=100	percentage change over		Index 2010=100	percentage change over	
		Quarter	Year		Quarter	Year
	9907113000			9907116000		
	MF8S			MF8T		
2012 Q1	-	-	-	-	-	-
Q2	-	-	-	-	-	-
Q3	-	-	-	-	-	-
Q4	-	-	-	-	-	-
2013 Q1	-	-	-	-	-	-
Q2	-	-	-	-	-	-
Q3	-	-	-	-	-	-
Q4	-	-	-	-	-	-
2014 Q1	-	-	-	-	-	-
Q2	-	-	-	-	-	-
Q3	-	-	-	-	-	-
Q4	-	-	-	-	-	-
2015 Q1	-	-	-	-	-	-
Q2	-	-	-	-	-	-
Q3	-	-	-	-	-	-
Q4

Source: Office for National Statistics

3R Services Producer Prices Indices - Industry Revisions

2010 = 100 (SIC2007)

	Water Supply, Sewerage and Waste Management			Wholesale, Retail Trade; Repair of Motor Vehicles and Motorcycles
	Sewerage Services 37.00	Waste Disposal 38.11	Sorted Recovered Materials Services 38.32	Motor Vehicles 45.20
Annual	K8PX	K8Q3	K8QL	K8QW
2012	-	-	-	-
2013	-	-	-	-
2014	-	-	-	-
2015
Percentage change, latest year on previous year				
2012	-	-	-	-
2013	-	-	-	-
2014	-	-	-	-
2015
Quarterly results (not seasonally adjusted)				
2012 Q1	-	-	-	-
Q2	-	-	-	-
Q3	-	-	-	-
Q4	-	-	-	-
2013 Q1	-	-	-	-
Q2	-	-	-	-
Q3	-	-	-	-
Q4	-	-	-	-
2014 Q1	-	-	-	-
Q2	-	-	-	-
Q3	-	-	-	-
Q4	-	-	-	-
2015 Q1	-	-	-	-
Q2	-	-	-	-
Q3	-	0.1	-0.1	-
Q4
Percentage change, latest quarter on previous quarter				
2012 Q1	-	-	-	-
Q2	-	-	-	-
Q3	-	-	-	-
Q4	-	-	-	-
2013 Q1	-	-	-	-
Q2	-	-	-	-
Q3	-	-	-	-
Q4	-	-	-	-
2014 Q1	-	-	-	-
Q2	-	-	-	-
Q3	-	-	-	-
Q4	-	-	-	-
2015 Q1	-	-	-	-
Q2	-	-	-	-
Q3	-	0.1	-0.1	-
Q4
Percentage change, latest quarter on corresponding quarter of previous year				
2012 Q1	-	-	-	-
Q2	-	-	-	-
Q3	-	-	-	-
Q4	-	-	-	-
2013 Q1	-	-	-	-
Q2	-	-	-	-
Q3	-	-	-	-
Q4	-	-	-	-
2014 Q1	-	-	-	-
Q2	-	-	-	-
Q3	-	-	-	-
Q4	-	-	-	-
2015 Q1	-	-	-	-
Q2	-	-	-	-
Q3	-	0.1	-0.1	-
Q4

3R Services Producer Prices Indices - Industry Revisions

continued

2010 = 100 (SIC2007)

	Transportation and Storage					
	Business Rail Fares 49.11	Rail Freight 49.21	Bus & Coach Hire 49.39	Freight Transport by Road 49.41	Commercial Vehicle Ferries 50.11	Sea & Coastal Water Freight 50.20
Annual	K8QY	K8R2	K8RE	K8RO	K8RW	K8S5
2012	-	-	-	-	-	-
2013	-	-	-	-	-	-
2014	-	-	-	-	-	-
2015
Percentage change, latest year on previous year						
2012	-	-	-	-	-	-
2013	-	-	-	-	-	-
2014	-	-	-	-	-	-
2015
Quarterly results (not seasonally adjusted)						
2012 Q1	-	-	-	-	-	-
Q2	-	-	-	-	-	-
Q3	-	-	-	-	-	-
Q4	-	-	-	-	-	-
2013 Q1	-	-	-	-	-	-
Q2	-	-	-	-	-	-
Q3	-	-	-	-	-	-
Q4	-	-	-	-	-	-
2014 Q1	-	-	-	-	-	-
Q2	-	-	-	-	-	-
Q3	-	-	-	-	-	-
Q4	-	-	-	-	-	-
2015 Q1	-	-	-	-	-	-
Q2	-	-	-	0.1	-	-
Q3	-	-	-	0.2	-	-
Q4
Percentage change, latest quarter on previous quarter						
2012 Q1	-	-	-	-	-	-
Q2	-	-	-	-	-	-
Q3	-	-	-	-	-	-
Q4	-	-	-	-	-	-
2013 Q1	-	-	-	-	-	-
Q2	-	-	-	-	-	-
Q3	-	-	-	-	-	-
Q4	-	-	-	-	-	-
2014 Q1	-	-	-	-	-	-
Q2	-	-	-	-	-	-
Q3	-	-	-	-	-	-
Q4	-	-	-	-	-	-
2015 Q1	-	-	-	-	-	-
Q2	-	-	-	0.1	-	-
Q3	-	-	-	0.1	-	-
Q4
Percentage change, latest quarter on corresponding quarter of previous year						
2012 Q1	-	-	-	-	-	-
Q2	-	-	-	-	-	-
Q3	-	-	-	-	-	-
Q4	-	-	-	-	-	-
2013 Q1	-	-	-	-	-	-
Q2	-	-	-	-	-	-
Q3	-	-	-	-	-	-
Q4	-	-	-	-	-	-
2014 Q1	-	-	-	-	-	-
Q2	-	-	-	-	-	-
Q3	-	-	-	-	-	-
Q4	-	-	-	-	-	-
2015 Q1	-	-	-	-	-	-
Q2	-	-	-	0.1	-	-
Q3	-	-	-	0.2	-	-
Q4

Source: Office for National Statistics

3R Services Producer Prices Indices - Industry Revisions

continued

2010 = 100 (SIC2007)

	Transportation and Storage					
	Business Air Fares 51.11	Storage & Warehousing 52.10	Cargo Handling 52.24	Freight Forwarding 52.29	National Post Parcels 53.10	Courier Services 53.20
Annual						
	K8S9	KS7Z	KHU3	K8SD	K8SW	K8SY
2012	-	-	-	-	-	-
2013	-	-	-	-	-	-
2014	-	-	-	-	-	-
2015
Percentage change, latest year on previous year						
2012	-	-	-	-	-	-
2013	-	-	-	-	-	-
2014	-	-	-	-	-	-
2015
Quarterly results (not seasonally adjusted)						
2012 Q1	-	-	-	-	-	-
Q2	-	-	-	-	-	-
Q3	-	-	-	-	-	-
Q4	-	-	-	-	-	-
2013 Q1	-	-	-	-	-	-
Q2	-	-	-	-	-	-
Q3	-	-	-	-	-	-
Q4	-	-	-	-	-	-
2014 Q1	-	-	-	-	-	-
Q2	-	-	-	-	-	-
Q3	-	-	-	-	-	-
Q4	-	-	-	-	-	-
2015 Q1	-	-0.1	-	-	-	-
Q2	-	-0.1	-	-	-	-
Q3	-	-	-	0.1	-	0.1
Q4
Percentage change, latest quarter on previous quarter						
2012 Q1	-	-	-	-	-	-
Q2	-	-	-	-	-	-
Q3	-	-	-	-	-	-
Q4	-	-	-	-	-	-
2013 Q1	-	-	-	-	-	-
Q2	-	-	-	-	-	-
Q3	-	-	-	-	-	-
Q4	-	-	-	-	-	-
2014 Q1	-	-	-	-	-	-
Q2	-	-	-	-	-	-
Q3	-	-	-	-	-	-
Q4	-	-	-	-	-	-
2015 Q1	-	-0.1	-	-	-	-
Q2	-	-	-	-	-	-
Q3	-	0.1	-	0.1	-	0.1
Q4
Percentage change, latest quarter on corresponding quarter of previous year						
2012 Q1	-	-	-	-	-	-
Q2	-	-	-	-	-	-
Q3	-	-	-	-	-	-
Q4	-	-	-	-	-	-
2013 Q1	-	-	-	-	-	-
Q2	-	-	-	-	-	-
Q3	-	-	-	-	-	-
Q4	-	-	-	-	-	-
2014 Q1	-	-	-	-	-	-
Q2	-	-	-	-	-	-
Q3	-	-	-	-	-	-
Q4	-	-	-	-	-	-
2015 Q1	-	-0.1	-	-	-	-
Q2	-	-0.1	-	-	-	-
Q3	-	-	-	0.1	-	0.1
Q4

3R Services Producer Prices Indices - Industry Revisions

continued

2010 = 100 (SIC2007)

	Accommodation & Food		Information & Communication				Banking
	Hotels	Canteens & Catering	Publishing Services	Sound Recording & Music Publishing	Business Telecommunications	Computer Services	Financial Intermediation (Banks)
	55.10	56.20	58.10	59.20	61.10	62.00	64.19/1
Annual							
	K8TE	K8TP	K8TV	K8UF	K8UI	K8UK	KB2S
2012	-	-	-	-	-	-	-
2013	-	-	-	-	-	-	-
2014	-	-	-	-	0.4	-	..
2015
Percentage change, latest year on previous year							
2012	-	-	-	-	-	-	-
2013	-	-	-	-	-	-	-
2014	-	-	-	-	0.5	-	..
2015
Quarterly results (not seasonally adjusted)							
2012 Q1	-	-	-	-	-	-	-
Q2	-	-	-	-	-	-	-
Q3	-	-	-	-	-	-	-
Q4	-	-	-	-	-	-	-
2013 Q1	-	-	-	-	-	-	-
Q2	-	-	-	-	-	-	-
Q3	-	-	-	-	-	-	-
Q4	-	-	-	-	-	-	-
2014 Q1	-	-	-	-	-	-	-
Q2	-	-	-	-	-	-	-
Q3	-	-	-	-	-	-	..
Q4	-	-	-	-	1.6	-	..
2015 Q1	1.6	-	-	-	2.7	-	..
Q2	0.2	-	-	-	3.3	-	..
Q3	0.7	-	-	-	1.9	-	..
Q4
Percentage change, latest quarter on previous quarter							
2012 Q1	-	-	-	-	-	-	-
Q2	-	-	-	-	-	-	-
Q3	-	-	-	-	-	-	-
Q4	-	-	-	-	-	-	-
2013 Q1	-	-	-	-	-	-	-
Q2	-	-	-	-	-	-	-
Q3	-	-	-	-	-	-	-
Q4	-	-	-	-	-	-	-
2014 Q1	-	-	-	-	-	-	-
Q2	-	-	-	-	-	-	-
Q3	-	-	-	-	-	-	..
Q4	-	-	-	-	1.9	-	..
2015 Q1	1.5	-	-	-	1.4	-	..
Q2	-1.4	-	-	-	0.8	-	..
Q3	0.5	-	-	-	-1.8	-	..
Q4
Percentage change, latest quarter on corresponding quarter of previous year							
2012 Q1	-	-	-	-	-	-	-
Q2	-	-	-	-	-	-	-
Q3	-	-	-	-	-	-	-
Q4	-	-	-	-	-	-	-
2013 Q1	-	-	-	-	-	-	-
Q2	-	-	-	-	-	-	-
Q3	-	-	-	-	-	-	-
Q4	-	-	-	-	-	-	-
2014 Q1	-	-	-	-	-	-	-
Q2	-	-	-	-	-	-	-
Q3	-	-	-	-	-	-	..
Q4	-	-	-	-	1.8	-	..
2015 Q1	1.6	-	-	-	3.2	-	..
Q2	0.2	-	-	-	4.1	-	..
Q3	0.6	-	-	-	2.3	-	..
Q4

3R Services Producer Prices Indices - Industry Revisions

continued

2010 = 100 (SIC2007)

	Real Estate Activities		Professional Scientific & Technical Activities				
	Property Rentals 68.20	Real Estate Agencies 68.30	Legal Services 69.10	Accountancy 69.20	Business Management Consultancy 70.22	Architectural Services 71.11	Engineering & Related Services 71.12
Annual	K8VA	K8VC	KHW5	KHX6	KOP4	KHY2	KHY7
2012	-	-	-	-	-	-	-
2013	-	-	-	-	-	-	-
2014	-	-	-	-	-	-	-
2015
Percentage change, latest year on previous year							
2012	-	-	-	-	-	-	-
2013	-	-	-	-	-	-	-
2014	-	-	-	-	-	-	-
2015
Quarterly results (not seasonally adjusted)							
2012 Q1	-	-	-	-	-	-	-
Q2	-	-	-	-	-	-	-
Q3	-	-	-	-	-	-	-
Q4	-	-	-	-	-	-	-
2013 Q1	-	-	-	-	-	-	-
Q2	-	-	-	-	-	-	-
Q3	-	-	-	-	-	-	-
Q4	-	-	-	-	-	-	-
2014 Q1	-	-	-	-	-	-	-
Q2	-	-	-	-	-	-	-
Q3	-	-	-	-	-	-	-
Q4	-	-	-	-	-	-	-
2015 Q1	-	0.2	-	-	-	-	-
Q2	-	0.2	-	-	-	-	-
Q3	-	0.4	0.4	-	-	-	-
Q4
Percentage change, latest quarter on previous quarter							
2012 Q1	-	-	-	-	-	-	-
Q2	-	-	-	-	-	-	-
Q3	-	-	-	-	-	-	-
Q4	-	-	-	-	-	-	-
2013 Q1	-	-	-	-	-	-	-
Q2	-	-	-	-	-	-	-
Q3	-	-	-	-	-	-	-
Q4	-	-	-	-	-	-	-
2014 Q1	-	-	-	-	-	-	-
Q2	-	-	-	-	-	-	-
Q3	-	-	-	-	-	-	-
Q4	-	-	-	-	-	-	-
2015 Q1	-	0.2	-	-	-	-	-
Q2	-	-	-	-	-	-	-
Q3	-	0.2	0.4	-	-	-	-
Q4
Percentage change, latest quarter on corresponding quarter of previous year							
2012 Q1	-	-	-	-	-	-	-
Q2	-	-	-	-	-	-	-
Q3	-	-	-	-	-	-	-
Q4	-	-	-	-	-	-	-
2013 Q1	-	-	-	-	-	-	-
Q2	-	-	-	-	-	-	-
Q3	-	-	-	-	-	-	-
Q4	-	-	-	-	-	-	-
2014 Q1	-	-	-	-	-	-	-
Q2	-	-	-	-	-	-	-
Q3	-	-	-	-	-	-	-
Q4	-	-	-	-	-	-	-
2015 Q1	-	0.2	-	-	-	-	-
Q2	-	0.2	-	-	-	-	-
Q3	-	0.4	0.4	-	-	-	-
Q4

3R Services Producer Prices Indices - Industry Revisions

continued

2010 = 100 (SIC2007)

Professional Scientific & Technical Activities

	Technical Testing & Analysis 71.20	Advertising Services 73.12	Market Research 73.20	Commercial Film Processing 74.20	Translation & Interpretation Services 74.30
Annual					
	K8WD	KOQ5	K8X7	K8XC	K8XI
2012	-	-	-	-	-
2013	-	-	-	-	-
2014	-	-	-	-	-
2015
Percentage change, latest year on previous year					
2012	-	-	-	-	-
2013	-	-	-	-	-
2014	-	-	-	-	-
2015
Quarterly results (not seasonally adjusted)					
2012 Q1	-	-	-	-	-
Q2	-	-	-	-	-
Q3	-	-	-	-	-
Q4	-	-	-	-	-
2013 Q1	-	-	-	-	-
Q2	-	-	-	-	-
Q3	-	-	-	-	-
Q4	-	-	-	-	-
2014 Q1	-	-	-	-	-
Q2	-	-	-	-	-
Q3	-	-	-	-	-
Q4	-	-	-	-	-
2015 Q1	-	-0.1	-	-	-
Q2	-	-	-	0.1	-
Q3	0.1	-0.5	-	0.1	-
Q4
Percentage change, latest quarter on previous quarter					
2012 Q1	-	-	-	-	-
Q2	-	-	-	-	-
Q3	-	-	-	-	-
Q4	-	-	-	-	-
2013 Q1	-	-	-	-	-
Q2	-	-	-	-	-
Q3	-	-	-	-	-
Q4	-	-	-	-	-
2014 Q1	-	-	-	-	-
Q2	-	-	-	-	-
Q3	-	-	-	-	-
Q4	-	-	-	-	-
2015 Q1	-	-0.1	-	-	-
Q2	-	0.1	-	0.1	-
Q3	0.1	-0.5	-	-	-
Q4
Percentage change, latest quarter on corresponding quarter of previous year					
2012 Q1	-	-	-	-	-
Q2	-	-	-	-	-
Q3	-	-	-	-	-
Q4	-	-	-	-	-
2013 Q1	-	-	-	-	-
Q2	-	-	-	-	-
Q3	-	-	-	-	-
Q4	-	-	-	-	-
2014 Q1	-	-	-	-	-
Q2	-	-	-	-	-
Q3	-	-	-	-	-
Q4	-	-	-	-	-
2015 Q1	-	-0.1	-	-	-
Q2	-	-	-	0.1	-
Q3	0.1	-0.5	-	0.1	-
Q4

Source: Office for National Statistics

3R Services Producer Prices Indices - Industry Revisions

continued

2010 = 100 (SIC2007)

	Administrative & Support Services					
	Construction Plant Hire 77.32	Employment Agencies 78.00	Security Services 80.11	Industrial Cleaning 81.22	Secretarial Services 82.10	Contract Packing 82.92
Annual						
	K8XQ	K8XZ	K8YH	K8YQ	K8Z2	K8Z9
2012	-	-	-	-	-	-
2013	-	-	-	-	-	-
2014	-	-	-	-	..	-
2015
Percentage change, latest year on previous year						
2012	-	-	-	-	-	-
2013	-	-	-	-	-	-
2014	-	-	-	-	..	-
2015
Quarterly results (not seasonally adjusted)						
2012 Q1	-	-	-	-	-	-
Q2	-	-	-	-	-	-
Q3	-	-	-	-	-	-
Q4	-	-	-	-	-	-
2013 Q1	-	-	-	-	-	-
Q2	-	-	-	-	-	-
Q3	-	-	-	-	-	-
Q4	-	-	-	-	-0.1	-
2014 Q1	-	-	-	-	-	-
Q2	-	-	-	-	-	-
Q3	-	-	-	-	..	-
Q4	-	-	-	-	..	-
2015 Q1	0.1	-	-	-	..	-
Q2	-	-	-	-	..	-
Q3	-	1.2	-	-	..	-0.4
Q4
Percentage change, latest quarter on previous quarter						
2012 Q1	-	-	-	-	-	-
Q2	-	-	-	-	-	-
Q3	-	-	-	-	-	-
Q4	-	-	-	-	-	-
2013 Q1	-	-	-	-	-	-
Q2	-	-	-	-	-	-
Q3	-	-	-	-	-	-
Q4	-	-	-	-	-0.1	-
2014 Q1	-	-	-	-	0.1	-
Q2	-	-	-	-	-	-
Q3	-	-	-	-	..	-
Q4	-	-	-	-	..	-
2015 Q1	0.1	-	-	-	..	-
Q2	-0.1	-	-	-	..	-
Q3	-	1.2	-	-	..	-0.4
Q4
Percentage change, latest quarter on corresponding quarter of previous year						
2012 Q1	-	-	-	-	-	-
Q2	-	-	-	-	-	-
Q3	-	-	-	-	-	-
Q4	-	-	-	-	-	-
2013 Q1	-	-	-	-	-	-
Q2	-	-	-	-	-	-
Q3	-	-	-	-	-	-
Q4	-	-	-	-	-0.1	-
2014 Q1	-	-	-	-	-	-
Q2	-	-	-	-	-	-
Q3	-	-	-	-	..	-
Q4	-	-	-	-	..	-
2015 Q1	0.1	-	-	-	..	-
Q2	-	-	-	-	..	-
Q3	-	1.2	-	-	..	-0.4
Q4

3R Services Producer Prices Indices - Industry Revisions

continued

2010 = 100 (SIC2007)

	Education	Other Services
	Adult Education 85.59	Commercial Washing & Dry Cleaning 96.01
Annual	K8ZG	K8ZM
2012	-	-
2013	-	-
2014	-	-
2015
Percentage change, latest year on previous year		
2012	-	-
2013	-	-
2014	-	-
2015
Quarterly results (not seasonally adjusted)		
2012 Q1	-	-
Q2	-	-
Q3	-	-
Q4	-	-
2013 Q1	-	-
Q2	-	-
Q3	-	-
Q4	-	-
2014 Q1	-	-
Q2	-	-
Q3	-	-
Q4	-	-
2015 Q1	-	-
Q2	-	-
Q3	-	-
Q4
Percentage change, latest quarter on previous quarter		
2012 Q1	-	-
Q2	-	-
Q3	-	-
Q4	-	-
2013 Q1	-	-
Q2	-	-
Q3	-	-
Q4	-	-
2014 Q1	-	-
Q2	-	-
Q3	-	-
Q4	-	-
2015 Q1	-	-
Q2	-	-
Q3	-	-
Q4
Percentage change, latest quarter on corresponding quarter of previous year		
2012 Q1	-	-
Q2	-	-
Q3	-	-
Q4	-	-
2013 Q1	-	-
Q2	-	-
Q3	-	-
Q4	-	-
2014 Q1	-	-
Q2	-	-
Q3	-	-
Q4	-	-
2015 Q1	-	-
Q2	-	-
Q3	-	-
Q4