

# National Balance Sheet, 2015 Estimates



Coverage: UK

Date: 26 November 2015

Geographical Area: UK and GB

Theme: **Economy**

## Main points

- The National Balance Sheet is a measure of the wealth, or total net worth, of the UK. It shows the estimated market value of financial assets, such as loans, and non-financial assets, such as dwellings. Market value is an estimate of how much these assets would sell for, if sold on the market.
- The estimates in this release cover the period 1997 to 2014. All data referred to in this bulletin are annual estimates at current prices.
- At the end of 2014, the total net worth of the UK was estimated at £8.1 trillion. This was equivalent to an average of £125,000 per person or £302,000 per household.
- Dwellings remained the most valuable non-financial asset in the UK at £5.1 trillion, accounting for 63% of the UK's total net worth at the end of 2014. Dwellings increased in value by £408 billion (9%) over the period 2013 to 2014.
- The households and non-profit institutions serving households (NPISH) sector provided the largest increase in the total net worth of the UK in 2014. This sector increased in value by £1.03 trillion (12%) over the period 2013 to 2014.
- Financial corporations placed the largest downward pressure on the total net worth of the UK between 2013 and 2014. This can be mainly attributed to a decrease of £175 billion (16%) in their estimated financial net worth of "equity and investment fund shares/units".

## Introduction

This annual bulletin provides estimates of the market value of financial and non-financial assets in the UK for the period 1997 to 2014. The National Balance Sheet is a measure of the wealth of the UK and is available by institutional sector, for example, households and non-profit institutions

serving households (NPISH) and type of asset, for example, dwellings and loans. The data are used to monitor economic performance, to inform monetary and fiscal policy decisions and for international comparisons.

All data referred to in this bulletin are annual estimates at current prices and include changes in prices as well as in the volume of assets.

These estimates are consistent with the [2015 UK National Accounts \(The Blue Book\)](#). The dataset for this bulletin is available in the accompanying spreadsheet as well as in Chapter 9 of the Blue Book. Background notes provide information on coverage, quality and how to use the data.

The institutional sector and asset breakdown of non-financial corporations, into public non-financial corporations and private non-financial corporations are not available from the net capital stocks dataset. As a result, these data and the totals that are derived from these data are not shown in the tables accompanying this bulletin.

As part of the continuous improvement process, there are revisions to the estimates for the period 1997 to 2013; further details are available in the background notes section.

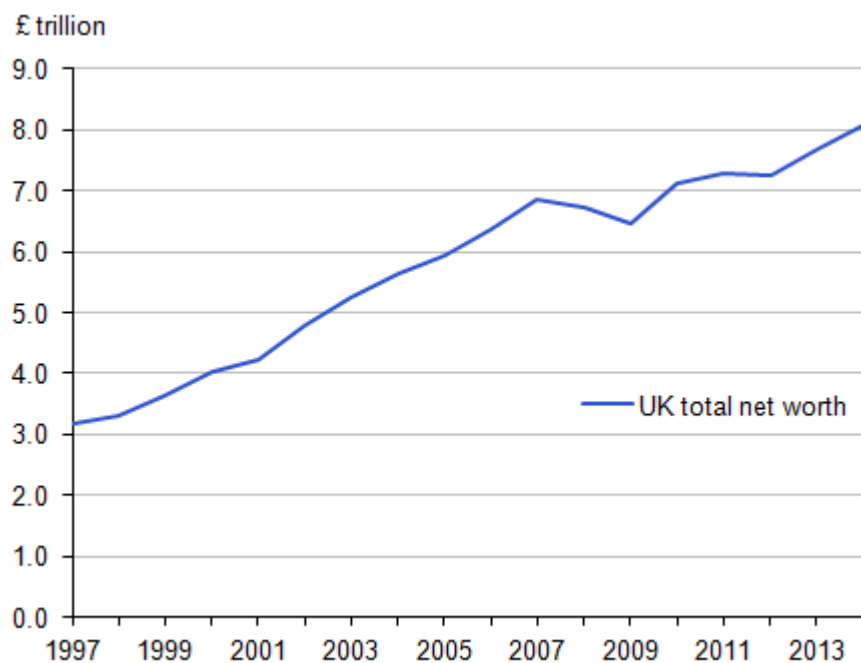
## Total net worth

Estimates of UK total net worth more than doubled in the 15 years from 1999 to 2014, at current prices. Since 1997, they have risen consistently until the economic downturn in 2008 and 2009. From 2010 onwards they have risen in most years, with the exception of 2012.

At the end of 2014, the UK was valued at an estimated £8.1 trillion, an increase of 5% (£385 billion) compared with 2013, which continued the long-term upward pattern. This is consistent with the continued growth in the value of [gross domestic product \(GDP\)](#) at current prices during 2014.

The estimated value of non-financial assets increased by £595 billion (8%) while the estimated financial net worth decreased by £210 billion (86%). The increase in the value of non-financial assets was largely due to dwellings which contributed to 63% of the UK total net worth at the end of 2014.

UK total net worth was equivalent to an average of £125,000 per person or £302,000 per household in 2014, compared with £120,000 per person or £288,000 per household in 2013.

**Figure 1: Estimated UK total net worth, 1997 to 2014**

Source: Office for National Statistics

### Download chart

[XLS](#) [XLS format](#)

(25 Kb)

## Analysis by institutional sector

### Households and non-profit institutions serving households (NPISH)

The households and NPISH sector had an estimated net worth of £9.4 trillion at the end of 2014, making it the institutional sector with the highest total net worth. This was equivalent to an average of £354,000 per household in 2014 compared with £316,000 per household in 2013.

NPISH consist of organisations such as charities, universities, churches and trade unions, which provide goods and services to households either free or at non-economically significant prices.

The most valuable assets in this sector were dwellings (£4.8 trillion; 51% of this sector's net worth), "insurance, pension and standardised guarantee schemes" (£3.5 trillion; 37%) and "currency and deposits" (£1.4 trillion; 15%).

The estimated net worth of households and NPISH increased by £1.03 trillion (12%) between 2013 and 2014, which was the largest annual increase since 2008 and the main reason for the increase in the total net worth of the UK. In comparison, the estimated total net worth of the UK only increased by £385 billion because of decreases in other sectors.

The increase in the estimated net worth of households and NPISH in 2014 resulted from increases in a number of different assets. The largest increase was in the net value of “insurance, pension and standardised guarantee schemes” which increased by £501 billion (17%) due to an increase in the asset value to £3.5 trillion compared with £3.0 trillion at the end of 2013. See background note 2 for further information. The value of dwellings saw an increase of £403 billion (9%) compared with 2013.

### **Non-financial corporations**

The non-financial corporations sector had an estimated net worth of minus £732 billion at the end of 2014, a decrease of £54 billion (8%) compared with 2013.

The non-financial sector is broken down into 2 sub-sectors: public and private. Non-financial corporations produce goods and services for final or intermediate consumption expenditure and include businesses such as retailers, manufacturers, utilities and construction companies, amongst others.

At the end 2014, the most valuable asset of non-financial corporations was “other buildings and structures” at £939 billion (45% of this sector’s total non-financial assets), which increased by £124 billion (15%) compared with £814 billion at the end of 2013.

This increase was offset by decreases of £154 billion in the net value of “insurance, pension and standardised guarantee schemes” and £133 billion in the net value of “equity and investment fund shares/units”.

### **Financial corporations**

The financial corporations sector had an estimated net worth of minus £197 billion at the end of 2014, a decrease of £364 billion (219%) compared with 2013. This was the largest annual decrease and the first negative net worth for financial corporations since 2006.

Financial corporations are institutional units whose principal activity is the production of financial services and, for example, include banks, building societies and insurance companies.

The financial net worth of financial corporations decreased by £367 billion to minus £360 billion in 2014 compared with £7 billion in 2013 and was the main contributing factor for the fall in this sector. This was a result of a decrease of £353 billion in the net value of “insurance, pension and standardised guarantee schemes” due to an increase in the liability value to £3.6 trillion in 2014 compared with £3.1 trillion in 2013.

There was also a decrease of £175 billion in the net value of “equity and investment fund shares/units”, but this was mostly offset by an increase of £158 billion in the net value of “debt securities” over the period 2013 to 2014.

### **General government**

General government continued to place downward pressure on the UK total net worth in the period 2013 to 2014. The estimated net worth of the general government sector decreased to minus £450

billion at the end of 2014, meaning that the government continued to owe more than it owned in assets.

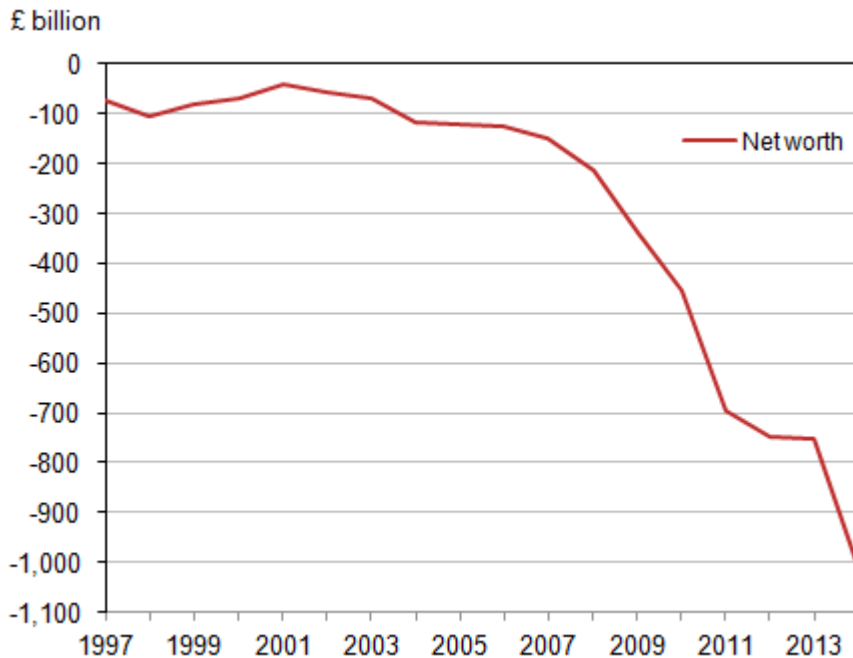
General government's estimated financial net worth decreased by £255 billion (21%) to minus £1.5 trillion in 2014 compared with minus £1.2 trillion in 2013, the largest annual decrease since 2011. This was mainly due to central government's increased liabilities in "debt securities". The most valuable non-financial asset of general government was "other buildings and structures" at £766 billion and accounted for 75% of this sector's total non-financial assets at the end of 2014.

The general government sector is broken down into 2 sub-sectors: central and local. General government includes government departments and agencies, local authorities, the armed forces, and the police, amongst other public bodies.

Central government's net worth is estimated to have declined in every year since 2001. Figure 2 shows that the estimated net worth of the central government sub-sector was minus £1,009 billion at the end of 2014. This was a decrease of 34% on the previous year and over 6 times less than its net worth in the pre-downturn period of 2007 (minus £148 billion).

**Figure 2: Central government net worth, 1997 to 2014**

UK



Source: Office for National Statistics

### Download chart

[XLS](#) [XLS format](#)

(17 Kb)

Local government's estimated net worth has increased gradually since 2002 with the exception of decreases in 2008 and 2009, during the economic downturn. At the end of 2014, the estimated net

worth of the local government sub-sector was £559 billion and this was its highest value since its peak in 2007.

## Analysis by type of asset

In this release, the focus is placed on the analysis of 5 assets:

- dwellings
- other buildings and structures
- machinery, equipment and weapons systems
- equity and investment fund shares/units
- financial derivatives and employee stock options

### Dwellings

Dwellings remained the most valuable non-financial asset in the UK. They steadily increased in value between 1997 and 2014, except for a decrease in 2008. The value of dwellings was estimated at £5.1 trillion at the end of 2014, over 3 times their estimated value in 1997 (at £1.4 trillion). The households and non-profit institutions serving households (NPISH) sector accounts for 95% of this asset's value. The increase in the value of dwellings was largely due to increases in house prices rather than a change in the volume of dwellings. Between the end of 1997 and the end of 2014, the simple average house price in the UK increased by 249% in comparison with the value of dwellings which increased by 255%.

### Other buildings and structures

The estimated value of “other buildings and structures” increased by £158 billion (9%) to £1.9 trillion in 2014 compared with £1.7 trillion in 2013. The value of these assets accounted for 24% of the UK's total net worth at the end of 2014. “Other buildings and structures” includes non-residential buildings such as warehouses as well as other structures such as roads, railways, pipelines, bridges and sports stadiums.

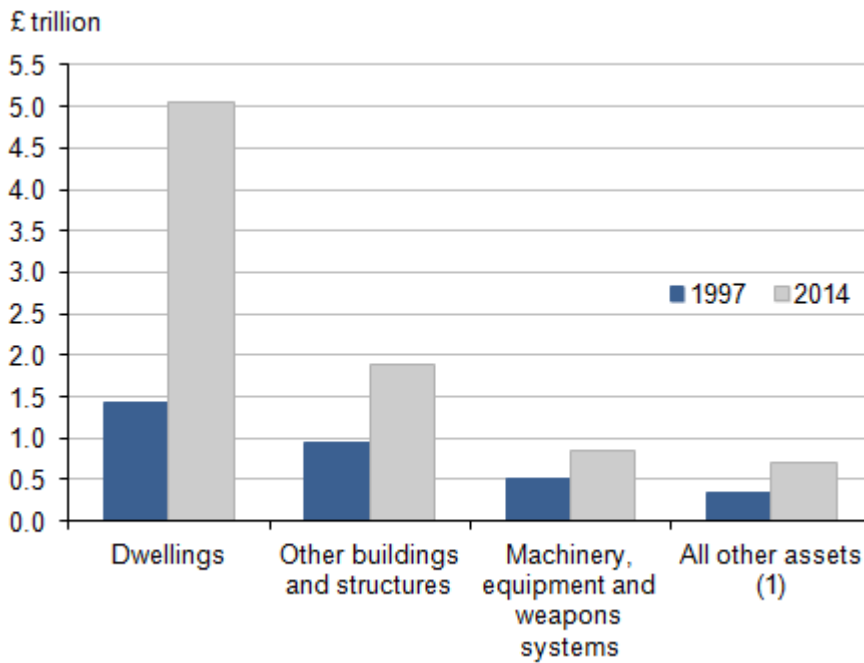
The estimated value of “other buildings and structures” has increased each year since 1997 with the exception of 2008, 2009 and 2012. These assets have doubled in value since 1997 from £947 billion to £1.9 trillion at the end of 2014.

### Machinery, equipment and weapons systems

This asset group includes “transport equipment”, “information and communication technology (ICT) equipment” and “other machinery, equipment and weapons systems” and had an estimated net worth of £850 billion at the end of 2014, an increase of £6 billion since 2013. The value of these assets accounted for 11% of the UK's total net worth at the end of 2014. There has been steady growth in the value of these assets since 1997 with the exception of 2013 which was relatively flat. This group has grown more slowly since 2009 than the other groups of non-financial assets in Figure 3.

**Figure 3: Value of non-financial assets, 1997 and 2014**

UK



Source: Office for National Statistics

**Notes:**

1. All other assets include cultivated biological resources, intellectual property products, inventories and non-produced assets.

**Download chart**
[XLS](#) [XLS format](#)

(25 Kb)

**Equity and investment fund shares/units**

Equity and investment fund shares/units relate to the issuance and holdings of listed and unlisted shares, other UK equity and mutual funds units/shares. In 2014 the estimated net worth of these assets fell by £218 billion (71%) to £90 billion in 2014 compared with £308 billion in 2013. This was the largest annual decrease since 1997. The decrease in the total financial net worth of the UK was largely due to the change in the net value of these assets. This is a result of the asset value decreasing with a corresponding increase in the liability value of “equity and investment fund shares/units” in both the financial corporations and private non-financial corporations sectors.

**Financial derivatives and employee stock options**

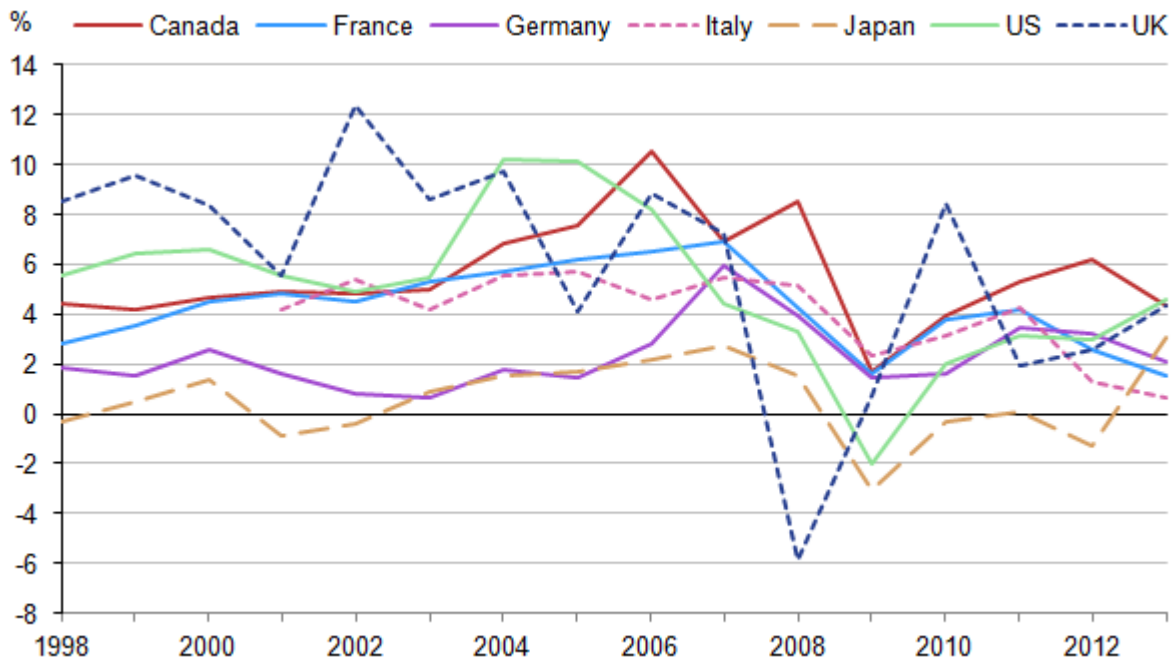
A derivative is a contract between 2 parties whose value is derived from 1 or more underlying assets, commodities or currency. Derivatives are in general either used to hedge risks or to speculate on changes in prices. Activity in these types of financial products often increase at times of uncertainty with the financial markets. The estimated net worth of “financial derivatives and

employee stock options” decreased by £25 billion (53%) to £22 billion in 2014 compared with £48 billion in 2013. They however, remain at a level that is higher than their value in 2007 (minus £14 billion) which may reflect the continuing economic uncertainty.

## International comparison

In this section, the net worth of the UK is compared with the net worth of the other G7 countries. Estimates for non-produced assets and inventories, and hence net worth, were not available for all the countries shown. Figures 4 and 5 therefore show the produced fixed assets for these countries.

**Figure 4: Year on year growth rates of produced fixed assets for the G7 countries, 1997 to 2013**



Source: Office for National Statistics, Organisation for Economic Co-operation and Development

### Notes:

1. Data are only available to 2013 and not available for Italy for the period 1998 to 2000.

### Download chart

[XLS](#) [XLS format](#)

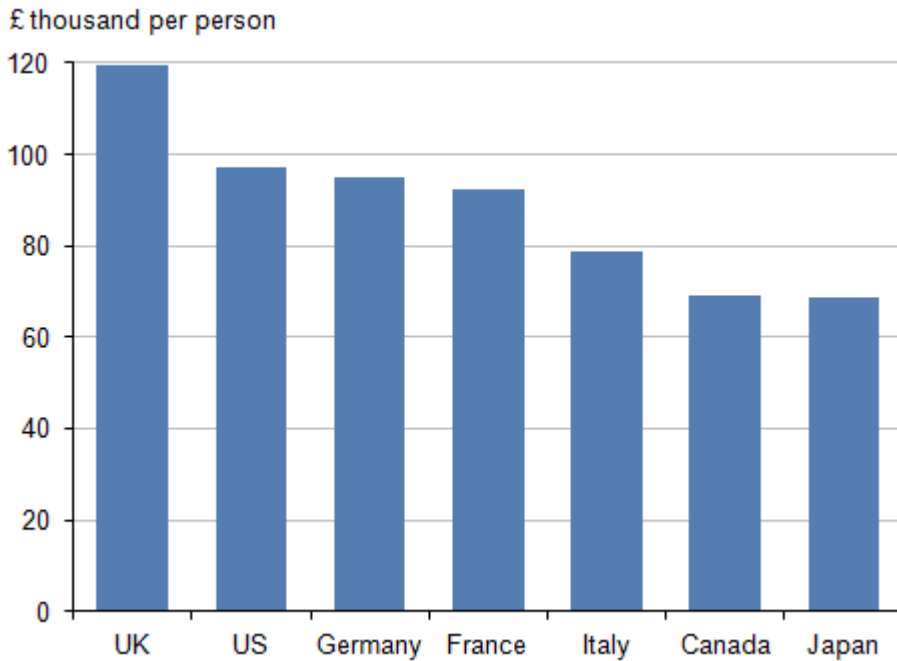
(27.5 Kb)

Figure 4 shows as of the end of 2013, all G7 countries had returned to positive growth after the economic downturn of 2008 and 2009. In comparison with other G7 countries, the UK exhibited strong growth in produced fixed assets at 4.3%, above the G7 average of 2.9%, over the period 2012 to 2013. However, in 2008 the UK had the largest fall in the value of produced fixed assets for



any country over the entire time period. At the end of 2013, the US had the highest growth rate for produced fixed assets at 4.6%.

**Figure 5: Produced fixed assets per thousand pounds per person for the G7 countries, 2013**



Source: Office for National Statistics, Organisation for Economic Co-operation and Development

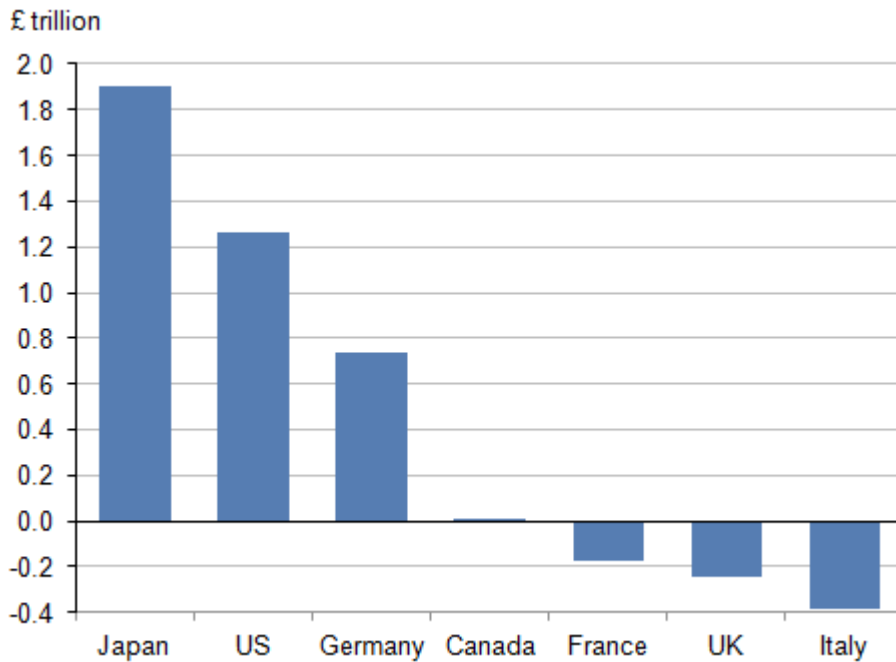
**Notes:**

1. Data are only available to 2013.
2. Data has been converted to pounds sterling using exchange rates as at 31 December 2013.

**Download chart**

[XLS](#) [XLS format](#)  
(25 Kb)

Figure 5 shows the value of produced fixed assets of the G7 economies per person in pounds sterling. The UK had the highest estimate per person at £119,000 at the end of 2013 whilst Japan had the lowest at £69,000 per person at the end of 2013.

**Figure 6: Financial net worth of the G7 countries, 2013**

Source: Office for National Statistics, Organisation for Economic Co-operation and Development

**Notes:**

1. Data are only available to 2013.
2. Data has been converted to pounds sterling using exchange rates as at 31 December 2013.

**Download chart**

[XLS](#) [XLS format](#)

(25 Kb)

A positive financial net worth means that the values of the financial assets outweigh the value of the liabilities. Figure 6 shows the financial net worth of the G7 economies at the end of 2013 converted to pounds sterling. Japan had the highest financial net worth at £1.9 trillion, while Italy had the lowest at minus £0.4 trillion. At the end of 2013, the UK, Italy and France had negative financial net worth, meaning that their total liabilities are greater than their total assets.

## Summary tables

**Table 1: Estimated UK total net worth by sector, 2014**

Sector	£ billion Net worth
Households and NPISH <sup>1</sup>	9,443
Non-financial corporations	-732
Financial corporations	-197
General government	-450
Of which: Central government	-1,009
Of which: Local government	559
<b>Total<sup>2</sup></b>	<b>8,063</b>

**Table source:** Office for National Statistics

**Table notes:**

1. NPISH stands for non-profit institutions serving households.
2. Figures may not sum to totals due to rounding.

**Download table**

**XLS** [XLS format](#)

(17 Kb)

**Table 2: Value of financial assets and liabilities, 2014**

UK

£ billion

Financial asset	Asset value	Liability value	Net value
Monetary gold and special drawing rights	17	9	7
Currency and deposits	6,113	6,215	-102
Debt securities	3,783	3,971	-188
Loans	4,176	4,455	-279
Equity and investment fund shares/units	4,563	4,473	90
Insurance, pension and standardised guarantee schemes	4,341	4,356	-15
Financial derivatives and employee stock options	6,109	6,086	22
Other accounts receivable/payable	439	429	10
<b>Total<sup>1</sup></b>	<b>29,541</b>	<b>29,995</b>	<b>-454</b>

**Table source:** Office for National Statistics

**Table notes:**

1. Figures may not sum to totals due to rounding.

**Download table**

[XLS](#) [XLS format](#)

(18 Kb)

**Background notes**

**1. General information**

In addition to the information below, further information is available in the [non-financial balance sheet quality report](#).

The National Balance Sheet dataset was published in Chapter 9 of the [2015 UK National Accounts \(The Blue Book\)](#).

The estimates in this release cover the period 1997 to 2014. All data referred to in this bulletin are annual estimates at current prices and include changes in prices as well as in the volume of assets.

The population estimates of 64.6 million for 2014 and 64.1 million for 2013 used to derive net worth per person are consistent with the [Mid-year Population Estimates for the UK](#).

The household estimates of 26.7 million for 2014 and 26.7 million for 2013 used to derive net worth per household are consistent with the [Families and Households Estimates for the UK](#).

Data on simple average house prices comes from taking the Quarter 4 (October to December) data from Table 11 “Simple average house prices, by new/other dwellings, type of buyer and region, UK” from the [House Price Index dataset](#).

The net worth estimates of the UK economy exclude “human capital”, that is, the value of knowledge, skills and know-how, and “environmental or natural capital”. Further information on [human capital](#) is available from our website.

## 2. What’s new?

The National Balance Sheet estimates are consistent with the net capital stocks estimates due to be published in the [Capital Stocks and Consumption of Fixed Capital statistical release](#) on 1 December 2015.

A number of improvements and changes to the methodology for estimating capital stocks and the consumption of fixed capital have led to revisions to the National Balance Sheet. These changes were presented in the article [methodological changes to the estimation of capital stocks and consumption of fixed capital \(269.4 Kb Pdf\)](#) on 11 September 2015 and can be summarised as:

- review of the linking of pre-1997 (“historic”) gross fixed capital formation (GFCF) estimates
- review of deflator linking between 1996 and 1997
- implementing improved deflators for assets “Software and Databases” and “Mineral Exploration”
- re-classification of Network Rail from private non-financial corporation to central government
- estimates for public corporations and NPISH institutional sectors are forecast from 2013 onwards, as opposed to coming from the perpetual inventory model (PIM)

Revisions to gross fixed capital formation (GFCF):

- improvements made for survey under coverage and other GFCF changes as outlined in the [GFCF and business investment article \(623.6 Kb Pdf\)](#)

Data changes:

- alignment with GFCF – using GFCF consistent with Blue Book 2015

An assessment of the impact of these changes are due to be presented in the article impact of the methodological changes to the estimation of capital stocks and consumption of fixed capital published alongside the [Capital Stocks and Consumption of Fixed Capital statistical release](#) on 1 December 2015.

The 3G and 4G electro-magnetic spectrums are no longer classified as non-produced assets in radio spectra. The impact of this change decreases the estimated UK total net worth by £22.5 billion a year over the period 2000 to 2012 and by £24.8 billion in 2013.

Details of methodological improvements introduced in Blue Book 2015 affecting “insurance, pension and standardised guarantee schemes” are provided in the [impact of changes article published on 30 September 2014 \(814.6 Kb Pdf\)](#) and the [impact of changes article published on 30 September 2015. \(373.7 Kb Pdf\)](#)

The next publication of Capital Stocks and Consumption of Fixed Capital will be published in August 2016 and will contain estimates back to 1995, hence, the next publication of the National Balance Sheet, also in August 2016, will contain estimates back to 1995.

### 3. Understanding the data

#### Short guide to the national balance sheet

The national balance sheet data presents the estimated market value of financial and non-financial assets, that is, what these assets would realise if sold at market value.

Non-financial assets include both produced and non-produced, non-financial assets.

Produced non-financial assets include:

- dwellings
- other buildings and structures
- machinery and equipment
- weapons systems
- cultivated biological resources
- transport equipment
- intellectual property products
- inventories

Non-produced non-financial assets:

- radio spectra
- cherished or personalised vehicle registration plates

Financial assets include:

- means of payment, such as currency
- financial claims, such as loans

- economic assets, which are close to financial claims in nature, such as shares

#### 4. Interpreting the data

##### International Financial Reporting Standards

The [International Financial Reporting Standards](#) (IFRS) were introduced from 2005 onwards in the UK. IFRS is the legally required financial reporting framework for the consolidated accounts of EU-listed groups of companies. IFRS differs in some respects from the UK financial reporting standards (UK GAAP).

The impact on the national balance sheet is difficult to assess as the impact of the transition to IFRS varies by company. Our subsequent work provided little evidence that material differences would occur as a result of the transition. On this basis, the transition to IFRS should not prevent time series analysis of the national balance sheet dataset.

#### 5. Use of the data

The national balance sheet estimates are used in private and public sector institutions, the Statistical Office of the European Communities (Eurostat), Bank of England and Her Majesty's Treasury. The data are used to monitor economic performance, inform monetary and fiscal policy decisions as well as for international comparisons.

#### 6. Comparability

The UK produces the national balance sheet to the international standards set out in in the [European System of Accounts \(ESA 2010\)](#).

Both [Eurostat](#) and the [Organisation for Economic Co-operation and Development \(OECD\)](#) hold internationally comparable data for both financial and non-financial balance sheets. When comparing between countries, users should ensure that they are comparing figures in the same currency and that there are no definitional differences noted. This is especially important as different countries adopt ESA10 changes in different years.

The Wealth and Assets Survey (WAS) is a longitudinal household survey, which gathers information on, among other things, level of savings and debt, saving for retirement, how wealth is distributed among households and factors that affect financial planning. WAS produces estimates of the wealth of the household sector and of property wealth within this sector. The National Balance Sheet (NBS) produces estimates for the households and non-profit institutions serving households (NPISH) sector which includes data on dwellings.

These estimates are different because:

- NBS shows data for the UK, whereas WAS only covers Great Britain
- WAS uses a sample survey of households, whereas NBS uses administrative data sources, for example on house prices

- the estimate of property prices may be higher in the WAS as the price is based on the perception of the person answering the survey compared with actual selling prices which are used in the NBS estimates
- WAS includes overseas property owned by GB residents and includes the value of land, whereas NBS only covers dwellings and assets in the UK and does not include estimates for the value of land
- the WAS includes the estimated value of the contents of houses, such as washing machines, computers, furnishings, etc., whereas this is not included in the NBS
- the WAS estimates data for informal financial arrangements, such as loans between family members, which are not included in the NBS

More information on the methods as well as the [data for the Wealth and Assets Survey](#) is available on our website.

## 7. Data sources

Data sources for the compilation of the national balance sheet include:

- administrative data from other government departments and agencies
- annual reports of public corporations and major businesses
- industry publications
- Chartered Institute of Public Finance and Accountancy report on local authority assets

For central government, data are taken from returns made by government departments to HM Treasury.

For financial assets and liabilities, data is consistent with the financial balance sheets published for each institutional sector in the [2015 UK National Accounts \(The Blue Book\)](#).

Net capital stocks estimates for the produced fixed assets of “ICT equipment”, “other machinery, equipment and weapons systems” and “intellectual property products” are taken directly from the Capital Stocks and Consumption of Fixed Capital dataset due to be published on 1 December 2015.

## 8. Revisions

There are several revisions to the estimates for 2013 due to more up-to-date data being available since the last publication. There are also revisions to the estimates for 1997 to 2013 as a result of implementing methodological changes for estimating capital stocks and consumption of fixed capital. This is detailed above in background note 2 along with the impact of these revisions.

A full explanation of the [national accounts revisions policy \(41.6 Kb Pdf\)](#) is available on our website.

## 9. Future work plan



There are a number of improvements planned for estimates of capital stocks and the consumption of fixed capital which will have an impact on the National Balance Sheet estimates in future releases. We have included these improvements in our future development plan for non-financial assets and will keep users informed as this work progresses.

### **The production of estimates for general, central and local government using a new methodology**

As a consequence of timetable constraints, we have has been unable to fully implement the new methodology to produce estimates using the PIM for the central and local Government sub-sectors. As a result, the sector totals used in the previous publication in 2010 have been maintained and the estimates for 2010 to 2014 have been forecast for these sectors based on historic trends. A main input to the estimates of capital stocks and the consumption of fixed capital are gross fixed capital formation (GFCF) investment estimates which come from sample surveys and administrative sources. This means that any updates to gross fixed capital formation (GFCF) for these sectors are not reflected in this release. All other sectors have been produced using the new methods. Due to other development priorities within our non-financial assets branch, it has not been possible to improve the methods for calculation of these sectors.

### **Providing an asset breakdown for institutional sectors**

It is not at present possible to provide an asset breakdown for non-financial corporations, into public non-financial corporations and private non-financial corporations due to the requirement for additional quality assurance of the asset breakdowns.

### **Fully introducing new data for non-profit Institutions serving households (NPISH) and public non-financial corporations**

NPISH data from the perpetual inventory model (PIM) were fixed at an early stage of the production process between 1997 and 2012 due to deliveries required to meet the Blue Book 2014 timetable. NPISH estimates have not been re-calculated by the PIM since this time, apart from the year 2013, they have been forecast since. Public non-financial corporations data from the PIM was fixed following the Blue Book 2014 publication and forecast since this time. Therefore these institutional sectors are inconsistent with outputs for other non-government sectors and updates to gross fixed capital formation (GFCF) for these sectors are not reflected in this release.

## **10. What do you think?**

We are striving to improve this release and its associated commentary. We would welcome any feedback you may have, and would be particularly interested in knowing how you make use of these data to inform your work. Please contact us via email: [gcf@ons.gsi.gov.uk](mailto:gcf@ons.gsi.gov.uk) or telephone Stephanie Duff on +44 (0)1633 455250.

There is a [Business and Trade Statistics](#) community on the StatsUserNet website. [StatsUserNet](#) is the Royal Statistical Society's interactive site for users of official statistics. The community objectives are to promote dialogue between users and producers of official business and trade

statistics about the structure, content and performance of businesses within the UK. Anyone can join the discussions by registering via either of the links above.

## 11. National Statistics

The [UK Statistics Authority](#) has designated these statistics as National Statistics, signifying compliance with the [Code of Practice for Official Statistics](#).

Designation can be broadly interpreted to mean that the statistics:

- meet identified user needs
- are well explained and readily accessible
- are produced according to sound methods
- are managed impartially and objectively in the public interest

Once statistics have been designated as National Statistics it is a statutory requirement that the Code of Practice shall continue to be observed.

## 12. Social media

Follow us on [Twitter](#) and receive up to date information about our statistics.

Like us on [Facebook](#) to receive our updates in your newsfeed and to post comments on our page.

## 13. Government Statistical Service (GSS) business statistics

To find out about other official business statistics, and choose the right data for your needs, use the [GSS Business Statistics Interactive User Guide](#). By selecting your topics of interest, the tool will pinpoint publications that should be of interest to you, and provide you with links to more detailed information and the relevant statistical releases. It also offers guidance on which statistics are appropriate for different uses.

## 14. Special events

We have published commentary, analysis and policy on “Special Events” which may affect statistical outputs. For full details visit the [Special Events](#) page on our website.

## 15. Release policy

All data in this release can be downloaded free of charge from our website. Here are the instructions to obtain a full time series of data from the statistical bulletin or release pages:

select “Data in this release”

select “View datasets associated with this release”

select the latest release

select “Select series from this dataset”

select the reference table of interest

select "View series"

select the series of interest (Hint: for a custom download you can use SHIFT to select a range of series or CTRL to select multiple individual series)

select "View selection"

select "Download"

16. Details of the policy governing the release of new data are available by visiting [www.statisticsauthority.gov.uk/assessment/code-of-practice/index.html](http://www.statisticsauthority.gov.uk/assessment/code-of-practice/index.html) or from the Media Relations Office email: [media.relations@ons.gsi.gov.uk](mailto:media.relations@ons.gsi.gov.uk)

## Copyright

© Crown copyright 2015

You may use or re-use this information (not including logos) free of charge in any format or medium, under the terms of the Open Government Licence. To view this licence, visit [www.nationalarchives.gov.uk/doc/open-government-licence/](http://www.nationalarchives.gov.uk/doc/open-government-licence/) or write to the Information Policy Team, The National Archives, Kew, London TW9 4DU, or email: [psi@nationalarchives.gsi.gov.uk](mailto:psi@nationalarchives.gsi.gov.uk).

This document is also available on our website at [www.ons.gov.uk](http://www.ons.gov.uk).

## Statistical contacts

Name	Phone	Department	Email
Stephanie Duff	+44 (0)1633 455250	Non-financial Assets Branch	<a href="mailto:gcf@ons.gsi.gov.uk">gcf@ons.gsi.gov.uk</a>

### Issuing Body:

Office for National Statistics

### Media Contact Details:

Telephone: 0845 604 1858  
(8.30am-5.30pm Weekdays)

Emergency out of hours (limited service): 07867 906553

Email:

[media.relations@ons.gsi.gov.uk](mailto:media.relations@ons.gsi.gov.uk)

## National Balance Sheet

All tables at current prices

[Enquiries](#)

<a href="#">Table A</a>	<a href="#">National Balance Sheet: Total net worth at start of 2014 by asset and sector</a>
<a href="#">Table B</a>	<a href="#">National Balance Sheet: Change in total net worth during 2014 by asset and sector</a>
<a href="#">Table C</a>	<a href="#">National Balance Sheet: Total net worth at end of 2014 by asset and sector</a>
<a href="#">Table D</a>	<a href="#">National Balance Sheet: Code lookup by asset and sector</a>
<a href="#">Table 1</a>	<a href="#">National Balance Sheet: UK total net worth by sector and year</a>
<a href="#">Table 2</a>	<a href="#">National Balance Sheet: UK total net worth by asset and year</a>
<a href="#">Table 3</a>	<a href="#">Non-Financial Corporations: Total net worth by asset and year</a>
<a href="#">Table 4</a>	<a href="#">Public Non-Financial Corporations: Total net worth by asset and year</a>
<a href="#">Table 5</a>	<a href="#">Private Non-Financial Corporations: Total net worth by asset and year</a>
<a href="#">Table 6</a>	<a href="#">Financial Corporations: Total net worth by asset and year</a>
<a href="#">Table 7</a>	<a href="#">General Government: Total net worth by asset and year</a>
<a href="#">Table 8</a>	<a href="#">Central Government: Total net worth by asset and year</a>
<a href="#">Table 9</a>	<a href="#">Local Government: Total net worth by asset and year</a>
<a href="#">Table 10</a>	<a href="#">Households &amp; Non-Profit Institutions Serving Households (NPISH): Total net worth by asset and year</a>
<a href="#">Table 11</a>	<a href="#">Public Sector: Total net worth by asset and year<sup>1</sup></a>

### Notes

1. Totals may not sum due to rounding.
2. Due to the differences in the method of rounding, there may be a small number of cases when the figures published in this spreadsheet differ by +/-0.1 from those published in the annual Blue Book publication.

### Symbols

The following symbols are used throughout:

- .. = not available
- = nil or less than a million



**Next publication:** August 2016

**Issued by:** Office for National Statistics, Government Buildings, Cardiff Road, Newport, NP10 8XG

**Media contact:**

Tel           Media Relations Office +44 (0)845 6041858  
                  Emergency on-call +44 (0)7867 906553  
Email         [press.office@ons.gsi.gov.uk](mailto:press.office@ons.gsi.gov.uk)

**Statistical contact:**

Name         Stephanie Duff  
Tel           +44 (0)1633 455250  
Email         [gcf@ons.gsi.gov.uk](mailto:gcf@ons.gsi.gov.uk)

**Contact us:**

Tel           +44 (0)845 601 3034  
Email         [info@ons.gsi.gov.uk](mailto:info@ons.gsi.gov.uk)  
Website      [www.ons.gov.uk](http://www.ons.gov.uk)  
Twitter      [www.twitter.com/ONS](http://www.twitter.com/ONS)

[Back to Contents](#)

**Table A National Balance Sheet: Total net worth at start of 2014 by asset and sector**  
**At Current Prices**

	3	4	5	6	7	8	9	10	11	£ million
	Non-Financial Corporations	Public Non-Financial Corporations	Private Non-Financial Corporations	Financial Corporations	General Government	Central Government	Local Government	Households & NPISH	Public Sector	1, 2
<b>Non-financial assets</b>										
<b>Produced non-financial assets</b>										
AN.11 Fixed assets	1,699,668	..	..	158,898	987,925	464,464	523,461	4,804,413	..	7,650,904
AN.111 Dwellings <sup>1</sup>	209,181	83,963	125,218	3,319	15,343	15,343	-	4,425,818	99,306	4,653,661
AN.112 Other buildings and structures <sup>1</sup>	814,232	56,655	757,577	121,402	739,806	296,247	443,559	64,364	796,461	1,739,804
AN.1121 Buildings other than dwellings <sup>1</sup>	373,631	28,820	344,811	121,402	267,582	115,436	152,146	62,224	296,402	824,839
AN.1122 Other structures <sup>2</sup>	440,601	27,835	412,766	-	472,224	180,811	291,413	2,140	500,059	914,965
AN.1134-114 Machinery, equipment and weapons systems	514,349	..	..	20,686	199,321	133,816	65,505	109,651	..	844,007
AN.1131 Transport equipment	98,035	3,662	94,373	535	12,542	10,041	2,501	73,393	16,204	184,505
AN.1132 ICT equipment	13,391	..	..	3,933	12,284	549	11,735	2,530	..	32,138
AN.1139-114 Other machinery, equipment and weapons systems	402,923	..	..	16,218	174,495	123,226	51,269	33,728	..	627,364
AN.115 Cultivated biological resources <sup>1</sup>	14,723	3,724	10,999	3,566	7,895	100	7,795	192,848	11,619	219,032
AN.117 Intellectual property products <sup>2</sup>	147,183	..	..	9,925	25,560	18,958	6,602	11,732	..	194,400
AN.12 Inventories	244,000	5,723	238,277	406	652	652	-	24,031	6,375	269,089
AN.1 Total produced non-financial assets	1,943,668	..	..	159,304	988,577	465,116	523,461	4,828,444	..	7,919,993
<b>Non-produced non-financial assets</b>										
AN.21 Natural resources <sup>3</sup>	-	-	-	-	-	-	-	-	-	-
AN.2151 Radio spectra <sup>4</sup>	-	-	-	-	-	-	-	-	-	-
AN.22 Contracts, leases and licences <sup>3</sup>	-	-	-	-	-	-	-	2,372	-	2,372
AN.223 Permits to undertake specific activities <sup>5</sup>	-	-	-	-	-	-	-	2,372	-	2,372
AN.2 Total non-produced non-financial assets	-	-	-	-	-	-	-	2,372	-	2,372
<b>AN Total non-financial assets</b>	<b>1,943,668</b>	<b>..</b>	<b>..</b>	<b>159,304</b>	<b>988,577</b>	<b>465,116</b>	<b>523,461</b>	<b>4,830,816</b>	<b>..</b>	<b>7,922,365</b>
<b>Financial assets and liabilities</b>										
<b>Financial assets</b>										
AF.1 Monetary gold and special drawing rights	-	-	-	-	16,267	16,267	-	-	16,267	16,267
AF.2 Currency and deposits	506,400	7,097	499,303	4,443,220	87,435	56,372	31,063	1,357,085	94,532	6,394,140
AF.3 Debt securities	52,088	1,421	50,667	3,198,920	52,299	47,356	4,943	81,345	53,720	3,384,652
AF.4 Loans	331,612	1,410	330,202	3,733,887	206,232	193,955	12,277	18,688	207,642	4,290,419
AF.5 Equity and investment fund shares/units	791,327	1,643	789,684	3,037,490	194,780	70,655	124,125	575,987	196,423	4,599,584
AF.6 Insurance, pension and standardised guarantee schemes	4,029	-	4,029	651,685	674	-	674	2,999,197	674	3,655,585
AF.7 Financial derivatives and employee stock options	25,622	-	25,622	5,487,323	2,938	2,938	-	8,613	2,938	5,524,496
AF.8 Other accounts receivable/payable	115,681	11,484	104,197	62,039	85,208	85,620	-412	171,715	96,692	434,643
AF.A Total financial assets	1,826,759	23,055	1,803,704	20,614,564	645,833	473,163	172,670	5,212,630	668,888	28,299,784
<b>Financial liabilities</b>										
AF.1 Monetary gold and special drawing rights	-	-	-	-	9,450	9,450	-	-	9,450	9,450
AF.2 Currency and deposits	-	-	-	6,418,411	127,528	127,528	-	-	127,528	6,545,939
AF.3 Debt securities	381,398	25,134	356,264	1,672,216	1,489,016	1,485,353	3,663	1,667	1,514,150	3,544,297
AF.4 Loans	1,021,699	8,226	1,013,473	1,943,488	93,652	9,742	83,910	1,523,840	101,878	4,582,679
AF.5 Equity and investment fund shares/units	2,331,590	124,697	2,206,893	1,959,874	-	-	-	-	124,697	4,291,464
AF.6 Insurance, pension and standardised guarantee schemes	501,581	-	501,581	3,073,044	63,253	-	63,253	32,759	63,253	3,670,637
AF.7 Financial derivatives and employee stock options	40,359	-	40,359	5,430,982	1,259	1,259	-	4,220	1,259	5,476,820
AF.8 Other accounts receivable/payable	172,260	14,410	157,850	109,390	73,276	56,967	16,309	67,585	87,686	422,511
AF.L Total financial liabilities	4,448,887	172,467	4,276,420	20,607,404	1,857,434	1,690,299	167,135	1,630,071	2,029,901	28,543,800
<b>BF.90 Financial net worth</b>	<b>-2,622,128</b>	<b>-149,412</b>	<b>-2,472,716</b>	<b>7,160</b>	<b>-1,211,601</b>	<b>-1,217,136</b>	<b>5,535</b>	<b>3,582,559</b>	<b>-1,361,013</b>	<b>-244,016</b>
<b>B.90 Total net worth</b>	<b>-678,460</b>	<b>..</b>	<b>..</b>	<b>166,464</b>	<b>-223,024</b>	<b>-752,020</b>	<b>528,996</b>	<b>8,413,375</b>	<b>..</b>	<b>7,678,349</b>

<sup>1</sup> Includes the value of the land underneath the assets.

<sup>2</sup> Formerly intangible fixed assets.

<sup>3</sup> Formerly intangible non-produced assets.

<sup>4</sup> The 3G and 4G spectrums are no longer classified as assets.

<sup>5</sup> Includes cherished or personalised vehicle registration plates.

**Table B National Balance Sheet: Change in total net worth during 2014 by asset and sector**
**At Current Prices**

	3	4	5	6	7	8	9	10	11	£ million
	Non-Financial Corporations	Public Non-Financial Corporations	Private Non-Financial Corporations	Financial Corporations	General Government	Central Government	Local Government	Households & NPISH	Public Sector	Total Economy
<b>Non-financial assets</b>										
<b>Produced non-financial assets</b>										
AN.11 Fixed assets	139,657	..	..	2,912	28,296	7,016	21,280	409,617	..	580,482
AN.111 Dwellings <sup>1</sup>	6,827	-5,164	11,991	-753	-1,256	-1,256	-	403,353	-6,420	408,171
AN.112 Other buildings and structures <sup>1</sup>	124,339	5,097	119,242	2,026	26,113	4,648	21,465	5,117	31,210	157,595
AN.1121 Buildings other than dwellings <sup>1</sup>	106,734	1,203	105,531	2,026	11,465	5,211	6,254	5,133	12,668	125,358
AN.1122 Other structures <sup>1</sup>	17,605	3,894	13,711	..	14,648	-563	15,211	-16	18,542	32,237
AN.113+114 Machinery, equipment and weapons systems	4,899	..	..	1,398	4,775	4,396	379	-5,464	..	5,608
AN.1131 Transport equipment	7,379	359	7,020	515	708	453	255	-6,349	1,067	2,253
AN.1132 ICT equipment	2,965	..	..	727	-72	-5	-67	477	..	4,097
AN.1139+114 Other machinery, equipment and weapons systems	-5,445	..	..	156	4,139	3,948	191	408	..	-742
AN.115 Cultivated biological resources <sup>1</sup>	321	159	162	121	257	0	257	6,244	416	6,943
AN.117 Intellectual property products <sup>2</sup>	3,271	..	..	120	-1,593	-772	-821	367	..	2,165
AN.12 Inventories	13,788	126	13,662	61	-60	-60	-	850	66	14,639
AN.1 Total produced non-financial assets	153,445	..	..	2,973	28,236	6,956	21,280	410,467	..	595,121
<b>Non-produced non-financial assets</b>										
AN.21 Natural resources <sup>3</sup>	-	-	-	-	-	-	-	-	-	-
AN.2151 Radio spectra <sup>4</sup>	-	-	-	-	-	-	-	-	-	-
AN.22 Contracts, leases and licences <sup>3</sup>	-	-	-	-	-	-	-	135	-	135
AN.223 Permits to undertake specific activities <sup>5</sup>	-	-	-	-	-	-	-	135	-	135
AN.2 Total non-produced non-financial assets	-	-	-	-	-	-	-	135	-	135
AN Total non-financial assets	153,445	..	..	2,973	28,236	6,956	21,280	410,602	..	595,256
<b>Financial assets and liabilities</b>										
<b>Financial assets</b>										
AF.1 Monetary gold and special drawing rights	-	-	-	-	410	410	-	-	410	410
AF.2 Currency and deposits	11,794	-445	12,239	-351,531	2,603	1,599	1,004	56,017	2,158	-281,117
AF.3 Debt securities	38,483	-11	38,494	336,937	6,138	4,524	1,614	17,243	6,127	398,801
AF.4 Loans	405	-33	438	-118,537	3,616	2,626	990	57	3,583	-114,459
AF.5 Equity and investment fund shares/units	-50,047	37	-50,084	-75,850	5,108	1,869	3,239	84,312	5,145	-36,477
AF.6 Insurance, pension and standardised guarantee schemes	-49	-	-49	174,512	-8	-	-8	510,982	-8	685,437
AF.7 Financial derivatives and employee stock options	4,354	-	4,354	582,318	-843	-843	-	-1,766	-843	584,063
AF.8 Other accounts receivable/payable	-2,010	65	-2,075	-2,259	4,766	4,358	408	3,581	4,831	4,078
AF.A Total financial assets	2,930	-387	3,317	545,590	21,790	14,543	7,247	670,426	21,403	1,240,736
<b>Financial liabilities</b>										
AF.1 Monetary gold and special drawing rights	-	-	-	-	-44	-44	-	-	-44	-44
AF.2 Currency and deposits	-	-	-	-348,585	17,451	17,451	-	-	17,451	-331,134
AF.3 Debt securities	-15,434	581	-16,015	179,426	262,548	262,042	506	559	263,129	427,099
AF.4 Loans	-24,942	337	-25,279	-146,040	2,414	-246	2,660	40,796	2,751	-127,772
AF.5 Equity and investment fund shares/units	82,765	2,466	80,299	98,802	-	-	-	-	2,466	181,567
AF.6 Insurance, pension and standardised guarantee schemes	154,148	-	154,148	527,516	-6,357	-	-6,357	10,068	-6,357	685,375
AF.7 Financial derivatives and employee stock options	10,558	-	10,558	600,500	-150	-150	-	-1,378	-150	609,530
AF.8 Other accounts receivable/payable	3,240	-333	3,573	880	1,081	-592	1,673	1,045	748	6,246
AF.L Total financial liabilities	210,335	3,051	207,284	912,500	276,943	278,461	-1,518	51,090	279,994	1,450,864
BF.90 Financial net worth	-207,405	-3,438	-203,967	-366,910	-255,153	-263,918	8,765	619,336	-258,591	-210,128
B.90 Total net worth	-53,960	..	..	-363,937	-226,917	-256,962	30,045	1,029,938	..	385,128

<sup>1</sup> Includes the value of the land underneath the assets.

<sup>2</sup> Formerly Intangible fixed assets.

<sup>3</sup> Formerly Intangible non-produced assets.

<sup>4</sup> The 3G and 4G spectrums are no longer classified as assets.

<sup>5</sup> Includes cherished or personalised vehicle registration plates.

**Table C National Balance Sheet: Total net worth at end of 2014 by asset and sector**  
**At Current Prices**

	3	4	5	6	7	8	9	10	11	£ million
	Non-Financial Corporations	Public Non-Financial Corporations	Private Non-Financial Corporations	Financial Corporations	General Government	Central Government	Local Government	Households & NPISH	Public Sector	1, 2
<b>Non-financial assets</b>										
<b>Produced non-financial assets</b>										
AN.11 Fixed assets	1,839,325	..	..	161,810	1,016,221	471,480	544,741	5,214,030	..	8,231,386
AN.111 Dwellings <sup>1</sup>	216,008	78,799	137,209	2,566	14,087	14,087	-	4,829,171	92,886	5,061,832
AN.112 Other buildings and structures <sup>1</sup>	938,571	61,752	876,819	123,428	765,919	300,895	465,024	69,481	827,671	1,897,399
AN.1121 Buildings other than dwellings <sup>1</sup>	480,365	30,023	450,342	123,428	279,047	120,647	158,400	67,357	309,070	950,197
AN.1122 Other structures <sup>1</sup>	458,206	31,729	426,477	-	486,872	180,248	306,624	2,124	518,601	947,202
AN.113+114 Machinery, equipment and weapons systems	519,248	..	..	22,084	204,096	138,212	65,884	104,187	..	849,615
AN.1131 Transport equipment	105,414	4,021	101,393	1,050	13,250	10,494	2,756	67,044	17,271	186,758
AN.1132 ICT equipment	16,356	..	..	4,660	12,212	544	11,668	3,007	..	36,235
AN.1139+114 Other machinery, equipment and weapons systems	397,478	..	..	16,374	178,634	127,174	51,460	34,136	..	626,622
AN.115 Cultivated biological resources <sup>1</sup>	15,044	3,883	11,161	3,687	8,152	100	8,052	199,092	12,035	225,975
AN.117 Intellectual property products <sup>2</sup>	150,454	..	..	10,045	23,967	18,186	5,781	12,099	..	196,565
AN.12 Inventories	257,788	5,849	251,939	467	592	592	-	24,881	6,441	283,728
AN.1 Total produced non-financial assets	2,097,113	..	..	162,277	1,016,813	472,072	544,741	5,238,911	..	8,515,114
<b>Non-produced non-financial assets</b>										
AN.21 Natural resources <sup>3</sup>	-	-	-	-	-	-	-	-	-	-
AN.2151 Radio spectra <sup>4</sup>	-	-	-	-	-	-	-	-	-	-
AN.22 Contracts, leases and licences <sup>3</sup>	-	-	-	-	-	-	-	2,507	-	2,507
AN.223 Permits to undertake specific activities <sup>5</sup>	-	-	-	-	-	-	-	2,507	-	2,507
AN.2 Total non-produced non-financial assets	-	-	-	-	-	-	-	2,507	-	2,507
AN Total non-financial assets	2,097,113	..	..	162,277	1,016,813	472,072	544,741	5,241,418	..	8,517,621
<b>Financial assets and liabilities</b>										
<b>Financial assets</b>										
AF.1 Monetary gold and special drawing rights	-	-	-	-	16,677	16,677	-	-	16,677	16,677
AF.2 Currency and deposits	518,194	6,652	511,542	4,091,689	90,038	57,971	32,067	1,413,102	96,690	6,113,023
AF.3 Debt securities	90,571	1,410	89,161	3,535,857	58,437	51,880	6,557	98,588	59,847	3,783,453
AF.4 Loans	332,017	1,377	330,640	3,615,350	209,848	196,581	13,267	18,745	211,225	4,175,960
AF.5 Equity and investment fund shares/units	741,280	1,680	739,600	2,961,640	199,888	72,524	127,364	660,299	201,568	4,563,107
AF.6 Insurance, pension and standardised guarantee schemes	3,980	-	3,980	826,197	666	-	666	3,510,179	666	4,341,022
AF.7 Financial derivatives and employee stock options	29,976	-	29,976	6,069,641	2,095	-	6,847	2,095	6,108,559	
AF.8 Other accounts receivable/payable	113,671	11,549	102,122	59,780	89,974	89,978	-4	175,296	101,523	438,721
AF.A Total financial assets	1,829,689	22,668	1,807,021	21,160,154	667,623	487,706	179,917	5,883,056	690,291	29,540,520
<b>Financial liabilities</b>										
AF.1 Monetary gold and special drawing rights	-	-	-	-	9,406	9,406	-	-	9,406	9,406
AF.2 Currency and deposits	-	-	-	6,069,826	144,979	144,979	-	-	144,979	6,214,805
AF.3 Debt securities	365,964	25,715	340,249	1,851,642	1,751,564	1,747,395	4,169	2,226	1,777,279	3,971,396
AF.4 Loans	996,757	8,563	988,194	1,797,448	96,066	9,496	86,570	1,564,636	104,629	4,454,907
AF.5 Equity and investment fund shares/units	2,414,355	127,163	2,287,192	2,058,676	-	-	-	-	127,163	4,473,031
AF.6 Insurance, pension and standardised guarantee schemes	655,729	-	655,729	3,600,560	56,896	-	56,896	42,827	56,896	4,356,012
AF.7 Financial derivatives and employee stock options	50,917	-	50,917	6,031,482	1,109	1,109	-	2,842	1,109	6,086,350
AF.8 Other accounts receivable/payable	175,500	14,077	161,423	110,270	74,357	56,375	17,982	68,630	88,434	428,757
AF.L Total financial liabilities	4,659,222	175,518	4,483,704	21,519,904	2,134,377	1,968,760	165,617	1,681,161	2,309,895	29,994,664
BF.90 Financial net worth	-2,829,533	-152,850	-2,676,683	-359,750	-1,466,754	-1,481,054	14,300	4,201,895	-1,619,604	-454,144
B.90 Total net worth	-732,420	..	..	-197,473	-449,941	-1,008,982	559,041	9,443,313	..	8,063,477

<sup>1</sup> Includes the value of the land underneath the assets.

<sup>2</sup> Formerly Intangible fixed assets.

<sup>3</sup> Formerly Intangible non-produced assets.

<sup>4</sup> The 3G and 4G spectrums are no longer classified as assets.

<sup>5</sup> Includes cherished or personalised vehicle registration plates.



**Table D National Balance Sheet: Code lookup by asset and sector**

	3	4	5	6	7	8	9	10	11	1, 2
	Non-Financial Corporations	Public Non-Financial Corporations	Private Non-Financial Corporations	Financial Corporations	General Government	Central Government	Local Government	Households & NPISH	Public Sector	Total Economy
<b>Non-financial assets</b>										
<b>Produced non-financial assets</b>										
AN.11	Fixed assets	NG2D			NG33	NG3B	NG3L	NG3V	NG45	NG23
AN.111	Dwellings <sup>1</sup>	CGUT	CGVF	TMPB	CGUD	CGVQ	CGWB	ZLCS	CGRI	CGLK
AN.112	Other buildings and structures <sup>1</sup>	NG2F	NG2N	NG2V	NG35	NG3D	NG3N	NG3X	NG47	NG25
AN.1121	Buildings other than dwellings <sup>1</sup>	CGUV	CGVH	TMPD	CGUF	CGVS	CGWD	CGWO	CGRK	CGWZ
AN.1122	Other structures <sup>1</sup>	CGUW	CGVI	TMPE	CGUG	CGVT	CGWE	CGWP	CGRL	CGXA
AN.113+114	Machinery, equipment and weapons systems	NG2G			NG36	NG3E	NG3O	NG3Y	NG48	NG26
AN.1131	Transport equipment	CGUY	CGVK	TMPO	CGUI	CGVV	CGWG	CGWR	CGRN	CGXC
AN.1132	ICT equipment	MU7X			MU82	MU83	MU84	MU85	MU86	MU7W
AN.1139+114	Other machinery, equipment and weapons systems	CGUX			CGUH	CGVU	CGWF	CGWQ	CGRM	CGRA
AN.115	Cultivated biological resources <sup>1</sup>	CGUU	CGVG	TMPC	CGUE	CGVR	CGWC	CGWN	CGRJ	CGMP
AN.117	Intellectual property products <sup>2</sup>	MKV7			MJQ4	MQ2U	MJT4	MJV6	MK2V	MJG6
AN.12	Inventories	CGUZ	CGVL	TMPG	CGUO	CGVW	CGWH	CGWS	CGRO	CGXD
AN.1	Total produced non-financial assets	NG2C			NG32	NG3A	NG3K	NG3U	NG44	NG22
<b>Non-produced non-financial assets</b>										
AN.21	Natural resources <sup>3</sup>	L683		L686						MHQ3
AN.2151	Radio spectra <sup>4</sup>	L682		L685						MHQ4
AN.22	Contracts, leases and licences <sup>3</sup>							L689		MHQ5
AN.223	Permits to undertake specific activities <sup>5</sup>							L688		MHQ8
AN.2	Total non-produced non-financial assets	L684		L687				L68A		NG28
AN	<b>Total non-financial assets</b>	NG2I			NG38	NG3I	NG3S	NG42	NG4A	NG2A
<b>Financial assets and liabilities</b>										
<b>Financial assets</b>										
AF.1	Monetary gold and special drawing rights					NIFC	NIFC			NG4L
AF.2	Currency and deposits	NNZF	NKDR	NKJZ	NLJD	NLUT	NIFF	NJEL	NNMP	NG4M
AF.3	Debt securities	NNZO	NKEA	NKKI	NLJM	NLWC	NIFO	NJEU	NNMY	NG4N
AF.4	Loans	NOME	NKFC	NKXY	NLKO	NLXE	NIGQ	NJFW	NNOA	NG4O
AF.5	Equity and investment fund shares/units	NOMW	NKFU	NKQY	NLLG	NLXW	NIHI	NJGO	NNOS	NG4P
AF.6	Insurance, pension and standardised guarantee schemes	NPYN	NPYB	NPYD	NPYH	NPYJ		NPXT	NPYL	NG4Q
AF.7	Financial derivatives and employee stock options	MMU6		MMU8	MMU9	MMV2	MMW3		MMW5	MUM8
AF.8	Other accounts receivable/payable	NONQ	NKGO	NKYK	NLMA	NLYQ	NIIC	NJHI	NNPM	NG4R
AF.A	Total financial assets	NNZB	NKFB	NKWX	NLIZ	NPUP	NIGP	NJFV	NNML	KQ8D
<b>Financial liabilities</b>										
AF.1	Monetary gold and special drawing rights					NLYU	M9MM			MUV2
AF.2	Currency and deposits	NONX	NKGV		NLMH	NLYX	NIJ			NG4S
AF.3	Debt securities	NOOG	NKHE	NKZA	NLMQ	NLZG	NIIS	NJHY	NNQC	NG4T
AF.4	Loans	NOPI	NKIG	NLBC	NLNS	NNKW	NIJU	NJJA	NNRE	NG4U
AF.5	Equity and investment fund shares/units	NOQA	NKIY	NLBU	NLOK					NG4V
AF.6	Insurance, pension and standardised guarantee schemes	NPYQ	M9VK	M9RJ	NPYI	NNBZ		M9RL	NPYM	MUJ6
AF.7	Financial derivatives and employee stock options	MMX2		MMX4	MMX5	MMY6	MMY7		MMY9	MUM9
AF.8	Other accounts receivable/payable	NOQU	NKJS	NLCO	NLPE	NNMI	NILG	NJKM	NNSQ	NG4X
AF.L	Total financial liabilities	NONT	NKIF	NLBB	NLMD	NPVQ	NIJT	NJIZ	NNPP	NG4Y
BF.90	<b>Financial net worth</b>	NYOM	NYOP	NYOT	NYOE	NYOG	NZDZ	NYOJ	NZEA	CGSA
B.90	<b>Total net worth</b>	CGRV			CGRU	CGRX	CGRY	CGRZ	CGRC	CGDA

<sup>1</sup> Includes the value of the land underneath the assets.

<sup>2</sup> Formerly Intangible fixed assets.

<sup>3</sup> Formerly Intangible non-produced assets.

<sup>4</sup> The 3G and 4G spectrums are no longer classified as assets.

<sup>5</sup> Includes cherished or personalised vehicle registration plates.

**Table 1 National Balance Sheet: UK total net worth by sector and year**  
**At Current Prices**

			£ million at end year									
			2006	2007	2008	2009	2010	2011	2012	2013	2014	
<b>Non-financial corporations<sup>1</sup></b>												
S.11001	Public <sup>2</sup>	CGRW	..	..	..	..	..	..	..	..	..	
S.11PR	Private <sup>1</sup>	TMPN	..	..	..	..	..	..	..	..	..	
S.11	Total	CGRV	-682,701	-763,795	-294,219	-687,346	-482,747	-644,897	-819,346	-678,460	-732,420	
S.12	<b>Financial corporations</b>	CGRU	-64,694	50,853	199,081	106,221	106,109	268,395	104,645	166,464	-197,473	
<b>General government<sup>2</sup></b>												
S.1311	Central government	CGRY	-123,004	-148,002	-213,039	-338,398	-453,902	-695,917	-747,492	-752,020	-1,008,982	
S.1313	Local government	CGRZ	487,121	536,851	470,800	431,687	461,462	479,671	501,059	528,996	559,041	
S.13	Total	CGRX	364,117	388,849	257,761	93,289	7,560	-216,246	-246,433	-223,024	-449,941	
S.14+S.15	<b>Households and NPISH<sup>3</sup></b>	CGRC	6,760,152	7,196,867	6,573,639	6,962,796	7,502,608	7,876,018	8,209,435	8,413,375	9,443,313	
S.1	<b>Total net worth</b>	CGDA	6,376,873	6,872,774	6,736,259	6,474,962	7,133,530	7,283,281	7,248,300	7,678,349	8,063,477	

<sup>1</sup> Including quasi-corporations.

<sup>2</sup> Public sector (general government plus public non-financial corporations) is shown in table 11.

<sup>3</sup> Non-profit institutions serving households.

<sup>4</sup> .. indicates that data have been suppressed in this table. This is because the institutional sector and asset breakdown of public non-financial corporations (S.11), into public non-financial corporations (S.11001) and private non-financial corporations (S.11PR), is unavailable from the capital stocks dataset.

**Table 2 National Balance Sheet: UK total net worth by asset and year**  
At Current Prices

				£ million at end year					
				2009	2010	2011	2012	2013	2014
<b>Non-financial assets</b>									
<b>Produced non-financial assets</b>									
AN.11	Fixed assets	NG23		6,465,659	7,013,359	7,147,132	7,334,322	7,650,904	8,231,386
AN.111	Dwellings <sup>1</sup>	CGLK		4,048,757	4,259,804	4,281,069	4,443,681	4,653,661	5,061,832
AN.112	Other buildings and structures <sup>1</sup>	NG25		1,308,499	1,585,035	1,654,186	1,652,893	1,739,804	1,897,399
AN.1121	Buildings other than dwellings <sup>1</sup>	CGMU		562,223	796,869	808,795	774,168	824,839	950,197
AN.1122	Other structures <sup>1</sup>	CGQZ		746,276	788,166	845,391	878,725	914,965	947,202
AN.113+114	Machinery, equipment and weapons systems	NG26		780,937	808,627	833,036	844,636	844,007	849,615
AN.1131	Transport equipment	CGRB		174,841	192,594	187,684	195,009	184,505	186,758
AN.1132	ICT equipment	MU7W		27,338	29,214	29,830	31,877	32,138	36,235
AN.1139+114	Other machinery, equipment and weapons systems	CGRA		578,758	586,819	615,522	617,750	627,364	626,622
AN.115	Cultivated biological resources <sup>1</sup>	CGMP		148,427	178,097	192,913	203,665	219,032	225,975
AN.117	Intellectual property products <sup>2</sup>	MJG6		179,039	181,796	185,928	189,447	194,400	196,565
AN.12	Inventories	CGRD		233,459	244,890	255,727	259,323	269,089	283,728
AN.1	Total produced non-financial assets	NG22		6,699,118	7,258,249	7,402,859	7,593,645	7,919,993	8,515,114
<b>Non-produced non-financial assets</b>									
AN.21	Natural resources <sup>3</sup>	MHQ3		-	-	-	-	-	-
AN.2151	Radio spectra <sup>4</sup>	MHQ4		-	-	-	-	-	-
AN.22	Contracts, leases and licences <sup>3</sup>	MHQ5		1,954	2,061	2,170	2,257	2,372	2,507
AN.223	Permits to undertake specific activities <sup>5</sup>	MHQ8		1,954	2,061	2,170	2,257	2,372	2,507
AN.2	Total non-produced non-financial assets	NG28		1,954	2,061	2,170	2,257	2,372	2,507
AN	<b>Total non-financial assets</b>	NG2A		6,701,072	7,260,310	7,405,029	7,595,902	7,922,365	8,517,621
<b>Financial assets and liabilities</b>									
<b>Financial assets</b>									
AF.1	Monetary gold and special drawing rights	NYVN		15,701	18,159	19,250	19,342	16,267	16,677
AF.2	Currency and deposits	NYVT		6,198,544	6,291,421	6,638,517	6,507,251	6,394,140	6,113,023
AF.3	Debt securities	NYWL		2,824,267	3,037,298	3,254,772	3,399,943	3,384,652	3,783,453
AF.4	Loans	NYYP		4,362,066	4,438,852	4,331,567	4,336,360	4,290,419	4,175,960
AF.5	Equity and investment fund shares/units	NYZZ		3,855,133	4,339,075	4,159,579	4,402,634	4,599,584	4,563,107
AF.6	Insurance, pension and standardised guarantee schemes	NZBF		3,077,281	3,206,617	3,922,645	4,023,101	3,655,585	4,341,022
AF.7	Financial derivatives and employee stock options	MMU5		5,279,895	6,411,053	8,124,867	6,908,721	5,524,496	6,108,559
AF.8	Other accounts receivable/payable	NZBP		384,721	379,988	379,994	428,266	434,643	438,721
AF.A	Total financial assets	NZBV		25,997,608	28,122,464	30,831,196	30,025,618	28,299,784	29,540,520
<b>Financial liabilities</b>									
AF.1	Monetary gold and special drawing rights	NYVO		9,810	10,098	10,063	9,637	9,450	9,406
AF.2	Currency and deposits	NYVU		6,594,376	6,563,334	6,861,913	6,743,033	6,545,939	6,214,805
AF.3	Debt securities	NYWM		3,261,912	3,409,040	3,634,261	3,676,475	3,544,297	3,971,396
AF.4	Loans	NY YQ		4,184,164	4,394,042	4,375,465	4,624,904	4,582,679	4,454,907
AF.5	Equity and investment fund shares/units	NZAA		3,504,335	3,935,405	3,703,879	3,984,864	4,291,464	4,473,031
AF.6	Insurance, pension and standardised guarantee schemes	NZBG		3,091,060	3,219,565	3,934,898	4,038,472	3,670,637	4,356,012
AF.7	Financial derivatives and employee stock options	MMW9		5,200,287	6,343,122	8,061,915	6,880,999	5,476,820	6,086,350
AF.8	Other accounts receivable/payable	NZBQ		377,776	374,637	370,554	414,834	422,511	428,757
AF.L	Total financial liabilities	NZBW		26,223,718	28,249,244	30,952,944	30,373,220	28,543,800	29,994,664
BF.90	<b>Financial net worth</b>	NQFT		-226,110	-126,780	-121,748	-347,602	-244,016	-454,144
B.90	<b>Total net worth</b>	CGDA		6,474,962	7,133,530	7,283,281	7,248,300	7,678,349	8,063,477

<sup>1</sup> Includes the value of the land underneath the assets.

<sup>2</sup> Formerly Intangible fixed assets.

<sup>3</sup> Formerly Intangible non-produced assets

<sup>4</sup> The 3G and 4G spectrums are no longer classified as assets.

<sup>5</sup> Includes cherished or personalised vehicle registration plates.

**Table 3 Non-Financial Corporations: Total net worth by asset and year**  
At Current Prices

£ million at end year

				2009	2010	2011	2012	2013	2014
<b>Non-financial assets</b>									
<b>Produced non-financial assets</b>									
AN.11	Fixed assets	NG2D		1,361,113	1,617,296	1,640,344	1,633,279	1,699,668	1,839,325
AN.111	Dwellings <sup>1</sup>	CGUT		211,068	208,542	201,822	203,271	209,181	216,008
AN.112	Other buildings and structures <sup>1</sup>	NG2F		511,588	754,559	769,631	761,081	814,232	938,571
AN.1121	Buildings other than dwellings <sup>1</sup>	CGUV		171,450	377,885	358,958	337,922	373,631	480,365
AN.1122	Other structures <sup>1</sup>	CGUW		340,138	376,674	410,673	423,159	440,601	458,206
AN.113	Machinery and equipment	NG2G		493,382	505,446	516,074	512,233	514,349	519,248
AN.1131	Transport equipment	CGUY		90,293	100,832	95,230	99,599	98,035	105,414
AN.1132	ICT equipment	MU7X		12,852	13,546	12,984	13,129	13,391	16,356
AN.1139	Other machinery and equipment	CGUX		390,237	391,068	407,860	399,505	402,923	397,478
AN.115	Cultivated biological resources <sup>1</sup>	CGUU		10,293	12,211	13,154	13,152	14,723	15,044
AN.117	Intellectual property products <sup>2</sup>	MKV7		134,782	136,538	139,663	143,542	147,183	150,454
AN.12	Inventories	CGUZ		210,395	221,008	231,254	234,774	244,000	257,788
AN.1	Total produced non-financial assets	NG2C		1,571,508	1,838,304	1,871,598	1,868,053	1,943,668	2,097,113
<b>Non-produced non-financial assets</b>									
AN.21	Natural resources <sup>3</sup>	L683		-	-	-	-	-	-
AN.2151	Radio spectra <sup>4</sup>	L682		-	-	-	-	-	-
AN.2	Total non-produced non-financial assets	L684		-	-	-	-	-	-
AN	<b>Total non-financial assets</b>	NG2I		1,571,508	1,838,304	1,871,598	1,868,053	1,943,668	2,097,113
<b>Financial assets and liabilities</b>									
<b>Financial assets</b>									
AF.2	Currency and deposits	NNZF		427,930	452,561	446,372	480,314	506,400	518,194
AF.3	Debt securities	NNZO		49,553	58,960	65,589	59,639	52,088	90,571
AF.4	Loans	NOME		316,186	370,171	313,003	315,158	331,612	332,017
AF.5	Equity and investment fund shares/units	NOMW		812,226	862,324	888,597	873,827	791,327	741,280
AF.6	Insurance, pension and standardised guarantee schemes	NPYN		11,031	7,181	4,734	4,166	4,029	3,980
AF.7	Financial derivatives and employee stock options	MMU6		24,328	25,262	29,689	28,611	25,622	29,976
AF.8	Other accounts receivable/payable	NONQ		120,510	117,632	117,154	115,378	115,681	113,671
AF.A	Total financial assets	NNZB		1,761,764	1,894,091	1,865,138	1,877,093	1,826,759	1,829,689
<b>Financial liabilities</b>									
AF.2	Currency and deposits	NONX		-	-	-	-	-	-
AF.3	Debt securities	NOOG		308,295	305,540	337,319	360,538	381,398	365,964
AF.4	Loans	NOPI		1,105,444	1,073,021	1,056,577	1,111,472	1,021,699	996,757
AF.5	Equity and investment fund shares/units	NOQA		1,953,057	2,192,843	2,072,331	2,183,923	2,331,590	2,414,355
AF.6	Insurance, pension and standardised guarantee schemes	NPYO		458,872	444,292	697,350	693,765	501,581	655,729
AF.7	Financial derivatives and employee stock options	MMX2		36,867	39,916	51,917	46,650	40,359	50,917
AF.8	Other accounts receivable/payable	NOQU		158,083	159,530	166,139	168,144	172,260	175,500
AF.L	Total financial liabilities	NONT		4,020,618	4,215,142	4,381,633	4,564,492	4,448,887	4,659,222
BF.90	<b>Financial net worth</b>	NYOM		-2,258,854	-2,321,051	-2,516,495	-2,687,399	-2,622,128	-2,829,533
B.90	<b>Total net worth</b>	CGRV		-687,346	-482,747	-644,897	-819,346	-678,460	-732,420

<sup>1</sup> Includes the value of the land underneath the assets.

<sup>2</sup> Formerly Intangible fixed assets.

<sup>3</sup> Formerly Intangible non-produced assets.

<sup>4</sup> The 3G and 4G spectrums are no longer classified as assets.

**Table 4 Public Non-Financial Corporations: Total net worth by asset and year**  
**At Current Prices**

				£ million at end year					
				2009	2010	2011	2012	2013	2014
<b>Non-financial assets</b>									
<b>Produced non-financial assets</b>									
AN.11	Fixed assets	NG2L		..	..	..	..	..	..
AN.111	Dwellings <sup>1</sup>	CGVF	105,133	96,622	87,554	84,702	83,963	78,799	
AN.112	Other buildings and structures <sup>1</sup>	NG2N	52,888	54,066	57,005	56,167	56,655	61,752	
AN.1121	Buildings other than dwellings <sup>1</sup>	CGVH	27,974	29,413	30,872	29,869	28,820	30,023	
AN.1122	Other structures <sup>1</sup>	CGVI	24,914	24,653	26,133	26,298	27,835	31,729	
AN.113	Machinery and equipment	NG2O	..	..	..	..	..	..	
AN.1131	Transport equipment	CGVK	2,624	2,864	3,143	3,554	3,662	4,021	
AN.1132	ICT equipment	MU7Y	..	..	..	..	..	..	
AN.1139	Other machinery and equipment	CGVJ	..	..	..	..	..	..	
AN.115	Cultivated biological resources <sup>1</sup>	CGVG	2,506	3,012	3,254	3,678	3,724	3,883	
AN.117	Intellectual property products <sup>2</sup>	MJJ9	..	..	..	..	..	..	
AN.12	Inventories	CGVL	5,366	5,502	5,606	5,639	5,723	5,849	
AN.1	Total produced non-financial assets	NG2K	..	..	..	..	..	..	
<b>AN</b>	<b>Total non-financial assets</b>	<b>NG2Q</b>	..	..	..	..	..	..	
<b>Financial assets and liabilities</b>									
<b>Financial assets</b>									
AF.2	Currency and deposits	NKDR	7,013	6,228	7,948	6,812	7,097	6,652	
AF.3	Debt securities	NKEA	2,271	2,314	2,302	1,455	1,421	1,410	
AF.4	Loans	NKFC	1,640	1,635	1,536	1,500	1,410	1,377	
AF.5	Equity and investment fund shares/units	NKFU	754	862	862	1,545	1,643	1,680	
AF.6	Insurance, pension and standardised guarantee schemes	NPYB	-	-	-	-	-	-	
AF.8	Other accounts receivable/payable	NKGO	9,658	10,073	10,867	10,195	11,484	11,549	
AF.A	Total financial assets	NKFB	21,336	21,112	23,515	21,507	23,055	22,668	
<b>Financial liabilities</b>									
AF.2	Currency and deposits	NKGV	-	-	-	-	-	-	
AF.3	Debt securities	NKHE	17,280	13,104	15,515	13,814	25,134	25,715	
AF.4	Loans	NKIG	9,925	8,144	8,010	8,204	8,226	8,563	
AF.5	Equity and investment fund shares/units	NKIY	119,224	120,464	121,772	123,744	124,697	127,163	
AF.6	Insurance, pension and standardised guarantee schemes	M9VK	-	-	-	-	-	-	
AF.8	Other accounts receivable/payable	NKJS	15,433	13,951	14,784	14,621	14,410	14,077	
AF.L	Total financial liabilities	NKIF	161,862	155,663	160,081	160,383	172,467	175,518	
<b>BF.90</b>	<b>Financial net worth</b>	<b>NYOP</b>	<b>-140,526</b>	<b>-134,551</b>	<b>-136,566</b>	<b>-138,876</b>	<b>-149,412</b>	<b>-152,850</b>	
<b>B.90</b>	<b>Total net worth</b>	<b>CGRW</b>	..	..	..	..	..	..	

<sup>1</sup> Includes the value of the land underneath the assets.

<sup>2</sup> Formerly Intangible fixed assets.

<sup>3</sup> .. indicates that data have been suppressed in this table. This is because the institutional sector and asset breakdown of public non-financial corporations (S.11), into public non-financial corporations (S.11001) and private non-financial corporations (S.11PR), is unavailable from the capital stocks dataset.

**Table 5 Private Non-Financial Corporations: Total net worth by asset and year**  
**At Current Prices**

£ million at end year

		2009	2010	2011	2012	2013	2014
<b>Non-financial assets</b>							
<b>Produced non-financial assets</b>							
AN.11	Fixed assets	NG2T	..	..	..	..	..
AN.111	Dwellings <sup>1</sup>	TMPB	105,935	111,920	114,268	118,569	137,209
AN.112	Other buildings and structures <sup>1</sup>	NG2V	458,700	700,493	712,626	704,914	876,819
AN.1121	Buildings other than dwellings <sup>1</sup>	TMPD	143,476	348,472	328,086	308,053	450,342
AN.1122	Other structures <sup>1</sup>	TMPE	315,224	352,021	384,540	396,861	426,477
AN.113	Machinery and equipment	NG2W	..	..	..	..	..
AN.1131	Transport equipment	TMPD	87,669	97,968	92,087	96,045	101,393
AN.1132	ICT equipment	MU7Z	..	..	..	..	..
AN.1139	Other machinery and equipment	TMPF	..	..	..	..	..
AN.115	Cultivated biological resources <sup>1</sup>	TMPC	7,787	9,199	9,900	9,474	11,161
AN.117	Intellectual property products <sup>2</sup>	MJN7	..	..	..	..	..
AN.12	Inventories	TMPG	205,029	215,506	225,648	229,135	251,939
AN.1	Total produced non-financial assets	NG2S	..	..	..	..	..
<b>Non-produced non-financial assets</b>							
AN.21	Natural resources <sup>3</sup>	L686	-	-	-	-	-
AN.2151	Radio spectra <sup>4</sup>	L685	-	-	-	-	-
AN.2	Total non-produced non-financial assets	L687	-	-	-	-	-
AN	<b>Total non-financial assets</b>	NG2Y	..	..	..	..	..
<b>Financial assets and liabilities</b>							
<b>Financial assets</b>							
AF.2	Currency and deposits	NKJZ	420,917	446,333	438,424	473,502	511,542
AF.3	Debt securities	NKKI	47,282	56,646	63,287	58,184	89,161
AF.4	Loans	NKWY	314,546	368,536	311,467	313,658	330,202
AF.5	Equity and investment fund shares/units	NKXQ	811,472	861,462	887,735	872,282	739,600
AF.6	Insurance, pension and standardised guarantee schemes	NPYD	11,031	7,181	4,734	4,166	3,980
AF.7	Financial derivatives and employee stock options	MMU8	24,328	25,262	29,689	28,611	29,976
AF.8	Other accounts receivable/payable	NKYK	110,852	107,559	106,287	105,183	102,122
AF.A	Total financial assets	NKWX	1,740,428	1,872,979	1,841,623	1,855,586	1,807,021
<b>Financial liabilities</b>							
AF.3	Debt securities	NKZA	291,015	292,436	321,804	346,724	340,249
AF.4	Loans	NLBC	1,095,519	1,064,877	1,048,567	1,103,268	988,194
AF.5	Equity and investment fund shares/units	NLBU	1,833,833	2,072,379	1,950,559	2,060,179	2,206,893
AF.6	Insurance, pension and standardised guarantee schemes	M9RJ	458,872	444,292	697,350	693,765	655,729
AF.7	Financial derivatives and employee stock options	MMX4	36,867	39,916	51,917	46,650	50,917
AF.8	Other accounts receivable/payable	NLCO	142,650	145,579	151,355	153,523	161,423
AF.L	Total financial liabilities	NLBB	3,858,756	4,059,479	4,221,552	4,404,109	4,483,704
BF.90	<b>Financial net worth</b>	NYOT	-2,118,328	-2,186,500	-2,379,929	-2,548,523	-2,472,716
B.90	<b>Total net worth</b>	TMPN	..	..	..	..	..

<sup>1</sup> Includes the value of the land underneath the assets.

<sup>2</sup> Formerly Intangible fixed assets.

<sup>3</sup> Formerly Intangible non-produced assets

<sup>4</sup> The 3G and 4G spectrums are no longer classified as assets.

<sup>5</sup> .. indicates that data have been suppressed in this table. This is because the institutional sector and asset breakdown of public non-financial corporations (S.11), into public non-financial corporations (S.11001) and private non-financial corporations (S.11PR), is unavailable from the capital stocks dataset.

**Table 6 Financial Corporations: Total net worth by asset and year**  
At Current Prices

				£ million at end year					
				2009	2010	2011	2012	2013	2014
<b>Non-financial assets</b>									
<b>Produced non-financial assets</b>									
AN.11	Fixed assets	NG33		137,044	149,397	156,740	153,592	158,898	161,810
AN.111	Dwellings <sup>1</sup>	CGUD		4,758	4,172	4,063	3,816	3,319	2,566
AN.112	Other buildings and structures <sup>1</sup>	NG35		106,259	117,725	122,823	117,619	121,402	123,428
AN.1121	Buildings other than dwellings <sup>1</sup>	CGUF		106,259	117,725	122,823	117,619	121,402	123,428
AN.1122	Other structures <sup>1</sup>	CGUG		-	-	-	-	-	-
AN.113	Machinery and equipment	NG36		15,608	16,286	17,885	19,635	20,686	22,084
AN.1131	Transport equipment	CGUI		209	198	324	304	535	1,050
AN.1132	ICT equipment	MU82		2,692	2,929	3,149	3,921	3,933	4,660
AN.1139	Other machinery and equipment	CGUH		12,707	13,159	14,412	15,410	16,218	16,374
AN.115	Cultivated biological resources <sup>1</sup>	CGUE		2,397	2,885	3,130	3,347	3,566	3,687
AN.117	Intellectual property products <sup>2</sup>	MJQ4		8,022	8,329	8,839	9,175	9,925	10,045
AN.12	Inventories	CGUO		249	300	349	365	406	467
AN.1	Total produced non-financial assets	NG32		137,293	149,697	157,089	153,957	159,304	162,277
<b>AN</b>	<b>Total non-financial assets</b>	<b>NG38</b>		<b>137,293</b>	<b>149,697</b>	<b>157,089</b>	<b>153,957</b>	<b>159,304</b>	<b>162,277</b>
<b>Financial assets and liabilities</b>									
<b>Financial assets</b>									
AF.2	Currency and deposits	NLJD		4,505,823	4,563,240	4,866,241	4,634,984	4,443,220	4,091,689
AF.3	Debt securities	NLJM		2,683,835	2,864,574	3,059,108	3,205,555	3,198,920	3,535,857
AF.4	Loans	NLKO		3,929,946	3,857,367	3,809,306	3,797,951	3,733,887	3,615,350
AF.5	Equity and investment fund shares/units	NLLG		2,297,064	2,621,680	2,531,782	2,813,874	3,037,490	2,961,640
AF.6	Insurance, pension and standardised guarantee schemes	NPYH		623,439	602,927	917,234	886,436	651,685	826,197
AF.7	Financial derivatives and employee stock options	MMU9		5,248,484	6,376,289	8,083,303	6,871,572	5,487,323	6,069,641
AF.8	Other accounts receivable/payable	NLMA		68,203	56,319	53,224	58,596	62,039	59,780
AF.A	Total financial assets	NLIZ		19,356,794	20,942,396	23,320,196	22,268,968	20,614,564	21,160,154
<b>Financial liabilities</b>									
AF.2	Currency and deposits	NLMH		6,463,417	6,434,431	6,724,205	6,607,532	6,418,411	6,069,826
AF.3	Debt securities	NLMQ		2,071,816	1,971,683	1,902,611	1,833,179	1,672,216	1,851,642
AF.4	Loans	NLNS		1,527,657	1,764,864	1,751,129	1,914,756	1,943,488	1,797,448
AF.5	Equity and investment fund shares/units	NLOK		1,551,278	1,742,562	1,631,548	1,800,941	1,959,874	2,058,676
AF.6	Insurance, pension and standardised guarantee schemes	NPYI		2,512,736	2,673,489	3,098,608	3,226,018	3,073,044	3,600,560
AF.7	Financial derivatives and employee stock options	MMX5		5,159,254	6,297,335	8,001,222	6,830,196	5,430,982	6,031,482
AF.8	Other accounts receivable/payable	NLPE		101,708	101,620	99,567	105,657	109,390	110,270
AF.L	Total financial liabilities	NLMD		19,387,866	20,985,984	23,208,890	22,318,280	20,607,404	21,519,904
<b>BF.90</b>	<b>Financial net worth</b>	<b>NYOE</b>		<b>-31,072</b>	<b>-43,588</b>	<b>111,306</b>	<b>-49,312</b>	<b>7,160</b>	<b>-359,750</b>
<b>B.90</b>	<b>Total net worth</b>	<b>CGRU</b>		<b>106,221</b>	<b>106,109</b>	<b>268,395</b>	<b>104,645</b>	<b>166,464</b>	<b>-197,473</b>

<sup>1</sup> Includes the value of the land underneath the assets.

<sup>2</sup> Formerly Intangible fixed assets.

**Table 7 General Government: Total net worth by asset and year**  
At Current Prices

				£ million at end year					
				2009	2010	2011	2012	2013	2014
<b>Non-financial assets</b>									
<b>Produced non-financial assets</b>									
AN.11	Fixed assets	NG3B		838,006	865,816	924,669	953,558	987,925	1,016,221
AN.111	Dwellings <sup>1</sup>	CGVQ		6,407	10,382	9,337	13,506	15,343	14,087
AN.112	Other buildings and structures <sup>1</sup>	NG3D		638,302	650,777	699,267	712,637	739,806	765,919
AN.1121	Buildings other than dwellings <sup>1</sup>	CGVS		234,108	241,556	266,820	259,219	267,582	279,047
AN.1122	Other structures <sup>1</sup>	CGVT		404,194	409,221	432,447	453,418	472,224	486,872
AN.113+114	Machinery, equipment and weapons systems	NG3E		161,661	171,785	182,728	194,582	199,321	204,096
AN.1131	Transport equipment	CGVV		7,093	10,293	11,380	12,145	12,542	13,250
AN.1132	ICT equipment	MU83		9,165	10,078	11,181	12,326	12,284	12,212
AN.1139+114	Other machinery, equipment and weapons systems	CGVU		145,403	151,414	160,167	170,111	174,495	178,634
AN.115	Cultivated biological resources <sup>1</sup>	CGVR		5,356	6,419	6,951	7,383	7,895	8,152
AN.117	Intellectual property products <sup>2</sup>	MQ2U		26,280	26,453	26,386	25,450	25,560	23,967
AN.12	Inventories	CGVW		1,022	1,015	883	722	652	592
AN.1	Total produced non-financial assets	NG3A		839,028	866,831	925,552	954,280	988,577	1,016,813
AN	<b>Total non-financial assets</b>	NG3I		839,028	866,831	925,552	954,280	988,577	1,016,813
<b>Financial assets and liabilities</b>									
<b>Financial assets</b>									
AF.1	Monetary gold and special drawing rights	NIFC		15,701	18,159	19,250	19,342	16,267	16,677
AF.2	Currency and deposits	NLUT		91,466	65,184	77,790	85,921	87,435	90,038
AF.3	Debt securities	NLWC		30,304	48,032	54,798	55,754	52,299	58,437
AF.4	Loans	NLXE		97,589	192,878	190,848	204,759	206,232	209,848
AF.5	Equity and investment fund shares/units	NLXW		174,804	197,209	179,158	212,915	194,780	199,888
AF.6	Insurance, pension and standardised guarantee schemes	NPYJ		731	701	684	697	674	666
AF.7	Financial derivatives and employee stock options	MMW2		-275	2,038	2,739	3,287	2,938	2,095
AF.8	Other accounts receivable/payable	NLYQ		72,240	80,736	80,377	81,046	85,208	89,974
AF.A	Total financial assets	NPUP		482,560	604,937	605,644	663,721	645,833	667,623
<b>Financial liabilities</b>									
AF.1	Monetary gold and special drawing rights	NLYU		9,810	10,098	10,063	9,637	9,450	9,406
AF.2	Currency and deposits	NLYX		130,959	128,903	137,708	135,501	127,528	144,979
AF.3	Debt securities	NLZG		880,502	1,130,511	1,392,940	1,481,376	1,489,016	1,751,564
AF.4	Loans	NNKW		78,561	80,528	82,425	90,822	93,652	96,066
AF.6	Insurance, pension and standardised guarantee schemes	NNBZ		92,038	74,174	84,975	73,378	63,253	56,896
AF.7	Financial derivatives and employee stock options	MMY6		658	2,740	3,298	2,359	1,259	1,109
AF.8	Other accounts receivable/payable	NNMI		35,771	37,254	36,033	71,361	73,276	74,357
AF.L	Total financial liabilities	NPVQ		1,228,299	1,464,208	1,747,442	1,864,434	1,857,434	2,134,377
BF.90	<b>Financial net worth</b>	NYOG		-745,739	-859,271	-1,141,798	-1,200,713	-1,211,601	-1,466,754
B.90	<b>Total net worth</b>	CGRX		93,289	7,560	-216,246	-246,433	-223,024	-449,941

<sup>1</sup> Includes the value of the land underneath the assets.

<sup>2</sup> Formerly Intangible fixed assets.



**Table 8 Central Government: Total net worth by asset and year**  
**At Current Prices**

				£ million at end year					
				2009	2010	2011	2012	2013	2014
<b>Non-financial assets</b>									
<b>Produced non-financial assets</b>									
AN.11	Fixed assets	NG3L		384,805	400,538	431,678	450,772	464,464	471,480
AN.111	Dwellings <sup>1</sup>	CGWB		6,407	10,382	9,337	13,506	15,343	14,087
AN.112	Other buildings and structures <sup>1</sup>	NG3N		250,914	255,433	281,281	290,097	296,247	300,895
AN.1121	Buildings other than dwellings <sup>1</sup>	CGWD		99,927	105,932	114,813	112,000	115,436	120,647
AN.1122	Other structures <sup>1</sup>	CGWE		150,987	149,501	166,468	178,097	180,811	180,248
AN.113+114	Machinery, equipment and weapons systems	NG3O		112,456	117,914	123,240	129,159	133,816	138,212
AN.1131	Transport equipment	CGWG		5,336	8,295	9,203	9,620	10,041	10,494
AN.1132	ICT equipment	MU84		411	435	467	507	549	544
AN.1139+114	Other machinery, equipment and weapons systems	CGWF		106,709	109,184	113,570	119,032	123,226	127,174
AN.115	Cultivated biological resources <sup>1</sup>	CGWC		100	100	100	100	100	100
AN.117	Intellectual property products <sup>2</sup>	MJT4		14,928	16,709	17,720	17,910	18,958	18,186
AN.12	Inventories	CGWH		1,022	1,015	883	722	652	592
AN.1	Total produced non-financial assets	NG3K		385,827	401,553	432,561	451,494	465,116	472,072
<b>AN</b>	<b>Total non-financial assets</b>	<b>NG3S</b>		<b>385,827</b>	<b>401,553</b>	<b>432,561</b>	<b>451,494</b>	<b>465,116</b>	<b>472,072</b>
<b>Financial assets and liabilities</b>									
<b>Financial assets</b>									
AF.1	Monetary gold and special drawing rights	NIFC		15,701	18,159	19,250	19,342	16,267	16,677
AF.2	Currency and deposits	NIFF		64,119	38,151	49,702	51,859	56,372	57,971
AF.3	Debt securities	NIFO		28,095	45,142	52,338	52,652	47,356	51,880
AF.4	Loans	NIGQ		90,924	185,351	182,053	193,393	193,955	196,581
AF.5	Equity and investment fund shares/units	NIHI		59,710	79,544	59,561	91,191	70,655	72,524
AF.7	Financial derivatives and employee stock options	MMW3		-275	2,038	2,739	3,287	2,938	2,095
AF.8	Other accounts receivable/payable	NIIC		70,857	79,385	79,470	80,738	85,620	89,978
AF.A	Total financial assets	NIGP		329,131	447,770	445,113	492,462	473,163	487,706
<b>Financial liabilities</b>									
AF.1	Monetary gold and special drawing rights	M9MM		9,810	10,098	10,063	9,637	9,450	9,406
AF.2	Currency and deposits	NIIJ		130,959	128,903	137,708	135,501	127,528	144,979
AF.3	Debt securities	NIIS		879,475	1,129,501	1,391,335	1,478,494	1,485,353	1,747,395
AF.4	Loans	NIJU		12,463	10,051	10,709	9,505	9,742	9,496
AF.7	Financial derivatives and employee stock options	MMY7		658	2,740	3,298	2,359	1,259	1,109
AF.8	Other accounts receivable/payable	NILG		19,991	21,932	20,478	55,952	56,967	56,375
AF.L	Total financial liabilities	NIJT		1,053,356	1,303,225	1,573,591	1,691,448	1,690,299	1,968,760
<b>BF.90</b>	<b>Financial net worth</b>	<b>NZDZ</b>		<b>-724,225</b>	<b>-855,455</b>	<b>-1,128,478</b>	<b>-1,198,986</b>	<b>-1,217,136</b>	<b>-1,481,054</b>
<b>B.90</b>	<b>Total net worth</b>	<b>CGRY</b>		<b>-338,398</b>	<b>-453,902</b>	<b>-695,917</b>	<b>-747,492</b>	<b>-752,020</b>	<b>-1,008,982</b>

<sup>1</sup> Includes the value of the land underneath the assets.

<sup>2</sup> Formerly Intangible fixed assets.

**Table 9 Local Government: Total net worth by asset and year**  
**At Current Prices**

£ million at end year

		2009	2010	2011	2012	2013	2014	
<b>Non-financial assets</b>								
<b>Produced non-financial assets</b>								
AN.11	Fixed assets	NG3V	453,201	465,278	492,991	502,786	523,461	544,741
AN.111	Dwellings <sup>1</sup>	ZLCS	-	-	-	-	-	-
AN.112	Other buildings and structures <sup>1</sup>	NG3X	387,388	395,344	417,986	422,540	443,559	465,024
AN.1121	Buildings other than dwellings <sup>1</sup>	CGWO	134,181	135,624	152,007	147,219	152,146	158,400
AN.1122	Other structures <sup>1</sup>	CGWP	253,207	259,720	265,979	275,321	291,413	306,624
AN.113	Machinery and equipment	NG3Y	49,205	53,871	59,488	65,423	65,505	65,884
AN.1131	Transport equipment	CGWR	1,757	1,998	2,177	2,525	2,501	2,756
AN.1132	ICT equipment	MU85	8,754	9,643	10,714	11,819	11,735	11,668
AN.1139	Other machinery and equipment	CGWQ	38,694	42,230	46,597	51,079	51,269	51,460
AN.115	Cultivated biological resources <sup>1</sup>	CGWN	5,256	6,319	6,851	7,283	7,795	8,052
AN.117	Intellectual property products <sup>2</sup>	MJV6	11,352	9,744	8,666	7,540	6,602	5,781
AN.12	Inventories	CGWS	-	-	-	-	-	-
AN.1	Total produced non-financial assets	NG3U	453,201	465,278	492,991	502,786	523,461	544,741
AN	<b>Total non-financial assets</b>	NG42	453,201	465,278	492,991	502,786	523,461	544,741
<b>Financial assets and liabilities</b>								
<b>Financial assets</b>								
AF.2	Currency and deposits	NJEL	27,347	27,033	28,088	34,062	31,063	32,067
AF.3	Debt securities	NJEU	2,209	2,890	2,460	3,102	4,943	6,557
AF.4	Loans	NJFW	6,665	7,527	8,795	11,366	12,277	13,267
AF.5	Equity and investment fund shares/units	NJGO	115,094	117,665	119,597	121,724	124,125	127,364
AF.6	Insurance, pension and standardised guarantee schemes	NPXT	731	701	684	697	674	666
AF.8	Other accounts receivable/payable	NJHI	1,383	1,351	907	308	-412	-4
AF.A	Total financial assets	NJFV	153,429	157,167	160,531	171,259	172,670	179,917
<b>Financial liabilities</b>								
AF.3	Debt securities	NJHY	1,027	1,010	1,605	2,882	3,663	4,169
AF.4	Loans	NJJA	66,098	70,477	71,716	81,317	83,910	86,570
AF.6	Insurance, pension and standardised guarantee schemes	M9RL	92,038	74,174	84,975	73,378	63,253	56,896
AF.8	Other accounts receivable/payable	NJKM	15,780	15,322	15,555	15,409	16,309	17,982
AF.L	Total financial liabilities	NJIZ	174,943	160,983	173,851	172,986	167,135	165,617
BF.90	<b>Financial net worth</b>	NYOJ	-21,514	-3,816	-13,320	-1,727	5,535	14,300
B.90	<b>Total net worth</b>	CGRZ	431,687	461,462	479,671	501,059	528,996	559,041

<sup>1</sup> Includes the value of the land underneath the assets.

<sup>2</sup> Formerly Intangible fixed assets.

**Table 10** Households & Non-Profit Institutions Serving Households (NPISH): Total net worth by asset and year  
At Current Prices

				£ million at end year					
				2009	2010	2011	2012	2013	2014
<b>Non-financial assets</b>									
<b>Produced non-financial assets</b>									
AN.11	Fixed assets	NG45		4,129,496	4,380,850	4,425,379	4,593,893	4,804,413	5,214,030
AN.111	Dwellings <sup>1</sup>	CGRI		3,826,524	4,036,708	4,065,847	4,223,088	4,425,818	4,829,171
AN.112	Other buildings and structures <sup>1</sup>	NG47		52,350	61,974	62,465	61,556	64,364	69,481
AN.1121	Buildings other than dwellings <sup>1</sup>	CGRK		50,406	59,703	60,194	59,408	62,224	67,357
AN.1122	Other structures <sup>1</sup>	CGRL		1,944	2,271	2,271	2,148	2,140	2,124
AN.113	Machinery and equipment	NG48		110,286	115,110	116,349	118,186	109,651	104,187
AN.1131	Transport equipment	CGRN		77,246	81,271	80,750	82,961	73,393	67,044
AN.1132	ICT equipment	MU86		2,629	2,661	2,516	2,501	2,530	3,007
AN.1139	Other machinery and equipment	CGRM		30,411	31,178	33,083	32,724	33,728	34,136
AN.115	Cultivated biological resources <sup>1</sup>	CGRJ		130,381	156,582	169,678	179,783	192,848	199,092
AN.117	Intellectual property products <sup>2</sup>	MK2V		9,955	10,476	11,040	11,280	11,732	12,099
AN.12	Inventories	CGRO		21,793	22,567	23,241	23,462	24,031	24,881
AN.1	Total produced non-financial assets	NG44		4,151,289	4,403,417	4,448,620	4,617,355	4,828,444	5,238,911
<b>Non-produced non-financial assets</b>									
AN.22	Contracts, leases and licences <sup>3</sup>	L689		1,954	2,061	2,170	2,257	2,372	2,507
AN.223	Permits to undertake specific activities <sup>4</sup>	L688		1,954	2,061	2,170	2,257	2,372	2,507
AN.2	Total non-produced non-financial assets	L68A		1,954	2,061	2,170	2,257	2,372	2,507
AN	<b>Total non-financial assets</b>	NG4A		4,153,243	4,405,478	4,450,790	4,619,612	4,830,816	5,241,418
<b>Financial assets and liabilities</b>									
<b>Financial assets</b>									
AF.2	Currency and deposits	NNMP		1,173,325	1,210,436	1,248,114	1,306,032	1,357,085	1,413,102
AF.3	Debt securities	NNMY		60,575	65,732	75,277	78,995	81,345	98,588
AF.4	Loans	NNOA		18,345	18,436	18,410	18,492	18,688	18,745
AF.5	Equity and investment fund shares/units	NNOS		571,039	657,862	560,042	502,018	575,987	660,299
AF.6	Insurance, pension and standardised guarantee schemes	NPYL		2,442,080	2,595,808	2,999,993	3,131,802	2,999,197	3,510,179
AF.7	Financial derivatives and employee stock options	MMW5		7,358	7,464	9,136	5,251	8,613	6,847
AF.8	Other accounts receivable/payable	NNPM		123,768	125,301	129,239	173,246	171,715	175,296
AF.A	Total financial assets	NNML		4,396,490	4,681,039	5,040,211	5,215,836	5,212,630	5,883,056
<b>Financial liabilities</b>									
AF.3	Debt securities	NNQC		1,299	1,306	1,391	1,382	1,667	2,226
AF.4	Loans	NNRE		1,472,502	1,475,629	1,485,334	1,507,854	1,523,840	1,564,636
AF.6	Insurance, pension and standardised guarantee schemes	NPYM		27,414	27,610	53,965	45,311	32,759	42,827
AF.7	Financial derivatives and employee stock options	MMY9		3,508	3,131	5,478	1,794	4,220	2,842
AF.8	Other accounts receivable/payable	NNSQ		82,214	76,233	68,815	69,672	67,585	68,630
AF.L	Total financial liabilities	NNPP		1,586,937	1,583,909	1,614,983	1,626,013	1,630,071	1,681,161
BF.90	<b>Financial net worth</b>	NZEA		2,809,553	3,097,130	3,425,228	3,589,823	3,582,559	4,201,895
B.90	<b>Total net worth</b>	CGRC		6,962,796	7,502,608	7,876,018	8,209,435	8,413,375	9,443,313

<sup>1</sup> Includes the value of the land underneath the assets.

<sup>2</sup> Formerly Intangible fixed assets.

<sup>3</sup> Formerly Intangible non-produced assets.

<sup>4</sup> Includes cherished or personalised vehicle registration plates.

**Table 11 Public Sector: Total net worth by asset and year<sup>1</sup>**  
**At Current Prices**

				£ million at end year					
				2009	2010	2011	2012	2013	2014
<b>Non-financial assets</b>									
<b>Produced non-financial assets</b>									
AN.11	Fixed assets	NG4D	..	..	..	..	..	..	..
AN.111	Dwellings <sup>2</sup>	CGWX	111,540	107,004	96,891	98,208	99,306	92,886	
AN.112	Other buildings and structures <sup>2</sup>	NG4F	691,190	704,843	756,272	768,804	796,461	827,671	
AN.1121	Buildings other than dwellings <sup>2</sup>	CGWZ	262,082	270,969	297,692	289,088	296,402	309,070	
AN.1122	Other structures <sup>2</sup>	CGXA	429,108	433,874	458,580	479,716	500,059	518,601	
AN.113+114	Machinery, equipment and weapons systems	NG4G	..	..	..	..	..	..	
AN.1131	Transport equipment	CGXC	9,717	13,157	14,523	15,699	16,204	17,271	
AN.1132	ICT equipment	MU87	..	..	..	..	..	..	
AN.1139+114	Other machinery, equipment and weapons systems	CGXB	..	..	..	..	..	..	
AN.115	Cultivated biological resources <sup>2</sup>	CGWY	7,862	9,431	10,205	11,061	11,619	12,035	
AN.117	Intellectual property products <sup>3</sup>	NG4H	..	..	..	..	..	..	
AN.12	Inventories	CGXD	6,388	6,517	6,489	6,361	6,375	6,441	
AN.1	Total produced non-financial assets	NG4C	..	..	..	..	..	..	
AN	<b>Total non-financial assets</b>	NG4K	..	..	..	..	..	..	
<b>Financial assets and liabilities</b>									
<b>Financial assets</b>									
AF.1	Monetary gold and special drawing rights	NG4L	15,701	18,159	19,250	19,342	16,267	16,677	
AF.2	Currency and deposits	NG4M	98,479	71,412	85,738	92,733	94,532	96,690	
AF.3	Debt securities	NG4N	32,575	50,346	57,100	57,209	53,720	59,847	
AF.4	Loans	NG4O	99,229	194,513	192,384	206,259	207,642	211,225	
AF.5	Equity and investment fund shares/units	NG4P	175,558	198,071	180,020	214,460	196,423	201,568	
AF.6	Insurance, pension and standardised guarantee schemes	NG4Q	731	701	684	697	674	666	
AF.7	Financial derivatives and employee stock options	MUM8	-275	2,038	2,739	3,287	2,938	2,095	
AF.8	Other accounts receivable/payable	NG4R	81,898	90,809	91,244	91,241	96,692	101,523	
AF.A	Total financial assets	KQ8D	503,896	626,049	629,159	685,228	668,888	690,291	
<b>Financial liabilities</b>									
AF.1	Monetary gold and special drawing rights	MUV2	9,810	10,098	10,063	9,637	9,450	9,406	
AF.2	Currency and deposits	NG4S	130,959	128,903	137,708	135,501	127,528	144,979	
AF.3	Debt securities	NG4T	897,782	1,143,615	1,408,455	1,495,190	1,514,150	1,777,279	
AF.4	Loans	NG4U	88,486	88,672	90,435	99,026	101,878	104,629	
AF.5	Equity and investment fund shares/units	NG4V	119,224	120,464	121,772	123,744	124,697	127,163	
AF.6	Insurance, pension and standardised guarantee schemes	MUU6	92,038	74,174	84,975	73,378	63,253	56,896	
AF.7	Financial derivatives and employee stock options	MUM9	658	2,740	3,298	2,359	1,259	1,109	
AF.8	Other accounts receivable/payable	NG4X	51,204	51,205	50,817	85,982	87,686	88,434	
AF.L	Total financial liabilities	NG4Y	1,390,161	1,619,871	1,907,523	2,024,817	2,029,901	2,309,895	
BF.90	<b>Financial net worth</b>	CGSA	-886,265	-993,822	-1,278,364	-1,339,589	-1,361,013	-1,619,604	
B.90	<b>Total net worth</b>	CGTY	..	..	..	..	..	..	

<sup>1</sup> Public sector is general government plus public non-financial corporations.

<sup>2</sup> Includes the value of the land underneath the assets.

<sup>3</sup> Formerly Intangible fixed assets.

<sup>4</sup> .. indicates that data have been suppressed in this table. This is because the institutional sector and asset breakdown of public non-financial corporations (S.11), into public non-financial corporations (S.11001) and private non-financial corporations (S.11PR), is unavailable from the capital stocks dataset.