

# Index of Services, June 2015



Coverage: **UK**

Date: **28 August 2015**

Geographical Area: **UK**

Theme: **Economy**

## Main points

- The Index of Services is estimated to have increased by 3.0% in June 2015 compared with June 2014. All of the 4 main components of the services industries increased in the most recent month compared with the same month a year ago.
- The largest contributions came from: business services and finance, which contributed 1.4 percentage points to total growth; and distribution, hotels and restaurants, which contributed 0.8 percentage points to total growth.
- The latest Index of Services estimates show that output increased by 0.5% between May 2015 and June 2015, following an increase of 0.2% between April 2015 and May 2015.
- The Index of Services increased by 0.7% in Quarter 2 (Apr to June) 2015 compared with Quarter 1 (Jan to Mar) 2015. This figure was unrevised from the estimate used in the Gross Domestic Product Preliminary Estimate (GDP), published on 28 July 2015. This figure is consistent with the Second Estimate of GDP, published on 28 August 2015.
- The figures within this release are estimates and are on a seasonally adjusted basis. The earliest period open for revision in this release is April 2015.

## Understanding the Index of Services (IoS)

### About the IoS

The monthly IoS provides a timely indicator of growth in the output of the services industries. The IoS is an important economic indicator and shares exactly the same industry coverage as the corresponding quarterly series within UK [gross domestic product](#) (GDP). The primary purpose of the IoS is to produce a short-term measure of the output of the services industries within the UK economy and show the monthly movements in the gross value added (GVA) of the service industries ([2007 Standard Industrial Classification](#) (SIC 2007 ) sections G to T).

The 4 main components of the services industries are:

- distribution, hotels and restaurants
- transport, storage and communication
- business services and finance
- government and other services

The IoS is the largest contributor to the output approach to the measurement of GDP, accounting for 78.4% of UK GDP in 2011.

All data in this bulletin are seasonally adjusted estimates and have had the effect of price changes removed (in other words, the data are deflated). Further information on some of the main concepts (including seasonal adjustment and deflation) underlying the estimates can be found in background note 9.

### **The quality of the IoS**

The IoS is published around 8 weeks after the end of the reference month. There is no simple way of measuring the accuracy of the IoS, that is, the extent to which the estimate measures the underlying “true” value of the output growth (of the services industries) in the UK for a particular period. All estimates, by definition, are subject to statistical uncertainty and for many well-established statistics the Office for National Statistics (ONS) measures and publishes the sampling error associated with the estimate, using this as an indicator of accuracy. However, as IoS is constructed from a wide variety of data sources, some of which are not based on random samples, we don’t publish a measure of the sampling error associated with the IoS.

Reliability is one dimension of measuring accuracy, using evidence from analyses of revisions to assess the closeness of early estimates to subsequent estimated values. Revisions are an inevitable consequence of the trade-off between timeliness and accuracy. Figures for the most recent months are provisional and subject to revision in light of:

- late responses to surveys and administrative sources
- forecasts being replaced by actual data
- revisions to seasonal adjustment factors, which are re-estimated every month and reviewed annually

Revisions to the IoS are typically small (around 0.1 to 0.2 percentage points), with the frequency of upward and downward revisions broadly equal. More information on the most recent revisions analysis can be found in the component analysis section and in background note 14.

It should be noted that care should be taken when using the month-on-month growth rates, due to their volatility (background note 8).

Further information on the quality of the IoS is available in the [Quality of the IoS \(29 Kb Pdf\)](#) report on the [Index of Services Methods](#) page on our website. It should be noted that as part of the IoS

[industry review](#) process, we are continually working on methodological changes to improve the accuracy of the IoS.

## Main information

**Table 1: Index of Services main information, June 2015**

UK

	Percentage change				
	Index number (2011=100)	Most recent month on a year earlier	Most recent 3 months on a year earlier	Most recent month on previous month	Most recent 3 months on previous 3 months
Index of services	110.2	3.0	2.8	0.5	0.7

**Table source:** Office for National Statistics

### Download table

[XLS](#) [XLS format](#)

(26 Kb)

The Index of Services (IoS) measures the quantity of output from all UK services industries, which account for more than three-quarters of the [output approach to the measurement of gross domestic product](#). Index values are presently referenced to 2011 so that the average for 2011 is equal to 100. Therefore, an index value of 110 would indicate that output is 10% higher than the average for 2011.

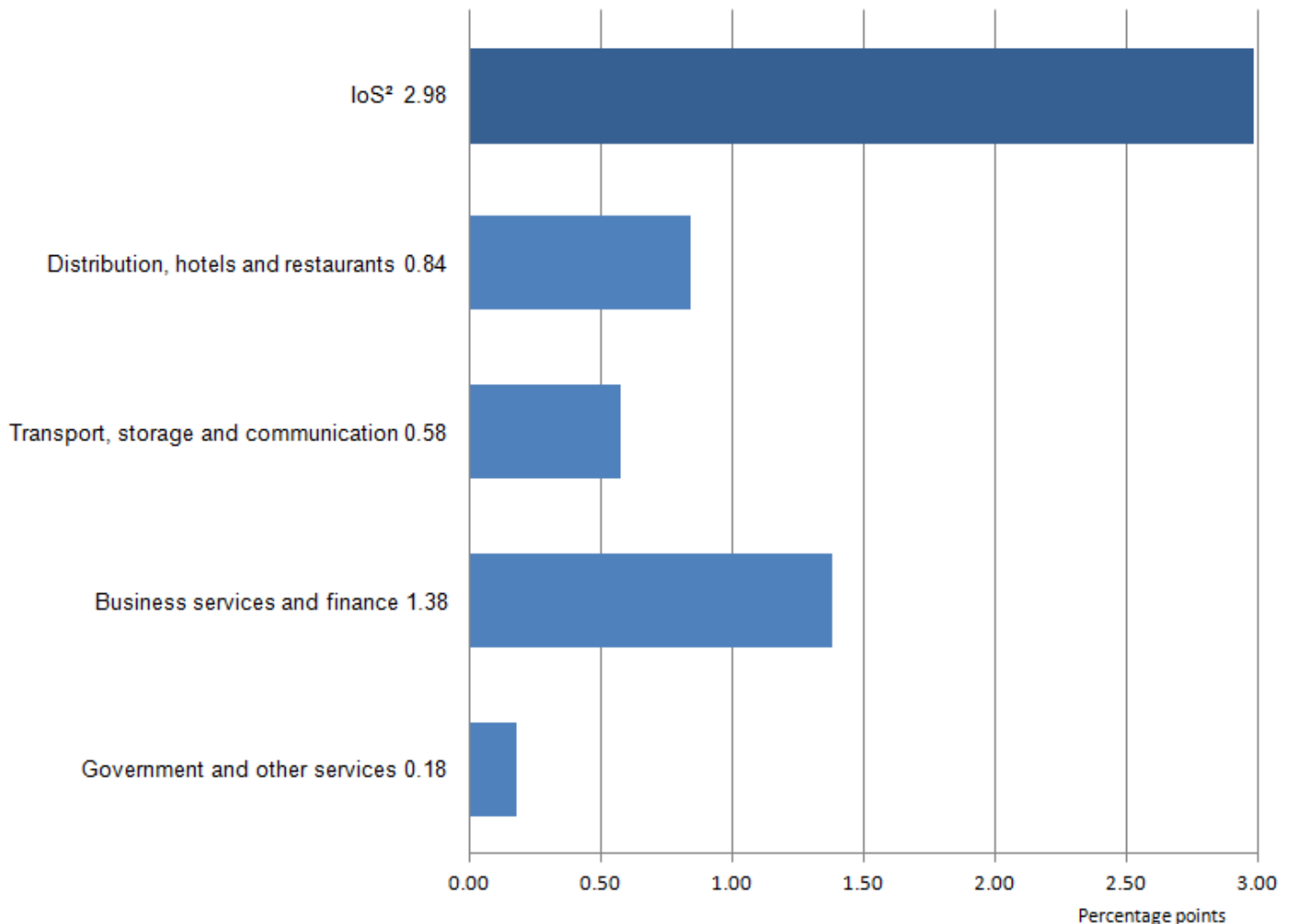
As seen in Figure 1, the IoS increased by 3.0% in June 2015 compared with June 2014. In order of their contribution to growth (listed in reference table IOS1):

1. business services and finance increased by 3.4%
2. distribution, hotels and restaurants increased by 4.6%
3. transport, storage and communication increased by 4.4%
4. government and other services increased by 0.6%

Further detail on these movements can be found in the component analysis section.

**Figure 1: IoS contributions(1) to the month-on-month a year ago percentage change, June 2015**

UK



Source: Office for National Statistics

**Notes:**

1. Individual contributions may not sum to the total due to rounding.
2. Percentage change.
3. Please click on image to view larger version.

**Download chart**

[XLS](#) [XLS format](#)  
(28 Kb)

Between May 2015 and June 2015, as seen in Figure 2, the IoS increased by 0.5%.

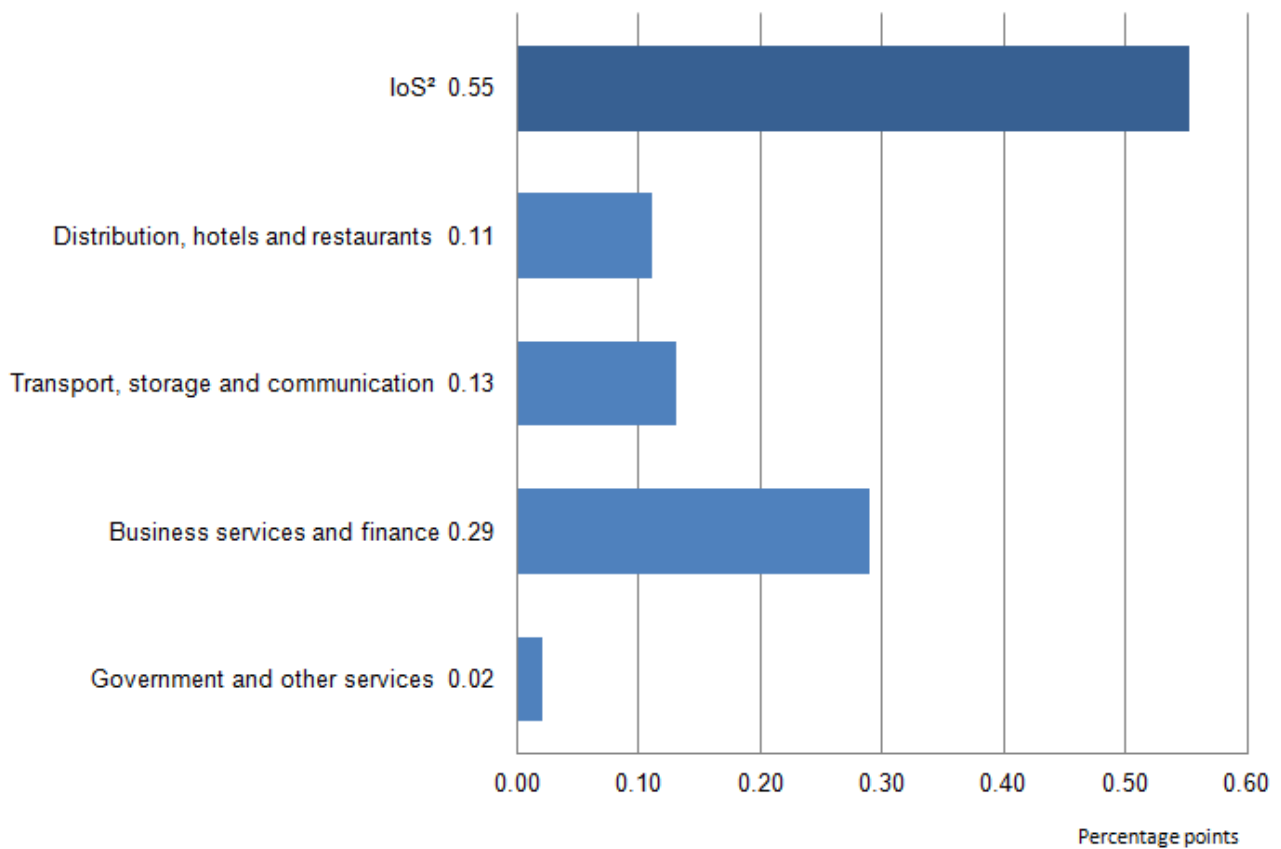
All 4 main components of the services industries increased in the most recent month compared with the previous month. In order of their contribution to growth (listed in reference table IOS1):

1. business services and finance increased by 0.7%
2. transport, storage and communication increased by 1.0%
3. distribution, hotels and restaurants increased by 0.6%
4. government and other services increased by 0.1%

More detail on individual components can be found in the IOSCOMP tables in the data section of this bulletin. The tables also provide information on the growth for the 3 months ending in June 2015 compared with the previous 3 months and compared with the 3 months ending June 2014.

**Figure 2: IoS contributions(1) to the month-on-month percentage change, June 2015**

UK



Source: Office for National Statistics

**Notes:**

1. Individual contributions may not sum to the total due to rounding.
2. Growth rates are calculated from 4 decimal place indices before being rounded to 1 decimal place. The growth rate in services is equal to 0.55 to 2 decimal places but 0.5 to 1 decimal place.
3. Please click on image to view larger version.

## Download chart

**XLS** [XLS format](#)

(29 Kb)

## Economic background

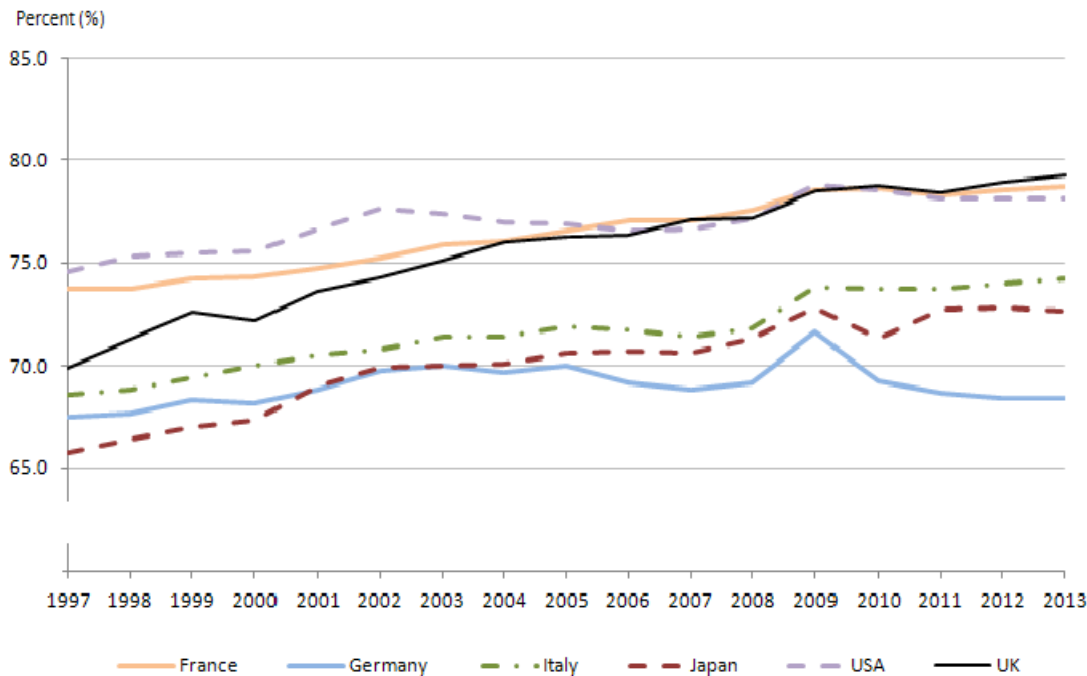
Total services grew by 2.8% between Quarter 2 (Apr to June) 2014 and Quarter 2 (Apr to June) 2015, and by 0.7% between Quarter 1 (Jan to Mar) 2015 and Quarter 2 (Apr to June) 2015. This is compared with growth rates of 2.6 % and 0.7 % for the economy as a whole.

Historically, the services industries have grown at a faster rate than all other headline industries. While GDP has grown at an average compound annual rate of 2.0% since 1997, services has grown at an average compound annual rate of 2.8% (more information can be found in [Second Estimate of Gross Domestic Product - Quarter 2 \(Apr to June\) 2015](#)). This has led to a continuing re-orientation of the economy towards services, despite productivity in the services industries rising more slowly than in the production industries (and manufacturing in particular) since 1997 (more information can be found in [Labour Productivity, Quarter 1 \(Jan to Mar\) 2015](#)). The higher output growth, therefore, reflects the increasing share of the labour force employed in services, which has grown from 73.0% to 79.0% between 1997 and 2014 ([Labour Market Statistics, August 2015](#), reference table EMP13).

Figure 3 shows the share of gross value added accounted for by services in the UK and in other G7 economies (more information on data for France, Germany, Italy, Japan and the USA can be found on the Organisation for Economic Co-operation and Development ([OECD website](#))). In 1997, the share of gross value added accounted for by services in the UK was just under 70%, around the middle of the range relative to the other G7 economies. By 2013, its share had risen to almost 80%, therefore the UK economy has become the most reliant on services among the G7 countries considered.

### Figure 3: Services as a percentage of total gross value added in comparable economies(1) to the UK

1997 to 2013



Source: Office for National Statistics, Organisation for Economic Co-operation and Development

#### Notes:

1. OECD data correct at 24 August 2015.
2. Please click on image to view larger version.

#### Download chart

[XLS](#) [XLS format](#)

(28.5 Kb)

In addition to strong long-run growth, the services industries were also less affected by the downturn in 2008 than other industries, such as production and construction and subsequently recovered more quickly. The services industries are mainly responsible for the recovery of the economy as a whole, being the only industry grouping to have surpassed its pre-downturn peak.

We have looked at the growth rates of the different industry groupings since 1997 in previous releases of the [Index of Services](#).

### GDP impact and components

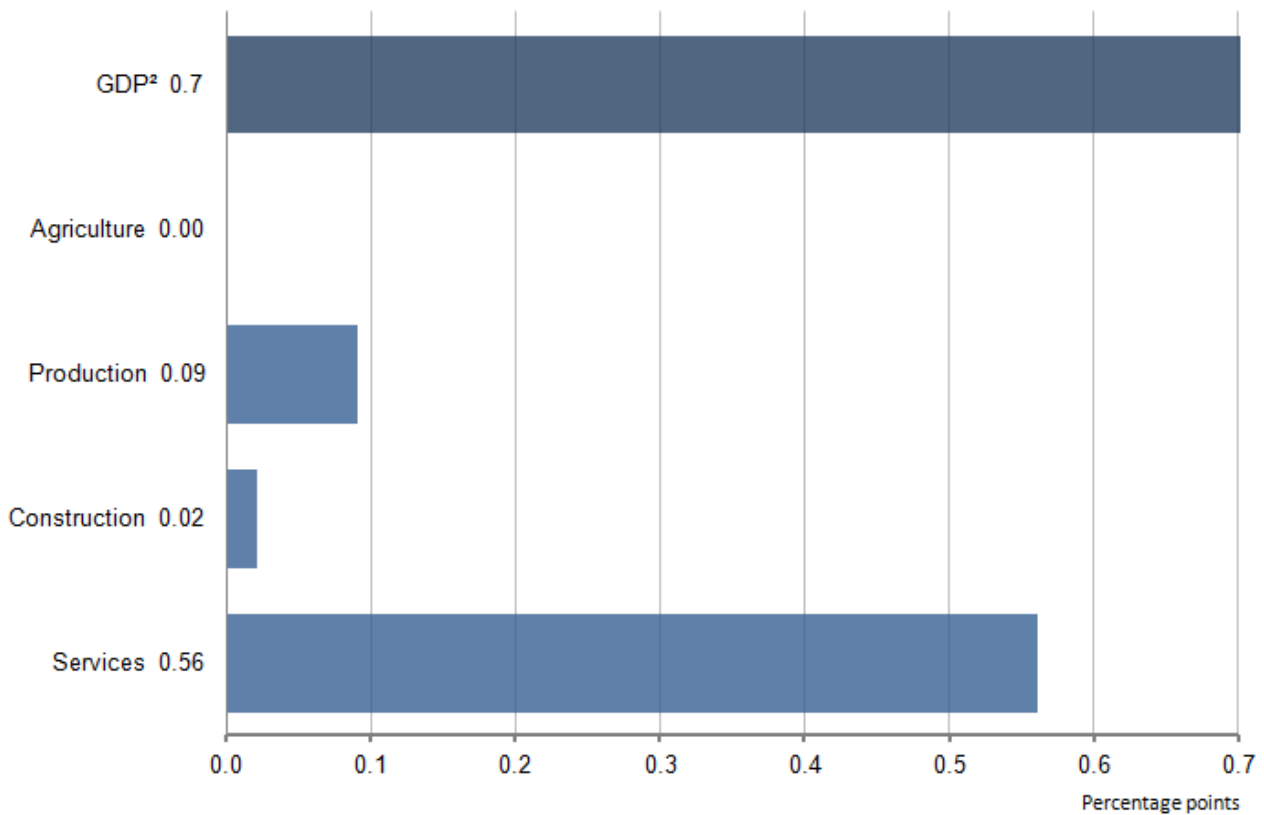
With a weight of 78.4%, the services industries are the largest industrial grouping in the output approach to measuring GDP. The releases for the short-term economic indicators that feed directly into the output approach to measuring GDP include a table detailing growth in the 4 main industrial

groupings (Table 2). This will aid understanding of the relationship between the individual short-term releases and GDP output.

In Quarter 2 (Apr to June) 2015, GDP was estimated to have increased by 0.7% compared with the previous quarter. The contribution an industry grouping makes to the GDP quarterly growth is dependent on the quarterly change in that industry grouping and its weight within the output approach to measuring GDP.

**Figure 4: GDP contribution(1) to the quarter-on-quarter percentage change, Quarter 2 (Apr to June) 2015**

UK



Source: Office for National Statistics

**Notes:**

1. Contributions are to output gross value added and therefore may not sum to the percentage change in GDP. More information on the difference between the 2 measures can be found in the Short Guide to National Accounts.
2. Percentage change to 1 decimal place.
3. Please click on image to view larger version.



**Download chart****XLS** [XLS format](#)

(25.5 Kb)

Monthly estimates are produced for each industrial grouping except agriculture. The June 2015 estimates for [production](#) and [construction](#) were published on 6 August 2015 and 14 August 2015 respectively. The [Second Estimate of Gross Domestic Product](#) for Quarter 2 (Apr to June) 2015 was published on 28 August 2015, alongside this bulletin.

**Table 2: GDP output component tables, Quarter 2 (Apr to June) 2015, chained volume measure, seasonally adjusted**

UK

Publication	% of GDP	Release date	Period of GDP	Percentage change	
				Most recent quarter on a year earlier	Most recent quarter on the previous quarter
Index of Production	14.6	06-Aug	Q2 <sup>1</sup> 2015	1.5	0.7
			Q1 <sup>2</sup> 2015	1.0	0.2
Construction output	6.4	14-Aug	Q2 2015	2.4	0.2
			Q1 2015	4.4	-0.2
Index of Services	78.4	28-Aug	Q2 2015	2.8	0.7
			Q1 2015	3.1	0.4
Retail Sales		20-Aug	Q2 2015	4.4	0.7
			Q1 2015	5.4	0.8
Agriculture	0.6		Q2 2015	0.2	-0.1
			Q1 2015	2.5	-2.3

**Table source:** Office for National Statistics

**Table notes:**

1. Q2 is Quarter 2 (Apr to June)
2. Q1 is Quarter 1 (Jan to Mar)

**Download table****XLS** [XLS format](#)

(28.5 Kb)

**Component analysis****Table 3: Growth rates and contributions(1) to the Index of Services, June 2015**

UK

Description	% of Services	Month on a year earlier Volume (SA <sup>2</sup> ) (%)	Contribution to services (% points)	Percentage change	
				Month on month growth Volume (SA) (%)	Contribution to services (% points)
Total services industries	100	3.0	3.0	0.5	0.5
Distribution, hotels and restaurants	18	4.6	0.8	0.6	0.1
Transport, storage and communication	13	4.4	0.6	1.0	0.1
Business services and finance	39	3.4	1.4	0.7	0.3
Government and other services	30	0.6	0.2	0.1	0.0

**Table source:** Office for National Statistics**Table notes:**

1. Individual contributions may not sum to the total due to rounding
2. SA = seasonally adjusted

**Download table****XLS** [XLS format](#)

(27.5 Kb)

**Distribution, hotels and restaurants**

The index of distribution, hotels and restaurants increased by 4.6% in June 2015 compared with June 2014, following an increase of 4.2% in May 2015 compared with the same month a year earlier. The main contributors to the increase were: retail trade, except of motor vehicles and motorcycles, which rose by 4.0%; wholesale and retail trade and repair of motor vehicles and motorcycles, which rose by 9.6%; and accommodation, which rose by 13.6%.

### **Transport, storage and communication**

The index of transport, storage and communication increased by 4.4% in June 2015 compared with June 2014, following an increase of 4.0% in May 2015 compared with the same month a year earlier. The main contributors to the increase were: publishing audiovisual and broadcasting activities, which rose by 11.3%; computer programming, consultancy and related activities, which rose by 6.0%; and land transport, which rose by 3.3%.

### **Business services and finance**

The index of business services and finance increased by 3.4% in June 2015 compared with June 2014, following an increase of 3.0% in May 2015 compared with the same month a year earlier. The main contributors to the increase were: other professional service activities, which rose by 5.7%; administrative and support services activities, which rose by 4.4%; and real estate activities, which rose by 1.9%.

### **Government and other services**

The index of government and other services increased by 0.6% in June 2015 compared with June 2014, following an increase of 0.5% in May 2015 compared with the same month a year earlier. The main contributors to the increase were: human health and social work activities, which rose by 2.0%; other service activities, which rose by 2.5%; and activities of households as employers of domestic personnel, which rose by 7.4%.

### **Revisions**

The Index of Services (IoS) follows the [National Accounts Revisions policy \(43.3 Kb Pdf\)](#). Revisions are caused by a number of factors including, but not limited to:

- revisions to source data due to late responses
- actual data replacing forecast data
- revisions to seasonal factors that are re-estimated every period

More information on IoS revisions is available on the [Index of Services Methods](#) page.

We produce revisions triangles of services growth to provide users with one indication of the reliability of this main indicator. Statistical tests are performed on the average revision to test if it is statistically significantly different to 0. Further information can be found in background note 15.

In this release of data, the earliest period open to revision is April 2015. The growth rate for April 2015 compared with April 2014 (2.8%) was unrevised. The month-on-month growth rate for April 2015 compared with March 2015 (0.2%) was also unrevised. The growth rate for May 2015

compared with May 2014 was revised down 0.1% from 2.7% to 2.6%. The largest contributor to the revision was business services and finance. The month-on-month growth rate for May 2015 compared with April 2015 was revised down 0.1% from 0.3% to 0.2%. The largest contributor to the revision was business services and finance.

Further detail on the revisions to the IoS components can be found in the RIOS1 tables in the [data section](#) of this publication.

## **Industry spotlight: Accounting, bookkeeping and auditing activities; tax consultancy**

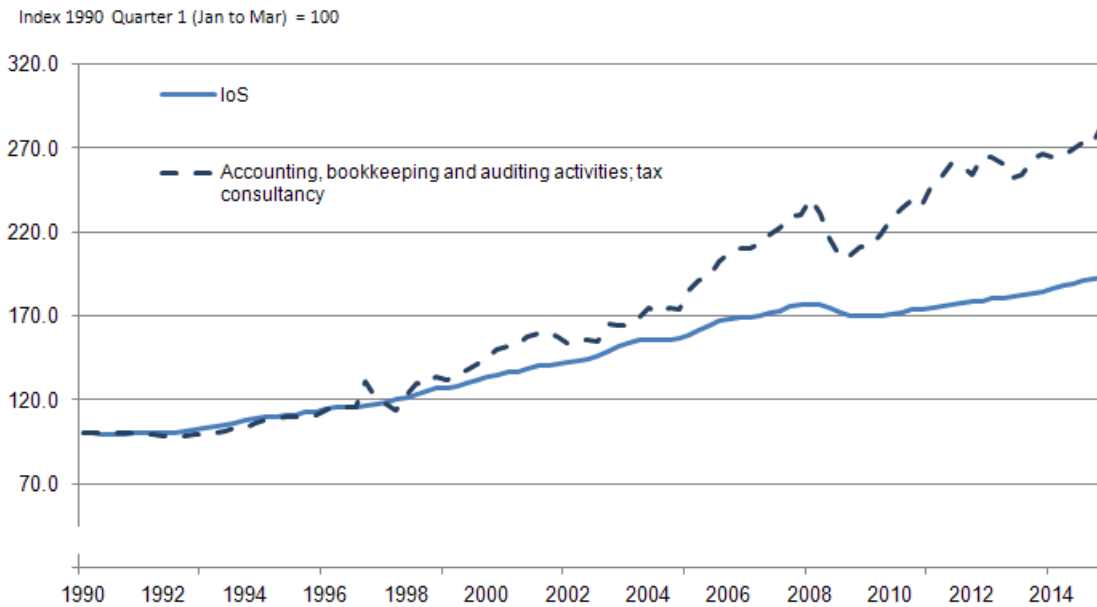
According to the UK Standard Industrial Classification 2007 (SIC2007), industry 69.2 covers activities such as bookkeeping and the preparation or examination of financial accounts. It also covers tax consultancy, which includes both the preparation of tax returns (for individuals or businesses) and advisory activities, including representation on behalf of clients before tax authorities.

In 2012, the industry's share of whole economy output and total intermediate consumption were roughly the same at 1.1% and 1.0% respectively ([Second Estimate of GDP – Quarter 2 \(Apr to June\) 2015](#) and [Input-Output Supply and Use tables, 2014 edition](#)). Between 1997 and 2012, these shares have increased slightly, signalling stronger growth relative to the remainder of the economy.

This industry is included under the legal and accounting activities grouping within services, along with legal activities, which was examined in [last month's index of services release](#). It accounted for around 40% of the output of the legal and accounting activities grouping in 2014.

## Figure 5: Index of Services and accounting, bookkeeping and auditing activities; tax consultancy

UK, 1990 to 2015



Source: Office for National Statistics

### Notes:

1. Q1 is Quarter 1 (Jan to Mar).
2. Please click on image to view larger version.

### Download chart

[XLS](#) [XLS format](#)

(34 Kb)

The performance of this industry was similar to that of the entire services industries between 1990 and 1996. However, it subsequently grew at a compound average annual growth rate of 6.4% between 1997 and 2007, a faster rate compared with a compound growth rate of 3.9% for the entire services industries. Compound average growth is the rate at which a series would have increased or decreased if it had grown or fallen at a steady rate over a number of periods.

The economic downturn had a large impact on the industry, with output contracting by 11.5% between the economy's peak in Quarter 1 (Jan to Mar) 2008 and the economy's trough in Quarter 3 (July to Sept) 2009. In contrast, the entire services industry contracted by just 3.9% over the same period ([Second Estimate of GDP – Quarter 2 \(Apr to June\) 2015](#)). Between the 2008 and 2009 calendar years, the number of new accountancy businesses created fell by 3.4% while the number of accountancy firms that ceased to trade rose by 11.3%, coinciding with this contraction in output ([Business Demography, 2013](#)). In 2010, this industry started to recover strongly and in Quarter 2

(Apr to June) 2015 output was 18.9% above its pre-downturn peak ([Second Estimate of GDP – Quarter 2 \(Apr to June\) 2015](#)).

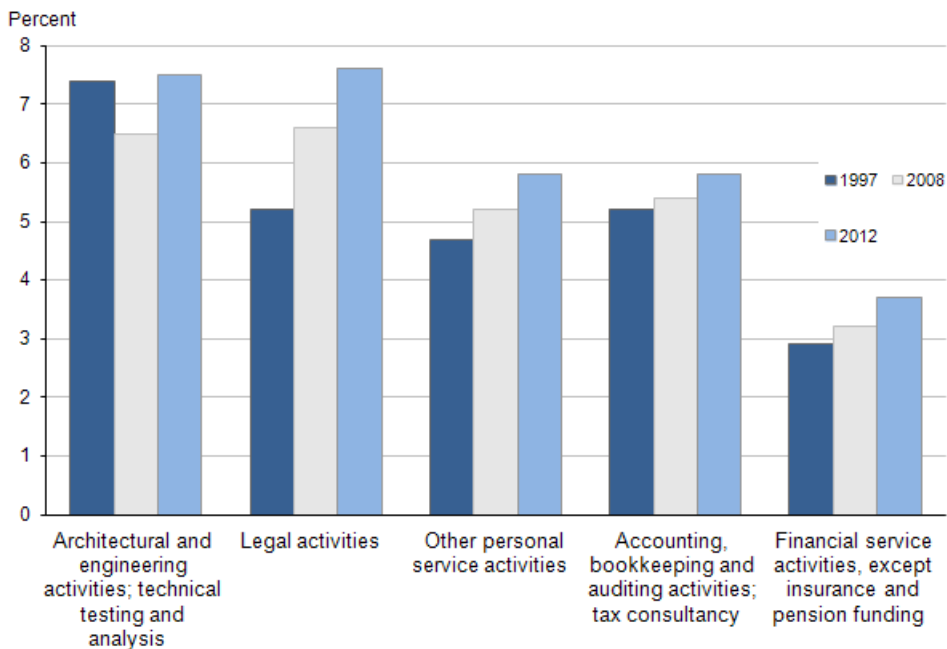
The services produced by this industry are often used in the production process (as intermediate consumption) by a wide range of industries and in 2012, this totalled around £15 billion. Around 35% of the intermediate consumption of the industry's products can be attributed to just 5 industries, shown in Figure 6, which are all also within the services industries.

The industries which use the highest amount of its products as a share of their intermediate consumption are the legal activities and the architectural and engineering activities; technical testing and analysis industries (at 7.6% and 7.5% of their total intermediate consumption, respectively) ([Input-Output Supply and Use tables, 2014 edition](#)).

Between 1997 and 2012, the share of the 5 industries' total intermediate consumption allocated to industry 69.2's products was growing steadily with the exception of architectural and engineering activities (industry 71) which contracted quite sharply during the economic downturn ([Input-Output Supply and Use tables, 2014 edition](#)).

### Figure 6: The top 5 consumers of accounting, bookkeeping and auditing activities; tax consultancy (percentage total of their intermediate consumption)

UK, 1997 to 2012



Source: Office for National Statistics

#### Notes:

1. Please click on image to view larger version.

## Download chart

**XLS** [XLS format](#)

(27 Kb)

## Background notes

### 1. What's new

#### Blue Book 2015

The Index of Services for July 2015 to be published on 30 September 2015 will include revisions back to 1997. This will be in line with the open revision period for the 2015 Blue Book publication in October 2015. The estimates will also be consistent with the Quarterly National Accounts published on 30 September 2015.

These annual changes will include updating the reference year from 2011=100 to 2012=100, along with adding an additional year of chain-linking weights for 2012. As part of the annual GDP balancing process annual adjustments will also be made to the services sector to maintain coherence with the balanced GDP figures. ONS has developed an automatic function for assigning the annual adjustments to gross value added. This is designed to be as faithful as possible to the quarterly paths whilst adjusting the overall annual growth rate.

#### VAT Project update

An article titled "[Feasibility study into the use of HMRC turnover data within Short-term Output Indicators and National Accounts](#)" has been published (14 August 2015). The project is exploring ways in which HM Revenue & Customs (HMRC) administrative data could be used to quality assure, supplement or replace the current turnover-based ONS surveys. This article is the first of a series of planned articles into this work.

### 2. What do you think?

As a user of our statistics we would welcome your feedback on this publication. If you would like to get in touch please contact us via email: [ios.enquiries@ons.gsi.gov.uk](mailto:ios.enquiries@ons.gsi.gov.uk).

### 3. Special events

We maintain a list of candidate special events in the [Special Events Calendar](#). As explained in our [Special Events policy](#), it is not possible to separate the effects of special events from other changes in the series.

### 4. Understanding the data

#### Short guide to the Index of Services

The Index of Services shows the monthly movements in the gross value added (GVA) of the service industries (2007 Standard Industrial Classification (SIC 2007) sections G to T). These

industries account for around 78% of gross domestic product (GDP) in 2011. The index is estimated using the same data sources and national accounts methodology as the quarterly estimate of services industries' gross value added within the output approach to measuring GDP (GDP (O)). These consist of the distribution, hotels and restaurant industries (SIC 2007 sections G and I); transport, storage and communication (sections H and J); business services and finance (sections K to N); and government and other services (sections O to T).

## 5. International comparison

International comparison with the IoS is difficult, as most comparable economies don't produce equivalent estimates. [Eurostat turnover in services](#) estimates are not comparable with the IoS, as they exclude the wholesale and retail trade; furthermore, most of the estimates are only available quarterly. The [USA](#) also produces services output estimates, but only on a quarterly basis, with a 4 month lag time. [Japan](#) has a direct equivalent of the IoS, but the estimates are not seasonally adjusted. The closest equivalent estimates are from [Canada](#), which produces a monthly output estimate of GDP with a breakdown by industry (including an aggregate for services). There are also comparable quarterly estimates from [Sweden](#) and [Ireland](#).

## 6. Short guide to national accounts

The national accounts provide an integrated description of all economic activity within the economic territory of the UK, including activity involving both domestic units (that is, individuals and institutions resident in the UK) and external units (those resident in other countries). In addition to being comprehensive, the accounts are fully integrated and internally consistent. More information can be found in [UK national accounts: a short guide \(105.5 Kb Pdf\)](#).

## 7. How our statistics explain the economy

The IoS is mentioned in an [interactive version of 14 ways ONS statistics help you understand the economy](#), which was released on our website on 27 June 2014, alongside [Quarterly National Accounts for Quarter 1 \(Jan to Mar\) 2014](#).

## 8. Interpreting the data

Some monthly data are volatile. When looking at growth rates, the headline IoS figures focus on the percentage change between the most recent month-on-a-year earlier and the most recent 3 months-on-a-year earlier.

The monthly Index of Services statistical bulletin is usually published on the same days as the Gross Domestic Product Preliminary Estimate statistical bulletin, the Second Estimate of Gross Domestic Product statistical bulletin or the Quarterly National Accounts statistical bulletin.

The data for the IoS in this statistical bulletin are generally consistent with the [Second Estimate of Gross Domestic Product](#) for Quarter 2 (Apr to June) 2015, published on 28 August 2015. However, rounding can sometimes cause differences between the 3-monthly growth rates presented in this release, compared with the quarterly growth rates presented in Second Estimate of Gross Domestic Product. Data for the retail industry are broadly comparable with the [Retail Sales release](#), published on 20 August 2015, but as the 2 series operate under



different revisions policies, there can be timing differences in the updating of the 2 series. Also, adjustments to the data within the IoS release are sometimes made at the time of the Blue Book to improve the coherence of the 3 approaches to measuring GDP. Therefore, inconsistencies between the 2 series are not unusual but tend to be small. There are also conceptual and coverage differences between retail sales and retail output which can lead to apparent inconsistencies.

## 9. Definitions and explanations

Definitions found within the main statistical bulletin are listed:

### **Index number**

An index number is a number which indicates the change in magnitude relative to the magnitude at a specified point, the latter usually taken as 100. For example, the level of services for June 2015 is given in Table 1 as 110.2. This means that services output was 10.2% higher than the average in the reference period, which is currently 2011.

### **Seasonal adjustment**

The index numbers in this statistical bulletin are all seasonally adjusted. This aids interpretation by removing annually recurring fluctuations, for example, due to holidays or other regular seasonal patterns. Unadjusted data are also available.

Seasonal adjustment removes regular variation from a time series. Regular variation includes effects due to month lengths, different activity near particular events such as shopping activity before Christmas, and regular holidays such as the May bank holiday.

Some features of the calendar are not regular each year, but are predictable if we have enough data, for example, the number of certain days of the week in a month may have an effect, or the impact of the timing of Easter. As Easter changes between March and April, we can estimate its effect on time series and allocate it between March and April depending on where Easter falls. Estimates of the effect of the day of the week and Easter are used respectively to make trading day and Easter adjustments prior to seasonal adjustment.

X-13-ARIMA-SEATS is the current seasonal adjustment software used for the IoS.

### **Value (current price)**

Economic transactions involve the production of goods and the sale of goods and services (commodities). The monetary value (or current price) of these transactions is a product of the quantity produced or sold and the unit price. In a particular period, the total (aggregate) value of all transactions taking place in the economy is simply the sum of the individual transaction values in that period. The current price is sometimes referred to as the "nominal" price.

### **Volume (constant price)**

When it comes to comparing the difference in aggregate values between 2 time periods, the observed movement is generally a combination of changes in quantity and changes in price. In a lot of cases, the interest of users of economic data lies in understanding the degree to which economic growth is being driven by changes in quantities (that is, physical volumes of production and consumption). It is standard practice to present many economic statistics as volume series (showing changes in the level of the series that have not been affected by changes in price) and such series are referred to as "at constant prices" or "real" prices.

## **Deflation**

The process of removing price changes from a value series and converting to a volume series is known as deflation. All index numbers presented in this bulletin are volume measures and have had the effect of price changes removed.

## **Chained volume measures**

The indices in this bulletin are presented as "chained volume" measures, meaning that successive volume estimates have been linked (or chained) together. Annual chain-linking was introduced in 2003 and is considered preferable to producing standard volume series, as chained volume measures more accurately reflect volume changes over time. More information on chain-linking can be found in the [Tuke and Reed \(2001\) \(92.8 Kb Pdf\)](#) article, and a paper on chain-linking weights in the output approach to measuring GDP can be found on the [Methods and Sources](#) page.

## **Gross domestic product (GDP)**

The total value of production activity in the economic territory. It is the balancing item on the production account for the whole economy. Domestic product can be measured gross or net of consumption of fixed capital (or depreciation). It is presented in the accounts at market (or purchasers') prices. A further distinction is that it can be at current prices or chained volume measures.

## **10. Methods**

[Index of Services methodology](#) can be found on our website.

## **11. Composition of the data**

The IoS uses a wide variety of different data, from many sources, which are produced on either an annual, quarterly or monthly basis.

Some of the indicators are derived using current price turnover deflated by a suitable price index. This includes data from the monthly business survey (MBS): an ONS short-term survey on different parts of the economy. It is one of the main data sources used in the compilation of the IoS.

More information on monthly business survey data can be found within the [Economic and Labour Market Review release \(2.65 Mb Pdf\)](#).

Other sources use direct volume measures that don't need to be deflated, such as Civil Aviation Authority data for air transport. Other proxies, such as employment numbers, are also used. This is the case with Public Sector Employment and Workforce Jobs data.

Where monthly data are not available (for example, when data are delivered quarterly or annually), monthly estimates are derived by forecasting data. This is done using the X-13-ARIMA-SEATS forecasting method and interpolating a monthly path using a cubic spline.

An X-13-ARIMA-SEATS forecast is also used where actual data at industry level are not available for the latest period (a lower proportion of actual data are available for the latest month). When the forecast is replaced by actual data, this may lead to revisions to the published data.

The IoS adheres to the [Government Statistical Service Disclosure Control Policy \(337 Kb Word document\)](#). More information can be found in the [Quality and Methodology Information \(QMI\) \(207.3 Kb Pdf\)](#) report.

## 12. Response rates

Approximately 42% of the IoS estimates are based on data collected via our monthly business survey (MBS). In addition, approximately 7% of the IoS estimates are collected via our retail sales inquiry (RSI). The remainder is based on data received from other ONS sources and external data sources. The MBS and RSI response rates for data included in this publication are presented for the current months and the 3 months prior in Table 4. The response rates for the previous periods are updated to reflect the current level of response, incorporating data from late returns. There are 2 response rates included; the first is a percentage of the sampled turnover returned and the other is a percentage of the amount of questionnaire forms returned.


**Table 4: Survey response rates, Mar 2015 to June 2015**

UK

Period	Response rates (%)			
	Mar 2015	Apr 2015	May 2015	June 2015
<b>Monthly Business Survey (Services)</b>				
Turnover	95.8	94.6	94.2	87.2
Questionnaire	84.6	84.0	82.6	73.5
<b>Retail Sales Inquiry</b>				
Turnover	99.0	98.7	99.0	97.7
Questionnaire	77.3	77.5	77.3	74

**Table source:** Office for National Statistics

### Download table

 [XLS format](#)  
(27.5 Kb)

[Historical MBS response rates](#) for the services industries as at the time of the relevant publication are also available back to 2010.

## 13. Basic quality information

Some general information on the quality of the Index of Services (IoS) can be found in the "Understanding the Index of Services" section in the main part of this statistical bulletin.

Additionally, a [Quality and Methodology Information \(QMI\)](#) report for the IoS was published on 11 February 2015. The report pulls together qualitative information on the 5 Eurostat criteria of quality: relevance, accuracy, timeliness and punctuality, accessibility and clarity, and comparability and coherence, and provides a summary of the methods used to compile the IoS output, describing the strengths and limitations of the estimates produced.

Further quality information, including details of the quality adjustments process for IoS, was published on 31 October 2014 and can be found on the [Index of Services methods](#) page on our website.

## 14. National accounts revisions policy

Main documentation explaining the national accounts [revisions policy \(43.3 Kb Pdf\)](#) is available.

## 15. Revisions triangles

SIC 2007 revisions triangles are contained in a zip folder. This folder can be found within the data section of this bulletin.

Revisions to data provide one indication of the reliability of main indicators. A statistical test has been applied to the average revision to find out if it is statistically significantly different from 0. An average revision close to 0 is desirable as it suggests that revisions are not predictable in any one direction. The result of the test is that the average revision is not statistically significantly different from 0.

Table 5 presents a summary of the differences published between June 2009 and June 2014 and the estimates published 12 months later.


**Table 5: Revisions between first publication and estimates 12 months later**

UK

	Value in latest period	Average over the last 60 months	Percentage change Average over the last 60 months without regard to sign (average absolute revision)
Index of Services 3 month on 3 month growth rate	0.7	-0.06	0.17
Index of Services 1 month on 1 month growth rate	0.5	-0.03	0.18

**Table source:** Office for National Statistics

### Download table

 [XLS format](#)  
(25.5 Kb)

## 16. Publication policy

Details of the policy governing the release of new data are available from our media relations office. There is also a [Pre Release Access List](#) of those given pre-publication access to the contents of this release.

## 17. Accessing data

The data presented in the tables of this statistical bulletin are also available to download from the data section of this publication. A complete run of data is available as a [time series dataset](#) on our website.

We provide an analysis of past revisions in the IoS and other statistical bulletins; more information can be found in [Revisions information in ONS First Releases](#).

## 18. Following ONS

You can follow us on [Twitter](#) and [Facebook](#).

## 19. Code of Practice for Official Statistics

National Statistics are produced to high professional standards set out in the [Code of Practice for Official Statistics](#). They undergo regular quality assurance reviews to ensure that they meet customer needs. They are produced free from any political interference.

The UK Statistics Authority has designated these statistics as National Statistics, in accordance with the Statistics and Registration Service Act 2007 and signifying compliance with the Code of Practice for Official Statistics.

Designation can be broadly interpreted to mean that the statistics:

- meet identified user needs
- are well explained and readily accessible
- are produced according to sound methods
- are managed impartially and objectively in the public interest

Once statistics have been designated as National Statistics it is a statutory requirement that the Code of Practice shall continue to be observed.

## 20. Next publication: Wednesday 30 September 2015

**Issued by:** Office for National Statistics, Government Buildings, Cardiff Road, Newport NP10 8XG

## 21. Media contact:

Media Relations office: +44 (0) 845 6041858

Emergency on-call: +44 (0)7867 906553

Email: [media.relations@ons.gsi.gov.uk](mailto:media.relations@ons.gsi.gov.uk)

### Contact us:

+44 (0)845 6013034

[info@ons.gsi.gov.uk](mailto:info@ons.gsi.gov.uk)

22. Details of the policy governing the release of new data are available by visiting [www.statisticsauthority.gov.uk/assessment/code-of-practice/index.html](http://www.statisticsauthority.gov.uk/assessment/code-of-practice/index.html) or from the Media Relations Office email: [media.relations@ons.gsi.gov.uk](mailto:media.relations@ons.gsi.gov.uk)

These National Statistics are produced to high professional standards and released according to the arrangements approved by the UK Statistics Authority.

## Copyright

© Crown copyright 2015

You may use or re-use this information (not including logos) free of charge in any format or medium, under the terms of the Open Government Licence. To view this licence, visit [www.nationalarchives.gov.uk/doc/open-government-licence/](http://www.nationalarchives.gov.uk/doc/open-government-licence/) or write to the Information Policy Team, The National Archives, Kew, London TW9 4DU, or email: [psi@nationalarchives.gsi.gov.uk](mailto:psi@nationalarchives.gsi.gov.uk).

This document is also available on our website at [www.ons.gov.uk](http://www.ons.gov.uk).

## Statistical contacts

Name	Phone	Department	Email
Robert Doody	+44 (0)1633 455803	Office for National Statistics	<a href="mailto:ios.enquiries@ons.gsi.gov.uk">ios.enquiries@ons.gsi.gov.uk</a>

---

### Next Publication Date:

30 September 2015

### Issuing Body:

Office for National Statistics

### Media Contact Details:

Telephone: 0845 604 1858  
(8.30am-5.30pm Weekdays)

Emergency out of hours (limited service): 07867 906553

Email:

[media.relations@ons.gsi.gov.uk](mailto:media.relations@ons.gsi.gov.uk)

Industry sections (SIC2007)						
Section	Total service industries	Distribution hotels and restaurants	Transport, storage and communication	Business services and finance	Government and other services	
	G-T	G and I	H and J	K-N	O-T	
<b>2011 weights</b>	<b>1000</b>	<b>178</b>	<b>133</b>	<b>391</b>	<b>298</b>	
	S2KU	S2MV	KI7B	KI7L	KI7T	
2010	98.0	98.1	98.2	96.9	99.1	
2011	100.0	100.0	100.0	100.0	100.0	
2012	102.0	101.5	101.4	103.0	101.4	
2013	104.0	105.1	102.8	105.6	101.7	
2014	107.1	110.1	105.5	109.6	102.8	
2013 Jun	103.6	105.3	102.2	105.2	101.3	
Jul	104.0	105.8	102.6	105.4	101.6	
Aug	104.3	106.1	102.5	106.1	101.7	
Sep	104.5	106.2	102.7	106.3	102.0	
Oct	104.6	105.7	102.1	106.9	102.3	
Nov	105.0	106.8	102.9	107.1	102.0	
Dec	105.1	107.1	103.4	107.1	102.1	
2014 Jan	105.3	107.4	103.7	107.1	102.4	
Feb	105.6	108.2	103.0	107.7	102.4	
Mar	106.1	109.3	103.3	108.4	102.5	
Apr	106.4	109.1	104.5	108.7	102.7	
May	106.8	109.6	105.1	109.1	102.9	
Jun	107.1	109.8	105.7	109.4	102.9	
Jul	107.4	110.0	106.0	109.9	103.0	
Aug	107.3	110.6	106.2	109.5	103.1	
Sep	107.9	111.2	106.7	110.5	102.9	
Oct	108.2	111.3	107.3	111.1	103.0	
Nov	108.3	112.2	106.9	111.3	102.7	
Dec	109.0	112.8	107.9	112.0	103.2	
2015 Jan	108.7	113.0	108.1	111.4	103.0	
Feb	109.0	113.4	108.6	111.5	103.4	
Mar	109.2	113.7	107.7	112.0	103.4	
Apr	109.4	114.4	108.6	111.9	103.4	
May	109.6	114.2	109.3	112.4	103.5	
Jun	110.2	114.9	110.3	113.2	103.5	
<b>Percentage change, latest year on previous year</b>						
	S222	S243	KI77	KI7G	KI7O	
2010	1.4	1.6	3.6	1.2	0.6	
2011	2.1	2.0	1.8	3.2	0.9	
2012	2.0	1.5	1.4	3.0	1.4	
2013	1.9	3.5	1.4	2.5	0.3	
2014	3.0	4.8	2.7	3.8	1.1	
<b>Percentage change, latest month on same month a year ago</b>						
	S26Q	S28R	KI7A	KI7I	KI7Q	
2013 Jun	2.7	5.5	2.9	3.3	0.2	
Jul	1.7	3.9	2.4	2.2	-0.5	
Aug	1.2	3.1	0.8	2.2	-1.0	
Sep	1.8	2.9	1.7	2.8	-0.1	
Oct	1.9	3.3	-0.1	2.8	0.7	
Nov	2.5	4.3	1.9	3.1	0.7	
Dec	2.9	5.6	2.4	3.3	1.0	
2014 Jan	2.6	5.7	1.0	2.9	1.1	
Feb	2.1	3.8	-0.7	3.3	0.8	
Mar	2.8	5.5	0.3	3.8	0.8	
Apr	2.8	4.9	1.5	3.7	0.9	
May	3.1	4.3	2.2	3.9	1.5	
Jun	3.3	4.2	3.4	4.0	1.6	
Jul	3.3	4.0	3.3	4.2	1.4	
Aug	2.9	4.3	3.6	3.2	1.3	
Sep	3.2	4.6	3.9	3.9	1.0	
Oct	3.4	5.3	5.2	4.0	0.7	
Nov	3.2	5.0	3.9	3.9	0.7	
Dec	3.7	5.4	4.4	4.6	1.1	
2015 Jan	3.2	5.2	4.3	4.0	0.6	
Feb	3.2	4.8	5.5	3.5	1.0	
Mar	2.9	4.0	4.2	3.4	0.9	
Apr	2.8	4.9	3.9	2.9	0.7	
May	2.6	4.2	4.0	3.0	0.5	
Jun	3.0	4.6	4.4	3.4	0.6	

1 The IOS output is designated as a National Statistic, however, a number of individual series are still experimental.

2 Indices reflect values measured at basic prices, which exclude "taxes less subsidies on products".

3 Estimates cannot be regarded as accurate to the last digit shown.

4 Any apparent inconsistencies between the index numbers and the percentage changes shown in these tables are due to rounding.

5 A complete run of data is available on the ONS website as a [Time series dataset](#)



continued

Industry sections (SIC2007)

Section	Total service industries	Distribution hotels and restaurants	Transport, storage and communication	Business services and finance	Government and other services
	G-T	G and I	H and J	K-N	O-T
<b>2011 weights</b>	<b>1000</b>	<b>178</b>	<b>133</b>	<b>391</b>	<b>298</b>

Percentage change, latest month on previous month

	S222	S243	KI77	KI7G	KI7O
2013 Jun	-	0.2	-0.5	0.2	-0.1
Jul	0.3	0.4	0.4	0.2	0.3
Aug	0.3	0.3	-0.1	0.6	0.1
Sep	0.2	0.2	0.2	0.3	0.2
Oct	0.1	-0.5	-0.6	0.5	0.3
Nov	0.3	1.1	0.8	0.3	-0.2
Dec	0.1	0.2	0.5	-	-
2014 Jan	0.2	0.3	0.3	-	0.3
Feb	0.3	0.7	-0.7	0.6	-
Mar	0.5	1.0	0.3	0.6	0.1
Apr	0.3	-0.2	1.1	0.3	0.2
May	0.4	0.4	0.6	0.4	0.2
Jun	0.2	0.2	0.6	0.3	-
Jul	0.3	0.2	0.3	0.4	0.1
Aug	-	0.5	0.2	-0.4	-
Sep	0.5	0.5	0.5	0.9	-0.1
Oct	0.3	0.1	0.6	0.6	0.1
Nov	-	0.8	-0.4	0.1	-0.3
Dec	0.6	0.6	1.0	0.7	0.5
2015 Jan	-0.2	0.1	0.2	-0.6	-0.2
Feb	0.3	0.4	0.5	0.1	0.4
Mar	0.1	0.2	-0.9	0.5	-
Apr	0.2	0.7	0.9	-0.1	-
May	0.2	-0.2	0.6	0.4	0.1
Jun	0.5	0.6	1.0	0.7	0.1

Percentage change, latest 3 months on same 3 months a year ago

	S2G6	S2I7	KI7C	KI7J	KI7R
2013 Jun	2.0	4.0	1.6	2.3	0.4
Jul	1.9	4.2	1.8	2.2	-
Aug	1.9	4.2	2.0	2.6	-0.5
Sep	1.6	3.3	1.6	2.4	-0.6
Oct	1.6	3.1	0.8	2.6	-0.2
Nov	2.0	3.5	1.2	2.9	0.4
Dec	2.4	4.4	1.4	3.1	0.8
2014 Jan	2.7	5.2	1.8	3.1	0.9
Feb	2.5	5.0	0.9	3.2	1.0
Mar	2.5	5.0	0.2	3.3	0.9
Apr	2.6	4.7	0.4	3.6	0.9
May	2.9	4.9	1.3	3.8	1.1
Jun	3.0	4.5	2.4	3.9	1.3
Jul	3.2	4.2	3.0	4.1	1.5
Aug	3.2	4.2	3.4	3.8	1.5
Sep	3.1	4.3	3.6	3.8	1.2
Oct	3.2	4.7	4.2	3.7	1.0
Nov	3.3	5.0	4.3	3.9	0.8
Dec	3.4	5.2	4.5	4.2	0.8
2015 Jan	3.4	5.2	4.2	4.1	0.8
Feb	3.4	5.1	4.7	4.0	0.9
Mar	3.1	4.6	4.6	3.6	0.8
Apr	3.0	4.5	4.5	3.2	0.9
May	2.8	4.4	4.0	3.1	0.7
Jun	2.8	4.6	4.1	3.1	0.6

1 The IOS output is designated as a National Statistic, however, a number of individual series are still experimental.  
 2 Indices reflect values measured at basic prices, which exclude "taxes less subsidies on products".  
 3 Estimates cannot be regarded as accurate to the last digit shown.  
 4 Any apparent inconsistencies between the index numbers and the percentage changes shown in these tables are due to rounding.  
 5 A complete run of data is available on the ONS website as a [Time series dataset](#)

Sources: For further information on these data please telephone 01633 455803; fax 01633 455300 or e-mail ios.enquiries@ons.gov.uk

continued

Industry sections (SIC2007)						
	Total service industries	Distribution hotels and restaurants	Transport, storage and communication	Business services and finance	Government and other services	
Section	G-T	G and I	H and J	K-N	O-T	
<b>2011 weights</b>	<b>1000</b>	<b>178</b>	<b>133</b>	<b>391</b>	<b>298</b>	
<b>Percentage change, latest 3 months on previous 3 months</b>						
	S2BG	S2DH	KI7D	KI7K	KI7S	
2013 Jun	0.5	1.6	-0.4	0.7	-0.1	
Jul	0.4	1.4	-0.6	0.7	-0.3	
Aug	0.5	1.4	-0.4	0.8	-0.1	
Sep	0.6	1.1	-	0.9	0.3	
Oct	0.7	0.6	-0.1	1.1	0.6	
Nov	0.7	0.5	0.1	1.2	0.6	
Dec	0.6	0.5	0.1	1.0	0.4	
2014 Jan	0.6	1.0	0.9	0.7	0.2	
Feb	0.6	1.2	0.8	0.5	0.2	
Mar	0.7	1.7	0.5	0.7	0.3	
Apr	0.9	1.7	0.3	1.1	0.4	
May	1.1	1.6	0.9	1.3	0.4	
Jun	1.0	1.1	1.7	1.3	0.4	
Jul	1.0	0.9	1.9	1.1	0.4	
Aug	0.7	0.7	1.6	0.8	0.3	
Sep	0.7	1.0	1.2	0.8	0.2	
Oct	0.7	1.1	1.1	0.8	0.1	
Nov	0.8	1.3	0.9	1.2	-0.1	
Dec	0.9	1.4	1.0	1.4	-	
2015 Jan	0.8	1.5	0.8	1.1	-	
Feb	0.7	1.4	1.2	0.6	0.3	
Mar	0.4	1.1	0.7	0.1	0.3	
Apr	0.5	1.0	0.6	0.2	0.4	
May	0.4	0.9	0.3	0.4	0.2	
Jun	0.7	1.0	1.2	0.8	0.2	

- 1 The IOS output is designated as a National Statistic, however, a number of individual series are still experimental.
- 2 Indices reflect values measured at basic prices, which exclude "taxes less subsidies on products".
- 3 Estimates cannot be regarded as accurate to the last digit shown.
- 4 Any apparent inconsistencies between the index numbers and the percentage changes shown in these tables are due to rounding.
- 5 A complete run of data is available on the ONS website as a [Time series dataset](#)

Sources: For further information on these data please telephone 01633 455803; fax 01633 455300 or e-mail [ios.enquiries@ons.gov.uk](mailto:ios.enquiries@ons.gov.uk)

Industry sections (SIC2007)					
	Total service industries	Distribution hotels and restaurants	Transport, storage and communication	Business services and finance	Government and other services
Section	G-T	G and I	H and J	K-N	O-T
<b>2011 weights</b>	<b>1000</b>	<b>178</b>	<b>133</b>	<b>391</b>	<b>298</b>
	S2KU	S2MV	KI7B	KI7L	KI7T
2010	-	-	-	-	-
2011	-	-	-	-	-
2012	-	-	-	-	-
2013	-	-	-	-	-
2014	-	-	-	-	-
2013 May	-	-	-	-	-
Jun	-	-	-	-	-
Jul	-	-	-	-	-
Aug	-	-	-	-	-
Sep	-	-	-	-	-
Oct	-	-	-	-	-
Nov	-	-	-	-	-
Dec	-	-	-	-	-
2014 Jan	-	-	-	-	-
Feb	-	-	-	-	-
Mar	-	-	-	-	-
Apr	-	-	-	-	-
May	-	-	-	-	-
Jun	-	-	-	-	-
Jul	-	-	-	-	-
Aug	-	-	-	-	-
Sep	-	-	-	-	-
Oct	-	-	-	-	-
Nov	-	-	-	-	-
Dec	-	-	-	-	-
2015 Jan	-	-	-	-	-
Feb	-	-	-	-	-
Mar	-	-	-	-	-
Apr	-	-	0.1	-	-
May	-0.1	-	0.3	-0.1	0.1
<b>Percentage change, latest year on previous year</b>					
	S222	S243	KI77	KI7G	KI7O
2010	-	-	-	-	-
2011	-	-	-	-	-
2012	-	-	-	-	-
2013	-	-	-	-	-
2014	-	-	-	-	-
<b>Percentage change, latest month on same month a year ago</b>					
	S26Q	S28R	KI7A	KI7I	KI7Q
2013 May	-	-	-	-	-
Jun	-	-	-	-	-
Jul	-	-	-	-	-
Aug	-	-	-	-	-
Sep	-	-	-	-	-
Oct	-	-	-	-	-
Nov	-	-	-	-	-
Dec	-	-	-	-	-
2014 Jan	-	-	-	-	-
Feb	-	-	-	-	-
Mar	-	-	-	-	-
Apr	-	-	-	-	-
May	-	-	-	-	-
Jun	-	-	-	-	-
Jul	-	-	-	-	-
Aug	-	-	-	-	-
Sep	-	-	-	-	-
Oct	-	-	-	-	-
Nov	-	-	-	-	-
Dec	-	-	-	-	-
2015 Jan	-	-	-	-	-
Feb	-	-	-	-	-
Mar	-	-	-	-	-
Apr	-	0.1	-	-0.1	-
May	-0.1	-	0.3	-0.1	-

The earliest period open for revision is April 2015.

Sources: For further information on these data please telephone 01633 455803; fax 01633 455300 or e-mail ios.enquiries@ons.gov.uk

continued

Industry sections (SIC2007)					
	Total service industries	Distribution hotels and restaurants	Transport, storage and communication	Business services and finance	Government and other services
Section	G-T	G and I	H and J	K-N	O-T
<b>2011 weights</b>	<b>1000</b>	<b>178</b>	<b>133</b>	<b>391</b>	<b>298</b>

**Percentage change, latest month on previous month**

	S222	S243	KI77	KI7G	KI7O
2013 May	-	-	-	-	-
Jun	-	-	-	-	-
Jul	-	-	-	-	-
Aug	-	-	-	-	-
Sep	-	-	-	-	-
Oct	-	-	-	-	-
Nov	-	-	-	-	-
Dec	-	-	-	-	-
2014 Jan	-	-	-	-	-
Feb	-	-	-	-	-
Mar	-	-	-	-	-
Apr	-	-	-	-	-
May	-	-	-	-	-
Jun	-	-	-	-	-
Jul	-	-	-	-	-
Aug	-	-	-	-	-
Sep	-	-	-	-	-
Oct	-	-	-	-	-
Nov	-	-	-	-	-
Dec	-	-	-	-	-
2015 Jan	-	-	-	-	-
Feb	-	-	-	-	-
Mar	-	-	-	-	-
Apr	-	-	0.1	-	0.1
May	-0.1	-	0.2	-0.1	-

**Percentage change, latest 3 months on same 3 months a year ago**

	S2G6	S2I7	KI7C	KI7J	KI7R
2013 May	-	-	-	-	-
Jun	-	-	-	-	-
Jul	-	-	-	-	-
Aug	-	-	-	-	-
Sep	-	-	-	-	-
Oct	-	-	-	-	-
Nov	-	-	-	-	-
Dec	-	-	-	-	-
2014 Jan	-	-	-	-	-
Feb	-	-	-	-	-
Mar	-	-	-	-	-
Apr	-	-	-	-	-
May	-	-	-	-	-
Jun	-	-	-	-	-
Jul	-	-	-	-	-
Aug	-	-	-	-	-
Sep	-	-	-	-	-
Oct	-	-	-	-	-
Nov	-	-	-	-	-
Dec	-	-	-	-	-
2015 Jan	-	-	-	-	-
Feb	-	-	-	-	-
Mar	-	-	-	-	-
Apr	-	-	-	-0.1	-
May	-	0.1	0.1	-	-

The earliest period open for revision is April 2015.

Sources: For further information on these data please telephone 01633 455803; fax 01633 455300 or e-mail ios.enquiries@ons.gov.uk

# RIOS1

IOS: Index of Services

Revisions since previously published estimates

seasonally adjusted 2011 = 100

continued

Industry sections (SIC2007)					
	Total service industries	Distribution hotels and restaurants	Transport, storage and communication	Business services and finance	Govern- ment and other services
Section	G-T	G and I	H and J	K-N	O-T
<b>2011 weights</b>	<b>1000</b>	<b>178</b>	<b>133</b>	<b>391</b>	<b>298</b>
<b>Percentage change, latest 3 months on previous 3 months</b>					
	S2BG	S2DH	KI7D	KI7K	KI7S
2013 May	-	-	-	-	-
Jun	-	-	-	-	-
Jul	-	-	-	-	-
Aug	-	-	-	-	-
Sep	-	-	-	-	-
Oct	-	-	-	-	-
Nov	-	-	-	-	-
Dec	-	-	-	-	-
2014 Jan	-	-	-	-	-
Feb	-	-	-	-	-
Mar	-	-	-	-	-
Apr	-	-	-	-	-
May	-	-	-	-	-
Jun	-	-	-	-	-
Jul	-	-	-	-	-
Aug	-	-	-	-	-
Sep	-	-	-	-	-
Oct	-	-	-	-	-
Nov	-	-	-	-	-
Dec	-	-	-	-	-
2015 Jan	-	-	-	-	-
Feb	-	-	-	-	-
Mar	-	-	-	-	-
Apr	-	-	-	-	-
May	-	-	0.1	-0.1	-

The earliest period open for revision is April 2015.

Sources: For further information on these data please telephone  
01633 455803; fax 01633 455300 or e-mail ios.enquiries@ons.gov.uk

Industry components (SIC2007)					
Component	Wholesale and retail repair of motor vehicles and motorcycles	Wholesale trade, except motor vehicles and motorcycles	Retail trades except of motor vehicles and motorcycles	Land transport	Air transport
	45	46	47	49	51
2011 weights	23	47	72	22	6
	S2KW	S2KX	S2KY	KFV6	S2L5
2010	101.6	94.6	99.8	98.7	93.5
2011	100.0	100.0	100.0	100.0	100.0
2012	106.4	98.5	100.7	99.2	106.2
2013	118.7	106.0	102.2	100.9	110.1
2014	129.3	111.2	106.4	107.6	115.8
2013 Jun	116.7	106.9	102.6	100.6	113.2
Jul	116.0	107.2	103.4	101.1	110.5
Aug	119.5	107.4	102.6	100.4	110.7
Sep	123.2	107.2	103.5	101.9	111.0
Oct	122.4	106.8	102.4	102.0	111.8
Nov	124.5	108.2	102.8	101.4	112.3
Dec	127.0	104.6	105.2	98.6	112.9
2014 Jan	127.1	107.9	103.4	101.8	114.1
Feb	126.4	109.3	104.5	103.1	114.7
Mar	127.9	111.6	105.1	104.5	116.3
Apr	127.4	109.9	105.8	104.6	115.5
May	127.2	110.7	106.0	107.7	117.2
Jun	129.8	110.7	106.2	108.3	116.7
Jul	129.1	111.4	106.3	109.0	115.3
Aug	129.8	112.1	106.7	109.5	117.0
Sep	131.1	113.4	106.1	109.9	116.8
Oct	130.6	112.1	107.7	110.5	117.1
Nov	131.8	112.0	109.4	110.8	114.7
Dec	133.8	113.1	109.3	111.1	114.3
2015 Jan	133.8	113.8	109.5	111.5	114.2
Feb	134.9	112.7	110.2	110.8	111.9
Mar	136.0	112.9	109.5	111.0	110.8
Apr	137.3	113.6	110.3	111.1	113.3
May	137.9	112.4	110.6	111.4	112.8
Jun	142.2	113.3	110.5	111.8	112.1
<b>Percentage change, latest year on previous year</b>					
	S224	S225	S226	KFV5	S22B
2010	5.3	2.4	-0.6	-3.6	-1.5
2011	-1.6	5.7	0.2	1.3	7.0
2012	6.4	-1.5	0.7	-0.8	6.2
2013	11.5	7.6	1.5	1.6	3.7
2014	9.0	4.9	4.1	6.6	5.2
<b>Percentage change, latest month on same month a year ago</b>					
	S26S	S26T	S26U	KF16	S26Z
2013 Jun	12.1	14.8	1.9	4.9	5.7
Jul	5.9	10.7	2.4	2.6	4.0
Aug	11.1	7.4	1.7	-1.1	4.7
Sep	8.5	7.9	2.3	2.5	4.2
Oct	12.9	6.5	1.7	1.3	5.9
Nov	13.0	7.8	2.0	2.8	5.9
Dec	19.9	3.3	5.3	-1.4	6.7
2014 Jan	15.3	5.3	3.7	2.3	9.5
Feb	8.4	5.5	2.8	2.0	3.4
Mar	9.9	7.7	4.6	1.1	9.4
Apr	10.1	2.4	6.0	4.4	8.0
May	10.0	4.1	3.7	7.5	5.8
Jun	11.2	3.6	3.5	7.6	3.1
Jul	11.3	4.0	2.8	7.8	4.3
Aug	8.6	4.4	4.0	9.1	5.7
Sep	6.4	5.8	2.5	7.9	5.2
Oct	6.7	4.9	5.1	8.3	4.7
Nov	5.9	3.5	6.4	9.3	2.1
Dec	5.3	8.1	3.9	12.7	1.3
2015 Jan	5.3	5.4	5.9	9.5	0.1
Feb	6.7	3.1	5.5	7.5	-2.5
Mar	6.3	1.1	4.2	6.1	-4.7
Apr	7.8	3.3	4.3	6.2	-1.8
May	8.5	1.5	4.4	3.5	-3.7
Jun	9.6	2.4	4.0	3.3	-3.9

1 Indices reflect values measured at basic prices, which exclude "taxes less subsidies on products".

2 Estimates cannot be regarded as accurate to the last digit shown.

3 Any apparent inconsistencies between the index numbers and the percentage changes shown in these tables are due to rounding.

4 A complete run of data is available on the ONS website as a [Time series dataset](#)

# IOSCOMP

IOS: Index of Services

Chained volume indices of gross value added<sup>1,2,3</sup>

seasonally adjusted 2011 = 100

continued

Component	Industry components (SIC2007)				
	Wholesale and retail repair of motor vehicles and motorcycles	Wholesale trade, except motor vehicles and motorcycles	Retail trades except of motor vehicles and motorcycles	Land transport	Air transport
	45	46	47	49	51
<b>2011 weights</b>	<b>23</b>	<b>47</b>	<b>72</b>	<b>22</b>	<b>6</b>

## Percentage change, latest month on previous month

	S224	S225	S226	KFV5	S22B
2013 Jun	1.0	0.5	0.4	0.5	2.2
Jul	-0.6	0.3	0.8	0.5	-2.4
Aug	3.0	0.2	-0.8	-0.7	0.2
Sep	3.1	-0.1	0.9	1.5	0.3
Oct	-0.7	-0.4	-1.1	0.1	0.7
Nov	1.7	1.4	0.3	-0.6	0.4
Dec	2.0	-3.4	2.4	-2.7	0.6
2014 Jan	-	3.2	-1.7	3.2	1.0
Feb	-0.5	1.3	1.1	1.2	0.6
Mar	1.2	2.1	0.7	1.4	1.4
Apr	-0.4	-1.5	0.6	-	-0.7
May	-0.2	0.7	0.2	3.0	1.5
Jun	2.1	-0.1	0.2	0.6	-0.4
Jul	-0.5	0.7	0.1	0.7	-1.2
Aug	0.5	0.6	0.4	0.4	1.5
Sep	1.0	1.1	-0.6	0.4	-0.2
Oct	-0.4	-1.2	1.5	0.5	0.2
Nov	0.9	-	1.6	0.3	-2.0
Dec	1.5	0.9	-0.1	0.3	-0.3
2015 Jan	-	0.6	0.2	0.3	-0.1
Feb	0.8	-1.0	0.6	-0.6	-2.0
Mar	0.8	0.2	-0.6	0.1	-0.9
Apr	1.0	0.6	0.7	0.1	2.2
May	0.4	-1.0	0.3	0.3	-0.4
Jun	3.1	0.8	-0.1	0.4	-0.7

## Percentage change, latest 3 months on same 3 months a year ago

	S2G8	S2G9	S2GA	KF18	S2GF
2013 Jun	11.0	10.2	1.2	2.3	2.4
Jul	9.2	10.6	1.9	2.6	4.3
Aug	9.7	10.9	2.0	2.1	4.8
Sep	8.5	8.6	2.1	1.3	4.3
Oct	10.8	7.2	1.9	0.9	4.9
Nov	11.4	7.4	2.0	2.2	5.3
Dec	15.2	5.9	3.0	0.9	6.2
2014 Jan	16.0	5.5	3.6	1.2	7.4
Feb	14.3	4.7	3.9	1.0	6.5
Mar	11.1	6.2	3.7	1.8	7.4
Apr	9.5	5.2	4.4	2.5	6.9
May	10.0	4.7	4.7	4.3	7.7
Jun	10.4	3.4	4.4	6.5	5.6
Jul	10.8	3.9	3.3	7.7	4.4
Aug	10.4	4.0	3.4	8.2	4.3
Sep	8.7	4.7	3.1	8.3	5.1
Oct	7.2	5.0	3.9	8.4	5.2
Nov	6.3	4.7	4.7	8.5	4.0
Dec	6.0	5.5	5.1	10.1	2.7
2015 Jan	5.5	5.6	5.4	10.5	1.2
Feb	5.8	5.5	5.1	9.9	-0.4
Mar	6.1	3.2	5.2	7.7	-2.4
Apr	6.9	2.5	4.6	6.6	-3.0
May	7.5	2.0	4.3	5.3	-3.4
Jun	8.6	2.4	4.2	4.3	-3.2

1 Indices reflect values measured at basic prices, which exclude "taxes less subsidies on products".

2 Estimates cannot be regarded as accurate to the last digit shown.

3 Any apparent inconsistencies between the index numbers and the percentage changes shown in these tables are due to rounding.

4 A complete run of data is available on the ONS website as a [Time series dataset](#)

Sources: For further information on these data please telephone 01633 455803; fax 01633 455300 or e-mail [ios.enquiries@ons.gov.uk](mailto:ios.enquiries@ons.gov.uk)

# IOSCOMP

IOS: Index of Services

Chained volume indices of gross value added<sup>1,2,3</sup>

seasonally adjusted 2011 = 100

continued

Component	Industry components (SIC2007)				
	Wholesale and retail. repair of motor vehicles and motorcycles	Wholesale trade, except motor vehicles and motorcycles	Retail trades except of motor vehicles and motorcycles	Land transport	Air transport
	45	46	47	49	51
<b>2011 weights</b>	<b>23</b>	<b>47</b>	<b>72</b>	<b>22</b>	<b>6</b>

## Percentage change, latest 3 months on previous 3 months

	S2BI	S2BJ	S2BK	KFJ2	S2BP
2013 Jun	1.4	3.5	0.9	-1.0	3.0
Jul	-0.1	1.8	2.1	-0.9	3.2
Aug	1.3	1.3	2.0	-0.5	3.2
Sep	3.1	0.4	1.6	0.8	0.4
Oct	4.8	0.3	0.1	0.8	-0.3
Nov	5.1	0.3	-	1.0	0.2
Dec	4.2	-0.7	0.3	-0.4	1.4
2014 Jan	3.7	-0.2	0.9	-0.8	1.7
Feb	2.8	-0.1	1.4	-0.6	2.0
Mar	2.0	2.9	0.8	2.5	2.4
Apr	0.8	3.1	1.3	3.4	2.1
May	0.5	3.2	1.2	4.4	2.1
Jun	0.8	0.7	1.6	3.6	1.2
Jul	1.1	0.6	1.0	4.1	0.8
Aug	1.6	0.6	0.7	3.2	-
Sep	1.5	1.7	0.4	2.5	-0.1
Oct	1.4	1.4	0.6	1.5	0.5
Nov	1.2	1.0	1.2	1.3	-0.1
Dec	1.6	0.1	2.3	1.2	-0.9
2015 Jan	2.0	0.4	2.4	1.1	-2.2
Feb	2.3	0.6	1.8	0.7	-2.3
Mar	2.1	0.6	0.9	0.3	-2.6
Apr	2.2	0.1	0.5	-0.2	-2.1
May	2.2	-0.2	0.5	-	-1.0
Jun	3.2	-	0.7	0.3	0.4

1 Indices reflect values measured at basic prices, which exclude "taxes less subsidies on products".

2 Estimates cannot be regarded as accurate to the last digit shown.

3 Any apparent inconsistencies between the index numbers and the percentage changes shown in these tables are due to rounding.

4 A complete run of data is available on the ONS website as a

[Time series dataset](#)

Sources: For further information on these data please telephone 01633 455803; fax 01633 455300 or e-mail [ios.enquiries@ons.gov.uk](mailto:ios.enquiries@ons.gov.uk)



# IOSCOMP

IOS: Index of Services  
Chained volume indices of gross value added <sup>1,2,3</sup>

seasonally adjusted 2011 = 100

continued

Component	Industry components (SIC2007)				
	Warehousing and support activities for transportation	Postal and courier activities	Accommodation	Food and beverage service activities	Publishing, audiovisual and broadcasting activities
	52	53	55	56	58-60
<b>2011 weights</b>	<b>14</b>	<b>9</b>	<b>10</b>	<b>26</b>	<b>21</b>
	S2L6	S2L7	S2L9	S2LA	KFW8
2010	96.1	108.8	92.8	99.1	96.8
2011	100.0	100.0	100.0	100.0	100.0
2012	103.2	92.1	100.0	105.6	103.4
2013	104.9	89.9	103.6	100.4	108.2
2014	112.5	89.7	105.6	103.5	104.1
2013 Jun	104.7	89.9	107.9	99.0	107.0
Jul	106.5	91.4	106.5	100.3	106.9
Aug	105.0	89.2	107.7	100.9	107.8
Sep	104.3	85.7	100.5	99.3	109.9
Oct	104.0	88.9	102.7	99.0	107.8
Nov	104.5	92.1	103.5	101.1	109.4
Dec	105.9	90.8	100.6	101.7	111.1
2014 Jan	110.2	89.1	104.3	101.7	107.0
Feb	107.8	90.0	103.4	102.6	103.5
Mar	108.5	91.7	100.4	103.8	102.8
Apr	109.8	91.4	104.3	102.7	104.0
May	110.6	89.7	106.6	103.4	103.1
Jun	112.3	90.6	103.6	103.0	103.4
Jul	113.8	90.5	103.4	103.6	103.1
Aug	113.9	89.5	106.2	103.4	103.3
Sep	114.6	89.4	107.8	104.9	103.4
Oct	115.6	88.3	108.8	103.9	103.9
Nov	114.1	87.5	109.0	104.0	104.7
Dec	118.4	88.5	109.8	104.9	107.1
2015 Jan	113.3	89.6	110.7	103.8	107.5
Feb	112.5	89.9	112.7	105.1	108.4
Mar	113.4	90.4	116.2	105.9	107.5
Apr	112.2	91.2	116.0	106.6	107.0
May	111.4	89.2	116.2	105.8	111.1
Jun	112.2	90.1	117.8	104.7	115.1
<b>Percentage change, latest year on previous year</b>	S22C	S22D	S22F	S22G	KFW7
2010	-5.6	1.6	5.9	1.4	2.5
2011	4.1	-8.1	7.8	0.9	3.3
2012	3.2	-7.9	-	5.6	3.4
2013	1.6	-2.4	3.6	-4.9	4.6
2014	7.2	-0.2	2.0	3.1	-3.7
<b>Percentage change, latest month on same month a year ago</b>	S272	S273	S275	S276	KFM4
2013 Jun	3.4	-3.0	8.6	-6.4	5.0
Jul	3.0	1.0	6.0	-5.6	7.1
Aug	0.3	-0.3	2.6	-6.9	4.6
Sep	0.6	-3.9	-1.2	-7.4	7.9
Oct	-0.6	-3.5	3.0	-6.6	2.8
Nov	-	1.7	5.4	-4.0	3.4
Dec	2.5	3.5	0.4	-0.3	5.1
2014 Jan	4.8	-2.5	6.1	2.1	0.1
Feb	3.0	-2.1	1.9	-0.1	-4.9
Mar	4.5	1.6	-3.5	3.5	-6.4
Apr	5.0	2.8	0.6	3.0	-2.1
May	4.9	1.7	0.6	2.0	-2.9
Jun	7.3	0.8	-4.0	4.0	-3.4
Jul	6.9	-1.0	-2.9	3.3	-3.6
Aug	8.4	0.3	-1.4	2.5	-4.2
Sep	9.8	4.3	7.3	5.6	-5.9
Oct	11.1	-0.6	6.0	4.9	-3.6
Nov	9.2	-4.9	5.3	2.8	-4.3
Dec	11.9	-2.5	9.1	3.2	-3.7
2015 Jan	2.8	0.6	6.1	2.1	0.5
Feb	4.3	-0.1	9.0	2.4	4.7
Mar	4.5	-1.5	15.8	1.9	4.5
Apr	2.1	-0.2	11.2	3.8	2.8
May	0.7	-0.7	9.0	2.4	7.8
Jun	-0.1	-0.6	13.6	1.6	11.3

1 Indices reflect values measured at basic prices, which exclude "taxes less subsidies on products".

2 Estimates cannot be regarded as accurate to the last digit shown.

3 Any apparent inconsistencies between the index numbers and the percentage changes shown in these tables are due to rounding.

4 A complete run of data is available on the ONS website as a [Time series dataset](#)

Sources: For further information on these data please telephone 01633 455803; fax 01633 455300 or e-mail [ios.enquiries@ons.gov.uk](mailto:ios.enquiries@ons.gov.uk)

# IOSCOMP

IOS: Index of Services

Chained volume indices of gross value added<sup>1,2,3</sup>

seasonally adjusted 2011 = 100

continued

Component	Industry components (SIC2007)				
	Warehousing and support activities for transportation	Postal and courier activities	Accommodation	Food and beverage service activities	Publishing, audiovisual and broadcasting activities
	52	53	55	56	58-60
<b>2011 weights</b>	<b>14</b>	<b>9</b>	<b>10</b>	<b>26</b>	<b>21</b>

## Percentage change, latest month on previous month

	S22C	S22D	S22F	S22G	KFW7
2013 Jun	-0.7	1.8	1.9	-2.2	0.9
Jul	1.7	1.7	-1.3	1.3	-0.1
Aug	-1.4	-2.4	1.1	0.6	0.8
Sep	-0.6	-3.9	-6.7	-1.5	1.9
Oct	-0.3	3.7	2.1	-0.3	-1.9
Nov	0.5	3.6	0.9	2.1	1.5
Dec	1.3	-1.3	-2.8	0.5	1.6
2014 Jan	4.1	-1.9	3.6	-	-3.8
Feb	-2.2	1.0	-0.9	0.9	-3.2
Mar	0.6	2.0	-2.9	1.2	-0.7
Apr	1.2	-0.4	3.9	-1.1	1.2
May	0.7	-1.8	2.2	0.6	-0.9
Jun	1.6	1.0	-2.8	-0.3	0.4
Jul	1.3	-0.1	-0.2	0.6	-0.3
Aug	0.1	-1.1	2.7	-0.3	0.2
Sep	0.6	-0.2	1.5	1.5	0.1
Oct	0.9	-1.2	0.9	-0.9	0.5
Nov	-1.3	-0.9	0.2	-	0.7
Dec	3.8	1.1	0.7	0.9	2.3
2015 Jan	-4.3	1.2	0.8	-1.1	0.4
Feb	-0.8	0.3	1.8	1.3	0.9
Mar	0.9	0.6	3.1	0.7	-0.9
Apr	-1.1	0.9	-0.1	0.7	-0.5
May	-0.7	-2.2	0.1	-0.7	3.8
Jun	0.7	1.1	1.4	-1.0	3.6

## Percentage change, latest 3 months on same 3 months a year ago

	S2GG	S2GH	S2GJ	S2GK	KFM6
2013 Jun	2.0	-4.9	6.8	-5.8	2.5
Jul	2.3	-3.3	7.8	-5.7	4.0
Aug	2.3	-0.8	5.7	-6.3	5.6
Sep	1.3	-1.0	2.5	-6.7	6.5
Oct	0.1	-2.6	1.5	-7.0	5.1
Nov	-	-1.9	2.4	-6.0	4.7
Dec	0.6	0.5	2.9	-3.7	3.8
2014 Jan	2.4	0.9	3.9	-0.8	2.9
Feb	3.4	-0.4	2.8	0.5	-
Mar	4.1	-1.0	1.4	1.8	-3.8
Apr	4.2	0.8	-0.3	2.1	-4.5
May	4.8	2.0	-0.7	2.8	-3.8
Jun	5.7	1.8	-0.9	3.0	-2.8
Jul	6.4	0.5	-2.1	3.1	-3.3
Aug	7.5	-	-2.8	3.3	-3.7
Sep	8.4	1.1	0.8	3.8	-4.6
Oct	9.8	1.3	3.8	4.3	-4.6
Nov	10.1	-0.5	6.2	4.5	-4.6
Dec	10.8	-2.7	6.8	3.7	-3.9
2015 Jan	7.9	-2.3	6.8	2.7	-2.5
Feb	6.3	-0.7	8.0	2.6	0.4
Mar	3.9	-0.3	10.2	2.1	3.2
Apr	3.7	-0.6	11.9	2.7	4.0
May	2.5	-0.8	11.9	2.7	5.0
Jun	0.9	-0.5	11.2	2.6	7.3

1 Indices reflect values measured at basic prices, which exclude "taxes less subsidies on products".

2 Estimates cannot be regarded as accurate to the last digit shown.

3 Any apparent inconsistencies between the index numbers and the percentage changes shown in these tables are due to rounding.

4 A complete run of data is available on the ONS website as a

[Time series dataset](#)

Sources: For further information on these data please telephone 01633 455803; fax 01633 455300 or e-mail ios.enquiries@ons.gov.uk

# IOSCOMP

IOS: Index of Services

Chained volume indices of gross value added<sup>1,2,3</sup>

seasonally adjusted 2011 = 100

continued

Component	Industry components (SIC2007)				
	Warehousing and support activities for transportation	Postal and courier activities	Accommodation	Food and beverage service activities	Publishing, audiovisual and broadcasting activities
	52	53	55	56	58-60
<b>2011 weights</b>	<b>14</b>	<b>9</b>	<b>10</b>	<b>26</b>	<b>21</b>

## Percentage change, latest 3 months on previous 3 months

	S2BQ	S2BR	S2BT	S2BU	KFM8
2013 Jun	0.3	-2.4	4.6	-0.9	-1.9
Jul	1.1	-0.5	3.7	-0.7	-1.5
Aug	0.7	1.2	2.7	-0.4	-0.1
Sep	0.3	-0.3	-0.9	0.2	1.6
Oct	-1.0	-2.1	-3.0	-0.5	1.7
Nov	-1.1	-1.4	-4.8	-0.2	1.6
Dec	-0.5	2.0	-2.5	0.4	1.1
2014 Jan	2.3	3.1	-0.8	1.7	0.6
Feb	3.5	1.2	0.5	2.1	-1.7
Mar	3.9	-0.3	0.4	2.1	-4.6
Apr	1.7	0.4	-0.1	1.5	-5.2
May	1.6	1.1	1.0	1.3	-3.6
Jun	1.9	0.3	2.1	0.3	-0.9
Jul	3.2	-0.8	1.8	0.3	-0.2
Aug	3.4	-0.8	0.6	-	-
Sep	2.8	-0.9	0.9	0.9	-0.2
Oct	2.2	-1.3	2.9	0.7	0.3
Nov	1.3	-2.0	4.0	0.9	0.7
Dec	1.7	-1.9	3.2	0.3	1.9
2015 Jan	0.5	-0.6	2.0	0.1	2.8
Feb	-	1.1	2.3	0.3	3.5
Mar	-2.6	2.1	3.6	0.6	2.4
Apr	-2.3	2.2	4.7	1.5	1.1
May	-2.1	1.0	4.6	1.4	0.8
Jun	-1.0	0.2	3.1	0.8	3.1

- 1 Indices reflect values measured at basic prices, which exclude "taxes less subsidies on products".
- 2 Estimates cannot be regarded as accurate to the last digit shown.
- 3 Any apparent inconsistencies between the index numbers and the percentage changes shown in these tables are due to rounding.
- 4 A complete run of data is available on the ONS website as a [Time series dataset](#)

Sources: For further information on these data please telephone 01633 455803; fax 01633 455300 or e-mail [ios.enquiries@ons.gov.uk](mailto:ios.enquiries@ons.gov.uk)

continued

Component	Industry components (SIC2007)				
	Telecom -munications	Computer programming, consultancy and related activities	Information service activities	Financial service activities except insurance and pension funding	Real estate activities
	61	62	63	64	68
<b>2011 weights</b>	<b>22</b>	<b>31</b>	<b>5</b>	<b>62</b>	<b>137</b>
	S2LE	S2LF	S2LG	S2LI	KFW4
2010	95.7	98.9	101.1	104.6	97.5
2011	100.0	100.0	100.0	100.0	100.0
2012	100.4	105.0	97.0	97.6	103.1
2013	96.2	108.4	102.9	93.3	105.1
2014	92.5	116.3	106.5	90.4	107.9
2013 Jun	96.7	106.6	97.5	93.2	104.8
Jul	98.0	106.1	101.7	92.4	104.9
Aug	94.5	109.1	104.1	92.1	105.1
Sep	93.8	109.0	106.2	92.0	105.4
Oct	92.4	107.5	106.6	92.6	105.9
Nov	90.7	110.6	104.7	92.6	106.2
Dec	91.0	112.5	107.7	92.0	106.9
2014 Jan	91.0	113.8	102.0	91.7	106.9
Feb	91.9	111.9	104.9	90.9	107.2
Mar	93.2	110.8	104.7	90.0	107.1
Apr	92.5	115.0	104.9	90.1	107.3
May	90.6	117.1	104.7	89.8	107.8
Jun	92.2	116.1	109.3	90.2	107.5
Jul	92.4	117.1	107.6	90.2	108.0
Aug	92.6	117.7	105.4	89.8	107.9
Sep	93.8	118.3	106.4	89.3	108.5
Oct	93.6	119.6	109.5	90.1	108.5
Nov	92.9	118.6	109.5	90.8	108.6
Dec	92.9	119.2	108.7	91.8	109.1
2015 Jan	93.1	120.3	114.6	91.7	108.9
Feb	93.4	122.3	116.6	91.3	109.2
Mar	95.0	117.8	113.2	90.9	109.4
Apr	94.5	122.0	114.4	91.1	109.5
May	94.4	122.0	119.1	91.5	109.2
Jun	94.7	123.1	117.5	91.3	109.6
<b>Percentage change, latest year on previous year</b>	S22K	S22L	S22M	S22O	KFW3
2010	5.7	10.3	10.0	-6.8	2.3
2011	4.5	1.1	-1.1	-4.4	2.5
2012	0.4	5.0	-3.0	-2.4	3.1
2013	-4.2	3.3	6.1	-4.4	2.0
2014	-3.9	7.2	3.4	-3.2	2.6
<b>Percentage change, latest month on same month a year ago</b>	S27A	S27B	S27C	S27E	KFK8
2013 Jun	-5.2	6.3	10.5	-5.5	1.4
Jul	-2.8	1.7	14.2	-6.0	1.1
Aug	-6.3	2.7	17.2	-5.4	1.4
Sep	-6.8	2.9	18.3	-5.6	1.9
Oct	-7.0	0.5	14.9	-3.7	2.0
Nov	-8.7	6.1	21.0	-4.2	2.4
Dec	-6.4	7.9	5.9	-4.0	3.1
2014 Jan	-7.8	5.0	-1.9	-4.3	2.8
Feb	-8.2	3.1	3.5	-4.5	2.9
Mar	-6.1	4.4	9.2	-4.8	2.5
Apr	-6.6	4.9	1.2	-3.9	2.4
May	-9.9	9.5	2.9	-4.5	2.9
Jun	-4.7	8.9	12.1	-3.2	2.6
Jul	-5.7	10.4	5.8	-2.3	3.0
Aug	-2.1	7.8	1.2	-2.5	2.7
Sep	-	8.5	0.1	-2.9	2.9
Oct	1.2	11.3	2.7	-2.8	2.4
Nov	2.5	7.2	4.7	-1.9	2.2
Dec	2.1	5.9	0.9	-0.2	2.0
2015 Jan	2.3	5.7	12.3	-	1.9
Feb	1.6	9.3	11.1	0.3	1.9
Mar	1.9	6.3	8.1	1.0	2.1
Apr	2.1	6.1	9.1	1.2	2.1
May	4.3	4.2	13.7	1.9	1.4
Jun	2.7	6.0	7.5	1.3	1.9

1 Indices reflect values measured at basic prices, which exclude "taxes less subsidies on products".

2 Estimates cannot be regarded as accurate to the last digit shown.

3 Any apparent inconsistencies between the index numbers and the percentage changes shown in these tables are due to rounding.

4 A complete run of data is available on the ONS website as a [Time series dataset](#)

# IOSCOMP

IOS: Index of Services

Chained volume indices of gross value added<sup>1,2,3</sup>

seasonally adjusted 2011 = 100

continued

Component	Industry components (SIC2007)				
	Telecom -munications	Computer programming, consultancy and related activities	Information service activities	Financial service activities except insurance and pension funding	Real estate activities
2011 weights	61	62	63	64	68
	22	31	5	62	137

## Percentage change, latest month on previous month

	S22K	S22L	S22M	S22O	KFW3
2013 Jun	-3.8	-0.3	-4.3	-0.9	-
Jul	1.3	-0.5	4.4	-0.8	0.1
Aug	-3.5	2.8	2.3	-0.4	0.2
Sep	-0.8	-0.1	2.1	-0.1	0.3
Oct	-1.4	-1.4	0.4	0.7	0.4
Nov	-1.9	2.9	-1.8	-0.1	0.4
Dec	0.4	1.7	2.9	-0.6	0.7
2014 Jan	-	1.1	-5.3	-0.3	-
Feb	1.0	-1.7	2.9	-0.8	0.3
Mar	1.4	-1.0	-0.2	-1.1	-0.1
Apr	-0.8	3.8	0.2	0.1	0.1
May	-2.1	1.8	-0.1	-0.3	0.5
Jun	1.8	-0.9	4.4	0.5	-0.3
Jul	0.2	0.9	-1.5	-	0.5
Aug	0.3	0.5	-2.1	-0.5	-0.1
Sep	1.3	0.5	0.9	-0.5	0.6
Oct	-0.2	1.1	3.0	0.8	-
Nov	-0.7	-0.8	-	0.8	0.1
Dec	-	0.5	-0.8	1.1	0.4
2015 Jan	0.2	0.9	5.4	-0.1	-0.1
Feb	0.3	1.7	1.8	-0.4	0.3
Mar	1.7	-3.7	-2.9	-0.4	0.2
Apr	-0.6	3.5	1.1	0.3	0.1
May	-	-	4.1	0.4	-0.3
Jun	0.2	0.9	-1.4	-0.2	0.3

## Percentage change, latest 3 months on same 3 months a year ago

	S2GO	S2GP	S2GQ	S2GS	KFL2
2013 Jun	-2.7	4.8	4.6	-5.1	1.7
Jul	-2.9	3.2	9.3	-5.4	1.4
Aug	-4.8	3.5	14.0	-5.6	1.3
Sep	-5.3	2.4	16.6	-5.7	1.5
Oct	-6.7	2.0	16.8	-4.9	1.8
Nov	-7.5	3.2	18.0	-4.5	2.1
Dec	-7.4	4.8	13.5	-4.0	2.5
2014 Jan	-7.6	6.3	7.6	-4.2	2.8
Feb	-7.5	5.3	2.5	-4.3	2.9
Mar	-7.4	4.2	3.5	-4.5	2.7
Apr	-7.0	4.1	4.5	-4.4	2.6
May	-7.5	6.2	4.3	-4.4	2.6
Jun	-7.1	7.7	5.3	-3.8	2.6
Jul	-6.8	9.6	6.9	-3.3	2.8
Aug	-4.2	9.0	6.3	-2.7	2.8
Sep	-2.6	8.9	2.3	-2.6	2.9
Oct	-0.3	9.2	1.4	-2.7	2.7
Nov	1.2	9.0	2.5	-2.5	2.5
Dec	1.9	8.1	2.7	-1.6	2.2
2015 Jan	2.3	6.3	5.9	-0.7	2.0
Feb	2.0	6.9	8.0	-	1.9
Mar	1.9	7.1	10.5	0.4	2.0
Apr	1.9	7.2	9.4	0.9	2.1
May	2.8	5.5	10.3	1.4	1.9
Jun	3.0	5.4	10.1	1.5	1.8

1 Indices reflect values measured at basic prices, which exclude "taxes less subsidies on products".

2 Estimates cannot be regarded as accurate to the last digit shown.

3 Any apparent inconsistencies between the index numbers and the percentage changes shown in these tables are due to rounding.

4 A complete run of data is available on the ONS website as a

[Time series dataset](#)

Sources: For further information on these data please telephone 01633 455803; fax 01633 455300 or e-mail ios.enquiries@ons.gov.uk

# IOSCOMP

IOS: Index of Services

Chained volume indices of gross value added<sup>1,2,3</sup>

seasonally adjusted 2011 = 100

continued

Component	Industry components (SIC2007)				
	Telecom -munications	Computer programming, consultancy and related activities	Information service activities	Financial service activities except insurance and pension funding	Real estate activities
Component	61	62	63	64	68
<b>2011 weights</b>	<b>22</b>	<b>31</b>	<b>5</b>	<b>62</b>	<b>137</b>

## Percentage change, latest 3 months on previous 3 months

	S2BY	S2BZ	S2C2	S2C4	KFL4
2013 Jun	-0.6	0.1	0.6	-1.6	0.5
Jul	-1.1	-1.4	0.1	-1.3	0.3
Aug	-3.2	-0.3	0.7	-1.6	0.2
Sep	-3.4	0.3	3.0	-1.6	0.3
Oct	-4.9	1.8	5.3	-1.0	0.6
Nov	-4.3	1.6	4.7	-0.2	0.9
Dec	-4.2	2.0	2.2	0.2	1.2
2014 Jan	-2.9	3.5	-0.8	-0.2	1.2
Feb	-1.0	3.4	-0.9	-0.9	1.1
Mar	0.8	1.8	-2.3	-1.6	0.7
Apr	1.8	0.2	-	-1.9	0.5
May	0.8	1.4	-0.1	-1.7	0.3
Jun	-0.4	3.5	2.3	-0.9	0.4
Jul	-0.9	3.7	2.3	-0.3	0.5
Aug	0.3	2.3	2.5	0.1	0.4
Sep	1.3	1.4	0.1	-0.3	0.6
Oct	1.8	1.5	-0.1	-0.4	0.5
Nov	1.1	1.6	1.0	-	0.7
Dec	0.2	1.2	2.6	1.2	0.5
2015 Jan	-0.4	0.7	3.6	1.9	0.5
Feb	-0.3	1.5	4.4	1.7	0.5
Mar	0.8	0.8	5.1	0.4	0.5
Apr	1.4	1.1	3.4	-0.3	0.5
May	1.6	-	2.0	-0.4	0.3
Jun	0.7	1.9	1.9	0.1	0.2

1 Indices reflect values measured at basic prices, which exclude "taxes less subsidies on products".

2 Estimates cannot be regarded as accurate to the last digit shown.

3 Any apparent inconsistencies between the index numbers and the percentage changes shown in these tables are due to rounding.

4 A complete run of data is available on the ONS website as a [Time series dataset](#)

Sources: For further information on these data please telephone 01633 455803; fax 01633 455300 or e-mail [ios.enquiries@ons.gov.uk](mailto:ios.enquiries@ons.gov.uk)

# IOSCOMP

IOS: Index of Services  
Chained volume indices of gross value added<sup>1,2,3</sup>

seasonally adjusted 2011 = 100

continued

Industry components (SIC2007)						
	Other professional service activities	Other professional scientific and technical activities	Administrative and support service activities	Public admin and defence; compulsory social security	Education	
Component	69-71	73-75	77-82	84	85	
2011 weights	67	17	57	70	87	
	KFX6	KFY2	S2LZ	S2M9	S2MB	
2010	95.5	85.8	93.4	104.2	99.2	
2011	100.0	100.0	100.0	100.0	100.0	
2012	103.1	106.2	108.1	98.4	102.9	
2013	111.1	107.7	114.2	96.5	103.3	
2014	118.5	116.3	125.4	94.4	103.5	
2013 Jun	111.4	106.6	113.5	96.5	103.0	
Jul	112.6	106.2	114.4	96.7	103.3	
Aug	113.2	109.8	116.2	96.6	103.4	
Sep	113.4	110.9	117.0	96.2	103.3	
Oct	113.1	111.7	117.9	96.0	103.3	
Nov	113.5	110.6	120.2	95.8	103.3	
Dec	112.3	112.0	120.1	95.7	103.5	
2014 Jan	113.3	109.5	120.6	95.4	103.4	
Feb	114.6	112.9	121.1	95.1	103.5	
Mar	116.4	116.1	122.5	94.9	103.5	
Apr	116.3	118.1	123.5	94.8	103.6	
May	117.9	114.4	125.0	94.5	103.6	
Jun	120.0	116.7	125.9	94.2	103.6	
Jul	119.0	119.5	127.7	94.1	103.7	
Aug	118.4	115.1	126.4	94.2	103.7	
Sep	120.4	117.3	127.6	94.1	103.5	
Oct	122.0	115.4	128.1	93.9	103.3	
Nov	121.4	120.4	126.7	93.9	103.1	
Dec	122.5	120.0	129.1	93.8	103.1	
2015 Jan	121.0	119.2	128.3	93.7	103.3	
Feb	122.3	116.3	128.7	93.5	103.5	
Mar	122.7	117.0	130.9	93.4	103.5	
Apr	124.1	111.3	130.4	93.3	103.5	
May	125.4	115.2	129.7	93.2	103.6	
Jun	126.9	117.3	131.5	93.1	103.6	
<b>Percentage change, latest year on previous year</b>						
	KFX5	KFX9	S237	S23F	S23H	
2010	0.5	7.3	12.1	-0.8	-0.8	
2011	4.7	16.5	7.1	-4.0	0.8	
2012	3.1	6.2	8.1	-1.6	2.9	
2013	7.8	1.4	5.6	-2.0	0.4	
2014	6.7	7.9	9.8	-2.1	0.2	
<b>Percentage change, latest month on same month a year ago</b>						
	KFO6	KFQ2	S27V	S285	S287	
2013 Jun	13.2	4.0	7.7	-2.2	0.4	
Jul	12.9	-4.9	6.0	-2.0	-0.2	
Aug	9.5	1.5	5.4	-1.9	-1.0	
Sep	9.3	6.3	6.6	-2.1	-1.2	
Oct	8.8	2.9	4.5	-2.0	-0.8	
Nov	7.8	1.9	9.1	-2.1	-0.3	
Dec	6.4	4.8	9.4	-2.1	0.2	
2014 Jan	6.2	3.5	10.7	-1.7	0.2	
Feb	5.8	8.2	11.6	-1.8	0.4	
Mar	7.4	11.2	12.1	-1.9	-	
Apr	6.2	11.1	11.0	-1.9	0.1	
May	6.3	9.9	10.9	-2.1	0.6	
Jun	7.7	9.4	10.9	-2.4	0.7	
Jul	5.7	12.4	11.6	-2.7	0.4	
Aug	4.5	4.8	8.8	-2.5	0.3	
Sep	6.2	5.7	9.1	-2.2	0.3	
Oct	7.9	3.4	8.6	-2.2	-	
Nov	7.0	8.8	5.4	-2.0	-0.3	
Dec	9.1	7.1	7.5	-2.0	-0.3	
2015 Jan	6.8	8.9	6.4	-1.9	-0.1	
Feb	6.7	3.0	6.3	-1.7	-	
Mar	5.4	0.8	6.9	-1.5	-	
Apr	6.7	-5.8	5.6	-1.6	-	
May	6.4	0.7	3.7	-1.4	-	
Jun	5.7	0.6	4.4	-1.2	-0.1	

1 Indices reflect values measured at basic prices, which exclude "taxes less subsidies on products".

2 Estimates cannot be regarded as accurate to the last digit shown.

3 Any apparent inconsistencies between the index numbers and the percentage changes shown in these tables are due to rounding.

4 A complete run of data is available on the ONS website as a [Time series dataset](#)

Sources: For further information on these data please telephone 01633 455803; fax 01633 455300 or e-mail [ios.enquiries@ons.gov.uk](mailto:ios.enquiries@ons.gov.uk)

# IOSCOMP

IOS: Index of Services  
Chained volume indices of gross value added <sup>1,2,3</sup>

seasonally adjusted 2011 = 100

continued

## Industry components (SIC2007)

Component	Other professional service activities 69-71	Other professional scientific and technical activities 73-75	Administrative and support service activities 77-82	Public admin and defence; compulsory social security 84	Education 85
<b>2011 weights</b>	<b>67</b>	<b>17</b>	<b>57</b>	<b>70</b>	<b>87</b>

### Percentage change, latest month on previous month

	KFX5	KFX9	S237	S23F	S23H
2013 Jun	0.5	2.4	0.7	-	-
Jul	1.0	-0.3	0.8	0.2	0.4
Aug	0.6	3.4	1.5	-0.1	0.1
Sep	0.2	1.0	0.7	-0.4	-0.1
Oct	-0.3	0.7	0.8	-0.2	0.1
Nov	0.3	-0.9	1.9	-0.2	-
Dec	-1.0	1.2	-0.1	-0.2	0.1
2014 Jan	0.9	-2.3	0.4	-0.2	-0.1
Feb	1.1	3.1	0.4	-0.3	0.1
Mar	1.6	2.9	1.2	-0.2	-
Apr	-0.1	1.7	0.8	-0.1	0.1
May	1.4	-3.1	1.2	-0.3	-
Jun	1.8	2.0	0.7	-0.3	0.1
Jul	-0.9	2.4	1.4	-0.1	0.1
Aug	-0.5	-3.7	-1.0	0.1	-
Sep	1.7	1.9	1.0	-	-0.1
Oct	1.3	-1.6	0.4	-0.2	-0.2
Nov	-0.5	4.3	-1.1	-0.1	-0.2
Dec	0.9	-0.3	1.9	-0.1	-
2015 Jan	-1.2	-0.6	-0.6	-0.1	0.1
Feb	1.1	-2.5	0.3	-0.1	0.2
Mar	0.3	0.6	1.7	-0.1	-
Apr	1.1	-4.9	-0.4	-0.1	-
May	1.1	3.6	-0.6	-0.1	-
Jun	1.2	1.8	1.4	-0.1	-

### Percentage change, latest 3 months on same 3 months a year ago

	KFO8	KFO4	S2HB	S2HJ	S2HL
2013 Jun	8.4	0.8	5.8	-2.3	1.0
Jul	10.4	-1.3	5.8	-2.2	0.3
Aug	11.9	0.1	6.4	-2.0	-0.3
Sep	10.6	0.8	6.0	-2.0	-0.8
Oct	9.2	3.5	5.5	-2.0	-1.0
Nov	8.6	3.7	6.7	-2.1	-0.8
Dec	7.7	3.2	7.6	-2.1	-0.3
2014 Jan	6.8	3.4	9.7	-2.0	-
Feb	6.1	5.5	10.6	-1.9	0.2
Mar	6.5	7.6	11.5	-1.8	0.2
Apr	6.5	10.2	11.6	-1.9	0.2
May	6.6	10.8	11.3	-2.0	0.2
Jun	6.8	10.2	11.0	-2.1	0.4
Jul	6.6	10.6	11.1	-2.4	0.5
Aug	6.0	8.8	10.4	-2.5	0.4
Sep	5.5	7.6	9.8	-2.5	0.3
Oct	6.2	4.6	8.8	-2.3	0.2
Nov	7.0	6.0	7.7	-2.1	-
Dec	8.0	6.4	7.2	-2.1	-0.2
2015 Jan	7.6	8.3	6.4	-1.9	-0.2
Feb	7.5	6.3	6.7	-1.8	-0.2
Mar	6.3	4.2	6.5	-1.7	-
Apr	6.3	-0.7	6.3	-1.6	-
May	6.2	-1.4	5.4	-1.5	-
Jun	6.3	-1.5	4.6	-1.4	-

1 Indices reflect values measured at basic prices, which exclude "taxes less subsidies on products".

2 Estimates cannot be regarded as accurate to the last digit shown.

3 Any apparent inconsistencies between the index numbers and the percentage changes shown in these tables are due to rounding.

4 A complete run of data is available on the ONS website as a [Time series dataset](#)

Sources: For further information on these data please telephone 01633 455803; fax 01633 455300 or e-mail [ios.enquiries@ons.gov.uk](mailto:ios.enquiries@ons.gov.uk)



continued

Industry components (SIC2007)					
	Other professional service activities	Other professional scientific and technical activities	Administrative and support service activities	Public admin and defence; compulsory social security	Education
Component	69-71	73-75	77-82	84	85
<b>2011 weights</b>	<b>67</b>	<b>17</b>	<b>57</b>	<b>70</b>	<b>87</b>

**Percentage change, latest 3 months on previous 3 months**

	KFP2	KFQ6	S2CL	S2CT	S2CV
2013 Jun	2.6	0.8	3.3	-0.4	-0.1
Jul	2.7	0.6	3.5	-0.2	-0.3
Aug	2.6	2.5	3.3	-	-0.1
Sep	2.2	3.2	3.0	-	0.2
Oct	1.5	4.9	3.1	-0.3	0.2
Nov	0.8	3.3	3.2	-0.6	0.1
Dec	-0.1	2.2	3.1	-0.7	0.1
2014 Jan	-0.2	-0.1	2.8	-0.7	0.1
Feb	0.1	0.3	1.9	-0.6	0.1
Mar	1.6	1.2	1.6	-0.7	0.1
Apr	2.4	4.5	1.7	-0.7	0.1
May	3.1	4.3	2.6	-0.7	0.1
Jun	2.9	3.2	2.8	-0.7	0.1
Jul	2.7	1.0	3.1	-0.7	0.1
Aug	1.9	0.8	2.4	-0.6	0.1
Sep	1.0	0.8	2.0	-0.4	-
Oct	1.1	-0.8	1.0	-0.2	-0.1
Nov	1.8	0.6	0.7	-0.2	-0.4
Dec	2.3	1.1	0.6	-0.3	-0.5
2015 Jan	1.1	3.4	0.5	-0.3	-0.3
Feb	0.5	0.7	1.0	-0.4	-
Mar	-	-0.9	1.0	-0.3	0.2
Apr	1.2	-4.2	1.5	-0.3	0.3
May	1.8	-3.4	1.3	-0.3	0.2
Jun	2.8	-2.5	0.9	-0.3	0.1

1 Indices reflect values measured at basic prices, which exclude "taxes less subsidies on products".

2 Estimates cannot be regarded as accurate to the last digit shown.

3 Any apparent inconsistencies between the index numbers and the percentage changes shown in these tables are due to rounding.

4 A complete run of data is available on the ONS website as a [Time series dataset](#)

Sources: For further information on these data please telephone 01633 455803; fax 01633 455300 or e-mail [ios.enquiries@ons.gov.uk](mailto:ios.enquiries@ons.gov.uk)

continued

Industry components (SIC2007)				
	Human health and social work activities	Arts, entertainment and recreation	Other service activities	Activities of households as employers
Component	86-88	90-93	94-96	97
2011 weights	91	19	27	5
	S2MC	S2MG	S2ML	S2MQ
2010	97.2	96.7	93.4	105.6
2011	100.0	100.0	100.0	100.0
2012	103.0	104.5	95.9	105.0
2013	105.0	107.8	94.3	107.0
2014	106.9	112.1	101.2	109.0
2013 Jun	104.1	108.5	93.9	99.7
Jul	104.9	108.6	92.9	100.8
Aug	105.2	108.3	93.1	102.4
Sep	105.7	109.8	93.4	108.7
Oct	105.6	111.7	95.7	110.4
Nov	105.7	109.3	94.6	112.3
Dec	105.9	110.4	94.1	110.9
2014 Jan	106.0	112.6	97.2	109.5
Feb	106.0	112.5	98.1	107.1
Mar	106.1	113.3	99.3	103.7
Apr	106.1	113.4	100.6	105.6
May	106.4	113.5	102.4	107.0
Jun	106.9	113.1	101.5	109.2
Jul	107.3	112.2	102.1	109.4
Aug	107.6	110.9	102.1	109.3
Sep	107.6	109.9	102.3	109.2
Oct	107.6	110.5	103.9	110.5
Nov	107.5	109.4	101.9	112.8
Dec	107.6	113.5	103.6	114.4
2015 Jan	107.8	111.0	102.2	116.4
Feb	108.1	112.4	104.4	117.7
Mar	108.4	112.5	103.2	119.5
Apr	108.7	111.8	102.4	119.4
May	108.9	111.8	102.6	118.3
Jun	109.0	111.4	104.1	117.2
<b>Percentage change, latest year on previous year</b>				
	S23I	S23M	S23R	S23W
2010	3.9	-2.1	-2.9	11.8
2011	2.9	3.4	7.1	-5.3
2012	3.0	4.5	-4.1	5.0
2013	1.9	3.2	-1.7	1.9
2014	1.9	4.0	7.4	1.9
<b>Percentage change, latest month on same month a year ago</b>				
	S288	S28C	S28H	S28M
2013 Jun	1.4	6.1	-1.5	-7.3
Jul	2.1	-0.2	-4.4	-10.2
Aug	2.0	-5.4	-5.2	-4.6
Sep	2.2	1.3	-1.3	2.7
Oct	2.0	7.0	3.2	4.2
Nov	2.1	4.4	2.6	5.2
Dec	2.4	7.0	2.1	3.0
2014 Jan	1.6	10.2	2.6	2.5
Feb	1.6	8.0	2.5	-4.1
Mar	1.7	7.8	4.4	-7.9
Apr	1.3	5.4	6.8	-2.9
May	1.8	5.0	8.7	8.4
Jun	2.7	4.3	8.1	9.5
Jul	2.4	3.3	9.9	8.5
Aug	2.3	2.4	9.7	6.8
Sep	1.8	0.1	9.6	0.4
Oct	1.9	-1.1	8.5	0.1
Nov	1.7	0.1	7.7	0.5
Dec	1.7	2.8	10.1	3.2
2015 Jan	1.7	-1.4	5.1	6.3
Feb	2.0	-0.1	6.5	9.9
Mar	2.1	-0.7	3.9	15.2
Apr	2.4	-1.4	1.8	13.1
May	2.3	-1.6	0.2	10.5
Jun	2.0	-1.5	2.5	7.4

1 Indices reflect values measured at basic prices, which exclude "taxes less subsidies on products".

2 Estimates cannot be regarded as accurate to the last digit shown.

3 Any apparent inconsistencies between the index numbers and the percentage changes shown in these tables are due to rounding.

4 A complete run of data is available on the ONS website as a [Time series dataset](#)

# IOSCOMP

IOS: Index of Services  
Chained volume indices of gross value added<sup>1,2,3</sup>

seasonally adjusted 2011 = 100

continued

Industry components (SIC2007)				
Component	Human health and social work activities 86-88	Arts, entertainment and recreation 90-93	Other service activities 94-96	Activities of households as employers 97
<b>2011 weights</b>	<b>91</b>	<b>19</b>	<b>27</b>	<b>5</b>

## Percentage change, latest month on previous month

	S23I	S23M	S23R	S23W
2013 Jun	-0.4	0.4	-0.4	1.0
Jul	0.7	0.2	-1.0	1.2
Aug	0.4	-0.3	0.2	1.6
Sep	0.4	1.4	0.3	6.1
Oct	-0.1	1.7	2.5	1.6
Nov	0.1	-2.1	-1.2	1.7
Dec	0.1	1.1	-0.5	-1.2
2014 Jan	0.1	1.9	3.3	-1.3
Feb	-	-0.1	0.9	-2.2
Mar	0.1	0.7	1.2	-3.1
Apr	-	0.1	1.4	1.8
May	0.3	0.1	1.8	1.4
Jun	0.4	-0.4	-0.9	2.0
Jul	0.4	-0.8	0.6	0.2
Aug	0.3	-1.2	-	-0.1
Sep	-	-0.9	0.2	-0.1
Oct	-	0.5	1.6	1.2
Nov	-0.1	-1.0	-1.9	2.1
Dec	0.1	3.8	1.7	1.5
2015 Jan	0.1	-2.2	-1.3	1.7
Feb	0.3	1.2	2.2	1.1
Mar	0.2	0.1	-1.2	1.5
Apr	0.3	-0.6	-0.7	-
May	0.2	-0.1	0.2	-0.9
Jun	0.1	-0.3	1.4	-0.9

## Percentage change, latest 3 months on same 3 months a year ago

	S2HM	S2HQ	S2HV	S2I2
2013 Jun	1.7	5.4	-2.1	-1.9
Jul	1.8	3.5	-2.7	-8.0
Aug	1.8	-0.1	-3.7	-7.4
Sep	2.1	-1.5	-3.6	-4.2
Oct	2.0	0.8	-1.2	0.7
Nov	2.1	4.2	1.5	4.0
Dec	2.2	6.1	2.6	4.1
2014 Jan	2.0	7.2	2.4	3.6
Feb	1.8	8.4	2.4	0.4
Mar	1.6	8.7	3.2	-3.3
Apr	1.5	7.1	4.6	-5.0
May	1.6	6.1	6.6	-1.2
Jun	1.9	4.9	7.9	4.8
Jul	2.3	4.2	8.9	8.8
Aug	2.4	3.3	9.2	8.2
Sep	2.1	1.9	9.7	5.1
Oct	2.0	0.4	9.2	2.3
Nov	1.8	-0.3	8.6	0.3
Dec	1.7	0.6	8.8	1.2
2015 Jan	1.7	0.5	7.6	3.3
Feb	1.8	0.4	7.2	6.4
Mar	2.0	-0.7	5.2	10.4
Apr	2.2	-0.7	4.0	12.7
May	2.3	-1.2	1.9	12.9
Jun	2.2	-1.5	1.5	10.3

1 Indices reflect values measured at basic prices, which exclude "taxes less subsidies on products".

2 Estimates cannot be regarded as accurate to the last digit shown.

3 Any apparent inconsistencies between the index numbers and the percentage changes shown in these tables are due to rounding.

4 A complete run of data is available on the ONS website as a

[Time series dataset](#)

Sources: For further information on these data please telephone 01633 455803; fax 01633 455300 or e-mail ios.enquiries@ons.gov.uk

# IOSCOMP

IOS: Index of Services  
Chained volume indices of gross value added<sup>1,2,3</sup>

seasonally adjusted 2011 = 100

continued

Industry components (SIC2007)				
	Human health and social work activities	Arts, entertainment and recreation	Other service activities	Activities of households as employers
Component	86-88	90-93	94-96	97
<b>2011 weights</b>	<b>91</b>	<b>19</b>	<b>27</b>	<b>5</b>

## Percentage change, latest 3 months on previous 3 months

	S2CW	S2D2	S2D7	S2DC
2013 Jun	0.1	4.1	-1.1	-7.2
Jul	-	2.7	-1.4	-10.1
Aug	0.2	1.5	-1.3	-5.4
Sep	0.8	0.8	-1.0	1.6
Oct	1.0	1.4	0.4	7.5
Nov	0.9	1.6	1.3	9.4
Dec	0.5	1.4	1.8	6.9
2014 Jan	0.3	0.8	1.3	3.5
Feb	0.2	1.4	2.0	-1.2
Mar	0.3	2.1	3.6	-4.0
Apr	0.2	2.1	4.2	-4.9
May	0.3	1.4	4.5	-3.4
Jun	0.4	0.5	3.4	0.5
Jul	0.7	-0.1	2.7	2.9
Aug	1.0	-1.2	1.1	3.7
Sep	1.0	-2.1	0.6	1.9
Oct	0.7	-2.3	0.7	1.0
Nov	0.3	-1.9	0.8	1.4
Dec	0.1	0.1	0.9	3.0
2015 Jan	-	0.8	-0.2	4.4
Feb	0.3	2.2	0.7	4.8
Mar	0.5	0.8	0.1	4.7
Apr	0.7	0.8	0.8	3.8
May	0.8	-0.3	-0.6	2.5
Jun	0.7	-0.3	-0.2	0.4

1 Indices reflect values measured at basic prices, which exclude "taxes less subsidies on products".

2 Estimates cannot be regarded as accurate to the last digit shown.

3 Any apparent inconsistencies between the index numbers and the percentage changes shown in these tables are due to rounding.

4 A complete run of data is available on the ONS website as a [Time series dataset](#)

Sources: For further information on these data please telephone 01633 455803; fax 01633 455300 or e-mail [ios.enquiries@ons.gov.uk](mailto:ios.enquiries@ons.gov.uk)