

# House Price Index, March 2015

Coverage: **UK**

Date: **19 May 2015**

Geographical Area: **Region**

Theme: **Economy**

Theme: **People and Places**

## Main findings

- UK house prices increased by 9.6% in the year to March 2015, up from 7.4% in the year to February 2015.
- House price annual inflation was 9.4% in England, 5.7% in Wales, 14.6% in Scotland and 7.5% in Northern Ireland. This is the highest annual increase in Scotland since July 2007.
- The pace of annual house price growth increased across the majority of the UK.
- Annual house price increases in England were driven by an annual increase in the East (11.4%), London (11.2%) and the South East (11.2%).
- Excluding London and the South East, UK house prices increased by 8.1% in the 12 months to March 2015.
- On a seasonally adjusted basis, average house prices increased by 1.1% between February and March 2015.
- In March 2015, prices paid by first-time buyers were 7.8% higher on average than in March 2014. For owner-occupiers (existing owners), prices increased by 10.3% for the same period.

## About this statistical bulletin

The Office for National Statistics (ONS) House Price Index (HPI), previously published by the Department for Communities and Local Government (DCLG), is a monthly release that publishes figures for mix-adjusted average house prices and house price indices for the UK, its component countries and regions.

The index is calculated using mortgage financed transactions that are collected via the regulated mortgage survey by the Council of Mortgage Lenders. These cover the majority of mortgage lenders

in the UK. The HPI complements other measures of inflation published by us such as the consumer price indices, the producer price indices and the services producer price indices.

This statistical bulletin provides comprehensive information on the change in house prices on a monthly and annual basis. It also includes analysis by country, region, type of buyer (first-time buyers and former owner-occupiers) and type of dwelling (new dwelling or pre-owned dwelling). Historical series for all accompanying tables that transferred from DCLG are also available in the data section of this release.

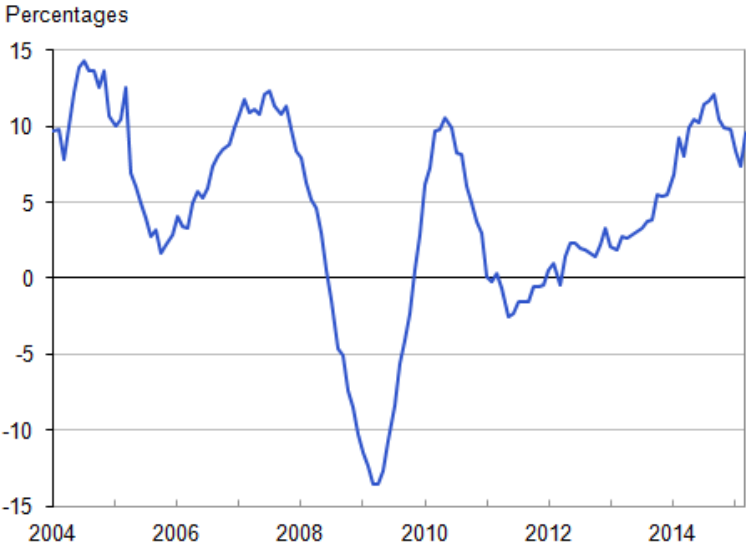
The figures published in this release are not seasonally adjusted unless otherwise stated.

### House price index UK summary

UK average house prices increased by 9.6% over the year to March 2015, up from an increase of 7.4% in the year to February 2015 (Figure 1). This is the first increase in the pace of annual UK house price inflation since September 2014. The average UK mix-adjusted house price in March 2015 was £273,000.

**Figure 1: Annual house price rates of change, UK all dwellings from January 2004 to March 2015**

12 month percentage change



Source: Office for National Statistics

**Notes:**

- 1. Not seasonally adjusted.
- 2. Data collected via the regulated mortgage survey.

**Download chart**[XLS](#) [XLS format](#)

(35.5 Kb)

In March 2015, the UK mix-adjusted house price index increased to a record level of 209.7 (Figure 2). This is 1.0% higher than the record level witnessed in August 2014, when the index reached 207.7 and 13.0% higher than the pre-economic downturn peak of 185.5 in January 2008.

**Figure 2: Index values, UK all dwellings from January 2004 to March 2015**

Index values February 2002=100



Source: Office for National Statistics

**Notes:**

1. Not seasonally adjusted.
2. Data collected via the regulated mortgage survey.

**Download chart**[XLS](#) [XLS format](#)

(35.5 Kb)

On a seasonally adjusted basis, average house prices increased by 1.1% between February and March 2015, compared to a fall of 0.8% in average prices during the same period a year earlier.

**Table A: house price index - summary of UK all dwellings, March 2015**

Index - February 2002=100

		house price index: UK all dwellings				
		Percentage 12 month change		Index	Percentage monthly change	
		NSA	NSA	SA	SA	NSA
		£				
2013	Jan	179.2	2.1	178.8	-0.6	237,000
	Feb	176.1	1.9	178.6	-0.1	233,000
	Mar	177.3	2.7	179.8	0.6	235,000
	Apr	179.7	2.6	180.2	0.2	238,000
	May	180.2	2.9	180.9	0.4	239,000
	Jun	182.5	3.1	181.8	0.5	242,000
	Jul	185.0	3.3	182.1	0.2	245,000
	Aug	185.9	3.7	183.1	0.5	246,000
	Sep	185.0	3.8	183.7	0.3	245,000
	Oct	186.4	5.5	186.6	1.7	247,000
	Nov	187.2	5.4	187.7	0.6	248,000
	Dec	188.5	5.5	189.6	0.9	250,000
2014	Jan	191.3	6.8	191.1	1.0	252,000
	Feb	192.2	9.2	194.8	1.8	253,000
	Mar	191.4	8.0	193.6 R	-0.8 R	252,000
	Apr	197.5	9.9	197.7 R	2.1	260,000
	May	198.9	10.4	199.4 R	0.9	262,000
	Jun	201.2	10.2	200.5	0.6 R	265,000
	Jul	206.2	11.5	203.2 R	1.4	272,000
	Aug	207.7	11.7	204.8	0.8	274,000
	Sep	207.3	12.1	205.8	0.5	273,000
	Oct	205.8	10.4	206.1	0.1	271,000
	Nov	205.7	9.9	206.5 R	0.2 R	271,000
	Dec	206.9	9.8	208.0 R	0.7	272,000
2015	Jan	207.4	8.4	207.7 R	-0.1	270,000 R
	Feb	206.5	7.4	209.5 R	0.9 R	269,000 R

Mar	209.7	9.6	211.8	1.1	273,000
-----	-------	-----	-------	-----	---------

---

**Table source:** Office for National Statistics

**Table notes:**

1. Average house prices are not comparable between years as they reflect a different mix of houses being transacted. Indices have been chain linked so they are comparable year-on-year. For more information please see the re-weighting section in the background notes.
2. SA = Seasonally adjusted.
3. NSA = Not seasonally adjusted.

**Download table**

[XLS](#) [XLS format](#)

(34.5 Kb)

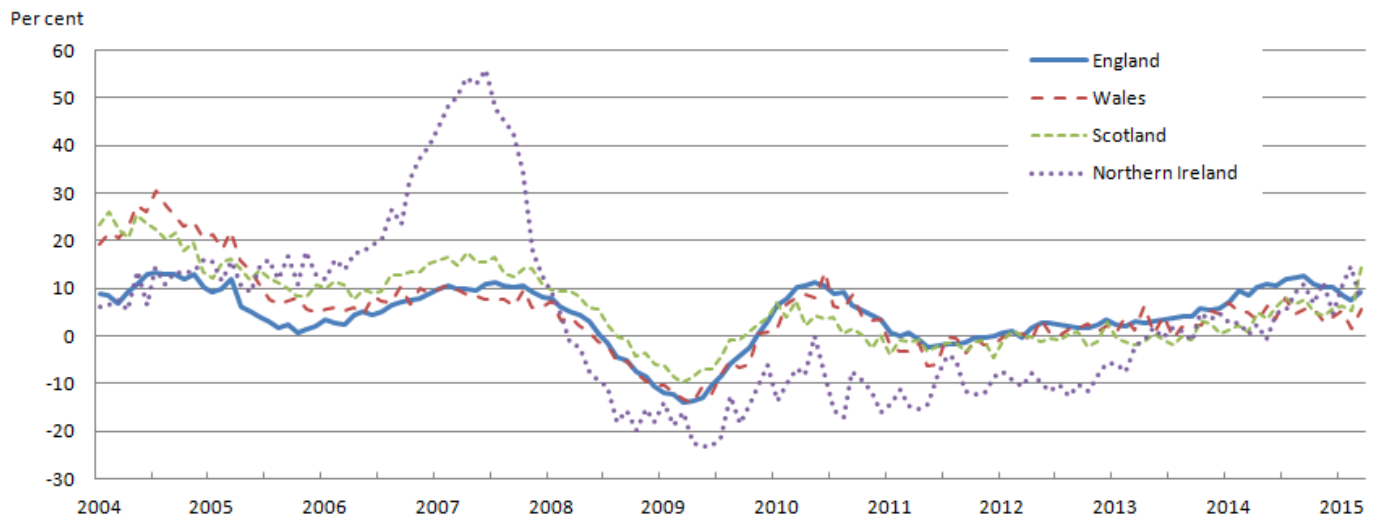
## House price index by country

During the year to March 2015, average house prices increased 9.4% in England (up from 7.7 in the year to February 2015), 5.7% in Wales (up from 1.4%), 14.6% in Scotland (up from 5.3%) and 7.5% in Northern Ireland (down from 14.7%).

This is the highest annual increase in Scotland house prices since July 2007 (Figure 3). The number of mortgages for house sales in Scotland increased by approximately 50% between February and March 2015. A significant proportion of this increase in sales was for houses costing more than £500,000. These factors, along with a relatively small annual increase in Scotland prices of 0.8% in March 2014, have led to the price index for Scotland increasing by 14.6% when compared to a year earlier. It should also be noted that the land and buildings transaction tax replaced UK stamp duty land tax in Scotland from 1 April 2015, which may have had an impact on the increase in prices.

**Figure 3: All dwellings annual house price rates of change by country, January 2004 to March 2015**

12 month percentage change



Source: Office for National Statistics

**Notes:**

1. Not seasonally adjusted.
2. Data collected via the regulated mortgage survey.
3. Please click on the image to view a larger version.

**Download chart**

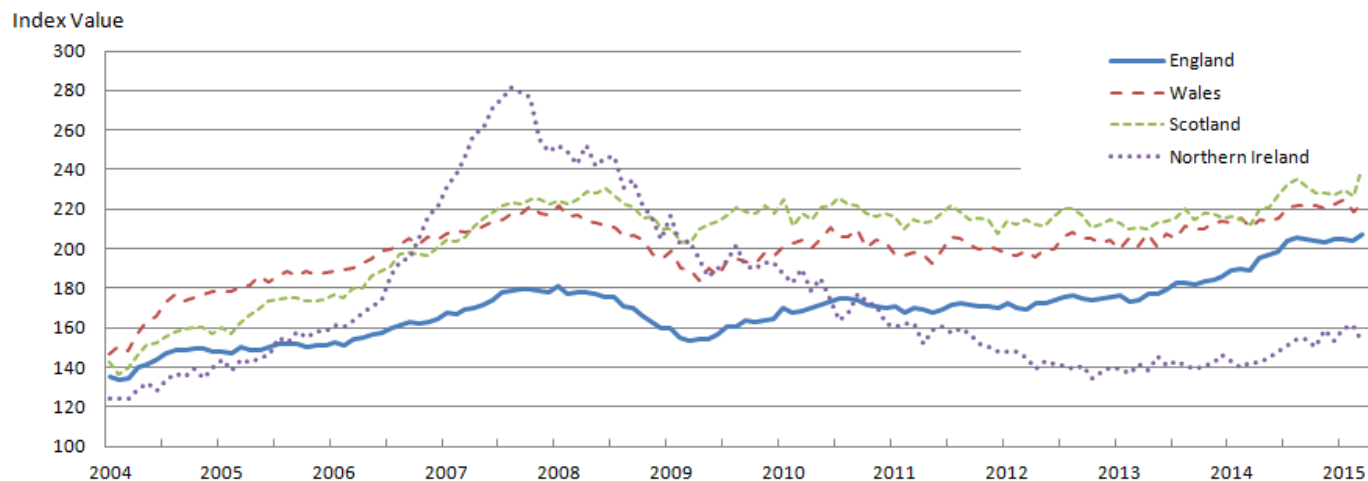
[XLS](#) [XLS format](#)  
(38.5 Kb)

In March 2015, the England and Scotland house price indices increased to record levels (Figure 4).

The index for England reached 207.0 in March 2015. This is 0.8% above the the previous record level witnessed in August 2014 (205.3) and 14.5% higher than the pre-economic downturn peak in January 2008 of 180.8. The index for Scotland (243.2) in March 2015 is 3.5% above the previous record level witnessed in August 2014 (234.9). Scotland prices are now 5.5% above the pre-economic downturn peak of June 2008 (230.6). The index for Wales (223.1) in March 2015 is 0.7% below the record level of 224.6 in January 2015. However, house prices in Wales are 0.5% higher than the pre-economic downturn peak of January 2008 (222.1). The index for Northern Ireland (152.7) in March 2015 is 45.8% below the peak of August 2007 (281.5).

**Figure 4: Mix-adjusted house price index by UK countries from January 2004 to March 2015**

Index level (Feb 2002=100)



Source: Office for National Statistics

**Notes:**

1. Not seasonally adjusted.
2. Data collected via the regulated mortgage survey.
3. Please click on the image to view a larger version.

**Download chart**
[XLS](#) [XLS format](#)

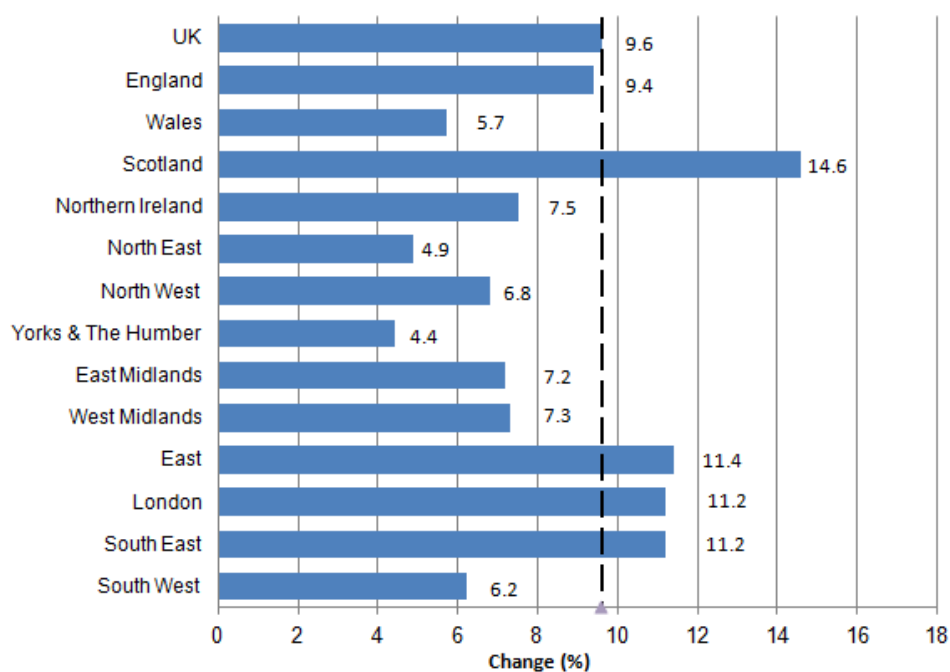
(40 Kb)

**House price index by region**

The pace of annual house price growth picked up across the majority of the 9 English regions (Figure 5). The largest annual increase was in the East at 11.4% (up from 11.2% in the year to February 2015) followed by London (11.2% increase in the year to March 2015, up from 9.1%) and the South East (11.2% increase in the year to March 2015, up from 8.5%). The lowest growth in March 2015 was in Yorkshire and The Humber; here prices increased by 4.4% over the year. Excluding London and the South East, UK house prices increased by 8.1% over the year to March 2015, up from 6.1% in the year to February 2015.

**Figure 5: All dwellings annual house price rates of change: UK, country and regions**

12 month percentage change for March 2015



Source: Office for National Statistics

**Notes:**

1. Not seasonally adjusted.
2. Data collected via the regulated mortgage survey.

**Download chart**
[XLS](#) [XLS format](#)

(34.5 Kb)

This month, a number of English regions have seen house prices increase to record levels (Figure 6).

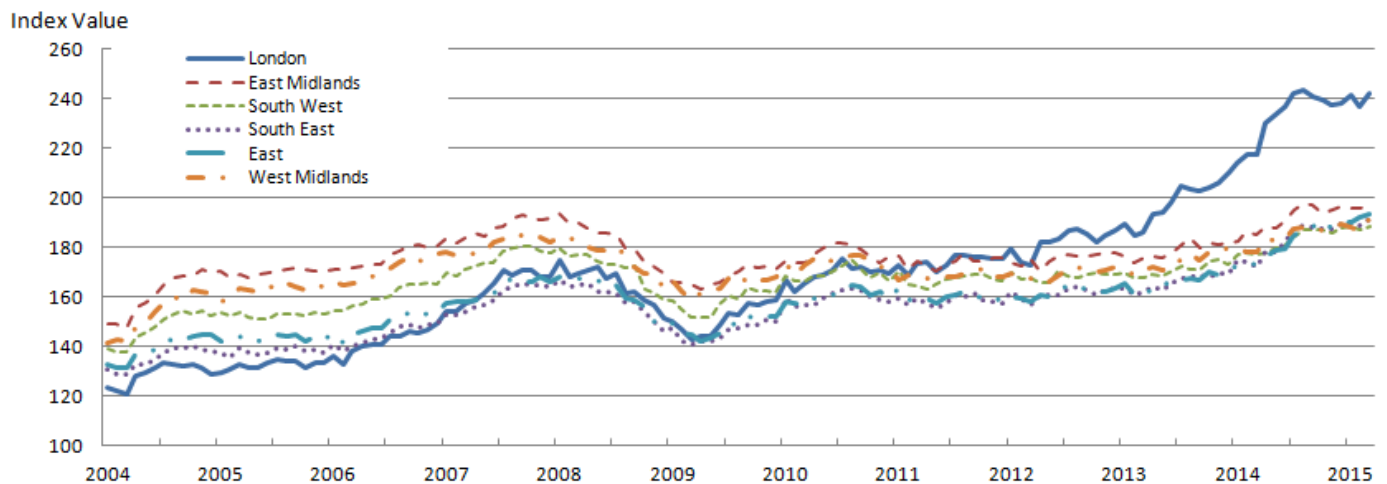
The price index for the East of England reached a record level of 193.3 in March 2015. This is up 0.7% from the previous record in February 2015 (192.0) and 14.8% higher than the pre-economic downturn peak in January 2008 (168.4). The price index for the East Midlands reached a joint record level of 198.1 in March 2015 (along with August 2014). The price index for the East Midlands is 2.4% higher than the pre-economic downturn peak in January 2008 (193.5). The price index for the West Midlands reached a record level of 191.3 in March 2015. This is up 0.8% from the previous record in December 2014 (189.7) and 3.2% higher than the pre-economic downturn peak in October 2007 (185.4). The price index for the South East reached a record level of 191.3 in March 2015. This is up 1.1% from the previous record in December 2014 (189.2) and 14.9% higher than the pre-economic downturn peak in January 2008 (166.5). The price index for the South West reached a record level of 188.4 in March 2015. This is up 0.1% from the previous record in January 2015 (188.2) and 4.3% higher than the pre-economic downturn peak in October 2007 (180.7).



The price index for London is now 0.6% below the record level of 243.5 in August 2014 with an index of 242.1 in March 2015. However, the London index is 38.7% higher than the pre-economic downturn peak in January 2008 (174.5).

### Figure 6: Mix-adjusted house price index by selected regions from January 2004 to March 2015

Index level (Feb 2002=100)



Source: Office for National Statistics

#### Notes:

1. Not seasonally adjusted.
2. Data collected via the regulated mortgage survey.
3. Please click on the image to view a larger version.

#### Download chart

[XLS](#) [XLS format](#)

(41.5 Kb)

## Average house prices in countries and regions

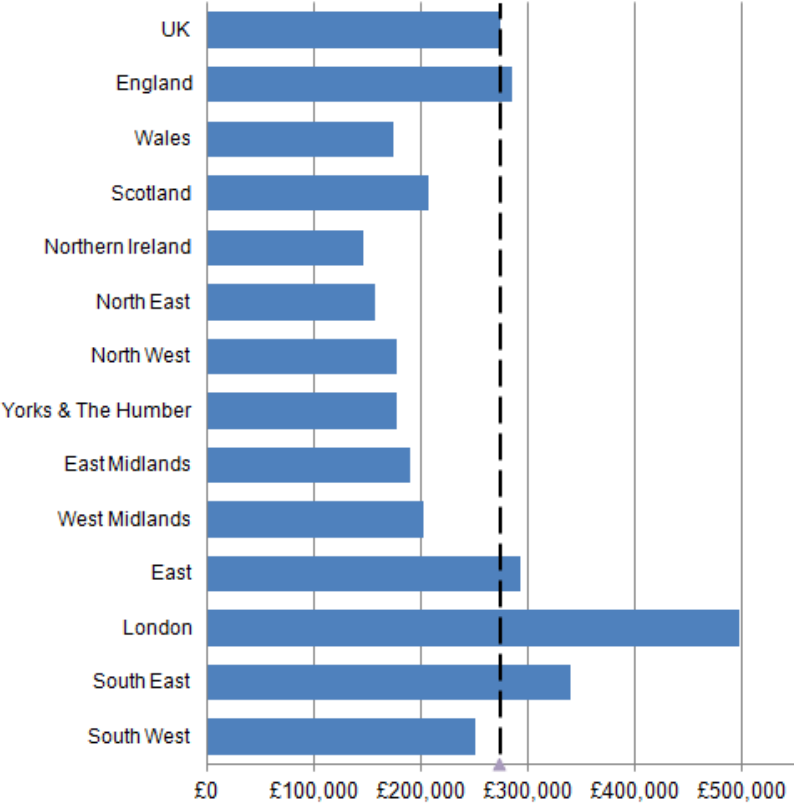
Average mix-adjusted house prices in March 2015 stood at £284,000 in England, £173,000 in Wales, £145,000 in Northern Ireland and £207,000 in Scotland (Figure 7).

In March 2015, London continued to be the English region with the highest average house price at £498,000 and the North East had the lowest average house price at £157,000. London, the South East and the East all had prices higher than the UK average price of £273,000.

Excluding London and the South East, the average UK mix-adjusted house price was £211,000.

**Figure 7: Mix-adjusted average house price: UK, country and region**

House Prices for March 2015



Source: Office for National Statistics

**Notes:**

- 1. Not seasonally adjusted.
- 2. Data collected via the regulated mortgage survey.

**Download chart**

[XLS](#) [XLS format](#)  
(28.5 Kb)

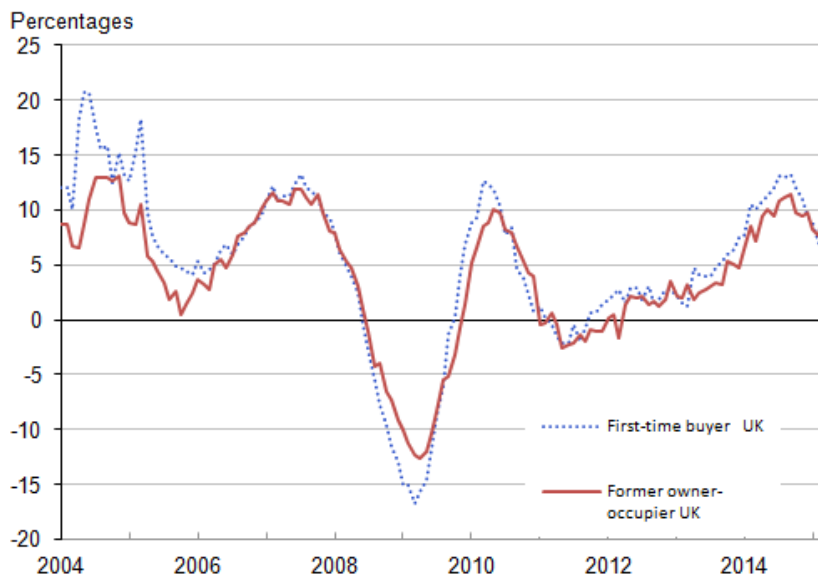
**House price index by type of buyer**

The average price for properties bought by first-time buyers increased by 7.8% over the year to March 2015, up from an increase of 6.8% in February 2015 (Figure 8). In March 2015, the average price paid for a house by a first-time buyer was £206,000.

The average price for properties bought by former owner-occupiers (existing owners) increased by 10.3% in the year to March 2015, up from an increase of 7.7% in February 2015. In March 2015, the average price paid for a house by a former owner-occupier was £319,000.

### Figure 8: UK annual house price rates of change by type of buyer, January 2004 to March 2015

12 month percentage change



Source: Office for National Statistics

#### Notes:

1. Not seasonally adjusted.
2. Data collected via the regulated mortgage survey.

#### Download chart

[XLS](#) [XLS format](#)

(37 Kb)

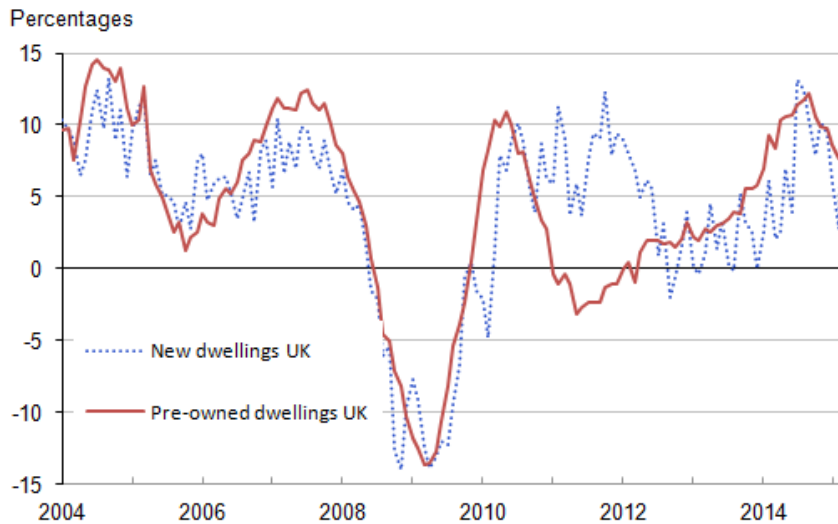
### House price index by new and pre-owned dwellings

During the year to March 2015, prices paid for new dwellings increased by 13.6% on average, compared with an increase of 2.8% in the year to February 2015 (Figure 9). The average UK house price for new dwellings in March 2015 was £274,000.

During the year to March 2015, prices paid for pre-owned dwellings increased by 9.2% on average, compared with an increase of 7.7% in the year to February 2015. The average UK house price for pre-owned dwellings in March 2015 was £273,000.

**Figure 9 : UK annual house price rates of change by type of dwelling, January 2004 to March 2015**

12 month percentage change



Source: Office for National Statistics

**Notes:**

1. Not seasonally adjusted.
2. Data collected via the regulated mortgage survey.

**Download chart**

[XLS](#) [XLS format](#)  
(37 Kb)

**Data tables**

The [HPI monthly and quarterly reference table \(3.59 Mb Excel sheet\)](#) provides full historical series for the monthly tables accompanying the house price index statistical bulletin. This month, tables 1 to 9 have been updated with the latest monthly estimates for March 2015. The seasonally adjusted figures in Table 7 have been revised this month as scheduled. This month, tables 10 to 19 have been updated with the latest data for the first quarter of 2015.

The [HPI annual reference table \(1.18 Mb Excel sheet\)](#) contains all the annual live tables. No annual tables have been updated this month. The next set of updates to annual tables will be in July 2015.

The [HPI weights summary \(79.5 Kb Excel sheet\)](#) reference table provides a summary of the aggregated mix-adjustment weights used in the production of the HPI for the period 2011 to 2015. The mix-adjustment weights are updated in the February HPI each year.

## Annual house price statistics for small areas

We published [annual house price statistics for small areas](#) alongside the December 2014 HPI, covering the period 1995 to 2013. This dataset will be updated to include 2014 data alongside the April 2015 HPI, to be published on Tuesday 16 June 2015.

For further information, please contact [hpi@ons.gsi.gov.uk](mailto:hpi@ons.gsi.gov.uk)

## How are we doing?

We would welcome your views on the data presented in this statistical bulletin. Please contact the house price index team using the email address below to discuss any aspect of the data, including your views on how we can improve the data.

[hpi@ons.gsi.gov.uk](mailto:hpi@ons.gsi.gov.uk)

## Background notes

### 1. New this month

New house price data for March 2015 are published this month. The [monthly and quarterly reference table \(3.59 Mb Excel sheet\)](#) has been updated to include data for March 2015 and the first quarter of 2015.

### Revisions this month

January and February 2015 data have been revised this month to incorporate transactions from those lenders that provide data on a quarterly basis. There are small revisions to the seasonally adjusted series for the last 12 months, which are expected from the monthly seasonal adjustment process.

### Revisions next month

No revisions are expected for the April 2015 HPI, apart from the normal revisions to the latest 12 months that follow the monthly seasonal adjustment process.

### 2. Relevance of the ONS House Price Index

The ONS HPI is an important measure of house price inflation for the UK and together with the Land Registry HPI, it is one of the main house price indices used by central and local government to support decision making in the UK. Other users include private individuals, surveyors and analysts in financial institutions.

The ONS HPI is also an important input into the housing cost component of RPIJ and RPI retail price indices. Each month a customised HPI delivery is produced using a sub-sample of the full data set for use in RPIJ and RPI.

### 3. Revisions policy

At the end of every quarter, as well as releasing final figures for the latest month, we revise the figures from the previous 2 months. This is done because some mortgage lenders, which account for 1 to 2% of all records, provide their data on a quarterly rather than monthly basis. Additionally, data will be revised for the previous month if more than 1,000 additional cases are received in a subsequent month.

In July 2013, the methodology used to seasonally adjust the HPI was updated following a review and brings the HPI in line with our best practice for seasonal adjustment. Seasonal factors are now estimated on a monthly basis and therefore may result in small revisions to the previous 12 months data. This updated process improves the accuracy of the seasonally adjusted figures.

Other revisions to historical data (other than those currently due for revision) will be made only if the revision is substantial.

In all cases, the revised figures are labelled with a 'R' and the reason for the revision explained under the 'New this month' section of the background notes.

### 4. Methodology

#### Data sources

Since October 2005 the ONS HPI (formerly the DCLG HPI) has been based on a sample of mortgage completions data from the Regulated Mortgage Survey (RMS) as collected by the Council of Mortgage Lenders (CML).

The number of transactions received from the RMS is affected by the total number of mortgages completed for house purchase in any period. During 2011 the sample covered 65-70% of all UK mortgage completions.

#### Quality

A [Quality and Methodology Information \(QMI\) \(131.8 Kb Pdf\)](#) paper for the HPI describes in detail the intended uses of the statistics presented in this publication, their general quality and the methods used to produce them.

#### Price methodology

The ONS HPI is mix-adjusted to allow for differences between houses sold (for example type, number of rooms, location) in different months within a year. House prices are modelled using a combination of characteristics to produce a model containing around 100,000 cells (one such cell could be first-time buyer, old dwelling, one bedroom flat purchased in London). Each month estimated prices for all cells are produced by the model and then combined with their appropriate weight to produce mix-adjusted average prices. The index values are based on growth rates in the mix-adjusted average house prices and are annually chain linked. More information on the model used is available via [the hedonic model methodology paper \(246.4 Kb Pdf\)](#) published on the [HPI user guidance webpage](#).

## Re-weighting

The ONS HPI is a weighted Laspeyres-type index. In January of each year the index weights are updated based on the relative numbers of transactions during the previous three years, which are grossed to total transactions obtained from Land Registry. Applying new weights ensures that the index keeps up to date with changes in the types of properties that are being purchased, and therefore reflects the price of the average property. A high level summary of the weights used in the calculation of the ONS HPI can be found in the [HPI weights summary reference table \(74 Kb Excel sheet\)](#).

One consequence of changing the weights every year is that the mix-adjusted house prices cannot be compared between years as the weights are different. The index itself is constructed on a chain-linked basis, which enables year-on-year comparisons to be made. This means that the year-on-year change in the index for June 2011, say, is effectively the change in the average price from June to January 2011 (using the weights for 2010) combined with the change in the average price from January to June 2011 using the weights for 2011. Therefore, the year-on-year change in the index is not the same as the year-on-year change in the mix-adjusted average price. More information on the [HPI methodology](#) is available on the [GOV.UK](#) website.

## Seasonal adjustment

The housing market shows seasonal effects that affect house prices. For example, prices have tended to be higher during the summer months than during the winter months. These seasonal effects are estimated and adjusted for in order to calculate month-on-month price changes. Seasonally adjusted figures are provided at a national level in Table 7 alongside the non-seasonally adjusted figures of the other tables. Seasonal adjustment is performed each month and reviewed each year, using the standard and widely used software X-13-ARIMA. Seasonally adjusted house price estimates are used to report monthly percentage changes. All other figures such as annual rates of change and average house prices are based on non-seasonally adjusted estimates, unless otherwise stated.

## 5. Other house price statistics

Currently there are a number of different sources of house price statistics published in addition to the ONS HPI. There will be differences in the data published by each source as there are differences in both the data and methodology used. Therefore the ONS HPI is not directly comparable with these other indicators. Further details on the differences between official house price statistics can be found in the article [Official House Price Statistics Explained \(974.4 Kb Pdf\)](#).

## Land Registry house price index

All residential property transactions in England and Wales are recorded by Land Registry. These transactions are used for calculating the Land Registry index. This index is based on repeat-sales regression, which calculates the change in price of any property transacted twice since 1995. Therefore new build properties are excluded from the index. Land Registry publishes

indices at a sub-regional level. The Land Registry HPI is normally published on the 20th working day of every month, and refers to all transactions of the preceding month.

The Land Registry HPI can be accessed via the [Land Registry's website](#).

### **Registers of Scotland official quarterly housing market statistics**

Registers of Scotland records all the property transactions in Scotland. It produces average house prices based on arithmetic means of these transactions, which is published as the [quarterly housing market statistics](#) in the second month after the month to which the figures refer to.

### **Northern Ireland residential property price index**

The Land and Property Services assisted by the Northern Ireland Statistics and Research Agency (NISRA) publish a [quarterly residential property prices index \(RPPI\) for Northern Ireland](#). The index measures change in the price of residential property sales recorded by Her Majesty's Revenue and Customs. This is a new official statistic, first published in quarter 1 of 2012.

### **Halifax house price index and Nationwide house price index**

Both [Halifax](#) and [Nationwide](#) produce house price indices based on their own mortgage approvals only and therefore, like the ONS HPI, will not include any cash transactions. They both have UK-wide coverage, and since the Halifax and Nationwide use only their own in-house data they can process them immediately and do not have to await the receipt of data from other lenders. This means that they are more timely than the ONS HPI.

### **LSL Acadata house price index**

The LSL Acadata (previously the LSL Property Services/Acadametrics) HPI is the only house price index to reflect all transactions, as opposed to data samples, and provides mix and seasonally adjusted results at national, regional and county or unitary district or London borough levels.

The index can be accessed at [Acadata](#).

## **6. Accessibility**

This bulletin includes the March 2015 data. Future publication dates for this statistical bulletin are available via the [release calendar](#).

## **7. General**

Details of the policy governing the release of new data are available from the Media Relations Office. Also available is a list of the names of those given [pre-release access](#) to the contents of this release.



Follow us on [Twitter](#) or join us at [Facebook](#)

View the latest podcasts in [Youtube](#)

8. Details of the policy governing the release of new data are available by visiting [www.statisticsauthority.gov.uk/assessment/code-of-practice/index.html](http://www.statisticsauthority.gov.uk/assessment/code-of-practice/index.html) or from the Media Relations Office email: [media.relations@ons.gsi.gov.uk](mailto:media.relations@ons.gsi.gov.uk)

## Copyright

© Crown copyright 2015

You may use or re-use this information (not including logos) free of charge in any format or medium, under the terms of the Open Government Licence. To view this licence, visit [www.nationalarchives.gov.uk/doc/open-government-licence/](http://www.nationalarchives.gov.uk/doc/open-government-licence/) or write to the Information Policy Team, The National Archives, Kew, London TW9 4DU, or email: [psi@nationalarchives.gsi.gov.uk](mailto:psi@nationalarchives.gsi.gov.uk).

This document is also available on our website at [www.ons.gov.uk](http://www.ons.gov.uk).

## Statistical contacts

Name	Phone	Department	Email
Christopher Jenkins	+44 (0)1633 455474	Office for National Statistics	<a href="mailto:christopher.jenkins@ons.gsi.gov.uk">christopher.jenkins@ons.gsi.gov.uk</a>

---

### Next Publication Date:

16 June 2015

### Issuing Body:

Office for National Statistics

### Media Contact Details:

Telephone: 0845 604 1858  
(8.30am-5.30pm Weekdays)

Emergency out of hours (limited service): 07867 906553

Email:

[media.relations@ons.gsi.gov.uk](mailto:media.relations@ons.gsi.gov.uk)







**3 Mix-adjusted House Price Index and annual house price change by type of buyer, UK (DCLG table A3)**  
Type of buyer, All dwellings

not seasonally adjusted		
	Former Owner	Former Owner
	First time buyer	Occupier
	UK	UK
<b>Index level (Feb 2002=100.0)</b>		
2008 Jan	187.9	185.4
Feb	184.9	181.9
Mar	185.7	181.9
Apr	186.7	182.6
May	186.3	180.8
Jun	183.8	179.9
Jul	182.8	180.1
Aug	177.2	175.3
Sep	173.1	176.4
Oct	169.5	172.0
Nov	164.4	169.7
Dec	162.2	165.2
2009 Jan	159.5	166.7
Feb	157.3	161.3
Mar	154.6	159.3
Apr	157.3	159.4
May	159.1	159.1
Jun	162.4	161.3
Jul	166.5	165.2
Aug	166.3	165.7
Sep	170.8	167.3
Oct	169.6	166.6
Nov	171.0	168.3
Dec	173.3	167.5
2010 Jan	173.6	175.4
Feb	171.8	172.0
Mar	174.1	173.0
Apr	176.8	173.5
May	178.1	175.2
June	179.1	177.1
July	179.4	178.9
Aug	180.3	178.9
Sep	178.7	178.5
Oct	176.0	175.4
Nov	174.9	175.5
Dec	174.5	174.1
2011 Jan	175.8	174.7
Feb	172.1	171.5
Mar	173.2	174.0
Apr	174.2	172.8
May	174.3	170.6
June	175.3	173.0
July	178.6	175.1
Aug	176.9	176.4
Sep	177.5	175.1
Oct	177.0	173.8
Nov	176.2	173.7
Dec	177.0	172.2
2012 Jan	179.1	174.9
Feb	176.0	172.3
Mar	178.0	171.2
Apr	176.7	175.2
May	179.3	174.2
Jun	180.3	176.5
Jul	181.9	178.8
Aug	182.2	178.9
Sep	180.2	178.1
Oct	180.2	176.1
Nov	181.0	177.0
Dec	181.7	178.3
2013 Jan	182.7	178.6
Feb	178.9	175.7
Mar	180.4	176.8
Apr	185.1	178.4
May	186.6	178.4
Jun	187.3	181.4
Jul	189.2	184.2
Aug	190.7	184.9
Sep	189.8	183.9
Oct	190.9	185.4
Nov	192.6	185.9
Dec	195.2	186.7
2014 Jan	196.6	190.1
Feb	197.8	190.8
Mar	198.3	189.5
Apr	205.0	195.3
May	207.7	196.3
Jun	209.9	198.6
Jul	214.0	204.1
Aug	215.3	205.6
Sep	215.1	205.1
Oct	213.8	203.5
Nov	213.8	203.4
Dec	213.8	205.1
2015 Jan <sup>R</sup>	213.9	205.8
Feb <sup>R</sup>	211.3	205.5
Mar	213.9	209.1

Notes  
R = data revised

**4 Mix-adjusted average house prices by type of buyer, UK (DCLG table A4)**  
Type of buyer, All dwellings

E, not seasonally adjusted		
	Former Owner	Former Owner
	First time buyer	Occupier
	UK	UK
2008 Jan <sup>1</sup>	163,000	256,000
Feb	161,000	251,000
Mar	161,000	251,000
Apr	162,000	252,000
May	162,000	249,000
Jun	160,000	248,000
Jul	159,000	248,000
Aug	154,000	242,000
Sep	150,000	243,000
Oct	147,000	237,000
Nov	143,000	234,000
Dec	141,000	228,000
2009 Jan <sup>1</sup>	138,000	230,000
Feb	136,000	223,000
Mar	134,000	220,000
Apr	136,000	220,000
May	137,000	220,000
Jun	140,000	223,000
Jul	144,000	228,000
Aug	144,000	229,000
Sep	148,000	231,000
Oct	146,000	230,000
Nov	148,000	233,000
Dec	150,000	231,000
2010 Jan <sup>1</sup>	151,000	242,000
Feb	150,000	237,000
Mar	152,000	239,000
Apr	154,000	240,000
May	155,000	242,000
June	156,000	244,000
July	156,000	247,000
Aug	157,000	247,000
Sep	156,000	246,000
Oct	153,000	242,000
Nov	152,000	242,000
Dec	152,000	240,000
2011 Jan <sup>1</sup>	161,000	250,000
Feb	157,000	245,000
Mar	158,000	249,000
Apr	159,000	247,000
May	159,000	244,000
June	160,000	247,000
July	163,000	250,000
Aug	162,000	252,000
Sep	162,000	250,000
Oct	162,000	248,000
Nov	161,000	248,000
Dec	162,000	246,000
2012 Jan <sup>1</sup>	171,000	263,000
Feb	168,000	259,000
Mar	170,000	258,000
Apr	169,000	264,000
May	171,000	262,000
Jun	172,000	266,000
Jul	174,000	269,000
Aug	174,000	269,000
Sep	172,000	268,000
Oct	172,000	265,000
Nov	173,000	266,000
Dec	174,000	268,000
2013 Jan <sup>1</sup>	177,000	273,000
Feb	173,000	269,000
Mar	175,000	270,000
Apr	179,000	273,000
May	181,000	273,000
Jun	182,000	277,000
Jul	183,000	282,000
Aug	185,000	283,000
Sep	184,000	281,000
Oct	185,000	284,000
Nov	187,000	284,000
Dec	189,000	286,000
2014 Jan <sup>1</sup>	191,000	291,000
Feb	192,000	292,000
Mar	193,000	290,000
Apr	199,000	299,000
May	202,000	301,000
Jun	204,000	304,000
Jul	208,000	313,000
Aug	209,000	315,000
Sep	209,000	314,000
Oct	208,000	312,000
Nov	208,000	312,000
Dec	208,000	314,000
2015 Jan <sup>1 R</sup>	206,000	314,000
Feb <sup>R</sup>	204,000	314,000
Mar	206,000	319,000

Notes  
1 See footnote 1 in Table 2  
R = data revised

**3 Mix-adjusted House Price Index and annual house price change by type of buyer, UK (DCLG table A3)**  
**Type of buyer, All dwellings**

not seasonally adjusted		
	First time buyer UK	Former Owner Occupier UK
Percentage change on a year earlier		
2009 Jan	-15.1	-10.1
Feb	-15.0	-11.3
Mar	-16.7	-12.4
Apr	-15.7	-12.7
May	-14.6	-12.0
Jun	-11.7	-10.3
Jul	-8.9	-8.3
Aug	-6.1	-5.5
Sep	-1.3	-5.2
Oct	0.1	-3.2
Nov	4.0	-0.8
Dec	6.8	1.4
2010 Jan	8.9	5.2
Feb	9.3	6.6
Mar	12.6	8.6
Apr	12.4	8.8
May	11.9	10.1
June	10.3	9.8
July	7.8	8.3
Aug	8.4	8.0
Sep	4.6	6.7
Oct	3.8	5.3
Nov	2.3	4.3
Dec	0.7	3.9
2011 Jan	1.2	-0.4
Feb	0.2	-0.3
Mar	-0.5	0.6
Apr	-1.5	-0.4
May	-2.1	-2.6
June	-2.1	-2.3
July	-0.5	-2.1
Aug	-1.9	-1.4
Sep	-0.7	-1.9
Oct	0.6	-0.9
Nov	0.7	-1.0
Dec	1.4	-1.0
2012 Jan	1.9	0.1
Feb	2.3	0.5
Mar	2.8	-1.6
Apr	1.5	1.4
May	2.9	2.1
Jun	2.9	2.0
Jul	1.9	2.1
Aug	3.0	1.4
Sep	1.5	1.7
Oct	1.8	1.3
Nov	2.7	1.9
Dec	2.7	3.5
2013 Jan	2.1	2.1
Feb	1.6	2.0
Mar	1.3	3.2
Apr	4.8	1.8
May	4.1	2.5
Jun	3.9	2.7
Jul	4.0	3.0
Aug	4.7	3.3
Sep	5.3	3.2
Oct	5.9	5.3
Nov	6.4	5.0
Dec	7.4	4.7
2014 Jan	7.6	6.4
Feb	10.5	8.6
Mar	10.0	7.2
Apr	10.8	9.5
May	11.3	10.0
Jun	12.0	9.5
Jul	13.1	10.8
Aug	12.9	11.2
Sep	13.3	11.5
Oct	12.0	9.8
Nov	11.0	9.4
Dec	9.5	9.8
2015 Jan <sup>R</sup>	8.8	8.3
Feb <sup>R</sup>	6.8	7.7
Mar	7.8	10.3

Notes R = data revised

**5 Mix-adjusted House Price Index and annual house price change by whether dwelling is new or second-hand, UK (DCLG table A5)**

New or second-hand, all dwellings

not seasonally adjusted		
	New dwellings	Pre-owned dwellings
	UK	UK
Index level (Feb 2002=100.0)		
2008 Jan	175.5	186.5
Feb	174.5	183.0
Mar	173.2	183.3
Apr	174.9	184.0
May	170.0	182.8
Jun	169.0	181.5
Jul	166.0	181.5
Aug	158.2	176.7
Sep	160.6	176.3
Oct	148.6	172.6
Nov	145.9	169.5
Dec	156.0	164.7
2009 Jan	162.1	164.7
Feb	158.6	160.1
Mar	151.6	158.3
Apr	150.7	159.2
May	147.9	159.7
Jun	148.7	162.3
Jul	145.8	166.7
Aug	143.3	167.2
Sep	150.0	169.3
Oct	147.7	168.6
Nov	146.7	170.4
Dec	153.6	170.0
2010 Jan	158.7	175.8
Feb	151.0	173.3
Mar	153.5	174.5
Apr	162.5	175.0
May	157.9	177.1
June	162.0	178.5
July	160.5	180.2
Aug	156.0	180.8
Sep	158.4	179.8
Oct	153.6	176.9
Nov	159.5	176.2
Dec	163.3	174.7
2011 Jan	168.1	175.2
Feb	168.0	171.6
Mar	167.5	173.9
Apr	168.5	173.2
May	167.2	171.7
June	167.9	173.7
July	172.5	176.0
Aug	170.7	176.7
Sep	172.8	175.7
Oct	172.4	174.6
Nov	172.0	174.2
Dec	178.6	172.9
2012 Jan	183.1	175.2
Feb	181.4	172.5
Mar	179.0	172.4
Apr	176.9	175.1
May	177.5	175.1
Jun	177.4	177.2
Jul	174.1	179.6
Aug	175.9	179.7
Sep	169.3	178.9
Oct	171.4	177.2
Nov	174.8	177.9
Dec	185.7	178.5
2013 Jan	183.3	179.1
Feb	180.9	175.9
Mar	180.8	177.2
Apr	184.8	179.6
May	180.1	180.4
Jun	183.3	182.6
Jul	174.6	185.9
Aug	175.8	186.8
Sep	178.1	185.6
Oct	176.9	187.2
Nov	179.1	187.9
Dec	185.7	188.9
2014 Jan	188.0	191.7
Feb	192.1	192.4
Mar	184.7	192.0
Apr	189.4	198.2
May	192.6	199.5
Jun	190.4	202.1
Jul	197.5	207.0
Aug	197.5	208.7
Sep	196.4	208.2
Oct	190.9	207.1
Nov	197.4	206.5
Dec	203.1	207.4
2015 Jan <sup>R</sup>	199.3	208.2
Feb <sup>R</sup>	197.6	207.3
Mar	209.8	209.8

Notes  
R = data revised

**6 Mix-adjusted average house prices by whether dwelling is new or second hand, UK (DCLG table A6)**

New or second-hand, all dwellings

£, not seasonally adjusted		
	New dwellings	Pre-owned dwellings
	UK	UK
2008 Jan <sup>1</sup>	231,000	221,000
Feb	229,000	216,000
Mar	228,000	217,000
Apr	230,000	218,000
May	224,000	216,000
Jun	222,000	215,000
Jul	218,000	215,000
Aug	208,000	209,000
Sep	211,000	208,000
Oct	195,000	204,000
Nov	192,000	200,000
Dec	205,000	195,000
2009 Jan <sup>1</sup>	201,000	195,000
Feb	197,000	189,000
Mar	188,000	187,000
Apr	187,000	188,000
May	184,000	189,000
Jun	185,000	192,000
Jul	181,000	197,000
Aug	178,000	198,000
Sep	186,000	200,000
Oct	184,000	199,000
Nov	182,000	201,000
Dec	191,000	201,000
2010 Jan <sup>1</sup>	192,000	209,000
Feb	182,000	206,000
Mar	185,000	207,000
Apr	196,000	208,000
May	191,000	210,000
June	196,000	212,000
July	194,000	214,000
Aug	188,000	215,000
Sep	191,000	213,000
Oct	185,000	210,000
Nov	193,000	209,000
Dec	197,000	207,000
2011 Jan <sup>1</sup>	200,000	217,000
Feb	199,000	213,000
Mar	199,000	216,000
Apr	200,000	215,000
May	199,000	213,000
June	199,000	216,000
July	205,000	218,000
Aug	203,000	219,000
Sep	205,000	218,000
Oct	205,000	217,000
Nov	204,000	216,000
Dec	212,000	215,000
2012 Jan <sup>1</sup>	223,000	230,000
Feb	221,000	226,000
Mar	218,000	226,000
Apr	215,000	229,000
May	216,000	229,000
Jun	216,000	232,000
Jul	212,000	235,000
Aug	214,000	235,000
Sep	206,000	234,000
Oct	209,000	232,000
Nov	213,000	233,000
Dec	226,000	234,000
2013 Jan <sup>1</sup>	233,000	238,000
Feb	230,000	234,000
Mar	230,000	235,000
Apr	235,000	238,000
May	229,000	239,000
Jun	233,000	242,000
Jul	222,000	247,000
Aug	223,000	248,000
Sep	226,000	246,000
Oct	225,000	248,000
Nov	227,000	250,000
Dec	236,000	251,000
2014 Jan <sup>1</sup>	240,000	253,000
Feb	245,000	254,000
Mar	236,000	253,000
Apr	242,000	261,000
May	246,000	263,000
Jun	243,000	266,000
Jul	252,000	273,000
Aug	252,000	275,000
Sep	251,000	275,000
Oct	244,000	273,000
Nov	252,000	272,000
Dec	260,000	273,000
2015 Jan <sup>1</sup> <sup>R</sup>	260,000	271,000
Feb <sup>R</sup>	258,000	270,000
Mar	274,000	273,000

Notes  
1 See footnote 1 in Table 2  
R = data revised

**5 Mix-adjusted House Price Index and annual house price change by whether dwelling is new or second-hand, UK (DCLG table A5)**  
**New or second-hand, all dwellings**

not seasonally adjusted

	New dwellings UK	Pre-owned dwellings UK
<b>Percentage change on a year earlier</b>		
2009 Jan	-7.7	-11.7
Feb	-9.1	-12.5
Mar	-12.5	-13.6
Apr	-13.8	-13.5
May	-13.0	-12.7
Jun	-12.0	-10.6
Jul	-12.2	-8.2
Aug	-9.4	-5.4
Sep	-6.6	-3.9
Oct	-0.6	-2.3
Nov	0.5	0.6
Dec	-1.5	3.2
2010 Jan	-2.1	6.8
Feb	-4.8	8.2
Mar	1.3	10.3
Apr	7.9	9.9
May	6.8	10.9
June	9.0	10.0
July	10.1	8.0
Aug	8.8	8.1
Sep	5.6	6.2
Oct	4.0	4.9
Nov	8.7	3.4
Dec	6.3	2.8
2011 Jan	5.9	-0.4
Feb	11.3	-1.0
Mar	9.1	-0.4
Apr	3.7	-1.1
May	5.9	-3.1
June	3.7	-2.7
July	7.5	-2.3
Aug	9.4	-2.3
Sep	9.1	-2.3
Oct	12.3	-1.3
Nov	7.9	-1.1
Dec	9.4	-1.0
2012 Jan	9.0	0.0
Feb	8.0	0.5
Mar	6.9	-0.9
Apr	5.0	1.1
May	6.2	2.0
Jun	5.6	2.0
Jul	0.9	2.0
Aug	3.1	1.7
Sep	-2.0	1.8
Oct	-0.6	1.5
Nov	1.6	2.1
Dec	4.0	3.2
2013 Jan	0.1	2.2
Feb	-0.3	2.0
Mar	1.0	2.8
Apr	4.5	2.5
May	1.4	3.0
Jun	3.4	3.1
Jul	0.3	3.5
Aug	-0.1	4.0
Sep	5.2	3.8
Oct	3.2	5.6
Nov	2.5	5.6
Dec	0.0	5.8
2014 Jan	2.6	7.0
Feb	6.2	9.3
Mar	2.1	8.4
Apr	2.5	10.4
May	7.0	10.6
Jun	3.9	10.7
Jul	13.1	11.4
Aug	12.4	11.7
Sep	10.3	12.2
Oct	7.9	10.6
Nov	10.2	9.9
Dec	9.4	9.8
2015 Jan <sup>R</sup>	6.0	8.6
Feb <sup>R</sup>	2.8	7.7
Mar	13.6	9.2

Notes R = data revised



## 7 Seasonally adjusted mix-adjusted House Price Index and monthly house price change, UK (DCLG table A7)

All dwellings

Index level (Feb 2002 = 100.0 before seasonal adjustment)						Percentage change on the previous month							
	New dwellings <sup>1</sup>	Pre-owned dwellings <sup>2</sup>	All dwellings <sup>3</sup>	First time buyer <sup>4</sup>	Former owner occupier <sup>5</sup>		New dwellings	Pre-owned dwellings	All dwellings	First time buyer	Former owner occupier		
2008	Jan	174.2	186.1	184.9	188.7	184.4	2008	Jan	0.6	0.6	0.6	0.6	0.6
	Feb	174.3	185.5	184.4	188.2	183.9		Feb	0.1	-0.3	-0.3	-0.2	-0.2
	Mar	172.3	185.4	184.2	187.3	183.7		Mar	-1.1	-0.1	-0.1	-0.5	-0.2
	Apr	174.2	185.0	184.0	187.0	183.6		Apr	1.1	-0.2	-0.1	-0.2	0.0
	May	169.5	183.6	182.4	185.7	182.0		May	-2.7	-0.8	-0.9	-0.7	-0.9
	Jun	166.8	181.3	180.0	182.5	179.9		Jun	-1.6	-1.3	-1.3	-1.7	-1.1
	Jul	165.5	179.0	177.9	179.5	178.0		Jul	-0.8	-1.2	-1.2	-1.6	-1.1
	Aug	160.0	174.3	173.2	175.5	173.2		Aug	-3.3	-2.6	-2.7	-2.2	-2.7
	Sep	159.9	174.1	173.0	171.9	174.2		Sep	-0.1	-0.1	-0.1	-2.0	0.6
	Oct	149.9	172.1	170.6	169.5	172.0		Oct	-6.3	-1.2	-1.4	-1.4	-1.3
	Nov	150.9	169.6	168.1	165.6	169.8		Nov	0.7	-1.4	-1.5	-2.3	-1.3
	Dec	153.5	166.3	165.3	163.3	166.5		Dec	1.7	-1.9	-1.7	-1.4	-1.9
2009	Jan	155.3	164.3	163.5	160.0	165.6	2009	Jan	1.2	-1.2	-1.1	-2.0	-0.5
	Feb	153.8	162.6	162.0	160.6	163.4		Feb	-1.0	-1.0	-0.9	0.4	-1.4
	Mar	150.9	160.6	159.6	156.4	161.2		Mar	-1.9	-1.2	-1.5	-2.6	-1.3
	Apr	148.6	160.2	159.3	157.6	160.3		Apr	-1.5	-0.2	-0.2	0.8	-0.6
	May	148.1	160.6	159.3	158.6	160.5		May	-0.3	0.3	0.0	0.6	0.1
	Jun	147.8	162.0	160.7	161.0	161.3		Jun	-0.2	0.9	0.9	1.6	0.5
	Jul	146.3	164.1	162.6	163.1	163.0		Jul	-1.0	1.3	1.2	1.3	1.1
	Aug	148.0	164.7	163.1	164.6	163.4		Aug	1.1	0.3	0.3	0.9	0.3
	Sep	152.2	167.1	165.7	169.6	165.2		Sep	2.9	1.5	1.6	3.1	1.1
	Oct	152.7	168.2	166.8	169.6	166.6		Oct	0.4	0.6	0.7	0.0	0.9
	Nov	151.5	170.5	168.8	172.2	168.3		Nov	-0.8	1.4	1.2	1.5	1.0
	Dec	151.3	171.6	170.0	174.3	168.9		Dec	-0.1	0.7	0.7	1.2	0.3
2010	Jan	152.1	175.4	173.6	174.0	174.4	2010	Jan	0.5	2.2	2.1	-0.2	3.3
	Feb	146.5	175.8	173.7	175.2	174.1		Feb	-3.7	0.2	0.1	0.7	-0.2
	Mar	152.7	177.0	175.0	176.0	175.0		Mar	4.2	0.7	0.8	0.4	0.5
	Apr	160.4	175.9	174.7	177.1	174.3		Apr	5.1	-0.6	-0.2	0.6	-0.4
	May	158.1	178.1	176.3	177.7	176.7		May	-1.5	1.3	0.9	0.3	1.4
	June	161.1	178.1	176.6	177.8	176.9		June	1.9	0.0	0.2	0.1	0.1
	July	161.0	177.5	176.0	176.1	176.5		July	-0.1	-0.3	-0.3	-1.0	-0.2
	Aug	160.4	178.1	176.4	178.5	176.5		Aug	-0.4	0.4	0.3	1.3	0.0
	Sep	160.6	177.7	176.2	177.6	176.6		Sep	0.1	-0.2	-0.1	-0.5	0.1
	Oct	158.5	176.6	175.0	176.1	175.5		Oct	-1.3	-0.6	-0.7	-0.8	-0.6
	Nov	163.9	176.3	175.1	175.9	175.6		Nov	3.4	-0.2	0.1	-0.1	0.0
	Dec	161.1	176.3	175.1	175.3	175.5		Dec	-1.7	0.0	0.0	-0.3	-0.1
2011	Jan	161.9	174.9	173.9	176.0	173.8	2011	Jan	0.5	-0.7	-0.7	0.4	-0.9
	Feb	164.1	174.1	173.5	175.6	173.7		Feb	1.3	-0.5	-0.2	-0.3	-0.1
	Mar	166.7	176.5	175.6	175.1	176.1		Mar	1.6	1.4	1.2	-0.3	1.4
	Apr	166.6	174.0	173.3	174.4	173.5		Apr	-0.1	-1.4	-1.3	-0.4	-1.5
	May	167.1	172.7	171.9	173.9	172.1		May	0.3	-0.7	-0.8	-0.3	-0.8
	June	166.9	173.2	172.5	174.2	172.7		June	-0.1	0.3	0.4	0.2	0.4
	July	172.9	173.2	173.0	175.5	172.6		July	3.6	0.0	0.3	0.8	-0.1
	Aug	174.7	173.9	173.5	174.9	173.8		Aug	1.1	0.4	0.3	-0.4	0.7
	Sep	175.1	173.7	173.5	176.6	173.3		Sep	0.2	-0.1	0.0	1.0	-0.3
	Oct	177.3	174.4	174.3	177.2	174.0		Oct	1.2	0.4	0.4	0.4	0.4
	Nov	175.9	174.3	174.1	177.1	173.8		Nov	-0.8	0.0	-0.1	-0.1	-0.1
	Dec	176.3	174.3	174.2	177.7	173.5		Dec	0.2	0.0	0.1	0.3	-0.2
2012	Jan	177.4	175.1	175.0	179.3	174.2	2012	Jan	0.6	0.4	0.5	0.9	0.4
	Feb	177.9	175.0	175.3	179.5	174.6		Feb	0.3	-0.1	0.1	0.1	0.2
	Mar	178.3	175.0	175.0	179.9	173.3		Mar	0.2	0.0	-0.2	0.2	-0.7
	Apr	175.0	175.8	175.7	176.8	175.8		Apr	-1.8	0.5	0.4	-1.7	1.4
	May	177.3	176.1	175.9	178.9	175.7		May	1.3	0.2	0.1	1.2	0.0
	Jun	176.4	176.7	176.4	179.3	176.2		Jun	-0.5	0.3	0.3	0.2	0.3
	Jul	174.3	176.6	176.3	179.0	176.1		Jul	-1.2	0.0	-0.1	-0.2	0.0
	Aug	179.5	176.7	176.7	180.1	176.1		Aug	3.0	0.1	0.2	0.6	0.0
	Sep	171.9	177.1	176.8	179.4	176.5		Sep	-4.3	0.2	0.1	-0.4	0.2
	Oct	176.1	177.0	176.8	180.5	176.3		Oct	2.5	0.0	0.0	0.6	-0.1
	Nov	178.4	178.1	178.0	181.9	177.2		Nov	1.3	0.6	0.7	0.8	0.5
	Dec	183.3	179.9	179.9	182.3	179.6		Dec	2.7	1.0	1.1	0.2	1.4
2013	Jan	178.1	179.1	178.8	182.8	178.1	2013	Jan	-2.9	-0.4	-0.6	0.3	-0.8
	Feb	177.7	178.4	178.6	182.4	178.0		Feb	-0.2	-0.4	-0.1	-0.3	0.0
	Mar	180.3	179.9	179.8	182.3	178.9		Mar	1.4	0.9	0.6	-0.1	0.5
	Apr	182.9	180.2	180.2	185.1	178.9		Apr	1.5	0.2	0.2	1.5	0.0
	May	179.8	181.4	180.9	186.1	179.8		May	-1.7	0.6	0.4	0.6	0.5
	Jun	182.2	182.1	181.8	186.4	181.1		Jun	1.4	0.4	0.5	0.2	0.7
	Jul	174.7	182.8	182.1	186.4	181.3		Jul	-4.2	0.4	0.2	0.0	0.1
	Aug	178.9	183.7	183.1	188.4	182.0		Aug	2.3	0.5	0.5	1.1	0.3
	Sep	180.6	183.8	183.7	189.1	182.4		Sep	1.2	0.1	0.3	0.3	0.2
	Oct	182.0	187.1	186.6	191.2	185.7		Oct	1.0	1.8	1.7	1.2	1.9
	Nov	182.2	188.3	187.7	193.5	186.3		Nov	-0.1	0.7	0.6	1.2	0.3
	Dec	183.2	190.2	189.6	195.8	187.9		Dec	0.5	0.9	0.9	1.3	0.7
2014	Jan	184.0	191.9	191.1	196.7	189.8	2014	Jan	0.9	1.0	1.0	0.4	1.0
	Feb	190.2	195.0	194.8	201.2	192.9		Feb	3.5	1.6	1.8	2.4	1.5
	Mar	184.6 R	194.5 R	193.6 R	200.3 R	191.2 R		Mar	-2.9 R	-0.5 R	-0.8 R	-0.6 R	-1.2 R
	Apr	186.9 R	198.6 R	197.7 R	204.9	195.5 R		Apr	1.3 R	2.1	2.1	2.3 R	2.2 R
	May	191.8 R	200.2 R	199.4 R	207.1	197.4 R		May	2.6 R	0.8	0.9	1.1	1.0
	Jun	189.6 R	201.5 R	200.5	208.9	198.1 R		Jun	-1.1 R	0.7	0.6 R	0.9	0.4
	Jul	198.0	203.8 R	203.2 R	211.3	201.0		Jul	4.4 R	1.2	1.4	1.1	1.5
	Aug	199.3 R	205.5	204.8	212.8 R	202.6		Aug	0.6 R	0.8	0.8	0.7	0.8
	Sep	198.8 R	206.3	205.8	214.2 R	203.6		Sep	-0.2 R	0.4	0.5	0.7	0.5
	Oct	196.0 R	206.9	206.1	214.0 R	203.8		Oct	-1.4 R	0.3	0.1	-0.1	0.1
	Nov	200.3 R	207.2 R	206.5 R	214.5	204.2 R		Nov	2.2	0.1	0.2 R	0.2	0.2 R
	Dec	199.8 R	208.6 R	208.0 R	214.3	206.4		Dec	-0.3	0.7	0.7	-0.1	1.0 R
2015	Jan	196.1 R	208.7 R	207.7 R	214.5 R	206.0 R	2015	Jan	-1.8	0.0	-0.1	0.1 R	-0.2 R
	Feb	195.8 R	210.4 R	209.5 R	215.2 R	208.2 R		Feb	-0.2	0.8 R	0.9 R	0.3 R	1.1 R
	Mar	210.0	212.3	211.8	216.0	210.8		Mar	7.3	0.9	1.1	0.4	1.2

Notes

<sup>1</sup> Seasonally adjusted series for the latest 12 months are subject to revision.

R = data revised